

DISTRICT I  
1625 N. French Dr., Hobbs, NM 88240  
Phone: (575) 393-6161 Fax: (575) 393-0720  
DISTRICT II  
817 S. First St., Artesia, NM 88210  
Phone: (505) 746-1283 Fax: (575) 748-9720  
DISTRICT III  
1000 Rio Brazos Road, Aztec, NM 87410  
Phone: (505) 334-6178 Fax: (505) 334-6170  
DISTRICT IV  
1220 S. St. Francis Dr., Santa Fe, NM 87505  
Phone: (505) 476-3460 Fax: (505) 476-3462

State of New Mexico  
Energy, Minerals & Natural Resources Department  
OIL CONSERVATION DIVISION  
1220 South St. Francis Dr.  
Santa Fe, New Mexico 87505

Form C-102  
Revised August 1, 2011  
Submit one copy to appropriate District Office

**RECEIVED**  
SEP 16 2012  
AMENDED REPORT  
NMOCD ARTESIA *As drilled*

WELL LOCATION AND ACREAGE DEDICATION PLAT

API Number <b>30-015-40991</b>	Pool Code <b>96831-26770</b>	Pool Name <b>Fren Cedar Lake, Glorieta-Yeso</b>
Property Code <b>308911</b>	Property Name <b>CROW FEDERAL</b>	Well Number <b>17H</b>
OGRID No. <b>803</b>	Operator Name <b>APACHE CORPORATION</b>	Elevation <b>3837'</b>

Surface Location

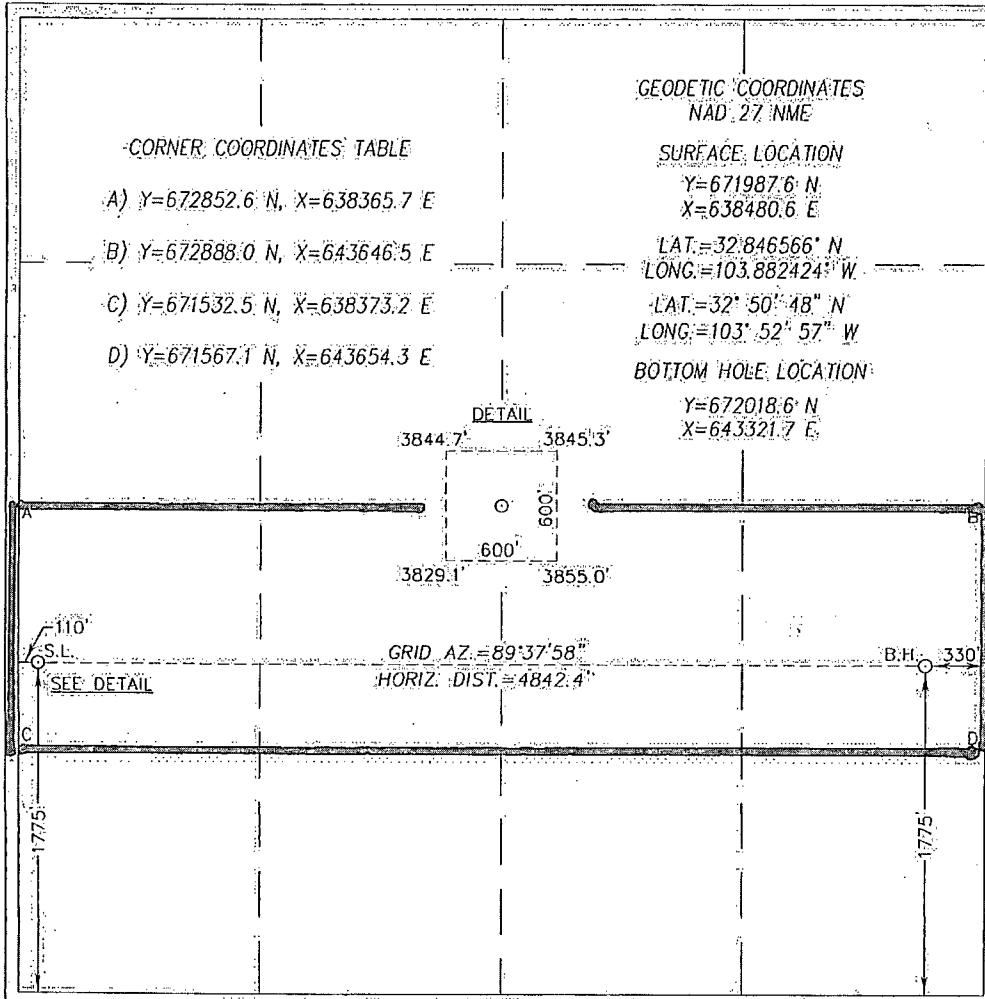
UL or lot No.	Section	Township	Range	Lot Idn.	Feet from the	North/South line	Feet from the	East/West line	County
L	9	17-S	31-E		1775	SOUTH	110	WEST	EDDY

Bottom Hole Location If Different From Surface

UL or lot No.	Section	Township	Range	Lot Idn.	Feet from the	North/South line	Feet from the	East/West line	County
I	9	17-S	31-E		1775	SOUTH	330	EAST	EDDY

Dedicated Acres: <b>160</b>	Joint or Infill.	Consolidation Code.	Order No.
--------------------------------	------------------	---------------------	-----------

NO ALLOWABLE WILL BE ASSIGNED TO THIS COMPLETION UNTIL ALL INTERESTS HAVE BEEN CONSOLIDATED OR A NON-STANDARD UNIT HAS BEEN APPROVED BY THE DIVISION



**OPERATOR CERTIFICATION**  
I hereby certify that the information herein is true and complete to the best of my knowledge and belief, and that this organization either owns a working interest or unleased mineral interest in the land including the proposed bottom hole location or has a right to drill this well at this location pursuant to a contract with an owner of such mineral or working interest, or to a voluntary pooling agreement or a compulsory pooling order, heretofore entered by the division.

*Sorina L Flores* 8/15/12  
Signature Date  
Sorina L Flores  
Printed Name  
sorina.flores@apachecorp.com  
E-mail Address

**SURVEYOR CERTIFICATION**  
I hereby certify that the well location shown on this plat was plotted from field notes of actual surveys made by me or under my supervision, and that the same is true and correct to the best of my belief.

MAY 18, 2012  
Date of Survey  
Signature & Seal of Professional Surveyor:  
RONALD J. EIDSON  
NEW MEXICO  
REG. 3239  
Certificate Number Gary Eidson, 12641  
Ronald J. Eidson 3239  
AP PROFESSIONAL REG. W.O. 12/11/0478