

RECEIVED

DISTRICT I
1825 N. French Dr., Hobbs, NM 88240

DISTRICT II
1501 W. Grand Avenue, Artesia, NM 88210

DISTRICT III
1000 Rio Brazos Rd., Aztec, NM 87410

DISTRICT IV
1220 S. St. Francis Dr., Santa Fe, NM 87505

SEP 18 2013

State of New Mexico
Energy, Minerals and Natural Resources Department

Form C-102
Revised July 18, 2010

Submit one copy to appropriate
District Office

MOCD ARTESIA

OIL CONSERVATION DIVISION
1220 South St. Francis Dr.
Santa Fe, New Mexico 87505

WELL LOCATION AND ACREAGE DEDICATION PLAT

☐ AMENDED REPORT

API Number 30-015-40784	Pool Code 97020	Pool Name Hackberry, Bone Spring NW
Property Code 39015	Property Name CRESCENT HALE "10" FEDERAL	Well Number 3H
OGRID No. 162683	Operator Name CIMAREX ENERGY CO. OF COLORADO	Elevation 3354'

Surface Location

UL or lot No.	Section	Township	Range	Lot Idn	Feet from the	North/South line	Feet from the	East/West line	County
K	11	19 S	30 E		2250	SOUTH	2025	WEST	EDDY

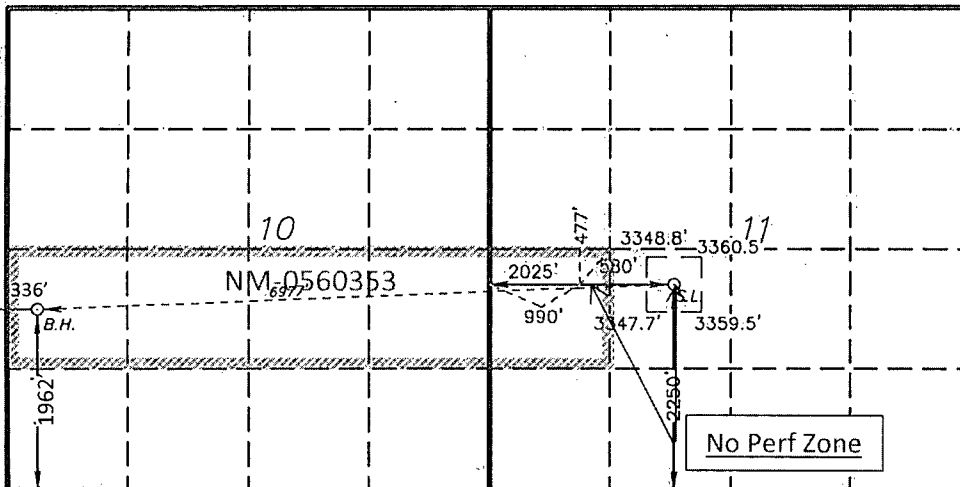
Bottom Hole Location If Different From Surface

UL or lot No.	Section	Township	Range	Lot Idn	Feet from the	North/South line	Feet from the	East/West line	County
L	10	19 S	30 E		1962	SOUTH	336	WEST	EDDY
Dedicated Acres 200	Joint or Infill	Consolidation Code	Order No.						

NO ALLOWABLE WILL BE ASSIGNED TO THIS COMPLETION UNTIL ALL INTERESTS HAVE BEEN CONSOLIDATED
OR A NON-STANDARD UNIT HAS BEEN APPROVED BY THE DIVISION

SURFACE LOCATION

Lat - N 32°40'25.66"
Long - W 103°56'40.77"
NMSPC- N 609076.065
E 660933.135
(NA0-83)



OPERATOR CERTIFICATION

I hereby certify that the information contained herein is true and complete to the best of my knowledge and belief, and that this organization either owns a working interest or unleased mineral interest in the land including the proposed bottom hole location or has a right to drill this well at this location pursuant to a contract with an owner of such a mineral or working interest, or to a voluntary pooling agreement or a compulsory pooling order heretofore entered by the division.

Aricka Easterling 9/11/13
Signature Date

Aricka Easterling
Printed Name
aeasterling@cimarex.com
Email Address

SURVEYOR CERTIFICATION

I hereby certify that the well location shown on this plat was plotted from field notes of actual surveys made by me or under my supervision and that the same is true and correct to the best of my belief.

APPROVED
DATE SURVEYED
SIGNATURE & SEAL OF
PROFESSIONAL SURVEYOR
7977
W.C. JONES

Certificate No. Gary L. Jones 7977

BASIN SURVEYS 24482