

RECEIVED

SEP 16 2013

Form C-102

District I
1625 N. French Dr., Hobbs, NM 88240
Phone: (575) 393-6161 Fax: (575) 393-0720

District II
811 S. First St., Artesia, NM 88210
Phone: (575) 748-1283 Fax: (575) 748-9720

District III
1000 Rio Brazos Road, Aztec, NM 87410
Phone: (505) 334-6178 Fax: (505) 334-6170

District IV
1220 S. St. Francis Dr., Santa Fe, NM 87505
Phone: (505) 476-3460 Fax: (505) 476-3462

State of New Mexico
Energy, Minerals & Natural Resources Department
OIL CONSERVATION DIVISION
1220 South St. Francis Dr.
Santa Fe, NM 87505

NMOC DARTESIA

Received August 1, 2011
Submit one copy to appropriate
District Office

☐ AMENDED REPORT**WELL LOCATION AND ACREAGE DEDICATION PLAT**

¹ API Number 30-015-41649	² Pool Code 96101	³ Pool Name SWD; Devonian
⁴ Property Code 40125	⁵ Property Name COTTON DRAW UNIT SWD	
⁷ OGRID No. 6137	⁸ Operator Name DEVON ENERGY PRODUCTION COMPANY, L.P.	
		⁶ Well Number 181
		⁹ Elevation 3511.3

¹⁰ Surface Location

UL or lot no.	Section	Township	Range	Lot Idn	Feet from the	North/South line	Feet from the	East/West line	County
H	36	24 S	31 E		1568	NORTH	1189	EAST	EDDY

¹¹ Bottom Hole Location If Different From Surface

UL or lot no.	Section	Township	Range	Lot Idn	Feet from the	North/South line	Feet from the	East/West line	County
¹² Dedicated Acres 40	¹³ Joint or Infill	¹⁴ Consolidation Code	¹⁵ Order No.						

No allowable will be assigned to this completion until all interests have been consolidated or a non-standard unit has been approved by the division.

N89°39'31"E 2641.29 FT		N89°39'22"E 2641.18 FT	
NW CORNER SEC. 36 LAT. = 32.1810843°N LONG. = 103.7400380°W NMSP EAST (FT) N = 430119.30 E = 724891.03	N O CORNER SEC. 36 LAT. = 32.1810872°N LONG. = 103.7315028°W NMSP EAST (FT) N = 430135.04 E = 727531.69	NE CORNER SEC. 36 LAT. = 32.1810898°N LONG. = 103.7229679°W NMSP EAST (FT) N = 430150.88 E = 730172.25	
W O CORNER SEC. 36 LAT. = 32.1738255°N LONG. = 103.7400604°W NMSP EAST (FT) N = 427478.61 E = 724898.64		E O CORNER SEC. 36 LAT. = 32.1738293°N LONG. = 103.7229618°W NMSP EAST (FT) N = 427509.60 E = 730189.13	
<p>COTTON DRAW UNIT #181 SWD ELEV. = 3511.3' LAT. = 32.1767786°N (NAD83) LONG. = 103.7268063°W NMSP EAST (FT) N = 428575.78 E = 728993.53</p> <p>NOTE: LATITUDE AND LONGITUDE COORDINATES ARE SHOWN USING THE NORTH AMERICAN DATUM OF 1983 (NAD83). LISTED NEW MEXICO STATE PLANE EAST COORDINATES ARE GRID (NAD83). BASIS OF BEARING AND DISTANCES USED ARE NEW MEXICO STATE PLANE EAST COORDINATES MODIFIED TO THE SURFACE.</p>			
LOT 1		LOT 4	
SW CORNER SEC. 36 LAT. = 32.1666604°N LONG. = 103.7400852°W NMSP EAST (FT) N = 424872.03 E = 724905.34	S O CORNER SEC. 36 LAT. = 32.1666199°N LONG. = 103.7315230°W NMSP EAST (FT) N = 424872.00 E = 727554.88	SE CORNER SEC. 36 LAT. = 32.1665815°N LONG. = 103.7229565°W NMSP EAST (FT) N = 424872.96 E = 730205.72	
N89°59'58"W 2650.11 FT		S89°58'45"W 2651.42 FT	

¹⁷ OPERATOR CERTIFICATION

I hereby certify that the information contained herein is true and complete to the best of my knowledge and belief, and that this organization either owns a working interest or unleased mineral interest in the land including the proposed bottom hole location or has a right to drill this well at this location pursuant to a contract with an owner of such a mineral or working interest, or to a voluntary pooling agreement or a compulsory pooling order heretofore entered by the division.

Patti Riechers 09/11/2013
Signature Date
Patti Riechers, Regulatory Specialist
Printed Name
patti.riechers@dvn.com
E-mail Address

¹⁸ SURVEYOR CERTIFICATION

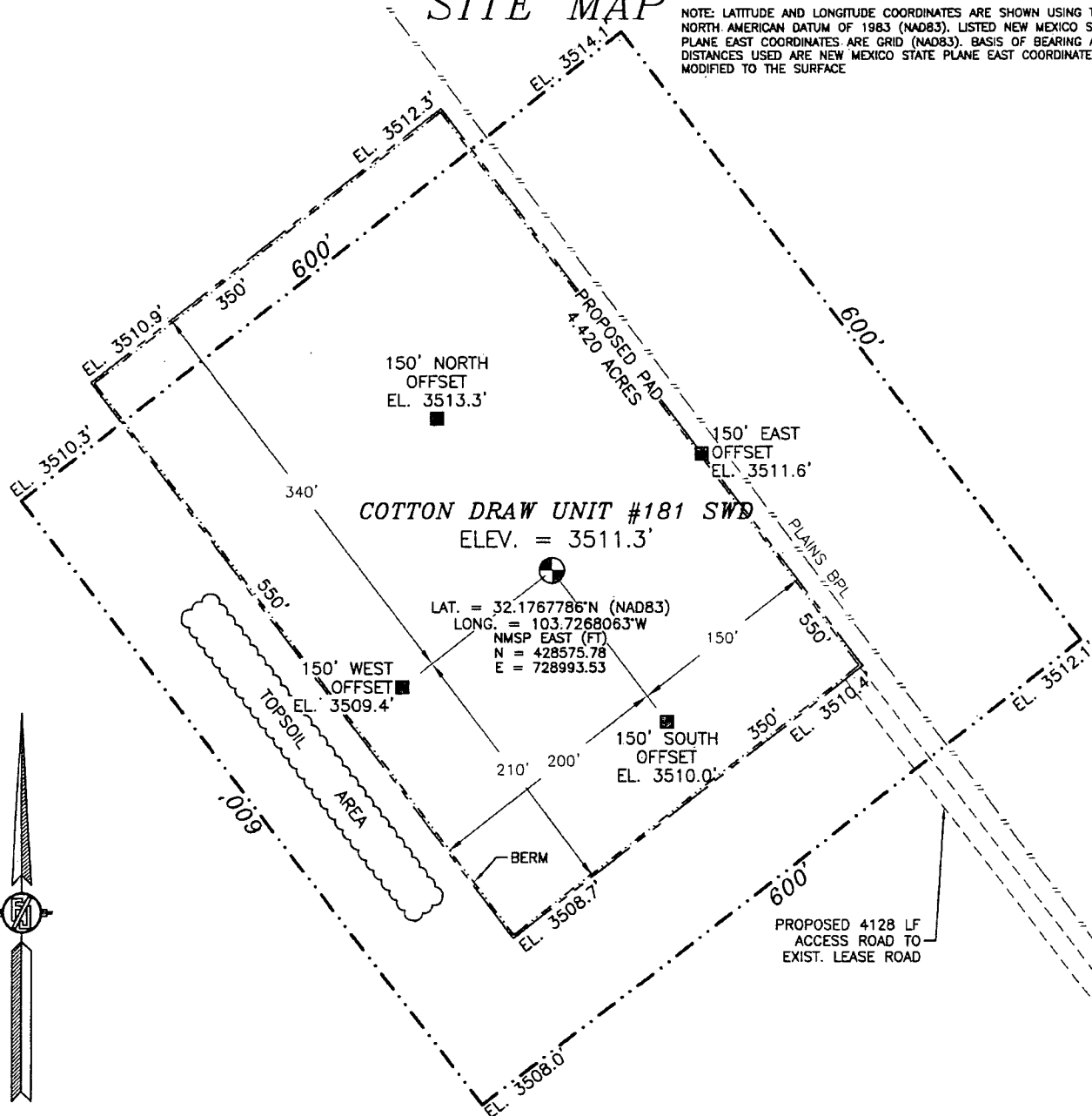
I hereby certify that the well location shown on this plat was plotted from field notes of actual surveys made by me or under my supervision, and that the same is true and correct to the best of my belief.

AUGUST 29, 2013
Date of Survey
[Signature]
Signature and Seal of Professional Surveyor
Certificate Number FILMINO V. CABRILLO, P.L.S. 12797
"SURVEY NO. 2181A"

SECTION 36, TOWNSHIP 24 SOUTH, RANGE 31 EAST, N.M.P.M.
EDDY COUNTY, STATE OF NEW MEXICO

SITE MAP

NOTE: LATITUDE AND LONGITUDE COORDINATES ARE SHOWN USING THE NORTH AMERICAN DATUM OF 1983 (NAD83). LISTED NEW MEXICO STATE PLANE EAST COORDINATES ARE GRID (NAD83). BASIS OF BEARING AND DISTANCES USED ARE NEW MEXICO STATE PLANE EAST COORDINATES MODIFIED TO THE SURFACE



0 12 60 120 240

SCALE 1" = 120'

DIRECTIONS TO LOCATION

FROM THE INTERSECTION OF STATE HIGHWAY 1 (ORLA HIGHWAY) AND MONSANTO ROAD GO WEST ON MONSANTO ROAD APPROX. 2.1 MILES, ROAD TURNS RIGHT (NORTH) GO NORTH APPROX. 0.9 MILES, ROAD TURNS LEFT (WEST) GO WEST APPROX. 2.0 MILES, ROAD TURNS RIGHT (NORTH) GO NORTH APPROX. 1.8 MILES, ROAD TURNS LEFT (WEST) GO WEST APPROX. 0.3 MILES, ROAD TURNS RIGHT (NORTH) GO NORTH CROSS CATTLE GUARD APPROX. 0.4 MILES, TURN RIGHT (EAST) GO EAST APPROX. 1.2 MILES TO EXISTING DEVON COTTON DRAW UNIT #116H. CENTERLINE OF PROPOSED ROAD STARTS ON THE SOUTH EDGE OF PAD, GO EAST APPROX. 400' AND TURN LEFT (NORTH) ON EAST EDGE OF PAD, CENTERLINE PROPOSED ROAD GOES (NORTH) APPROX. 0.5 MILES, ROAD TURNS LEFT (NORTHWEST) PARALLELING PIPELINE APPROX. 0.2 MILES TO LOCATION.

DEVON ENERGY PRODUCTION COMPANY, L.P.
COTTON DRAW UNIT #181 SWD
LOCATED 1568 FT. FROM THE NORTH LINE
AND 1189 FT. FROM THE EAST LINE OF
SECTION 36, TOWNSHIP 24 SOUTH,
RANGE 31 EAST, N.M.P.M.
EDDY COUNTY, STATE OF NEW MEXICO

AUGUST 29, 2013

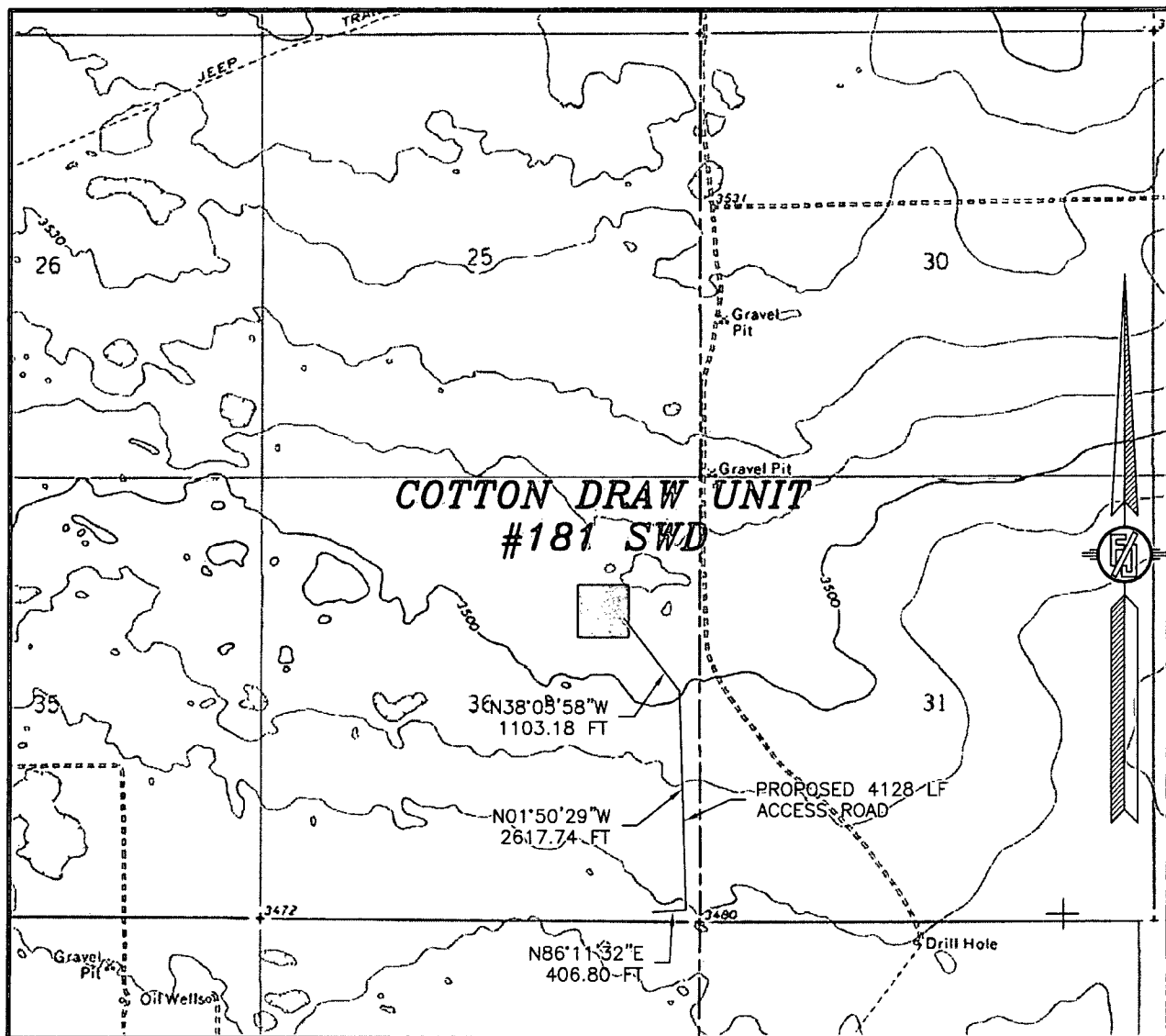
SURVEY NO. 2181A

MADRON SURVEYING, INC.

301 SOUTH CANAL
(575) 234-3341

CARLSBAD, NEW MEXICO

SECTION 36, TOWNSHIP 24 SOUTH, RANGE 31 EAST, N.M.P.M.
EDDY COUNTY, STATE OF NEW MEXICO
LOCATION VERIFICATION MAP



USGS QUAD MAP:
PADUCA BREAKS NW

NOT TO SCALE

DEVON ENERGY PRODUCTION COMPANY, L.P.

COTTON DRAW UNIT #181 SWD

LOCATED 1568 FT. FROM THE NORTH LINE

AND 1189 FT. FROM THE EAST LINE OF

SECTION 36, TOWNSHIP 24 SOUTH,

RANGE 31 EAST, N.M.P.M.

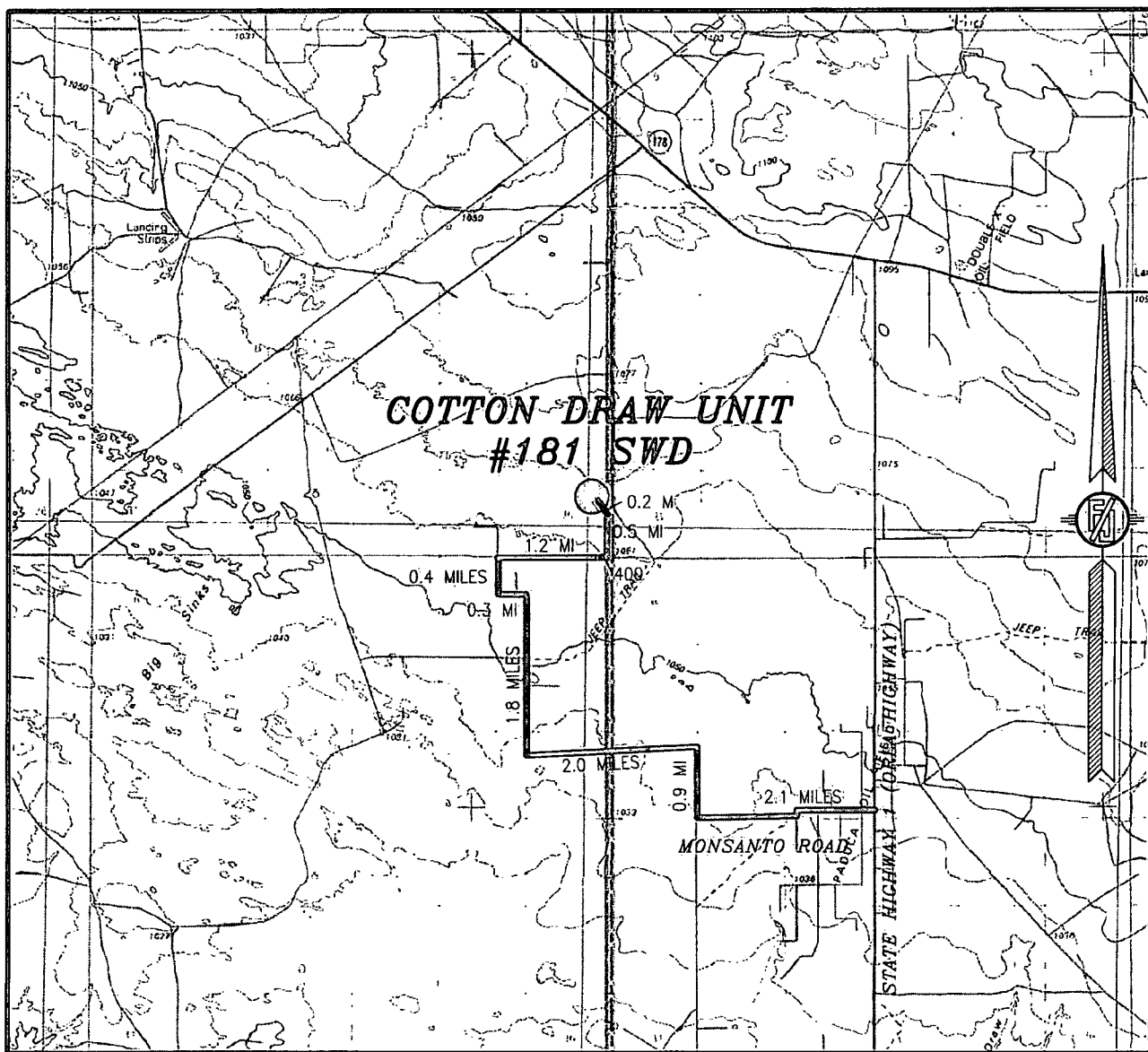
EDDY COUNTY, STATE OF NEW MEXICO

AUGUST 29, 2013

SURVEY NO. 2181A

MADRON SURVEYING, INC. 301 SOUTH CANAL CARLSBAD, NEW MEXICO
(575) 234-3341

SECTION 36, TOWNSHIP 24 SOUTH, RANGE 31 EAST, N.M.P.M.
EDDY COUNTY, STATE OF NEW MEXICO
VICINITY MAP



NOT TO SCALE

DEVON ENERGY PRODUCTION COMPANY, L.P.

COTTON DRAW UNIT #181 SWD

LOCATED 1568 FT. FROM THE NORTH LINE
AND 1189 FT. FROM THE EAST LINE OF
SECTION 36, TOWNSHIP 24 SOUTH,
RANGE 31 EAST, N.M.P.M.
EDDY COUNTY, STATE OF NEW MEXICO

AUGUST 29, 2013

DIRECTIONS TO LOCATION

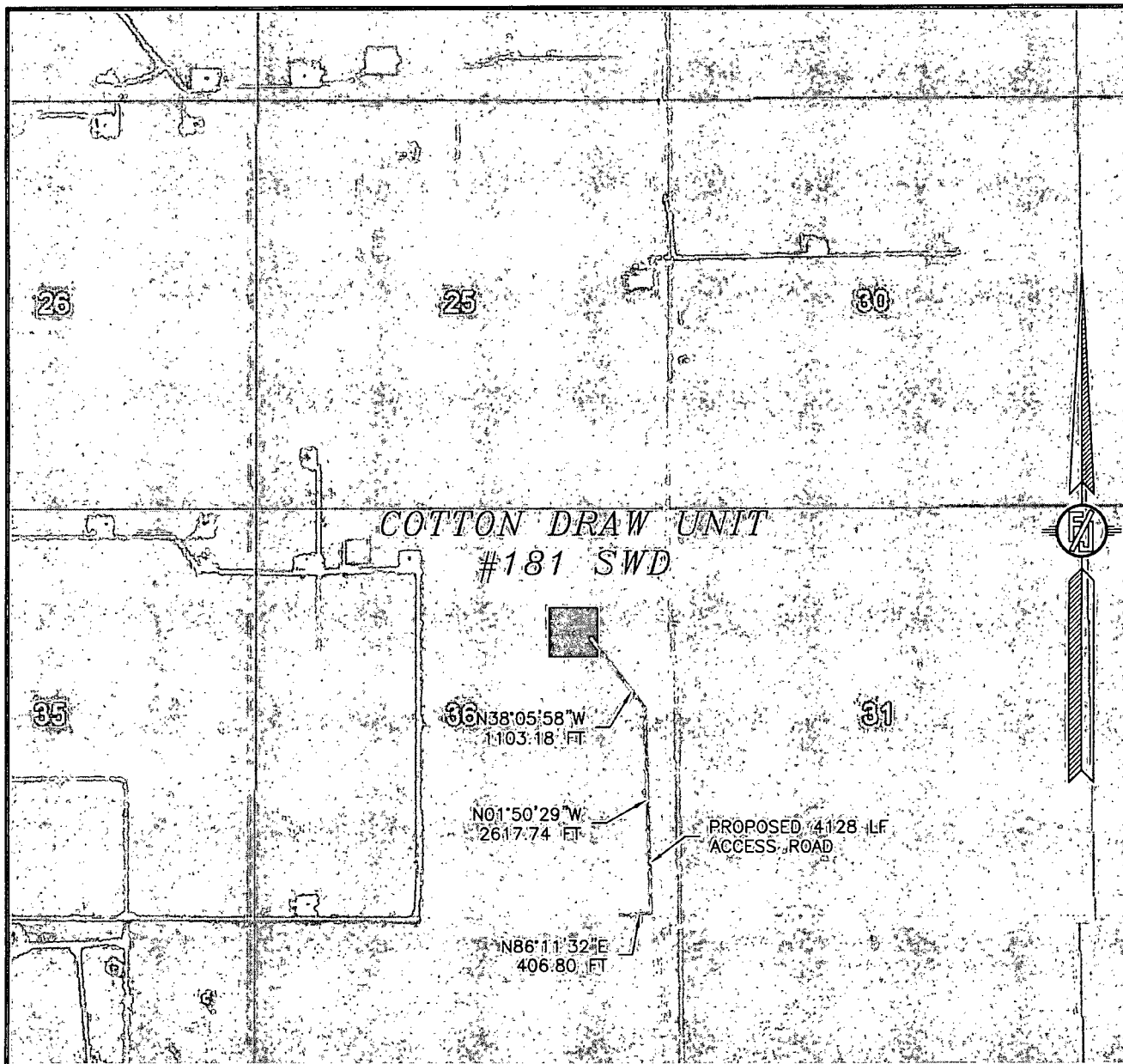
FROM THE INTERSECTION OF STATE HIGHWAY 1 (ORLA HIGHWAY) AND MONSANTO ROAD GO WEST ON MONSANTO ROAD APPROX. 2.1 MILES, ROAD TURNS RIGHT (NORTH) GO NORTH APPROX. 0.9 MILES, ROAD TURNS LEFT (WEST) GO WEST APPROX. 2.0 MILES, ROAD TURNS RIGHT (NORTH) GO NORTH APPROX. 1.8 MILES, ROAD TURNS LEFT (WEST) GO WEST APPROX. 0.3 MILES, ROAD TURNS RIGHT (NORTH) GO NORTH CROSS CATTLE GUARD APPROX. 0.4 MILES, TURN RIGHT (EAST) GO EAST APPROX. 1.2 MILES TO EXISTING DEVON COTTON DRAW UNIT #116H. CENTERLINE OF PROPOSED ROAD STARTS ON THE SOUTH EDGE OF PAD, GO EAST APPROX. 400' AND TURN LEFT (NORTH) ON EAST EDGE OF PAD, CENTERLINE PROPOSED ROAD GOES (NORTH) APPROX. 0.5 MILES, ROAD TURNS LEFT (NORTHWEST) PARALLELING PIPELINE APPROX. 0.2 MILES TO LOCATION.

SURVEY NO. 2181A

MADRON SURVEYING, INC. 301 SOUTH CANAL
(575) 234-3341

CARLSBAD, NEW MEXICO

SECTION 36, TOWNSHIP 24 SOUTH, RANGE 31 EAST, N.M.P.M.
EDDY COUNTY, STATE OF NEW MEXICO
AERIAL PHOTO



NOT TO SCALE
AERIAL PHOTO:
GOOGLE EARTH
MARCH 2012

DEVON ENERGY PRODUCTION COMPANY, L.P.

COTTON DRAW UNIT #181 SWD

LOCATED 1568 FT. FROM THE NORTH LINE
AND 1189 FT. FROM THE EAST LINE OF
SECTION 36, TOWNSHIP 24 SOUTH,
RANGE 31 EAST, N.M.P.M.
EDDY COUNTY, STATE OF NEW MEXICO

AUGUST 29, 2013

SURVEY NO. 2181A

MADRON SURVEYING, INC. 301 SOUTH CANAL CARLSBAD, NEW MEXICO
(575) 234-3341