

**District I**  
1625 N. French Dr., Hobbs, NM 88240  
Phone: (575) 393-6161 Fax: (575) 393-0720

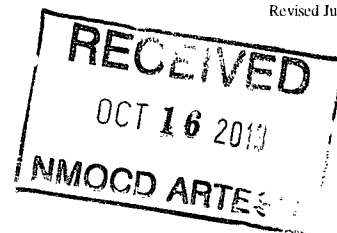
**District II**  
811 S. First St., Artesia, NM 88210  
Phone: (575) 748-1283 Fax: (575) 748-9720

**District III**  
1000 Rio Brazos Road, Aztec, NM 87410  
Phone: (505) 334-6178 Fax: (505) 334-6170

**District IV**  
1220 S. St. Francis Dr., Santa Fe, NM 87505  
Phone: (505) 476-3460 Fax: (505) 476-3462

**State of New Mexico**  
**Energy Minerals and Natural Resources**  
**Oil Conservation Division**  
**1220 South St. Francis Dr.**  
**Santa Fe, NM 87505**

Form C-101  
Revised July 18, 2013



**APPLICATION FOR PERMIT TO DRILL, RE-ENTER, DEEPEN, PLUGBACK, OR ADD A ZONE**

<sup>1</sup> Operator Name and Address COG Operating LLC 2208 West Main Street Artesia, NM 88210		<sup>2</sup> OGRID Number 229137
<sup>4</sup> Property Code 40112		<sup>3</sup> Property Name SRO State Com
		<sup>5</sup> APL Number 30-015-41740
		<sup>6</sup> Well No 29H

**7. Surface Location**

UL - Lot	Section	Township	Range	Lot Idn	Feet from	N/S Line	Feet From	E/W Line	County
1C	3	26S	28E	1	190	North	1650	West	Eddy

**\* Proposed Bottom Hole Location**

UL - Lot	Section	Township	Range	Lot Idn	Feet from	N/S Line	Feet From	E/W Line	County
N	10	26S	28E	N	330	South	1850	West	Eddy

**9. Pool Information**

<sup>9</sup> Pool Name Red Bluff Hay Hollow, Bone Spring, South	<sup>10</sup> Pool Code 20215
---	----------------------------------

**Additional Well Information**

<sup>11</sup> Work Type New Well	<sup>12</sup> Well Type Oil	<sup>13</sup> Cable/Rotary	<sup>14</sup> Lease Type State	<sup>15</sup> Ground Level Elevation 2954.4
<sup>16</sup> Multiple N	<sup>17</sup> Proposed Depth 17952	<sup>18</sup> Formation Bone Spring	<sup>19</sup> Contractor	<sup>20</sup> Spud Date 10/29/2013
Depth to Ground water		Distance from nearest fresh water well		Distance to nearest surface water

☒ We will be using a closed-loop system in lieu of lined pits

**21. Proposed Casing and Cement Program**

Type	Hole Size	Casing Size	Casing Weight/ft	Setting Depth	Sacks of Cement	Estimated TOC
Surface	17.5	13.375	48	350	365	
Intrmd	12.25	9.625	36	2510	850	
Production	7.875	5.5	17	17952	3010	2210

**Casing/Cement Program: Additional Comments**

Drill 17-1/2" hole to ~350' w/ fresh water spud mud. Run 13-3/8" 48# H40 STC casing to TD and cement to surface in one stage. Will use 1" tubing and Class C w/ 2% CaCl<sub>2</sub> to cement to surface, if necessary.

Drill 12-1/4" hole to ~2510' with saturated brine water. Run 9-5/8" 36# J55 LTC casing to TD and cement to surface in one stage.

Drill 7-7/8" vertical hole, curve and lateral to 17952' with cut brine. Run 5-1/2" 17# P110 LTC casing to TD and cement in one stage bringing TOC to 2210' (300' overlap).

**22. Proposed Blowout Prevention Program**

Type	Working Pressure	Test Pressure	Manufacturer
Double Ram	3000	3000	Cameron

<sup>23</sup> I hereby certify that the information given above is true and complete to the best of my knowledge and belief. I further certify that I have complied with 19.15.14.9 (A) NMAC <input checked="" type="checkbox"/> and/or 19.15.14.9 (B) NMAC <input checked="" type="checkbox"/> , if applicable. Signature: <i>Mayte Reyes</i>		<b>OIL CONSERVATION DIVISION</b>	
Printed name: Mayte Reyes		Approved By: <i>T. C. Shepard</i>	
Title: Regulatory Analyst		Title: <b>Geologist</b>	
E-mail Address: mreyes1@concho.com		Approved Date: <i>10/17/2013</i> Expiration Date: <i>10/17/2015</i>	
Date: 10/15/2013	Phone: 575-748-6945	Conditions of Approval Attached	

DISTRICT I  
1625 N. FRENCH DR., BOBBS, NM 88240  
Phone: (575) 393-6161 Fax: (575) 393-0720

DISTRICT II  
1301 W. GRAND AVENUE, ARTESIA, NM 88210  
Phone: (575) 748-1283 Fax: (575) 748-9720

DISTRICT III  
1000 RIO BRAZOS RD., AZTEC, NM 87410  
Phone: (505) 334-6178 Fax: (505) 334-6170

DISTRICT IV  
11865 S. ST. FRANCIS DR., SANTA FE, NM 87505  
Phone: (505) 476-3460 Fax: (505) 476-3462

State of New Mexico  
Energy, Minerals & Natural Resources Department  
**OIL CONSERVATION DIVISION**  
11885 SOUTH ST. FRANCIS DR.  
Santa Fe, New Mexico 87505

Form C-102  
Revised August 1, 2011  
Submit one copy to appropriate

☐ AMENDED REPORT

WELL LOCATION AND ACREAGE DEDICATION PLAT

API Number 30-015- <b>41740</b>	Pool Code <b>30215</b>	Pool Name <b>Red Bluff</b> Hay Hollow; Bone Spring, South
Property Code <b>40112</b>	Property Name <b>SRO STATE COM</b>	Well Number 29H
GRID No. 229137	Operator Name <b>COG OPERATING, LLC</b>	Elevation 2954.4

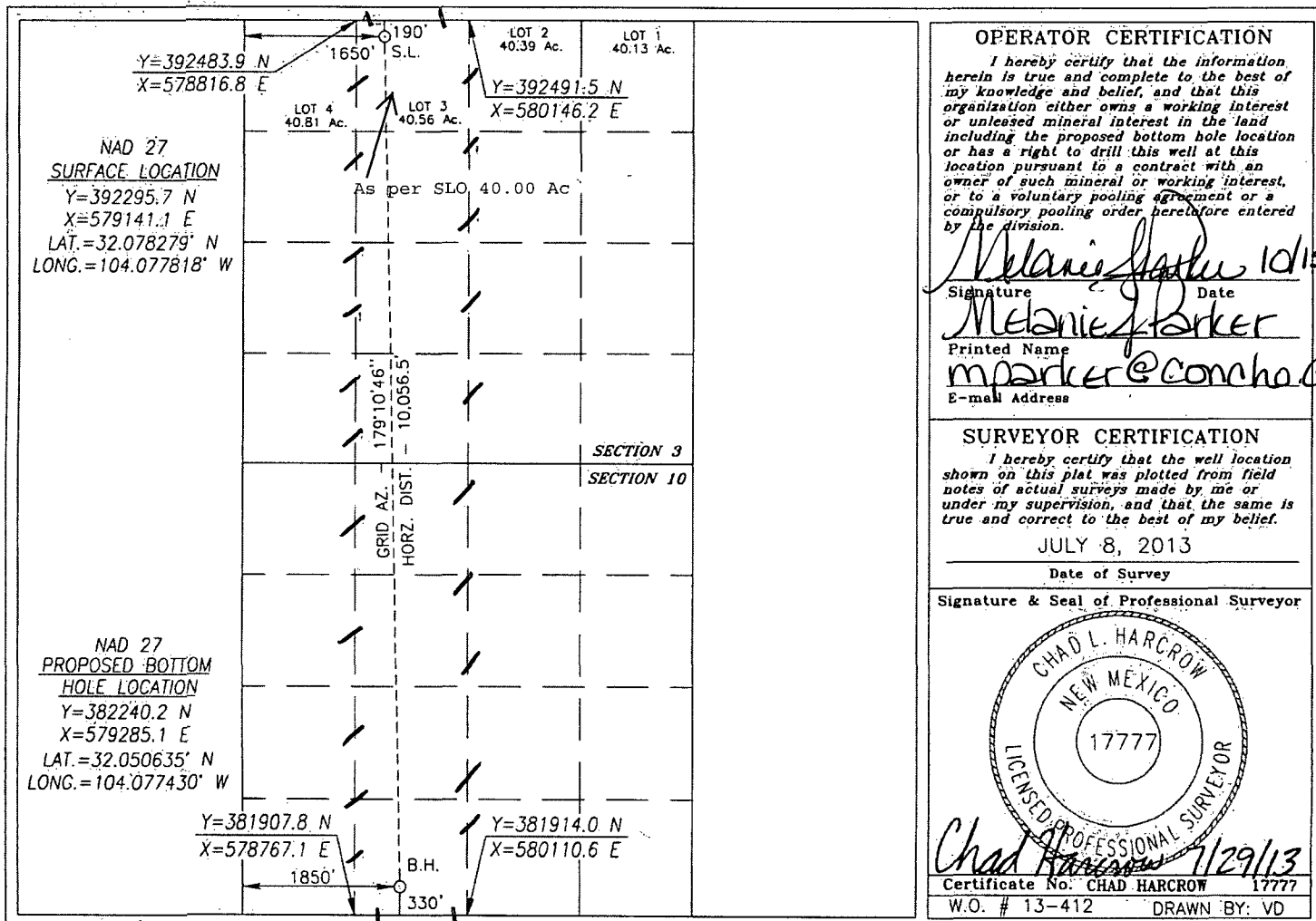
Surface Location

UL or lot No.	Section	Township	Range	Lot Idn	Feet from the	North/South line	Feet from the	East/West line	County
3	3	26-S	28-E		190	NORTH	1650	WEST	EDDY

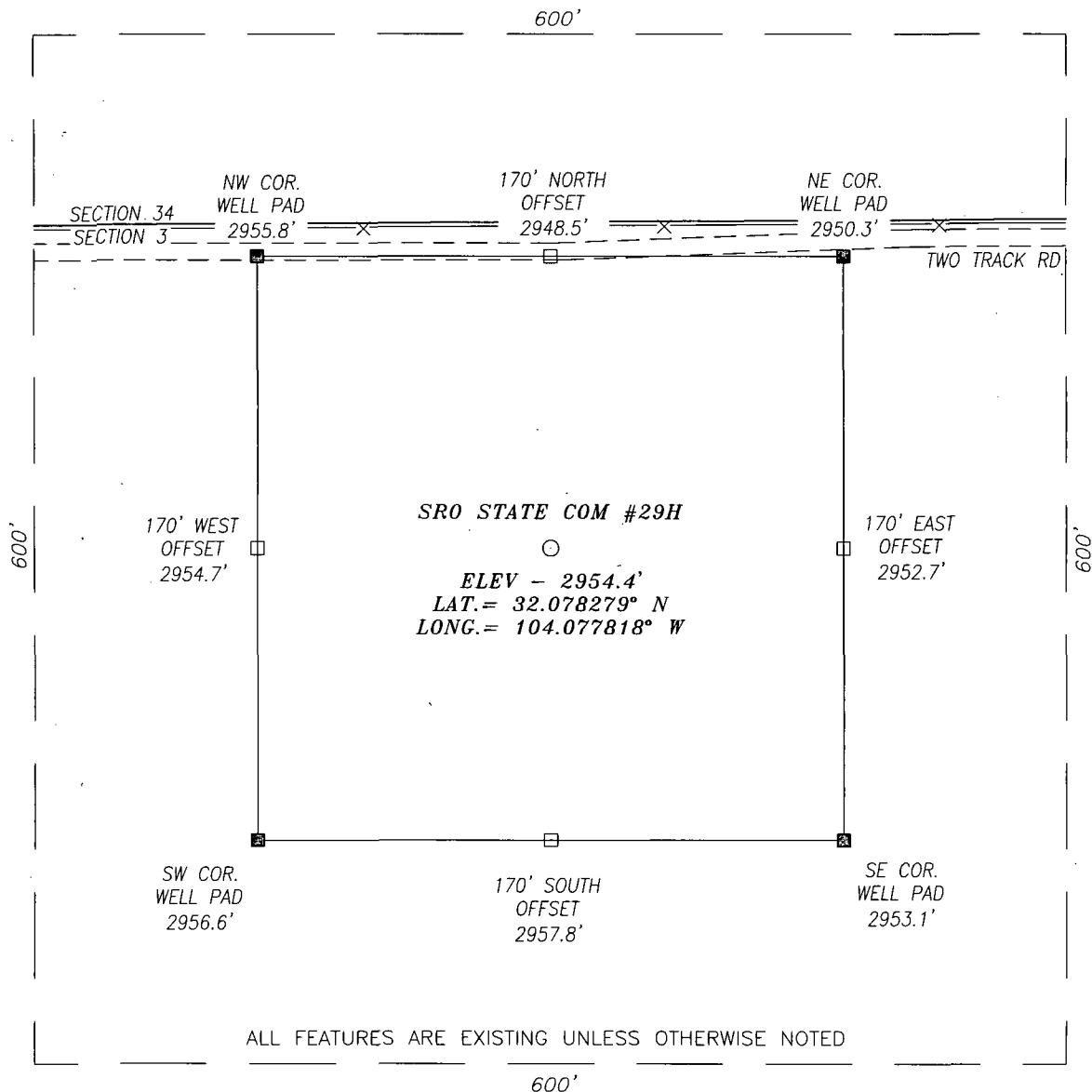
Bottom Hole Location If Different From Surface

UL or lot No.	Section	Township	Range	Lot Idn	Feet from the	North/South line	Feet from the	East/West line	County
N	10	26-S	28-E		330	SOUTH	1850	WEST	EDDY
Dedicated Acres	Joint or Infill	Consolidation Code	Order No.						
320									

NO ALLOWABLE WILL BE ASSIGNED TO THIS COMPLETION UNTIL ALL INTERESTS HAVE BEEN CONSOLIDATED  
OR A NON-STANDARD UNIT HAS BEEN APPROVED BY THE DIVISION

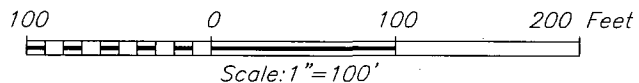


SECTION 3, TOWNSHIP 26 SOUTH, RANGE 28 EAST, N.M.P.M.,  
EDDY COUNTY NEW MEXICO



DIRECTIONS TO LOCATION

HEADING SOUTH ON HWY 285 TURN RIGHT (WEST) APPROX. 0.7 MILE PAST MILE MARKER 6 ONTO A CALICHE RD. AND STAY ON ROAD FOR APPROX 0.8 MILE; ARRIVING AT EXISTING SRO ST UNIT #20H WELLPAD; GO TO NORTHWEST PAD CORNER AND FOLLOW TWO TRACK WEST FOR APPROX. 0.5 MILE; THEN PROPOSED WELL IS APPROX. 170 FEET SOUTH.



HARCROW SURVEYING, LLC

1107 WATSON, ARTESIA, N.M. 88210

PH: (575) 513-2570 FAX: (575) 746-2158

chad\_harcrow77@yahoo.com



COG OPERATING, LLC

SRO STATE COM #29H WELL  
LOCATED 190 FEET FROM THE NORTH LINE  
AND 1650 FEET FROM THE WEST LINE OF SECTION 3,  
TOWNSHIP 26 SOUTH, RANGE 28 EAST, N.M.P.M.,  
EDDY COUNTY, NEW MEXICO

SURVEY DATE: 07/08/2013

PAGE: 1 OF 1

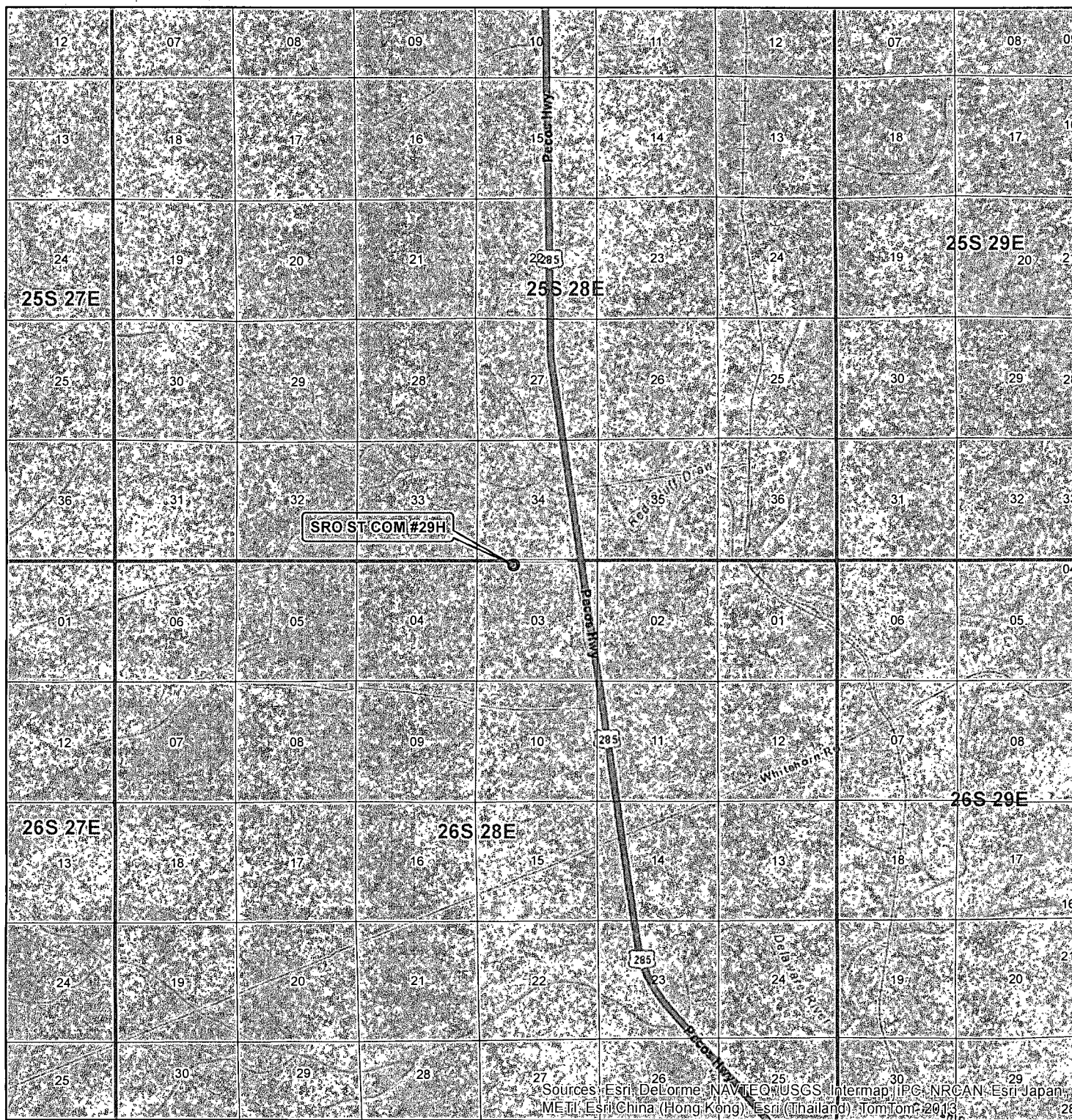
DRAFTING DATE: 07/10/2013

APPROVED BY: CH

DRAWN BY: VD

FILE: 13-412

# VICINITY MAP



SEC. 3, TWP. 26 S, RGE. 28E  
 SURVEY: N.M.P.M.  
 COUNTY: EDDY STATE: NEW MEXICO  
 DESCRIPTION: SRO ST COM #29H  
 190' FNL, 1650' FWL  
 ELEVATION: 2954.4'  
 OPERATOR: COG OPERATING LLC  
 LEASE: SRO ST COM

W.O. # 13-412

● WELL  
 □ TOWNSHIP  
 □ SECTION

HARCROW SURVEYING, LLC  
 1107 WATSON, ARTESIA N.M. 88210  
 PH: (575) 313-2570 FAX: (575) 746-2158  
 chad\_harcrow77@yahoo.com



MAP DATE: 7/16/2013

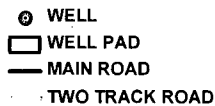
## LOCATION VERIFICATION MAP



SEC. 3, TWP. 26 S, RGE. 28E  
SURVEY: N.M.P.M  
COUNTY: EDDY STATE: NEW MEXICO  
DESCRIPTION: SRO ST COM #29H  
190' FNL, 1650' FWL

ELEVATION: 2954.4'  
OPERATOR: COG OPERATING LLC  
LEASE: SRO ST COM

W.O. # 13-412



1 IN = 2,000 FT

0 2,000 4,000 FEET

0 0.5 MILES

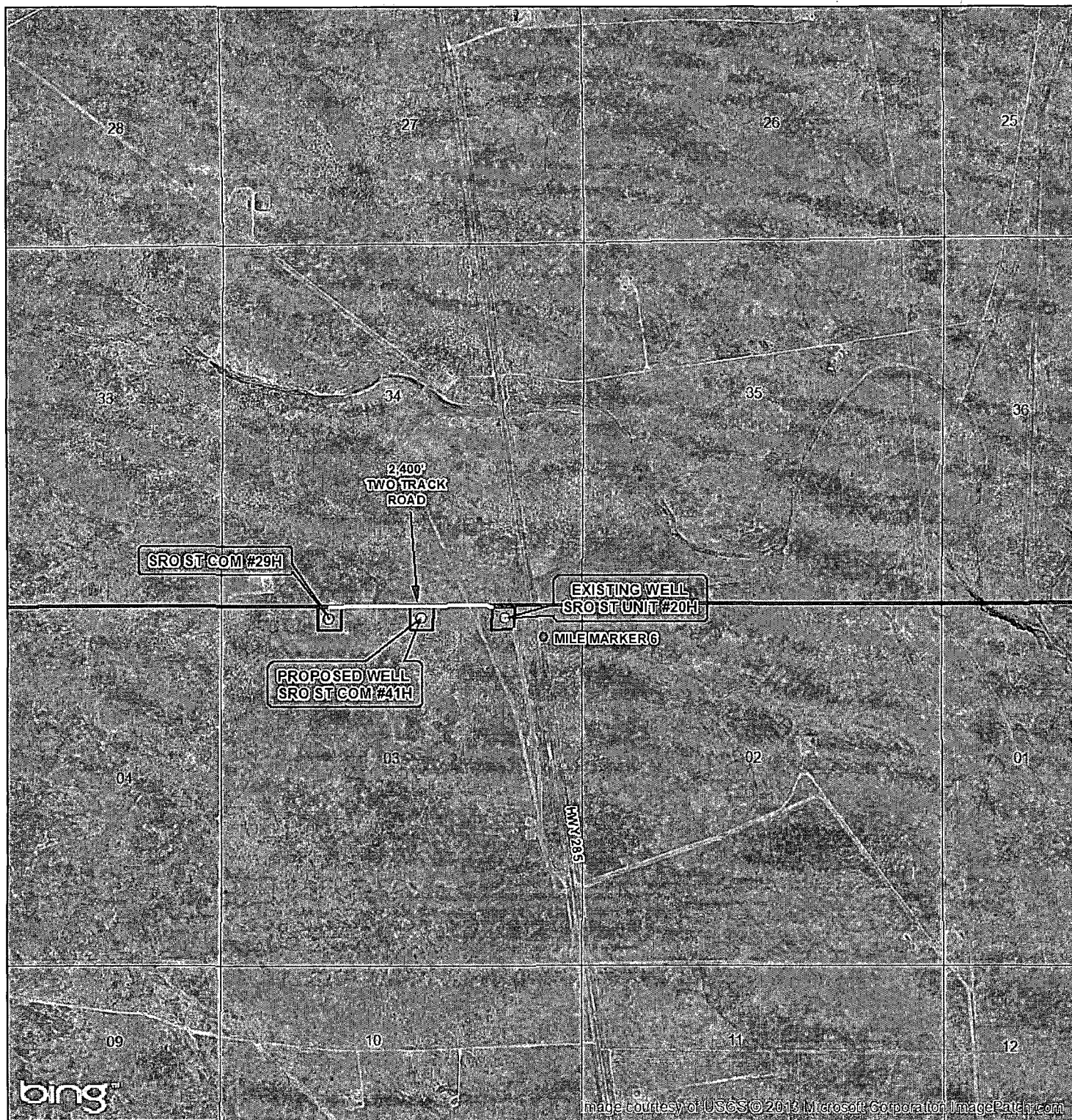
HARCROW SURVEYING, LLC  
1107 WATSON, ARTESIA N.M. 88210  
PH: (575) 513-2570 FAX: (575) 746-2158  
chad\_harcrow77@yahoo.com



MAP DATE: 7/16/2013



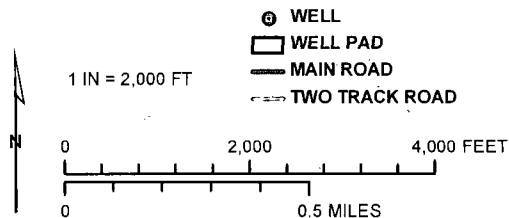
# LOCATION VERIFICATION MAP



SEC. 3, TWP. 26 S, RGE. 28E  
 SURVEY: N.M.P.M.  
 COUNTY: EDDY STATE: NEW MEXICO  
 DESCRIPTION: SRO ST COM #29H  
 190' FNL, 1650' FWL

ELEVATION: 2954.4'  
 OPERATOR: COG OPERATING LLC  
 LEASE: SRO ST COM

W.O. # 13-412



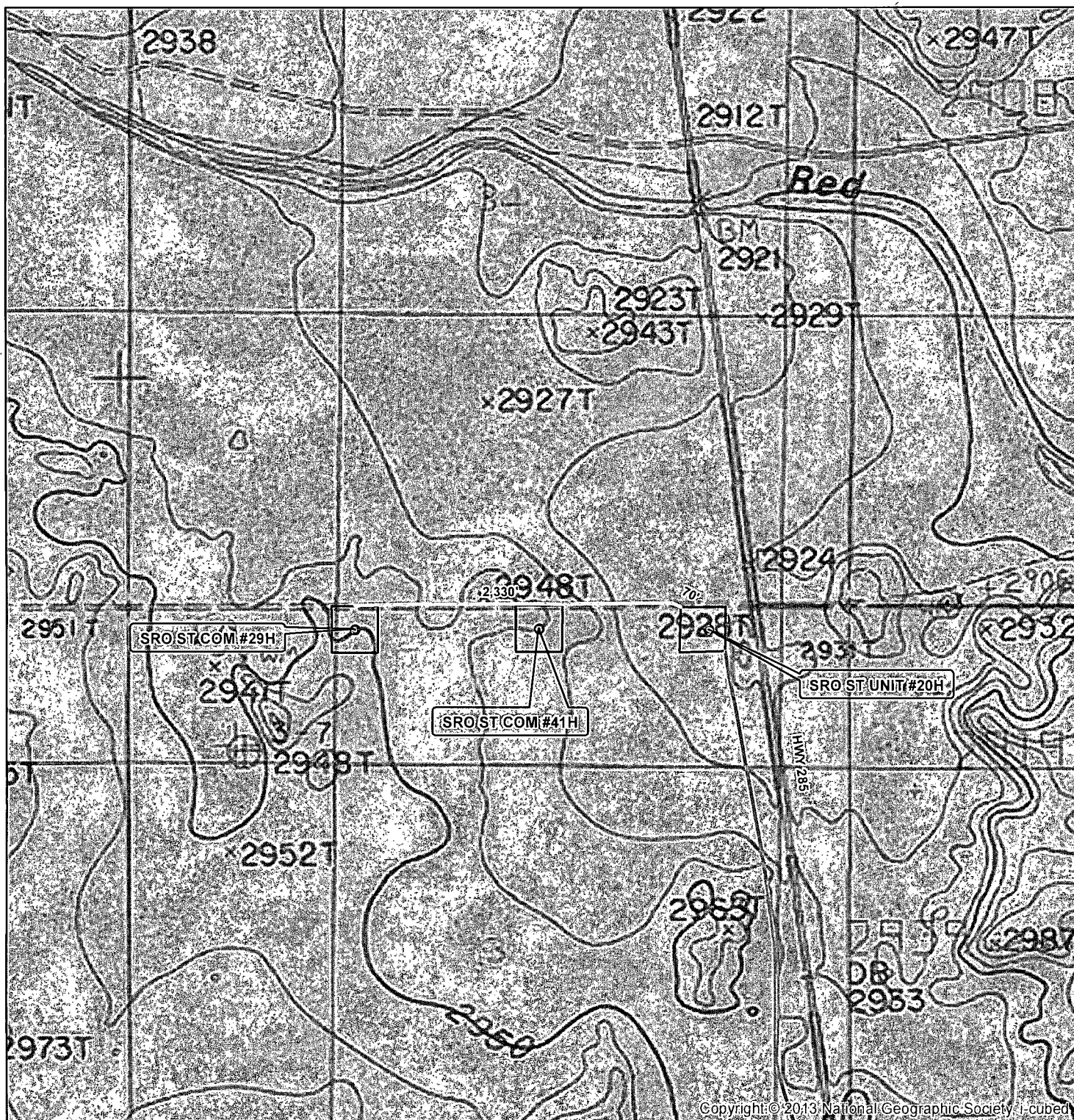
HARCROW SURVEYING, LLC  
 1107 WATSON, ARTESIA N.M. 88210  
 PH: (575) 513-2570 FAX: (575) 746-2158  
 chad\_harcrow77@yahoo.com



MAP DATE: 7/16/2013



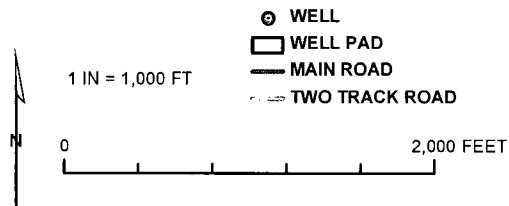
# ACCESS ROAD MAP



SEC. 3, TWP. 26 S, RGE. 28E  
 SURVEY: N.M.P.M  
 COUNTY: EDDY STATE: NEW MEXICO  
 DESCRIPTION: SRO ST COM #29H, #41H,  
 & #20H

OPERATOR: COG OPERATING LLC  
 LEASE: SRO ST COM

W.O. # 13-412



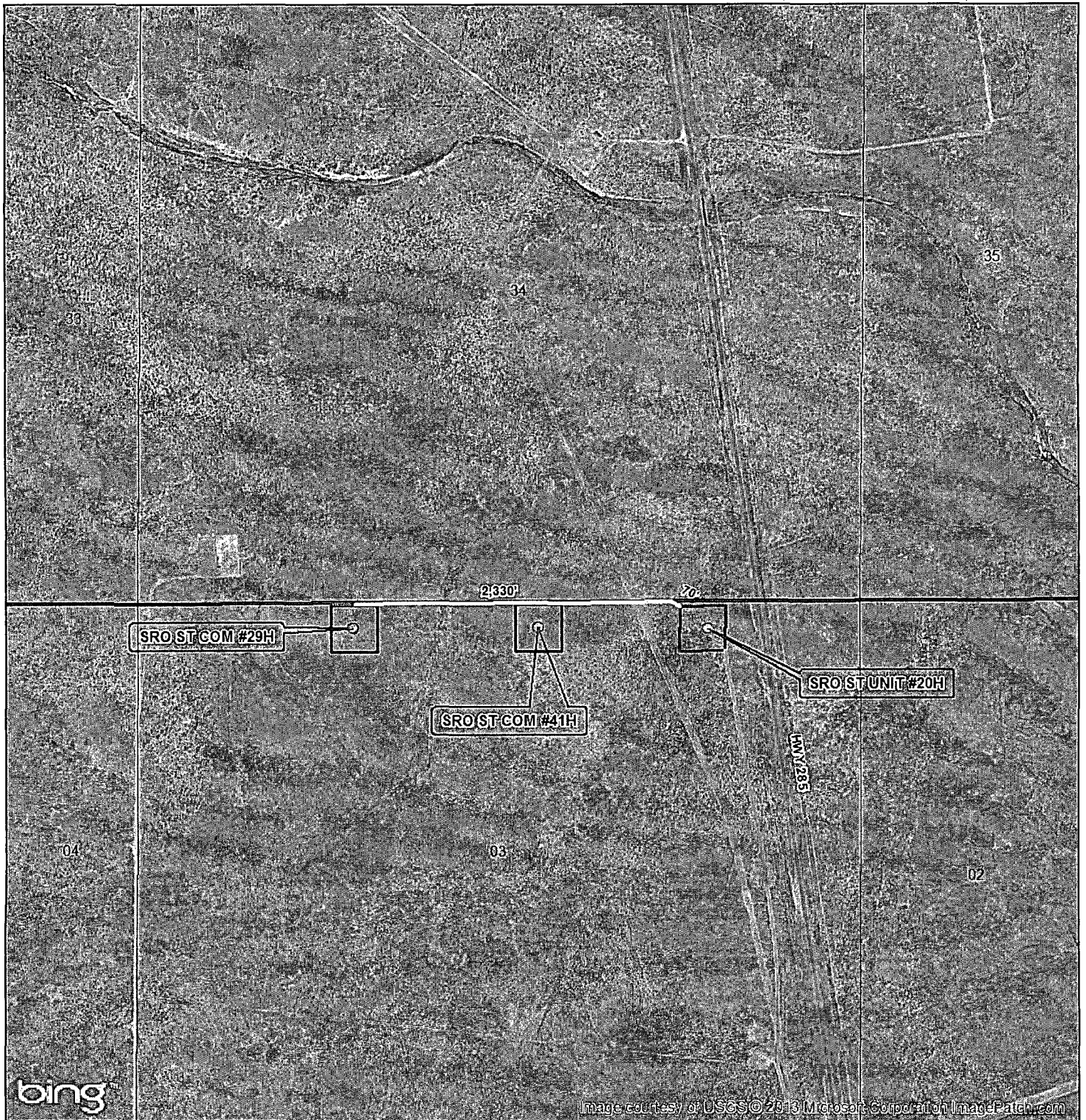
HARCROW SURVEYING, LLC  
 1107 WATSON, ARTESIA N.M. 88210  
 PH: (575) 513-2570 FAX: (575) 746-2158  
 chad\_harcrow77@yahoo.com



MAP DATE: 7/29/2013



# ACCESS ROAD MAP



SEC. 3, TWP. 26 S., RGE. 28E  
 SURVEY: N.M.P.M  
 COUNTY: EDDY STATE: NEW MEXICO  
 DESCRIPTION: SRO ST COM #29H, #41H,  
 & #20H

OPERATOR: COG OPERATING LLC  
 LEASE: SRO ST COM

W.O. # 13-412



1 IN = 1,000 FT

0 2,000 FEET

- WELL
- WELL PAD
- MAIN ROAD
- - - TWO TRACK ROAD

HARCROW SURVEYING, LLC  
 1107 WATSON, ARTESIA N.M. 88210  
 PH: (575) 513-2570 FAX: (575) 746-2158  
 chad\_harcrow77@yahoo.com



MAP DATE: 7/29/2013



## Permit Conditions of Approval

API: 30-015-41740

OCD Reviewer	Condition
CSHAPARD	Once the well is spud, to prevent ground water contamination through whole or partial conduits from the surface, the operator shall drill without interruption through the fresh water zone or zones and shall immediately set in cement the water protection string