

DISTRICT I
1625 N. French Dr., Hobbs, NM 88240
Phone: (575) 393-6161 Fax: (575) 393-0720

DISTRICT II
811 S. First St., Artesia, NM 88210
Phone: (575) 748-1283 Fax: (575) 748-9720

DISTRICT III
1000 Rio Brazos Road, Aztec, NM 87410
Phone: (505) 334-6178 Fax: (505) 334-6170

DISTRICT IV
1220 S. St. Francis Dr., Santa Fe, NM 87505
Phone: (505) 476-3460 Fax: (505) 476-3462

State of New Mexico
Energy, Minerals & Natural Resources Department
OIL CONSERVATION DIVISION
1220 South St. Francis Dr.
Santa Fe, New Mexico 87505

Form C-102
Revised August 1, 2011
Submit one copy to appropriate
District Office

☐ AMENDED REPORT

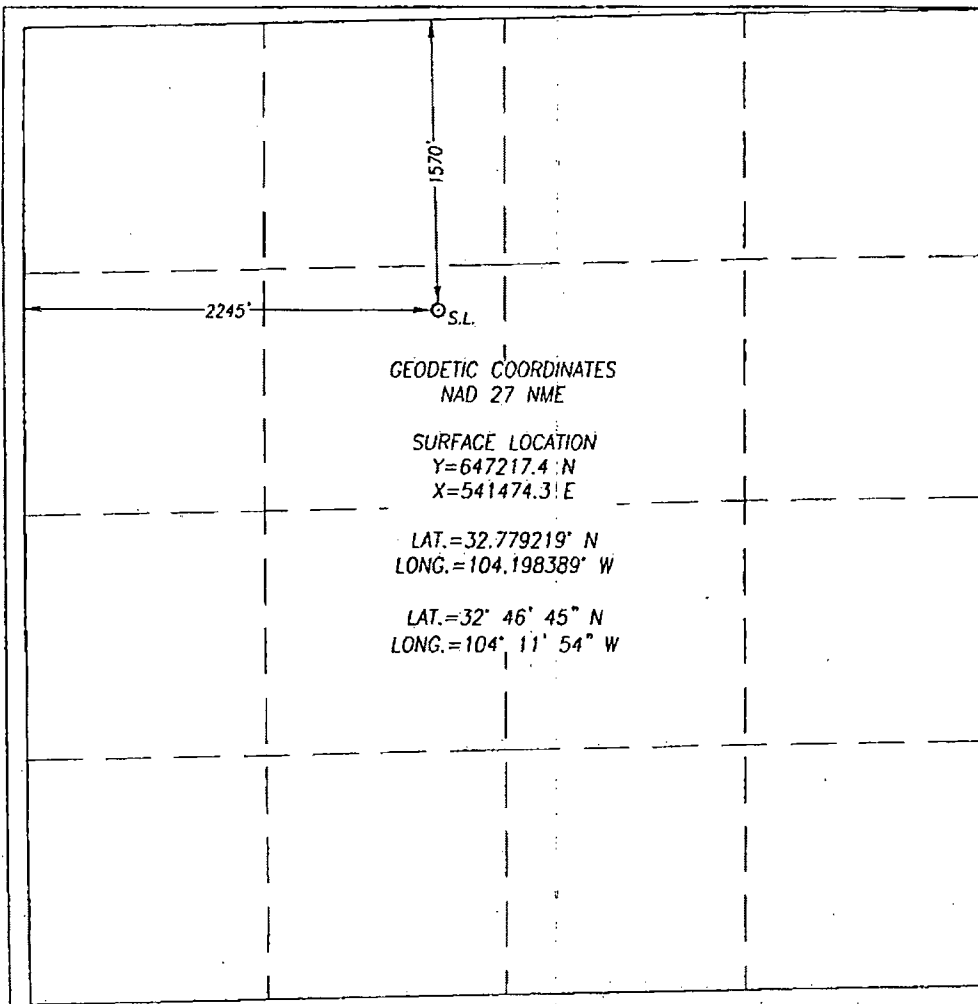
WELL LOCATION AND ACREAGE DEDICATION PLAT

API Number 30-015-41767	Pool Code 96830	Pool Name Artesia; Glorieta - Yeso
Property Code 40197	Property Name LIBBY STATE	Well Number 2
OGRID No. 873	Operator Name APACHE CORPORATION	Elevation 3654'

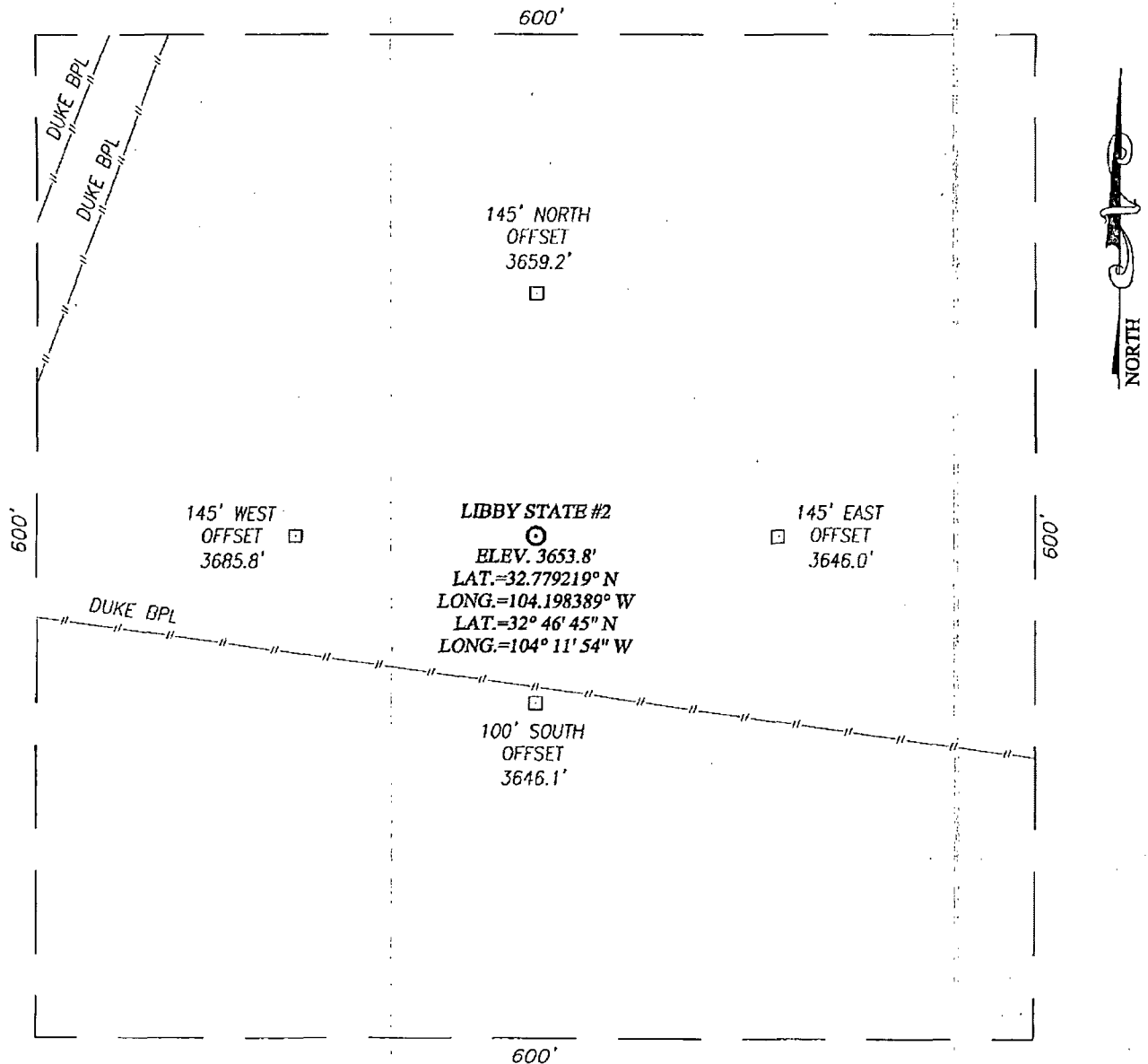
Surface Location									
UL or lot No.	Section	Township	Range	Lot Idn	Feet from the	North/South line	Feet from the	East/West line	County
F	5	18-S	28-E		1570	NORTH	2245	WEST	EDDY

Bottom Hole Location If Different From Surface									
UL or lot No.	Section	Township	Range	Lot Idn	Feet from the	North/South line	Feet from the	East/West line	County
Dedicated Acres 40	Joint or Infill	Consolidation Code	Order No.						

NO ALLOWABLE WILL BE ASSIGNED TO THIS COMPLETION UNTIL ALL INTERESTS HAVE BEEN CONSOLIDATED OR A NON-STANDARD UNIT HAS BEEN APPROVED BY THE DIVISION

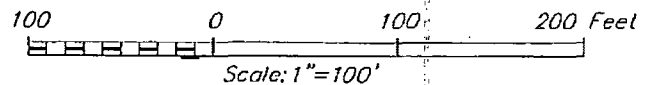


<p>OPERATOR CERTIFICATION</p> <p>I hereby certify that the information herein is true and complete to the best of my knowledge and belief, and that this organization either owns a working interest or unleased mineral interest in the land including the proposed bottom hole location or has a right to drill this well at this location pursuant to a contract with an owner of such mineral or working interest, or to a voluntary pooling agreement or a compulsory pooling order heretofore entered by the division.</p> <p><i>Michelle Cooper</i> 10-29-13 Signature Date</p> <p><i>Michelle Cooper</i> Printed Name</p> <p><i>michelle.cooper@apachecorp.com</i> E-mail Address</p>
<p>SURVEYOR CERTIFICATION</p> <p>I hereby certify that the well location shown on this plat was plotted from field notes of actual surveys made by me or under my supervision, and that the same is true and correct to the best of my belief.</p> <p>AUGUST 26, 2013</p> <p>Date of Survey</p> <p>Signature of Professional Surveyor:</p> <p><i>Ronald J. Eidson</i></p> <p>NEW MEXICO 3239</p> <p>Certification Number: 12641 Professional Surveyor: Ronald J. Eidson 3239</p> <p>BKL JWSC W.O.: 13.11.0940</p>



DIRECTIONS TO LOCATION

FROM THE INTERSECTION OF COUNTY RD. 230 (BOOT TOP) AND COUNTY RD. 201 (ILLINOIS CAMP RD.) GO SOUTHEAST APPROX. 0.2 MILES. THIS STAKED LOCATION IS 700 FEET EAST.



APACHE CORPORATION

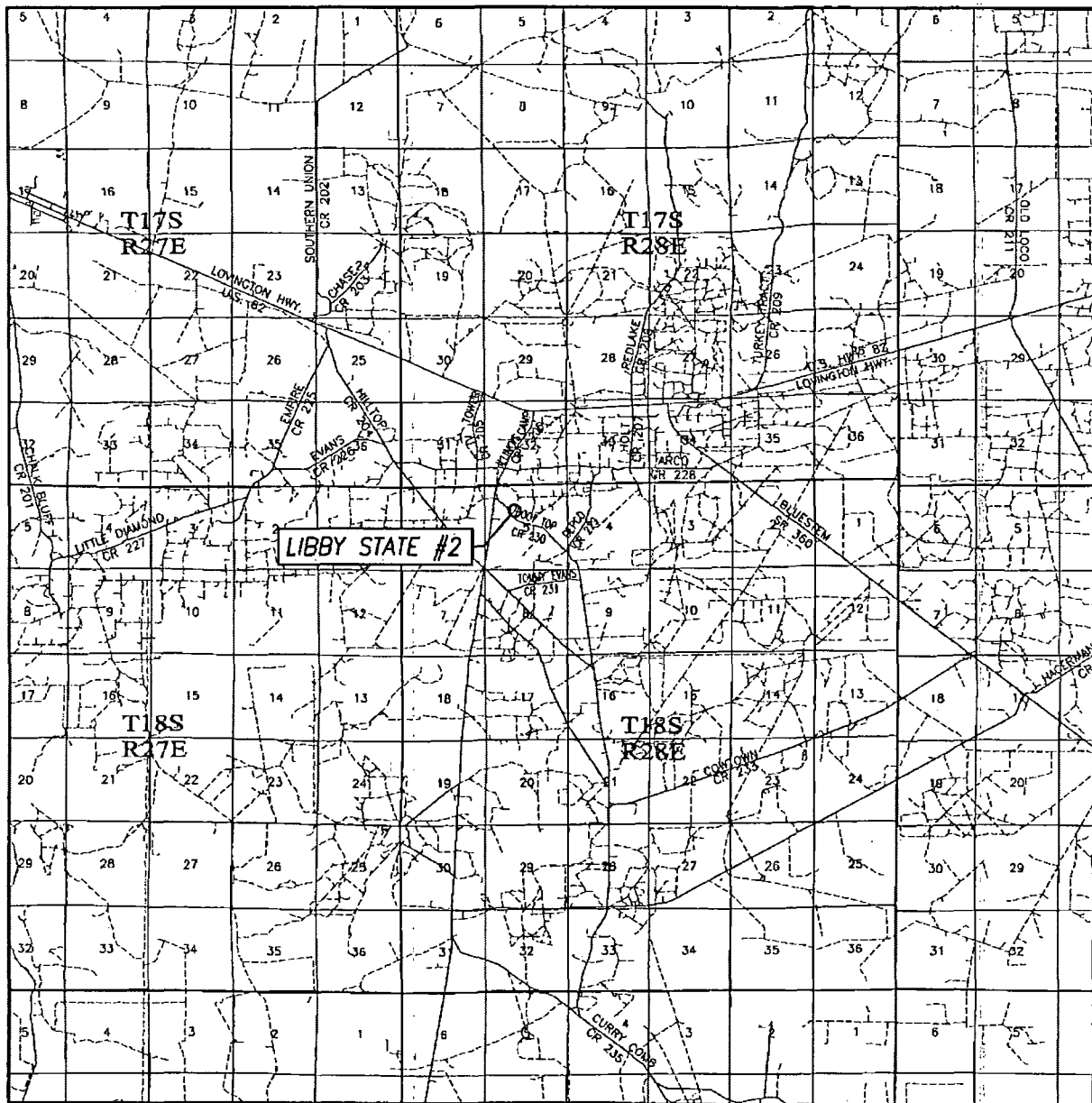
LIBBY STATE #2 WELL
LOCATED 1570 FEET FROM THE NORTH LINE
AND 2245 FEET FROM THE WEST LINE OF SECTION 5,
TOWNSHIP 18 SOUTH, RANGE 28 EAST, N.M.P.M.,
EDDY COUNTY, NEW MEXICO



PROVIDING SURVEYING SERVICES
SINCE 1946
JOHN WEST SURVEYING COMPANY
412 N. DAL PASO
HOBBS, N.M. 88240
(575) 393-3117 www.jwsc.biz

Survey Date: 8/26/13	CAD Date: 9/3/13	Drawn By: BKL
W.O. No.: 13110940	Rev.:	Rel. W.O.:
		Sheet 1 of 1

VICINITY MAP



SCALE: 1" = 2 MILES

SEC. 5 TWP. 18-S RGE. 28-E
 SURVEY N.M.P.M.
 COUNTY EDDY STATE NEW MEXICO
 DESCRIPTION 1570' FNL & 2245' FWL
 ELEVATION 3654'
 OPERATOR APACHE CORPORATION
 LEASE LIBBY STATE

PROVIDING SURVEYING SERVICES
 SINCE 1946
JOHN WEST SURVEYING COMPANY
 412 N. DAL PASO
 HOBBS, N.M. 88240
 (575) 393-3117 www.jwsc.biz