

DISTRICT I
1625 N. French Dr., Hobbs, NM 88240
Phone: (575) 393-6161 Fax: (575) 393-0720

DISTRICT II
811 S. First St., Artesia, NM 88210
Phone: (575) 748-1283 Fax: (575) 748-9720

DISTRICT III
1000 Rio Arriba Road, Aztec, NM 87410
Phone: (505) 334-6178 Fax: (505) 334-6170

DISTRICT IV
1220 S. St. Francis Dr., Santa Fe, NM 87505
Phone: (505) 476-3460 Fax: (505) 476-3462

State of New Mexico
Energy, Minerals & Natural Resources Department
OIL CONSERVATION DIVISION
1220 South St. Francis Dr.
Santa Fe, New Mexico 87505

Form C-102
Revised August 1, 2011
Submit one copy to appropriate
District Office

AMENDED REPORT

WELL LOCATION AND ACREAGE DEDICATION PLAT

API Number 30-015-41769	Pool Code 96830	Pool Name Artesia; Glorieta - Yeso
Property Code 40197	Property Name LIBBY STATE	Well Number 4
OGRID No. 873	Operator Name APACHE CORPORATION	Elevation 3655'

Surface Location

UL or lot No.	Section	Township	Range	Lot Idn	Feet from the	North/South line	Feet from the	East/West line	County
F	5	18-S	28-E		2455	NORTH	2150	WEST	EDDY

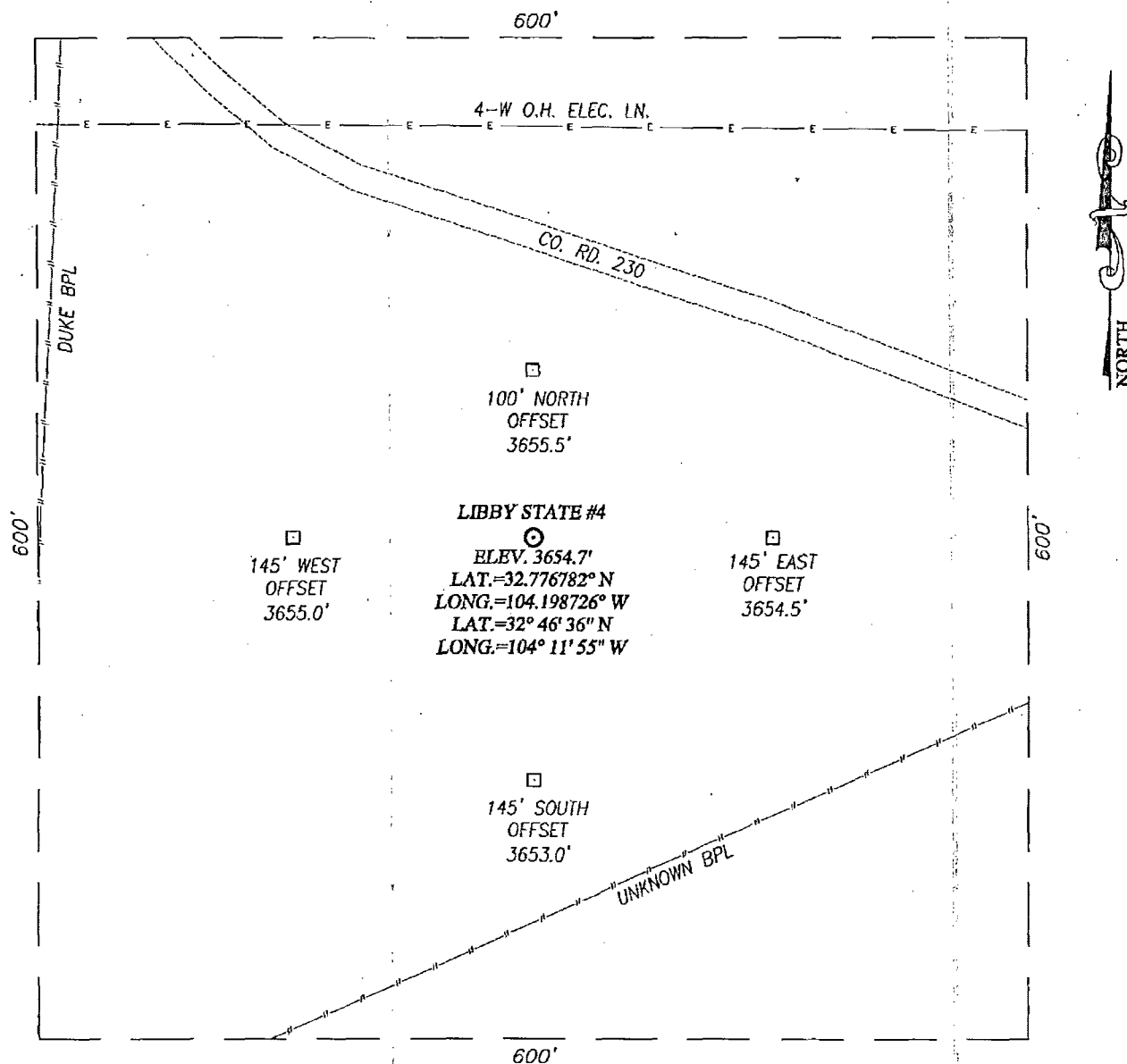
Bottom Hole Location If Different From Surface

UL or lot No.	Section	Township	Range	Lot Idn	Feet from the	North/South line	Feet from the	East/West line	County

Dedicated Acres	Joint or Infill	Consolidation Code	Order No.
40			

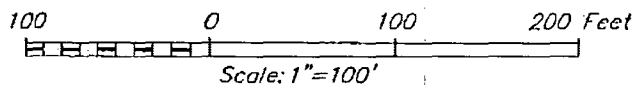
NO ALLOWABLE WILL BE ASSIGNED TO THIS COMPLETION UNTIL ALL INTERESTS HAVE BEEN CONSOLIDATED OR A NON-STANDARD UNIT HAS BEEN APPROVED BY THE DIVISION

	<p>OPERATOR CERTIFICATION</p> <p>I hereby certify that the information herein is true and complete to the best of my knowledge and belief, and that this organization either owns a working interest or unleased mineral interest in the land including the proposed bottom hole location or has a right to drill this well at this location pursuant to a contract with an owner of such mineral or working interest, or to a voluntary pooling agreement or a compulsory pooling order heretofore entered by the division.</p> <p><u>Michelle Cooper</u> 10-29-13 Signature Date</p> <p><u>Michelle Cooper</u> Printed Name</p> <p><u>michelle.cooper@apachecorp.com</u> E-mail Address</p>
	<p>SURVEYOR CERTIFICATION</p> <p>I hereby certify that the well location shown on this plat was plotted from field notes of actual surveys made by me or under my supervision, and that the same is true and correct to the best of my belief.</p> <p>SEPTEMBER 13, 2013</p> <p>Date of Survey</p> <p>Signature & Seal of Professional Surveyor:</p>
	<p>GEODETIC COORDINATES NAD 27 NME</p> <p>SURFACE LOCATION Y=646330.4 N X=541371.9 E</p> <p>LAT.=32.776782° N LONG.=104.198726° W</p> <p>LAT.=32° 46' 36" N LONG.=104° 11' 55" W</p>



DIRECTIONS TO LOCATION

FROM THE INTERSECTION OF US. HWY 82 AND CO. RD. 206
(ILLINOIS CAMP ROAD) GO SOUTH ON 206 APPROX. 1.1 MILES TO
CO. RD. #230 (BOOT TOP ROAD), GO SOUTHEAST APPROX. 0.5
MILES. THE LOCATION STAKE IS APPROX. 165 FEET SOUTH.



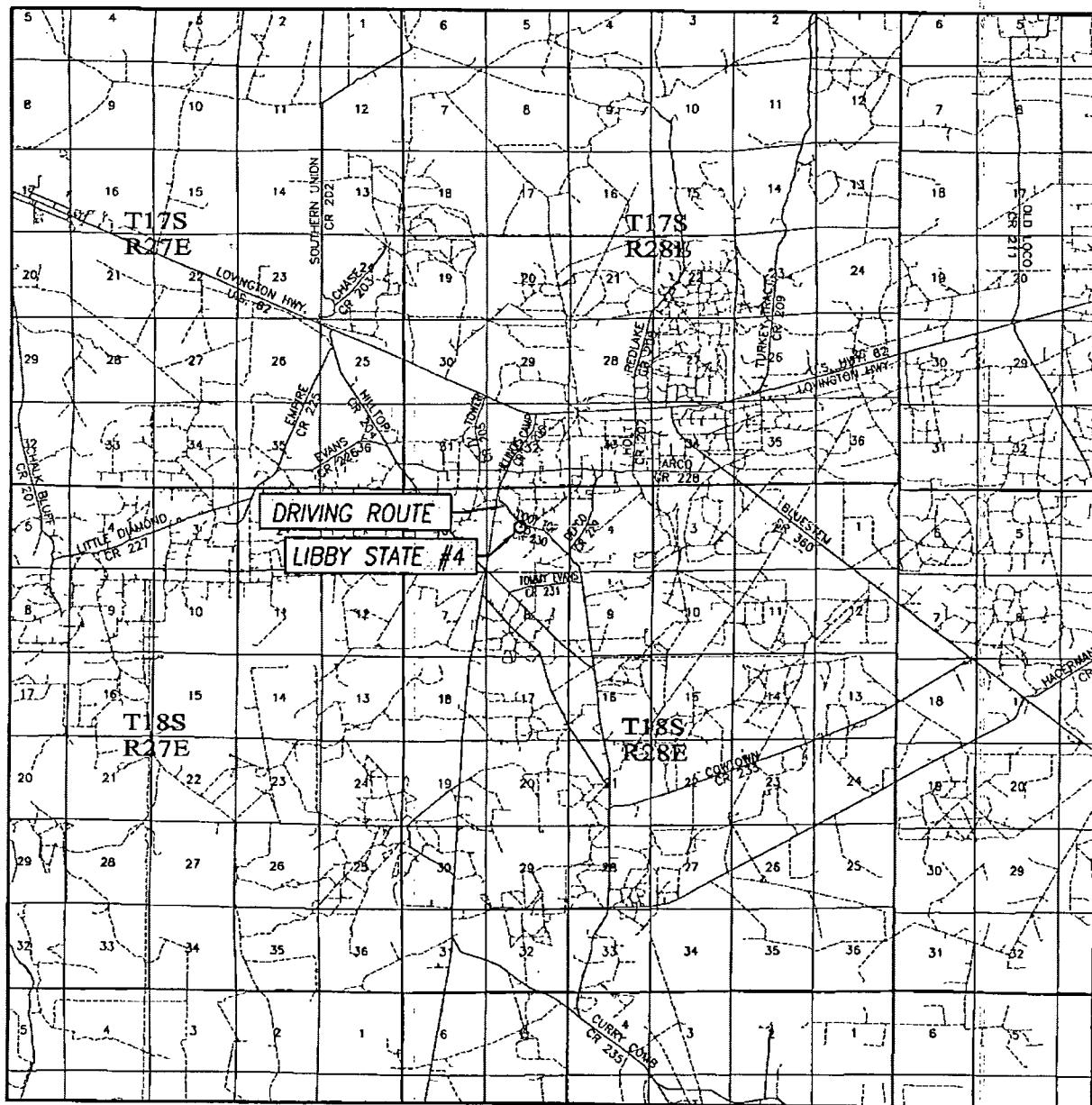
APACHE CORPORATION

LIBBY STATE #4 WELL
LOCATED 2455 FEET FROM THE NORTH LINE
AND 2150 FEET FROM THE WEST LINE OF SECTION 5,
TOWNSHIP 18 SOUTH, RANGE 28 EAST, N.M.P.M.,
EDDY COUNTY, NEW MEXICO

PROVIDING SURVEYING SERVICES
SINCE 1946
JOHN WEST SURVEYING COMPANY
412 N. DAL PASO
HOBBS, N.M. 88240
(575) 393-3117 www.jwsc.biz

Survey Date: 8/28/13	CAD Date: 9/20/13	Drawn By: BKL
W.O. No.: 13110942	Rev: .	Rel. W.O.: Sheet 1 of 1

VICINITY MAP



SCALE: 1" = 2 MILES

SEC. 5 TWP. 18-S RGE. 28-E

SURVEY N.M.P.M.

COUNTY EDDY STATE NEW MEXICO

DESCRIPTION 2455' FNL & 2150' FWL

ELEVATION 3655'

OPERATOR APACHE CORPORATION

LEASE LIBBY STATE

DIRECTIONS TO LOCATION

FROM THE INTERSECTION OF US. HWY 82 AND CO. RD. 206 (ILLINOIS CAMP ROAD) GO SOUTH ON 206 APPROX. 1.1 MILES TO CO. RD. #230 (BOOT TOP ROAD), GO SOUTHEAST APPROX. 0.5 MILES. THE LOCATION STAKE IS APPROX. 165 FEET SOUTH.

