

DISTRICT I

1625 N. French Dr., Hobbs, NM 88240
Phone (575) 393-6161 Fax: (575) 393-0980

DISTRICT II

811 S. First St., Artesia, NM 88210
Phone (575) 748-1283 Fax: (575) 748-9720

DISTRICT III

1000 Rio Brazos Rd., Aztec, NM 87410
Phone (505) 334-6178 Fax: (505) 334-6170

DISTRICT IV

1220 S. St. Francis Dr., Santa Fe, NM 87505
Phone (505) 476-3460 Fax: (505) 476-3462State of New Mexico
Energy, Minerals and Natural Resources Department

Form C-102

Revised August 1, 2011

Submit one copy to appropriate
District Office

OIL CONSERVATION DIVISION

1220 South St. Francis Dr.
Santa Fe, New Mexico 87505OCT 31 2013
NMOCD ARTESIA

WELL LOCATION AND ACREAGE DEDICATION PLAT

☐ AMENDED REPORT

| | | |
|----------------------------------|---|--|
| API Number 30-15-41782 | Pool Code | Pool Name North Seven Rivers, Glorieta-Yeso |
| Property Code 30036 | Property Name ABUNDANCE AVZ | Well Number 2H |
| OGRID No. 025575 | Operator Name YATES PETROLEUM CORPORATION | Elevation 3425 |

Surface Location

| UL or lot No. | Section | Township | Range | Lot Idn | Feet from the | North/South line | Feet from the | East/EAST line | County |
|---------------|---------|----------|-------|---------|---------------|------------------|---------------|----------------|--------|
| A | 23 | 19 S | 25 E | | 250' | NORTH | 660' | EAST | EDDY |

Bottom Hole Location If Different From Surface

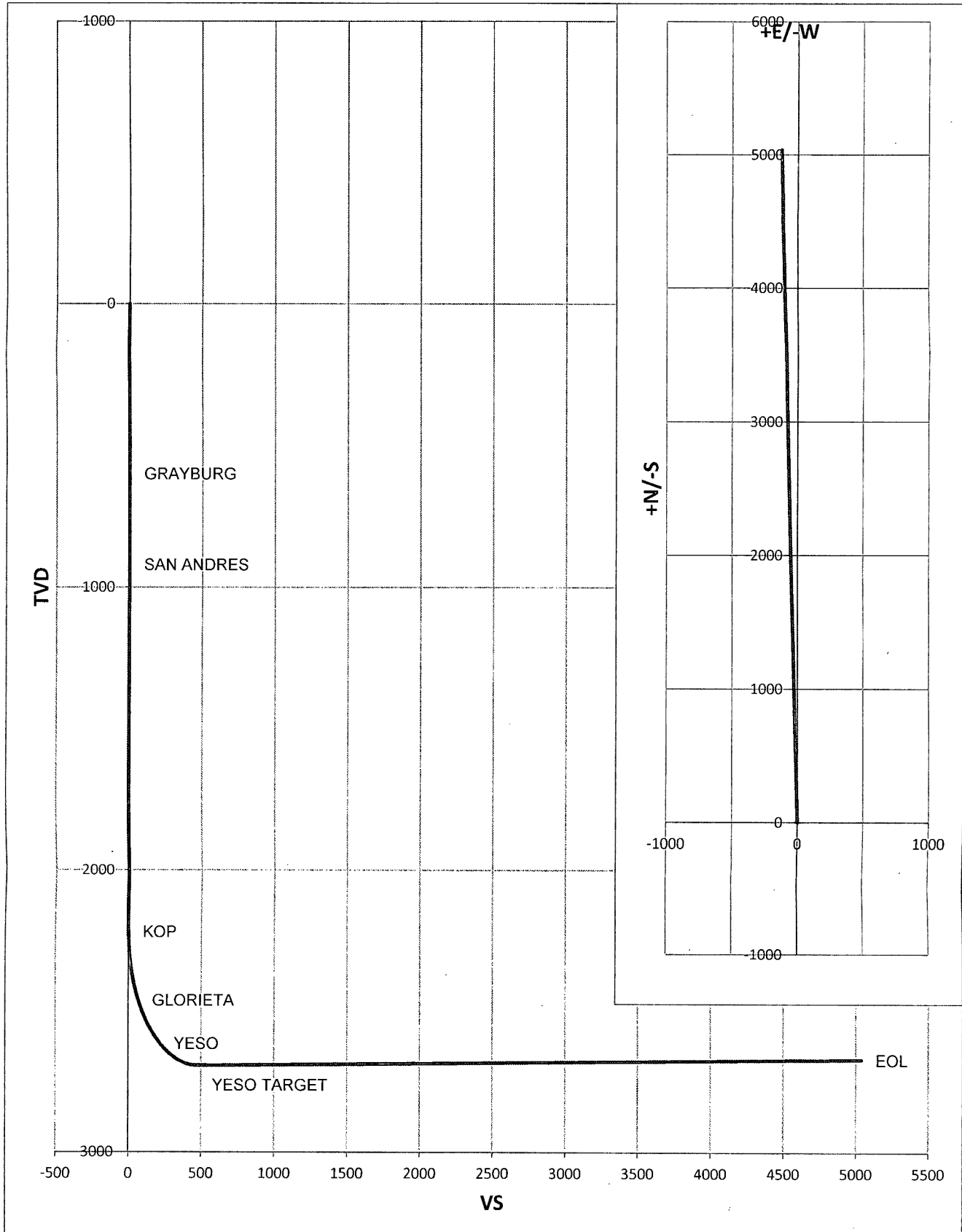
| UL or lot No. | Section | Township | Range | Lot Idn | Feet from the | North/South line | Feet from the | East/EAST line | County |
|---------------|---------|----------|-------|---------|---------------|------------------|---------------|----------------|--------|
| A | 14 | 19 S | 25 E | | 330' | NORTH | 660' | EAST | EDDY |

| Dedicated Acres | Joint or Infill | Consolidation Code | Order No. |
|-----------------|-----------------|--------------------|-----------|
| 160 | | | |

NO ALLOWABLE WILL BE ASSIGNED TO THIS COMPLETION UNTIL ALL INTERESTS HAVE BEEN CONSOLIDATED
OR A NON-STANDARD UNIT HAS BEEN APPROVED BY THE DIVISION

| | | |
|--|--|--|
| <p>PROPOSED BOTTOM HOLE LOCATION Lat - N 32°40'00.89" Long - W 104°26'56.90" NMSPCE- N 606373.5 E 505701.4 (NAD-83)</p> <p>PROJECT AREA →</p> <p>PRODUCING ZONE →</p> <p>PENETRATION POINT 330' FSL & 660' FEL →</p> <p>SURFACE LOCATION Lat - N 32°39'11.04" Long - W 104°26'55.38" NMSPCE- N 601335.8 E 505826.2 (NAD-83)</p> | | <p>OPERATOR CERTIFICATION I hereby certify that the information contained herein is true and complete to the best of my knowledge and belief, and that this organization either owns a working interest or unleased mineral interest in the land including the proposed bottom hole location or has a right to drill this well at this location pursuant to a contract with an owner of such a mineral or working interest, or to a voluntary pooling agreement or a compulsory pooling order heretofore entered by the division.</p> <p><i>Cy Cowan</i> Signature 10/30/13 Date</p> <p>Cy Cowan Printed Name</p> <p>cy@yatespetroleum.com Email Address</p> <p>SURVEYOR CERTIFICATION I hereby certify that the well location shown on this plat was plotted from field notes of actual surveys made by me or under my supervision, and that the same is true and correct to the best of my belief.</p> <p>OCTOBER 12 2013 Date Surveyed</p> <p>NEW MEXICO Professional Surveyor 7977 Signature</p> <p>Certificate of Accuracy 7977 Basin Surveyors</p> <p>0' 1000' 2000' 3000' 4000' Scale</p> <p>SCALE: 1" = 2000'</p> <p>WO Num.: 29445</p> |
|--|--|--|

Abundance AVZ #2H



| | | | |
|---|--|------------------|-------------------------------|
| Well Name: Abundance AVZ #2H | | Tgt N-S: 5037.70 | |
| Surface Location: Section 23 , Township 19S Range 25E | | Tgt E-W: -124.80 | EOC TVD/MD: 2697.62 / 2972.53 |
| Bottom Hole Location: Section 14 , Township 19S Range 25E | | VS: 5039.25 | |
| | | VS Az: 358.58 | EOL TVD/MD: 2675.00 / 7531.94 |

| MD | Inc. | Azi. | TVD | +N-S | +E-W | VS | DLS | Comments |
|---------|-------|--------|---------|---------|---------|---------|-------|-------------|
| 0 | 0 | 0 | 0 | 0 | 0 | 0 | 0 | |
| 600.00 | 0.00 | 0.00 | 600.00 | 0.00 | 0.00 | 0.00 | 0.00 | GRAYBURG |
| 920.00 | 0.00 | 0.00 | 920.00 | 0.00 | 0.00 | 0.00 | 0.00 | SAN ANDRES |
| 2220.16 | 0.00 | 0.00 | 2220.16 | 0.00 | 0.00 | 0.00 | 0.00 | KOP |
| 2225.00 | 0.58 | 358.58 | 2225.00 | 0.02 | 0.00 | 0.02 | 12.00 | |
| 2250.00 | 3.58 | 358.58 | 2249.98 | 0.93 | -0.02 | 0.93 | 12.00 | |
| 2275.00 | 6.58 | 358.58 | 2274.88 | 3.14 | -0.08 | 3.15 | 12.00 | |
| 2300.00 | 9.58 | 358.58 | 2299.63 | 6.66 | -0.16 | 6.66 | 12.00 | |
| 2325.00 | 12.58 | 358.58 | 2324.16 | 11.46 | -0.28 | 11.46 | 12.00 | |
| 2350.00 | 15.58 | 358.58 | 2348.41 | 17.54 | -0.43 | 17.55 | 12.00 | |
| 2375.00 | 18.58 | 358.58 | 2372.30 | 24.88 | -0.62 | 24.89 | 12.00 | |
| 2400.00 | 21.58 | 358.58 | 2395.78 | 33.46 | -0.83 | 33.47 | 12.00 | |
| 2425.00 | 24.58 | 358.58 | 2418.77 | 43.26 | -1.07 | 43.27 | 12.00 | |
| 2450.00 | 27.58 | 358.58 | 2441.23 | 54.24 | -1.34 | 54.26 | 12.00 | |
| 2475.00 | 30.58 | 358.58 | 2463.07 | 66.39 | -1.64 | 66.41 | 12.00 | |
| 2477.24 | 30.85 | 358.58 | 2465.00 | 67.53 | -1.67 | 67.55 | 12.00 | GLORIETA |
| 2500.00 | 33.58 | 358.58 | 2484.25 | 79.66 | -1.97 | 79.69 | 12.00 | |
| 2525.00 | 36.58 | 358.58 | 2504.71 | 94.02 | -2.33 | 94.05 | 12.00 | |
| 2550.00 | 39.58 | 358.58 | 2524.38 | 109.44 | -2.71 | 109.47 | 12.00 | |
| 2575.00 | 42.58 | 358.58 | 2543.23 | 125.86 | -3.12 | 125.90 | 12.00 | |
| 2600.00 | 45.58 | 358.58 | 2561.18 | 143.24 | -3.55 | 143.29 | 12.00 | |
| 2625.00 | 48.58 | 358.58 | 2578.21 | 161.54 | -4.00 | 161.59 | 12.00 | |
| 2650.00 | 51.58 | 358.58 | 2594.25 | 180.71 | -4.48 | 180.76 | 12.00 | |
| 2675.00 | 54.58 | 358.58 | 2609.26 | 200.69 | -4.97 | 200.75 | 12.00 | |
| 2694.05 | 56.86 | 358.58 | 2620.00 | 216.41 | -5.36 | 216.47 | 12.00 | YESO |
| 2700.00 | 57.58 | 358.58 | 2623.21 | 221.42 | -5.49 | 221.49 | 12.00 | |
| 2725.00 | 60.58 | 358.58 | 2636.06 | 242.86 | -6.02 | 242.94 | 12.00 | |
| 2750.00 | 63.58 | 358.58 | 2647.76 | 264.94 | -6.56 | 265.02 | 12.00 | |
| 2775.00 | 66.58 | 358.58 | 2658.29 | 287.61 | -7.12 | 287.69 | 12.00 | |
| 2800.00 | 69.58 | 358.58 | 2667.62 | 310.79 | -7.70 | 310.88 | 12.00 | |
| 2825.00 | 72.58 | 358.58 | 2675.73 | 334.43 | -8.28 | 334.53 | 12.00 | |
| 2850.00 | 75.58 | 358.58 | 2682.58 | 358.46 | -8.88 | 358.57 | 12.00 | |
| 2875.00 | 78.58 | 358.58 | 2688.17 | 382.82 | -9.48 | 382.93 | 12.00 | |
| 2900.00 | 81.58 | 358.58 | 2692.48 | 407.43 | -10.09 | 407.56 | 12.00 | |
| 2925.00 | 84.58 | 358.58 | 2695.49 | 432.24 | -10.71 | 432.37 | 12.00 | |
| 2950.00 | 87.58 | 358.58 | 2697.20 | 457.17 | -11.33 | 457.31 | 12.00 | |
| 2972.53 | 90.28 | 358.58 | 2697.62 | 479.69 | -11.88 | 479.83 | 12.00 | YESO TARGET |
| 7531.94 | 90.28 | 358.58 | 2675.00 | 5037.70 | -124.80 | 5039.25 | 0.00 | EOL |

**Yates Petroleum Corporation
105 S. Fourth Street
Artesia, NM 88210**

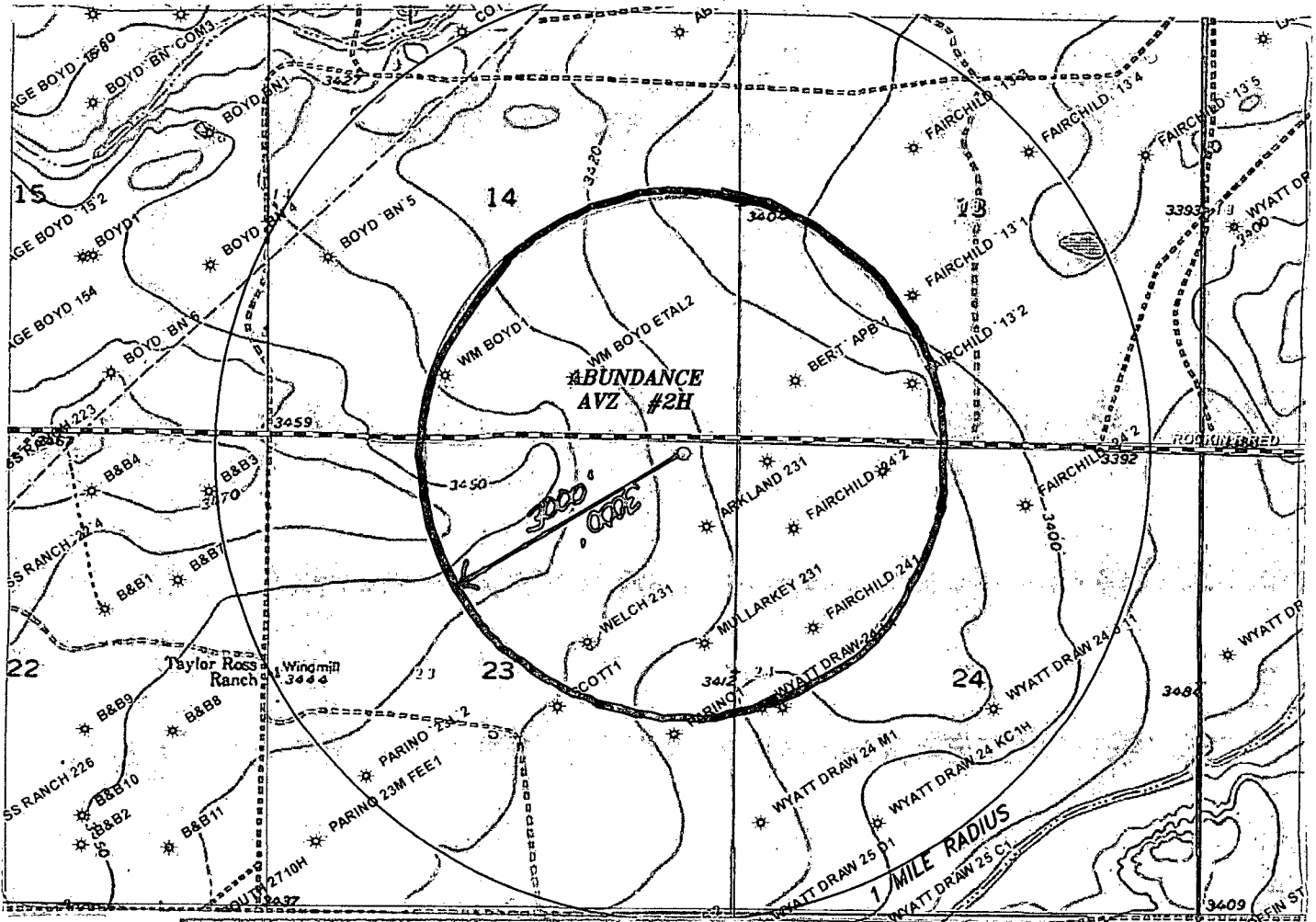
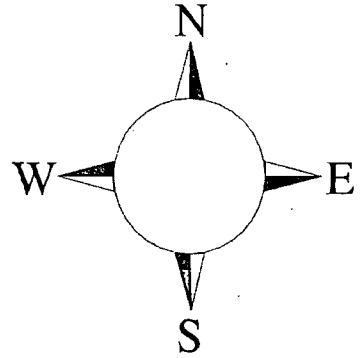
Hydrogen Sulfide (H₂S) Contingency Plan

For

**Abundance AVZ #2-H
250' FNL and 660' FEL Surface Hole Location
Section 23-T19S-R25E
330' FNL and 660' FEL Bottom Hole Location
Section 14, T-19S, R-25E
Eddy County NM**

Abundance AVZ #2-H

This is an open drilling site. H₂S monitoring equipment and emergency response equipment will be used within 500' of zones known to contain H₂S, including warning signs, wind indicators and H₂S monitor.



Assumed 100 ppm ROE = 3000'

100 ppm H₂S concentration shall trigger activation of this plan.

Emergency Procedures

In the case of a release of gas containing H₂S, the first responder(s) must isolate the area and prevent entry by other persons into the 100 ppm ROE. Additionally the first responder(s) must evacuate any public places encompassed by the 100 ppm ROE. First responder(s) must take care not to injure themselves during this operation. Company and/or local officials must be contacted to aid in this operation. Evacuation of the public should be beyond the 100 ppm ROE.

All responders must have training in the detection of H₂S, measures for protection against the gas, equipment used for protection and emergency response. Additionally, responders must be equipped with H₂S monitors and air packs in order to control the release. Use the "buddy system" to ensure no injuries during the response.

Ignition of Gas Source

Should control of the well be considered lost and ignition considered, take care to protect against exposure to Sulfur Dioxide (SO₂). Intentional ignition must be coordinated with the NMOCD and local officials. Additionally the NM State Police may become involved. NM State Police shall be the Incident Command on scene of any major release. Take care to protect downwind whenever there is an ignition of the gas

Characteristics of H₂S and SO₂

| Common Name | Chemical Formula | Specific Gravity | Threshold Limit | Hazardous Limit | Lethal Concentration |
|------------------|------------------|------------------|-----------------|-----------------|----------------------|
| Hydrogen Sulfide | H ₂ S | 1.189 Air = 1 | 10 ppm | 100 ppm/hr | 600 ppm |
| Sulfur Dioxide | SO ₂ | 2.21 Air = 1 | 2 ppm | N/A | 1000 ppm |

Contacting Authorities

YPC personnel must liaison with local and state agencies to ensure a proper response to a major release. Additionally, the OCD must be notified of the release as soon as possible but no later than 4 hours. Agencies will ask for information such as type and volume of release, wind direction, location of release, etc. Be prepared with all information available. The following call list of essential and potential responders has been prepared

for use during a release. YPC Company response must be in coordination with the State of New Mexico's 'Hazardous Materials Emergency Response Plan' (HMER)

Yates Petroleum Corporation Phone Numbers

| | |
|--|----------------|
| YPC Office | (575) 748-1471 |
| Jim Brown/Operations Manager | (575) 748-4524 |
| LeeRoy Richards/Prod Superintendent | (575) 748-4228 |
| Joe Chavez/Assistant Prod Superintendent | (575) 748-4212 |
| Bruce Noles/Drilling | (575) 748-4224 |
| Paul Hanes/Prod. Foreman/Roswell | (575) 624-2805 |
| Tim Bussell/Drilling Superintendent | (575) 748-4221 |
| Artesia Answering Service | (575) 748-4302 |
| (During non-office hours) | |

Agency Call List

Eddy County (575)

Artesia

| | |
|---|----------|
| State Police | 746-2703 |
| City Police | 746-2703 |
| Sheriff's Office | 746-9888 |
| Ambulance | 911 |
| Fire Department | 746-2701 |
| LEPC (Local Emergency Planning Committee) | 746-2122 |
| NMOCD | 748-1283 |

Carlsbad

| | |
|---|----------------|
| State Police | 885-3137 |
| City Police | 885-2111 |
| Sheriff's Office | 887-7551 |
| Ambulance | 911 |
| Fire Department | 885-2111 |
| LEPC (Local Emergency Planning Committee) | 887-3798 |
| US Bureau of Land Management | 887-6544 |
| New Mexico Emergency Response Commission (Santa Fe) | (505) 476-9600 |
| 24 HR | (505) 827-9126 |
| New Mexico State Emergency Operations Center | (505) 476-9635 |
| National Emergency Response Center (Washington, DC) | (800) 424-8802 |

Other

Boots & Coots IWC1-800-256-9688 or (281) 931-8884
Cudd Pressure Control.....(915) 699-0139 or (915) 563-3356
Halliburton(575) 746-2757
B. J. Services.....(575) 746-3569

Flight For Life -4000 24th St, Lubbock, TX(806) 743-9911
Aerocare -Rr 3 Box 49f, Lubbock, TX(806) 747-8923
Med Flight Air Amb 2301 Yale Blvd SE #D3, Albuq, NM(505) 842-4433
S B Air Med Svc 2505 Clark Carr Loop SE, Albuq, NM(505) 842-4949