

District I
1625 N. French Dr., Hobbs, NM 88240
Phone: (575) 393-6161 Fax: (575) 393-0720
District II
511 S. First St., Artesia, NM 88210
Phone: (575) 748-1283 Fax: (575) 748-9720
District III
1000 Rio Brazos Road, Aztec, NM 87410
Phone: (505) 334-6178 Fax: (505) 334-6170
District IV
1220 S. St. Francis Dr., Santa Fe, NM 87505
Phone: (505) 476-3460 Fax: (505) 476-3462

State of New Mexico
Energy, Minerals & Natural Resources Department
OIL CONSERVATION DIVISION
1220 South St. Francis Dr.
Santa Fe, NM 87505

RECEIVED

NOV 26 2013

Form C-102

Revised August 1, 2011

Submit one copy to appropriate

District Office

☐ AMENDED REPORT

WELL LOCATION AND ACREAGE DEDICATION PLAT

¹ API Number 30-015-41828	² Pool Code 96437	³ Well Name WC-015 G-04 SR232615-D; B.S. <small>Happy Valley, Bone Spring</small>
⁴ Property Code 40253	⁵ Property Name 98056 BOSS HOGG 15 STATE COM	⁶ Well Number 1H
⁷ OGRID No. 6137	⁸ Operator Name DEVON ENERGY PRODUCTION COMPANY, L.P.	⁹ Elevation 3327.3

¹⁰ Surface Location

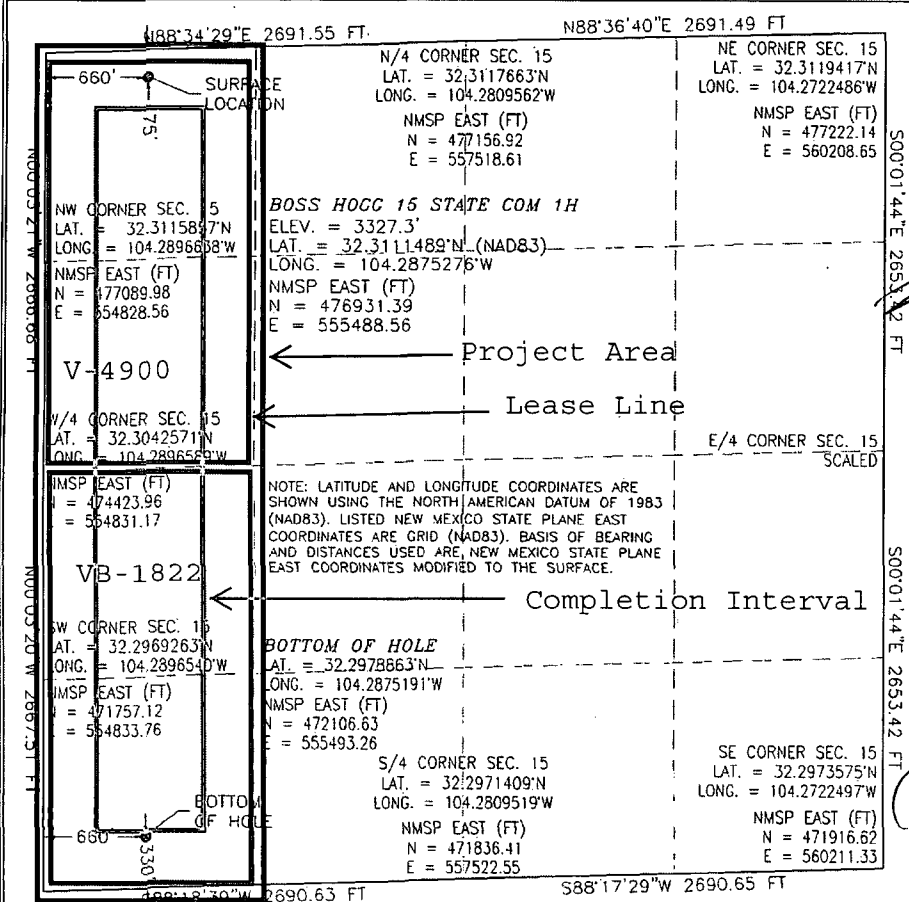
UL or lot no.	Section	Township	Range	Lot Idn	Feet from the	North/South line	Feet from the	East/West line	County
D	15	23 S	26 E		175	NORTH	660	WEST	EDDY

¹¹ Bottom Hole Location If Different From Surface

UL or lot no.	Section	Township	Range	Lot Idn	Feet from the	North/South line	Feet from the	East/West line	County
M	15	23 S	26 E		330	SOUTH	660	WEST	EDDY

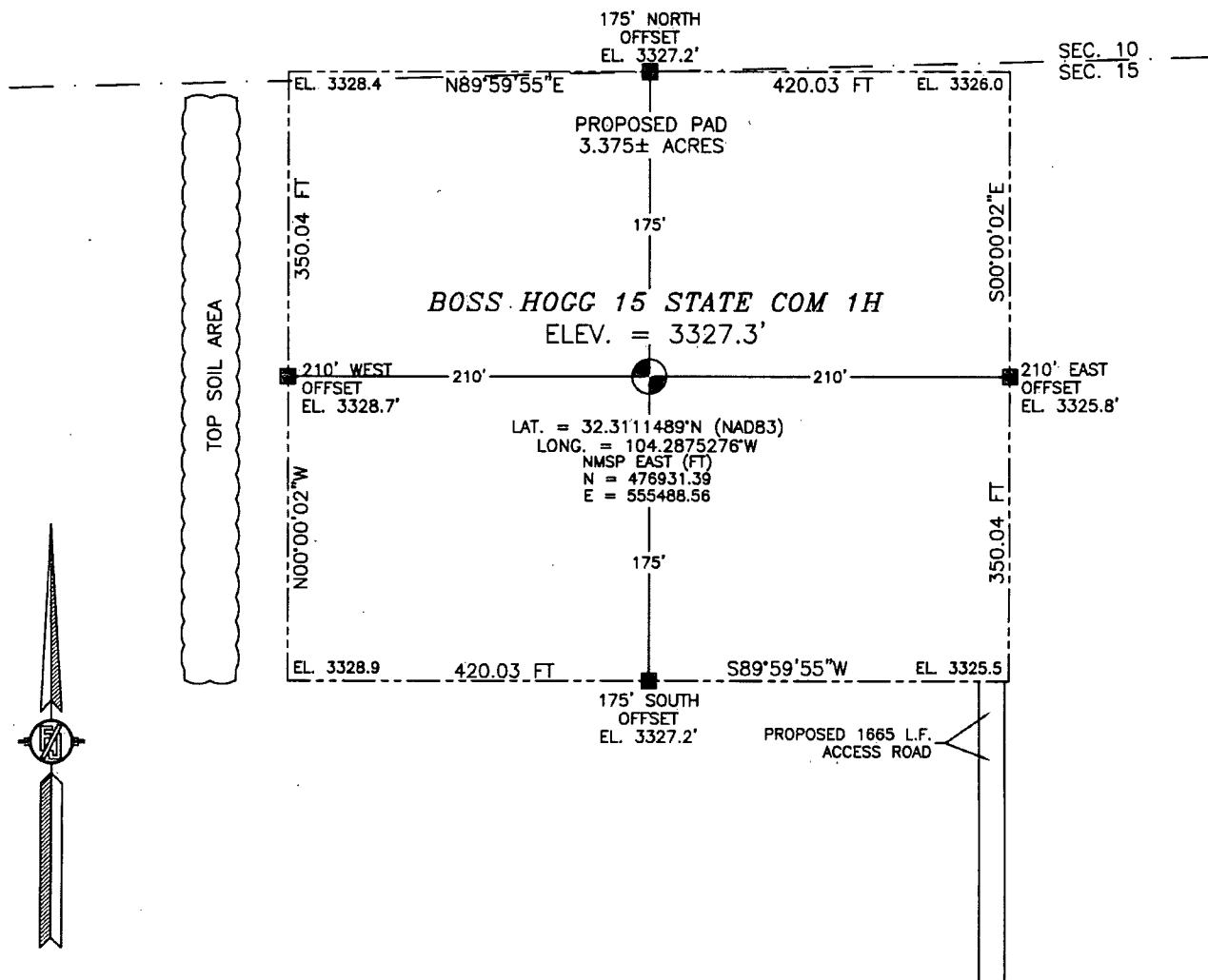
¹² Dedicated Acres 160.00	¹³ Joint or Infill	¹⁴ Consolidation Code	¹⁵ Order No.
--	-------------------------------	----------------------------------	-------------------------

No allowable will be assigned to this completion until all interests have been consolidated or a non-standard unit has been approved by the division.

		<p>¹⁷ OPERATOR CERTIFICATION</p> <p>I hereby certify that the information contained herein is true and complete to the best of my knowledge and belief, and that this organization either owns a working interest or unleased mineral interest in the land including the proposed bottom hole location or has a right to drill this well at this location pursuant to a contract with an owner of such a mineral or working interest, or to a voluntary pooling agreement or a compulsory pooling order heretofore entered by the division.</p> <p><i>[Signature]</i> 11-25-13 Signature Date</p> <p>Ryan DeLong - Regulatory Coordinator Printed Name</p> <p>ryan.delong@dvn.com E-mail Address</p> <p>¹⁸ SURVEYOR CERTIFICATION</p> <p>I hereby certify that the well location shown on this plat was plotted from field notes of actual surveys made by me or under my supervision, and that the same is true and correct to the best of my belief.</p> <p>OCTOBER 17, 2013 Date of Survey</p> <p><i>[Signature]</i> Signature and Seal of Professional Surveyor</p> <p>Certificate Number: ELIMON F. JARAMILLO, PLS 12797 REGISTERED LAND SURVEYOR NO. 2313A</p>
--	--	--

SECTION 15, TOWNSHIP 23 SOUTH, RANGE 26 EAST, N.M.P.M.
EDDY COUNTY, STATE OF NEW MEXICO
SITE MAP

NOTE: LATITUDE AND LONGITUDE COORDINATES ARE SHOWN USING THE NORTH AMERICAN DATUM OF 1983 (NAD83). LISTED NEW MEXICO STATE PLANE EAST COORDINATES ARE GRID (NAD83). BASIS OF BEARING AND DISTANCES USED ARE NEW MEXICO STATE PLANE EAST COORDINATES MODIFIED TO THE SURFACE.



010 50 100 200

SCALE 1" = 100'

DIRECTIONS TO LOCATION

INTERSECTION OF HWY 62-180 AND CALICHE ROAD LYING 250 FT NORTH OF MILE MARKER 27 ON SOUTH BOUND GO WEST ON CALICHE LEASE ROAD 0.92 MILES PROPOSED ROAD ON RIGHT FOLLOW FLAGS NORTH 1665 FT TO SOUTHEAST CORNER OF PAD

DEVON ENERGY PRODUCTION COMPANY, L.P.
BOSS HOGG 15 STATE COM 1H
LOCATED 175 FT. FROM THE NORTH LINE
AND 660 FT. FROM THE WEST LINE OF
SECTION 15, TOWNSHIP 23 SOUTH,
RANGE 26 EAST, N.M.P.M.
EDDY COUNTY, STATE OF NEW MEXICO

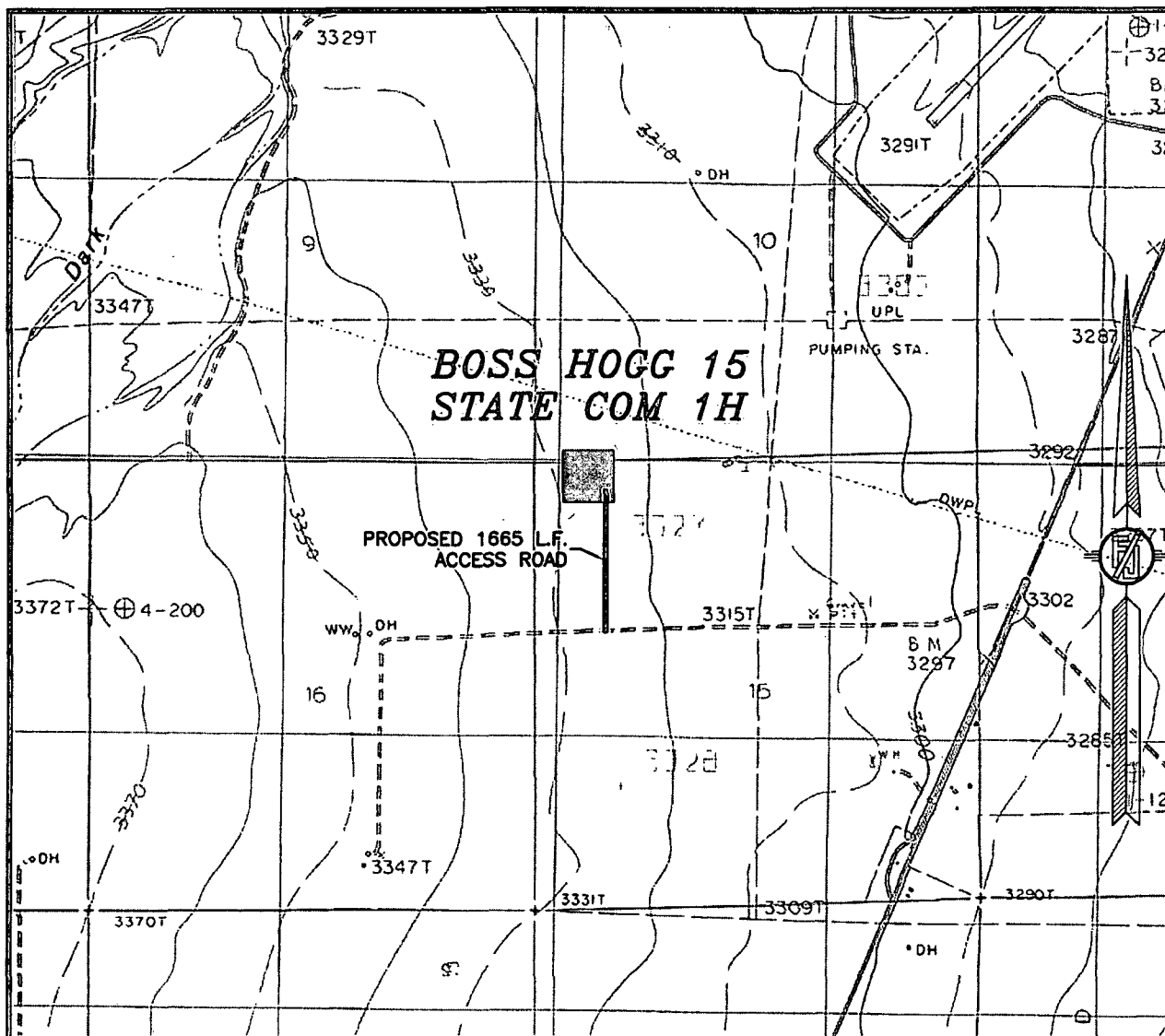
OCTOBER 17, 2013

SURVEY NO. 2313A

MADRON SURVEYING, INC. 301 SOUTH CANAL (575) 234-3341

CARLSBAD, NEW MEXICO

SECTION 15, TOWNSHIP 23 SOUTH, RANGE 26 EAST, N.M.P.M.
 EDDY COUNTY, STATE OF NEW MEXICO
 LOCATION VERIFICATION MAP



USGS QUAD MAP:
 KITCHEN COVE

NOT TO SCALE

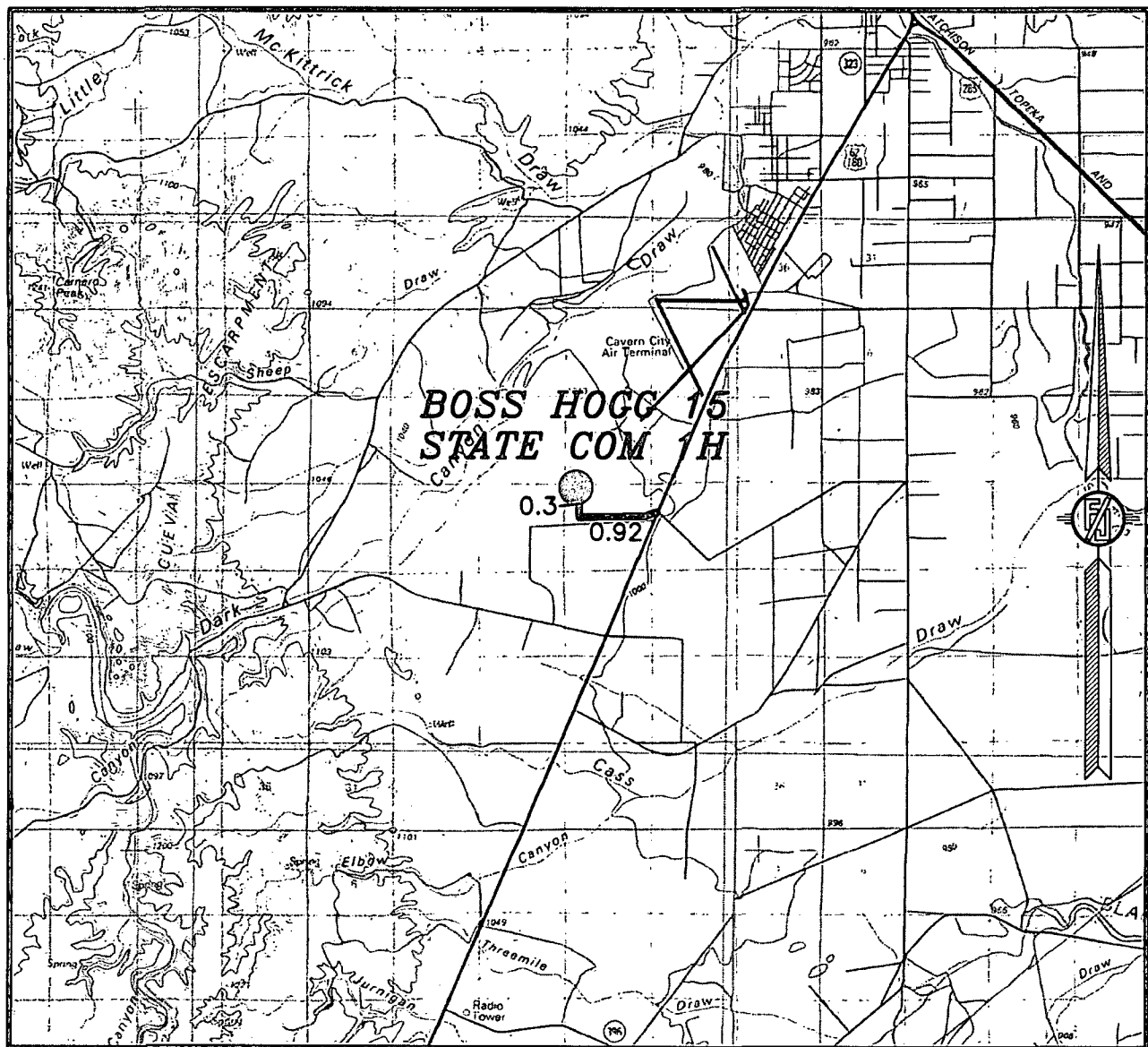
DEVON ENERGY PRODUCTION COMPANY, L.P.
 BOSS HOGG 15 STATE COM 1H
 LOCATED 175 FT. FROM THE NORTH LINE
 AND 660 FT. FROM THE WEST LINE OF
 SECTION 15, TOWNSHIP 23 SOUTH,
 RANGE 26 EAST, N.M.P.M.
 EDDY COUNTY, STATE OF NEW MEXICO

OCTOBER 17, 2013

SURVEY NO. 2313A

MADRON SURVEYING, INC. 301 SOUTH CANAL (575) 234-3341 CARLSBAD, NEW MEXICO

SECTION 15, TOWNSHIP 23 SOUTH, RANGE 26 EAST, N.M.P.M.
EDDY COUNTY, STATE OF NEW MEXICO
VICINITY MAP



DISTANCES IN MILES

NOT TO SCALE

DIRECTIONS TO LOCATION

INTERSECTION OF HWY 62-180 AND CALICHE ROAD LYING 250 FT
NORTH OF MILE MARKER 27 ON SOUTH BOUND GO WEST ON CALICHE
LEASE ROAD 0.92 MILES PROPOSED ROAD ON RIGHT FOLLOW FLAGS
NORTH 1665 FT TO SOUTHEAST CORNER OF PAD

DEVON ENERGY PRODUCTION COMPANY, L.P.

BOSS HOGG 15 STATE COM 1H

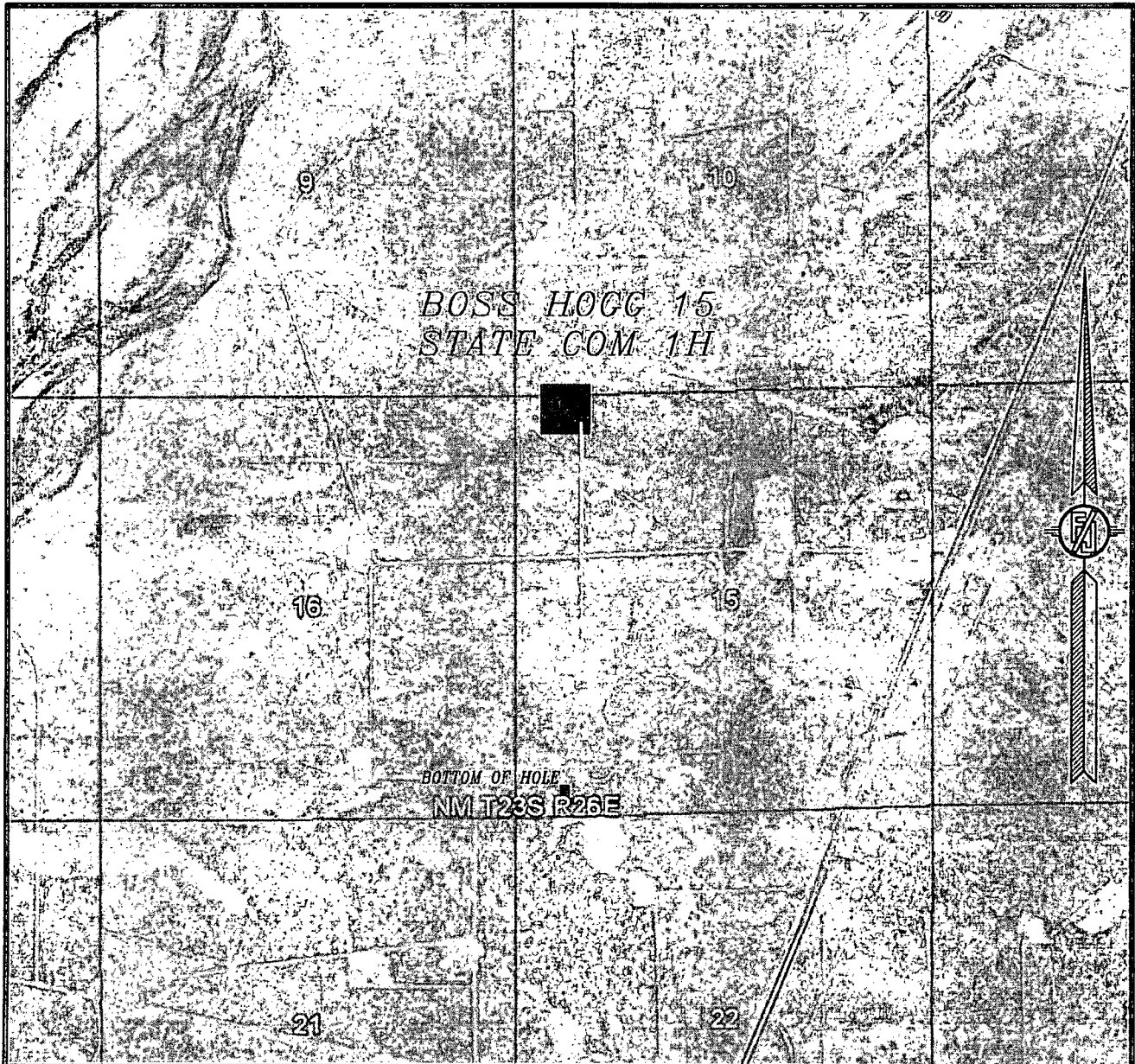
LOCATED 175 FT. FROM THE NORTH LINE
AND 660 FT. FROM THE WEST LINE OF
SECTION 15, TOWNSHIP 23 SOUTH,
RANGE 26 EAST, N.M.P.M.
EDDY COUNTY, STATE OF NEW MEXICO

OCTOBER 17, 2013

SURVEY NO. 2313A

MADRON SURVEYING, INC. 301 SOUTH CANAL (575) 234-3341 CARLSBAD, NEW MEXICO

SECTION 15, TOWNSHIP 23 SOUTH, RANGE 26 EAST, N.M.P.M.
EDDY COUNTY, STATE OF NEW MEXICO
AERIAL PHOTO



NOT TO SCALE
AERIAL PHOTO:
GOOGLE EARTH
APRIL 2013

DEVON ENERGY PRODUCTION COMPANY, L.P.
BOSS HOGG 15 STATE COM 1H
LOCATED 175 FT. FROM THE NORTH LINE
AND 660 FT. FROM THE WEST LINE OF
SECTION 15, TOWNSHIP 23 SOUTH,
RANGE 26 EAST, N.M.P.M.
EDDY COUNTY, STATE OF NEW MEXICO

OCTOBER 17, 2013

SURVEY NO. 2313A

MADRON SURVEYING, INC. 301 SOUTH CANAL (575) 234-3341 CARLSBAD, NEW MEXICO