

District I
1625 N. French Dr., Hobbs, NM 88240
Phone: (575) 393-6161 Fax: (575) 393-0720

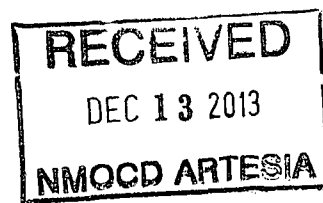
District II
811 S. First St., Artesia, NM 88210
Phone: (575) 748-1283 Fax: (575) 748-9720

District III
1000 Rio Brazos Road, Aztec, NM 87410
Phone: (505) 334-6178 Fax: (505) 334-6170

District IV
1220 S. St. Francis Dr., Santa Fe, NM 87505
Phone: (505) 476-3460 Fax: (505) 476-3462

State of New Mexico
Energy Minerals and Natural Resources
Oil Conservation Division
1220 South St. Francis Dr.
Santa Fe, NM 87505

Form C-101
Revised July 18, 2013



APPLICATION FOR PERMIT TO DRILL, RE-ENTER, DEEPEN, PLUGBACK, OR ADD A ZONE

¹ Operator Name and Address COG Operating LLC 2208 West Main Street Artesia, NM 88210		² OGRID Number 229137
³ Property Code 38519		⁴ Property Name Daisy 24 Fee Com
⁵ API Number 30-015-41862		⁶ Well No 6H

7. Surface Location

UL - Lot	Section	Township	Range	Lot Idn	Feet from	N/S Line	Feet From	E/W Line	County
B	24	25S	27E	B	915	North	1625	East	Eddy

8. Proposed Bottom Hole Location

UL - Lot	Section	Township	Range	Lot Idn	Feet from	N/S Line	Feet From	E/W Line	County
O	25	25S	27E	O	330	South	1980	East	Eddy

9. Pool Information

⁹ Pool Name Hay Hollow: Bone Spring, North	⁹ Pool Code 30216
--	---------------------------------

Additional Well Information

¹¹ Work Type New Well	¹² Well Type Oil	¹³ Cable/Rotary	¹⁴ Lease Type State	¹⁵ Ground Level Elevation 3070.9'
¹⁶ Multiple N	¹⁷ Proposed Depth 17010	¹⁸ Formation Bone Spring	¹⁹ Contractor	²⁰ Spud Date 12/20/2013
Depth to Ground water		Distance from nearest fresh water well		Distance to nearest surface water

☒ We will be using a closed-loop system in lieu of lined pits

21. Proposed Casing and Cement Program

Type	Hole Size	Casing Size	Casing Weight/ft	Setting Depth	Sacks of Cement	Estimated TOC
Surface	17.5	13.375	48	400	325	
Intrmd	12.25	9.625	36	2306	625	
Production	7.875	5.5	17	17010	2375	1806

Casing/Cement Program: Additional Comments

Plan to drill a 17-1/2" hole to 400' with Fresh Water. Run 13-3/8", 48#, H-40 csg and cmt to surface. Drill 12-1/4" hole to 2,306' with Brine, and run 9-5/8", 36#, J-55 csg and cement to surface. Drill 7-7/8" pilot hole to 9,350'. Plug back pilot hole with cmt. Drill 7-7/8" curve and lateral with cut brine to approx 17,010'MD. Run 5-1/2", 17#, P-110 csg and cement to 1,806' in 1 stage.

22. Proposed Blowout Prevention Program

Type	Working Pressure	Test Pressure	Manufacturer
Double Ram	3000	3000	Cameron

²³ I hereby certify that the information given above is true and complete to the best of my knowledge and belief. I further certify that I have complied with 19.15.14.9 (A) NMAC <input checked="" type="checkbox"/> and/or 19.15.14.9 (B) NMAC <input checked="" type="checkbox"/> , if applicable. Signature: <i>Mayte Reyes</i>	OIL CONSERVATION DIVISION Approved By: <i>T. C. Shepard</i> Title: "Geologist" Approved Date: <i>12/13/2013</i> Expiration Date: <i>12/13/2015</i>
Printed name: Mayte Reyes	
Title: Regulatory Analyst	
E-mail Address: mreyes1@concho.com	
Date: 12/13/2013	Phone: 575-748-6945
Conditions of Approval Attached	

DISTRICT I
1625 N. FRENCH DR., HOBBS, NM 88240
Phone: (575) 393-6161 Fax: (575) 393-0720

DISTRICT II
1301 W. GRAND AVENUE, ARTESIA, NM 88210
Phone: (575) 748-1283 Fax: (575) 748-0720

DISTRICT III
1000 RIO BRAZOS RD., AZTEC, NM 87410
Phone: (505) 334-6178 Fax: (505) 334-6170

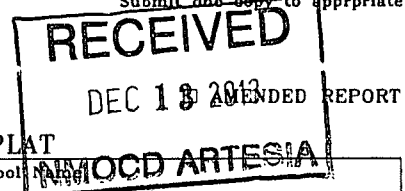
DISTRICT IV
11885 S. ST. FRANCIS DR., SANTA FE, NM 87505
Phone: (505) 476-3480 Fax: (505) 476-3462

State of New Mexico
Energy, Minerals & Natural Resources Department
OIL CONSERVATION DIVISION
11885 SOUTH ST. FRANCIS DR.
Santa Fe, New Mexico 87505

Form C-102

Revised August 1, 2011

Submit one copy to appropriate



WELL LOCATION AND ACREAGE DEDICATION PLAT

API Number 30-015- 41862	Pool Code 30216	Pool Name Hay Hollow; Bone Spring, North
Property Code 38519	Property Name DAISY 24 FEE COM	Well Number 6H
GRID No. 229137	Operator Name COG OPERATING, LLC	Elevation 3070.9

Surface Location

UL or lot No.	Section	Township	Range	Lot Idn	Feet from the	North/South line	Feet from the	East/West line	County
B	24	25-S	27-E		915	NORTH	1625	EAST	EDDY

Bottom Hole Location If Different From Surface

UL or lot No.	Section	Township	Range	Lot Idn	Feet from the	North/South line	Feet from the	East/West line	County
O	25	25-S	27-E		330	SOUTH	1980	EAST	EDDY

Dedicated Acres 320	Joint or Infill	Consolidation Code	Order No.
------------------------	-----------------	--------------------	-----------

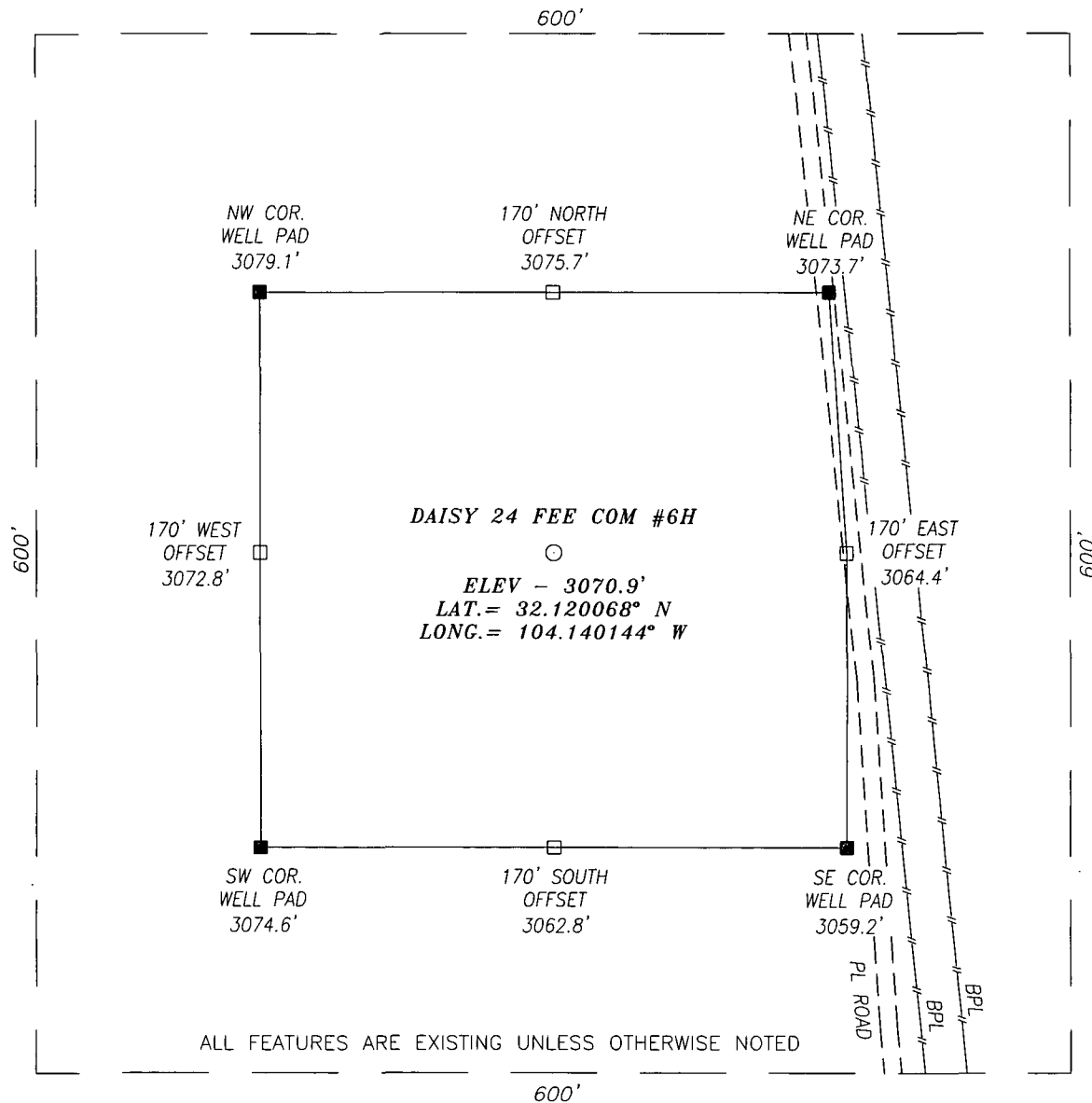
NO ALLOWABLE WILL BE ASSIGNED TO THIS COMPLETION UNTIL ALL INTERESTS HAVE BEEN CONSOLIDATED
OR A NON-STANDARD UNIT HAS BEEN APPROVED BY THE DIVISION

<p>NAD 27 <u>SURFACE LOCATION</u> Y=407456.9 N X=559809.5 E LAT.=32.120068° N LONG.=104.140144° W</p>	<p>Y=407039.2 N X=558802.8 E</p> <p>Y=407048.5 N X=560119.8 E</p> <p>915'</p> <p>S.L.</p> <p>1625'</p> <p>SECTION 24</p> <p>SECTION 25</p> <p>GRID AZ. = 181°50'44"</p> <p>HORZ. DIST. = 9,374.0'</p> <p>NAD 27 <u>PROPOSED BOTTOM HOLE LOCATION</u> Y=398087.8 N X=559507.6 E LAT.=32.094313° N LONG.=104.141173° W</p> <p>Y=397755.5 N X=558892.6 E</p> <p>Y=397760.3 N X=560190.5 E</p> <p>B.H.</p> <p>1980'</p> <p>330'</p>	<p>OPERATOR CERTIFICATION</p> <p>I hereby certify that the information herein is true and complete to the best of my knowledge and belief, and that this organization either owns a working interest or unleased mineral interest in the land including the proposed bottom hole location or has a right to drill this well at this location pursuant to a contract with an owner of such mineral or working interest, or to a voluntary pooling agreement or a compulsory pooling order heretofore entered by the division.</p> <p><i>Maite Reyes</i> 12-13-13 Signature Date MAITE REYES Printed Name mreyes1@concho.com E-mail Address</p> <p>SURVEYOR CERTIFICATION</p> <p>I hereby certify that the well location shown on this plat was plotted from field notes of actual surveys made by me or under my supervision, and that the same is true and correct to the best of my belief.</p> <p>JULY 24, 2013 Date of Survey</p> <p>Signature & Seal of Professional Surveyor</p> <p> Chad L. HARCROW NEW MEXICO 17777 LICENSED PROFESSIONAL SURVEYOR Chad L. HARCROW 8/1/13 Certificate No. CHAD HARCROW 17777 W.O. # 13-496 DRAWN BY: VD</p>
---	---	--

SECTION 24, TOWNSHIP 25 SOUTH, RANGE 27 EAST, N.M.P.M.,

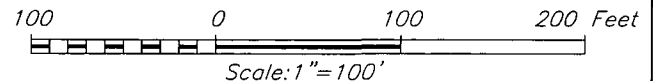
EDDY COUNTY

NEW MEXICO



DIRECTIONS TO LOCATION

HEADING SOUTH ON HWY 285 TURN RIGHT (WEST) APPROX. 0.9 MILE PAST MILE MARKER 10 ONTO CALICHE RD AND GO APPROX. 2.6 MILES; THEN TURN LEFT (SOUTHWEST) AND GO APPROX. 0.5 MILE; THEN TURN RIGHT (NORTHWEST) AND GO APPROX. 0.1 MILE; THEN TURN LEFT (SOUTHWEST) AND GO APPROX. 0.2 MILE; THEN TURN LEFT (SOUTH) AND FOLLOW MEANDERING ROAD FOR APPROX. 0.6 MILE; THEN TURN RIGHT (NORTHWEST) ONTO TWO TRACK ROAD AND GO APPROX. 0.6 MILES; THEN TURN RIGHT (NORTH) AND GO APPROX. 0.5 MILE; THEN PROPOSED WELL IS APPROX. 170 FEET WEST.



HARCROW SURVEYING, LLC

1107 WATSON, ARTESIA, N.M. 88210
PH: (575) 513-2570 FAX: (575) 746-2158
chad_harcrow77@yahoo.com



COG OPERATING, LLC

DAISY 24 FEE COM #6H WELL
LOCATED 915 FEET FROM THE NORTH LINE
AND 1625 FEET FROM THE EAST LINE OF SECTION 24,
TOWNSHIP 25 SOUTH, RANGE 27 EAST, N.M.P.M.,
EDDY COUNTY, NEW MEXICO

SURVEY DATE: 07/26/2013

PAGE: 1 OF 1

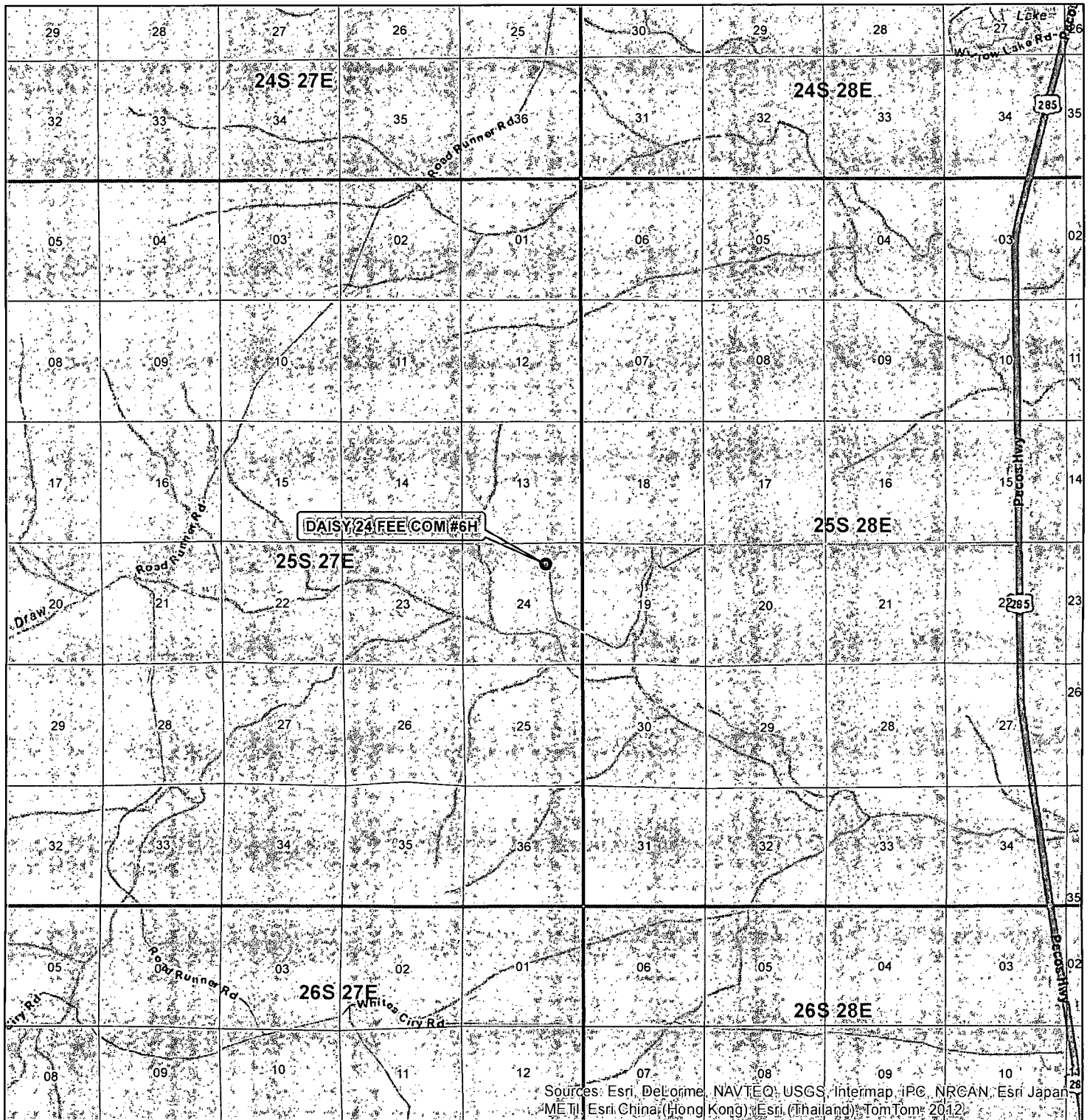
DRAFTING DATE: 07/29/2013

APPROVED BY: CH

DRAWN BY: VD

FILE: 13-496

VICINITY MAP



Sources: Esri, DeLorme, NAVTEQ, USGS, Intermap, iPC, NRCAN, Esri Japan, MEI, Esri China (Hong Kong), Esri (Thailand), TomTom, 2012

SEC. 24, TWP. 25 S, RGE. 27 E
 SURVEY: N.M.P.M.
 COUNTY: EDDY STATE: NEW MEXICO
 DESCRIPTION: DAISY 24 FEE COM #6H

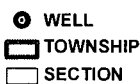
915' FNL & 1625' FEL
 OPERATOR: COG OPERATING LLC

LEASE: DAISY 24 FEE COM
 ELEVATION: 3,070.9'
 W.O. # 13-496



1 IN = 6,000 FT

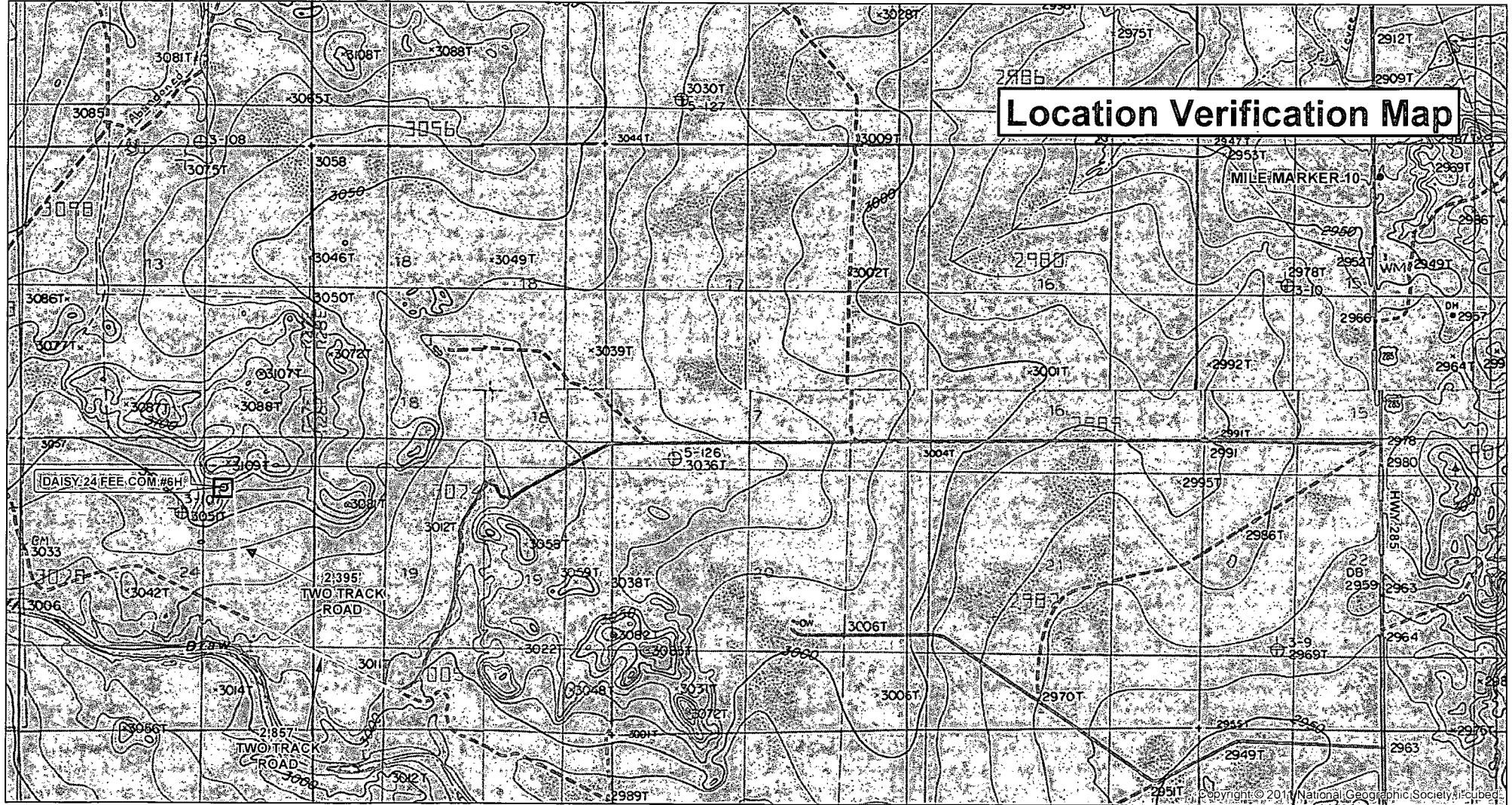
0 0.5 MILES



HARCROW SURVEYING, LLC
 1107 WATSON, ARTESIA N.M. 88210
 PH: (575) 513-2570 FAX: (575) 746-2158
 chad_harcrow77@yahoo.com

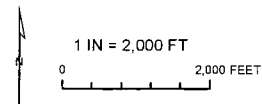


MAP DATE: 7/30/2013



SEC. 24, TWP. 25 S, RGE. 27 E
 SURVEY: N.M.P.M
 COUNTY: EDDY STATE: NEW MEXICO
 DESCRIPTION: DAISY 24 FEE COM #6H

915' FNL & 1625' FEL
 OPERATOR: COG OPERATING LLC
 LEASE: DAISY 24 FEE COM
 ELEVATION: 3,070.9'
 W.O. # 13-496



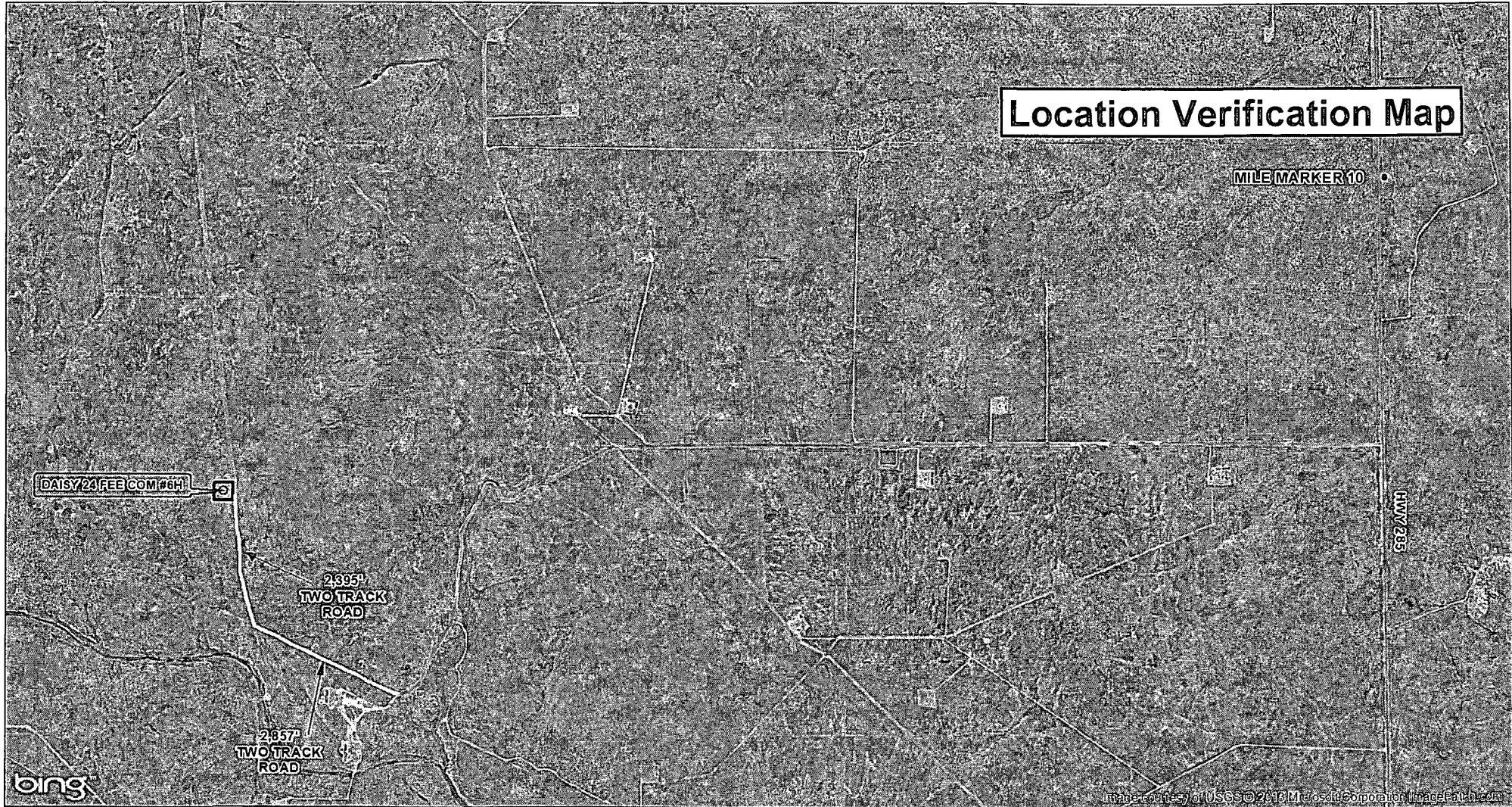
- MAIN ROAD
- PROPOSED ROAD
- TWO TRACK ROAD
- WELL
- WELLPAD

HARCROW SURVEYING, LLC
 1107 WATSON, ARTESIA N.M. 88210
 PH: (575) 513-2570 FAX: (575) 746-2158
 chad_harcrow77@yahoo.com



MAP DATE 7/26/2013

Location Verification Map



SEC. 24, TWP. 25 S, RGE. 27 E
SURVEY: N.M.P.M
COUNTY: EDDY STATE: NEW MEXICO
DESCRIPTION: DAISY 24 FEE COM #6H

915' FNL & 1625' FEL
OPERATOR: COG OPERATING LLC
LEASE: DAISY 24 FEE COM
ELEVATION: 3,070.9'
W.O. # 13-496



1 IN = 2,000 FT
0 2,000 FEET

- MAIN ROAD
- PROPOSED ROAD
- - - TWO TRACK ROAD
- WELL
- WELLPAD

HARCROW SURVEYING, LLC
1107 WATSON, ARTESIA N.M. 88210
PH: (375) 513-2570 FAX: (375) 746-2158
chad_harcrow77@yahoo.com



MAP DATE: 7/20/2013

Daisy 24 Fee Com #6H

	Hole Size	Casing	Wt	Depth	Cmt	TOC
Surface	17.5	13.375	48	400'	325	0
Intrmd	12.25	9.625	36	2,306'	625	0
Prod	7.875	5.5	17	17,010'	2,375	1,806'

Plan to drill a 17-1/2" hole to 400' with Fresh Water. Run 13-3/8", 48#, H-40 csg and cmt to surface. Drill 12-1/4" hole to 2,306' with Brine, and run 9-5/8", 36#, J-55 csg and cement to surface. Drill 7-7/8" pilot hole to 9,350'. Plug back pilot hole with cmt. Drill 7-7/8" curve and lateral with cut brine to approx 17,010'MD. Run 5-1/2", 17#, P-110 csg and cement to 1,806' in 1 stage.

Well Control

Type	Pressure	Test	Manufacture
Double Ram	3000	3000	Cameron

Permit Conditions of Approval

API: 30-015-41862

Daisy 24 See Com #6H

OCD Reviewer	Condition
CSHAPARD	Once the well is spud, to prevent ground water contamination through whole or partial conduits from the surface, the operator shall drill without interruption through the fresh water zone or zones and shall immediately set in cement the water protection string