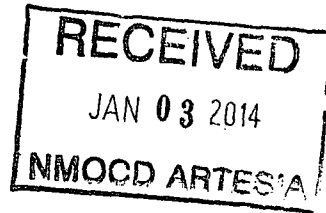


15-41417



# Mewbourne Oil Company .

Eddy County, New Mexico  
Glock 17 MP Federal #1H  
Glock 17 MP Federal #1H

OH

Design: OH

## Standard Survey Report

23 October, 2013





# Stryker Directional Survey Report



<b>Company:</b>	Mewbourne Oil Company	<b>Local Co-ordinate Reference:</b>	Well: Glock 17; MP; Federal #1H
<b>Project:</b>	Eddy County, New Mexico	<b>TVD Reference:</b>	GL 3267 +20 @ 3287.0usft (Patterson 45)
<b>Site:</b>	Glock 17; MP; Federal #1H	<b>MD Reference:</b>	GL 3267 +20 @ 3287.0usft (Patterson 45)
<b>Well:</b>	Glock 17; MP; Federal #1H	<b>North Reference:</b>	Grid
<b>Wellbore:</b>	OH	<b>Survey Calculation Method:</b>	Minimum Curvature
<b>Design:</b>	OH	<b>Database:</b>	EDM 5000.1 Single User Db

<b>Project:</b>	Eddy County, New Mexico		
<b>Map System:</b>	US State Plane 1927 (Exact solution)	<b>System Datum:</b>	Mean Sea Level
<b>Geo Datum:</b>	NAD 1927 (NADCON CONUS)		
<b>Map Zone:</b>	New Mexico East 3001		

<b>Site:</b>	Glock 17; MP; Federal #1H
--------------	---------------------------

<b>Site Position:</b>		<b>Northing:</b>	570,144.41 usft	<b>Latitude:</b>	32° 34' 2.014 N
<b>From:</b>	Map	<b>Easting:</b>	570,447.90 usft	<b>Longitude:</b>	104° 6' 16.774 W
<b>Position Uncertainty:</b>	0.0 usft	<b>Slot Radius:</b>	13-3/16 "	<b>Grid Convergence:</b>	0.12 °

<b>Well:</b>	Glock 17; MP; Federal #1H					
<b>Well Position</b>	<b>+N/-S</b>	0.0 usft	<b>Northing:</b>	570,144.41 usft	<b>Latitude:</b>	32° 34' 2.014 N
	<b>+E/-W</b>	0.0 usft	<b>Easting:</b>	570,447.90 usft	<b>Longitude:</b>	104° 6' 16.774 W
<b>Position Uncertainty</b>		0.0 usft	<b>Wellhead Elevation:</b>	usft	<b>Ground Level:</b>	3,267.0 usft

<b>Wellbore:</b>	OH
------------------	----

Magnetics	Model Name	Sample Date	Declination (°)	Dip Angle (°)	Field Strength (nT)
	IGRF2010	9/20/2013	7.58	60.36	48,539

<b>Design:</b>	OH
----------------	----

<b>Audit Notes:</b>	
<b>Version:</b>	1.0
<b>Phase:</b>	ACTUAL
<b>Tie On Depth:</b>	0.0

Vertical Section:	Depth From (TVD) (usft)	+N/-S (usft)	+E/-W (usft)	Direction (°)
	0.0	0.0	0.0	90.00

Survey Program	Date	From (usft)	To (usft)	Survey (Wellbore)	Tool Name	Description
	10/22/2013	100.0	7,100.0	Gyro Survey #1 (OH)	GyroFlex	
		7,159.0	12,390.0	MWD Survey #2 (OH)	MWD	MWD - Standard

Measured Depth (usft)	Inclination (°)	Azimuth (°)	Vertical Depth (usft)	+N/-S (usft)	+E/-W (usft)	Vertical Section (usft)	Dogleg Rate (°/100usft)	Build Rate (°/100usft)	Turn Rate (°/100usft)
0.0	0.00	0.00	0.0	0.0	0.0	0.0	0.00	0.00	0.00
100.0	0.69	166.67	100.0	-0.6	0.1	0.1	0.69	0.69	0.00
200.0	0.90	190.81	200.0	-1.9	0.1	0.1	0.39	0.21	24.14
300.0	1.42	213.00	300.0	-3.8	-0.7	-0.7	0.68	0.52	22.19
400.0	1.41	203.62	399.9	-5.9	-1.9	-1.9	0.23	-0.01	-9.38
500.0	1.99	213.25	499.9	-8.5	-3.3	-3.3	0.64	0.58	9.63
600.0	1.55	213.38	599.8	-11.1	-5.0	-5.0	0.44	-0.44	0.13
700.0	1.37	172.72	699.8	-13.4	-5.6	-5.6	1.03	-0.18	-40.66
800.0	1.26	116.65	799.8	-15.1	-4.5	-4.5	1.24	-0.11	-56.07
900.0	1.52	124.02	899.8	-16.3	-2.4	-2.4	0.32	0.26	7.37



# Stryker Directional Survey Report



Company:	Mewbourne Oil Company	Local Co-ordinate Reference:	Well: Glock 17 MP Federal #1H
Project:	Eddy County, New Mexico	TVD Reference:	GL 3267 +20 @ 3287.0usft (Patterson 45)
Site:	Glock 17 MP Federal #1H	MD Reference:	GL 3267 +20 @ 3287.0usft (Patterson 45)
Well:	Glock 17 MP Federal #1H	North Reference:	Grid:
Wellbore:	OH	Survey/Calculation Method:	Minimum Curvature
Design:	OH	Database:	EDM 5000.1 (Single User Db)

Survey										
Measured Depth (usft)	Inclination (°)	Azimuth (°)	Vertical Depth (usft)	+N/-S (usft)	+E/-W (usft)	Vertical Section (usft)	Dogleg Rate (°/100usft)	Build Rate (°/100usft)	Turn Rate (°/100usft)	
1,000.0	1.60	107.03	999.7	-17.5	0.1	0.1	0.47	0.08	-16.99	
1,100.0	1.79	115.78	1,099.7	-18.5	2.8	2.8	0.32	0.19	8.75	
1,200.0	1.04	107.77	1,199.7	-19.5	5.1	5.1	0.77	-0.75	-8.01	
1,300.0	0.93	118.53	1,299.6	-20.2	6.6	6.6	0.21	-0.11	10.76	
1,400.0	1.18	126.49	1,399.6	-21.2	8.2	8.2	0.29	0.25	7.96	
1,500.0	1.44	145.49	1,499.6	-22.8	9.7	9.7	0.50	0.26	19.00	
1,600.0	1.13	146.54	1,599.6	-24.7	11.0	11.0	0.31	-0.31	1.05	
1,700.0	1.28	147.68	1,699.5	-26.4	12.1	12.1	0.15	0.15	1.14	
1,800.0	1.06	191.00	1,799.5	-28.3	12.5	12.5	0.89	-0.22	43.32	
1,900.0	0.91	190.89	1,899.5	-30.0	12.2	12.2	0.15	-0.15	-0.11	
2,000.0	1.11	233.23	1,999.5	-31.3	11.3	11.3	0.75	0.20	42.34	
2,100.0	2.20	217.46	2,099.5	-33.4	9.3	9.3	1.17	1.09	-15.77	
2,200.0	3.29	204.89	2,199.3	-37.6	7.0	7.0	1.24	1.09	-12.57	
2,300.0	4.57	196.94	2,299.1	-44.0	4.6	4.6	1.39	1.28	-7.95	
2,400.0	5.29	202.96	2,398.7	-52.0	1.6	1.6	0.89	0.72	6.02	
2,500.0	6.78	210.76	2,498.2	-61.4	-3.2	-3.2	1.70	1.49	7.80	
2,600.0	7.98	212.12	2,597.3	-72.3	-9.9	-9.9	1.21	1.20	1.36	
2,700.0	8.46	212.72	2,696.3	-84.4	-17.5	-17.5	0.49	0.48	0.60	
2,800.0	8.84	215.32	2,795.2	-96.8	-26.0	-26.0	0.55	0.38	2.60	
2,900.0	9.16	218.08	2,894.0	-109.4	-35.3	-35.3	0.54	0.32	2.76	
3,000.0	9.36	219.98	2,992.7	-121.9	-45.5	-45.5	0.37	0.20	1.90	
3,100.0	8.08	220.57	3,091.5	-133.4	-55.2	-55.2	1.28	-1.28	0.59	
3,200.0	6.54	224.89	3,190.7	-142.8	-63.8	-63.8	1.63	-1.54	4.32	
3,300.0	5.24	225.42	3,290.1	-150.1	-71.1	-71.1	1.30	-1.30	0.53	
3,400.0	4.73	227.07	3,389.8	-156.1	-77.4	-77.4	0.53	-0.51	1.65	
3,500.0	4.04	235.47	3,489.5	-160.9	-83.3	-83.3	0.94	-0.69	8.40	
3,600.0	3.12	230.54	3,589.3	-164.6	-88.3	-88.3	0.97	-0.92	-4.93	
3,700.0	2.62	225.59	3,689.2	-167.9	-92.0	-92.0	0.56	-0.50	-4.95	
3,800.0	2.26	225.39	3,789.1	-170.9	-95.1	-95.1	0.36	-0.36	-0.20	
3,900.0	1.96	222.05	3,889.0	-173.6	-97.6	-97.6	0.32	-0.30	-3.34	
4,000.0	1.97	218.00	3,988.9	-176.2	-99.8	-99.8	0.14	0.01	-4.05	
4,100.0	1.71	213.87	4,088.9	-178.8	-101.7	-101.7	0.29	-0.26	-4.13	
4,200.0	1.46	226.83	4,188.8	-180.9	-103.5	-103.5	0.44	-0.25	12.96	
4,300.0	1.35	228.02	4,288.8	-182.6	-105.3	-105.3	0.11	-0.11	1.19	
4,400.0	1.94	212.39	4,388.8	-184.8	-107.1	-107.1	0.74	0.59	-15.63	
4,500.0	2.39	205.76	4,488.7	-188.1	-108.9	-108.9	0.51	0.45	-6.63	
4,600.0	1.86	192.81	4,588.6	-191.5	-110.1	-110.1	0.71	-0.53	-12.95	
4,700.0	1.41	181.38	4,688.6	-194.4	-110.5	-110.5	0.55	-0.45	-11.43	
4,800.0	1.49	186.36	4,788.6	-196.9	-110.7	-110.7	0.15	0.08	4.98	
4,900.0	1.14	149.31	4,888.5	-199.0	-110.3	-110.3	0.90	-0.35	-37.05	
5,000.0	1.53	139.34	4,988.5	-200.9	-109.0	-109.0	0.45	0.39	-9.97	
5,100.0	1.30	128.35	5,088.5	-202.6	-107.2	-107.2	0.35	-0.23	-10.99	
5,200.0	1.22	134.54	5,188.5	-204.1	-105.6	-105.6	0.16	-0.08	6.19	



# Stryker Directional Survey Report



Company: Mewbourne Oil Company	Local Co-ordinate Reference: Well: Glock 17 MP Federal #1H
Project: Eddy County, New Mexico	TVD Reference: GL 3267+ 20 @ 3287.0usft (Patterson:45)
Site: Glock 17 MP Federal #1H	MD Reference: GL 3267+ 20 @ 3287.0usft (Patterson:45)
Well: Glock 17 MP Federal #1H	North Reference: Grid
Wellbore: OH	Survey Calculation Method: Minimum Curvature
Design: OH	Database: EDM5000.1:SingleUser.Db

## Survey

Measured Depth (usft)	Inclination (°)	Azimuth (°)	Vertical Depth (usft)	+N/-S (usft)	+E/-W (usft)	Vertical Section (usft)	Dogleg Rate (°/100usft)	Build Rate (°/100usft)	Turn Rate (°/100usft)
5,300.0	1.02	159.75	5,288.4	-205.6	-104.5	-104.5	0.53	-0.20	25.21
5,400.0	0.91	178.14	5,388.4	-207.3	-104.2	-104.2	0.33	-0.11	18.39
5,500.0	0.88	194.57	5,488.4	-208.8	-104.3	-104.3	0.26	-0.03	16.43
5,600.0	0.74	182.11	5,588.4	-210.2	-104.5	-104.5	0.22	-0.14	-12.46
5,700.0	0.58	213.04	5,688.4	-211.3	-104.8	-104.8	0.38	-0.16	30.93
5,800.0	0.42	247.06	5,788.4	-211.8	-105.5	-105.5	0.33	-0.16	34.02
5,900.0	0.43	244.90	5,888.4	-212.1	-106.1	-106.1	0.02	0.01	-2.16
6,000.0	0.60	126.93	5,988.4	-212.6	-106.1	-106.1	0.89	0.17	-117.97
6,100.0	0.60	157.88	6,088.4	-213.4	-105.4	-105.4	0.32	0.00	30.95
6,200.0	0.22	329.00	6,188.4	-213.7	-105.3	-105.3	0.82	-0.38	171.12
6,300.0	0.22	72.11	6,288.4	-213.5	-105.3	-105.3	0.34	0.00	103.11
6,400.0	0.72	19.85	6,388.4	-212.9	-104.9	-104.9	0.61	0.50	-52.26
6,500.0	0.94	20.97	6,488.4	-211.5	-104.4	-104.4	0.22	0.22	1.12
6,600.0	0.75	13.80	6,588.4	-210.1	-103.9	-103.9	0.22	-0.19	-7.17
6,700.0	0.57	51.31	6,688.4	-209.1	-103.4	-103.4	0.46	-0.18	37.51
6,800.0	1.28	137.33	6,788.3	-209.7	-102.2	-102.2	1.36	0.71	86.02
6,900.0	1.47	142.69	6,888.3	-211.5	-100.7	-100.7	0.23	0.19	5.36
7,000.0	1.29	118.88	6,988.3	-213.1	-98.9	-98.9	0.60	-0.18	-23.81
7,100.0	0.81	137.81	7,088.3	-214.1	-97.5	-97.5	0.59	-0.48	18.93
<b>7100 MD IMS Gyro</b>									
7,159.0	1.00	76.00	7,147.3	-214.3	-96.7	-96.7	1.60	0.32	-104.76
7,190.0	4.80	48.20	7,178.2	-213.4	-95.4	-95.4	12.72	12.26	-89.68
7,222.0	9.40	42.60	7,210.0	-210.6	-92.7	-92.7	14.52	14.38	-17.50
7,254.0	13.80	40.10	7,241.3	-205.7	-88.5	-88.5	13.84	13.75	-7.81
7,286.0	16.80	39.50	7,272.2	-199.2	-83.0	-83.0	9.39	9.38	-1.88
7,317.0	17.70	38.20	7,301.8	-192.1	-77.3	-77.3	3.16	2.90	-4.19
7,349.0	19.70	41.50	7,332.1	-184.2	-70.7	-70.7	7.07	6.25	10.31
7,381.0	23.70	44.50	7,361.8	-175.6	-62.6	-62.6	12.97	12.50	9.38
7,413.0	28.10	46.90	7,390.6	-165.8	-52.6	-52.6	14.13	13.75	7.50
7,444.0	30.20	48.60	7,417.7	-155.7	-41.4	-41.4	7.28	6.77	5.48
7,476.0	32.70	50.30	7,445.0	-144.8	-28.7	-28.7	8.29	7.81	5.31
7,508.0	35.20	53.30	7,471.5	-133.8	-14.7	-14.7	9.40	7.81	9.38
7,540.0	37.70	57.60	7,497.2	-123.0	1.0	1.0	11.17	7.81	13.44
7,572.0	40.50	61.70	7,522.1	-112.9	18.4	18.4	11.91	8.75	12.81
7,603.0	44.20	65.10	7,545.0	-103.6	37.1	37.1	14.03	11.94	10.97
7,635.0	47.80	67.00	7,567.2	-94.2	58.1	58.1	12.03	11.25	5.94
7,667.0	50.00	67.30	7,588.2	-84.9	80.3	80.3	6.91	6.88	0.94
7,699.0	52.50	67.20	7,608.3	-75.2	103.3	103.3	7.82	7.81	-0.31
7,731.0	55.90	67.10	7,627.0	-65.1	127.3	127.3	10.63	10.63	-0.31
7,762.0	58.90	67.30	7,643.7	-55.0	151.3	151.3	9.69	9.68	0.65
7,794.0	61.40	69.30	7,659.6	-44.8	177.1	177.1	9.51	7.81	6.25
7,826.0	64.40	72.00	7,674.2	-35.3	204.0	204.0	12.01	9.38	8.44
7,858.0	68.10	74.40	7,687.1	-26.9	232.0	232.0	13.45	11.56	7.50



# Stryker Directional Survey Report



Company: Mewbourne Oil Company	Local Co-ordinate Reference: Well: Glock 17 MP Federal #1H	Well: Glock 17 MP Federal #1H
Project: Eddy County, New Mexico	TVD Reference: GL-3267+-20@-3287.0usft (Patterson) (45)	Well: Glock 17 MP Federal #1H
Site: Glock 17 MP Federal #1H	MD Reference: GL-3267+-20@-3287.0usft (Patterson) (45)	Wellbore: OH
Well: Glock 17 MP Federal #1H	North Reference: Grid	Design: OH
Wellbore: OH	Survey Calculation Method: Minimum Curvature	
Design: OH	Database: EDM5000.1:Single User Db	

## Survey

Measured Depth (usft)	Inclination (°)	Azimuth (°)	Vertical Depth (usft)	+N/-S (usft)	+E/-W (usft)	Vertical Section (usft)	Dogleg Rate (°/100usft)	Build Rate (°/100usft)	Turn Rate (°/100usft)
7,889.0	71.50	76.00	7,697.8	-19.4	260.1	260.1	11.99	10.97	5.16
7,921.0	74.90	78.30	7,707.0	-12.6	290.0	290.0	12.66	10.63	7.19
7,953.0	77.50	81.30	7,714.7	-7.1	320.6	320.6	12.20	8.13	9.38
7,984.0	79.40	83.40	7,720.9	-3.1	350.7	350.7	9.03	6.13	6.77
8,016.0	81.80	85.10	7,726.1	0.1	382.1	382.1	9.15	7.50	5.31
8,048.0	86.00	87.40	7,729.5	2.1	413.8	413.8	14.94	13.13	7.19
8,080.0	87.90	88.00	7,731.2	3.4	445.8	445.8	6.23	5.94	1.88
8,114.1	88.55	88.27	7,732.3	4.5	479.9	479.9	2.06	1.90	0.79
LP: Glock 17 MP Federal #1H									
8,143.0	89.10	88.50	7,732.9	5.3	508.7	508.7	2.06	1.90	0.79
8,207.0	89.40	88.70	7,733.7	6.9	572.7	572.7	0.56	0.47	0.31
8,270.0	89.50	88.60	7,734.3	8.4	635.7	635.7	0.22	0.16	-0.16
8,334.0	89.50	88.30	7,734.9	10.1	699.6	699.6	0.47	0.00	-0.47
8,397.0	89.70	88.00	7,735.3	12.2	762.6	762.6	0.57	0.32	-0.48
8,461.0	89.60	87.50	7,735.7	14.7	826.6	826.6	0.80	-0.16	-0.78
8,524.0	88.80	88.10	7,736.6	17.1	889.5	889.5	1.59	-1.27	0.95
8,588.0	88.30	88.80	7,738.2	18.8	953.5	953.5	1.34	-0.78	1.09
8,652.0	88.40	88.10	7,740.0	20.5	1,017.4	1,017.4	1.10	0.16	-1.09
8,715.0	88.20	88.90	7,741.9	22.2	1,080.4	1,080.4	1.31	-0.32	1.27
8,779.0	88.30	89.50	7,743.9	23.1	1,144.3	1,144.3	0.95	0.16	0.94
8,842.0	88.60	88.80	7,745.6	24.0	1,207.3	1,207.3	1.21	0.48	-1.11
8,906.0	88.40	89.80	7,747.2	24.8	1,271.3	1,271.3	1.59	-0.31	1.56
8,969.0	88.70	90.10	7,748.8	24.9	1,334.2	1,334.2	0.67	0.48	0.48
9,033.0	88.90	90.30	7,750.2	24.6	1,398.2	1,398.2	0.44	0.31	0.31
9,096.0	89.50	90.40	7,751.0	24.3	1,461.2	1,461.2	0.97	0.95	0.16
9,160.0	89.10	91.30	7,751.8	23.3	1,525.2	1,525.2	1.54	-0.63	1.41
9,223.0	89.30	91.20	7,752.7	21.9	1,588.2	1,588.2	0.35	0.32	-0.16
9,287.0	89.80	90.70	7,753.2	20.9	1,652.2	1,652.2	1.10	0.78	-0.78
9,350.0	88.90	91.00	7,753.9	19.9	1,715.2	1,715.2	1.51	-1.43	0.48
9,414.0	89.10	91.20	7,755.0	18.7	1,779.1	1,779.1	0.44	0.31	0.31
9,478.0	89.30	90.60	7,755.9	17.7	1,843.1	1,843.1	0.99	0.31	-0.94
9,541.0	88.50	90.90	7,757.1	16.9	1,906.1	1,906.1	1.36	-1.27	0.48
9,605.0	88.40	91.00	7,758.9	15.8	1,970.1	1,970.1	0.22	-0.16	0.16
9,668.0	88.70	90.60	7,760.5	14.9	2,033.0	2,033.0	0.79	0.48	-0.63
9,732.0	88.90	90.30	7,761.8	14.4	2,097.0	2,097.0	0.56	0.31	-0.47
9,795.0	88.80	90.90	7,763.1	13.8	2,160.0	2,160.0	0.97	-0.16	0.95
9,859.0	89.10	90.70	7,764.2	12.9	2,224.0	2,224.0	0.56	0.47	-0.31
9,922.0	89.40	90.50	7,765.1	12.2	2,287.0	2,287.0	0.57	0.48	-0.32
9,986.0	89.50	90.30	7,765.7	11.8	2,351.0	2,351.0	0.35	0.16	-0.31
10,049.0	89.00	90.90	7,766.5	11.1	2,414.0	2,414.0	1.24	-0.79	0.95
10,113.0	88.80	91.00	7,767.7	10.1	2,478.0	2,478.0	0.35	-0.31	0.16
10,176.0	89.10	90.70	7,768.9	9.1	2,540.9	2,540.9	0.67	0.48	-0.48
10,240.0	89.50	90.30	7,769.7	8.6	2,604.9	2,604.9	0.88	0.63	-0.63
10,303.0	89.20	89.50	7,770.4	8.7	2,667.9	2,667.9	1.36	-0.48	-1.27



# Stryker Directional Survey Report



<b>Company:</b>	Mewbourne Oil Company	<b>Local Co-ordinate Reference:</b>	Well Glock 17 MP Federal #1H
<b>Project:</b>	Eddy County, New Mexico	<b>TVD Reference:</b>	GL 3267 -20 @ 3287.0usft (Patterson 45)
<b>Site:</b>	Glock 17 MP Federal #1H	<b>MD Reference:</b>	GL 3267 -20 @ 3287.0usft (Patterson 45)
<b>Well:</b>	Glock 17 MP Federal #1H	<b>North Reference:</b>	Grid
<b>Wellbore:</b>	OH	<b>Survey Calculation Method:</b>	Minimum Curvature
<b>Design:</b>	OH	<b>Database:</b>	EDM5000.1 Single User Db

Measured Depth (usft)	Inclination (°)	Azimuth (°)	Vertical Depth (usft)	+N/-S (usft)	+E/-W (usft)	Vertical Section (usft)	Dogleg Rate (°/100usft)	Build Rate (°/100usft)	Turn Rate (°/100usft)
10,370.0	89.60	88.10	7,771.1	10.1	2,734.9	2,734.9	2.17	0.60	-2.09
10,433.0	89.30	88.10	7,771.7	12.2	2,797.9	2,797.9	0.48	-0.48	0.00
10,497.0	89.20	88.00	7,772.5	14.3	2,861.8	2,861.8	0.22	-0.16	-0.16
10,560.0	89.10	88.10	7,773.5	16.5	2,924.8	2,924.8	0.22	-0.16	0.16
10,624.0	89.00	87.90	7,774.5	18.7	2,988.7	2,988.7	0.35	-0.16	-0.31
10,687.0	89.40	87.50	7,775.4	21.2	3,051.7	3,051.7	0.90	0.63	-0.63
10,751.0	88.70	87.60	7,776.5	24.0	3,115.6	3,115.6	1.10	-1.09	0.16
10,814.0	88.60	87.70	7,778.0	26.6	3,178.5	3,178.5	0.22	-0.16	0.16
10,878.0	88.00	88.20	7,779.9	28.8	3,242.5	3,242.5	1.22	-0.94	0.78
10,941.0	87.90	88.30	7,782.1	30.8	3,305.4	3,305.4	0.22	-0.16	0.16
11,005.0	88.00	88.90	7,784.4	32.3	3,369.3	3,369.3	0.95	0.16	0.94
11,068.0	88.00	89.30	7,786.6	33.3	3,432.3	3,432.3	0.63	0.00	0.63
11,132.0	88.50	89.50	7,788.6	34.0	3,496.3	3,496.3	0.84	0.78	0.31
11,195.0	88.60	89.40	7,790.1	34.6	3,559.2	3,559.2	0.22	0.16	-0.16
11,259.0	88.50	89.30	7,791.8	35.3	3,623.2	3,623.2	0.22	-0.16	-0.16
11,322.0	89.40	89.30	7,792.9	36.1	3,686.2	3,686.2	1.43	1.43	0.00
11,386.0	89.10	88.90	7,793.8	37.1	3,750.2	3,750.2	0.78	-0.47	-0.63
11,449.0	89.10	88.90	7,794.7	38.3	3,813.2	3,813.2	0.00	0.00	0.00
11,513.0	89.50	89.20	7,795.5	39.4	3,877.1	3,877.1	0.78	0.63	0.47
11,576.0	89.30	89.00	7,796.2	40.4	3,940.1	3,940.1	0.45	-0.32	-0.32
11,640.0	89.40	89.10	7,796.9	41.4	4,004.1	4,004.1	0.22	0.16	0.16
11,703.0	89.50	89.10	7,797.5	42.4	4,067.1	4,067.1	0.16	0.16	0.00
11,767.0	89.60	89.50	7,798.0	43.2	4,131.1	4,131.1	0.64	0.16	0.63
11,830.0	89.60	89.50	7,798.5	43.7	4,194.1	4,194.1	0.00	0.00	0.00
11,894.0	89.70	89.90	7,798.9	44.1	4,258.1	4,258.1	0.64	0.16	0.63
11,957.0	89.40	89.80	7,799.3	44.2	4,321.1	4,321.1	0.50	-0.48	-0.16
12,021.0	89.30	89.50	7,800.1	44.6	4,385.1	4,385.1	0.49	-0.16	-0.47
12,085.0	89.40	89.40	7,800.8	45.2	4,449.1	4,449.1	0.22	0.16	-0.16
12,148.0	89.50	89.30	7,801.4	46.0	4,512.1	4,512.1	0.22	0.16	-0.16
12,212.0	89.30	89.40	7,802.1	46.7	4,576.1	4,576.1	0.35	-0.31	0.16
12,275.0	89.40	89.30	7,802.8	47.4	4,639.1	4,639.1	0.22	0.16	-0.16
12,332.0	89.40	89.00	7,803.4	48.2	4,696.1	4,696.1	0.53	0.00	-0.53
12,390.0	89.40	89.00	7,804.0	49.3	4,754.0	4,754.0	0.00	0.00	0.00

12390' MD Projected to Bit - PBHL Glock 17 MP Federal #1H

Design Annotations					
Measured Depth (usft)	Vertical Depth (usft)	Local Coordinates		Comment	
		+N/-S (usft)	+E/-W (usft)		
7,100.0	7,088.3	-214.1	-97.5	7100' MD MS Gyro	
12,390.0	7,804.0	49.3	4,754.0	12390' MD Projected to Bit	



# Stryker Directional Survey Report



<b>Company:</b>	Mewbourne Oil Company	<b>Local Co-ordinate Reference:</b>	Well: Glock 17 MP Federal #1H
<b>Project:</b>	Eddy County, New Mexico	<b>TVD Reference:</b>	GL-3267 +20 @ 3287.0usft (Patterson 45)
<b>Site:</b>	Glock 17 MP Federal #1H	<b>MD Reference:</b>	GL-3267 +20 @ 3287.0usft (Patterson 45)
<b>Well:</b>	Glock 17 MP Federal #1H	<b>North Reference:</b>	Grid
<b>Wellbore:</b>	OH	<b>Survey Calculation Method:</b>	Minimum Curvature
<b>Design:</b>	OH	<b>Database:</b>	EDM 5000.1 Single User Db



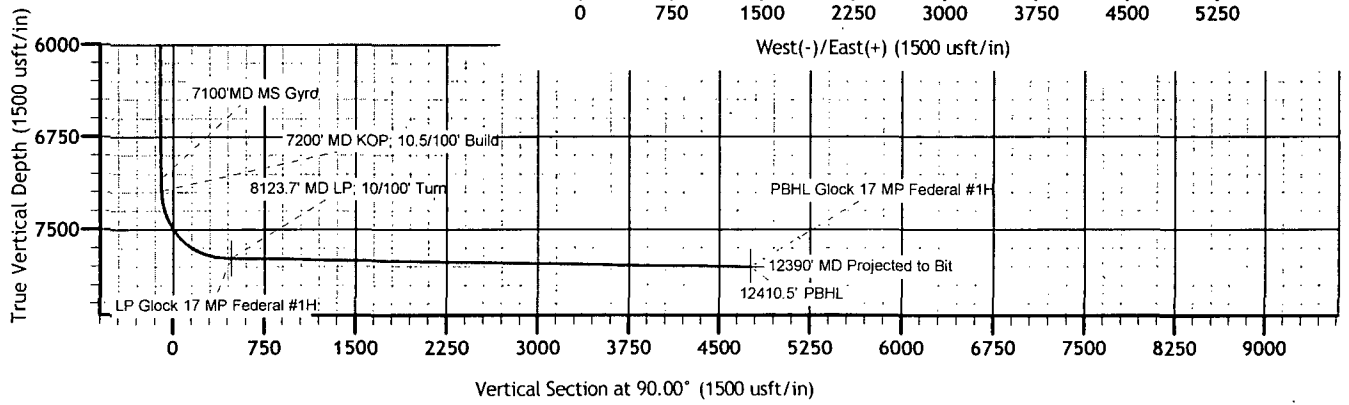
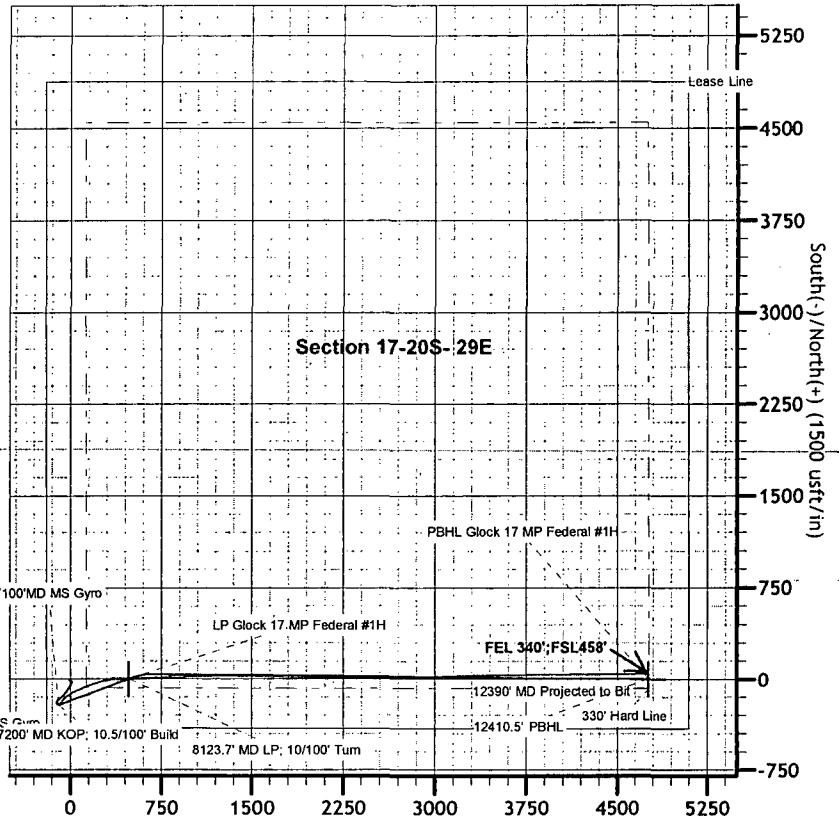
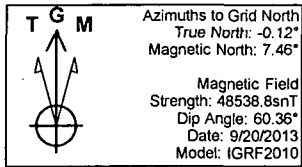
COMPANY: Mewbourne Oil Company  
 WELL: Glock 17 MP Federal #1H  
 COUNTY: Eddy County, New Mexico  
 DATUM: NAD 1927 (NADCON CONUS)

RIG: Patterson 45  
 GRID CORRECTION: To convert a Magnetic Direction to a Grid Direction, Add 7.46°

OFFICE: 936.582.7296

GEODETTIC ZONE: New Mexico East 3001							
GL 3267 + 20 @ 3287.0usft (Patterson 45)							
GROUND ELEVATION: 3267.0							
+N-S	+E-W	Northing	Easting	Latitude	Longitude	Slot	
0.0	0.0	570144.41	570447.90	32° 34' 2.014 N	104° 6' 16.774 W		

PLAN SECTIONS										
Sec	MD	Inc	Azi	TVD	+N-S	+E-W	Dleg	TFace	Vsect	Target
1	7100.0	0.81	137.81	7088.3	-214.1	-97.5	0.00	0.00	-97.5	
2	7200.0	0.81	137.81	7188.3	-215.2	-96.5	0.00	0.00	-96.5	
3	8043.4	88.93	68.88	7730.5	-29.0	405.1	10.51	-68.95	405.1	
4	8123.7	88.93	68.88	7732.0	0.0	480.0	0.00	0.00	480.0	LP Glock 17 MP Federal #1H
5	8340.3	89.00	90.54	7736.0	38.5	691.8	10.00	90.02	691.8	
6	12410.5	89.00	90.54	7807.0	0.0	4761.2	0.00	0.00	4761.2	PBHL Glock 17 MP Federal #1H







<b>Company:</b> Mewbourne O&G <b>Lease / Well:</b> GLOCK 17 MP FED. #1H <b>County/Parish:</b> Eddy County <b>State:</b> NM <b>Date:</b> 10/10/2013 <b>API#:</b> 30-015-41417 <b>Dir. Company:</b> TRYKER <b>Latitude:</b> 32 34 2.014 <b>Longitude:</b> 104 6 16.774	<b>Operator:</b> Shawn F <b>Job Number:</b> SVMO-130846 <b>Gyro Serial #:</b> 7409 <b>Proposed Direction:</b> 90 <b>Mag. Declination:</b> 7.46 EAST TO GRID <b>Rig/RKB:</b> Patterson 45 18 ft. <b>Tie-in Company:</b> Surface <b>X:</b> <b>Y:</b>
--	--

TIE-IN Survey					
Measured Depth (ft.)	Inclination	Azimuth Bearing	Vertical Depth	Coordinates (+N/-S) (+E/-W)	
0.00	0.00	0.00	0.00	0.00	0.00

Digital Multi-Shot Survey Report									
Measured Depth (ft.)	Inclination	Azimuth Bearing	Vertical Depth	Vertical Section	Coordinates (+N/-S) (+E/-W)		Dog-Leg / 100 ft.	Closure Distance	Closure Direction
100.00	0.69	166.67	100.00	0.14	-0.59	0.14	0.69	0.60	166.67
200.00	0.90	190.81	199.99	0.13	-1.94	0.13	0.39	1.95	176.16
300.00	1.42	213.00	299.97	-0.69	-3.75	-0.69	0.68	3.82	190.44
400.00	1.41	203.62	399.94	-1.86	-5.92	-1.86	0.23	6.21	197.44
500.00	1.99	213.25	499.89	-3.30	-8.50	-3.30	0.64	9.12	201.25
600.00	1.55	213.38	599.85	-5.00	-11.08	-5.00	0.44	12.16	204.29
700.00	1.37	172.72	699.82	-5.59	-13.40	-5.59	1.03	14.52	202.66
800.00	1.26	116.65	799.79	-4.46	-15.08	-4.46	1.24	15.72	196.48
900.00	1.52	124.02	899.76	-2.38	-16.31	-2.38	0.32	16.48	188.29
1000.00	1.60	107.03	999.73	0.06	-17.46	0.06	0.47	17.46	179.81
1100.00	1.79	115.78	1099.68	2.80	-18.55	2.80	0.32	18.76	171.42
1200.00	1.04	107.77	1199.65	5.07	-19.51	5.07	0.77	20.15	165.43
1300.00	0.93	118.53	1299.64	6.65	-20.17	6.65	0.21	21.24	161.76
1400.00	1.18	126.49	1399.62	8.19	-21.17	8.19	0.29	22.70	158.86
1500.00	1.44	145.49	1499.59	9.73	-22.82	9.73	0.50	24.80	156.91
1600.00	1.13	146.54	1599.57	10.98	-24.68	10.98	0.31	27.01	156.01
1700.00	1.28	147.68	1699.55	12.12	-26.44	12.12	0.15	29.09	155.37
1800.00	1.06	191.00	1799.53	12.54	-28.29	12.54	0.89	30.95	156.09
1900.00	0.91	190.89	1899.51	12.22	-29.98	12.22	0.15	32.38	157.83
2000.00	1.11	233.23	1999.50	11.29	-31.34	11.29	0.75	33.31	160.19
2100.00	2.20	217.46	2099.46	9.35	-33.45	9.35	1.17	34.73	164.38
2200.00	3.29	204.89	2199.34	6.97	-37.57	6.97	1.24	38.21	169.49
2300.00	4.57	196.94	2299.10	4.60	-43.99	4.60	1.39	44.23	174.02
2400.00	5.29	202.96	2398.73	1.65	-52.04	1.65	0.89	52.07	178.19
2500.00	6.78	210.76	2498.18	-3.17	-61.36	-3.17	1.70	61.44	182.96
2600.00	7.98	212.12	2597.35	-9.88	-72.31	-9.88	1.21	72.98	187.78
2700.00	8.46	212.72	2696.32	-17.55	-84.38	-17.55	0.49	86.18	191.75
2800.00	8.84	215.32	2795.18	-25.97	-96.84	-25.97	0.55	100.26	195.01
2900.00	9.16	218.08	2893.95	-35.32	-109.37	-35.32	0.54	114.93	197.90
3000.00	9.36	219.98	2992.65	-45.45	-121.87	-45.45	0.37	130.07	200.45
3100.00	8.08	220.57	3091.49	-55.25	-133.44	-55.25	1.28	144.42	202.49
3200.00	6.54	224.89	3190.68	-63.84	-142.81	-63.84	1.63	156.43	204.09
3300.00	5.24	225.42	3290.15	-71.11	-150.05	-71.11	1.30	166.05	205.36
3400.00	4.73	227.07	3389.77	-77.38	-156.07	-77.38	0.53	174.20	206.37
3500.00	4.04	235.47	3489.48	-83.30	-160.87	-83.30	0.94	181.16	207.38
3600.00	3.12	230.54	3589.28	-88.31	-164.60	-88.31	0.97	186.79	208.21
3700.00	2.62	225.59	3689.15	-92.04	-167.93	-92.04	0.56	191.50	208.73
3800.00	2.26	225.39	3789.06	-95.08	-170.91	-95.08	0.36	195.58	209.09
3900.00	1.96	222.05	3889.00	-97.63	-173.57	-97.63	0.32	199.14	209.36
4000.00	1.97	218.00	3988.94	-99.83	-176.19	-99.83	0.14	202.51	209.54
4100.00	1.71	213.87	4088.89	-101.72	-178.78	-101.72	0.29	205.69	209.64
4200.00	1.46	226.83	4188.85	-103.48	-180.89	-103.48	0.44	208.40	209.77
4300.00	1.35	228.02	4288.82	-105.29	-182.55	-105.29	0.11	210.74	209.97
4400.00	1.94	212.39	4388.78	-107.07	-184.77	-107.07	0.74	213.55	210.09
4500.00	2.39	205.76	4488.70	-108.88	-188.08	-108.88	0.51	217.32	210.07
4600.00	1.86	192.81	4588.64	-110.15	-191.54	-110.15	0.71	220.95	209.90
4700.00	1.41	181.38	4688.60	-110.54	-194.35	-110.54	0.55	223.59	209.63



<b>Company:</b> Mewbourne O&G <b>Lease / Well:</b> GLOCK 17 MP FED. #1H <b>County/Parish:</b> Eddy County <b>State:</b> NM <b>Date:</b> 10/10/2013 <b>API#:</b> 30-015-41417 <b>Dir. Company:</b> TRYKER <b>Latitude:</b> 32 34 2.014 <b>Longitude:</b> 104 6 16.774	<b>Operator:</b> Shawn F <b>Job Number:</b> SVM0-130846 <b>Gyro Serial #:</b> 7409 <b>Proposed Direction:</b> 90 <b>Mag. Declination:</b> 7.46 EAST TO GRID <b>Rig/RKB:</b> Patterson 45 18 ft. <b>Tie-in Company:</b> Surface <b>X:</b> <b>Y:</b>
--	--

TIE-IN Survey					
Measured Depth (ft.)	Inclination	Azimuth Bearing	Vertical Depth	Coordinates (+N/-S) (+E/-W)	
0.00	0.00	0.00	0.00	0.00	0.00

Digital Multi-Shot Survey Report									
Measured Depth (ft.)	Inclination	Azimuth Bearing	Vertical Depth	Vertical Section	Coordinates (+N/-S) (+E/-W)		Dog-Leg / 100 ft.	Closure Distance	Closure Direction
4800.00	1.49	186.36	4788.56	-110.71	-196.87	-110.71	0.15	225.87	209.35
4900.00	1.14	149.31	4888.54	-110.35	-199.02	-110.35	0.90	227.56	209.01
5000.00	1.53	139.34	4988.51	-108.97	-200.89	-108.97	0.45	228.54	208.48
5100.00	1.30	128.35	5088.48	-107.21	-202.60	-107.21	0.35	229.22	207.89
5200.00	1.22	134.54	5188.46	-105.56	-204.06	-105.56	0.16	229.74	207.35
5300.00	1.02	159.75	5288.44	-104.49	-205.64	-104.49	0.53	230.66	206.94
5400.00	0.91	178.14	5388.42	-104.16	-207.27	-104.16	0.33	231.97	206.68
5500.00	0.88	194.57	5488.41	-104.33	-208.80	-104.33	0.26	233.42	206.55
5600.00	0.74	182.11	5588.40	-104.54	-210.19	-104.54	0.22	234.75	206.44
5700.00	0.58	213.04	5688.40	-104.84	-211.26	-104.84	0.38	235.85	206.39
5800.00	0.42	247.06	5788.39	-105.46	-211.83	-105.46	0.33	236.63	206.47
5900.00	0.43	244.90	5888.39	-106.14	-212.13	-106.14	0.02	237.20	206.58
6000.00	0.60	126.93	5988.39	-106.06	-212.60	-106.06	0.89	237.59	206.51
6100.00	0.60	157.88	6088.38	-105.44	-213.40	-105.44	0.32	238.03	206.29
6200.00	0.22	329.00	6188.38	-105.34	-213.72	-105.34	0.82	238.27	206.24
6300.00	0.22	72.11	6288.38	-105.26	-213.50	-105.26	0.34	238.04	206.24
6400.00	0.72	19.85	6388.38	-104.86	-212.85	-104.86	0.61	237.28	206.23
6500.00	0.94	20.97	6488.37	-104.36	-211.49	-104.36	0.22	235.84	206.26
6600.00	0.75	13.80	6588.36	-103.91	-210.09	-103.91	0.22	234.38	206.32
6700.00	0.57	51.31	6688.35	-103.36	-209.15	-103.36	0.46	233.29	206.30
6800.00	1.28	137.33	6788.34	-102.22	-209.66	-102.22	1.36	233.25	205.99
6900.00	1.47	142.69	6888.31	-100.68	-211.50	-100.68	0.23	234.24	205.46
7000.00	1.29	118.88	6988.28	-98.92	-213.06	-98.92	0.60	234.90	204.90
7100.00	0.81	137.81	7088.26	-97.46	-214.13	-97.46	0.59	235.26	204.47