

DISTRICT I

1026 N. French Dr., Hobbs, NM 88240

DISTRICT II

1301 W. Grand Avenue, Artesia, NM 88210

DISTRICT III

1000 Rio Brazos Rd., Aztec, NM 87410

DISTRICT IV

1220 S. St. Francis Dr., Santa Fe, NM 87505

State of New Mexico
Energy, Minerals and Natural Resources DepartmentForm C-102
Revised October 15, 2009Submit one copy to appropriate
District Office

OIL CONSERVATION DIVISION

1220 South St. Francis Dr.
Santa Fe, New Mexico 87505

WELL LOCATION AND ACREAGE DEDICATION PLAT

☐ AMENDED REPORT

API Number 30-015-41418	Pool Code 97494	Pool Name Cotton Wood Draw; Bone Spring
Property Code 39932	Property Name DA VINCI "7" FEDERAL COM	Well Number 4H
OGRID No. 215099	Operator Name CIMAREX ENERGY CO. OF COLORADO	Elevation 3198'

Surface Location

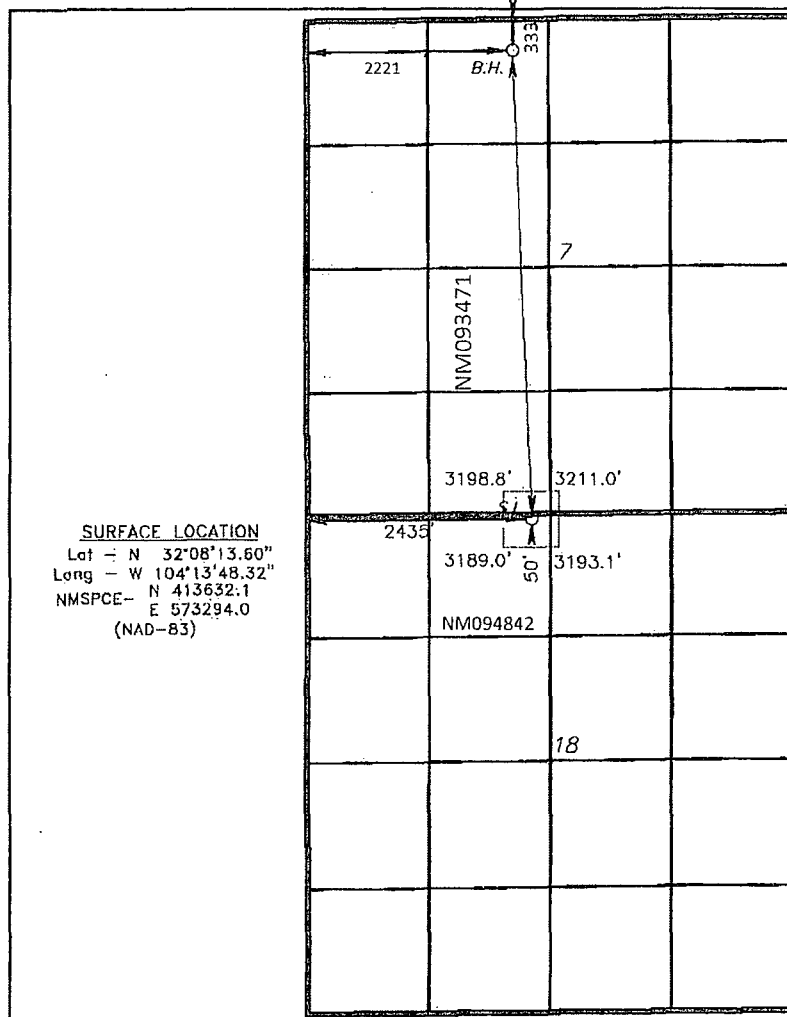
UL or lot No.	Section	Township	Range	Lot Idn	Feet from the	North/South line	Feet from the	East/West line	County
C	18	25 S	27 E		50	NORTH	2435	WEST	EDDY

Bottom Hole Location If Different From Surface

UL or lot No.	Section	Township	Range	Lot Idn	Feet from the	North/South line	Feet from the	East/West line	County
C	7	25 S	27 E		333	NORTH	2221	WEST	EDDY

Dedicated Acres 160	Joint or Infill	Consolidation Code	Order No.
------------------------	-----------------	--------------------	-----------

NO ALLOWABLE WILL BE ASSIGNED TO THIS COMPLETION UNTIL ALL INTERESTS HAVE BEEN CONSOLIDATED
OR A NON-STANDARD UNIT HAS BEEN APPROVED BY THE DIVISION



OPERATOR CERTIFICATION

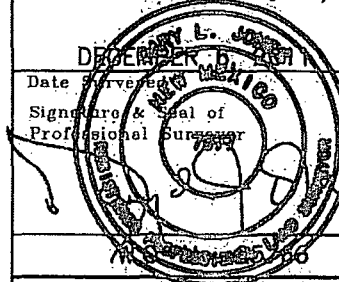
I hereby certify that the information contained herein is true and complete to the best of my knowledge and belief, and that this organization either owns a working interest or unleased mineral interest in the land including the proposed bottom hole location or has a right to drill this well at this location pursuant to a contract with an owner of such a mineral or working interest, or to a voluntary pooling agreement or a compulsory pooling order heretofore entered by the division.

Aricka Easterling 11/7/2013
 Signature Date

Aricka Easterling
 Printed Name
 Aeasterling@cimarex.com

SURVEYOR CERTIFICATION

I hereby certify that the well location shown on this plat was plotted from field notes of actual surveys made by me or under my supervision and that the same is true and correct to the best of my belief.



Certificate No. Gary L. Jones 7977

BASIN SURVEYS