

DISTRICT I  
1825 N. French Dr., Hobbs, NM 80240  
Phone (505) 393-5101 Fax: (505) 393-0720

DISTRICT II  
811 S. First St., Artesia, NM 80210  
Phone (505) 748-1203 Fax: (505) 748-0720

DISTRICT III  
1000 Rio Brazos Rd., Aztec, NM 87410  
Phone (505) 334-0170 Fax: (505) 334-0170

DISTRICT IV  
1220 S. St. Francis Dr., Santa Fe, NM 87505  
Phone (505) 476-3450 Fax: (505) 476-3450

State of New Mexico  
Energy, Minerals and Natural Resources Department

Form C-102  
Revised August 1, 2011

Submit one copy to appropriate  
District Office

**OIL CONSERVATION DIVISION**  
1220 South St. Francis Dr.  
Santa Fe, New Mexico 87505

**WELL LOCATION AND ACREAGE DEDICATION PLAT**

☐ AMENDED REPORT

API Number 30-015-41426	Pool Code 96403	Pool Name Wildcat Bone Spring
Property Code 39937	Property Name SANDY FEDERAL	Well Number 20H
OGRID No. 215099	Operator Name CIMAREX ENERGY CO.	Elevation 3293'

**Surface Location**

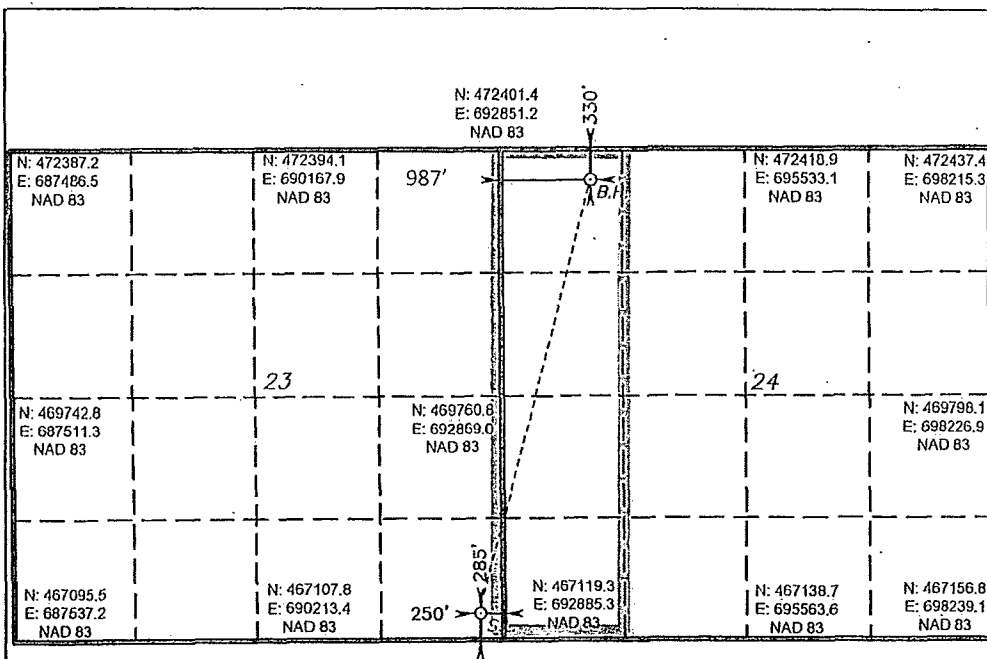
UL or lot No.	Section	Township	Range	Lot Idn	Feet from the	North/South line	Feet from the	East/West line	County
P	23	23 S	30 E		285	SOUTH	250	EAST	EDDY

**Bottom Hole Location If Different From Surface**

UL or lot No.	Section	Township	Range	Lot Idn	Feet from the	North/South line	Feet from the	East/West line	County
A	24	23 S	30 E		330	NORTH	987	WEST	EDDY

Dedicated Acres 160	Joint or Infill	Consolidation Code	Order No. NSL Pending
------------------------	-----------------	--------------------	--------------------------

NO ALLOWABLE WILL BE ASSIGNED TO THIS COMPLETION UNTIL ALL INTERESTS HAVE BEEN CONSOLIDATED  
OR A NON-STANDARD UNIT HAS BEEN APPROVED BY THE DIVISION



**SURFACE LOCATION**  
Lat - N 32°17'02.41"  
Long - W 103°50'37.61"  
NMSPCE- N 467403.2  
E 692633.6  
(NAD-83)

**PROPOSED BOTTOM HOLE LOCATION**  
Lat - N 32°17'48.66"  
Long - W 103°50'23.16"  
NMSPCE- N 472077.9  
E 693843.4  
(NAD-83)

**OPERATOR CERTIFICATION**

I hereby certify that the information contained herein is true and complete to the best of my knowledge and belief, and that this organization either owns a working interest or unleased mineral interest in the land including the proposed bottom hole location or has a right to drill this well at this location pursuant to a contract with an owner of such a mineral or working interest, or to a voluntary pooling agreement or a compulsory pooling order heretofore entered by the division.

*Hope Knauls* 12/5/2013  
Signature Date  
Hope Knauls  
Printed Name  
hknauls@cimarex.com  
Email Address

**SURVEYOR CERTIFICATION**

I hereby certify that the well location shown on this plat was plotted from field notes of actual surveys made by me or under my supervision, and that the same is true and correct to the best of my belief.

*Gary L. Jones*  
Date Surveyed  
Signature & Seal of Professional Surveyor  
Certificate No. Gary L. Jones 7977

BASIN SURVEYS 28455