

District I
1625 N. French Dr., Hobbs, NM 88249
Phone: (575) 393-6161 Fax: (575) 393-0720
District II
811 S. First St., Artesia, NM 88210
Phone: (575) 748-1283 Fax: (575) 748-9720
District III
1000 Rio Brazos Road, Aztec, NM 87410
Phone: (505) 334-6178 Fax: (505) 334-6170
District IV
1220 S. St. Francis Dr., Santa Fe, NM 87505
Phone: (505) 426-3460 Fax: (505) 426-3462

State of New Mexico
Energy, Minerals & Natural Resources Department
OIL CONSERVATION DIVISION
1220 South St. Francis Dr.
Santa Fe, NM 87505

Form C-102
Revised August 1, 2011
Submit one copy to appropriate
District Office
☐ AMENDED REPORT

WELL LOCATION AND ACREAGE DEDICATION PLAT

As Drilled

¹ API Number 30-015-41106		² Pool Code 41480		³ Pool Name LUSK; BONE SPRING W.	
⁴ Property Code		⁵ Property Name ANTARES "23" FED			⁶ Well Number 2H
⁷ OGRID No. 6137		⁸ Operator Name DEVON ENERGY PRODUCTION COMPANY, L.P.			⁹ Elevation 3540.6

¹⁰ Surface Location

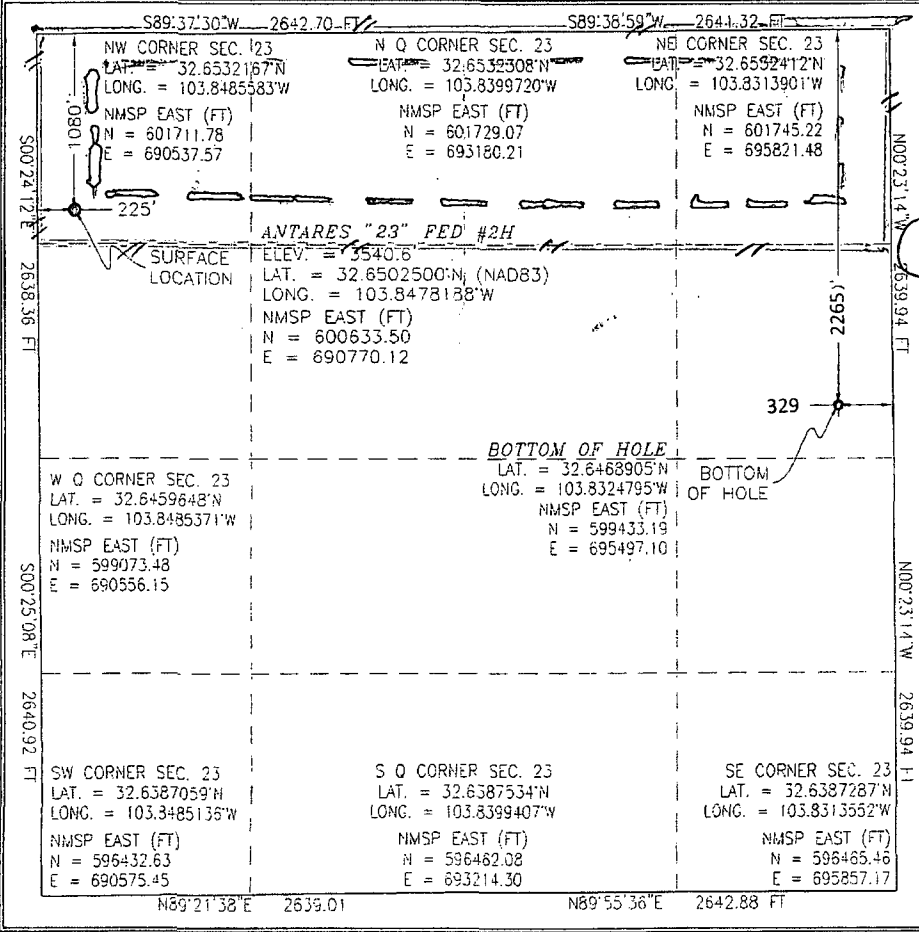
U/L or lot no.	Section	Township	Range	Lot Idn	Feet from the	North/South line	Feet from the	East/West line	County
D	23	19 S	31 E		1080	NORTH	225	WEST	EDDY

¹¹ Bottom Hole Location If Different From Surface

U/L or lot no.	Section	Township	Range	Lot Idn	Feet from the	North/South line	Feet from the	East/West line	County
H	23	19 S	31 E		2265	NORTH	329	EAST	EDDY

¹² Dedicated Acres 160	¹³ Joint or Infill	¹⁴ Consolidation Code	¹⁵ Order No.
---	-------------------------------	----------------------------------	-------------------------

No allowable will be assigned to this completion until all interests have been consolidated or a non-standard unit has been approved by the division.



¹⁷ OPERATOR CERTIFICATION
I hereby certify that the information contained herein is true and complete to the best of my knowledge and belief, and that this organization either owns a working interest or unleased mineral interest in the land including the proposed bottom hole location or has a right to drill this well at this location pursuant to a contract with an owner of such a mineral or working interest, or to a voluntary pooling agreement or a compulsory pooling order heretofore entered by the division.

Signature: *Judy A. Barnett* Date: _____
Judy A. Barnett Regulatory Specialist
Printed Name: _____
E-mail Address: _____

¹⁸ SURVEYOR CERTIFICATION
I hereby certify that the well location shown on this plat was plotted from field notes of actual surveys made by me or under my supervision, and that the same is true and correct to the best of my belief.

JULY 17, 2013
Date of Survey: _____
Signature and Seal of Professional Surveyor: *FILMON F. JARAMILLO*
Certificate Number: _____ FIRM F. JARAMILLO, PLS 12797
INTERESTED LAND SURVEY NO. 1043R

PP: 1707 FNL & 330 FWL

Project Area: _____

Producing Area: _____