

DISTRICT I
1625 N. French Dr., Hobbs, NM 88240
Phone: (575) 393-6161 Fax: (575) 393-0720
DISTRICT II
811 S. First St., Artesia, NM 88210
Phone: (575) 748-1283 Fax: (575) 748-9720
DISTRICT III
1000 Rio Brazos Rd., Artesia, NM 88210
Phone: (505) 334-6176 Fax: (505) 334-6170
DISTRICT IV
1220 S. St. Francis Dr., Santa Fe, NM 87505
Phone: (505) 476-3460 Fax: (505) 476-3462

State of New Mexico
Energy, Minerals & Natural Resources Department
OIL CONSERVATION DIVISION
1220 South St. Francis Dr. FEB 04 2014
Santa Fe, New Mexico 87505
WOOD ARTESIA

Form C-102
Revised August 1, 2011
Submit one copy to appropriate District Office
☐ AMENDED REPORT

WELL LOCATION AND ACREAGE DEDICATION PLAT

API Number 30-015-41719	Pool Code 51010	Pool Name Red Bluff South Bone Spring
Property Code 40158	Property Name DELAWARE RANCH 12 NC FED COM	Well Number 1H
OGRID No. 14744	Operator Name MEWBOURNE OIL COMPANY	Elevation 2944'

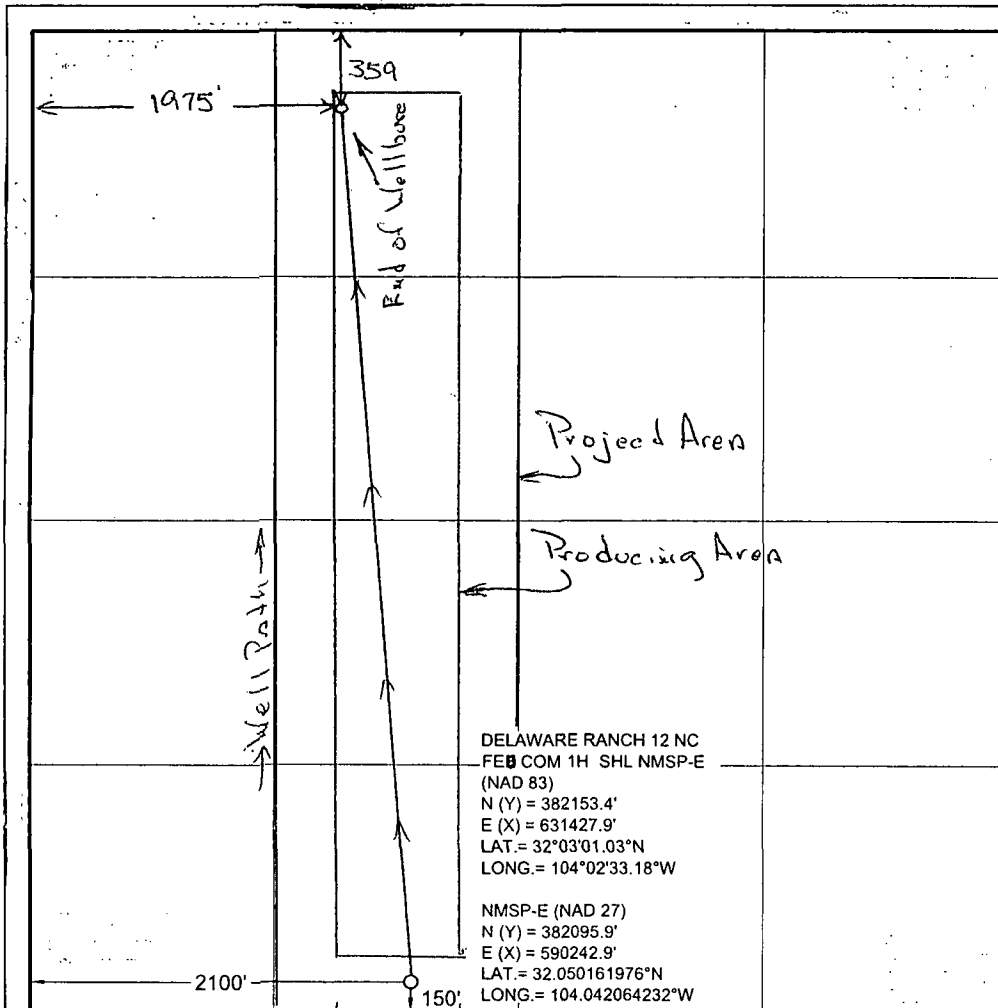
Surface Location

UL or lot no. N	Section 12	Township 26 S	Range 28 E	Lot Idn	Feet from the 150	North/South line SOUTH	Feet from the 2100	East/West line WEST	County EDDY
--------------------	---------------	------------------	---------------	---------	----------------------	---------------------------	-----------------------	------------------------	----------------

Bottom Hole Location If Different From Surface

UL or lot no. C	Section 12	Township 26 S	Range 28 E	Lot Idn	Feet from the 359	North/South line North	Feet from the 1975	East/West line West	County Eddy
Dedicated Acres 160	Joint or Infill	Consolidated Code	Order No.						

No allowable will be assigned to this completion until all interests have been consolidated or a non-standard unit has been approved by the division.



OPERATOR CERTIFICATION

I hereby certify that the information contained herein is true and complete to the best of my knowledge and belief, and that this organization either owns a working interest or unleased mineral interest in the land including the proposed bottom hole location or has a right to drill this well at this location pursuant to a contract with an owner of such a mineral or working interest, or to voluntary pooling agreement or a compulsory pooling order heretofore entered by the division.

Signature: *J. M. Young* Date: 1/12/14

Print Name: J. M. Young

E-mail Address:

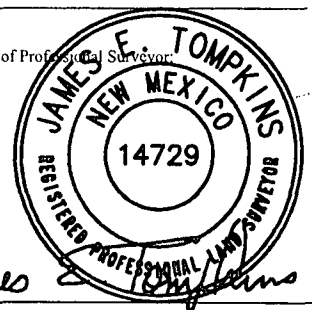
SURVEYORS CERTIFICATION

I hereby certify that the well location shown on this plat was plotted from field notes of actual surveys made by me or under my supervision, and that the same is true and correct to the best of my belief.

JUNE 1, 2013

Date of Survey

Signature and Seal of Professional Surveyor:



Job No.: WTC49092
JAMES E. TOMPKINS 14729
Certificate Number