

District I
1625 N. French Dr., Hobbs, NM 88240
Phone: (575) 393-6161 Fax: (575) 393-0720

District II
811 S. First St., Artesia, NM 88210
Phone: (575) 748-1283 Fax: (575) 748-9720

District III
1000 Rio Brazos Road, Aztec, NM 87410
Phone: (505) 334-6178 Fax: (505) 334-6170

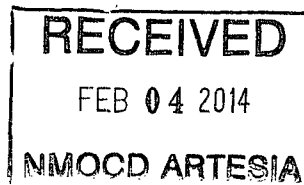
District IV
1220 S. St. Francis Dr., Santa Fe, NM 87505
Phone: (505) 476-3460 Fax: (505) 476-3462

State of New Mexico

Form C-101
Revised July 18, 2013

Energy Minerals and Natural Resources

Oil Conservation Division
1220 South St. Francis Dr.
Santa Fe, NM 87505



APPLICATION FOR PERMIT TO DRILL, RE-ENTER, DEEPEN, PLUGBACK, OR ADD A ZONE

1. Operator Name and Address COG Operating LLC 2208 West Main Street Artesia, NM 88210		2. OGRID Number 229137
3. Property Code 70112		4. API Number 30-015-42021
5. Property Name SRO State Com		6. Well No 33H

7. Surface Location

UL - Lot	Section	Township	Range	Lot Idn	Feet from	N/S Line	Feet From	E/W Line	County
4	4	26S	28E	4	1200	North	660	West	Eddy

8. Proposed Bottom Hole Location

UL - Lot	Section	Township	Range	Lot Idn	Feet from	N/S Line	Feet From	E/W Line	County
M	9	26S	28E	M	330	South	660	West	Eddy

9. Pool Information

Pool Name	Pool Code
Hay Hollow; Bone Spring	30215

Additional Well Information

11. Work Type New Well	12. Well Type Oil	13. Cable/Rotary	14. Lease Type State	15. Ground Level Elevation 2991.4'
16. Multiple N	17. Proposed Depth 16812	18. Formation Bone Spring	19. Contractor	20. Spud Date 2/6/2014
Depth to Ground water		Distance from nearest fresh water well		Distance to nearest surface water

☒ We will be using a closed-loop system in lieu of lined pits

21. Proposed Casing and Cement Program

Type	Hole Size	Casing Size	Casing Weight/ft	Setting Depth	Sacks of Cement	Estimated TOC
Surface	17.5	13.375	48	350	365	
Intmrd	12.25	9.625	36	2420	825	
Production	7.875	5.5	17	16812	2780	2120

Casing/Cement Program: Additional Comments

Drill 17-1/2" hole to ~350' w/ fresh water spud mud. Run 13-3/8" 48# H40 STC casing to TD and cement to surface in one stage. Will use 1" tubing and Class C w/ 2% CaCl₂ to cement to surface, if necessary.

Drill 12-1/4" hole to ~2420' with saturated brine water. Run 9-5/8" 36# J55 LTC casing to TD and cement to surface in one stage.

Drill 7-7/8" vertical hole, curve and lateral to 16812' with cut brine. Run 5-1/2" 17# P110 Tenaris XP BTC casing to TD and cement in one stage bringing TOC to 2120' (300' overlap).

22. Proposed Blowout Prevention Program

Type	Working Pressure	Test Pressure	Manufacturer
Double Ram	3000	3000	Cameron

23. I hereby certify that the information given above is true and complete to the best of my knowledge and belief.
I further certify that I have complied with 19.15.14.9 (A) NMAC ☒ and/or 19.15.14.9 (B) NMAC ☒, if applicable.

Signature:

Printed name: Mayte Reyes

Title: Regulatory Analyst

E-mail Address: mreyes1@concho.com

Date: 1/29/2014

Phone: 575-748-6945

OIL CONSERVATION DIVISION

Approved By:

Title:

Approved Date:

Expiration Date:

Conditions of Approval Attached

DISTRICT I
1625 N. FRENCH DR., HOBBS, NM 88240
Phone: (505) 283-8161 Fax: (505) 283-0720

DISTRICT II
1301 W. GRAND AVENUE, ARTESIA, NM 88210
Phone: (505) 748-1283 Fax: (505) 748-0720

DISTRICT III
1000 RIO BRAZOS RD., AZTEC, NM 87410
Phone: (505) 334-6176 Fax: (505) 334-6170

DISTRICT IV
11885 S. ST. FRANCIS DR., SANTA FE, NM 87505
Phone: (505) 476-3460 Fax: (505) 476-3462

State of New Mexico
Energy, Minerals & Natural Resources Department
OIL CONSERVATION DIVISION
11885 SOUTH ST. FRANCIS DR.
Santa Fe, New Mexico 87505

Form C-102
Revised August 1, 2011
Submit one copy to appropriate

☐ AMENDED REPORT

WELL LOCATION AND ACREAGE DEDICATION PLAT

API Number 30-015- 42021	Pool Code 30215	Pool Name Hay Hollow; Bone Spring
Property Code 40112	Property Name SROSTATE.COM	Well Number 33H
OGRID No. 229137	Operator Name COG OPERATING, LLC	Elevation 2991.4

Surface Location

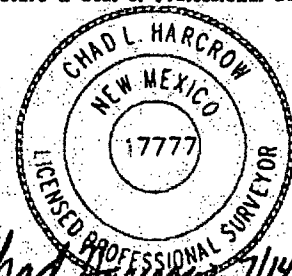
UL or lot No.	Section	Township	Range	Lot Idn	Feet from the	North/South line	Feet from the	East/West line	County
4	4	26-S	28-E		1200	NORTH	660	WEST	EDDY

Bottom Hole Location If Different From Surface

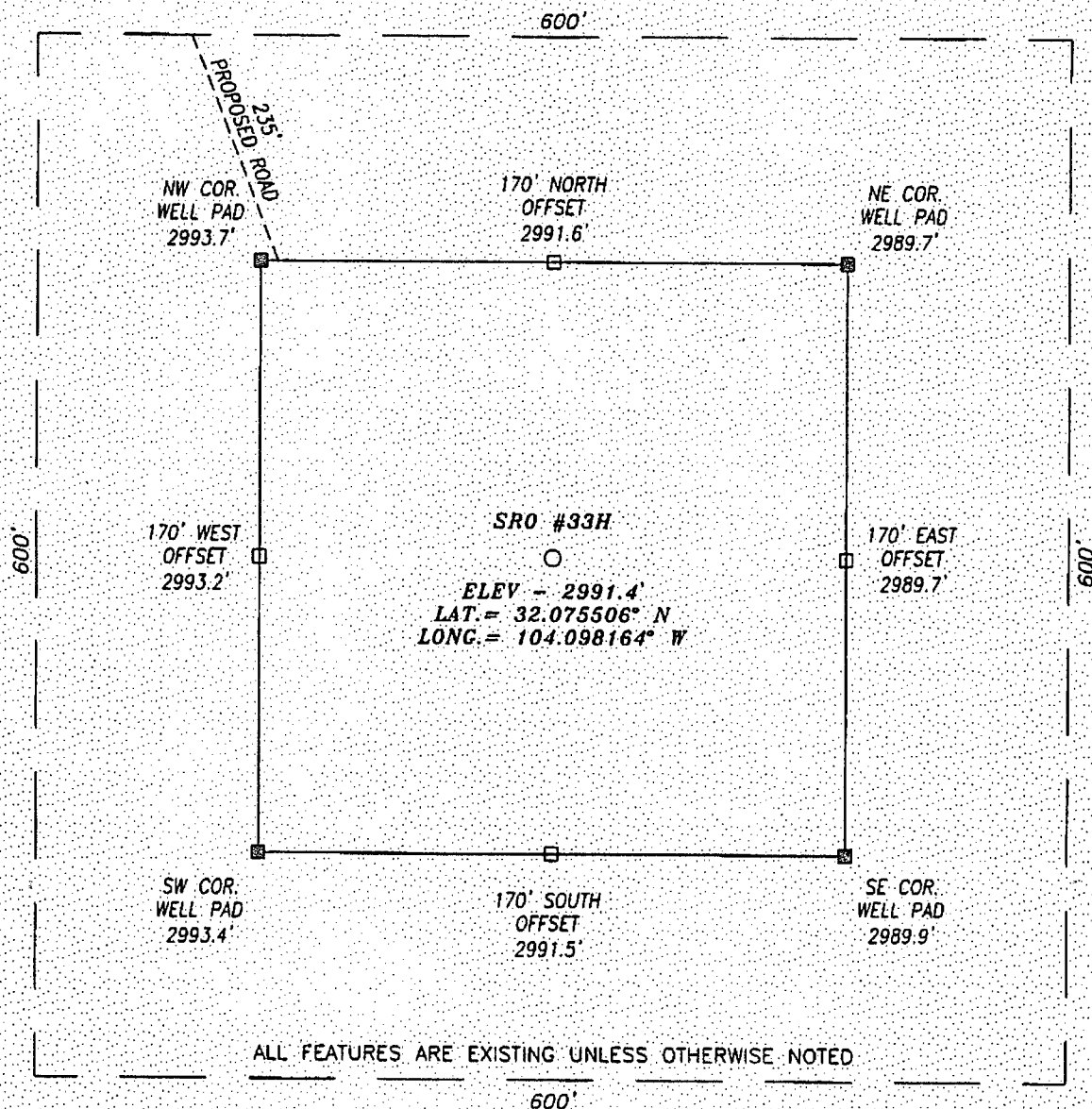
UL or lot No.	Section	Township	Range	Lot Idn	Feet from the	North/South line	Feet from the	East/West line	County
M	9	26-S	28-E		330	SOUTH	660	WEST	EDDY

Dedicated Acres	Joint or Infill	Consolidation Code	Order No.
320			

NO ALLOWABLE WILL BE ASSIGNED TO THIS COMPLETION UNTIL ALL INTERESTS HAVE BEEN CONSOLIDATED
OR A NON-STANDARD UNIT HAS BEEN APPROVED BY THE DIVISION

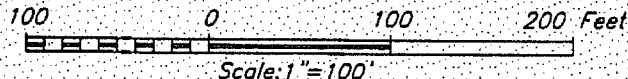
<p>Y=392471.7 N X=572166.9 E</p> <p>NAD 27 <u>SURFACE LOCATION</u> Y=391272.6 N X=572841.5 E LAT.=32.075506° N LONG.=104.098164° W</p> <p>NAD 27 <u>PROPOSED BOTTOM HOLE LOCATION</u> Y=382225.8 N X=572773.7 E LAT.=32.050636° N LONG.=104.098446° W</p> <p>Y=381895.0 N X=572112.1 E</p>	<p>LOT 4 40.25 Ac</p> <p>LOT 3 40.81 Ac</p> <p>LOT 2 40.98 Ac</p> <p>LOT 1 41.16 Ac</p> <p>SECTION 4</p> <p>SECTION 9</p> <p>GRID AZ. 180°25'46" HORZ. DIST. 9,047.1'</p> <p>660' S.L.</p> <p>660' B.H.</p> <p>330'</p>	<p>OPERATOR CERTIFICATION</p> <p>I hereby certify that the information herein is true and complete to the best of my knowledge and belief, and that this organization either owns a working interest or unleased mineral interest in the land including the proposed bottom hole location or has a right to drill this well at this location pursuant to a contract with an owner of such mineral or working interest, or to a voluntary pooling agreement or a compulsory pooling order heretofore entered by the division.</p> <p>Signature <u>Melanie Parker</u> Date <u>1/29/14</u></p> <p>Printed Name <u>Melanie J. Parker</u></p> <p>E-mail Address <u>mparker@concho.com</u></p> <p>SURVEYOR CERTIFICATION</p> <p>I hereby certify that the well location shown on this plat was plotted from field notes of actual surveys made by me or under my supervision, and that the same is true and correct to the best of my belief.</p> <p>JUNE 28, 2013</p> <p>Date of Survey</p> <p>Signature & Seal of Professional Surveyor</p> <p></p> <p>Certificate No. <u>CHAD HARCROW 17777</u></p> <p>W.O. # <u>13-397</u> DRAWN BY: <u>VD</u></p>
--	---	---

SECTION 4, TOWNSHIP 26 SOUTH, RANGE 28 EAST, N.M.P.M.,
EDDY COUNTY NEW MEXICO



DIRECTIONS TO LOCATION

HEADING SOUTH ON HWY 285 TURN RIGHT (WEST) ONTO CR #724 (WHITE CITY RD.) AND GO APPROX. 2.0 MILES; THEN TURN RIGHT (NORTH) ONTO CALICHE RD. AND GO APPROX 0.9 MILES TO EXISTING SRO ST UNIT #1H WELL PAD; GO TO SOUTHEAST PAD CORNER; THEN PROPOSED WELL IS APPROX. 460 FEET SOUTHEAST.



HARCROW SURVEYING, LLC
1107 WATSON, ARTESIA, N.M. 88210
PH: (575) 513-2570 FAX: (575) 746-2158
chad_harcrow77@yahoo.com



COG OPERATING, LLC

SRO #33H WELL
LOCATED 1200 FEET FROM THE NORTH LINE
AND 660 FEET FROM THE WEST LINE OF SECTION 4,
TOWNSHIP 26 SOUTH, RANGE 28 EAST, N.M.P.M.,
EDDY COUNTY, NEW MEXICO

SURVEY DATE: 06/28/2013

PAGE: 1 OF 1

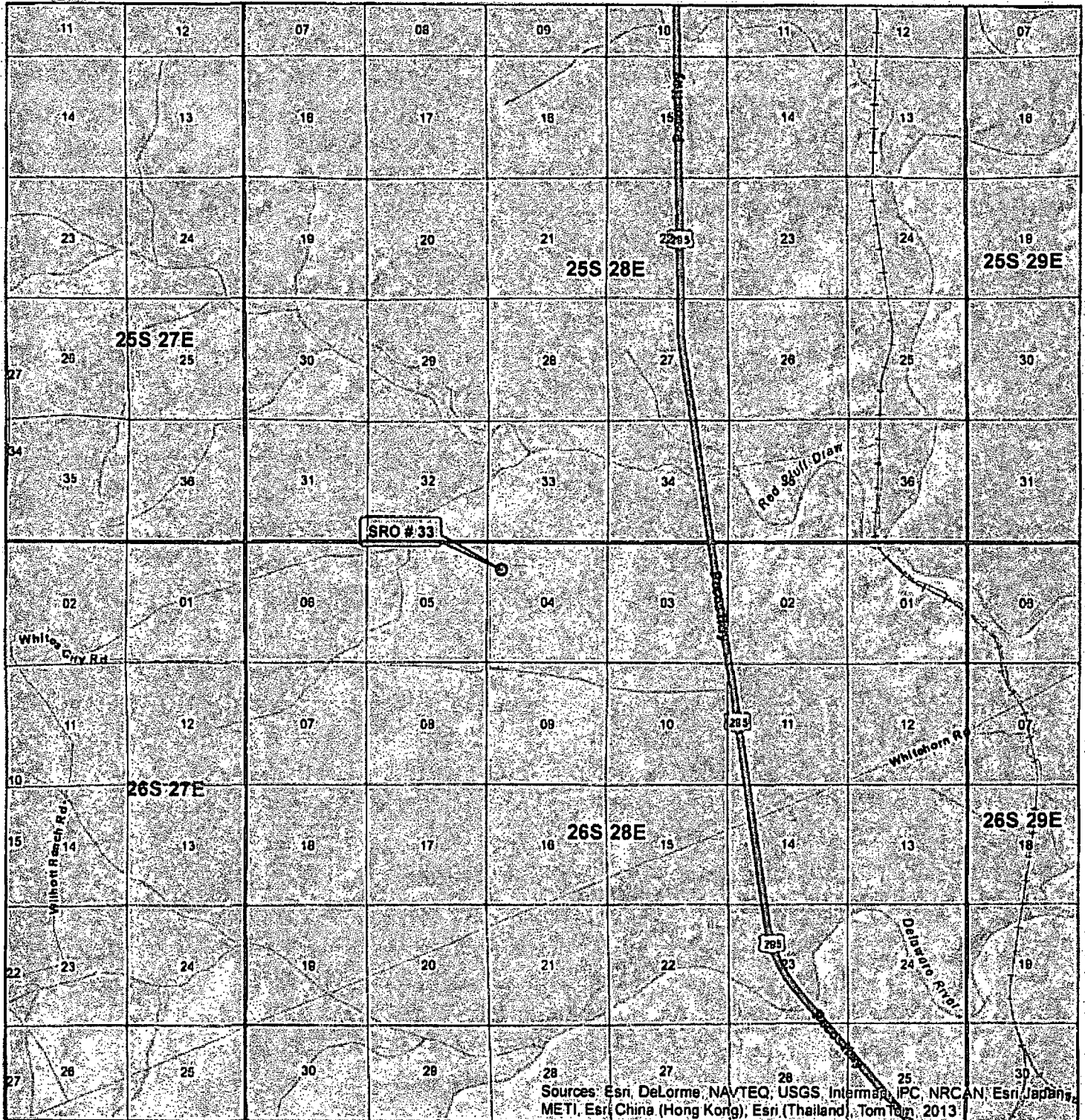
DRAFTING DATE: 07/03/2013

APPROVED BY: CH

DRAWN BY: VD

FILE: 13-397

VICINITY MAP



Sources: Esri, DeLorme, NAVTEQ, USGS, Intermap, IPC, NRCAN, Esri Japan, METI, Esri China (Hong Kong), Esri (Thailand), TomTom, 2013

SEC. 4, TWP. 26S. RGE. 28E
 SURVEY: N.M.P.M.
 COUNTY: EDDY STATE: NEW MEXICO
 DESCRIPTION: SRO #33H
 1200' FNL, 660' FWL

ELEVATION: 2991.4'
 OPERATOR: COG OPERATING LLC
 LEASE: SRO

W.O. # 13-397



1 IN = 6,000 FT

0 0.5 MILES

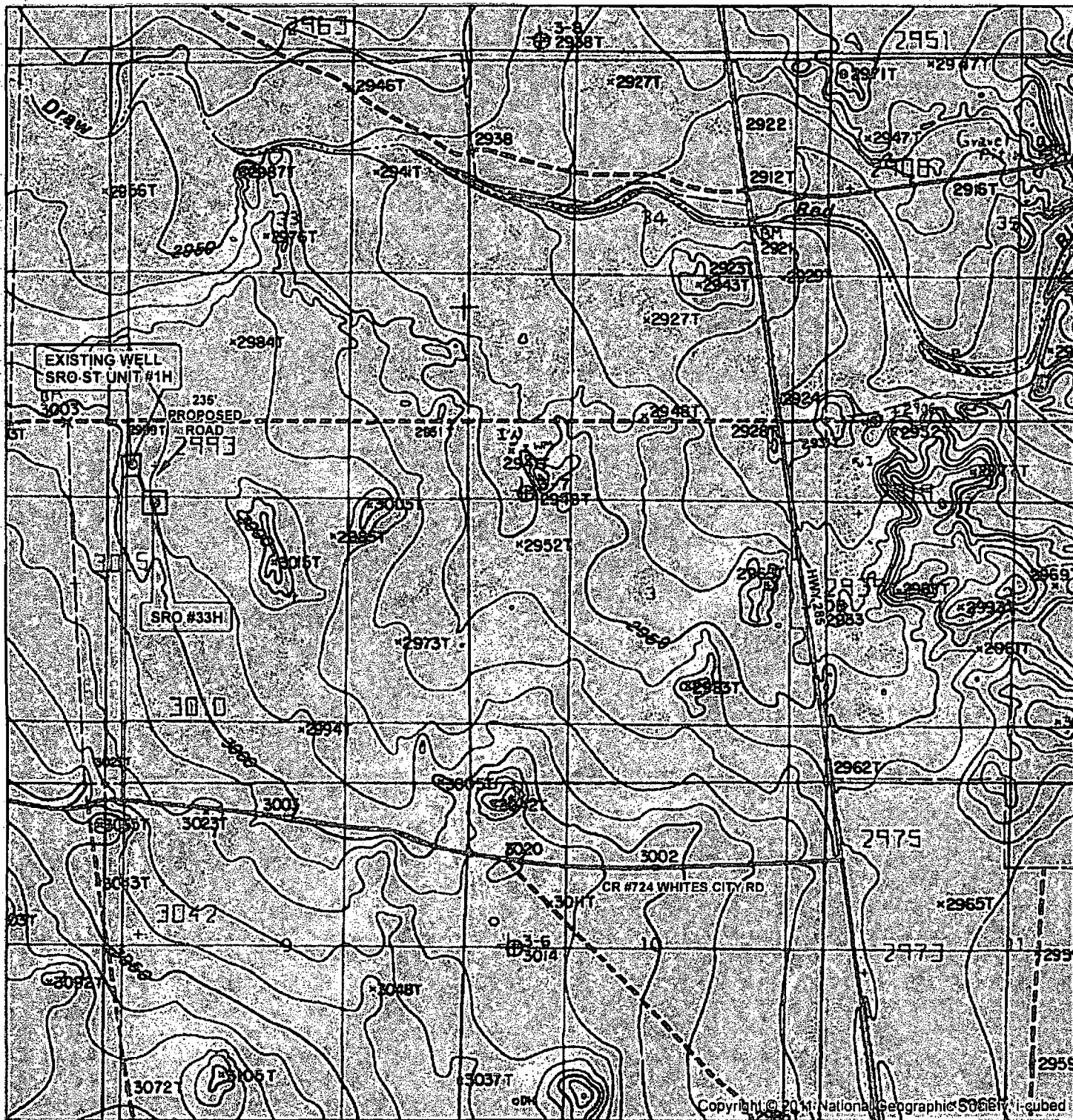
WELL
 TOWNSHIP
 SECTION

HARCROW SURVEYING, LLC
 1107 WATSON, ARTESIA N.M. 88210
 PH: (575) 513-2570 FAX: (575) 746-2158
 chad_harcrow77@yahoo.com



MAP DATE: 7/8/2013

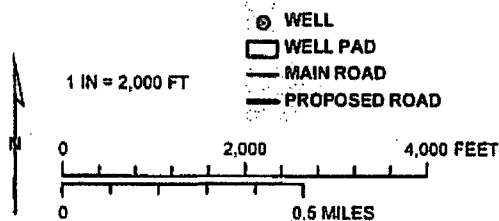
LOCATION VERIFICATION MAP



SEC. 4; TWP. 26S. RGE. 28E
 SURVEY: N.M.P.M
 COUNTY: EDDY STATE: NEW MEXICO
 DESCRIPTION: SRO #33H
 1200' FNL, 660' FWL

ELEVATION: 2991.4'
 OPERATOR: COG OPERATING LLC
 LEASE: SRO

W.O. # 13-397

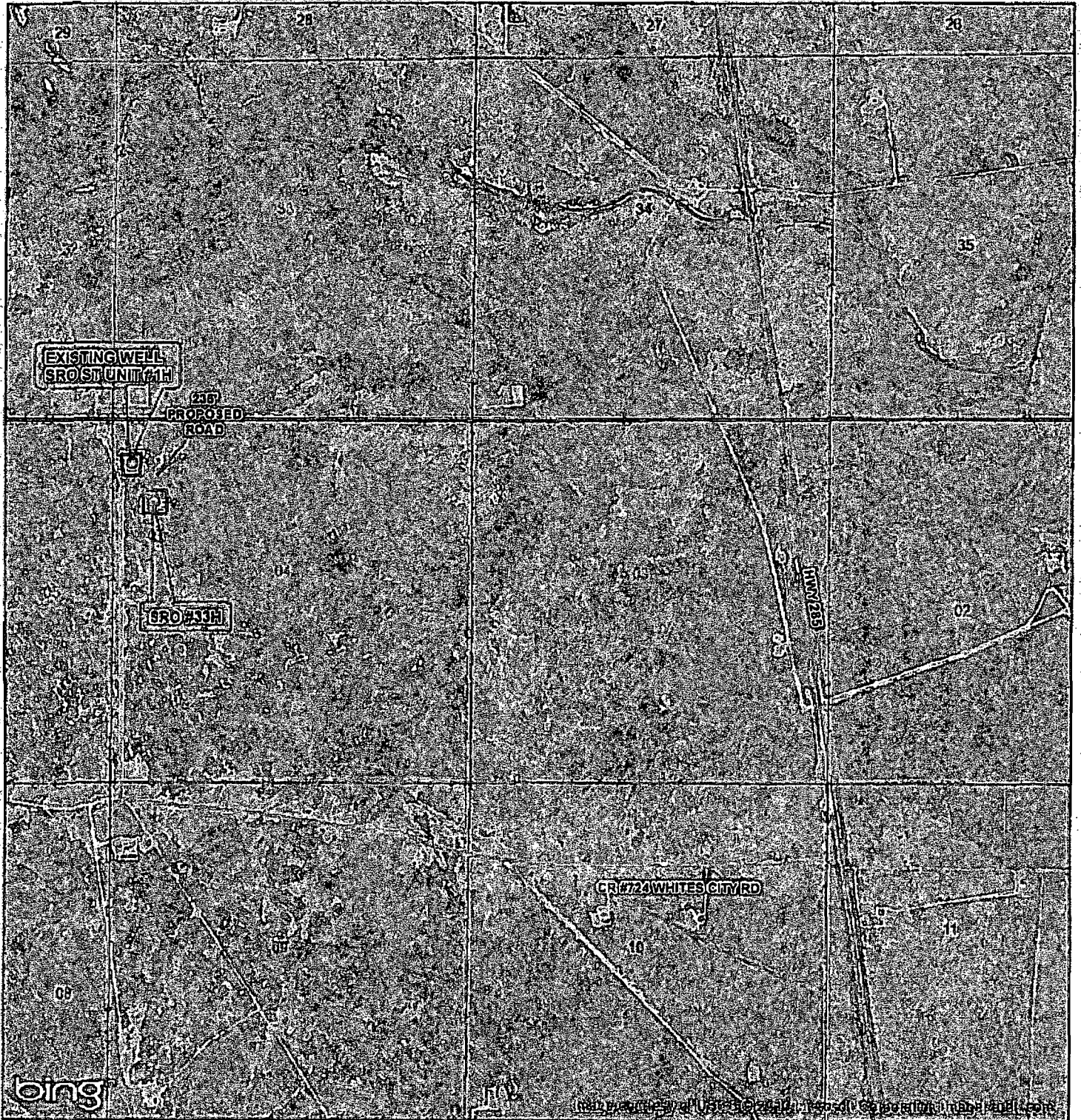


HARCROW SURVEYING, LLC
 1107 WATSON, ARTESIA N.M. 88210
 PH: (575) 513-2570 FAX: (575) 746-2158
 chad_harcrow77@yahoo.com



MAP DATE: 7/8/2013

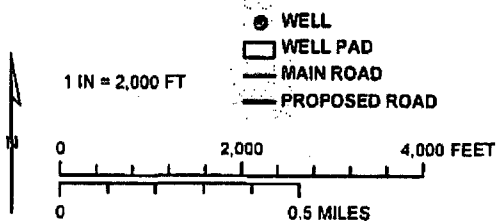
LOCATION VERIFICATION MAP



SEC. 4, TWP. 26S, RGE. 28E
 SURVEY: N.M.P.M
 COUNTY: EDDY STATE: NEW MEXICO
 DESCRIPTION: SRO #33H
 1200' FNL, 660' FWL

ELEVATION: 2991.4'
 OPERATOR: COG OPERATING LLC
 LEASE: SRO

W.O. # 13-397



HARCROW SURVEYING, LLC
 1107 WATSON, ARTESIA NM 88210
 PH: (575) 513-2570 FAX: (575) 746-2158
 chad_harcrow77@yahoo.com



MAP DATE: 7/8/2013