

DISTRICT I
1625 N. French Dr., Hobbs, NM 88240

DISTRICT II
1301 W. Grand Avenue, Artesia, NM 88210

DISTRICT III
1000 Rio Brazos Rd., Aztec, NM 87410

DISTRICT IV
1220 S. St. Francis Dr., Santa Fe, NM 87505

State of New Mexico
Energy, Minerals and Natural Resources Department

OIL CONSERVATION DIVISION

1220 South St. Francis Dr.
Santa Fe, New Mexico 87505

RECEIVED

FEB 10 2014

Form C-102
Revised July 16, 2010

NMOC D ARTESIA

Submit one copy to appropriate
District Office

WELL LOCATION AND ACREAGE DEDICATION PLAT

☒ AMENDED REPORT

As Drilled

API Number 30-015-41420	Pool Code 49622	Pool Name Parkway; Bone Spring
Property Code 39931	Property Name TWO MESAS "7" MP Fed	Well Number 1H
OGRID No. 14744	Operator Name MEWBOURNE OIL COMPANY	Elevation 3314'

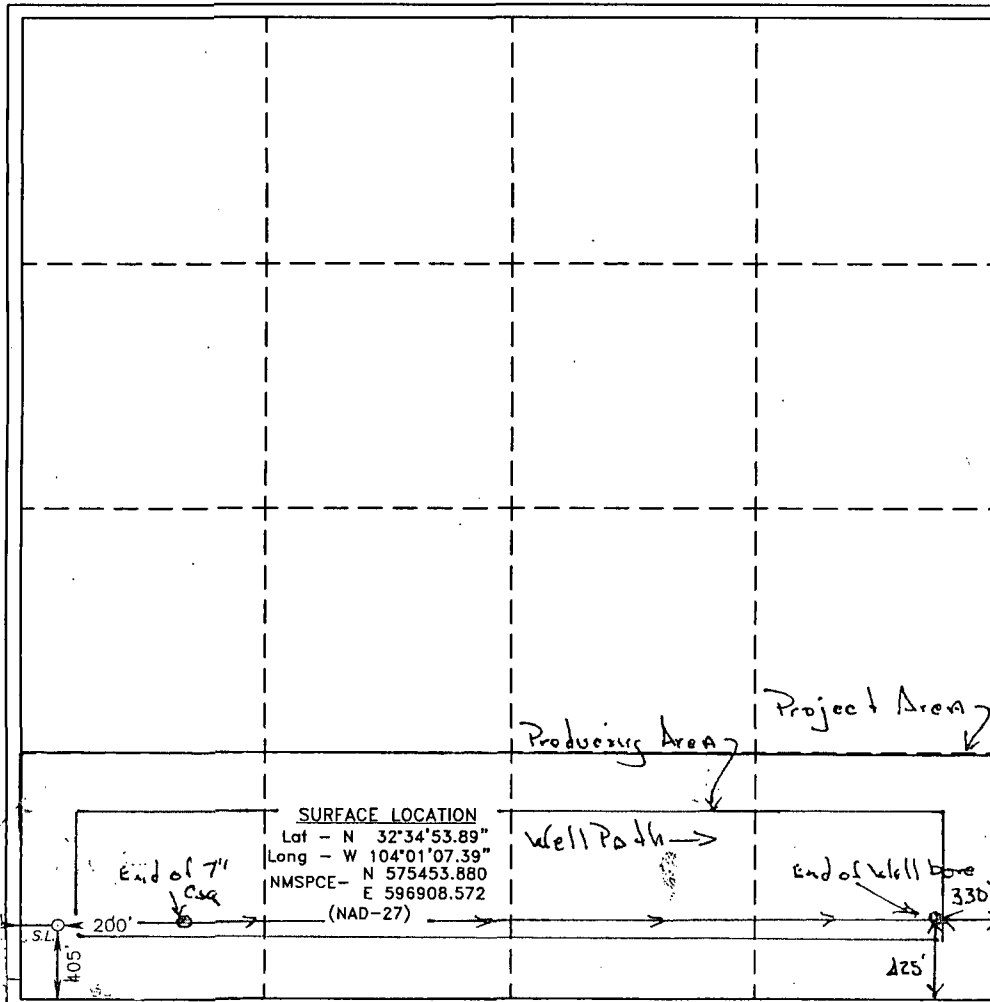
Surface Location

UL or lot No. 4	Section 7	Township 20 S	Range 30 E	Lot Idn	Feet from the 405	North/South line SOUTH	Feet from the 200	East/West line WEST	County EDDY
---------------------------	---------------------	-------------------------	----------------------	---------	-----------------------------	----------------------------------	-----------------------------	-------------------------------	-----------------------

Bottom Hole Location If Different From Surface

UL or lot No. P	Section 7	Township 20S	Range 30E	Lot Idn	Feet from the 425	North/South line South	Feet from the 330	East/West line East	County Eddy
Dedicated Acres 159.27	Joint or Infill	Consolidation Code	Order No.						

NO ALLOWABLE WILL BE ASSIGNED TO THIS COMPLETION UNTIL ALL INTERESTS HAVE BEEN CONSOLIDATED
OR A NON-STANDARD UNIT HAS BEEN APPROVED BY THE DIVISION



OPERATOR CERTIFICATION

I hereby certify that the information contained herein is true and complete to the best of my knowledge and belief, and that this organization either owns a working interest or unleased mineral interest in the land including the proposed bottom hole location or has a right to drill this well at this location pursuant to a contract with an owner of such a mineral or working interest, or to a voluntary pooling agreement or a compulsory pooling order heretofore entered by the division.

[Signature] 1/2/14
Signature Date

N.M. Young
Printed Name

Email Address

SURVEYOR CERTIFICATION

I hereby certify that the well location shown on this plat was plotted from field notes of actual surveys made by me or under my supervision and that the same is true and correct to the best of my belief.

[Signature]
Date Surveyed
Signature & Seal of Professional Surveyor
W.C. Jones
Professional Land Surveyor

Certificate No. Gary L. Jones 7977

BASIN SURVEYS 23980