

OCD Artesia

FORM APPROVED  
OMB No. 1004-0137  
Expires October 31, 2014

UNITED STATES  
DEPARTMENT OF THE INTERIOR  
BUREAU OF LAND MANAGEMENT

APPLICATION FOR PERMIT TO DRILL OR REENTER

5. Lease Serial No. **LC 224-284**  
SL:NMNM000503/ BL:NMNM061862

6. If Indian, Allottee or Tribe Name

1a. Type of work: ☒ DRILL ☐ REENTER

7. If Unit or CA Agreement, Name and No.

1b. Type of Well: ☒ Oil Well ☐ Gas Well ☐ Other ☒ Single Zone ☐ Multiple Zone

8. Lease Name and Well No. **<40411>**  
Cotton Draw 14 Fed Com 1H

2. Name of Operator **Devon Energy Production Company, L.P.**

9. API Well No. **30-015-42091**

3a. Address **333 W. Sheridan Ave.  
Oklahoma City, OK 73102**

3b. Phone No. (include area code)  
**405-228-4248**

10. Field and Pool, or Exploratory  
**Paduca; Bone Spring (O) <96641>**

4. Location of Well (Report location clearly and in accordance with any State requirements. \*)  
At surface **330' FNL & 1150' FWL, Unit D, Sec 14, T25S-R31E PP: 330' FNL & 1150' FWL**  
At proposed prod. zone **330' FSL & 660' FWL, Unit M, Sec 14, T25S-R31E**

11. Sec., T. R. M. or Blk. and Survey or Area  
**Sec 14, T25S-R31E**

14. Distance in miles and direction from nearest town or post office\*  
**Approximately 16 miles southeast of Malaga, NM**

12. County or Parish  
**Eddy**

13. State  
**NM**

15. Distance from proposed\* **330'**  
location to nearest  
property or lease line, ft.  
(Also to nearest drig. unit line, if any)

16. No. of acres in lease  
**NMNM000503 - 2360.00 ac**  
**NMLC061862 - 1720.00 ac**

17. Spacing Unit dedicated to this well  
**W/2 W/2 Sec 14-T25S-R31E = 160 acres**

18. Distance from proposed location\* **see attached 1 mile**  
to nearest well, drilling, completed,  
applied for, on this lease, ft. **radius map**

19. Proposed Depth  
**14787' MD 10398' TVD**  
**10625' PH**

20. BLM/BIA Bond No. on file  
**CO-1104 & NMB-000801**

21. Elevations (Show whether DF, KDB, RT, GL, etc.)  
**3400.6' GL**

22. Approximate date work will start\*  
**05/15/2014**

23. Estimated duration  
**45 days**

24. Attachments **To be pad drilled w/Cotton Draw 14 Fed Com 2H**

The following, completed in accordance with the requirements of Onshore Oil and Gas Order No.1, must be attached to this form:

1. Well plat certified by a registered surveyor.
2. A Drilling Plan.
3. A Surface Use Plan (if the location is on National Forest System Lands, the SUPO must be filed with the appropriate Forest Service Office).
4. Bond to cover the operations unless covered by an existing bond on file (see Item 20 above).
5. Operator certification
6. Such other site specific information and/or plans as may be required by the BLM.

25. Signature **Patti Riechers**

Name (Printed/Typed)  
**Patti Riechers**

Date  
**12/04/2013**

Title  
**Regulatory Specialist**

Approved by (Signature)

**/s/ STEPHEN J. CAFFEY**

Name (Printed/Typed)

Date  
**FEB 12 2014**

Title  
**FIELD MANAGER**

Office

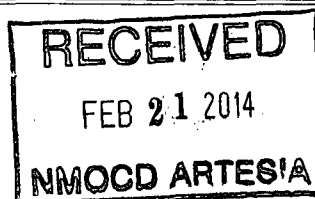
**CARLSBAD FIELD OFFICE**

Application approval does not warrant or certify that the applicant holds legal or equitable title to those rights in the subject lease which would entitle the applicant to conduct operations thereon.  
Conditions of approval, if any, are attached.

**APPROVAL FOR TWO YEARS**

Title 18 U.S.C. Section 1001 and Title 43 U.S.C. Section 1212, make it a crime for any person knowingly and willfully to make to any department or agency of the United States any false, fictitious or fraudulent statements or representations as to any matter within its jurisdiction.

(Continued on page 2)



Carlsbad Controlled Water Basin

SEE ATTACHED FOR  
CONDITIONS OF APPROVAL

Approval Subject to General Requirements  
& Special Stipulations Attached

## Certification

I hereby certify that I, or persons under my direct supervision, have inspected the proposed drill site and access road proposed herein; that I am familiar with the conditions that presently exist; that I have full knowledge of State and Federal laws applicable to this operation; that the statements made in this APD package are, to the best of my knowledge, true and correct; and that the work associated with the operations proposed herein will be performed in conformity with this APD package and the terms and conditions under which it is approved. I also certify that I, or Devon Energy Production Company, L.P. am responsible for the operations conducted under this application. These statements are subject to the provisions of 18 U.S.C. 1001 for the filing of false statements.

I hereby also certify that I, or Devon Energy Production Company, L.P. have made a good faith effort to provide the surface owner with a copy of the Surface Use Plan of Operations and any Conditions of Approval that are attached to the APD.

Executed this 4th day of December, 2013.

Printed Name: Patti Riechers

Signed Name: Patti Riechers

Position Title: Regulatory Specialist

Address: 333 W. Sheridan, OKC OK 73102

Telephone: (405)-552-6559

District I  
1625 N. French Dr., Hobbs, NM 88240  
Phone: (575) 393-6161 Fax: (575) 393-0720  
District II  
811 S. First St., Artesia, NM 88210  
Phone: (575) 748-1283 Fax: (575) 748-9720  
District III  
1000 Rio Brazos Road, Aztec, NM 87410  
Phone: (505) 334-6178 Fax: (505) 334-6170  
District IV  
1220 S. St. Francis Dr., Santa Fe, NM 87505  
Phone: (505) 476-3460 Fax: (505) 476-3462

State of New Mexico  
Energy, Minerals & Natural Resources Department  
OIL CONSERVATION DIVISION  
1220 South St. Francis Dr.  
Santa Fe, NM 87505

Form C-102  
Revised August 1, 2011  
Submit one copy to appropriate  
District Office

☐ AMENDED REPORT

WELL LOCATION AND ACREAGE DEDICATION PLAT

<sup>1</sup> API Number <b>30-015-42091</b>	<sup>2</sup> Pool Code <b>96641</b>	<sup>3</sup> Pool Name <b>Paduca; Bone Spring</b>
<sup>4</sup> Property Code <b>40411</b>	<sup>5</sup> Property Name <b>COTTON DRAW 14 FED COM</b>	<sup>6</sup> Well Number <b>1H</b>
<sup>7</sup> OGRID No. <b>6137</b>	<sup>8</sup> Operator Name <b>DEVON ENERGY PRODUCTION COMPANY, L.P.</b>	<sup>9</sup> Elevation <b>3400.6</b>

<sup>10</sup> Surface Location

UL or lot no.	Section	Township	Range	Lot Idn	Feet from the	North/South line	Feet from the	East/West line	County
<b>D</b>	<b>14</b>	<b>25 S</b>	<b>31 E</b>		<b>330</b>	<b>NORTH</b>	<b>1150</b>	<b>WEST</b>	<b>EDDY</b>

<sup>11</sup> Bottom Hole Location If Different From Surface

UL or lot no.	Section	Township	Range	Lot Idn	Feet from the	North/South line	Feet from the	East/West line	County
<b>M</b>	<b>14</b>	<b>25 S</b>	<b>31 E</b>		<b>330</b>	<b>SOUTH</b>	<b>660</b>	<b>WEST</b>	<b>EDDY</b>

<sup>12</sup> Dedicated Acres <b>160</b>	<sup>13</sup> Joint or Infill	<sup>14</sup> Consolidation Code	<sup>15</sup> Order No. <b>14782</b> <b>2-12</b>
---	-------------------------------	----------------------------------	--

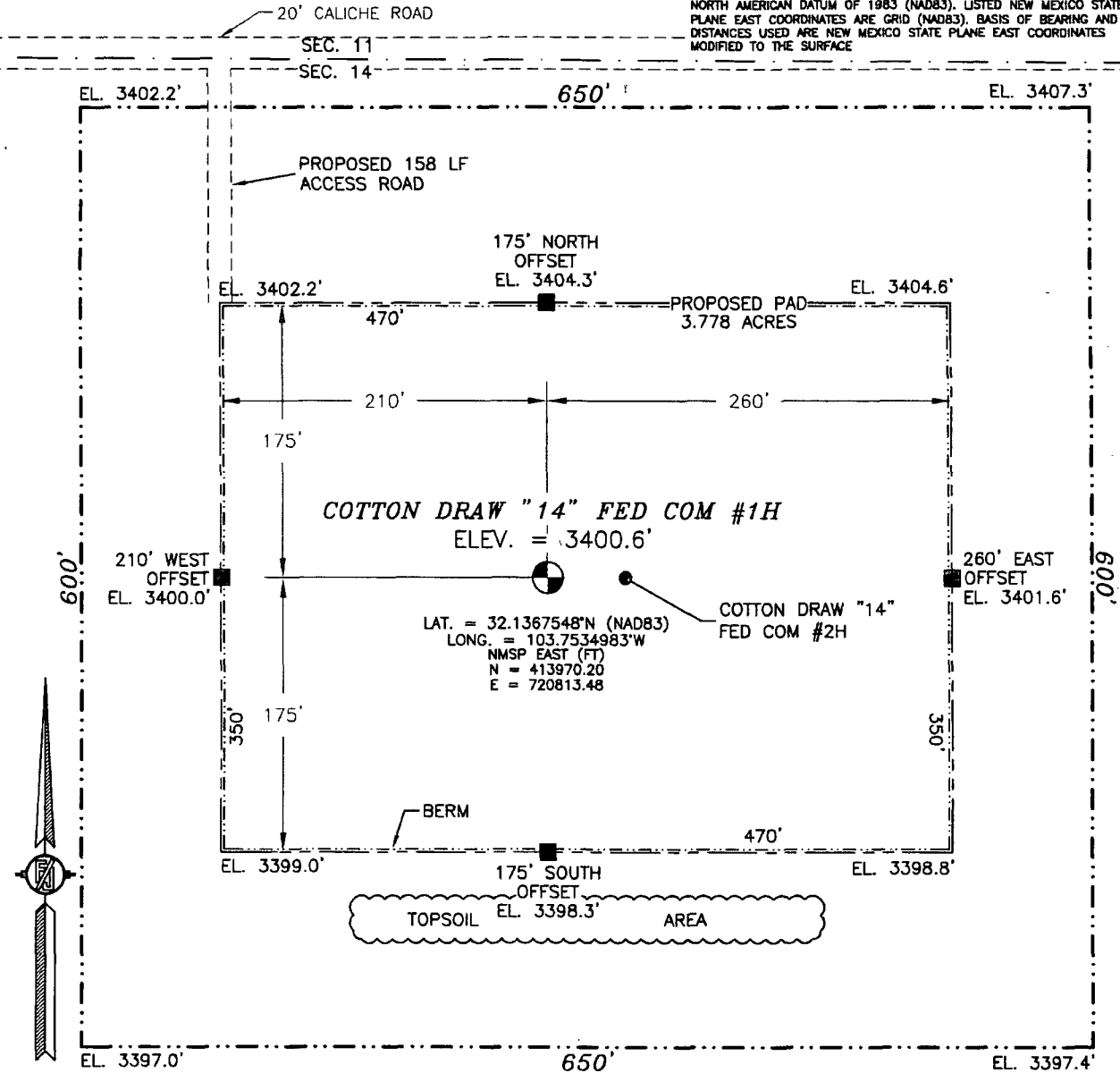
No allowable will be assigned to this completion until all interests have been consolidated or a non-standard unit has been approved by the division.

<p>S89°44'55"E 2646.89 FT</p> <p>1150'</p> <p>330'</p> <p>NW CORNER SEC. 14 DNF LAT. = 32.1376926°N LONG. = 103.7572043°W NMSP EAST (FT) N = 414305.21 E = 719664.53</p> <p>SURFACE LOCATION</p> <p>COTTON DRAW 14" FED COM #1H ELEV. = 3400.6 LAT. = 32.1367548°N (NAD83) LONG. = 103.7534983°W NMSP EAST (FT) N = 413970.20 E = 720813.48</p> <p>W Q CORNER SEC. 14 LAT. = 32.1304013°N LONG. = 103.7572709°W NMSP EAST (FT) N = 411652.64 E = 719658.11</p> <p>BOTTOM OF HOLE LAT. = 32.1240072°N LONG. = 103.7551866°W NMSP EAST (FT) N = 409330.01 E = 720315.86</p> <p>SW CORNER SEC. 14 LAT. = 32.1231182°N LONG. = 103.7573246°W NMSP EAST (FT) N = 409003.08 E = 719659.63</p> <p>S Q CORNER SEC. 14 LAT. = 32.1230451°N LONG. = 103.7486843°W NMSP EAST (FT) N = 408990.89 E = 722330.65</p> <p>SE CORNER SEC. 14 LAT. = 32.1230397°N LONG. = 103.7401304°W NMSP EAST (FT) N = 409003.37 E = 724978.78</p> <p>NOTE: LATITUDE AND LONGITUDE COORDINATES ARE SHOWN USING THE NORTH AMERICAN DATUM OF 1983 (NAD83). LISTED NEW MEXICO STATE PLANE EAST COORDINATES ARE GRID (NAD83). BASIS OF BEARING AND DISTANCES USED ARE NEW MEXICO STATE PLANE EAST COORDINATES MODIFIED TO THE SURFACE.</p>		<p>S89°44'55"E 2646.89 FT</p> <p>NE CORNER SEC. 14 LAT. = 32.1375499°N LONG. = 103.7401065°W NMSP EAST (FT) N = 414281.99 E = 724957.10</p> <p>E Q CORNER SEC. 14 LAT. = 32.1302841°N LONG. = 103.7401147°W NMSP EAST (FT) N = 411638.81 E = 724969.15</p>	
<p>500'15.40'E 2643.79 FT</p> <p>500'12.34'E 2636.03 FT</p>		<p><b>17 OPERATOR CERTIFICATION</b> I hereby certify that the information contained herein is true and complete to the best of my knowledge and belief, and that this organization either owns a working interest or unleased mineral interest in the land including the proposed bottom hole location or has a right to drill this well at this location pursuant to a contract with an owner of such a mineral or working interest, or to a voluntary pooling agreement or a compulsory pooling order heretofore entered by the division. <i>Patti Riechers</i> 12/4/13 Signature Date Patti Riechers, Regulatory Specialist Printed Name patti.riechers@dvn.com E-mail Address</p>	
<p>500'08.19'E 2653.15 FT</p> <p>500'03.13'E 2650.13 FT</p>		<p><b>18 SURVEYOR CERTIFICATION</b> I hereby certify that the well location shown on this plat was plotted from field notes of actual surveys made by me or under my supervision, and that the same is true and correct to the best of my belief. JULY 25, 2013 Date of Survey <i>Frank Jaramilla</i> Signature and Seal of Professional Surveyor Certificate Number: FRANK JARAMILLA PL 12797 NEW MEXICO LAND SURVEY NO. 2144</p>	

SECTION 14, TOWNSHIP 25 SOUTH, RANGE 31 EAST, N.M.P.M.  
EDDY COUNTY, STATE OF NEW MEXICO

SITE MAP

NOTE: LATITUDE AND LONGITUDE COORDINATES ARE SHOWN USING THE NORTH AMERICAN DATUM OF 1983 (NAD83). LISTED NEW MEXICO STATE PLANE EAST COORDINATES ARE GRID (NAD83). BASIS OF BEARING AND DISTANCES USED ARE NEW MEXICO STATE PLANE EAST COORDINATES MODIFIED TO THE SURFACE



010 50 100 200

SCALE 1" = 100'

DIRECTIONS TO LOCATION

FROM STATE HIGHWAY 128 AND CR 1 (ORLA HIGHWAY) GO SOUTH ON CR 1 6.5 MILES, TURN RIGHT ON CALICHE ROAD (MONSANTO ROAD) AND GO WEST 2.2 MILES, TURN RIGHT AND GO NORTH 0.75 MILES, BEND LEFT AND GO WEST 2.0 MILES, TURN RIGHT AND GO NORTH 0.25 MILES, TURN LEFT AND GO WEST 0.8 MILES AND LOCATION IS ON THE LEFT (SOUTH) 330'.

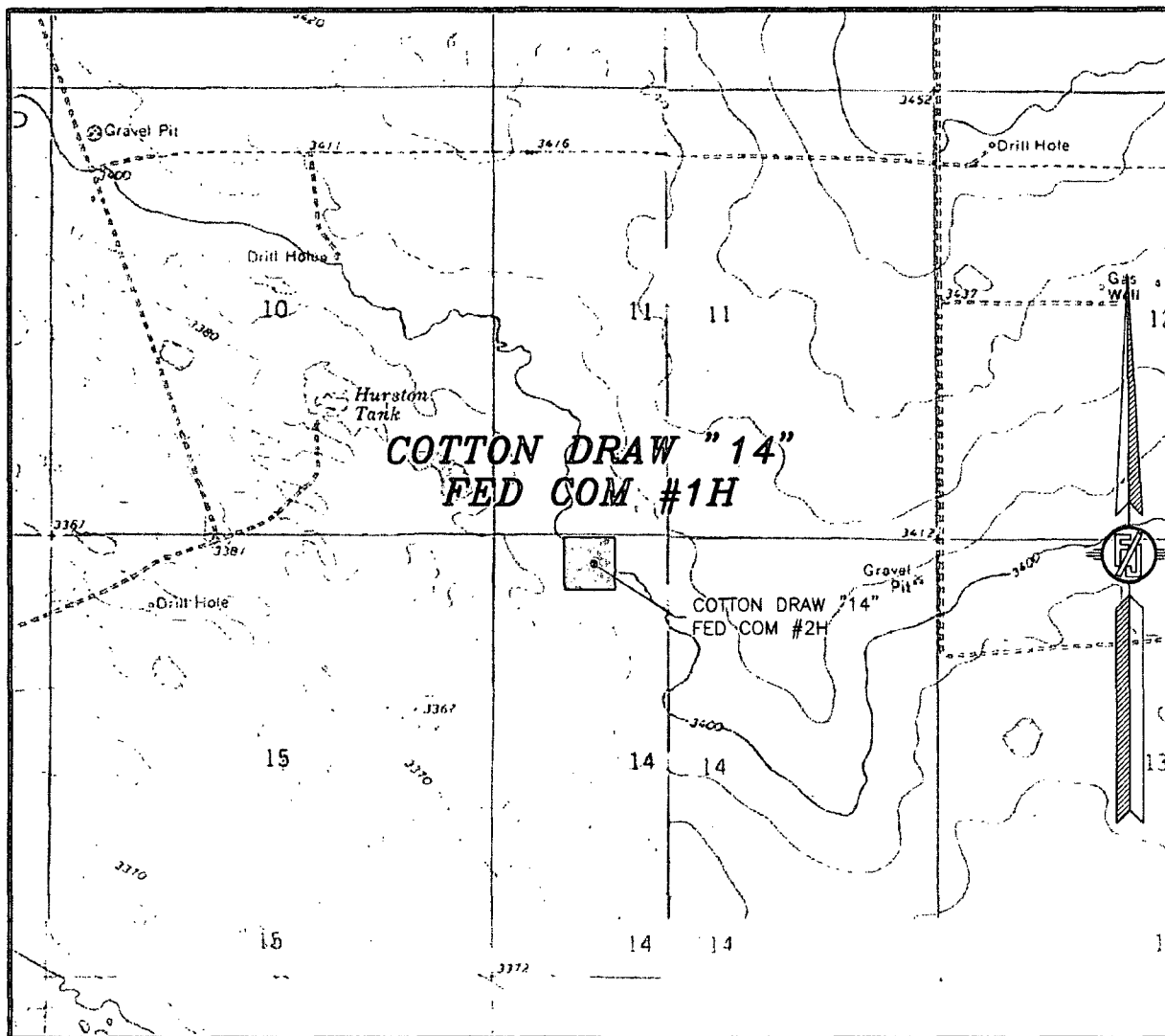
DEVON ENERGY PRODUCTION COMPANY, L.P.  
COTTON DRAW "14" FED COM #1H  
LOCATED 330 FT. FROM THE NORTH LINE  
AND 1150 FT. FROM THE WEST LINE OF  
SECTION 14, TOWNSHIP 25 SOUTH,  
RANGE 31 EAST, N.M.P.M.  
EDDY COUNTY, STATE OF NEW MEXICO

JULY 25, 2013

SURVEY NO. 2144

MADRON SURVEYING, INC. 301 SOUTH CANAL (575) 234-3341 CARLSBAD, NEW MEXICO

SECTION 14, TOWNSHIP 25 SOUTH, RANGE 31 EAST, N.M.P.M.  
 EDDY COUNTY, STATE OF NEW MEXICO  
 LOCATION VERIFICATION MAP



USGS QUAD MAP:  
 BIG SINKS

NOT TO SCALE

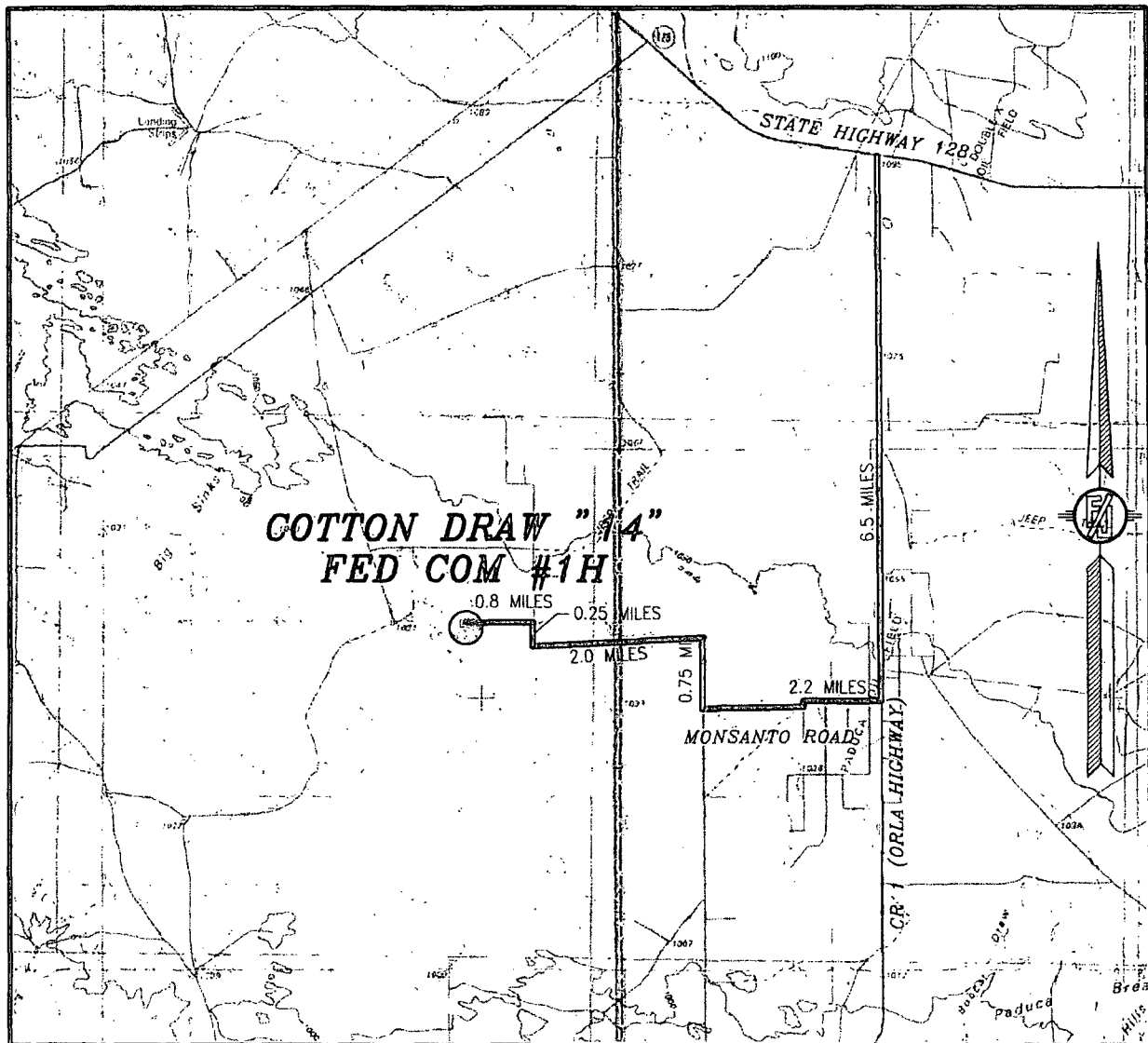
DEVON ENERGY PRODUCTION COMPANY, L.P.  
**COTTON DRAW "14" FED COM #1H**  
 LOCATED 330 FT. FROM THE NORTH LINE  
 AND 1150 FT. FROM THE WEST LINE OF  
 SECTION 14, TOWNSHIP 25 SOUTH,  
 RANGE 31 EAST, N.M.P.M.  
 EDDY COUNTY, STATE OF NEW MEXICO

JULY 25, 2013

SURVEY NO. 2144

MADRON SURVEYING, INC. 301 SOUTH CANAL (575) 234-3341 CARLSBAD, NEW MEXICO

SECTION 14, TOWNSHIP 25 SOUTH, RANGE 31 EAST, N.M.P.M.  
EDDY COUNTY, STATE OF NEW MEXICO  
VICINITY MAP



DEVON ENERGY PRODUCTION COMPANY, L.P.

**COTTON DRAW "14" FED COM #1H**  
LOCATED 330 FT. FROM THE NORTH LINE  
AND 1150 FT. FROM THE WEST LINE OF  
SECTION 14, TOWNSHIP 25 SOUTH,  
RANGE 31 EAST, N.M.P.M.  
EDDY COUNTY, STATE OF NEW MEXICO

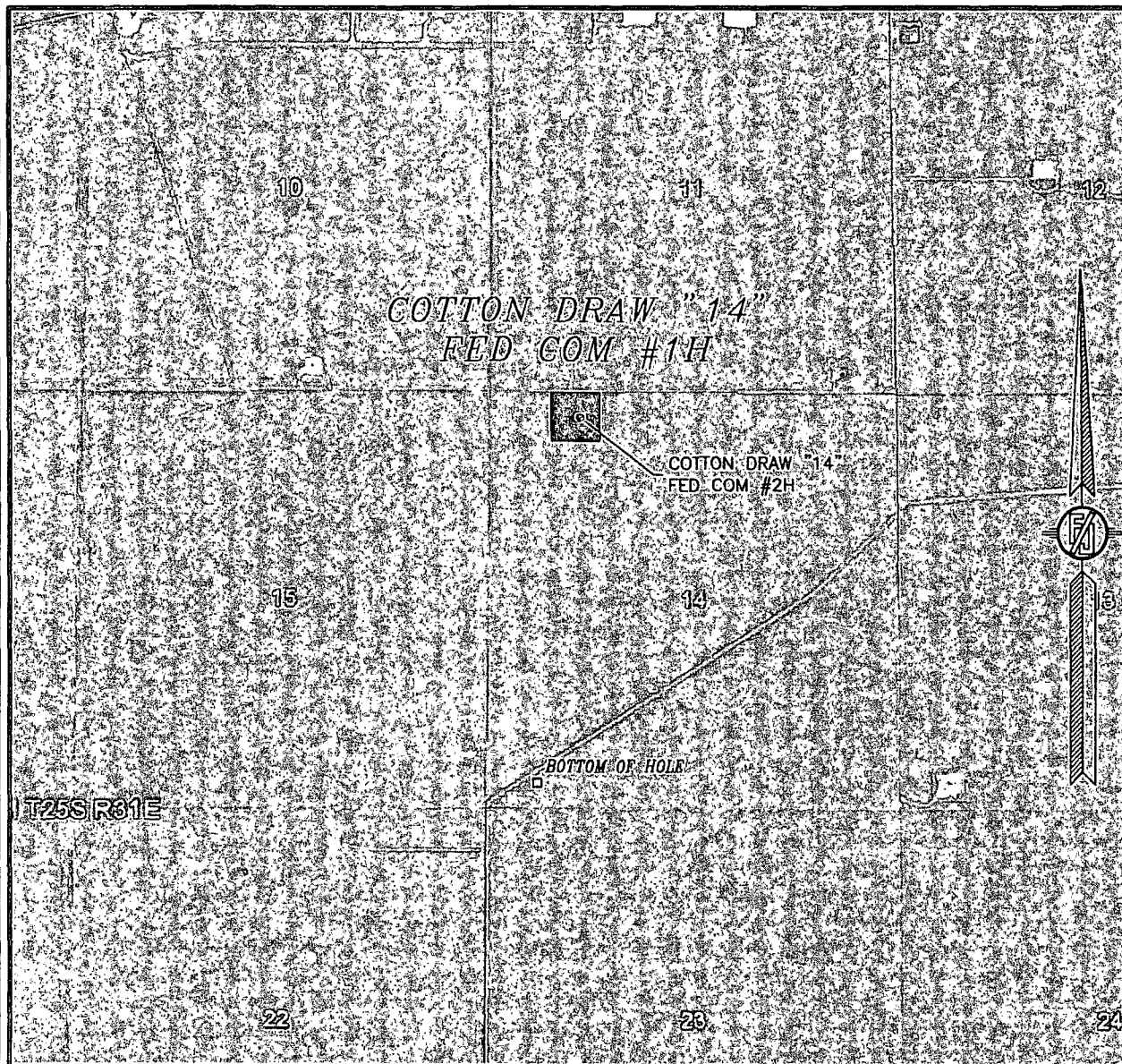
**DIRECTIONS TO LOCATION**

FROM STATE HIGHWAY 128 AND CR 1 (ORLA HIGHWAY) GO SOUTH ON  
CR 1 6.5 MILES, TURN RIGHT ON CALICHE ROAD (MONSANTO ROAD)  
AND GO WEST 2.2 MILES, TURN RIGHT AND GO NORTH 0.75 MILES,  
BEND LEFT AND GO WEST 2.0 MILES, TURN RIGHT AND GO NORTH  
0.25 MILES, TURN LEFT AND GO WEST 0.8 MILES AND LOCATION IS  
ON THE LEFT (SOUTH) 330'.

JULY 25, 2013

MADRON SURVEYING, INC. 301 SOUTH CANAL CARLSBAD, NEW MEXICO SURVEY NO. 2144  
(575) 234-3341

SECTION 14, TOWNSHIP 25 SOUTH, RANGE 31 EAST, N.M.P.M.  
EDDY COUNTY, STATE OF NEW MEXICO  
AERIAL PHOTO



NOT TO SCALE  
AERIAL PHOTO:  
GOOGLE EARTH  
APRIL 2013

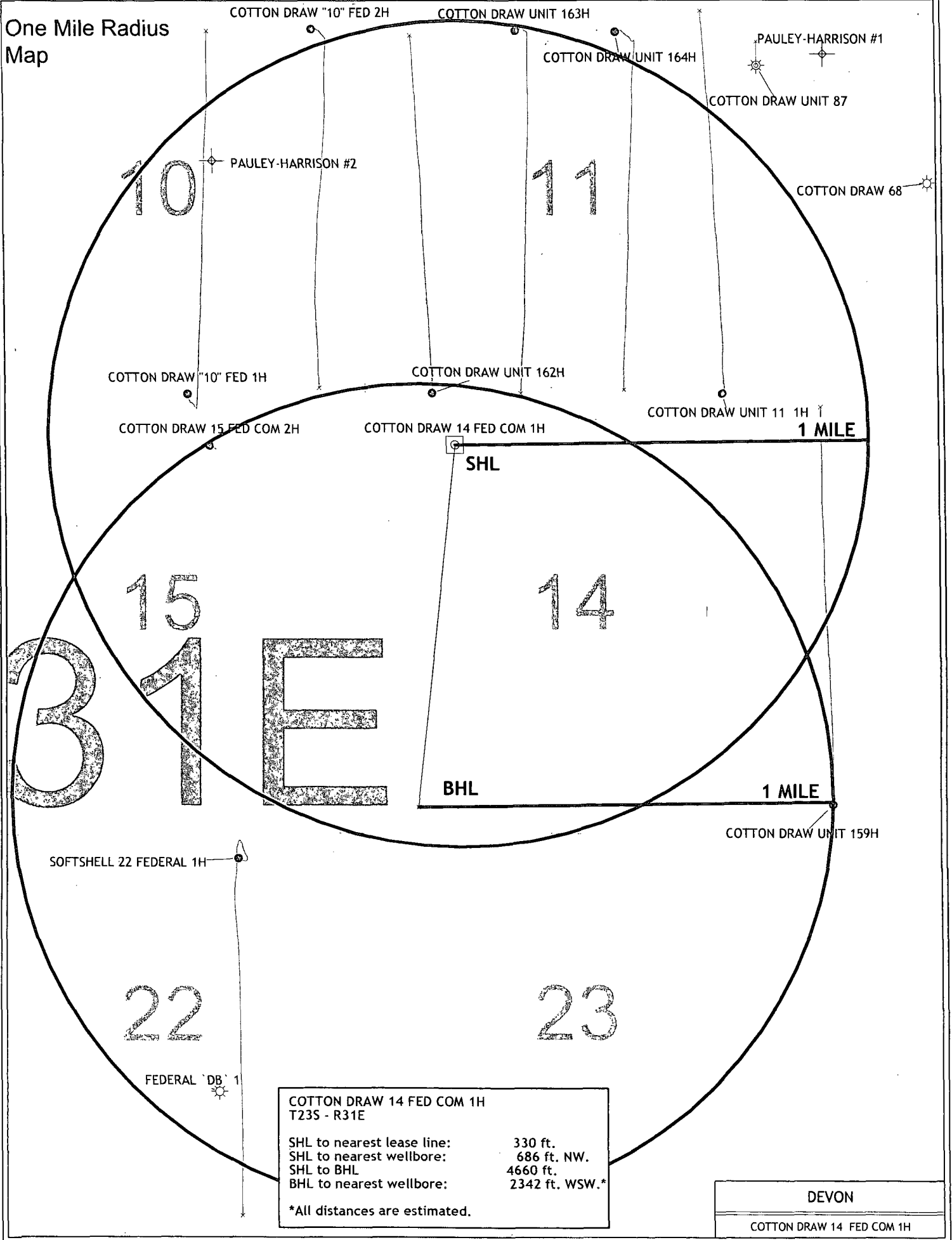
DEVON ENERGY PRODUCTION COMPANY, L.P.  
**COTTON DRAW "14" FED COM #1H**  
LOCATED 330 FT. FROM THE NORTH LINE  
AND 1150 FT. FROM THE WEST LINE OF  
SECTION 14, TOWNSHIP 25 SOUTH,  
RANGE 31 EAST, N.M.P.M.  
EDDY COUNTY, STATE OF NEW MEXICO

JULY 25, 2013

SURVEY NO. 2144

MADRON SURVEYING, INC. 301 SOUTH CANAL CARLSBAD, NEW MEXICO  
(575) 234-3341

# One Mile Radius Map



## DRILLING PROGRAM

Devon Energy Production Company, L.P.  
Cotton Draw 14 Fed Com 1H

1. Geologic Name of Surface Formation: Quaternary

2. Estimated Tops of Geological Markers & Depths of Anticipated FW, Oil, or Gas:

a. Fresh Water	350'	
b. Rustler	676'	Barren
c. Top of Salt	975'	Barren
d. Base of Salt / Lamar	4163'	Barren
e. Delaware	4386'	Oil & Gas shows
f. Bone Spring Lime	8410'	Oil & Gas shows
g. 1 <sup>st</sup> Bone Spring Sand	9318'	Oil & Gas shows
h. 2 <sup>nd</sup> Bone Spring Sand	9959'	Oil & Gas shows
Total Depth	10398' TVD	14787' MD 10625' PH

NOT  
a formation

### 3. Pressure Control Equipment:

A 5M 13-5/8" BOP system (Double Ram and Annular preventer) will be installed and tested prior to drilling out the surface casing shoe. The BOP system used to drill the intermediate hole will be tested per BLM Onshore Oil and Gas Order 2.

A 5M 13-5/8" BOP system (Double Ram and Annular preventer) will be installed and tested prior to drilling out the intermediate casing shoe. The BOP system used to drill the production hole will be tested per BLM Onshore Oil and Gas Order 2.

The pipe rams will be operated and checked each 24 hour period and each time the drill pipe is out of the hole. These tests will be logged in the daily driller's log. A 2" kill line and 3" choke line will be incorporated into the drilling spool below the ram BOP. In addition to the rams and annular preventer, additional BOP accessories include a kelly cock, floor safety valve, choke lines, and choke manifold rated at 5,000 psi WP.

*See COA* Devon requests a variance to use a flexible line with flanged ends between the BOP and the choke manifold (choke line); **if an H&P rig drills this well. Otherwise no flex line is needed.** The line will be kept as straight as possible with minimal turns.

#### Auxiliary Well Control and Monitoring Equipment:

- a. A Kelly cock will be in the drill string at all times.
- b. A full opening drill pipe stabbing valve having the appropriate connections will be on the rig floor at all times.

4. Casing Program:

See COA

Hole Size	Hole Interval	Casing OD	Casing Interval	Weight (lb/ft)	Collar	Grade	Collapse Design Factor	Burst Design Factor	Tension Design Factor
17-1/2"	0 - 870' <sup>750'</sup>	13-3/8"	0 - 870' <sup>750'</sup>	48	STC	H-40	1.77	3.98	7.71
12-1/4"	<del>870-4200'</del> <sup>4300'</sup>	9-5/8"	<del>0-4200'</del> <sup>4300'</sup>	40	LTC	J-55	1.18	1.81	3.10
8-3/4"	4200-14787'	5-1/2"	0-14787'	17	BTC	P-110	1.76	2.19	2.26

Casing Notes:

- An 8-3/4" pilot hole will be drilled to 10625' and plugged back to KOP (for volumes and TOC see cement table)
- All casing is new and API approved
- The goal of the surface casing is to protect the water zones, casing will be set a minimum of 25 feet into the Rustler Anhydrite. If Salt is encountered, casing will be set at least 25 feet above the salt.

Maximum Lateral TVD: 10398'

See COA

5. Proposed mud Circulations System:

Depth	Mud Weight	Viscosity	Fluid Loss	Type System
0-870' <sup>750'</sup>	8.4-9.0	30-34	N/C	FW
<del>870-4200'</del> <sup>4300'</sup>	9.8-10.0	28-32	N/C	Brine
4200-14787'	8.5-9.0	28-32	N/C	FW

The necessary mud products for weight addition and fluid loss control will be on location at all times. Visual mud monitoring equipment will be in place to detect volume changes indicating loss or gain of circulating fluid volume. If abnormal pressures are encountered, electronic/mechanical mud monitoring equipment will be installed.

6. Cementing Table:

String	Number of sx	Weight lbs/gal	Water Volume g/sx	Yield cf/sx	Stage; Lead/Tail	Slurry Description
Surface	940	14.8	6.32	1.33	Lead	Class C Cement + 0.125 lbs/sack Poly-E-Flake + 63.1% Fresh Water
Intermediate	870	12.9	8.82	1.85	1 <sup>st</sup> Lead	(65:35) Class C Cement: Poz (Fly Ash): 6% BWOC Bentonite + 5% BWOW Sodium Chloride + 0.125 lbs/sack Poly-E-Flake + 70.9 % Fresh Water
	430	14.8	6.45	1.33	1 <sup>st</sup> Tail	Class C Cement + 0.125 lbs/sack Poly-E-Flake + 63.9% Fresh Water
S <sup>el</sup> SA Production	620	12.5	10.79	1.95	1 <sup>st</sup> Lead	(65:35) Class H Cement: Poz (Fly Ash) + 6% BWOC Bentonite + 0.25% BWOC HR-601 + 0.125 lbs/sack Poly-E-Flake + 74.1 % Fresh Water
	1290	14.5	5.38	1.22	1 <sup>st</sup> Tail	(50:50) Class H Cement: Poz (Fly Ash) + 1 lb/sk Sodium Chloride + 0.5% bwoc HALAD-344 + 0.4% bwoc CFR-3 + 0.2% bwoc HR-601 + 2% bwoc Bentonite + 58.8% Fresh Water
	DVT @ 6000'					
	280	12.5	10.79	1.95	2 <sup>nd</sup> Lead	(65:35) Class H Cement: Poz (Fly Ash) + 6% BWOC Bentonite + 0.25% BWOC HR-601 + 0.125 lbs/sack Poly-E-Flake + 74.1 % Fresh Water
	120	14.8	6.34	1.33	2 <sup>nd</sup> Tail	Class C Cement + 0.2% BWOC HR-800 + 64.4% Fresh Water
PH Plug	390	15.6	5.39	1.19	Lead	Class H Cement + 0.2% Halad-9 + 0.4% HR-601 + 60.5 % Fresh Water

TOC for all Strings:

Surface @ 0'  
Intermediate @ 0'  
Production @ 3700' S<sup>el</sup> SA

Notes:

- Cement volumes Surface 100%, Intermediate 75%, Production based on at least 25% excess
- Actual cement volumes will be adjusted based on fluid caliper and caliper log data

**7. Logging, Coring, and Testing Program:**

- a. Drill stem tests will be based on geological sample shows.
- b. If a drill stem test is anticipated, a procedure, equipment to be used, and safety measures will be provided via sundry notice to the BLM.
- c. The open hole electrical logging program will be:
  - i. Total Depth to Intermediate:
    - No logs will be run
  - ii. Total Depth to Surface:
    - CBL
  - iii. No coring program is planned
  - iv. Additional Testing will be initiated subsequent to setting the 5-1/2" production casing. Specific intervals will be targeted based on log evaluation, geological sample shows, and drill stem tests.

**8. Potential Hazards:**

- Self  
COA*
- a. No abnormal pressures or temperatures are expected. There is no known presence of H<sub>2</sub>S in this area, and none is anticipated to be encountered. If H<sub>2</sub>S is encountered the operator will comply with the provisions of Onshore Oil and Gas Order No. 6. No lost circulation is expected to occur. All personnel will be familiar with all aspects of safe operation being used to drill this well. Estimated BHP: 4375 psi, and estimated BHT: 155 degrees.
  - b. Hydrogen Sulfide detection equipment will be in operation after drilling out the 13-3/8" casing shoe until the 5-1/2" casing is cemented. Breathing equipment will be on location upon drilling the 13-3/8" shoe until total depth is reached.

**9. Anticipated Starting Date and Duration of Operations:**

- a. Road and location construction will begin after the BLM has approved the APD. Anticipated spud date will be as soon after BLM approval and as soon as a rig will be available. Move in operations and drilling is expected to take 32 days. If production casing is run then an additional 30 days will be needed to complete well and construct surface facilities and/or lay flow lines in order to place well on production.



# Devon Energy

Location: Eddy County, NM

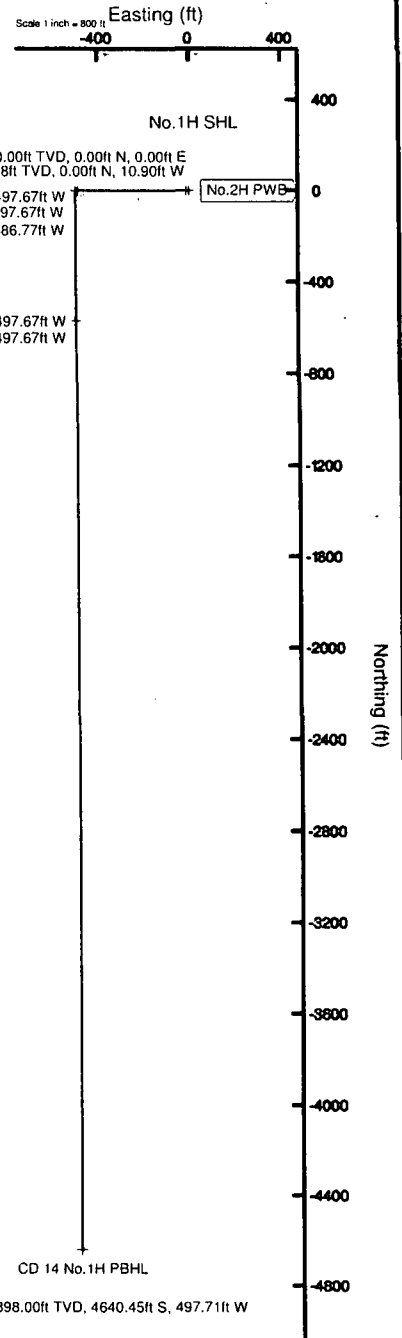
Field: (Cotton) Sec 10, T25S, R31E

Facility: Cotton Draw 14 Fed Com No. 1H & No. 2H

Slot: No. 1H SHL

Well: No. 1H

Wellbore: No. 1H PWB

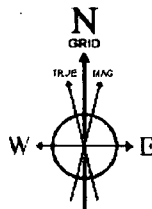


Well Profile Data

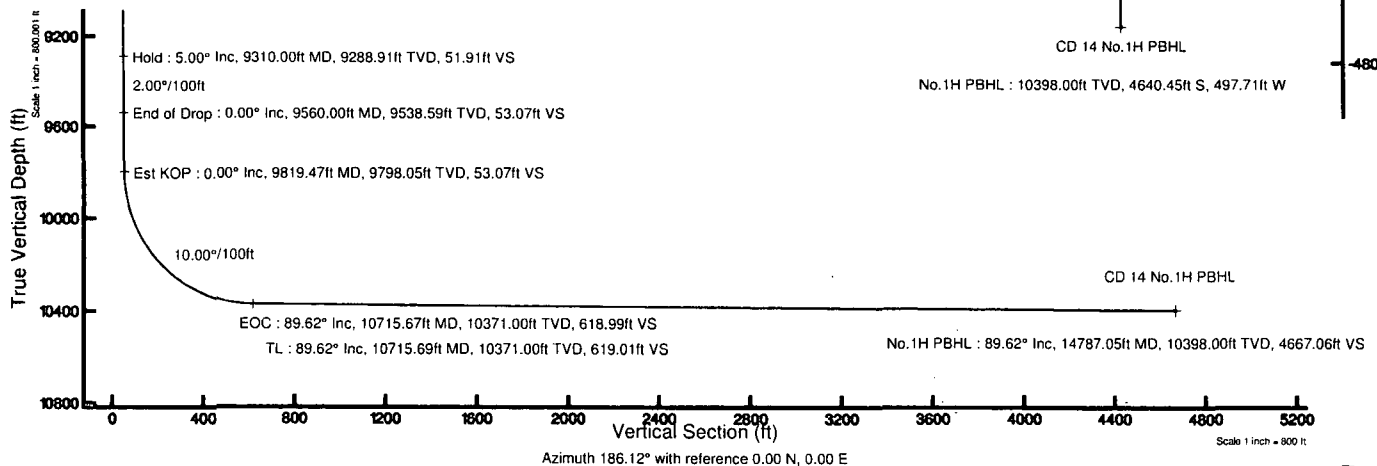
Design Comment	MD (ft)	Inc (")	Az (°)	TVD (ft)	Local N (ft)	Local E (ft)	DLS (°/100ft)	VS (ft)
Tie On	28.00	0.000	270.000	28.00	0.00	0.00	0.00	0.00
Nudge	3600.00	0.000	270.000	3600.00	0.00	0.00	0.00	0.00
EOB	3850.00	5.000	270.000	3849.68	0.00	-10.90	2.00	1.16
Hold	9310.00	5.000	270.000	9288.91	0.00	-486.77	0.00	51.91
End of Drop	9560.00	0.000	180.000	9538.59	0.00	-497.67	2.00	53.07
Est KOP	9819.47	0.000	180.000	9798.05	0.00	-497.67	0.00	53.07
EOC	10715.67	89.620	180.000	10371.00	-569.16	-497.67	10.00	618.99
TL	10715.69	89.620	180.000	10371.00	-569.18	-497.67	2.00	619.01
No. 1H PBHL	14787.05	89.620	180.000	10398.00	-4640.45	-497.71	0.00	4667.06

Plot reference wellpath is Rev-A.0

True vertical depths are referenced to Rig on No. 1H SHL (KB)	Grid System: NAD83 / TM New Mexico SP, Eastern Zone (3031), US feet
Measured depths are referenced to Rig on No. 1H SHL (KB)	North Reference: Grid north
Rig on No. 1H SHL (KB) to Mean Sea Level: 3428.6 feet	Scale: True distance
Mean Sea Level to Mud line (At Slot: No. 1H SHL): -3400.6 feet	Depths are in feet
Coordinates are in feet referenced to Slot	Created by: genibry on 10/28/2013



BGGM (1945.0 to 2015.0) Dip: 60.00° Field: 48290.9 nT  
Magnetic North is 7.48 degrees East of True North (at 10/28/2013)  
Grid North is 0.31 degrees East of True North  
To correct azimuth from True to Grid subtract 0.31 degrees  
To correct azimuth from Magnetic to Grid add 7.17 degrees



Rev-A.0



# Planned Wellpath Report

Rev-A.0

Page 1 of 6



REFERENCE WELLPATH IDENTIFICATION			
Operator	Devon Energy	Slot	No.1H SHL
Area	Eddy County, NM	Well	No.1H
Field	(Cotton) Sec 10, T25S, R31E	Wellbore	No.1H PWB
Facility	Cotton Draw 14 Fed Com No.1H & No.2H		

REPORT SETUP INFORMATION			
Projection System	NAD83 / TM New Mexico SP, Eastern Zone (3001), US feet	Software System	WellArchitect® 4.0.1
North Reference	Grid	User	Gentbry
Scale	0.999946	Report Generated	10/28/2013 at 2:21:26 PM
Convergence at slot	0.31° East	Database/Source file	MidlandDB/No.1H_PWB.xml

WELLPATH LOCATION						
	Local coordinates		Grid coordinates		Geographic coordinates	
	North[ft]	East[ft]	Easting[US ft]	Northing[US ft]	Latitude	Longitude
Slot Location	0.00	0.00	720813.48	413970.20	32°08'12.317"N	103°45'12.594"W
Facility Reference Pt			720813.48	413970.20	32°08'12.317"N	103°45'12.594"W
Field Reference Pt			718969.84	419273.98	32°09'04.900"N	103°45'33.707"W

WELLPATH DATUM			
Calculation method	Minimum curvature	Rig on No.1H SHL (KB) to Facility Vertical Datum	28.00ft
Horizontal Reference Pt	Slot	Rig on No.1H SHL (KB) to Mean Sea Level	3428.60ft
Vertical Reference Pt	Rig on No.1H SHL (KB)	Rig on No.1H SHL (KB) to Mud Line at Slot (No.1H SHL)	28.00ft
MD Reference Pt	Rig on No.1H SHL (KB)	Section Origin	N 0.00, E 0.00 ft
Field Vertical Reference	Mean Sea Level	Section Azimuth	186.12°



# Planned Wellpath Report

Rev-A.0

Page 2 of 6



REFERENCE WELLPATH IDENTIFICATION			
Operator	Devon Energy	Slot	No.1H SHL
Area	Eddy County, NM	Well	No.1H
Field	(Cotton) Sec 10, T25S, R31E	Wellbore	No.1H PWB
Facility	Cotton Draw 14 Fed Com No.1H & No.2H		

WELLPATH DATA (164 stations)      = interpolated/extrapolated station												
MD [ft]	Inclination [°]	Azimuth [°]	TVD [ft]	Vert Sect [ft]	North [ft]	East [ft]	Grid East [US ft]	Grid North [US ft]	Latitude	Longitude	DLS [°/100ft]	Comments
0.00+	0.000	270.000	0.00	0.00	0.00	0.00	720813.48	413970.20	32°08'12.317"N	103°45'12.594"W	0.00	
28.00	0.000	270.000	28.00	0.00	0.00	0.00	720813.48	413970.20	32°08'12.317"N	103°45'12.594"W	0.00	Tie On
128.00+	0.000	270.000	128.00	0.00	0.00	0.00	720813.48	413970.20	32°08'12.317"N	103°45'12.594"W	0.00	
228.00+	0.000	270.000	228.00	0.00	0.00	0.00	720813.48	413970.20	32°08'12.317"N	103°45'12.594"W	0.00	
328.00+	0.000	270.000	328.00	0.00	0.00	0.00	720813.48	413970.20	32°08'12.317"N	103°45'12.594"W	0.00	
428.00+	0.000	270.000	428.00	0.00	0.00	0.00	720813.48	413970.20	32°08'12.317"N	103°45'12.594"W	0.00	
528.00+	0.000	270.000	528.00	0.00	0.00	0.00	720813.48	413970.20	32°08'12.317"N	103°45'12.594"W	0.00	
628.00+	0.000	270.000	628.00	0.00	0.00	0.00	720813.48	413970.20	32°08'12.317"N	103°45'12.594"W	0.00	
676.00+	0.000	270.000	676.00	0.00	0.00	0.00	720813.48	413970.20	32°08'12.317"N	103°45'12.594"W	0.00	Rustler
728.00+	0.000	270.000	728.00	0.00	0.00	0.00	720813.48	413970.20	32°08'12.317"N	103°45'12.594"W	0.00	
828.00+	0.000	270.000	828.00	0.00	0.00	0.00	720813.48	413970.20	32°08'12.317"N	103°45'12.594"W	0.00	
928.00+	0.000	270.000	928.00	0.00	0.00	0.00	720813.48	413970.20	32°08'12.317"N	103°45'12.594"W	0.00	
975.00+	0.000	270.000	975.00	0.00	0.00	0.00	720813.48	413970.20	32°08'12.317"N	103°45'12.594"W	0.00	Top Salt
1028.00+	0.000	270.000	1028.00	0.00	0.00	0.00	720813.48	413970.20	32°08'12.317"N	103°45'12.594"W	0.00	
1128.00+	0.000	270.000	1128.00	0.00	0.00	0.00	720813.48	413970.20	32°08'12.317"N	103°45'12.594"W	0.00	
1228.00+	0.000	270.000	1228.00	0.00	0.00	0.00	720813.48	413970.20	32°08'12.317"N	103°45'12.594"W	0.00	
1328.00+	0.000	270.000	1328.00	0.00	0.00	0.00	720813.48	413970.20	32°08'12.317"N	103°45'12.594"W	0.00	
1428.00+	0.000	270.000	1428.00	0.00	0.00	0.00	720813.48	413970.20	32°08'12.317"N	103°45'12.594"W	0.00	
1528.00+	0.000	270.000	1528.00	0.00	0.00	0.00	720813.48	413970.20	32°08'12.317"N	103°45'12.594"W	0.00	
1628.00+	0.000	270.000	1628.00	0.00	0.00	0.00	720813.48	413970.20	32°08'12.317"N	103°45'12.594"W	0.00	
1728.00+	0.000	270.000	1728.00	0.00	0.00	0.00	720813.48	413970.20	32°08'12.317"N	103°45'12.594"W	0.00	
1828.00+	0.000	270.000	1828.00	0.00	0.00	0.00	720813.48	413970.20	32°08'12.317"N	103°45'12.594"W	0.00	
1928.00+	0.000	270.000	1928.00	0.00	0.00	0.00	720813.48	413970.20	32°08'12.317"N	103°45'12.594"W	0.00	
2028.00+	0.000	270.000	2028.00	0.00	0.00	0.00	720813.48	413970.20	32°08'12.317"N	103°45'12.594"W	0.00	
2128.00+	0.000	270.000	2128.00	0.00	0.00	0.00	720813.48	413970.20	32°08'12.317"N	103°45'12.594"W	0.00	
2228.00+	0.000	270.000	2228.00	0.00	0.00	0.00	720813.48	413970.20	32°08'12.317"N	103°45'12.594"W	0.00	
2328.00+	0.000	270.000	2328.00	0.00	0.00	0.00	720813.48	413970.20	32°08'12.317"N	103°45'12.594"W	0.00	
2428.00+	0.000	270.000	2428.00	0.00	0.00	0.00	720813.48	413970.20	32°08'12.317"N	103°45'12.594"W	0.00	
2528.00+	0.000	270.000	2528.00	0.00	0.00	0.00	720813.48	413970.20	32°08'12.317"N	103°45'12.594"W	0.00	
2628.00+	0.000	270.000	2628.00	0.00	0.00	0.00	720813.48	413970.20	32°08'12.317"N	103°45'12.594"W	0.00	
2728.00+	0.000	270.000	2728.00	0.00	0.00	0.00	720813.48	413970.20	32°08'12.317"N	103°45'12.594"W	0.00	
2828.00+	0.000	270.000	2828.00	0.00	0.00	0.00	720813.48	413970.20	32°08'12.317"N	103°45'12.594"W	0.00	
2928.00+	0.000	270.000	2928.00	0.00	0.00	0.00	720813.48	413970.20	32°08'12.317"N	103°45'12.594"W	0.00	
3028.00+	0.000	270.000	3028.00	0.00	0.00	0.00	720813.48	413970.20	32°08'12.317"N	103°45'12.594"W	0.00	
3128.00+	0.000	270.000	3128.00	0.00	0.00	0.00	720813.48	413970.20	32°08'12.317"N	103°45'12.594"W	0.00	
3228.00+	0.000	270.000	3228.00	0.00	0.00	0.00	720813.48	413970.20	32°08'12.317"N	103°45'12.594"W	0.00	
3328.00+	0.000	270.000	3328.00	0.00	0.00	0.00	720813.48	413970.20	32°08'12.317"N	103°45'12.594"W	0.00	
3428.00+	0.000	270.000	3428.00	0.00	0.00	0.00	720813.48	413970.20	32°08'12.317"N	103°45'12.594"W	0.00	
3528.00+	0.000	270.000	3528.00	0.00	0.00	0.00	720813.48	413970.20	32°08'12.317"N	103°45'12.594"W	0.00	
3600.00+	0.000	270.000	3600.00	0.00	0.00	0.00	720813.48	413970.20	32°08'12.317"N	103°45'12.594"W	0.00	Nudge
3628.00+	0.560	270.000	3628.00	0.01	0.00	-0.14	720813.34	413970.20	32°08'12.317"N	103°45'12.596"W	2.00	
3728.00+	2.560	270.000	3727.96	0.30	0.00	-2.86	720810.62	413970.20	32°08'12.318"N	103°45'12.627"W	2.00	
3828.00+	4.560	270.000	3827.76	0.97	0.00	-9.07	720804.41	413970.20	32°08'12.318"N	103°45'12.699"W	2.00	
3850.00	5.000	270.000	3849.68	1.16	0.00	-10.90	720802.58	413970.20	32°08'12.318"N	103°45'12.721"W	2.00	EOB
3928.00+	5.000	270.000	3927.39	1.89	0.00	-17.70	720795.78	413970.20	32°08'12.318"N	103°45'12.800"W	0.00	



# Planned Wellpath Report

Rev-A.0

Page 3 of 6



## REFERENCE WELLPATH IDENTIFICATION

Operator	Devon Energy	Slot	No.1H SHL
Area	Eddy County, NM	Well	No.1H
Field	(Cotton) Sec 10, T25S, R31E	Wellbore	No.1H PWB
Facility	Cotton Draw 14 Fed Com No.1H & No.2H		

## WELLPATH DATA (164 stations) † = interpolated/extrapolated station

MD [ft]	Inclination [°]	Azimuth [°]	TVD [ft]	Vert Sect [ft]	North [ft]	East [ft]	Grid East [US ft]	Grid North [US ft]	Latitude	Longitude	DLS [°/100ft]	Comments
4028.00†	5.000	270.000	4027.01	2.82	0.00	-26.42	720787.07	413970.20	32°08'12.319"N	103°45'12.901"W	0.00	
4128.00†	5.000	270.000	4126.62	3.75	0.00	-35.13	720778.35	413970.20	32°08'12.319"N	103°45'13.002"W	0.00	
4164.51†	5.000	270.000	4163.00	4.09	0.00	-38.31	720775.17	413970.20	32°08'12.319"N	103°45'13.040"W	0.00	Base Salt
4228.00†	5.000	270.000	4226.24	4.68	0.00	-43.85	720769.64	413970.20	32°08'12.320"N	103°45'13.104"W	0.00	
4328.00†	5.000	270.000	4325.86	5.61	0.00	-52.56	720760.92	413970.20	32°08'12.320"N	103°45'13.205"W	0.00	
4388.37†	5.000	270.000	4386.00	6.17	0.00	-57.82	720755.66	413970.20	32°08'12.320"N	103°45'13.266"W	0.00	Delaware
4428.00†	5.000	270.000	4425.48	6.53	0.00	-61.28	720752.21	413970.20	32°08'12.321"N	103°45'13.307"W	0.00	
4528.00†	5.000	270.000	4525.10	7.46	0.00	-69.99	720743.49	413970.20	32°08'12.321"N	103°45'13.408"W	0.00	
4628.00†	5.000	270.000	4624.72	8.39	0.00	-78.71	720734.78	413970.20	32°08'12.322"N	103°45'13.509"W	0.00	
4728.00†	5.000	270.000	4724.34	9.32	0.00	-87.42	720726.06	413970.20	32°08'12.322"N	103°45'13.611"W	0.00	
4828.00†	5.000	270.000	4823.96	10.25	0.00	-96.14	720717.35	413970.20	32°08'12.322"N	103°45'13.712"W	0.00	
4928.00†	5.000	270.000	4923.58	11.18	0.00	-104.86	720708.63	413970.20	32°08'12.323"N	103°45'13.813"W	0.00	
5028.00†	5.000	270.000	5023.20	12.11	0.00	-113.57	720699.92	413970.20	32°08'12.323"N	103°45'13.915"W	0.00	
5128.00†	5.000	270.000	5122.82	13.04	0.00	-122.29	720691.20	413970.20	32°08'12.324"N	103°45'14.016"W	0.00	
5228.00†	5.000	270.000	5222.44	13.97	0.00	-131.00	720682.49	413970.20	32°08'12.324"N	103°45'14.117"W	0.00	
5328.00†	5.000	270.000	5322.06	14.90	0.00	-139.72	720673.77	413970.20	32°08'12.325"N	103°45'14.219"W	0.00	
5428.00†	5.000	270.000	5421.68	15.83	0.00	-148.43	720665.06	413970.20	32°08'12.325"N	103°45'14.320"W	0.00	
5528.00†	5.000	270.000	5521.30	16.76	0.00	-157.15	720656.34	413970.20	32°08'12.326"N	103°45'14.421"W	0.00	
5628.00†	5.000	270.000	5620.92	17.69	0.00	-165.86	720647.62	413970.20	32°08'12.326"N	103°45'14.523"W	0.00	
5728.00†	5.000	270.000	5720.54	18.62	0.00	-174.58	720638.91	413970.20	32°08'12.327"N	103°45'14.624"W	0.00	
5828.00†	5.000	270.000	5820.16	19.55	0.00	-183.30	720630.19	413970.20	32°08'12.327"N	103°45'14.726"W	0.00	
5928.00†	5.000	270.000	5919.78	20.48	0.00	-192.01	720621.48	413970.20	32°08'12.328"N	103°45'14.827"W	0.00	
6028.00†	5.000	270.000	6019.39	21.41	0.00	-200.73	720612.76	413970.20	32°08'12.328"N	103°45'14.928"W	0.00	
6128.00†	5.000	270.000	6119.01	22.34	0.00	-209.44	720604.05	413970.20	32°08'12.329"N	103°45'15.030"W	0.00	
6228.00†	5.000	270.000	6218.63	23.26	0.00	-218.16	720595.33	413970.20	32°08'12.329"N	103°45'15.131"W	0.00	
6328.00†	5.000	270.000	6318.25	24.19	0.00	-226.87	720586.62	413970.20	32°08'12.329"N	103°45'15.232"W	0.00	
6428.00†	5.000	270.000	6417.87	25.12	0.00	-235.59	720577.90	413970.20	32°08'12.330"N	103°45'15.334"W	0.00	
6528.00†	5.000	270.000	6517.49	26.05	0.00	-244.30	720569.19	413970.20	32°08'12.330"N	103°45'15.435"W	0.00	
6628.00†	5.000	270.000	6617.11	26.98	0.00	-253.02	720560.47	413970.20	32°08'12.331"N	103°45'15.536"W	0.00	
6728.00†	5.000	270.000	6716.73	27.91	0.00	-261.74	720551.76	413970.20	32°08'12.331"N	103°45'15.638"W	0.00	
6828.00†	5.000	270.000	6816.35	28.84	0.00	-270.45	720543.04	413970.20	32°08'12.332"N	103°45'15.739"W	0.00	
6928.00†	5.000	270.000	6915.97	29.77	0.00	-279.17	720534.33	413970.20	32°08'12.332"N	103°45'15.840"W	0.00	
7028.00†	5.000	270.000	7015.59	30.70	0.00	-287.88	720525.61	413970.20	32°08'12.333"N	103°45'15.942"W	0.00	
7128.00†	5.000	270.000	7115.21	31.63	0.00	-296.60	720516.90	413970.20	32°08'12.333"N	103°45'16.043"W	0.00	
7228.00†	5.000	270.000	7214.83	32.56	0.00	-305.31	720508.18	413970.20	32°08'12.334"N	103°45'16.145"W	0.00	
7328.00†	5.000	270.000	7314.45	33.49	0.00	-314.03	720499.47	413970.20	32°08'12.334"N	103°45'16.246"W	0.00	
7428.00†	5.000	270.000	7414.07	34.42	0.00	-322.74	720490.75	413970.20	32°08'12.335"N	103°45'16.347"W	0.00	
7528.00†	5.000	270.000	7513.69	35.35	0.00	-331.46	720482.04	413970.20	32°08'12.335"N	103°45'16.449"W	0.00	
7628.00†	5.000	270.000	7613.31	36.28	0.00	-340.18	720473.32	413970.20	32°08'12.335"N	103°45'16.550"W	0.00	
7728.00†	5.000	270.000	7712.93	37.21	0.00	-348.89	720464.61	413970.20	32°08'12.336"N	103°45'16.651"W	0.00	
7828.00†	5.000	270.000	7812.55	38.14	0.00	-357.61	720455.89	413970.20	32°08'12.336"N	103°45'16.753"W	0.00	
7928.00†	5.000	270.000	7912.16	39.07	0.00	-366.32	720447.18	413970.20	32°08'12.337"N	103°45'16.854"W	0.00	
8028.00†	5.000	270.000	8011.78	40.00	0.00	-375.04	720438.46	413970.20	32°08'12.337"N	103°45'16.955"W	0.00	
8128.00†	5.000	270.000	8111.40	40.92	0.00	-383.75	720429.75	413970.20	32°08'12.338"N	103°45'17.057"W	0.00	
8228.00†	5.000	270.000	8211.02	41.85	0.00	-392.47	720421.03	413970.20	32°08'12.338"N	103°45'17.158"W	0.00	



# Planned Wellpath Report

Rev-A.0

Page 4 of 6



REFERENCE WELLPATH IDENTIFICATION			
Operator	Devon Energy	Slot	No.1H SHL
Area	Eddy County, NM	Well	No.1H
Field	(Cotton) Sec 10, T2S, R31E	Wellbore	No.1H PWB
Facility	Cotton Draw 14 Fed Com No.1H & No.2H		

WELLPATH DATA (164 stations) † = interpolated/extrapolated station												
MD [ft]	Inclination [°]	Azimuth [°]	TVD [ft]	Vert Sect [ft]	North [ft]	East [ft]	Grid East [US ft]	Grid North [US ft]	Latitude	Longitude	DLS [°/100ft]	Comments
8328.00†	5.000	270.000	8310.64	42.78	0.00	-401.18	720412.32	413970.20	32°08'12.339"N	103°45'17.259"W	0.00	
8427.74†	5.000	270.000	8410.00	43.71	0.00	-409.88	720403.63	413970.20	32°08'12.339"N	103°45'17.361"W	0.00	Bone Spring Lime
8428.00†	5.000	270.000	8410.26	43.71	0.00	-409.90	720403.60	413970.20	32°08'12.339"N	103°45'17.361"W	0.00	
8528.00†	5.000	270.000	8509.88	44.64	0.00	-418.62	720394.89	413970.20	32°08'12.340"N	103°45'17.462"W	0.00	
8628.00†	5.000	270.000	8609.50	45.57	0.00	-427.33	720386.17	413970.20	32°08'12.340"N	103°45'17.564"W	0.00	
8728.00†	5.000	270.000	8709.12	46.50	0.00	-436.05	720377.46	413970.20	32°08'12.341"N	103°45'17.665"W	0.00	
8828.00†	5.000	270.000	8808.74	47.43	0.00	-444.76	720368.74	413970.20	32°08'12.341"N	103°45'17.766"W	0.00	
8928.00†	5.000	270.000	8908.36	48.36	0.00	-453.48	720360.03	413970.20	32°08'12.341"N	103°45'17.868"W	0.00	
9028.00†	5.000	270.000	9007.98	49.29	0.00	-462.19	720351.31	413970.20	32°08'12.342"N	103°45'17.969"W	0.00	
9128.00†	5.000	270.000	9107.60	50.22	0.00	-470.91	720342.60	413970.20	32°08'12.342"N	103°45'18.070"W	0.00	
9228.00†	5.000	270.000	9207.22	51.15	0.00	-479.62	720333.88	413970.20	32°08'12.343"N	103°45'18.172"W	0.00	
9310.00	5.000	270.000	9288.91	51.91	0.00	-486.77	720326.74	413970.20	32°08'12.343"N	103°45'18.255"W	0.00	Hold
9328.00†	4.640	270.000	9306.84	52.07	0.00	-488.28	720325.22	413970.20	32°08'12.343"N	103°45'18.272"W	2.00	
9339.19†	4.416	270.000	9318.00	52.17	0.00	-489.17	720324.34	413970.20	32°08'12.343"N	103°45'18.283"W	2.00	1st Bone Spring Sand
9428.00†	2.640	270.000	9406.64	52.75	0.00	-494.63	720318.88	413970.20	32°08'12.344"N	103°45'18.346"W	2.00	
9528.00†	0.640	270.000	9506.59	53.05	0.00	-497.49	720316.01	413970.20	32°08'12.344"N	103°45'18.380"W	2.00	
9560.00	0.000	180.000	9538.59	53.07	0.00	-497.67	720315.83	413970.20	32°08'12.344"N	103°45'18.382"W	2.00	End of Drop
9628.00†	0.000	180.000	9606.59	53.07	0.00	-497.67	720315.83	413970.20	32°08'12.344"N	103°45'18.382"W	0.00	
9728.00†	0.000	180.000	9706.59	53.07	0.00	-497.67	720315.83	413970.20	32°08'12.344"N	103°45'18.382"W	0.00	
9819.47	0.000	180.000	9798.05	53.07	0.00	-497.67	720315.83	413970.20	32°08'12.344"N	103°45'18.382"W	0.00	Est KOP
9828.00†	0.853	180.000	9806.59	53.14	-0.06	-497.67	720315.83	413970.14	32°08'12.343"N	103°45'18.382"W	10.00	
9928.00†	10.853	180.000	9905.94	63.26	-10.25	-497.67	720315.83	413959.95	32°08'12.242"N	103°45'18.382"W	10.00	
9982.61†	16.314	180.000	9959.00	76.01	-23.07	-497.67	720315.83	413947.13	32°08'12.116"N	103°45'18.383"W	10.00	2nd Bone spring Sand
10028.00†	20.853	180.000	10002.02	90.39	-37.53	-497.67	720315.83	413932.67	32°08'11.972"N	103°45'18.384"W	10.00	
10128.00†	30.853	180.000	10091.89	133.69	-81.08	-497.67	720315.83	413889.12	32°08'11.542"N	103°45'18.387"W	10.00	
10228.00†	40.853	180.000	10172.84	191.86	-139.58	-497.67	720315.83	413830.63	32°08'10.963"N	103°45'18.390"W	10.00	
10328.00†	50.853	180.000	10242.40	263.11	-211.25	-497.67	720315.83	413758.97	32°08'10.254"N	103°45'18.395"W	10.00	
10428.00†	60.853	180.000	10298.46	345.30	-293.90	-497.67	720315.83	413676.32	32°08'09.436"N	103°45'18.400"W	10.00	
10528.00†	70.853	180.000	10339.32	435.91	-385.04	-497.67	720315.83	413585.19	32°08'08.534"N	103°45'18.406"W	10.00	
10628.00†	80.853	180.000	10363.73	532.20	-481.88	-497.67	720315.83	413488.35	32°08'07.576"N	103°45'18.412"W	10.00	
10715.67	89.620	180.000	10371.00	618.99	-569.16	-497.67	720315.83	413401.07	32°08'06.712"N	103°45'18.417"W	10.00	EOC
10715.69	89.620	180.000	10371.00	619.01	-569.18	-497.67	720315.83	413401.05	32°08'06.712"N	103°45'18.417"W	2.00	TL
10728.00†	89.620	180.000	10371.08	631.25	-581.49	-497.67	720315.83	413388.74	32°08'06.590"N	103°45'18.418"W	0.00	
10828.00†	89.620	180.000	10371.74	730.68	-681.49	-497.67	720315.83	413288.75	32°08'05.600"N	103°45'18.424"W	0.00	
10928.00†	89.620	180.000	10372.41	830.10	-781.49	-497.67	720315.83	413188.76	32°08'04.611"N	103°45'18.430"W	0.00	
11028.00†	89.620	180.000	10373.07	929.53	-881.48	-497.68	720315.83	413088.76	32°08'03.621"N	103°45'18.437"W	0.00	
11128.00†	89.620	180.000	10373.73	1028.96	-981.48	-497.68	720315.83	412988.77	32°08'02.632"N	103°45'18.443"W	0.00	
11228.00†	89.620	180.000	10374.40	1128.39	-1081.48	-497.68	720315.83	412888.78	32°08'01.642"N	103°45'18.449"W	0.00	
11328.00†	89.620	180.000	10375.06	1227.81	-1181.48	-497.68	720315.83	412788.79	32°08'00.653"N	103°45'18.455"W	0.00	
11428.00†	89.620	180.000	10375.72	1327.24	-1281.48	-497.68	720315.83	412688.80	32°07'59.663"N	103°45'18.462"W	0.00	
11528.00†	89.620	180.000	10376.39	1426.67	-1381.47	-497.68	720315.83	412588.80	32°07'58.674"N	103°45'18.468"W	0.00	
11628.00†	89.620	180.000	10377.05	1526.10	-1481.47	-497.68	720315.83	412488.81	32°07'57.684"N	103°45'18.474"W	0.00	
11728.00†	89.620	180.000	10377.71	1625.53	-1581.47	-497.68	720315.83	412388.82	32°07'56.695"N	103°45'18.480"W	0.00	
11828.00†	89.620	180.000	10378.38	1724.95	-1681.47	-497.68	720315.83	412288.83	32°07'55.705"N	103°45'18.487"W	0.00	
11928.00†	89.620	180.000	10379.04	1824.38	-1781.47	-497.68	720315.83	412188.83	32°07'54.716"N	103°45'18.493"W	0.00	



# Planned Wellpath Report

Rev-A.0  
Page 5 of 6



REFERENCE WELLPATH IDENTIFICATION			
Operator	Devon Energy	Slot	No.1H SHL
Area	Eddy County, NM	Well	No.1H
Field	(Cotton) Sec 10, T25S, R31E	Wellbore	No.1H PWB
Facility	Cotton Draw 14 Fed Com No.1H & No.2H		

WELLPATH DATA (164 stations)      * = interpolated/extrapolated station												
MD [ft]	Inclination [°]	Azimuth [°]	TVD [ft]	Vert Sect [ft]	North [ft]	East [ft]	Grid East [US ft]	Grid North [US ft]	Latitude	Longitude	DLS [°/100ft]	Comments
12028.00†	89.620	180.000	10379.70	1923.81	-1881.46	-497.68	720315.82	412088.84	32°07'53.726"N	103°45'18.499"W	0.00	
12128.00†	89.620	180.000	10380.37	2023.24	-1981.46	-497.69	720315.82	411988.85	32°07'52.737"N	103°45'18.505"W	0.00	
12228.00†	89.620	180.000	10381.03	2122.66	-2081.46	-497.69	720315.82	411888.86	32°07'51.747"N	103°45'18.512"W	0.00	
12328.00†	89.620	180.000	10381.69	2222.09	-2181.46	-497.69	720315.82	411788.87	32°07'50.758"N	103°45'18.518"W	0.00	
12428.00†	89.620	180.000	10382.36	2321.52	-2281.45	-497.69	720315.82	411688.87	32°07'49.769"N	103°45'18.524"W	0.00	
12528.00†	89.620	180.000	10383.02	2420.95	-2381.45	-497.69	720315.82	411588.88	32°07'48.779"N	103°45'18.530"W	0.00	
12628.00†	89.620	180.000	10383.68	2520.37	-2481.45	-497.69	720315.82	411488.89	32°07'47.790"N	103°45'18.537"W	0.00	
12728.00†	89.620	180.000	10384.35	2619.80	-2581.45	-497.69	720315.82	411388.90	32°07'46.800"N	103°45'18.543"W	0.00	
12828.00†	89.620	180.000	10385.01	2719.23	-2681.45	-497.69	720315.82	411288.90	32°07'45.811"N	103°45'18.549"W	0.00	
12928.00†	89.620	180.000	10385.67	2818.66	-2781.44	-497.69	720315.82	411188.91	32°07'44.821"N	103°45'18.555"W	0.00	
13028.00†	89.620	180.000	10386.33	2918.08	-2881.44	-497.69	720315.82	411088.92	32°07'43.832"N	103°45'18.562"W	0.00	
13128.00†	89.620	180.000	10387.00	3017.51	-2981.44	-497.69	720315.81	410988.93	32°07'42.842"N	103°45'18.568"W	0.00	
13228.00†	89.620	180.000	10387.66	3116.94	-3081.44	-497.69	720315.81	410888.94	32°07'41.853"N	103°45'18.574"W	0.00	
13328.00†	89.620	180.000	10388.32	3216.37	-3181.43	-497.70	720315.81	410788.94	32°07'40.863"N	103°45'18.580"W	0.00	
13428.00†	89.620	180.000	10388.99	3315.80	-3281.43	-497.70	720315.81	410688.95	32°07'39.874"N	103°45'18.587"W	0.00	
13528.00†	89.620	180.000	10389.65	3415.22	-3381.43	-497.70	720315.81	410588.96	32°07'38.884"N	103°45'18.593"W	0.00	
13628.00†	89.620	180.000	10390.31	3514.65	-3481.43	-497.70	720315.81	410488.97	32°07'37.895"N	103°45'18.599"W	0.00	
13728.00†	89.620	180.000	10390.98	3614.08	-3581.43	-497.70	720315.81	410388.98	32°07'36.905"N	103°45'18.605"W	0.00	
13828.00†	89.620	180.000	10391.64	3713.51	-3681.42	-497.70	720315.81	410288.98	32°07'35.916"N	103°45'18.612"W	0.00	
13928.00†	89.620	180.000	10392.30	3812.93	-3781.42	-497.70	720315.81	410188.99	32°07'34.926"N	103°45'18.618"W	0.00	
14028.00†	89.620	180.000	10392.97	3912.36	-3881.42	-497.70	720315.81	410089.00	32°07'33.937"N	103°45'18.624"W	0.00	
14128.00†	89.620	180.000	10393.63	4011.79	-3981.42	-497.70	720315.81	409989.01	32°07'32.947"N	103°45'18.630"W	0.00	
14228.00†	89.620	180.000	10394.29	4111.22	-4081.41	-497.70	720315.80	409889.01	32°07'31.958"N	103°45'18.637"W	0.00	
14328.00†	89.620	180.000	10394.96	4210.64	-4181.41	-497.70	720315.80	409789.02	32°07'30.968"N	103°45'18.643"W	0.00	
14428.00†	89.620	180.000	10395.62	4310.07	-4281.41	-497.70	720315.80	409689.03	32°07'29.979"N	103°45'18.649"W	0.00	
14528.00†	89.620	180.000	10396.28	4409.50	-4381.41	-497.71	720315.80	409589.04	32°07'28.989"N	103°45'18.655"W	0.00	
14628.00†	89.620	180.000	10396.95	4508.93	-4481.41	-497.71	720315.80	409489.05	32°07'28.000"N	103°45'18.662"W	0.00	
14728.00†	89.620	180.000	10397.61	4608.35	-4581.40	-497.71	720315.80	409389.05	32°07'27.010"N	103°45'18.668"W	0.00	
14787.05	89.620	180.000	10398.00	4667.06	-4640.45	-497.71	720315.80	409330.01	32°07'26.426"N	103°45'18.672"W	0.00	No.1H PBHL



# Planned Wellpath Report

Rev-A.0

Page 6 of 6



## REFERENCE WELLPATH IDENTIFICATION

Operator	Devon Energy	Slot	No.1H SHL
Area	Eddy County, NM	Well	No.1H
Field	(Cotton) Sec 10, T25S, R31E	Wellbore	No.1H PWB
Facility	Cotton Draw 14 Fed Com No.1H & No.2H		

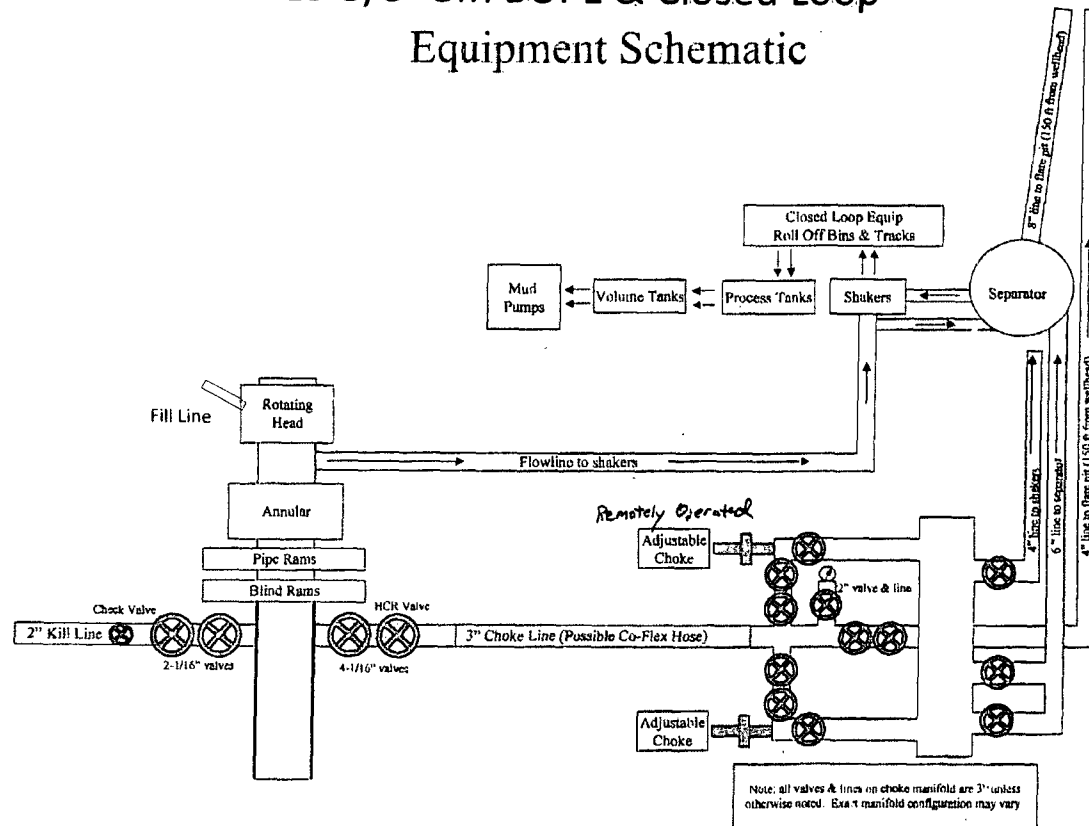
## TARGETS

Name	MD [ft]	TVD [ft]	North [ft]	East [ft]	Grid East [US ft]	Grid North [US ft]	Latitude	Longitude	Shape
1) CD 14 No.1H PBHL	14787.05	10398.00	4640.45	497.71	720315.80	409330.01	32°07'26.426"N	103°45'18.672"W	point

## SURVEY PROGRAM - Ref Wellbore: No.1H PWB Ref Wellpath: Rev-A.0

Start MD [ft]	End MD [ft]	Positional Uncertainty Model	Log Name/Comment	Wellbore
28.00	14787.05	NaviTrak (Standard)		No.1H PWB

# 13-5/8" 5M BOPE & Closed Loop Equipment Schematic



## **NOTES REGARDING BLOWOUT PREVENTERS**

Devon Energy Production Company, L.P.  
**Cotton Draw 14 Fed Com 1H**

1. Drilling Nipple will be constructed so it can be removed mechanically without the aid of a welder. The minimum internal diameter will equal BOP bore.
2. Wear ring will be properly installed in head.
3. Blowout preventer and all associated filings will be in operable condition to withstand a minimum of 5000 psi working pressure.
4. All fittings will be flanged.
5. A fill bore safety valve tested to a minimum of 5000 psi WP with proper thread connections will be available on the rotary rig floor at all times.
6. All choke lines will be anchored to prevent movement.
7. All BOP equipment will be equal to or larger in bore than the internal diameter of the last casing string.
8. Will maintain a kelly cock attached to the kelly.
9. Hand wheels and wrenches will be properly installed and tested for safe operation.
10. Hydraulic floor control for blowout preventer will be located as near in proximity to driller's controls as possible.
11. All BOP equipment will meet API standards and include a minimum 40 gallon accumulator having two independent means of power to initiate closing operation.

RIG 212



## QUALITY DOCUMENT

PHOENIX RUBBER  
INDUSTRIAL LTD.

6728 Szeged, Budapest út 10. Hungary • H-6701 Szeged, P. O. Box 152  
Phone: (3662) 556-737 • Fax: (3662) 556-738

SALES & MARKETING: H-1092 Budapest, Ráday u. 42-44. Hungary • H-1440 Budapest, P. O. Box 26  
Phone: (361) 456-4200 • Fax: (361) 217-2872, 456-4273 • www.taurusemerge.hu

<b>QUALITY CONTROL INSPECTION AND TEST CERTIFICATE</b>				CERT. N°: 552	
PURCHASER: Phoenix Beattie Co.				P.O. N°: 1519FA-871	
PHOENIX RUBBER order N°: 170466		HOSE TYPE: 3" ID Choke and Kill Hose			
HOSE SERIAL N°: 34128		NOMINAL / ACTUAL LENGTH: 11,43 m			
W.P. 68,96 MPa 10000 psi		T.P. 103,4 MPa 15000 psi		Duration: 60 min.	
Pressure test with water at ambient temperature  <p style="text-align: center;">See attachment. (1 page)</p> <p>↑ 10 mm = 10 Min. → 10 mm = 25 MPa</p>					
COUPLINGS					
Type	Serial N°		Quality	Heat N°	
3" coupling with 4 1/16" Flange end	720 719		AISI 4130	C7626	
			AISI 4130	47357	
API Spec 16 C Temperature rate: "B"					
All metal parts are flawless					
WE CERTIFY THAT THE ABOVE HOSE HAS BEEN MANUFACTURED IN ACCORDANCE WITH THE TERMS OF THE ORDER AND PRESSURE TESTED AS ABOVE WITH SATISFACTORY RESULT.					
Date:	Inspector		Quality Control		
29. April. 2002.			PHOENIX RUBBER Industrial Ltd. Hose Inspection and Vessel Test Dept. PHOENIX RUBBER Q.C.		

40920-0-00015 N800C

8	GN1	+0.000	PC	14:00		
	RD1	+0.000	PC	14:00		
	DL	+0.011	PC	13:00		
7	GN1	+0.000	PC	13:40	40	80
	RD1	+0.000	PC	13:40		
	DL	+0.017	PC	13:40		
6	GN1	+0.000	PC	13:20		
	RD1	+0.000	PC	13:20		
	DL	+0.030	PC	13:20		
5	GN1	+0.000	PC	13:00		
	RD1	+0.000	PC	13:00		
	DL	+0.055	PC	13:00		
4						
3						
2						

**GENEX RUBBER**  
Industrial Ltd.  
Hose Inspection and  
Certification Dept.

VERIFIED TRUE CO.  
PHOENIX RUBBER CO.



Fluid Technology

ContiTech Beattie Corp.  
Website: [www.contitechbeattie.com](http://www.contitechbeattie.com)

Monday, June 14, 2010

RE: Drilling & Production Hoses  
Lifting & Safety Equipment

To Helmerich & Payne,

A Continental ContiTech hose assembly can perform as intended and suitable for the application regardless of whether the hose is secured or unsecured in its configuration. As a manufacturer of High Pressure Hose Assemblies for use in Drilling & Production, we do offer the corresponding lifting and safety equipment, this has the added benefit of easing the lifting and handling of each hose assembly whilst affording hose longevity by ensuring correct handling methods and procedures as well as securing the hose in the unlikely event of a failure; but in no way does the lifting and safety equipment affect the performance of the hoses providing the hoses have been handled and installed correctly. It is good practice to use lifting & safety equipment but not mandatory.

Should you have any questions or require any additional information/clarifications then please do not hesitate to contact us.

ContiTech Beattie is part of the Continental AG Corporation and can offer the full support resources associated with a global organization.

Best regards,

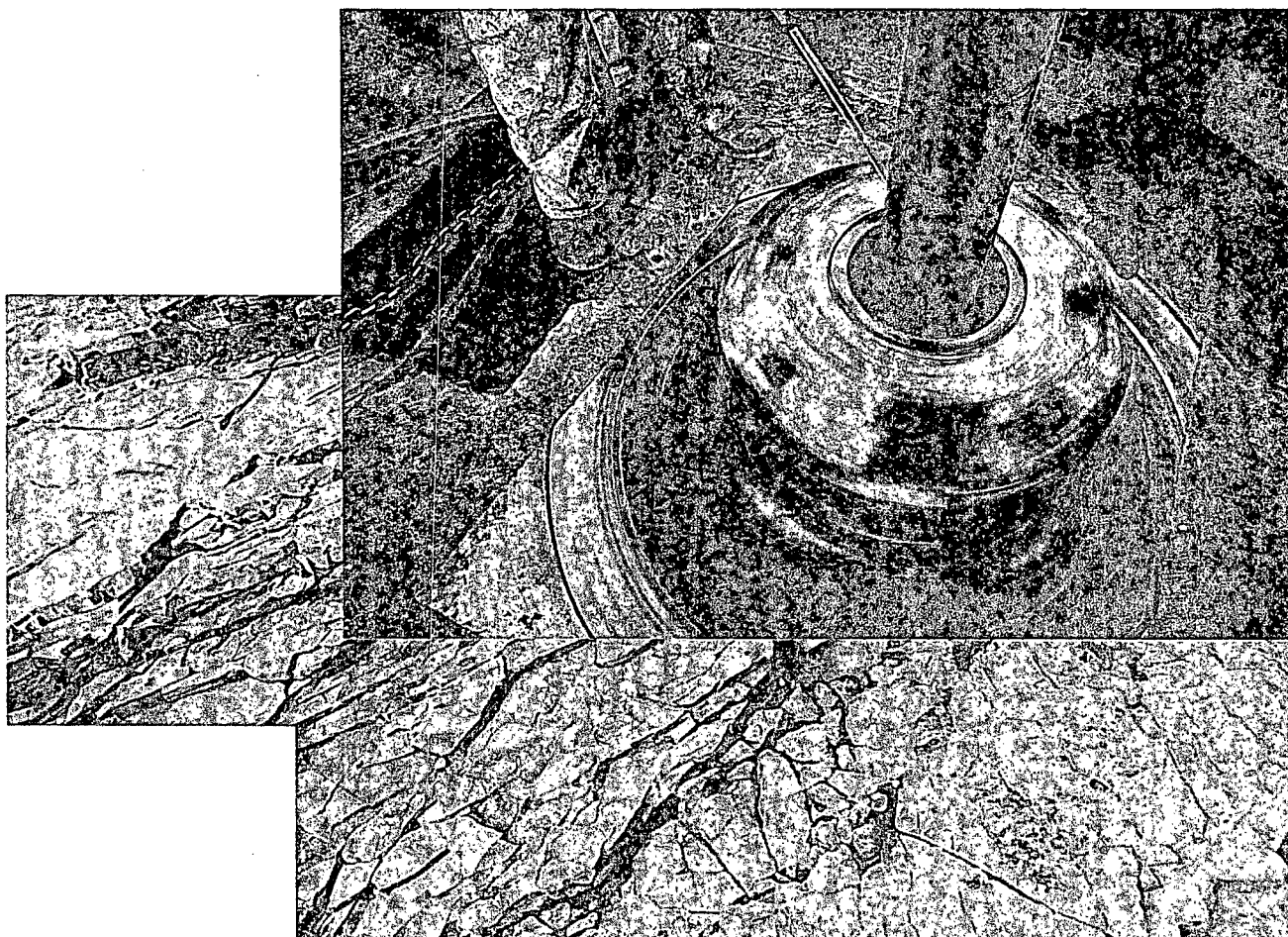
Robin Hodgson  
Sales Manager  
ContiTech Beattie Corp

ContiTech Beattie Corp,  
11535 Brittmoore Park Drive,  
Houston, TX 77041  
Phone: +1 (832) 327-0141  
Fax: +1 (832) 327-0148  
[www.contitechbeattie.com](http://www.contitechbeattie.com)





Commitment Runs Deep



Design Plan  
Operation and Maintenance Plan  
Closure Plan

SENM - Closed Loop Systems  
June 2010

## **I. Design Plan**

Devon uses MI SWACO closed loop system (CLS). The MI SWACO CLS is designed to maintain drill solids at or below 5%. The equipment is arranged to progressively remove solids from the largest to the smallest size. Drilling fluids can thus be reused and savings is realized on mud and disposal costs. Dewatering may be required with the centrifuges to insure removal of ultra fine solids.

The drilling location is constructed to allow storm water to flow to a central sump normally the cellar. This insures no contamination leaves the drilling pad in the event of a spill. Storm water is reused in the mud system or stored in a reserve fluid tank farm until it can be reused. All lubricants, oils, or chemicals are removed immediately from the ground to prevent the contamination of storm water. An oil trap is normally installed on the sump if an oil spill occurs during a storm.

A tank farm is utilized to store drilling fluids including fresh water and brine fluids. The tank farm is constructed on a 20 ml plastic lined, bermed pad to prevent the contamination of the drilling site during a spill. Fluids from other sites may be stored in these tanks for processing by the solids control equipment and reused in the mud system. At the end of the well the fluids are transported from the tank farm to an adjoining well or to the next well for the rig.

Prior to installing a closed-loop system on site, the topsoil, if present, will be stripped and stockpiled for use as the final cover or fill at the time of closure.

Signs will be posted on the fence surrounding the closed-loop system unless the closed-loop system is located on a site where there is an existing well, that is operated by Devon.

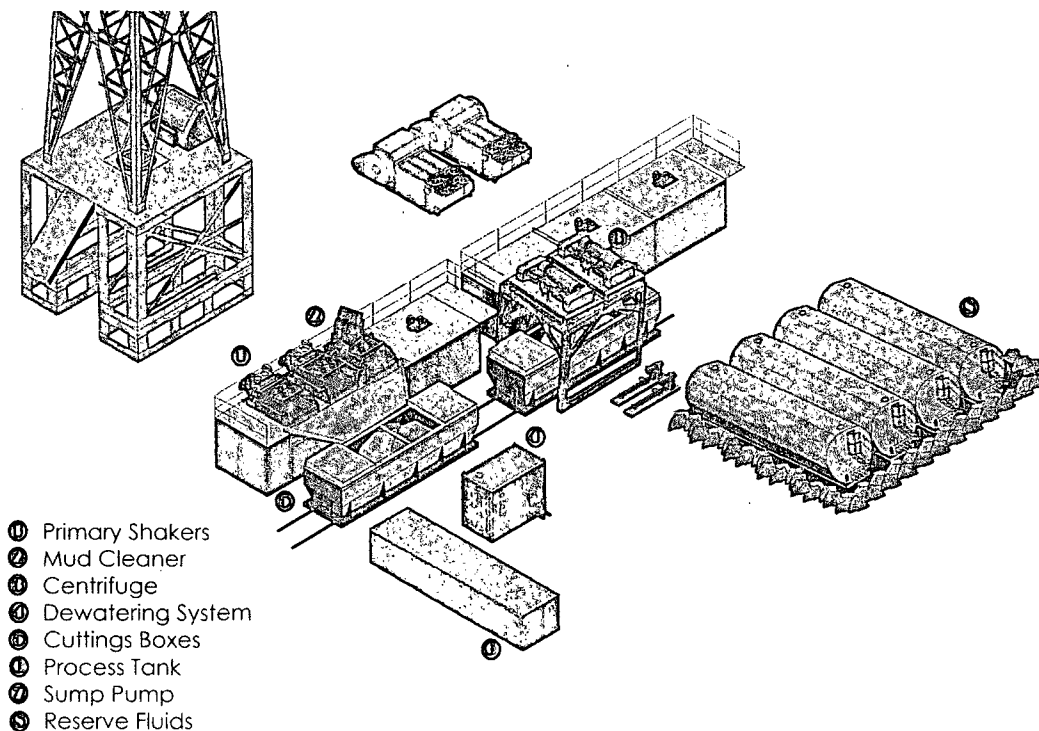
## **II. Operations and Maintenance Plan**

*Primary Shakers:* The primary shakers make the first removal of drill solids from the drilling mud as it leaves the well bore. The shakers are sized to handle maximum drilling rate at optimal screen size. The shakers normally remove solids down to 74 microns.

**Mud Cleaner:** The Mud Cleaner cleans the fluid after it leaves the shakers. A set of hydrocyclones are sized to handle 1.25 to 1.5 times the maximum circulating rate. This ensures all the fluid is being processed to an average cut point of 25 microns. The wet discharged is dewatered on a shaker equipped with ultra fine mesh screens and generally cut at 40 microns.



Closed Loop Schematic



**Centrifuges:** The centrifuges can be one or two in number depending on the well geometry or depth of well. The centrifuges are sized to maintain low gravity solids at 5% or below. They may or may not need a dewatering system to enhance the removal rates. The centrifuges can make a cut point of 8-10 microns depending on bowl speed, feed rate, solids loading and other factors.

The centrifuge system is designed to work on the active system and be flexible to process incoming fluids from other locations. This set-up is also dependant on well factors.

**Dewatering System:** The dewatering system is a chemical mixing and dosing system designed to enhance the solids removal of the centrifuge. Not commonly used in shallow wells. It may contain pH adjustment, coagulant mixing and dosing, and polymer mixing and dosing. Chemical flocculation binds ultra fine solids into a mass that is within the centrifuge operating design. The

dewatering system improves the centrifuge cut point to infinity or allows for the return of clear water or brine fluid. This ability allows for the ultimate control of low gravity solids.

*Cuttings Boxes:* Cuttings boxes are utilized to capture drill solids that are discarded from the solids control equipment. These boxes are set upon a rail system that allows for the removal and replacement of a full box of cuttings with an empty one. They are equipped with a cover that insures no product is spilled into the environment during the transportation phase.

*Process Tank: (Optional)* The process tank allows for the holding and process of fluids that are being transferred into the mud system. Additionally, during times of lost circulation the process tank may hold active fluids that are removed for additional treatment. It can further be used as a mixing tank during well control conditions.

*Sump and Sump Pump:* The sump is used to collect storm water and the pump is used to transfer this fluid to the active system or to the tank for to hold in reserve. It can also be used to collect fluids that may escape during spills. The location contains drainage ditches that allow the location fluids to drain to the sump.

*Reserve Fluids (Tank Farm):* A series of frac tanks are used to replace the reserve pit. These are steel tanks that are equipped with a manifold system and a transfer pump. These tanks can contain any number of fluids used during the drilling process. These can include fresh water, cut brine, and saturated salt fluid. The fluid can be from the active well or reclaimed fluid from other locations. A 20 ml liner and berm system is employed to ensure the fluids do not migrate to the environment during a spill.

If a leak develops, the appropriate division district office will be notified within 48 hours of the discovery and the leak will be addressed. Spill prevention is accomplished by maintaining pump packing, hoses, and pipe fittings to insure no leaks are occurring. During an upset condition the source of the spill is isolated and repaired as soon as it is discovered. Free liquid is removed by a diaphragm pump and returned to the mud system. Loose topsoil may be used to stabilize the spill and the contaminated soil is excavated and placed in the cuttings boxes. After the well is finished and the rig has moved, the entire location is scrapped and testing will be performed to determine if a release has occurred.

All trash is kept in a wire mesh enclosure and removed to an approved landfill when full. All spent motor oils are kept in separate containers and they are removed and sent to an approved recycling center. Any spilled lubricants, pipe

dope, or regulated chemicals are removed from soil and sent to landfills approved for these products.

These operations are monitored by Mi Swaco service technicians. Daily logs are maintained to ensure optimal equipment operation and maintenance. Screen and chemical use is logged to maintain inventory control. Fluid properties are monitored and recorded and drilling mud volumes are accounted for in the mud storage farm. This data is kept for end of well review to insure performance goals are met. Lessons learned are logged and used to help with continuous improvement.

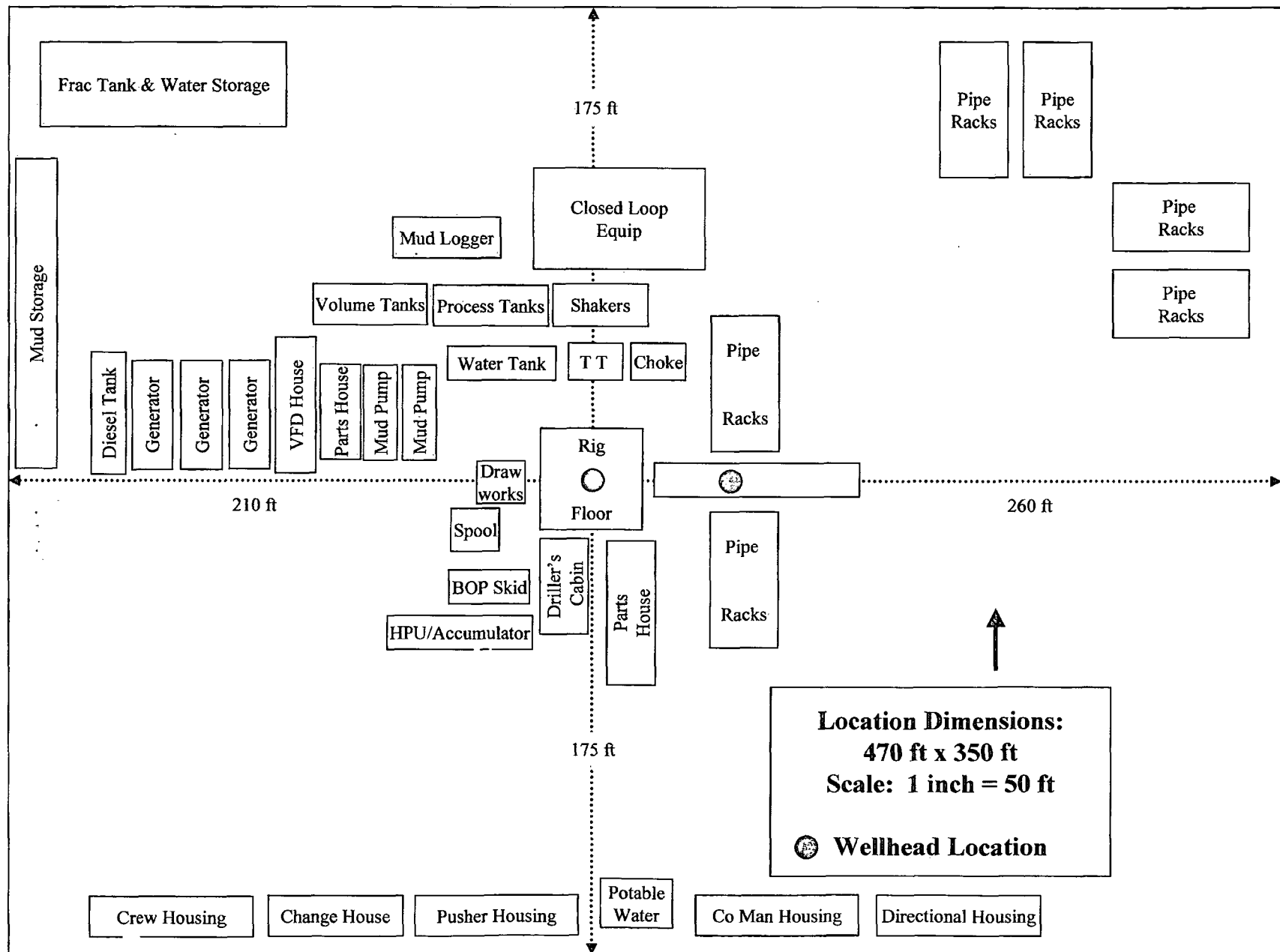
A MI SWACO field supervisor manages from 3-5 wells. They are responsible for training personnel, supervising installations, and inspecting sites for compliance of MI SWACO safety and operational policy.

### **III. Closure Plan**

A maximum 340' X 340' caliche pad is built per well. All of the trucks and steel tanks fit on this pad. All fluid cuttings go to the steel tanks to be hauled by various trucking companies to an agency approved disposal.

# H&P Flex Rig Location Layout

## 2 Well Pad





**Devon Energy Center  
333 West Sheridan Avenue  
Oklahoma City, Oklahoma 73102-5015**

# **Hydrogen Sulfide (H<sub>2</sub>S) Contingency Plan**

**For**

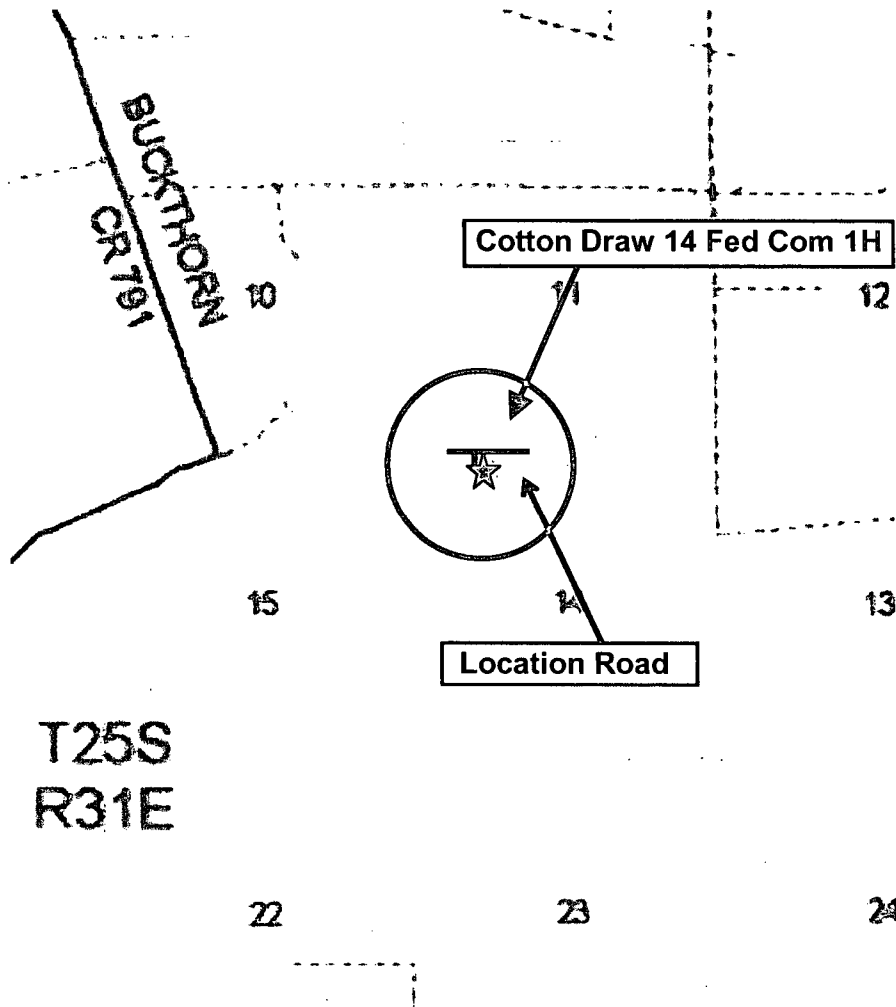
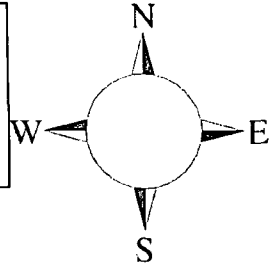
**Cotton Draw 14 Fed Com 1H**

**Sec-14, T-25S R-31E  
330' FNL & 1150' FWL  
LAT. = 32.1367548'N (NAD83)  
LONG = 103.7534983'W**

**Eddy County NM**

## Cotton Draw 14 Fed Com 1H

This is an open drilling site. H<sub>2</sub>S monitoring equipment and emergency response equipment will be used within 500' of zones known to contain H<sub>2</sub>S, including warning signs, wind indicators and H<sub>2</sub>S monitor.



Assumed 100 ppm H<sub>2</sub>S concentration shall trigger activation of this plan.

### Escape

Crews shall escape upwind of escaping gas in the event of an emergency release of gas. Escape can be facilitated from the location entrance road, West then Northwest on lease road. Crews should then block entrance to the location from the lease road so as not to allow anyone traversing into a hazardous area. The blockade should be at a safe distance outside of the ROE. There are no homes or buildings in or near the ROE.

**Assumed 100 ppm ROE = 3000'**

**100 ppm H<sub>2</sub>S concentration shall trigger activation of this plan.**

### **Emergency Procedures**

**In the event of a release of gas containing H<sub>2</sub>S, the first responder(s) must**

- **Isolate the area and prevent entry by other persons into the 100 ppm ROE.**
- **Evacuate any public places encompassed by the 100 ppm ROE.**
- **Be equipped with H<sub>2</sub>S monitors and air packs in order to control the release.**
- **Use the "buddy system" to ensure no injuries occur during the response**
- **Take precautions to avoid personal injury during this operation.**
- **Contact operator and/or local officials to aid in operation. See list of phone numbers attached.**
- **Have received training in the**
  - **Detection of H<sub>2</sub>S, and**
  - **Measures for protection against the gas,**
  - **Equipment used for protection and emergency response.**

### **Ignition of Gas Source**

Should control of the well be considered lost and ignition considered, take care to protect against exposure to Sulfur Dioxide (SO<sub>2</sub>). Intentional ignition must be coordinated with the NMOCD and local officials. Additionally the NM State Police may become involved. NM State Police shall be the Incident Command on scene of any major release. Take care to protect downwind whenever there is an ignition of the gas

### **Characteristics of H<sub>2</sub>S and SO<sub>2</sub>**

<b>Common Name</b>	<b>Chemical Formula</b>	<b>Specific Gravity</b>	<b>Threshold Limit</b>	<b>Hazardous Limit</b>	<b>Lethal Concentration</b>
<b>Hydrogen Sulfide</b>	<b>H<sub>2</sub>S</b>	<b>1.189 Air = 1</b>	<b>10 ppm</b>	<b>100 ppm/hr</b>	<b>600 ppm</b>
<b>Sulfur Dioxide</b>	<b>SO<sub>2</sub></b>	<b>2.21 Air = 1</b>	<b>2 ppm</b>	<b>N/A</b>	<b>1000 ppm</b>

## **Contacting Authorities**

Devon Energy Corp. personnel must liaison with local and state agencies to ensure a proper response to a major release. Additionally, the OCD must be notified of the release as soon as possible but no later than 4 hours. Agencies will ask for information such as type and volume of release, wind direction, location of release, etc. Be prepared with all information available. The following call list of essential and potential responders has been prepared for use during a release. Devon Energy Corp. Company response must be in coordination with the State of New Mexico's 'Hazardous Materials Emergency Response Plan' (HMER)

## **Hydrogen Sulfide Drilling Operation Plan**

### **I. HYDROGEN SULFIDE (H<sub>2</sub>S) TRAINING**

All personnel, whether regularly assigned, contracted, or employed on an unscheduled basis, will receive training from a qualified instructor in the following areas prior to commencing drilling operations on this well:

1. The hazards and characteristics of hydrogen sulfide (H<sub>2</sub>S)
2. The proper use and maintenance of personal protective equipment and life support systems.
3. The proper use of H<sub>2</sub>S detectors, alarms, warning systems, briefing areas, evacuation procedures, and prevailing winds.
4. The proper techniques for first aid and rescue procedures.

In addition, supervisory personnel will be trained in the following areas:

1. The effects of H<sub>2</sub>S metal components. If high tensile tubular are to be used, personnel will be trained in their special maintenance requirements.
2. Corrective action and shut-in procedures when drilling or reworking a well and blowout prevention and well control procedures.
3. The contents and requirements of the H<sub>2</sub>S Drilling Operations Plan and Public Protection Plan.

There will be an initial training session just prior to encountering a known or probable H<sub>2</sub>S zone (within 3 days or 500 feet) and weekly H<sub>2</sub>S and well control drills for all personnel in each crew. The initial training session shall include a review of the site specific H<sub>2</sub>S Drilling Operations Plan and the Public Protection Plan.

## **II. HYDROGEN SULFIDE TRAINING**

Note: All H<sub>2</sub>S safety equipment and systems will be installed, tested, and operational when drilling reaches a depth of 500 feet above, or three days prior to penetrating the first zone containing or reasonable expected to contain H<sub>2</sub>S.

### **1. Well Control Equipment**

- A. Flare line
- B. Choke manifold – (with remotely operated choke)
- C. Blind rams and pipe rams to accommodate all pipe sizes with properly sized closing unit
- D. Auxiliary equipment may include if applicable: annular preventer and rotating head.
- E. Mud/Gas Separator

### **2. Protective equipment for essential personnel:**

- A. 30-minute SCBA units located in the doghouse and at briefing areas, as indicated on well site diagram. As it may be difficult to communicate audibly while wearing these units, hand signals shall be utilized.

### **3. H<sub>2</sub>S detection and monitoring equipment:**

- A. Portable H<sub>2</sub>S monitors positioned on location for best coverage and response. These units have warning lights and audible sirens when H<sub>2</sub>S levels of 20 PPM are reached. These units are usually capable of detecting SO<sub>2</sub>, which is a byproduct of burning H<sub>2</sub>S.

### **4. Visual warning systems:**

- A. Wind direction indicators as shown on well site diagram
- B. Caution/ Danger signs shall be posted on roads providing direct access to locations. Signs will be painted a high visibility yellow with black lettering of sufficient size to be reasonable distance from the immediate location. Bilingual signs will be used when appropriate.

**5. Mud program:**

- A. The mud program has been designed to minimize the volume of H<sub>2</sub>S circulated to surface. Proper mud weight, safe drilling practices and the use of H<sub>2</sub>S scavengers will minimize hazards when penetrating H<sub>2</sub>S bearing zones.

**6. Metallurgy:**

- A. All drill strings, casings, tubing, wellhead, blowout preventer, drilling spool, kill lines, choke manifold lines, and valves shall be H<sub>2</sub>S trim.
- B. All elastomers used for packing and seals shall be H<sub>2</sub>S trim.

**7. Communication:**

- A. Radio communications in company vehicles including cellular telephones and 2-way radio
- B. Land line (telephone) communications at Office

**8. Well testing:**

- A. Drill stem testing will be performed with a minimum number of personnel in the immediate vicinity, which are necessary to safety and adequately conduct the test. The drill stem testing will be conducted during daylight hours and formation fluids will not be flowed to the surface. All drill-stem-testing operations conducted in an H<sub>2</sub>S environment will use the closed chamber method of testing.
- B. There will be no drill stem testing.

## **Devon Energy Corp. Company Call List**

<b>Artesia (575)</b>	<b>Cellular</b>	<b>Office</b>	<b>Home</b>
Foreman – Robert Bell.....	748-7448 .....	748-0178 .....	746-2991
Asst. Foreman –Tommy Polly.....	748-5290 .....	748-0165 .....	748-2846
Don Mayberry .....	748-5235 .....	748-0164 .....	746-4945
Montral Walker .....	390-5182 .....	748-0193 .....	(936) 414-6246
Engineer – Marcos Ortiz.....	(405) 317-0666.....	(405) 552-8152 .....	(405) 381-4350

## **Agency Call List**

<b><u>Lea</u></b>	<b>Hobbs</b>
<b><u>County</u></b>	Lea County Communication Authority .....
<b><u>(575)</u></b>	State Police .....
	City Police .....
	Sheriff's Office .....
	Ambulance.....
	Fire Department.....
	LEPC (Local Emergency Planning Committee).....
	NMOCD.....
	US Bureau of Land Management.....

<b><u>Eddy</u></b>	<b>Carlsbad</b>
<b><u>County</u></b>	State Police .....
<b><u>(575)</u></b>	City Police .....
	Sheriff's Office .....
	Ambulance .....
	Fire Department.....
	LEPC (Local Emergency Planning Committee).....
	US Bureau of Land Management.....
	NM Emergency Response Commission (Santa Fe) .....
	24 HR .....
	National Emergency Response Center (Washington, DC) ....

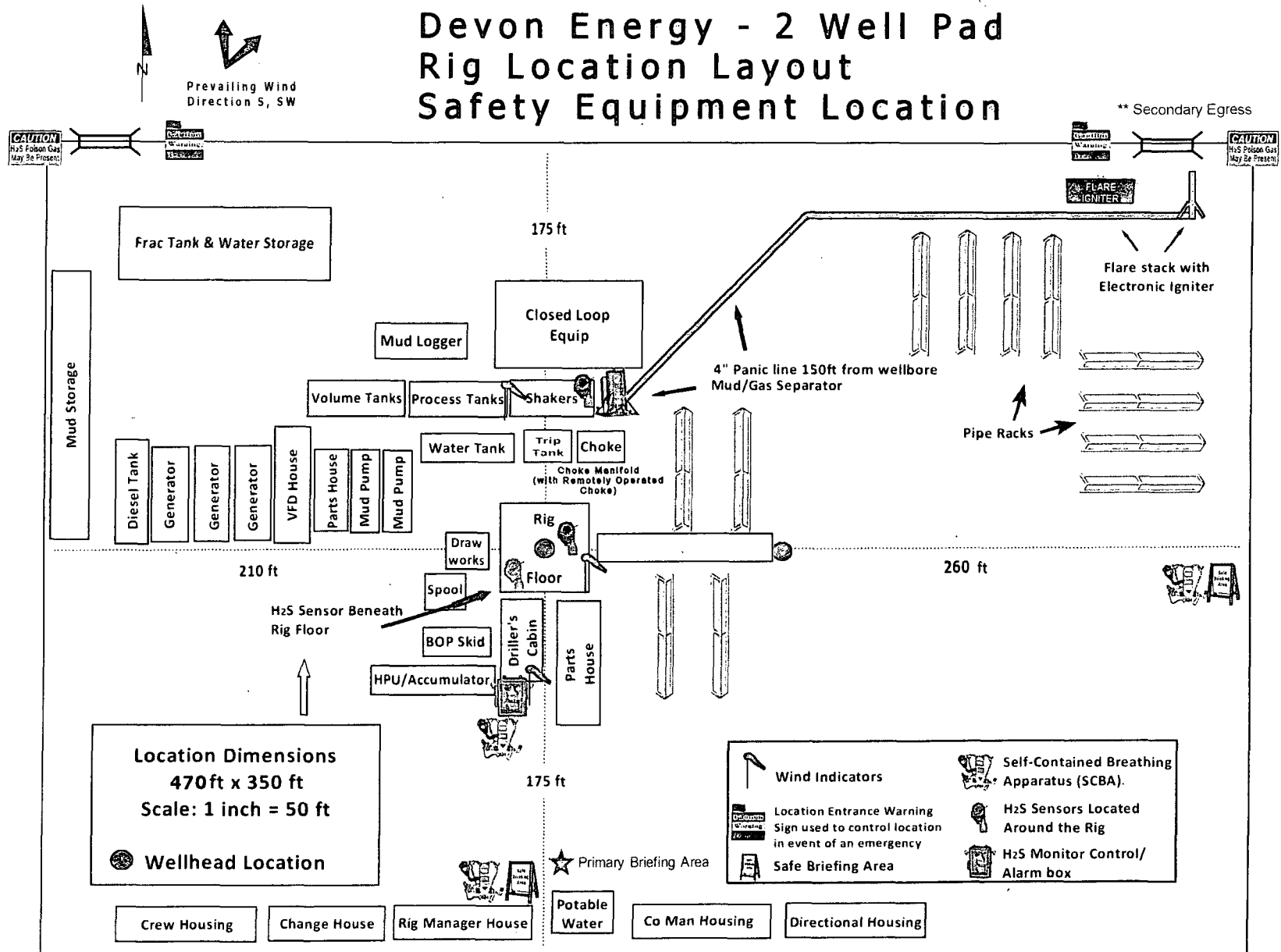
## **Emergency Services**

	Boots & Coots IWC .....
	Cudd Pressure Control.....
	Halliburton .....
	B. J. Services.....
<b>Give</b>	Native Air – Emergency Helicopter – Hobbs.....
<b>GPS</b>	Flight For Life - Lubbock, TX .....
<b>position:</b>	Aerocare - Lubbock, TX .....
	Med Flight Air Amb - Albuquerque, NM .....
	Lifeguard Air Med Svc. Albuquerque, NM .....

Prepared in conjunction with  
Dave Small



# Devon Energy - 2 Well Pad Rig Location Layout Safety Equipment Location



\*\* Secondary egress is in excess of 200ft. from actual flair location

**devon**

**Proposed Interim  
Site Reclamation**

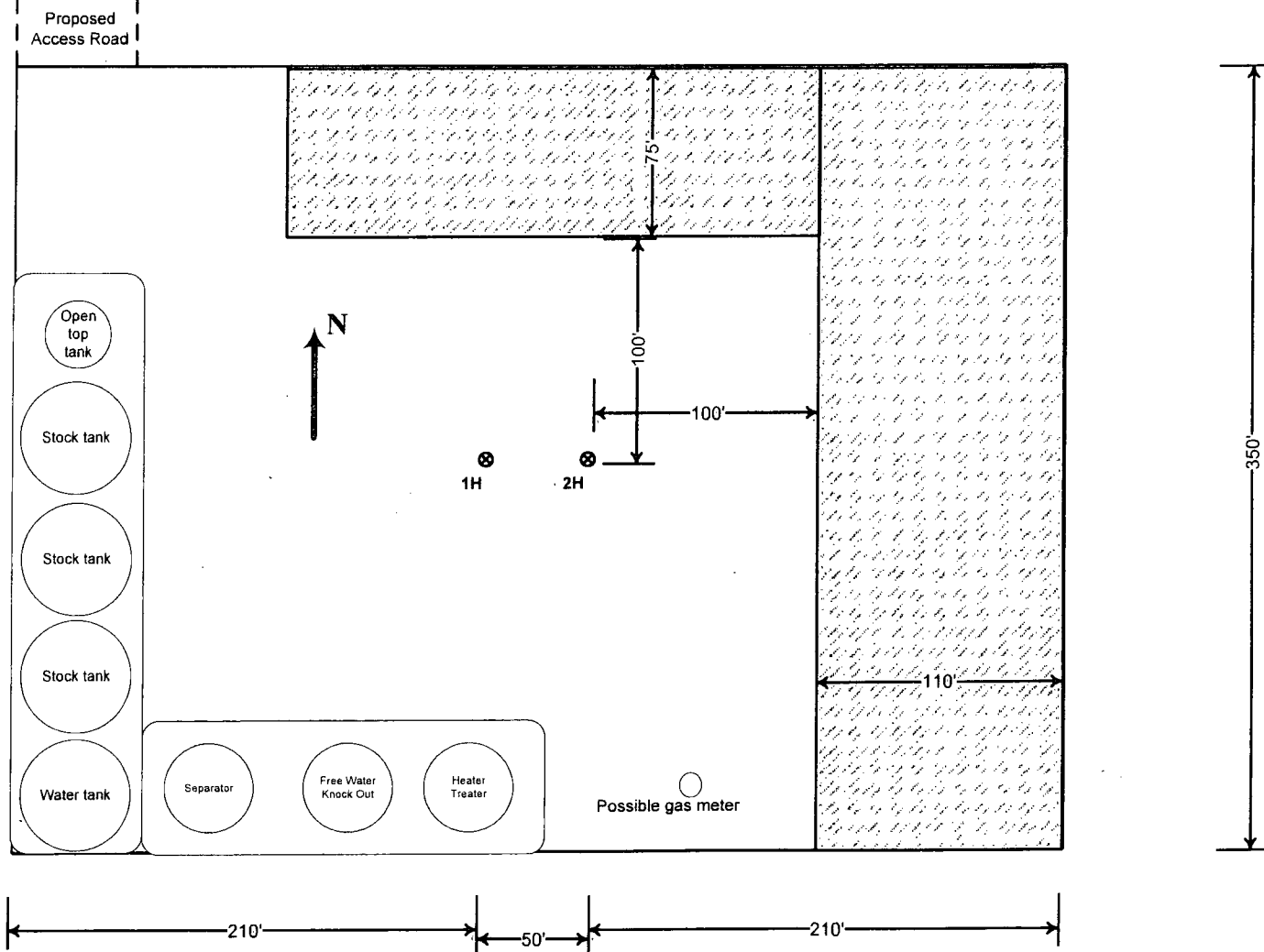
Devon Energy Production Co.  
CDU 14 Fed Com 1H  
330' FNL & 1150' FWL  
Sec. 14-T25S-R31E  
Eddy County, NM



Proposed  
Reclamation  
Area



Scale: 1in = 60ft.



## **SURFACE USE PLAN**

Devon Energy Production Company, L.P.  
Cotton Draw 14 Fed Com 1H

### **1. Existing Roads:**

- a. The well site and elevation plat for the proposed well are reflected on the "Site Map". The well was staked by Madron Surveying, Inc.
- b. All roads into the location are depicted on the "Vicinity Map". The operator will repair pot holes, clear ditches, repair the crown, etc. All existing structures on the entire access route such as cattle guards, culverts, etc. will be properly repaired or replaced if they are damaged or have deteriorated beyond practical use. BLM written approval will be acquired before application of surfactants, binding agents, or other dust suppression chemicals on roadways.
- c. Directions to Location: From State Highway 128 and CR 1 (Orla Highway) Go South on (CR 1) 6.5 miles, turn right on Caliche Road (Monsanto Road) and go west 2.2 miles, turn right and go north 0.75 miles, bend left and go west 2.0 miles, turn right and go north 0.25 miles, turn left and go west 0.8 miles and location is on the left (south) 330'.

### **2. New or Reconstructed Access Roads:**

- a. The "Site Map" shows new constructed access road, which will be approximately 158 LF from the existing Lease road.
- b. The maximum driving width of the access road will be 14 feet. The maximum width of surface disturbance when constructing the access road will not exceed 25 feet. The road will be crowned and ditched with 2% slope from the tip of the crown to the edge of the driving surface. The ditches will be 3 feet wide with 3:1 slopes. The driving surface will be made of 6" rolled and compacted caliche.
- c. No cattle guards, grates or fence cuts will be required. No turnouts are planned.

### **3. Location of Existing Wells:**

The attached "One Mile Radius Map" shows all existing and proposed wells within a one-mile radius of the proposed location.

### **4. Location of Existing and/or Proposed Production Facilities:**

- a. In the event the well is found productive, the Cotton Draw 14 Fed Com 1H battery would be utilized and shared, and the necessary production equipment will be installed at the well site. The tank battery would be located at the Cotton Draw 14 Fed Com 1H and 2H well pad located in Sec 14-T25S-R31E.
- b. If necessary, the well will be operated by means of an electric prime mover. If electric power poles are needed, a plat and a sundry notice will be filed with your office.
- c. All flow lines will adhere to API standards.
- d. If the well is productive, rehabilitation plans are as follows:
  - i. A closed loop system will be utilized.

- ii. The original topsoil from the well site will be returned to the location. The drill site will then be contoured as close as possible to the original state.

**5. Location and Types of Water Supply:**

This location will be drilled using a combination of water mud systems (outlined in the Drilling Program). The water will be obtained from commercial water stations in the area and hauled to location by transport truck using the existing and proposed roads described and depicted on the "Vicinity Map". On occasion, water will be obtained from a pre-existing water well, running a pump directly to the drill rig. In cases where a poly pipeline is used to transport water for drilling purposes, proper authorizations will be secured. If a poly pipeline is used, the size, distance, and map showing route will be provided to the BLM via sundry notice.

**6. Construction Materials:**

Obtaining caliche: One primary way of obtaining caliche to build locations and roads will be by "turning over" the location. This means caliche will be obtained from the actual well site. Actual amounts will vary for each pad. The procedure below has been approved by BLM personnel:

- a. The top 6 inches of topsoil is pushed off and stockpiled along the side of the location.
- b. Subsoil is removed and stockpiled within the surveyed well pad.
- c. When caliche is found, material will be stock piled within the pad site to build the location and road.
- d. Then subsoil is pushed back in the hole and caliche is spread accordingly across entire location and road.
- e. Once well is drilled, the stock piled top soil will be used for interim reclamation and spread along areas where caliche is picked up and the location size is reduced.
- f. Neither caliche, nor subsoil will be stock piled outside of the well pad. Topsoil will be stockpiled along the edge of the pad as depicted in the Well Site Layout or survey plat.

In the event that no caliche is found onsite, caliche will be hauled in from a BLM approved caliche pit or other established mineral pit. A BLM mineral material permit will be acquired prior to obtaining any mineral material from BLM pits or land.

**7. Methods of Handling Waste Material:**

- a. Drill cuttings will be safely contained in a closed loop system and disposed of properly at a NMOCD approved disposal site.
- b. All trash, junk and other waste material will be contained in trash cages or trash bins to prevent scattering. When the job is completed all contents will be removed and disposed of in an approved sanitary landfill.
- c. The supplier will pick up salts remaining after completion of well, including broken sacks.
- d. A Porto-john will be provided for the rig crews. This equipment will be properly maintained during the drilling and completion operations and will be removed when all operations are complete.
- e. Remaining drilling fluids will be sent to a closed loop system. Water produced during completion will be put into a closed loop system. Oil and condensate produced will be put into a storage tank and sold.
- f. Disposal of fluids to be transported by the following companies:

- i. American Production Service Inc, Odessa TX
- ii. Gandy Corporation, Lovington NM
- iii. I & W Inc, Loco Hill NM
- iv. Jims Water Service of Co Inc, Denver CO

**8. Ancillary Facilities:** No campsite or other facilities will be constructed as a result of this well.

**9. Well Site Layout**

- a. The Rig Location Layout attachment shows the proposed well site layout and pad dimensions.
- b. The Rig Location Layout attachment proposes location of sump pits and living facilities.
- c. Mud pits in the active circulating system will be steel pits.
- d. A closed loop system will be utilized.
- e. If a pit or closed loop system is utilized, Devon will provide a copy of the Design Plan to the BLM.

**10. Plans for Surface Reclamation:**

- a. After concluding the drilling and/or completion operations, if the well is found non-commercial, the caliche will be removed from the pad and transported to the original caliche pit or used for other drilling locations. The road will be reclaimed as directed by the BLM. The original top soil will again be returned to the pad and contoured, as close as possible, to the original topography.
- b. The location and road will be rehabilitated as recommended by the BLM.
- c. If the well is deemed commercially productive, caliche from areas of the pad site not required for operations will be reclaimed. The original top soil will be returned to the area of the drill pad not necessary to operate the well. These unused areas of the drill pad will be contoured, as close as possible, to match the original topography.
- d. All disturbed areas not needed for active support of production operations will undergo interim reclamation. The portions of the cleared well site not needed for operational and safety purposes will be recontoured to a final or intermediate contour that blends with the surrounding topography as much as possible. Topsoil will be respread over areas not needed for all-weather operations.

**11. Surface Ownership**

- a. The surface is owned by the US Government and is administered by the Bureau of Land Management. The surface is multiple use with the primary uses of the region for the grazing of livestock and the production of oil and gas.
- b. The proposed road routes and the surface location will be restored as directed by the BLM.

**12. Other Information:**

- a. The area surrounding the well site is grassland. The topsoil is very sandy in nature. The vegetation is moderately sparse with native prairie grass, sage bush, yucca and miscellaneous

weeds. No wildlife was observed but it is likely that deer, rabbits, coyotes, and rodents traverse the area.

- b. There is no permanent or live water in the general proximity of the location.
- c. There are no dwellings within 2 miles of location.
- d. A Cultural Resources Examination will be completed by the Permian Basin Cultural Resource Fund in lieu of being required to conduct a Class III Survey for cultural resources associated with their project within the BLM office in Carlsbad, New Mexico.

**13. Bond Coverage:**

Bond Coverage is Nationwide; Bond # is CO-1104 & NMB-000801.

**Operators Representative:**

The Devon Energy Production Company, L.P. representatives responsible for ensuring compliance of the surface use plan are listed below.

Dan McCorkell - Operations Engineer  
Devon Energy Production Company, L.P.  
333 W. Sheridan  
Oklahoma City, OK 73102-5010  
(405) 228-7528 (office)  
(405) 443-8697 (Cellular)

Don Mayberry - Superintendent  
Devon Energy Production Company, L.P.  
Post Office Box 250  
Artesia, NM 88211-0250  
(575) 748-3371 (office)  
(575) 746-4945 (home)

## PECOS DISTRICT CONDITIONS OF APPROVAL

<b>OPERATOR'S NAME:</b>	<b>Devon Energy Production Company, L.P.</b>
<b>LEASE NO.:</b>	<b>NMLC-061862</b>
<b>WELL NAME &amp; NO.:</b>	<b>Cotton Draw 14 Fed Com 1H</b>
<b>SURFACE HOLE FOOTAGE:</b>	<b>0330' FNL &amp; 1150' FWL</b>
<b>BOTTOM HOLE FOOTAGE</b>	<b>0330' FSL &amp; 0660' FWL</b>
<b>LOCATION:</b>	<b>Section 14, T. 25 S., R 31 E., NMPM</b>
<b>COUNTY:</b>	<b>Eddy County, New Mexico</b>

### TABLE OF CONTENTS

Standard Conditions of Approval (COA) apply to this APD. If any deviations to these standards exist or special COAs are required, the section with the deviation or requirement will be checked below.

- ☐ **General Provisions**
- ☐ **Permit Expiration**
- ☐ **Archaeology, Paleontology, and Historical Sites**
- ☐ **Noxious Weeds**
- ☒ **Special Requirements**
  - Lesser Prairie-Chicken Timing Stipulations
  - Ground-level Abandoned Well Marker
  - Communitization Agreement
- ☐ **Construction**
  - Notification
  - Topsoil
  - Closed Loop System
  - Federal Mineral Material Pits
  - Well Pads
  - Roads
- ☐ **Road Section Diagram**
- ☒ **Drilling**
  - Cement Requirements
  - Logging Requirements
  - Waste Material and Fluids
- ☐ **Production (Post Drilling)**
  - Well Structures & Facilities
- ☐ **Interim Reclamation**
- ☐ **Final Abandonment & Reclamation**

## **I. GENERAL PROVISIONS**

The approval of the Application For Permit To Drill (APD) is in compliance with all applicable laws and regulations: 43 Code of Federal Regulations 3160, the lease terms, Onshore Oil and Gas Orders, Notices To Lessees, New Mexico Oil Conservation Division (NMOCD) Rules, National Historical Preservation Act As Amended, and instructions and orders of the Authorized Officer. Any request for a variance shall be submitted to the Authorized Officer on Form 3160-5, Sundry Notices and Report on Wells.

## **II. PERMIT EXPIRATION**

If the permit terminates prior to drilling and drilling cannot be commenced within 60 days after expiration, an operator is required to submit Form 3160-5, Sundry Notices and Reports on Wells, requesting surface reclamation requirements for any surface disturbance. However, if the operator will be able to initiate drilling within 60 days after the expiration of the permit, the operator must have set the conductor pipe in order to allow for an extension of 60 days beyond the expiration date of the APD. (Filing of a Sundry Notice is required for this 60 day extension.)

## **III. ARCHAEOLOGICAL, PALEONTOLOGY & HISTORICAL SITES**

Any cultural and/or paleontological resource discovered by the operator or by any person working on the operator's behalf shall immediately report such findings to the Authorized Officer. The operator is fully accountable for the actions of their contractors and subcontractors. The operator shall suspend all operations in the immediate area of such discovery until written authorization to proceed is issued by the Authorized Officer. An evaluation of the discovery shall be made by the Authorized Officer to determine the appropriate actions that shall be required to prevent the loss of significant cultural or scientific values of the discovery. The operator shall be held responsible for the cost of the proper mitigation measures that the Authorized Officer assesses after consultation with the operator on the evaluation and decisions of the discovery. Any unauthorized collection or disturbance of cultural or paleontological resources may result in a shutdown order by the Authorized Officer.

## **IV. NOXIOUS WEEDS**

The operator shall be held responsible if noxious weeds become established within the areas of operations. Weed control shall be required on the disturbed land where noxious weeds exist, which includes the roads, pads, associated pipeline corridor, and adjacent land affected by the establishment of weeds due to this action. The operator shall consult with the Authorized Officer for acceptable weed control methods, which include following EPA and BLM requirements and policies.

## **V. SPECIAL REQUIREMENT(S)**

### **Timing Limitation Stipulation / Condition of Approval for lesser prairie-chicken:**

Oil and gas activities including 3-D geophysical exploration, and drilling will not be allowed in lesser prairie-chicken habitat during the period from March 1st through June 15th annually. During that period, other activities that produce noise or involve human activity, such as the maintenance of oil and gas facilities, pipeline, road, and well pad construction, will be allowed except between 3:00 am and 9:00 am. The 3:00 am to 9:00 am restriction will not apply to normal, around-the-clock operations, such as venting, flaring, or pumping, which do not require a human presence during this period. Additionally, no new drilling will be allowed within up to 200 meters of leks known at the time of permitting. Normal vehicle use on existing roads will not be restricted. Exhaust noise from pump jack engines must be muffled or otherwise controlled so as not to exceed 75 db measured at 30 feet from the source of the noise.

**Ground-level Abandoned Well Marker to avoid raptor perching:** Upon the plugging and subsequent abandonment of the well, the well marker will be installed at ground level on a plate containing the pertinent information for the plugged well. For more installation details, contact the Carlsbad Field Office at 575-234-5972.

### **Communitization Agreement**

A Communitization Agreement covering the acreage dedicated to this well must be filed for approval with the BLM. The effective date of the agreement shall be prior to any sales. In addition, the well sign shall include the surface and bottom hole lease numbers. If the Communitization Agreement number is known, it shall also be on the sign. If not, it shall be placed on the sign when the sign is replaced.

## **VI. CONSTRUCTION**

### **A. NOTIFICATION**

The BLM shall administer compliance and monitor construction of the access road and well pad. Notify the Carlsbad Field Office at (575) 234-5909 at least 3 working days prior to commencing construction of the access road and/or well pad.

When construction operations are being conducted on this well, the operator shall have the approved APD and Conditions of Approval (COA) on the well site and they shall be made available upon request by the Authorized Officer.

### **B. TOPSOIL**

The operator shall strip the top portion of the soil (root zone) from the entire well pad area and stockpile the topsoil along the edge of the well pad as depicted in the APD. The root zone is typically six (6) inches in depth. All the stockpiled topsoil will be redistributed over the interim reclamation areas. Topsoil shall not be used for berming the pad or facilities. For final reclamation, the topsoil shall be spread over the entire pad area for seeding preparation.

Other subsoil (below six inches) stockpiles must be completely segregated from the topsoil stockpile. Large rocks or subsoil clods (not evident in the surrounding terrain) must be buried within the approved area for interim and final reclamation.

### **C. CLOSED LOOP SYSTEM**

Tanks are required for drilling operations: No Pits.

The operator shall properly dispose of drilling contents at an authorized disposal site.

### **D. FEDERAL MINERAL MATERIALS PIT**

Payment shall be made to the BLM prior to removal of any federal mineral materials. Call the Carlsbad Field Office at (575) 234-5972.

### **E. WELL PAD SURFACING**

Surfacing of the well pad is not required.

If the operator elects to surface the well pad, the surfacing material may be required to be removed at the time of reclamation. The well pad shall be constructed in a manner which creates the smallest possible surface disturbance, consistent with safety and operational needs.

### **F. EXCLOSURE FENCING (CELLARS & PITS)**

**Exclosure Fencing**

The operator will install and maintain exclosure fencing for all open well cellars to prevent access to public, livestock, and large forms of wildlife before and after drilling operations until the pit is free of fluids and the operator initiates backfilling. (For examples of exclosure fencing design, refer to BLM's Oil and Gas Gold Book, Exclosure Fence Illustrations, Figure 1, Page 18.)

**G. ON LEASE ACCESS ROADS****Road Width**

The access road shall have a driving surface that creates the smallest possible surface disturbance and does not exceed fourteen (14) feet in width. The maximum width of surface disturbance, when constructing the access road, shall not exceed twenty-five (25) feet.

**Surfacing**

Surfacing material is not required on the new access road driving surface. If the operator elects to surface the new access road or pad, the surfacing material may be required to be removed at the time of reclamation.

Where possible, no improvements should be made on the unsurfaced access road other than to remove vegetation as necessary, road irregularities, safety issues, or to fill low areas that may sustain standing water.

The Authorized Officer reserves the right to require surfacing of any portion of the access road at any time deemed necessary. Surfacing may be required in the event the road deteriorates, erodes, road traffic increases, or it is determined to be beneficial for future field development. The surfacing depth and type of material will be determined at the time of notification.

**Crowning**

Crowning shall be done on the access road driving surface. The road crown shall have a grade of approximately 2% (i.e., a 1" crown on a 14' wide road). The road shall conform to Figure 1; cross section and plans for typical road construction.

**Ditching**

Ditching shall be required on both sides of the road.

**Turnouts**

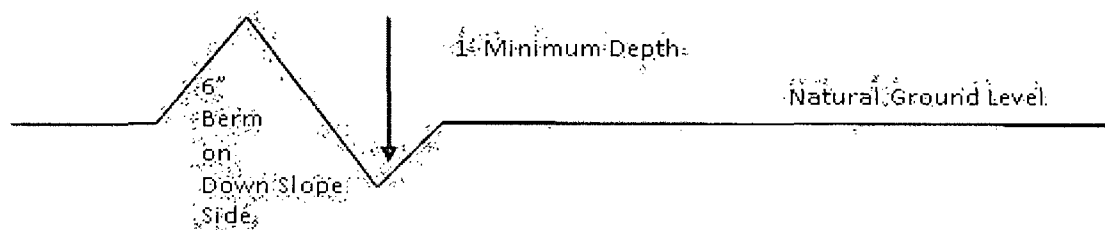
Vehicle turnouts shall be constructed on the road. Turnouts shall be intervisible with interval spacing distance less than 1000 feet. Turnouts shall conform to Figure 1; cross section and plans for typical road construction.

**Drainage**

Drainage control systems shall be constructed on the entire length of road (e.g. ditches, sidehill out sloping and insloping, lead-off ditches, culvert installation, and low water crossings).

A typical lead-off ditch has a minimum depth of 1 foot below and a berm of 6 inches above natural ground level. The berm shall be on the down-slope side of the lead-off ditch.

#### **Cross Section of a Typical Lead-off Ditch**



All lead-off ditches shall be graded to drain water with a 1 percent minimum to 3 percent maximum ditch slope. The spacing interval are variable for lead-off ditches and shall be determined according to the formula for spacing intervals of lead-off ditches, but may be amended depending upon existing soil types and centerline road slope (in %);

#### **Formula for Spacing Interval of Lead-off Ditches**

Example - On a 4% road slope that is 400 feet long, the water flow shall drain water into a lead-off ditch. Spacing interval shall be determined by the following formula:

$$400 \text{ foot road with } 4\% \text{ road slope: } \frac{400'}{4\%} + 100' = 200' \text{ lead-off ditch interval}$$

#### **Cattleguards**

An appropriately sized cattleguard sufficient to carry out the project shall be installed and maintained at fence/road crossings. Any existing cattleguards on the access road route shall be repaired or replaced if they are damaged or have deteriorated beyond practical use. The operator shall be responsible for the condition of the existing cattleguards that are in place and are utilized during lease operations.

#### **Fence Requirement**

Where entry is granted across a fence line, the fence shall be braced and tied off on both sides of the passageway prior to cutting. The operator shall notify the private surface landowner or the grazing allotment holder prior to crossing any fences.

#### **Public Access**

Public access on this road shall not be restricted by the operator without specific written approval granted by the Authorized Officer.

### Construction Steps

1. Salvage topsoil
2. Construct road

3. Redistribute topsoil
4. Revegetate slopes

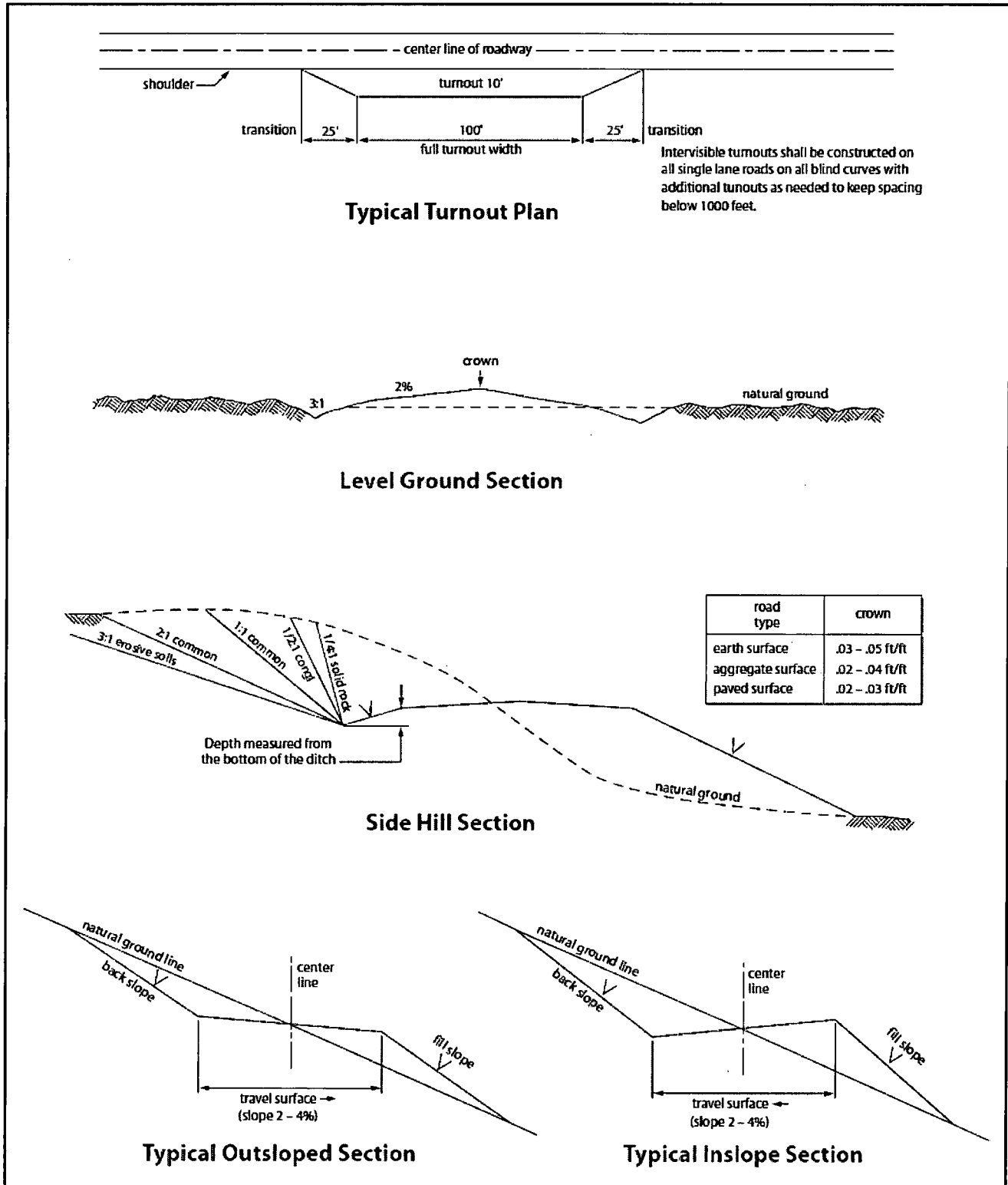


Figure 1. Cross-sections and plans for typical road sections representative of BLM resource or FS local and higher-class roads.

## VII. DRILLING

### A. DRILLING OPERATIONS REQUIREMENTS

The BLM is to be notified in advance for a representative to witness:

- a. Spudding well (minimum of 24 hours)
- b. Setting and/or Cementing of all casing strings (minimum of 4 hours)
- c. BOPE tests (minimum of 4 hours)

☒ **Eddy County**

Call the Carlsbad Field Office, 620 East Greene St., Carlsbad, NM 88220,  
(575) 361-2822

1. **Although Hydrogen Sulfide has not been reported in the area, it is always a potential hazard. If Hydrogen Sulfide is encountered, report measured amounts and formations to the BLM. Operator has stated that they will have monitoring equipment in place prior to drilling out of the surface shoe.**
2. Unless the production casing has been run and cemented or the well has been properly plugged, the drilling rig shall not be removed from over the hole without prior approval. **If the drilling rig is removed without approval – an Incident of Non-Compliance will be written and will be a “Major” violation.**
3. Floor controls are required for 3M or Greater systems. These controls will be on the rig floor, unobstructed, readily accessible to the driller and will be operational at all times during drilling and/or completion activities. Rig floor is defined as the area immediately around the rotary table; the area immediately above the substructure on which the draw works is located, this does not include the dog house or stairway area.
4. **The record of the drilling rate along with the GR/N well log run from TD to surface (horizontal well – vertical portion of hole) shall be submitted to the BLM office as well as all other logs run on the borehole 30 days from completion. If available, a digital copy of the logs is to be submitted in addition to the paper copies. The Rustler top and top and bottom of Salt are to be recorded on the Completion Report.**

### B. CASING

Changes to the approved APD casing program need prior approval if the items substituted are of lesser grade or different casing size. The Operator can exchange the components of the proposal with that of superior strength (i.e. changing from J-55 to N-80, or from 36# to 40#). Changes to the approved cement program need prior approval if the altered cement plan has less volume or strength or if the changes are substantial (i.e. Multistage tool, ECP, etc.).

**Centralizers required on surface casing per Onshore Order 2.III.B.1.f.**

**Wait on cement (WOC) time prior to drilling out for a primary cement job will be a minimum 18 hours for a water basin, 24 hours in the potash area, or 500 pounds compressive strength, whichever is greater for all casing strings. DURING THIS WOC TIME, NO DRILL PIPE, ETC. SHALL BE RUN IN THE HOLE. Provide compressive strengths including hours to reach required 500 pounds compressive strength prior to cementing each casing string. IF OPERATOR DOES NOT HAVE THE WELL SPECIFIC CEMENT DETAILS ONSITE PRIOR TO PUMPING THE CEMENT FOR EACH CASING STRING, THE WOC WILL BE 30 HOURS. See individual casing strings for details regarding lead cement slurry requirements.**

**No pea gravel permitted for remedial or fall back remedial without prior authorization from the BLM engineer.**

**Possibility of water flows in the Salado, Castile, and Delaware.**

**Possibility of lost circulation in the Rustler and Delaware.**

**Abnormal pressures may be encountered in the 3rd Bone Spring and Wolfcamp formations.**

1. The 13-3/8 inch surface casing shall be set at approximately 750 feet (in a competent bed below the Magenta Dolomite, which is a Member of the Rustler, and if salt is encountered, set casing at least 25 feet above the salt) and cemented to the surface.
  - a. If cement does not circulate to the surface, the appropriate BLM office shall be notified and a temperature survey utilizing an electronic type temperature survey with surface log readout will be used or a cement bond log shall be run to verify the top of the cement. Temperature survey will be run a minimum of six hours after pumping cement and ideally between 8-10 hours after completing the cement job.
  - b. **Wait on cement (WOC) time for a primary cement job is to include the lead cement slurry.**
  - c. Wait on cement (WOC) time for a remedial job will be a minimum of 4 hours after bringing cement to surface or 500 pounds compressive strength, whichever is greater.
  - d. If cement falls back, remedial cementing will be done prior to drilling out that string.

**Formation below the 13-3/8" shoe to be tested according to Onshore Order 2.III.B.1.i. Test to be done as a mud equivalency test using the mud weight necessary for the pore pressure of the formation below the shoe and the mud weight for the bottom of the hole. Report results to BLM office.**

2. The minimum required fill of cement behind the **9-5/8** inch intermediate casing, which shall be set at approximately **4300** feet, is:

☒ Cement to surface. If cement does not circulate see B.1.a, c-d above.

**Formation below the 9-5/8" shoe to be tested according to Onshore Order 2.III.B.1.i. Test to be done as a mud equivalency test using the mud weight necessary for the pore pressure of the formation below the shoe (not the mud weight required to prevent dissolving the salt formation) and the mud weight for the bottom of the hole. Report results to BLM office.**

**The pilot hole plugging procedure is approved as written. Note plug top on Subsequent Report sundry of drilling activities.**

**Centralizers required on horizontal leg, must be type for horizontal service and a minimum of one every other joint.**

3. The minimum required fill of cement behind the **5-1/2** inch production casing is:

**Operator has proposed DV tool at depth of 6000'. Operator is to submit sundry if DV tool depth varies by more than 100' from approved depth.**

- a. First stage to DV tool:

☒ Cement to circulate. If cement does not circulate, contact the appropriate BLM office before proceeding with second stage cement job. Operator should have plans as to how they will achieve approved top of cement on the next stage.

- b. Second stage above DV tool:

☒ Cement should tie-back at least 500 feet into previous casing string. Operator shall provide method of verification. **Excess calculates to 20% - Additional cement may be required.**

4. If hardband drill pipe is rotated inside casing, returns will be monitored for metal. If metal is found in samples, drill pipe will be pulled and rubber protectors which have a larger diameter than the tool joints of the drill pipe will be installed prior to continuing drilling operations.

## **C. PRESSURE CONTROL**

1. All blowout preventer (BOP) and related equipment (BOPE) shall comply with well control requirements as described in Onshore Oil and Gas Order No. 2 and API RP 53 Sec. 17.

2. Variance approved to use flex line from BOP to choke manifold. Check condition of flexible line from BOP to choke manifold, replace if exterior is damaged or if line fails test. Line to be as straight as possible with no hard bends and is to be anchored according to Manufacturer's requirements. The flexible hose can be exchanged with a hose of equal size and equal or greater pressure rating. **Anchor requirements, specification sheet and hydrostatic pressure test certification matching the hose in service, to be onsite for review. These documents shall be posted in the company man's trailer and on the rig floor.** If the BLM inspector questions the straightness of the hose, a BLM engineer will be contacted and will review in the field or via picture supplied by inspector to determine if changes are required (operator shall expect delays if this occurs).
3. Minimum working pressure of the blowout preventer (BOP) and related equipment (BOPE) required for drilling below the surface casing shoe shall be **5000 (5M) psi. 5M system requires an HCR valve, remote kill line and annular to match. The remote kill line is to be installed prior to testing the system and tested to stack pressure.**
4. The appropriate BLM office shall be notified a minimum of 4 hours in advance for a representative to witness the tests.
  - a. In a water basin, for all casing strings utilizing slips, these are to be set as soon as the crew and rig are ready and any fallback cement remediation has been done. The casing cut-off and BOP installation can be initiated four hours after installing the slips, which will be approximately six hours after bumping the plug. For those casing strings not using slips, the minimum wait time before cut-off is eight hours after bumping the plug. BOP/BOPE testing can begin after cut-off or once cement reaches 500 psi compressive strength (including lead when specified), whichever is greater. However, if the float does not hold, cut-off cannot be initiated until cement reaches 500 psi compressive strength (including lead when specified).
  - b. The tests shall be done by an independent service company utilizing a test plug **not a cup or J-packer.**
  - c. The test shall be run on a 5000 psi chart for a 2-3M BOP/BOP, on a 10000 psi chart for a 5M BOP/BOPE and on a 15000 psi chart for a 10M BOP/BOPE. If a linear chart is used, it shall be a one hour chart. A circular chart shall have a maximum 2 hour clock. If a twelve hour or twenty-four hour chart is used, tester shall make a notation that it is run with a two hour clock.
  - d. The results of the test shall be reported to the appropriate BLM office.
  - e. All tests are required to be recorded on a calibrated test chart. **A copy of the BOP/BOPE test chart and a copy of independent service company test will be submitted to the appropriate BLM office.**

- f. The BOP/BOPE test shall include a low pressure test from 250 to 300 psi. The test will be held for a minimum of 10 minutes if test is done with a test plug and 30 minutes without a test plug. This test shall be performed prior to the test at full stack pressure.
- g. BOP/BOPE must be tested by an independent service company within 500 feet of the top of the **Wolfcamp** formation if the time between the setting of the intermediate casing and reaching this depth exceeds 20 days. This test does not exclude the test prior to drilling out the casing shoe as per Onshore Order No. 2.

#### **D. DRILL STEM TEST**

If drill stem tests are performed, Onshore Order 2.III.D shall be followed.

#### **E. WASTE MATERIAL AND FLUIDS**

All waste (i.e. drilling fluids, trash, salts, chemicals, sewage, gray water, etc.) created as a result of drilling operations and completion operations shall be safely contained and disposed of properly at a waste disposal facility. No waste material or fluid shall be disposed of on the well location or surrounding area.

Porto-johns and trash containers will be on-location during fracturing operations or any other crew-intensive operations.

**JAM 021014**

## **VIII. PRODUCTION (POST DRILLING)**

### **A. WELL STRUCTURES & FACILITIES**

#### **Placement of Production Facilities**

Production facilities should be placed on the well pad to allow for maximum interim recontouring and revegetation of the well location.

#### **Exclosure Netting (Open-top Tanks)**

Immediately following active drilling or completion operations, the operator will take actions necessary to prevent wildlife and livestock access, including avian wildlife, to all open-topped tanks that contain or have the potential to contain salinity sufficient to cause harm to wildlife or livestock, hydrocarbons, or Resource Conservation and Recovery Act of 1976-exempt hazardous substances. At a minimum, the operator will net, screen, or cover open-topped tanks to exclude wildlife and livestock and prevent mortality. If the operator uses netting, the operator will cover and secure the open portion of the tank to prevent wildlife entry. The operator will net, screen, or cover the tanks until the operator removes the tanks from the location or the tanks no longer contain substances that could be harmful to wildlife or livestock. Use a maximum netting mesh size of 1 ½ inches. The netting must not be in contact with fluids and must not have holes or gaps.

#### **Chemical and Fuel Secondary Containment and Exclosure Screening**

The operator will prevent all hazardous, poisonous, flammable, and toxic substances from coming into contact with soil and water. At a minimum, the operator will install and maintain an impervious secondary containment system for any tank or barrel containing hazardous, poisonous, flammable, or toxic substances sufficient to contain the contents of the tank or barrel and any drips, leaks, and anticipated precipitation. The operator will dispose of fluids within the containment system that do not meet applicable state or U. S. Environmental Protection Agency livestock water standards in accordance with state law; the operator must not drain the fluids to the soil or ground. The operator will design, construct, and maintain all secondary containment systems to prevent wildlife and livestock exposure to harmful substances. At a minimum, the operator will install effective wildlife and livestock exclosure systems such as fencing, netting, expanded metal mesh, lids, and grate covers. Use a maximum netting mesh size of 1 ½ inches.

#### **Open-Vent Exhaust Stack Exclosures**

The operator will construct, modify, equip, and maintain all open-vent exhaust stacks on production equipment to prevent birds and bats from entering, and to discourage perching, roosting, and nesting. (*Recommended exclosure structures on open-vent exhaust stacks are in the shape of a cone.*) Production equipment includes, but may not be limited to, tanks, heater-treaters, separators, dehydrators, flare stacks, in-line units, and compressor mufflers.

#### **Containment Structures**

Proposed production facilities such as storage tanks and other vessels will have a secondary containment structure that is constructed to hold the capacity of 1.5 times the

largest tank, plus freeboard to account for precipitation, unless more stringent protective requirements are deemed necessary.

#### **Painting Requirement**

All above-ground structures including meter housing that are not subject to safety requirements shall be painted a flat non-reflective paint color, **Shale Green** from the BLM Standard Environmental Color Chart (CC-001: June 2008).

### **IX. INTERIM RECLAMATION**

During the life of the development, all disturbed areas not needed for active support of production operations should undergo interim reclamation in order to minimize the environmental impacts of development on other resources and uses.

Within six (6) months of well completion, operators should work with BLM surface management specialists (Jim Amos: 575-234-5909) to devise the best strategies to reduce the size of the location. Interim reclamation should allow for remedial well operations, as well as safe and efficient removal of oil and gas.

During reclamation, the removal of caliche is important to increasing the success of revegetating the site. Removed caliche that is free of contaminants may be used for road repairs, fire walls or for building other roads and locations. In order to operate the well or complete workover operations, it may be necessary to drive, park and operate on restored interim vegetation within the previously disturbed area. Disturbing revegetated areas for production or workover operations will be allowed. If there is significant disturbance and loss of vegetation, the area will need to be revegetated. Communicate with the appropriate BLM office for any exceptions/exemptions if needed.

All disturbed areas after they have been satisfactorily prepared need to be reseeded with the seed mixture provided below.

Upon completion of interim reclamation, the operator shall submit a Sundry Notices and Reports on Wells, Subsequent Report of Reclamation (Form 3160-5).

### **X. FINAL ABANDONMENT & RECLAMATION**

At final abandonment, well locations, production facilities, and access roads must undergo "final" reclamation so that the character and productivity of the land are restored.

Earthwork for final reclamation must be completed within six (6) months of well plugging. All pads, pits, facility locations and roads must be reclaimed to a satisfactory revegetated, safe, and stable condition, unless an agreement is made with the landowner or BLM to keep the road and/or pad intact.

After all disturbed areas have been satisfactorily prepared, these areas need to be revegetated with the seed mixture provided below. Seeding should be accomplished by drilling on the contour whenever practical or by other approved methods. Seeding may need to be repeated until revegetation is successful, as determined by the BLM.

Operators shall contact a BLM surface protection specialist prior to surface abandonment operations for site specific objectives (Jim Amos: 575-234-5909).

Ground-level Abandoned Well Marker to avoid raptor perching: Upon the plugging and subsequent abandonment of the well, the well marker will be installed at ground level on a plate containing the pertinent information for the plugged well.

#### Seed Mixture for LPC Sand/Shinnery Sites

The holder shall seed all disturbed areas with the seed mixture listed below. The seed mixture shall be planted in the amounts specified in pounds of pure live seed (PLS)\* per acre. There shall be no primary or secondary noxious weeds in the seed mixture. Seed will be tested and the viability testing of seed will be done in accordance with State law(s) and within nine (9) months prior to purchase. Commercial seed will be either certified or registered seed. The seed container will be tagged in accordance with State law(s) and available for inspection by the authorized officer.

Seed will be planted using a drill equipped with a depth regulator to ensure proper depth of planting where drilling is possible. The seed mixture will be evenly and uniformly planted over the disturbed area (smaller/heavier seeds have a tendency to drop the bottom of the drill and are planted first). The holder shall take appropriate measures to ensure this does not occur. Where drilling is not possible, seed will be broadcast and the area shall be raked or chained to cover the seed. When broadcasting the seed, the pounds per acre are to be doubled. The seeding will be repeated until a satisfactory stand is established as determined by the authorized officer. Evaluation of growth will not be made before completion of at least one full growing season after seeding.

Species to be planted in pounds of pure live seed\* per acre:

<u>Species</u>	<u>lb/acre</u>
Plains Bristlegrass	5lbs/A
Sand Bluestem	5lbs/A
Little Bluestem	3lbs/A
Big Bluestem	6lbs/A
Plains Coreopsis	2lbs/A
Sand Dropseed	1lbs/A

\*Pounds of pure live seed: Pounds of seed x percent purity x percent germination = pounds pure live seed