

DISTRICT I
1625 N. French Dr., Hobbs, NM 88240
Phone: (575) 393-6161 Fax: (575) 393-0720
DISTRICT II
811 S. First St., Artesia, NM 88210
Phone: (575) 748-1283 Fax: (575) 748-9720
DISTRICT III
1000 Rio Brazos Road, Aztec, NM 87410
Phone: (505) 334-6178 Fax: (505) 334-6170
DISTRICT IV
1220 S. St. Francis Dr., Santa Fe, NM 87505
Phone: (505) 476-3460 Fax: (505) 476-3462

State of New Mexico
Energy, Minerals & Natural Resources Department
OIL CONSERVATION DIVISION
1220 South St. Francis Dr.
Santa Fe, New Mexico 87505

Form C-102
Revised August 1, 2011
Submit one copy to appropriate
District Office

AMENDED REPORT

WELL LOCATION AND ACREAGE DEDICATION PLAT

API Number 30-15-40577	Pool Code 26770	Pool Name FREN; GLORIETA-YESO
Property Code 308711	Property Name CROW FEDERAL	Well Number 13H
OGRID No. 873	Operator Name APACHE CORPORATION	Elevation 3884'

UL or lot No.	Section	Township	Range	Lot Idn	Feet from the	North/South line	Feet from the	East/West line	County
M	10	17-S	31-E		858	SOUTH	250	WEST	EDDY

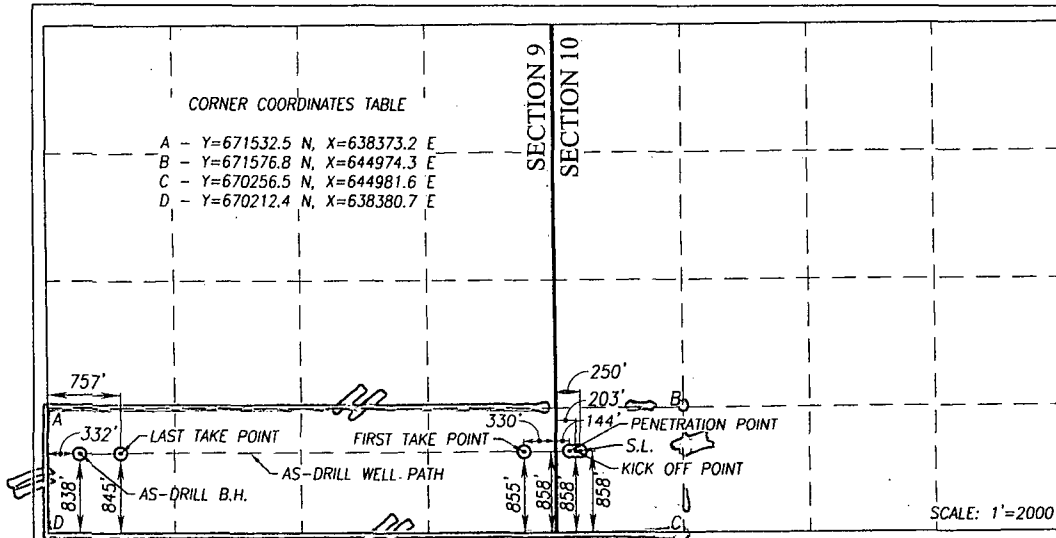
As-Drill Bottom Hole Location If Different From Surface

UL or lot No.	Section	Township	Range	Lot Idn	Feet from the	North/South line	Feet from the	East/West line	County
M	9	17-S	31-E		838	SOUTH	332	WEST	EDDY

Penetration Point Location

UL or lot No.	Section	Township	Range	Lot Idn	Feet from the	North/South line	Feet from the	East/West line	County
M	10	17-S	31-E		858	SOUTH	144	WEST	EDDY

Dedicated Acres 200	Joint or Infill	Consolidation Code	Order No.
------------------------	-----------------	--------------------	-----------



OPERATOR CERTIFICATION

I hereby certify that the information herein is true and complete to the best of my knowledge and belief, and that this organization either owns a working interest or unleased mineral interest in the land including the proposed bottom hole location or has a right to drill this well at this location pursuant to a contract with an owner of such mineral or working interest, or to a voluntary pooling agreement or a compulsory pooling order heretofore entered by the division.

Signature Date
02/25/2014

Fatima Vasquez
Printed Name

Fatima.Vasquez@apachecorp.com
E-mail Address

SURVEYOR CERTIFICATION

I hereby certify that the well location shown on this plat was plotted from field notes of actual surveys made by me or under my supervision, and that the same is true and correct to the best of my belief.

MARCH 27, 2012

Date of Survey
Signature & Seal of Professional Surveyor:

RONALD J. EIDSON
NEW MEXICO
3239
12/19/2013
Certificate Number
Ronald J. Eidson 3239
BKL JWSC W.O.: 13.13.1413

NOTE:
AS-DRILLED BOTTOM HOLE AND PENETRATION POINT PLOTTED FROM DATA FURNISHED BY
(APACHE CORPORATION; PHOENIX FINAL SURVEY REPORT, APRIL 16, 2013)