

DISTRICT I  
1025 N. French Dr., Hobbs, NM 88240  
Phone (575) 398-6161 Fax: (575) 393-0720

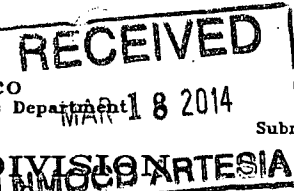
DISTRICT II  
811 S. First St., Artesia, NM 88210  
Phone (575) 744-1233 Fax: (575) 748-8720

DISTRICT III  
1000 Rio Brazos Rd., Aztec, NM 87410  
Phone (505) 334-6170 Fax: (505) 334-6170

DISTRICT IV  
1220 S. St. Francis Dr., Santa Fe, NM 87505  
Phone (505) 476-3480 Fax: (505) 476-3482

State of New Mexico  
Energy, Minerals and Natural Resources Department

OIL CONSERVATION DIVISION  
1220 South St. Francis  
Santa Fe, New Mexico 87505



Form C-102  
Revised August 1, 2011  
Submit one copy to appropriate  
District Office

WELL LOCATION AND ACREAGE DEDICATION PLAT

☒ AMENDED REPORT

*As Drilled*

|                                   |  |  |
|-----------------------------------|--|--|
| API Number<br><b>30-015-41629</b> | Pool Code<br><b>30215</b>                      | Pool Name<br><b>Hay Hollow Bone Spring</b> |
| Property Code<br><b>39958</b>     | Property Name<br><b>OWL DRAW 23 DM FED COM</b> | Well Number<br><b>2 H</b>                  |
| OGRID No.<br><b>14744</b>         | Operator Name<br><b>MEWBOURNE OIL COMPANY</b>  | Elevation<br><b>3152</b>                   |

Surface Location

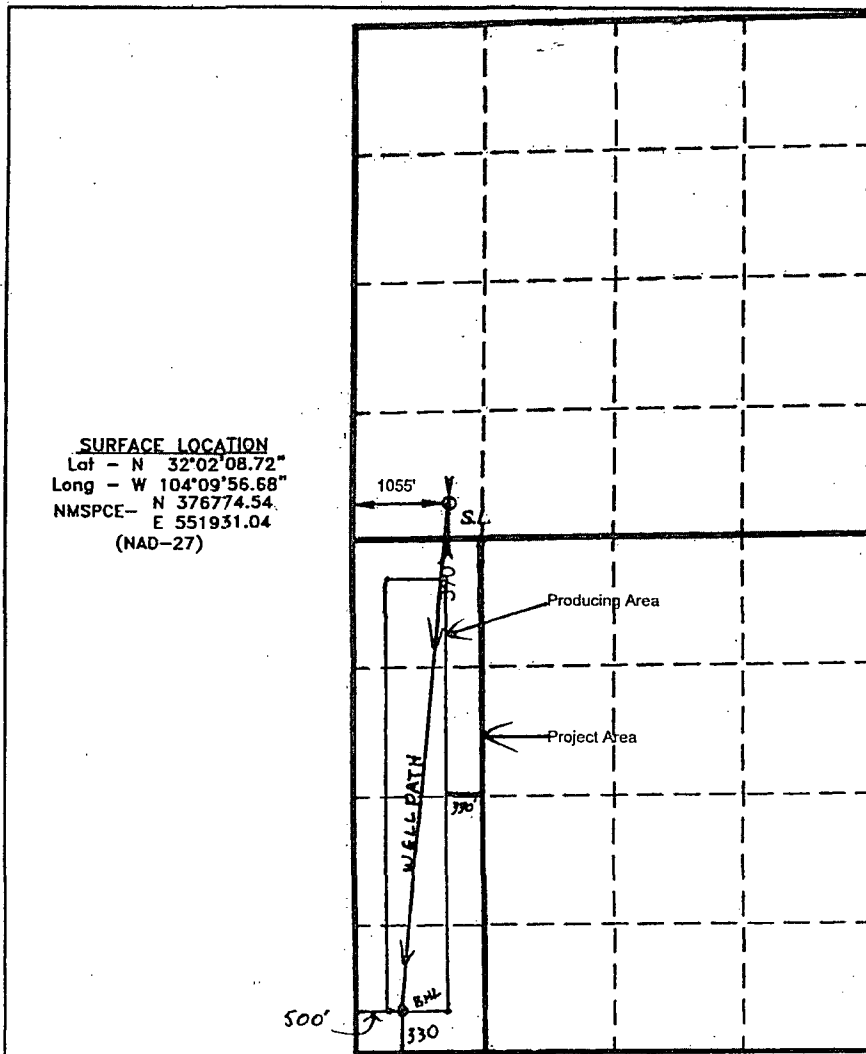
| UL or lot No. | Section | Township | Range | Lot Idn | Feet from the | North/South line | Feet from the | East/West line | County |
|---------------|---------|----------|-------|---------|---------------|------------------|---------------|----------------|--------|
| M             | 14      | 26 S     | 27 E  |         | 370           | SOUTH            | 1055          | WEST           | EDDY   |

Bottom Hole Location If Different From Surface

| UL or lot No. | Section | Township | Range | Lot Idn | Feet from the | North/South line | Feet from the | East/West line | County |
|---------------|---------|----------|-------|---------|---------------|------------------|---------------|----------------|--------|
| M             | 23      | 26 S     | 27 E  |         | 334'          | SOUTH            | 661'          | WEST           | EDDY   |

| Dedicated Acres | Joint or Infill | Consolidation Code | Order No. |
|-----------------|-----------------|--------------------|-----------|
| 160             |                 |                    |           |

NO ALLOWABLE WILL BE ASSIGNED TO THIS COMPLETION UNTIL ALL INTERESTS HAVE BEEN CONSOLIDATED  
OR A NON-STANDARD UNIT HAS BEEN APPROVED BY THE DIVISION



OPERATOR CERTIFICATION

I hereby certify that the information contained herein is true and complete to the best of my knowledge and belief, and that this organization either owns a working interest or unleased mineral interest in the land including the proposed bottom hole location or has a right to drill this well at this location pursuant to a contract with an owner of such a mineral or working interest, or to a voluntary pooling agreement or a compulsory pooling order heretofore entered by the division.

*Bradley Bishop* 6-14-13  
Signature Date

**BRADLEY BISHOP**  
Printed Name

Email Address

SURVEYOR CERTIFICATION

I hereby certify that the well location shown on this plat was plotted from field notes of actual surveys made by me or under my supervision, and that the same is true and correct to the best of my belief.

JANUARY 17 2013  
Date Surveyed  
Signature of Surveyor  
Professional Surveyor  
7977  
No. 27951  
Certificate No. 27951 Jones 7977

BASIN SURVEYS

27951