

DISTRICT I  
1625 N. French Dr., Hobbs, NM 88240  
Phone (575) 393-6161 Fax: (575) 393-0720

DISTRICT II  
811 S. First St., Artesia, NM 88210  
Phone (575) 748-1283 Fax: (575) 748-9720

DISTRICT III  
1000 Rio Brazos Rd., Aztec, NM 87410  
Phone (505) 334-6178 Fax: (505) 334-6170

DISTRICT IV  
1220 S. St. Francis Dr., Santa Fe, NM 87505  
Phone (505) 478-3460 Fax: (505) 478-3462

State of New Mexico  
Energy, Minerals and Natural Resources Department

RECEIVED

MAR 27 2014

Form C-102  
Revised August 1, 2011

Submit one copy to appropriate  
District Office

OIL CONSERVATION DIVISION  
1220 South St. Francis Dr.  
Santa Fe, New Mexico 87505

ENMOC D ARTESIA

WELL LOCATION AND ACREAGE DEDICATION PLAT

□ AMENDED REPORT

|                            |  |   |
|----------------------------|--|---|
| API Number<br>30-015-42223 | Pool Code<br>97565                           | Pool Name<br>N. Seven Rivers; Glorieta-Yeso |
| Property Code<br>12062     | Property Name<br>BOYD X STATE COM            | Well Number<br>15H                          |
| OGRID No.<br>025575        | Operator Name<br>YATES PETROLEUM CORPORATION | Elevation<br>3517                           |

Surface Location

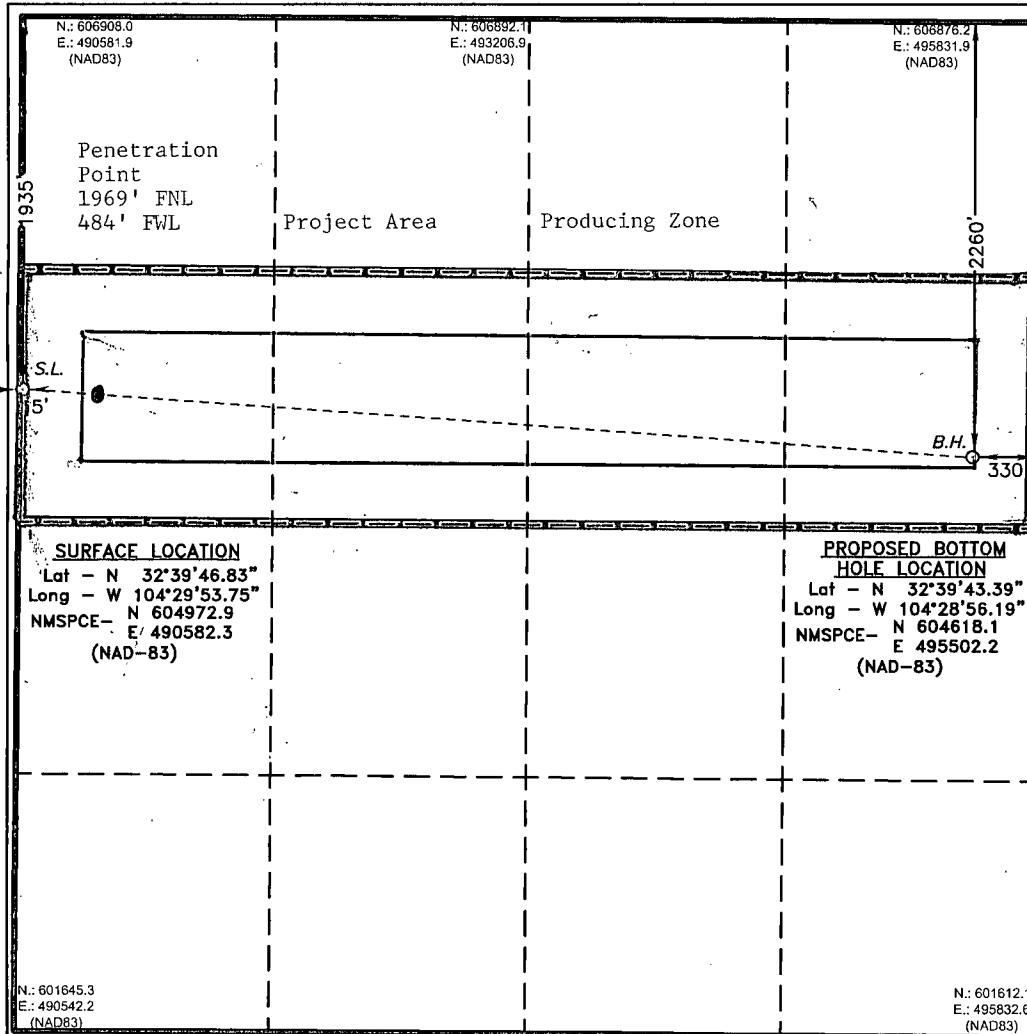
| UL or lot No. | Section | Township | Range | Lot Idn | Feet from the | North/South line | Feet from the | East/West line | County |
|---------------|---------|----------|-------|---------|---------------|------------------|---------------|----------------|--------|
| E             | 16      | 19 S     | 25 E  |         | 1935          | NORTH            | 15            | WEST           | EDDY   |

Bottom Hole Location If Different From Surface

| UL or lot No. | Section | Township | Range | Lot Idn | Feet from the | North/South line | Feet from the | East/West line | County |
|---------------|---------|----------|-------|---------|---------------|------------------|---------------|----------------|--------|
| H             | 16      | 19 S     | 25 E  |         | 2260          | NORTH            | 330           | EAST           | EDDY   |

| Dedicated Acres | Joint or Infill | Consolidation Code | Order No. |
|-----------------|-----------------|--------------------|-----------|
| 160             |                 |                    |           |

NO ALLOWABLE WILL BE ASSIGNED TO THIS COMPLETION UNTIL ALL INTERESTS HAVE BEEN CONSOLIDATED  
OR A NON-STANDARD UNIT HAS BEEN APPROVED BY THE DIVISION



**OPERATOR CERTIFICATION**  
I hereby certify that the information contained herein is true and complete to the best of my knowledge and belief, and that this organization either owns a working interest or unLEASED mineral interest in the land including the proposed bottom hole location or has a right to drill this well at this location pursuant to a contract with an owner of such a mineral or working interest, or to a voluntary pooling agreement or a compulsory pooling order heretofore entered by the division.

*Travis Hahn* 3/27/14  
Signature Date

Travis Hahn  
Printed Name

thahn@yatespetroleum.com  
Email Address

**SURVEYOR CERTIFICATION**  
I hereby certify that the well location shown on this plat was plotted from field notes of actual surveys made by me or under my supervision and that the same is true and correct to the best of my belief.

DATE SURVEYED: MAR 27 2014

Signature & Seal of Professional Surveyor  
7977

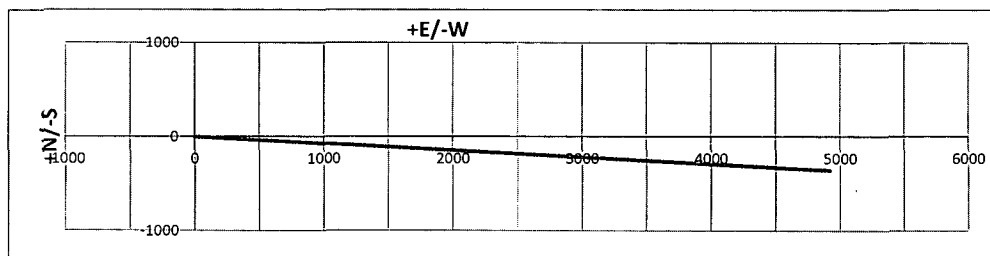
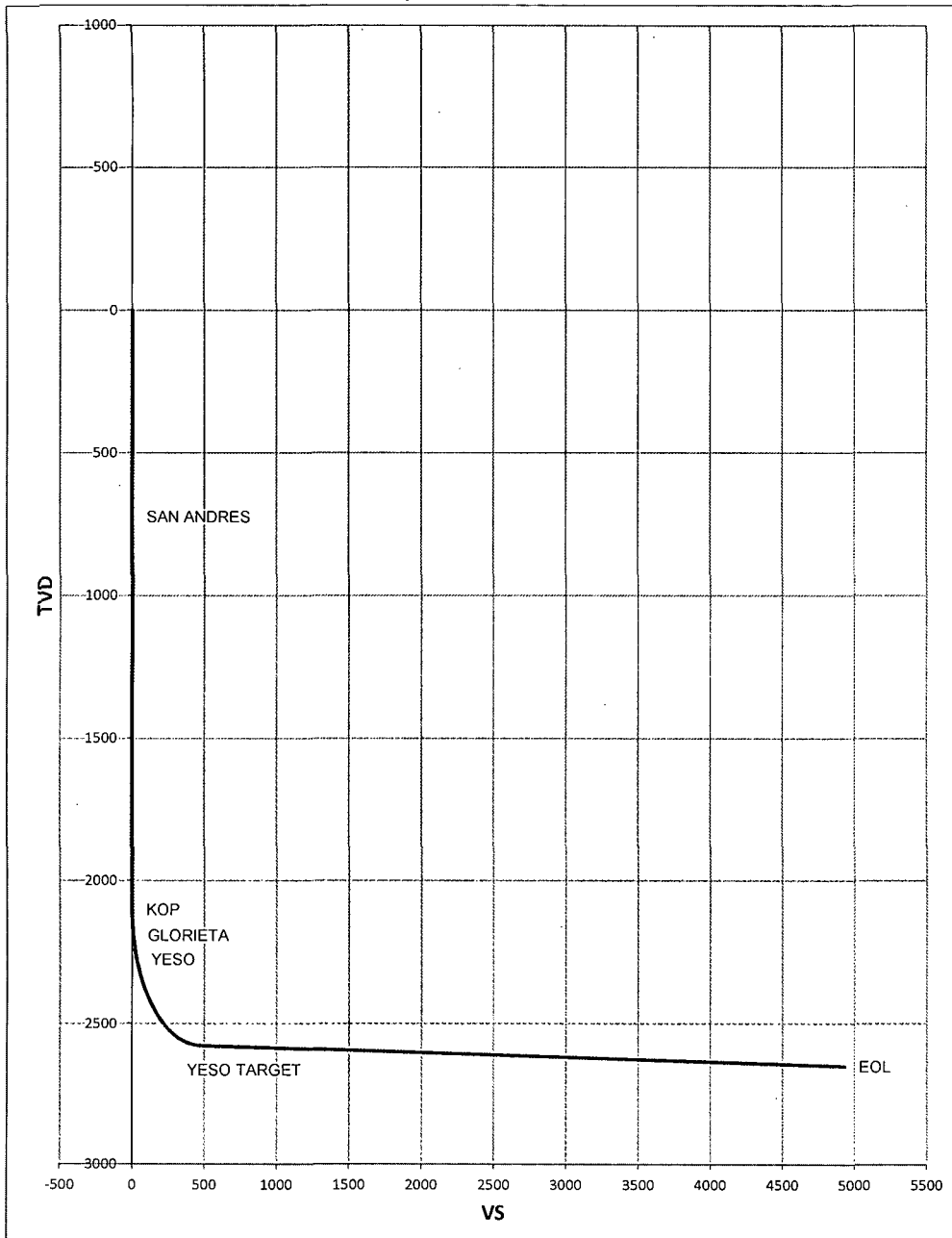
Certificate No. Gary L. Lopez 7977  
BASIN SURVEYORS

0' 500' 1000' 1500' 2000'  
SCALE: 1" = 1000'  
WO Num.: 30182

|                              |  |                  |                |                    |                          |
|------------------------------|--|------------------|----------------|--------------------|--------------------------|
| <b>Well Name:</b>            | <b>Boyd X State Com #15H</b>               | <b>Tgt N/-S:</b> | <b>-354.80</b> | <b>EOC TVD/MD:</b> | <b>2577.62 / 2842.47</b> |
| <b>Surface Location:</b>     | <b>Section 16 , Township 19S Range 25E</b> | <b>Tgt E/-W:</b> | <b>4919.90</b> | <b>VS:</b>         | <b>4932.68</b>           |
| <b>Bottom Hole Location:</b> | <b>Section 16 , Township 19S Range 25E</b> | <b>VS Az:</b>    | <b>94.12</b>   | <b>EOL TVD/MD:</b> | <b>2650.00 / 7305.43</b> |

| MD      | Inc.  | Azi.  | TVD     | N/S     | E/W     | VS      | DLS   | Comments    |
|---------|-------|-------|---------|---------|---------|---------|-------|-------------|
| 0       | 0     | 0     | 0       | 0       | 0       | 0       | 0     |             |
| 725.00  | 0.00  | 0.00  | 725.00  | 0.00    | 0.00    | 0.00    | 0.00  | SAN ANDRES  |
| 2100.22 | 0.00  | 0.00  | 2100.22 | 0.00    | 0.00    | 0.00    | 0.00  | KOP         |
| 2125.00 | 2.97  | 94.12 | 2124.99 | -0.05   | 0.64    | 0.64    | 12.00 |             |
| 2150.00 | 5.97  | 94.12 | 2149.91 | -0.19   | 2.59    | 2.59    | 12.00 |             |
| 2175.00 | 8.97  | 94.12 | 2174.69 | -0.42   | 5.83    | 5.84    | 12.00 |             |
| 2190.54 | 10.84 | 94.12 | 2190.00 | -0.61   | 8.49    | 8.52    | 12.00 | GLORIETA    |
| 2200.00 | 11.97 | 94.12 | 2199.28 | -0.75   | 10.36   | 10.39   | 12.00 |             |
| 2225.00 | 14.97 | 94.12 | 2223.58 | -1.17   | 16.17   | 16.21   | 12.00 |             |
| 2250.00 | 17.97 | 94.12 | 2247.56 | -1.68   | 23.24   | 23.30   | 12.00 |             |
| 2275.00 | 20.97 | 94.12 | 2271.12 | -2.28   | 31.55   | 31.64   | 12.00 |             |
| 2278.08 | 21.34 | 94.12 | 2274.00 | -2.36   | 32.66   | 32.75   | 12.00 | YESO        |
| 2300.00 | 23.97 | 94.12 | 2294.22 | -2.96   | 41.08   | 41.19   | 12.00 |             |
| 2325.00 | 26.97 | 94.12 | 2316.79 | -3.74   | 51.81   | 51.94   | 12.00 |             |
| 2350.00 | 29.97 | 94.12 | 2338.76 | -4.59   | 63.69   | 63.86   | 12.00 |             |
| 2375.00 | 32.97 | 94.12 | 2360.08 | -5.53   | 76.71   | 76.91   | 12.00 |             |
| 2400.00 | 35.97 | 94.12 | 2380.69 | -6.55   | 90.82   | 91.06   | 12.00 |             |
| 2425.00 | 38.97 | 94.12 | 2400.53 | -7.64   | 105.99  | 106.27  | 12.00 |             |
| 2450.00 | 41.97 | 94.12 | 2419.54 | -8.81   | 122.18  | 122.49  | 12.00 |             |
| 2475.00 | 44.97 | 94.12 | 2437.68 | -10.05  | 139.33  | 139.69  | 12.00 |             |
| 2500.00 | 47.97 | 94.12 | 2454.90 | -11.35  | 157.41  | 157.82  | 12.00 |             |
| 2525.00 | 50.97 | 94.12 | 2471.14 | -12.72  | 176.36  | 176.82  | 12.00 |             |
| 2550.00 | 53.97 | 94.12 | 2486.37 | -14.14  | 196.13  | 196.64  | 12.00 |             |
| 2575.00 | 56.97 | 94.12 | 2500.53 | -15.63  | 216.67  | 217.24  | 12.00 |             |
| 2600.00 | 59.97 | 94.12 | 2513.60 | -17.16  | 237.93  | 238.55  | 12.00 |             |
| 2625.00 | 62.97 | 94.12 | 2525.54 | -18.74  | 259.83  | 260.51  | 12.00 |             |
| 2650.00 | 65.97 | 94.12 | 2536.31 | -20.36  | 282.33  | 283.06  | 12.00 |             |
| 2675.00 | 68.97 | 94.12 | 2545.89 | -22.02  | 305.36  | 306.15  | 12.00 |             |
| 2700.00 | 71.97 | 94.12 | 2554.25 | -23.72  | 328.86  | 329.71  | 12.00 |             |
| 2725.00 | 74.97 | 94.12 | 2561.36 | -25.44  | 352.76  | 353.68  | 12.00 |             |
| 2750.00 | 77.97 | 94.12 | 2567.20 | -27.19  | 377.00  | 377.98  | 12.00 |             |
| 2775.00 | 80.97 | 94.12 | 2571.77 | -28.96  | 401.52  | 402.56  | 12.00 |             |
| 2800.00 | 83.97 | 94.12 | 2575.04 | -30.74  | 426.23  | 427.34  | 12.00 |             |
| 2825.00 | 86.97 | 94.12 | 2577.02 | -32.53  | 451.09  | 452.26  | 12.00 |             |
| 2842.47 | 89.07 | 94.12 | 2577.62 | -33.79  | 468.51  | 469.72  | 12.00 | YESO TARGET |
| 7305.43 | 89.07 | 94.12 | 2650.00 | -354.80 | 4919.90 | 4932.68 | 0.00  | EOL         |

Boyd X State Com #15H



Yates Petroleum Corporation  
105 S. Fourth Street  
Artesia, NM 88210

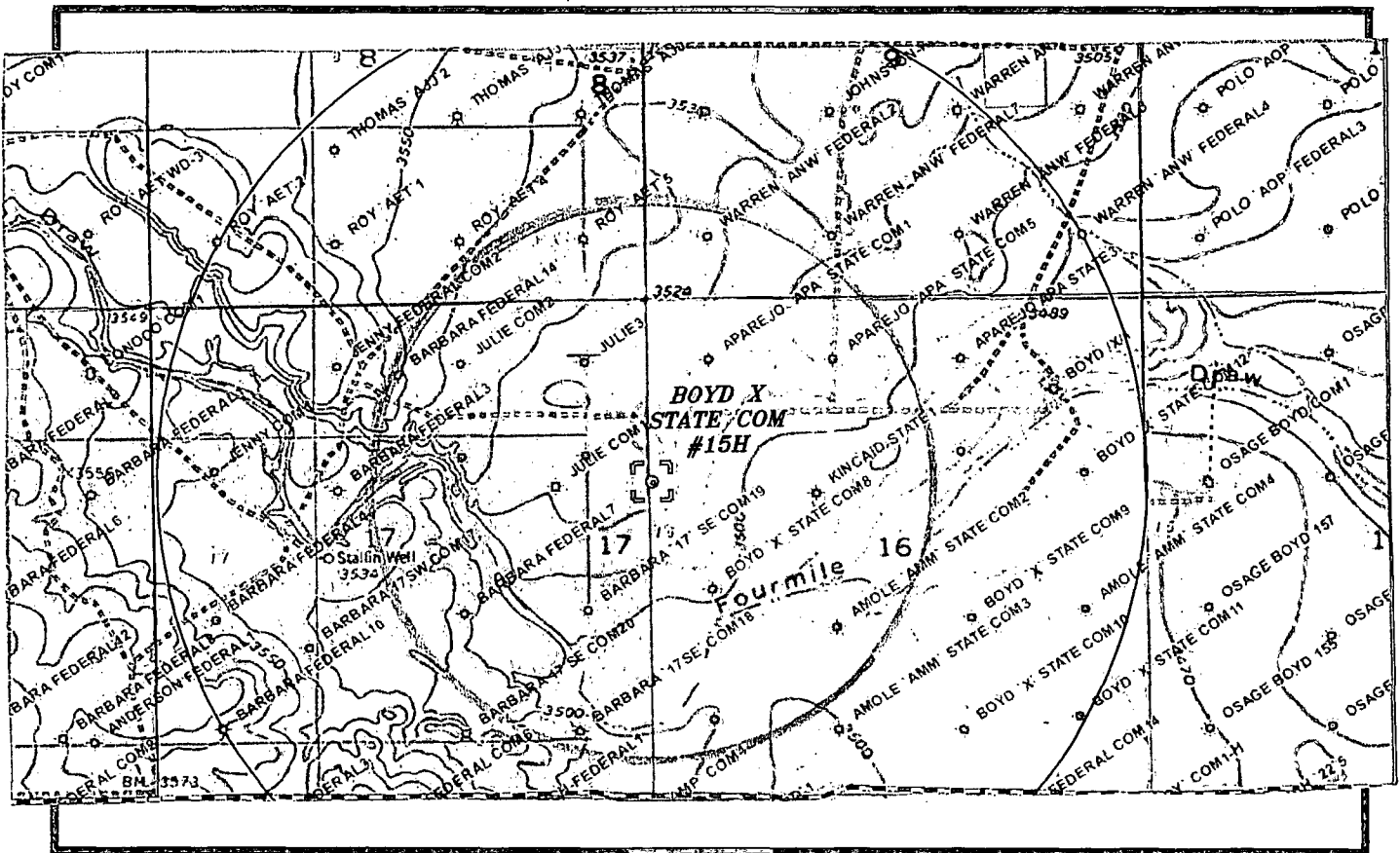
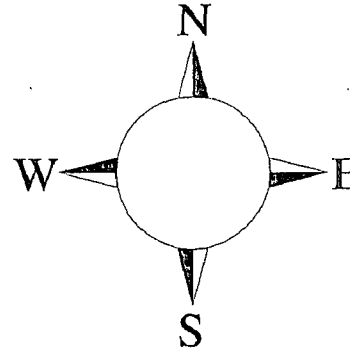
Hydrogen Sulfide (H<sub>2</sub>S) Contingency Plan

For

Boyd X State Com 15H  
1935' FNL & 15' FWL  
Section 16, T19S-R25E  
Eddy County NM

## Boyd X State Com 15h

This is an open drilling site. H<sub>2</sub>S monitoring equipment and emergency response equipment will be used within 500' of zones known to contain H<sub>2</sub>S, including warning signs, wind indicators and H<sub>2</sub>S monitor.



Assumed 100 ppm ROE = 3000'  
100 ppm H<sub>2</sub>S concentration shall trigger activation of this plan.

## Emergency Procedures

In the case of a release of gas containing H<sub>2</sub>S, the first responder(s) must isolate the area and prevent entry by other persons into the 100 ppm ROE. Additionally the first responder(s) must evacuate any public places encompassed by the 100 ppm ROE. First responder(s) must take care not to injure themselves during this operation. Company and/or local officials must be contacted to aid in this operation. Evacuation of the public should be beyond the 100 ppm ROE.

All responders must have training in the detection of H<sub>2</sub>S, measures for protection against the gas, equipment used for protection and emergency response. Additionally, responders must be equipped with H<sub>2</sub>S monitors and air packs in order to control the release. Use the "buddy system" to ensure no injuries during the response.

## Ignition of Gas Source

Should control of the well be considered lost and ignition considered, take care to protect against exposure to Sulfur Dioxide (SO<sub>2</sub>). Intentional ignition must be coordinated with the NMOCD and local officials. Additionally the NM State Police may become involved. NM State Police shall be the Incident Command on scene of any major release. Take care to protect downwind whenever there is an ignition of the gas

## Characteristics of H<sub>2</sub>S and SO<sub>2</sub>

| Common Name      | Chemical Formula | Specific Gravity | Threshold Limit | Hazardous Limit | Lethal Concentration |
|------------------|------------------|------------------|-----------------|-----------------|----------------------|
| Hydrogen Sulfide | H <sub>2</sub> S | 1.189<br>Air = 1 | 10 ppm          | 100 ppm/hr      | 600 ppm              |
| Sulfur Dioxide   | SO <sub>2</sub>  | 2.21<br>Air = 1  | 2 ppm           | N/A             | 1000 ppm             |

## Contacting Authorities

YPC personnel must liaison with local and state agencies to ensure a proper response to a major release. Additionally, the OCD must be notified of the release as soon as possible but no later than 4 hours. Agencies will ask for information such as type and volume of release, wind direction, location of release, etc. Be prepared with all information available. The following call list of essential and potential responders has been prepared for use during a release. YPC Company response must be in coordination with the State of New Mexico's 'Hazardous Materials Emergency Response Plan' (HMER)

## ***Yates Petroleum Corporation Phone Numbers***

---

|   |                |
|---|----------------|
| YPC Office .....                                    | (575) 748-1471 |
| Wade Bennett/Prod Superintendent .....              | (575) 748-4236 |
| LeeRoy Richards/Assistant Prod Superintendent ..... | (575) 748-4228 |
| Mike Larkin/Drilling .....                          | (575) 748-4222 |
| Paul Hanes/Prod. Foreman/Roswell .....              | (575) 624-2805 |
| Tim Bussell/Drilling Superintendent .....           | (575) 748-4221 |
| Artesia Answering Service .....                     | (575) 748-4302 |
| (During non-office hours)                           |                |

### **Agency Call List**

#### **Eddy County (575)**

##### **Artesia**

|   |          |
|---|----------|
| State Police.....                               | 746-2703 |
| City Police.....                                | 746-2703 |
| Sheriff's Office.....                           | 746-9888 |
| Ambulance .....                                 | 911      |
| Fire Department.....                            | 746-2701 |
| LEPC (Local Emergency Planning Committee) ..... | 746-2122 |
| NMOCD.....                                      | 748-1283 |

##### **Carlsbad**

|   |                   |
|---|-------------------|
| State Police.....                                   | 885-3137          |
| City Police.....                                    | 885-2111          |
| Sheriff's Office .....                              | 887-7551          |
| Ambulance .....                                     | 911               |
| Fire Department.....                                | 885-2111          |
| LEPC (Local Emergency Planning Committee).....      | 887-3798          |
| US Bureau of Land Management.....                   | 887-6544          |
| New Mexico Emergency Response Commission (Santa Fe) | (505)476-9600     |
| 24 HR .....   | (505) 827-9126    |
| New Mexico State Emergency Operations Center.....   | (505) 476-9635    |
| National Emergency Response Center (Washington, DC) | ...(800) 424-8802 |

##### **Other**

|   |                                  |
|---|----------------------------------|
| Boots & Coots IWC .....                                   | 1-800-256-9688 or (281) 931-8884 |
| Cudd Pressure Control.....                                | (915) 699-0139 or (915) 563-3356 |
| Halliburton .....   | (575) 746-2757                   |
| B. J. Services.....                                       | (575) 746-3569                   |
|   |                                  |
| Flight For Life -4000 24th St, Lubbock, TX .....          | (806) 743-9911                   |
| Aerocare -Rr 3 Box 49f, Lubbock, TX .....                 | (806) 747-8923                   |
| Med Flight Air Amb 2301 Yale Blvd SE #D3, Albuq, NM ..... | (505) 842-4433                   |
| S B Air Med Svc 2505 Clark Carr Loop SE, Albuq, NM .....  | (505) 842-4949                   |