

RECEIVED
APR 09 2014UNITED STATES
DEPARTMENT OF THE INTERIOR
BUREAU OF LAND MANAGEMENT

OCD Artesia

FORM APPROVED
OMB NO. 1004-0135
Expires: July 31, 2010SUNDRY NOTICES AND REPORTS ON WELLS
Do not use this form for proposals to drill or to re-enter an
abandoned well. Use form 3160-3 (APD) for such proposals.

SUBMIT IN TRIPLICATE - Other instructions on reverse side.

5. Lease Serial No. NMNM54183
6. If Indian, Allottee or Tribe Name
7. If Unit or CA/Agreement, Name and/or No. NMNM104032
8. Well Name and No. LYNX 19 FED COM 1
9. API Well No. 30-015-30841-00-S1
10. Field and Pool, or Exploratory N TURKEY TRACK
11. County or Parish, and State EDDY COUNTY, NM

1. Type of Well <input type="checkbox"/> Oil Well <input checked="" type="checkbox"/> Gas Well <input type="checkbox"/> Other	2. Name of Operator READ & STEVENS INCORPORATED	Contact: TIM COLLIER E-Mail: tcollier@read-stevens.com
3a. Address ROSWELL, NM 88202	3b. Phone No. (include area code) Ph: 575-622-3770 Fx: 575-622-8643	10. Field and Pool, or Exploratory N TURKEY TRACK
4. Location of Well (Footage, Sec., T., R., M., or Survey Description) Sec 19 T18S R29E SWNE 1680FNL 1980FEL	11. County or Parish, and State EDDY COUNTY, NM	

SEE ATTACHED FOR
CONDITIONS OF APPROVAL

12. CHECK APPROPRIATE BOX(ES) TO INDICATE NATURE OF NOTICE, REPORT, OR OTHER DATA

TYPE OF SUBMISSION	TYPE OF ACTION			
<input checked="" type="checkbox"/> Notice of Intent	<input type="checkbox"/> Acidize	<input type="checkbox"/> Deepen	<input type="checkbox"/> Production (Start/Resume)	<input type="checkbox"/> Water Shut-Off
<input type="checkbox"/> Subsequent Report	<input type="checkbox"/> Alter Casing	<input type="checkbox"/> Fracture Treat	<input type="checkbox"/> Reclamation	<input type="checkbox"/> Well Integrity
<input type="checkbox"/> Final Abandonment Notice	<input type="checkbox"/> Casing Repair	<input type="checkbox"/> New Construction	<input type="checkbox"/> Recomplete	<input type="checkbox"/> Other
	<input type="checkbox"/> Change Plans	<input checked="" type="checkbox"/> Plug and Abandon	<input type="checkbox"/> Temporarily Abandon	
	<input type="checkbox"/> Convert to Injection	<input type="checkbox"/> Plug Back	<input type="checkbox"/> Water Disposal	

13. Describe Proposed or Completed Operation (clearly state all pertinent details, including estimated starting date of any proposed work and approximate duration thereof. If the proposal is to deepen directionally or recomple horizontally, give subsurface locations and measured and true vertical depths of all pertinent markers and zones. Attach the Bond under which the work will be performed or provide the Bond No. on file with BLM/BIA. Required subsequent reports shall be filed within 30 days following completion of the involved operations. If the operation results in a multiple completion or recompletion in a new interval, a Form 3160-4 shall be filed once testing has been completed. Final Abandonment Notices shall be filed only after all requirements, including reclamation, have been completed, and the operator has determined that the site is ready for final inspection.)

1. Set CIBP @ 4770'. Dump bail 35 sxs cmt on top. Add Plug: From 3845'-3715' (Top Base Spring)
2. Circ hole w/brine & gel.
3. Find free point 5 1/2" cut & pull 5 1/2". Cut/Pull 3276'. Spot plug from 3326-3176. WOC Tag
4. Set 35' cmt in 5 1/2" stub & 35' on top of stub. WOC Tag.
5. Set plug 8 5/8" slide 50' below, 50' above.
6. Set plug base of 8 5/8" 50' out, 50' in Tag.
7. Set 35' plug 850' to isolate base of salt. Tag, set 35' plug 800' to isolate salt rustler top spot plug from 1000'-900' WOC Tag. (B/salt)
8. Set surface plug w/45 sxs. 60' surf. Spot plug from 355'-255' WOC Tag (T/salt & shoe)

SEE ATTACHED FOR
CONDITIONS OF APPROVALRECLAMATION PROCEDURE
ATTACHED

WOC 4/8/14

14. I hereby certify that the foregoing is true and correct.

Electronic Submission #238905 verified by the BLM Well Information System
For READ & STEVENS INCORPORATED, sent to the Carlsbad
Committed to AFMSS for processing by JAMES AMOS on 03/28/2014 (14JA0901SE)

Name (Printed/Typed) TIM COLLIER

Title SR. VP EXPLORATION & DEVELOPMENT

Signature (Electronic Submission)

Date 03/14/2014

THIS SPACE FOR FEDERAL OR STATE OFFICE USE

Approved By JAMES A AMOS

Title SUPERVISOR EPS

Date 03/30/2014

Conditions of approval, if any, are attached. Approval of this notice does not warrant or certify that the applicant holds legal or equitable title to those rights in the subject lease which would entitle the applicant to conduct operations thereon.

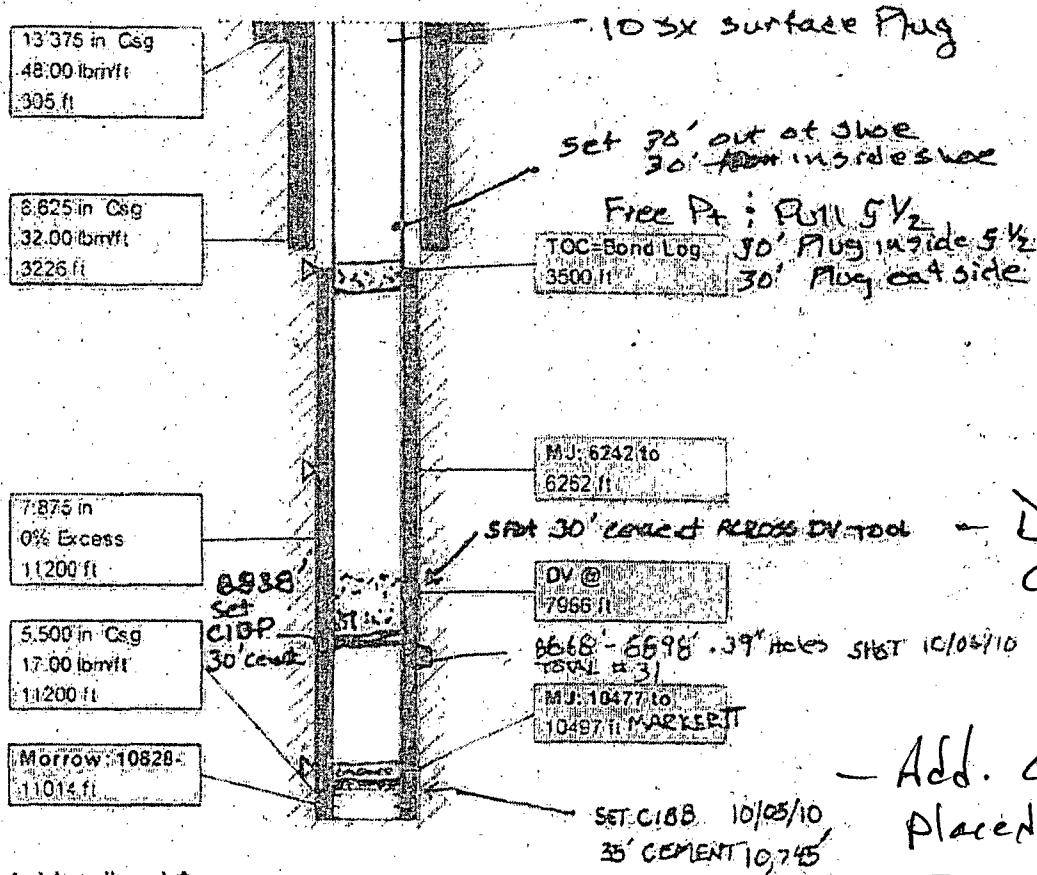
Office Carlsbad

Title 18 U.S.C. Section 1001 and Title 43 U.S.C. Section 1212, make it a crime for any person knowingly and willfully to make to any department or agency of the United States any false, fictitious or fraudulent statements or representations as to any matter within its jurisdiction.

** BLM REVISED ** BLM REVISED ** BLM REVISED ** BLM REVISED ** BLM REVISED **

Ground Level Dry Hole Marker Required.

Lynx 19 Fed Com #1
 Read Stevens Inc.
 Eddy Co., North Turkey Track
 S19 T18S R29E, 1680FNL 1980FEL
 GL 3564, KB 3581 (17'), API 30-015-30841
 DV 7966', MJ @ 10477 6242
 Exhibit A: Current Morrow completion



i-Handbook* - a mark of Schlumberger

Both addressed NOF Recomplete 2/17/12
 COA's. ?

- DVT was not covered.
 - Add. cnt was not placed to cover Top of Morrow.

J. R. R. 3.30-14

Read & Stevens, Inc.

732 363 3364

ENGINEERS CALCULATION SHEET

FOR LYNX FEB COM #1

LOCATION G. Sec 19-7-18-5, R-29-E

SUBJECT Trunkwell Field

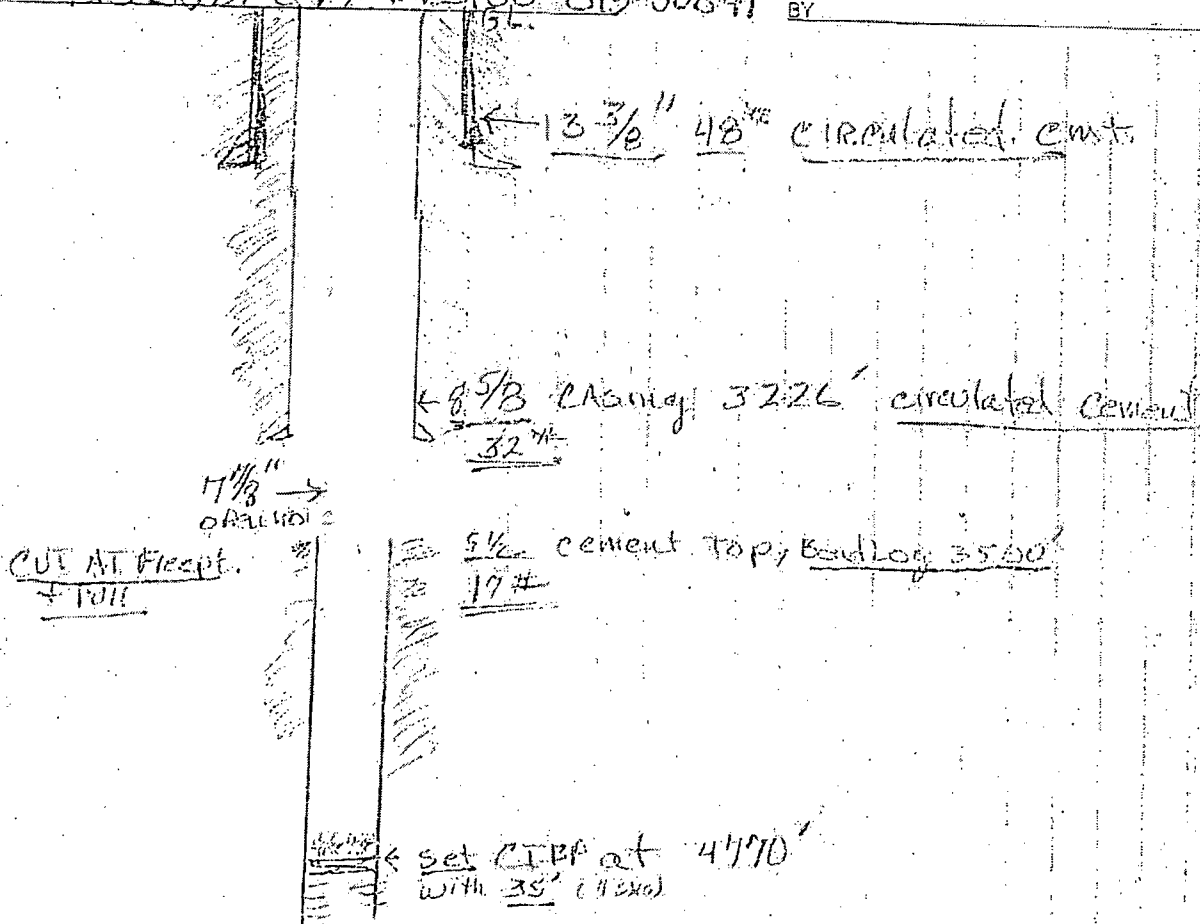
KB 3581 (17) API 30-015-30841

JOB OR AUTH. NO.

PAGE

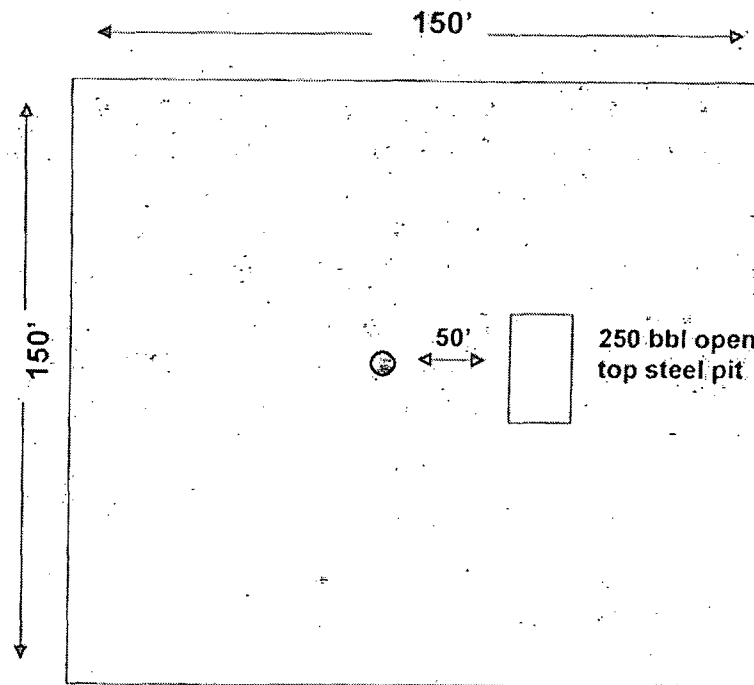
DATE

BY



- Step 1 Set CIBP 4770'
 Dump Ball 35' out TOP Rod
- Step 2 Circulate none Brine + Gel Req. min 20.5x min per 100 bbls H₂O (Trunkwell 22240)
- Step 3 Find Free point 3 1/2' cut & Pull 5 1/2'
- Step 4 Set 35' ft Cement in 5 1/2" tube 35' out top of stub & well TAG
 12 1/4 H₂O .8 lb/cu ft 4 1/2" Barrels Linear 40' = 14.58 5.103 bbls
- Step 5 Set Plug 8 5/8" above 30' Below Show 50' Above
- Step 6 Set Plug Base of 8 5/8" 50' out 50' IN TAG?
- Step 7 Set 35' Plug 850' to isolate BASE of SALT TAG?
 Set 35' Plug 800' to isolate SALT Rustler TOP @ 310 TAG
- Set Set Surface plug 45 5x?

Read & Stevens, Inc.
Lynx 19 Fed Com #1
Unit G, Section 19, T18S, R29E
Eddy County, New Mexico
API# 30-015-30841



All distances approximate
Not to scale

I. Design Plan

Above ground steel tanks will be used for the management of all plugging fluids.

II. Operations and Maintenance Plan

Basic Energy will operate and maintain all of the above ground steel tanks involved in plugging operations in a prudent manner to prevent any spills. If a leak develops, the appropriate division district office will be notified within 48 hours of the discovery and the leak will be addressed. During an upset condition the source of the spill is isolated and addressed as soon as it is discovered. Free liquids will be removed and loose topsoil will be used to stabilize the spill. The contaminated soil will be either bio-remediated or excavated and taken to an agency approved disposal facility.

III. Closure Plan

All plugging fluids will go to above ground steel tanks and will be hauled by various trucking companies to an agency approved disposal facility.

Impacted areas which will not be used for future service or operations will be reclaimed and reseeded as stated in the APD.

Read & Stevens, Inc.
Lynx 19 Fed Com #1
Unit G, Section 19, T18S, R29E
Eddy County, New Mexico
API# 30-015-30841

Equipment & Design:

Basic Energy Services will use a closed loop system in the plugging and abandonment of this well. The following equipment will be on location:

- (1) 250 bbl steel reverse tank

Operations & Maintenance:

During each day of operation, the rig's crew will inspect and closely monitor the fluids contained within the steel tank and visually monitor the release that may occur. Should a release, spill or leak occur, the NMOCD District 1 office in Hobbs (575-393-6161) will be notified, as required in NMOCD's rule 19.15.29.8.

Closure:

After plugging operations, fluids and solids will be hauled and disposed at Gandy-Marley Disposal's location, permit number NM 01-0019. Secondary site will be R360 Disposal, permit number NM 01-0006.

BUREAU OF LAND MANAGEMENT
Carlsbad Field Office
620 East Greene Street
Carlsbad, New Mexico 88220
575-234-5972

Permanent Abandonment of Federal Wells
Conditions of Approval

Failure to comply with the following Conditions of Approval may result in a Notice of Incidents of Noncompliance (INC) in accordance with 43 CFR 3163.1.

1. Plugging operations shall commence within ninety (90) days from the approval date of this Notice of Intent to Abandon.

If you are unable to plug the well by the 90th day provide this office, prior to the 90th day, with the reason for not meeting the deadline and a date when we can expect the well to be plugged. Failure to do so will result in enforcement action.

2. Notification: Contact the appropriate BLM office at least 24 hours prior to the commencing of any plugging operations. For wells in Chaves and Roosevelt County, call 575-627-0272; Eddy County, call 575-361-2822; Lea County, call 575-393-3612.

3. Blowout Preventers: A blowout preventer (BOP), as appropriate, shall be installed before commencing any plugging operation. The minimum BOP requirement is a 2M system for a well not deeper than 9,090 feet; a 3M system for a well not deeper than 13,636 feet; and a 5M system for a well not deeper than 22,727 feet.

4. Mud Requirement: Mud shall be placed between all plugs. Minimum consistency of plugging mud shall be obtained by mixing at the rate of 25 sacks (50 pounds each) of gel per 100 barrels of water. Minimum nine (9) pounds per gallon.

5. Cement Requirement: Sufficient cement shall be used to bring any required plug to the specified depth and length. Any given cement volumes on the proposed plugging procedure are merely estimates and are not final. Unless specific approval is received, no plug except the surface plug shall be less than 25 sacks of cement. In lieu of a cement plug in a cased hole, a bridge plug set within 50 feet to 100 feet above the perforations shall be capped with 25 sacks of cement. If a bailer is used to cap this plug, 35 feet of cement shall be sufficient.

Unless otherwise specified in the approved procedure, the cement plug shall consist of either Neat Class "C", for up to 7,500 feet of depth or Neat Class "H", for deeper than 7,500 feet plugs.

6. Dry Hole Marker: All casing shall be cut-off at the base of the cellar or 3 feet below final restored ground level (whichever is deeper). The well bore shall then be capped with a 4-inch pipe, 10-feet in length, 4 feet above ground and embedded in cement. The following information shall be permanently inscribed on the dry hole marker: well name and number, name of the operator, lease serial number, surveyed location (quarter-quarter section, section, township and range or other authorized survey designation acceptable to the authorized officer such as metes and bounds).

7. Subsequent Plugging Reporting: Within 30 days after plugging work is completed, file one original and five copies of the Subsequent Report of Abandonment, Form 3160-5 to BLM. The report should give in detail the manner in which the plugging work was carried out, the extent (by depths) of cement plugs placed, and the size and location (by depths) of casing left in the well. **Show date well was plugged.**

8. Trash: All trash, junk and other waste material shall be contained in trash cages or bins to prevent scattering and will be removed and deposited in an approved sanitary landfill. Burial on site is not permitted.

Following the submission and approval of the Subsequent Report of Abandonment, surface restoration conditions of approval will be developed and furnished to you.

Requirements for ground level dry hole markers

Well Identification Markers

Conditions of Approval (COA)

The BLM Carlsbad Field Office (CFO) Conditions of Approval (COA) Requires that ground level dry hole markers be placed on well within the Lesser Prairie Chicken habitat area. The dry hole markers will be to the following specifications. The operator will construct the markers as follows:

1. An 8 inch X 8 inch steel plate 1/8 to 3/16 of an inch thick is to be placed on the old dry hole marker stand pipe 2 inches from ground level, in the Lesser Prairie Chicken habitat area.
2. Steel plate may be welded or bolted approximately 2 inches from ground level on the stand pipes. If plates are bolted to the stand pipe, the person installing the plate will be required to weld a pipe collar on the plate and place a minimum of two set screws/bolt on each collar. Aluminum data plates may be bolted with minimum 1/4 inch bolt and locking nuts or self tapping fine threaded screws. A minimum of one in each corner is to be installed on each plate.
3. An 8 inch x 8 inch aluminum plate, which is 12 gauge or .080 sign material (1/8 inch aluminum plate may be used in place of the .080 plate) with the required information for that well stamped or engraved in a minimum 3/8 inch tall letter or number.
4. The following information will be stamped or engraved on the 8 inch X 8 inch aluminum plate in the following order.
 - a. First row: Operators name
 - b. Second row: Well name and number
 - c. Third row: Legal location to include 1/4 1/4, Section, Township, and range. If the legal location cannot be placed on one row it can be split into two rows with the 1/4 1/4 (example: 1980 FNL 1980 FWL) being on the top row.
 - d. Fourth row: Lease Number and API number.
 - i. Example marker plate: (attached)

NMOCD Order No. R-12965 also required the operator to notify NMOCD when this type of dry hole marker is used. This can be done on the subsequent report of abandonment which is submitted to the BLM after the well is plugged. State that a ground level dry hole marker was installed as required in the COA's from the BLM.



United States Department of the Interior

BUREAU OF LAND MANAGEMENT

Carlsbad Field Office
620 E. Greene St.
Carlsbad, New Mexico 88220-6292
www.blm.gov/nm



In Reply Refer To: 1310

Interim Reclamation Procedures

Reclamation Objective: Oil and gas development is one of many uses of the public lands and resources. While development may have a short- or long-term effect on the land, successful reclamation can ensure the effect is not permanent. During the life of the development, all disturbed areas not needed for active support of production operations should undergo "interim" reclamation in order to minimize the environmental impacts of development on other resources and uses.

Interim reclamation consists of minimizing the footprint of disturbance by reclaiming all portions of the well site not needed for production operations. The portions of the cleared well site not needed for operational and safety purposes are recontoured to a final or intermediate contour that blends with the surrounding topography as much as possible. Sufficient level area remains for setup of a workover rig and to park equipment. Topsoil is respread over areas not needed for all-weather operations. Production facilities should be clustered to maximize the opportunity for interim reclamation. In order to inspect and operate the well or complete workover operations, it may be necessary to drive, park, and operate on restored, interim vegetation within the previously disturbed area. This is generally acceptable provided damage is repaired and reclaimed following use.

To reduce final reclamation costs; maintain healthy, biologically active topsoil; and to minimize habitat, visual, and forage loss during the life of the well, all salvaged topsoil should be spread over the area of interim reclamation, rather than stockpiled.

1. The Application for Permit to Drill or Reenter (APD, Form 3160-3), Surface Use Plan of Operations must include adequate measures for stabilization and reclamation of disturbed lands. Oil and Gas operators must plan for reclamation, both interim and final, up front in the APD process as per Onshore Oil and Gas Order No. 1.
2. For wells and/or access roads not having an approved plan, or an inadequate plan for surface reclamation (either interim or final reclamation), the operator must submit a proposal describing the procedures for reclamation. For interim reclamation, the appropriate time for submittal would be when filing the Well Completion or Recompletion Report and Log (Form 3160-4). Interim reclamation is to be completed within 6 months of well completion.
3. If you have an approved Surface Use Plan of Operation and/or an approved Sundry Notice, you are free to proceed with interim reclamation as per approved APD or Sundry Notice. If you have issues or concerns, contact a BLM specialist to assist you. It would be in your interest to have a BLM specialist look at the location and access road prior to the removal of reclamation equipment to ensure that it meets BLM objectives. Upon conclusion submit a Form 3160-5, Subsequent Report of Reclamation. This will prompt a specialist to inspect the location to verify work was completed as per approved plans.
4. The approved Subsequent Report of Reclamation will be your notice that the native soils, contour and seedbed have been reestablished. If the BLM objectives have not been met the operator will be notified and corrective actions may be required.
5. It is the responsibility of the operator to monitor these locations and/or access roads until such time as the operator feels that the BLM objective has been met.

If there are any questions, please feel free to contact any of the following specialists:

Jim Amos
Supervisory Environmental Protection Specialist
575-234-5909 (Office), 575-361-2648 (Cell)

Linda Denniston
Environmental Protection Specialist
575-234-5974

Jennifer Van Curen
Environmental Protection Specialist
575-234-5905

Mike Burton
Environmental Protection Specialist
575-234-2226

Jeffery Robertson
Natural Resource Specialist

Solomon Hughes
Natural Resource Specialist
575-234-5951

Douglas Hoag
Civil Engineering Technician
575-234-5979