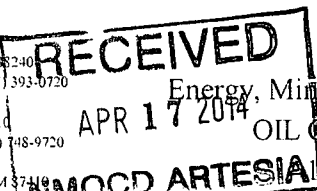


District I
1625 N. French Dr., Hobbs, NM 88240
Phone: (575) 393-6161 Fax: (575) 393-0720
District II
811 S. First St., Artesia, NM 88210
Phone: (575) 748-1283 Fax: (575) 748-9720
District III
1000 Rio Brazos Road, Aztec, NM 87410
Phone: (505) 334-6178 Fax: (505) 334-6170
District IV
1220 S. St. Francis Dr., Santa Fe, NM 87505
Phone: (505) 476-3460 Fax: (505) 476-3462



State of New Mexico
Energy, Minerals & Natural Resources Department
OIL CONSERVATION DIVISION
1220 South St. Francis Dr.
Santa Fe, NM 87505

Form C-102
Revised August 1, 2011
Submit one copy to appropriate
District Office
☐ AMENDED REPORT

WELL LOCATION AND ACREAGE DEDICATION PLAT

¹ API Number 30-015-412321	² Pool Code 96217	³ Pool Name Willowlake; Bone Spring SE
⁴ Property Code 40505	⁵ Property Name COTTONTAIL 16 STATE COM	⁶ Well Number 1H
⁷ GRID No. 6137	⁸ Operator Name DEVON ENERGY PRODUCTION COMPANY, L.P.	⁹ Elevation 2968.6

¹⁰ Surface Location

UL or lot no.	Section	Township	Range	Lot Idn	Feet from the	North/South line	Feet from the	East/West line	County
O	16	25 S	29 E		150	SOUTH	1950	EAST	EDDY

¹¹ Bottom Hole Location If Different From Surface

UL or lot no.	Section	Township	Range	Lot Idn	Feet from the	North/South line	Feet from the	East/West line	County
B	16	25 S	29 E		330	NORTH	1980	EAST	EDDY

¹² Dedicated Acres 160	¹³ Joint or Infill	¹⁴ Consolidation Code	¹⁵ Order No.
--------------------------------------	-------------------------------	----------------------------------	-------------------------

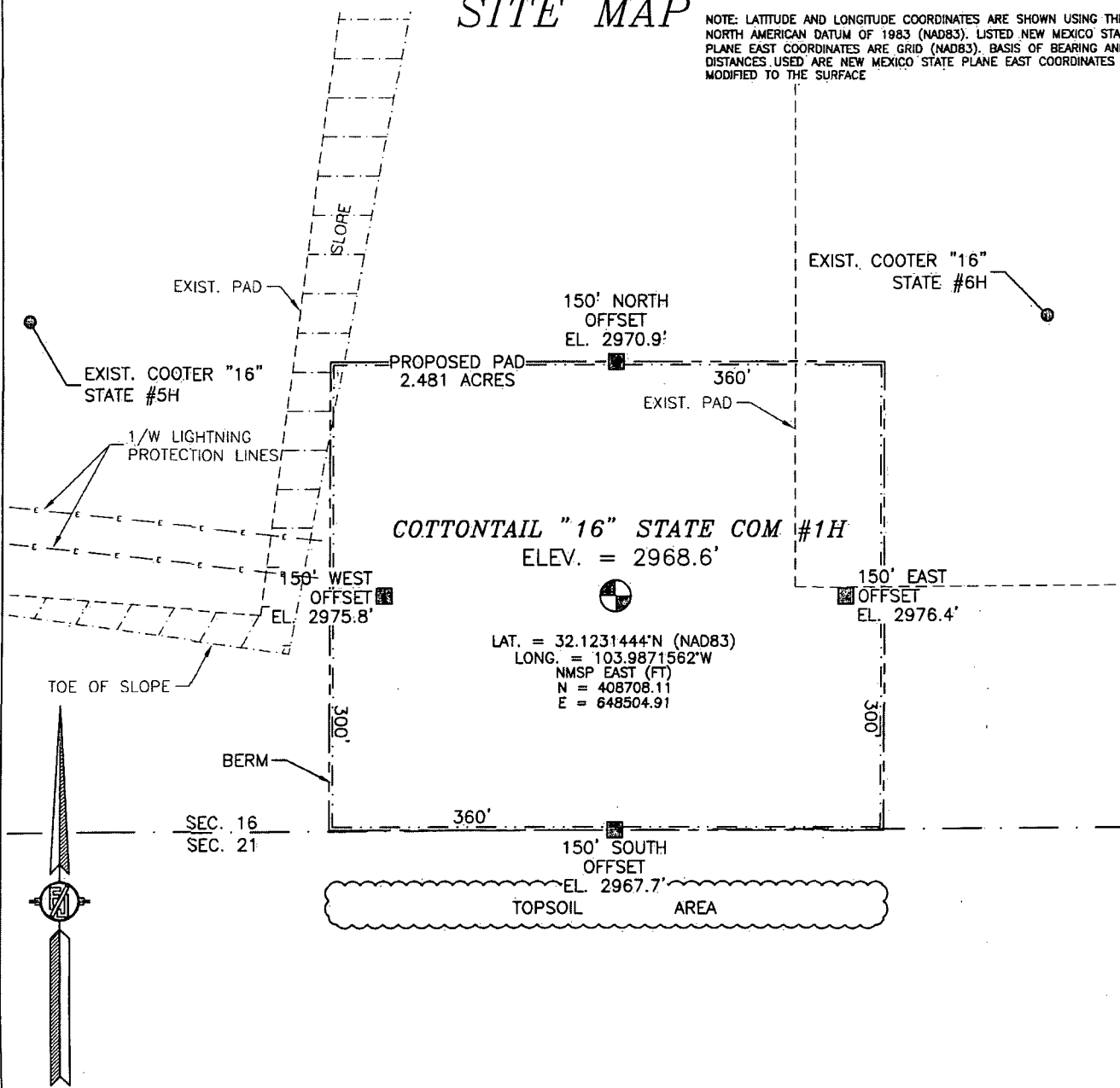
No allowable will be assigned to this completion until all interests have been consolidated or a non-standard unit has been approved by the division.

<p>N89°45'43"E 2656.80 FT</p> <p>NW CORNER SEC. 16 LAT. = 32.1373193°N LONG. = 103.9980676°W</p> <p>NMSP EAST (FT) N = 413853.94 E = 645110.93</p> <p>NOTE: LATITUDE AND LONGITUDE COORDINATES ARE SHOWN USING THE NORTH AMERICAN DATUM OF 1983 (NAD83). LISTED NEW MEXICO STATE PLANE EAST COORDINATES ARE GRID (NAD83). BASIS OF BEARING AND DISTANCES USED ARE NEW MEXICO STATE PLANE EAST COORDINATES MODIFIED TO THE SURFACE.</p> <p>W O CORNER SEC. 16 LAT. = 32.1300242°N LONG. = 103.9980455°W</p> <p>NMSP EAST (FT) N = 411200.17 E = 645126.04</p> <p>SW CORNER SEC. 16 LAT. = 32.1227221°N LONG. = 103.9980217°W</p> <p>NMSP EAST (FT) N = 408543.86 E = 645141.67</p> <p>S89°45'51"W 2657.61 FT</p>		<p>N89°45'32"E 2654.59 FT</p> <p>N O CORNER SEC. 16 LAT. = 32.1373266°N LONG. = 103.9894863°W</p> <p>NMSP EAST (FT) N = 413864.98 E = 647767.09</p> <p>NE CORNER SEC. 16 LAT. = 32.1373337°N LONG. = 103.9809121°W</p> <p>NMSP EAST (FT) N = 413876.15 E = 650421.04</p> <p>E O CORNER SEC. 16 LAT. = 32.1300386°N LONG. = 103.9808854°W</p> <p>NMSP EAST (FT) N = 411222.36 E = 650437.97</p> <p>SE CORNER SEC. 16 LAT. = 32.1227403°N LONG. = 103.9808569°W</p> <p>NMSP EAST (FT) N = 408567.46 E = 650455.48</p> <p>S89°43'37"W 2657.50 FT</p>	
<p>PROJECT AREA</p> <p>PRODUCTION AREA</p> <p>COTTONTAIL "16" STATE COM #1H ELEV. = 2968.6' LAT. = 32.123444°N (NAD83) LONG. = 103.9871562°W NMSP EAST (FT) N = 408708.11 E = 648504.9</p> <p>SURFACE LOCATION</p>		<p>¹⁷ OPERATOR CERTIFICATION</p> <p>I hereby certify that the information contained herein is true and complete to the best of my knowledge and belief, and that this organization either owns a working interest or unleased mineral interest in the land including the proposed bottom hole location or has a right to drill this well at this location pursuant to a contract with an owner of such a mineral or working interest, or to a voluntary pooling agreement or a compulsory pooling order heretofore entered by the division.</p> <p><i>Trina C. Couch</i> 4/16/14 Signature Date Trina C. Couch, Regulatory Analyst Printed Name trina.couch@dmn.com E-mail Address</p> <p>¹⁸ SURVEYOR CERTIFICATION</p> <p>I hereby certify that the well location shown on this plat was plotted from field notes of actual surveys made by me or under my supervision, and that the same is true and correct to the best of my belief.</p> <p>JUNE 1, 2013 Date of Survey</p> <p><i>[Signature]</i> Signature and Seal of Professional Surveyor Certificate Number FILMON F. JARAMILLO, PLS 12797 REGISTERED LAND SURVEY NO. 1862</p>	

SECTION 16, TOWNSHIP 25 SOUTH, RANGE 29 EAST, N.M.P.M.
EDDY COUNTY, STATE OF NEW MEXICO

SITE MAP

NOTE: LATITUDE AND LONGITUDE COORDINATES ARE SHOWN USING THE NORTH AMERICAN DATUM OF 1983 (NAD83). LISTED NEW MEXICO STATE PLANE EAST COORDINATES ARE GRID (NAD83). BASIS OF BEARING AND DISTANCES USED ARE NEW MEXICO STATE PLANE EAST COORDINATES MODIFIED TO THE SURFACE



COTTONTAIL "16" STATE COM #1H
ELEV. = 2968.6'
LAT. = 32.1231444°N (NAD83)
LONG. = 103.9871562°W
NMSP EAST (FT)
N = 408708.11
E = 648504.91

010 50 100 200

SCALE 1" = 100'

DIRECTIONS TO LOCATION

FROM US HIGHWAY 285 AND CALICHE CR 725 (LONGHORN) GO EAST ON CR 725 APPROX. 4.0 MILES, TURN LEFT ON CALICHE ROAD AND GO NORTHEAST 1.6 MILES, TURN LEFT AND GO NORTH 3.3 MILES, TURN LEFT AND GO NORTHWEST 0.3 MILES, BEND LEFT AND GO SOUTHWEST 350' TO PAD FOR COOTER "16" STATE #6H WELL AND FROM THIS WELL THE LOCATION IS 333' SOUTHWEST.

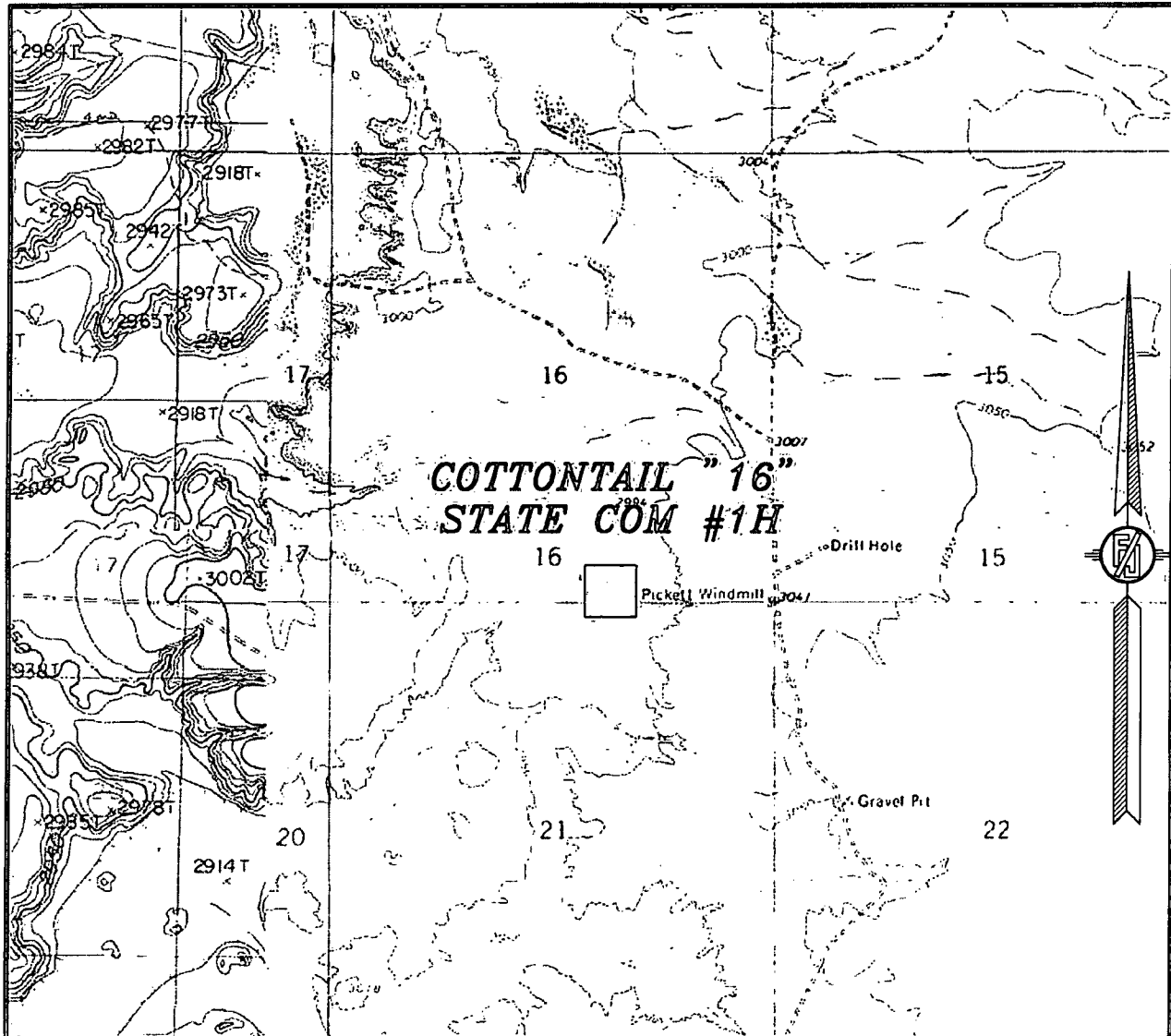
DEVON ENERGY PRODUCTION COMPANY, L.P.
COTTONTAIL "16" STATE COM #1H
LOCATED 150 FT. FROM THE SOUTH LINE
AND 150 FT. FROM THE EAST LINE OF
SECTION 16, TOWNSHIP 25 SOUTH,
RANGE 29 EAST, N.M.P.M.
EDDY COUNTY, STATE OF NEW MEXICO

JUNE 1, 2013

SURVEY NO. 1862

MADRON SURVEYING, INC. 301 SOUTH CANAL (575) 234-3341 CARLSBAD, NEW MEXICO

SECTION 16, TOWNSHIP 25 SOUTH, RANGE 29 EAST, N.M.P.M.
EDDY COUNTY, STATE OF NEW MEXICO
LOCATION VERIFICATION MAP



USGS QUAD MAP:
PIERCE CANYON

NOT TO SCALE

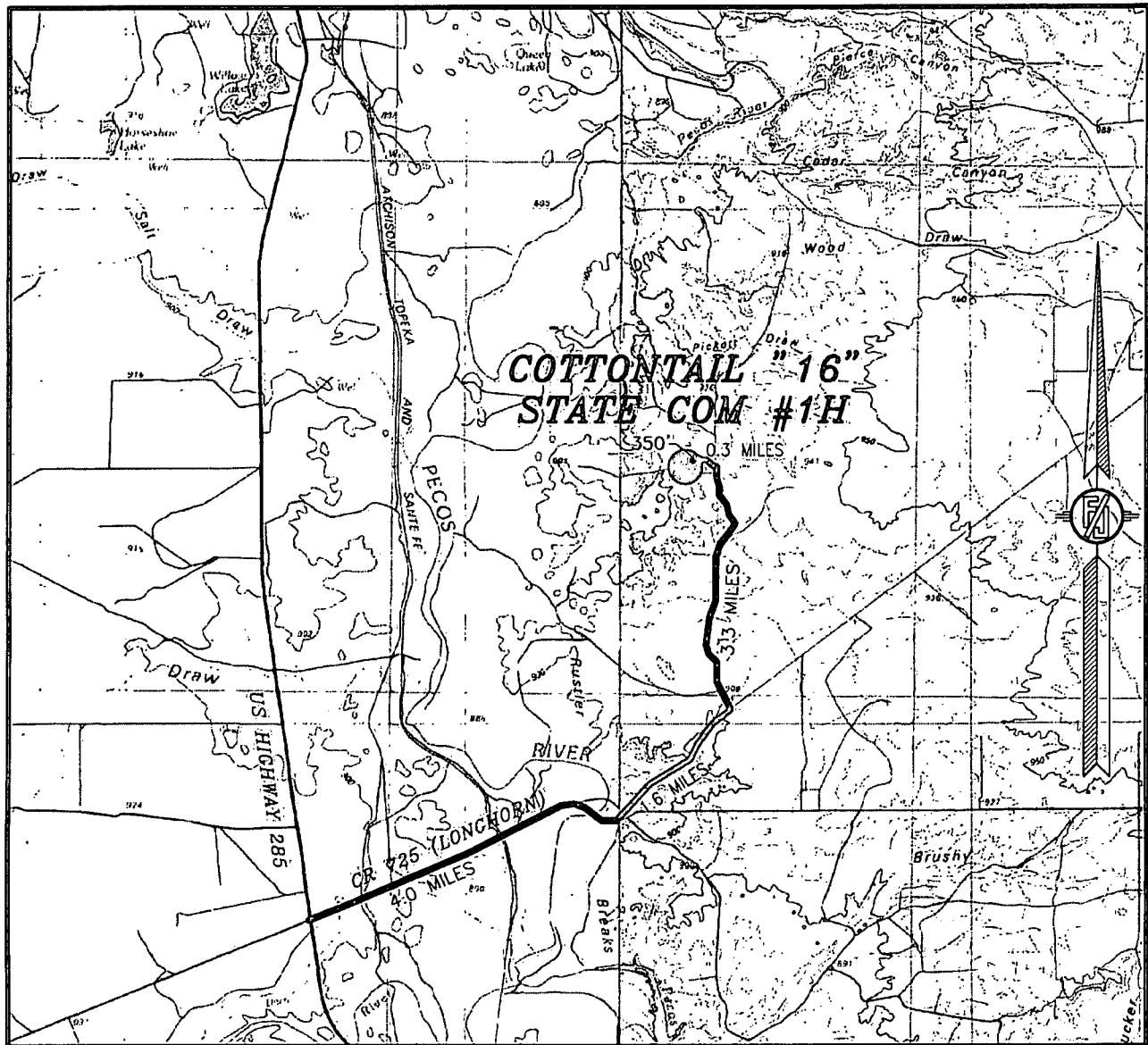
DEVON ENERGY PRODUCTION COMPANY, L.P.
COTTONTAIL "16" STATE COM #1H
LOCATED 150 FT. FROM THE SOUTH LINE
AND 1950 FT. FROM THE EAST LINE OF
SECTION 16, TOWNSHIP 25 SOUTH,
RANGE 29 EAST, N.M.P.M.
EDDY COUNTY, STATE OF NEW MEXICO

JUNE 1, 2013

MADRON SURVEYING, INC. 301 SOUTH CANAL (575) 234-3341 CARLSBAD, NEW MEXICO

SURVEY NO. 1862

SECTION 16, TOWNSHIP 25 SOUTH, RANGE 29 EAST, N.M.P.M.
EDDY COUNTY, STATE OF NEW MEXICO
VICINITY MAP



NOT TO SCALE

DEVON ENERGY PRODUCTION COMPANY, L.P.

COTTONTAIL "16" STATE COM #1H

LOCATED 150 FT. FROM THE SOUTH LINE
AND 1950 FT. FROM THE EAST LINE OF
SECTION 16, TOWNSHIP 25 SOUTH,
RANGE 29 EAST, N.M.P.M.
EDDY COUNTY, STATE OF NEW MEXICO

DIRECTIONS TO LOCATION

FROM US HIGHWAY 285 AND CALICHE CR 725 (LONGHORN) GO EAST
ON CR 725 APPROX. 4.0 MILES, TURN LEFT ON CALICHE ROAD AND
GO NORTHEAST 1.6 MILES, TURN LEFT AND GO NORTH 3.3 MILES,
TURN LEFT AND GO NORTHWEST 0.3 MILES, BEND LEFT AND GO
SOUTHWEST 350' TO PAD FOR COOTER "16" STATE #6H WELL AND
FROM THIS WELL THE LOCATION IS 333' SOUTHWEST.

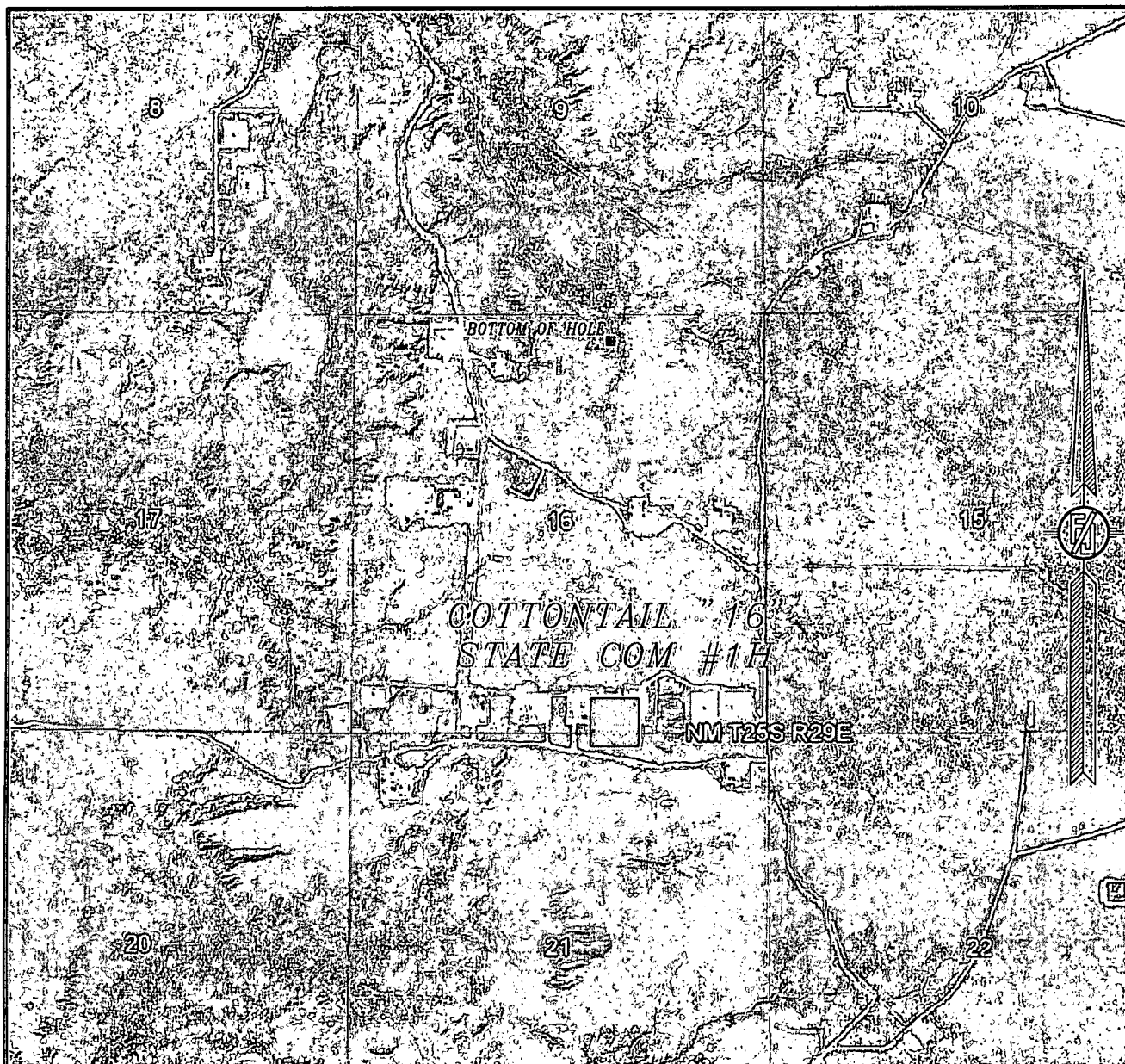
JUNE 1, 2013

SURVEY NO. 1862

MADRON SURVEYING, INC. 301 SOUTH CANAL (575) 234-3341

CARLSBAD, NEW MEXICO

SECTION 16, TOWNSHIP 25 SOUTH, RANGE 29 EAST, N.M.P.M.
EDDY COUNTY, STATE OF NEW MEXICO
AERIAL PHOTO



NOT TO SCALE
AERIAL PHOTO:
GOOGLE EARTH
JANUARY 2013

DEVON ENERGY PRODUCTION COMPANY, L.P.

COTTONTAIL "16" STATE COM #1H
LOCATED 150 FT. FROM THE SOUTH LINE
AND 1950 FT. FROM THE EAST LINE OF
SECTION 16, TOWNSHIP 25 SOUTH,
RANGE 29 EAST, N.M.P.M.
EDDY COUNTY, STATE OF NEW MEXICO

JUNE 1, 2013

SURVEY NO. 1862

MADRON SURVEYING, INC. 301 SOUTH CANAL (575) 234-3341 CARLSBAD, NEW MEXICO

Cottontail 16 State Com 1H- APD DRILLING PLAN
SKS 9-08-2013

Casing Program:

Hole Size	Hole Interval	OD Csg	Casing Interval	Weight	Collar	Grade
17-1/2"	0 - 700	13-3/8"	0 - 700	48#	ST&C	H-40
12-1/4"	700 - 2950	9-5/8"	0 - 2950	36#	LT&C	J-55
8-3/4"	2950 - 8194	5-1/2"	0 - 8090	17#	LT&C	P-110
8-3/4"	8194 - 13321	5-1/2"	8090- 13321	17#	BT&C	P-110

Mud Program:

Depth	Mud Wt.	Visc.	Fluid Loss	Type System (Fluid)
0 - 700	8.4 - 9.0	30 - 34	N/C	FW
700 - 2950	9.8 - 10.0	28 - 32	N/C	Brine
2950- 13321	8.6 - 9.0	28 - 32	N/C-12	FW

Pressure Control Equipment:

The BOP system used to drill the intermediate hole will consist of a 13-5/8" 3M Double Ram and Annular preventer. The BOP system will be tested as a 3M system prior to drilling out the surface casing shoe.

The BOP system used to drill the production hole will consist of a 13-5/8" 3M Double Ram and Annular preventer. The BOP system will be tested as a 3M system prior to drilling out the intermediate casing shoe.

In addition to the rams and annular preventer, additional BOP accessories include a kelly cock, floor safety valve, choke lines, and choke manifold rated at 3,000 psi WP.

Devon

Cottontail 16 State Com 1H

Cementing Program (cement volumes based on at least Surface 100% excess, Intermediate 75% excess and Production Casing is 25% excess)

13-3/8" Surface

Tail: 765 sacks 100% Class C Cement + 0.125 lbs/sack Poly-E-Flake + 63.9% Fresh Water, 14.8ppg

Yield: 1.33 cf/sk

TOC @ surface

9-5/8" Intermediate

Lead: 515 sacks (65:35) Class C Cement:Poz (Fly Ash): + 5% BWOW Sodium Chloride + 0.125 lbs/sack Poly-E-Flake + 6% bwoc Bentonite + 70.9% Fresh Water, 12.9 ppg

Yield: 1.85 cf/sk

TOC @ surface

Tail: 430 sacks 100% Class C Cement + 0.125 lbs/sack Poly-E-Flake + 63.5% Water, 14.8 ppg

5-1/2" Production Casing

Lead #1: 205 sacks (50:50) Class H Cement: Poz (Fly Ash) + 10% BWOC Bentonite + 1 lb/sk of Kol-Seal + 0.3% BWOC HR-601 + 0.5lb/sk D-Air 5000 + 76.4% Fresh Water, 11.9 ppg

Yield: 2.26 cf/sk

TOC @ 4750ft

Lead #2: 325 sacks (65:35) Class H Cement:Poz (Fly Ash) + 6% BWOC Bentonite + 0.25% BWOC HR-601 + 0.125 lbs/sack Poly-E-Flake + 74.1 % Fresh Water, 12.5 ppg

Yield: 1.96 cf/sk

TOC @ 6194ft

Tail: 1340 sacks (50:50) Class H Cement:Poz (Fly Ash) + 1 lb/sk Sodium Chloride + 0.5% bwoc HALAD-344 + 0.4% bwoc CFR-3 + 0.2% bwoc HR-601 + 2% bwoc Bentonite + 58.8% Fresh Water, 14.5 ppg

Yield: 1.22 cf/sk

TOC for All Strings:

Surface: 700 ft

0ft (700ft of fill of Tail)

Intermediate: 2950ft

0ft (1950ft of Lead & 1000 ft of fill of Tail)

Production Casing: 13321ft

4750ft (1444ft of Lead #1, 2000ft of fill of Lead #2 & 5127ft of fill of Tail)

ACTUAL CEMENT VOLUMES WILL BE ADJUSTED BASED ON FLUID CALIPER AND CALIPER LOG DATA.