

UNITED STATES
DEPARTMENT OF THE INTERIOR
BUREAU OF LAND MANAGEMENT

Carlsbad Field Office
OCD Artesia

FORM APPROVED
OMB NO. 1004-0135
Expires: July 31, 2010

SUNDRY NOTICES AND REPORTS ON WELLS
Do not use this form for proposals to drill or to re-enter an abandoned well. Use form 3160-3 (APD) for such proposals.

SUBMIT IN TRIPLICATE - Other instructions on reverse side.

1. Type of Well <input checked="" type="checkbox"/> Oil Well <input type="checkbox"/> Gas Well <input type="checkbox"/> Other		5. Lease Serial No. NMNM112268
2. Name of Operator DEVON ENERGY PRODUCTION CO LP		6. If Indian, Allottee or Tribe Name
3a. Address 333 WEST SHERIDAN AVE OKLAHOMA CITY, OK 73102		7. If Unit or CA/Agreement, Name and/or No.
3b. Phone No. (include area code) Ph: 405-228-7203		8. Well Name and No. PREACHER 19 FEDERAL 3H
4. Location of Well (Footage, Sec., T., R., M., or Survey Description) Sec 19 T24S R27E SWSE 0150FSL 1980FEL 32.195532 N Lat, 104.229716 W Lon		9. API Well No. 30-015-41887-00-X1
		10. Field and Pool, or Exploratory WILLOW LAKE
		11. County or Parish, and State EDDY COUNTY, NM

12. CHECK APPROPRIATE BOX(ES) TO INDICATE NATURE OF NOTICE, REPORT, OR OTHER DATA

TYPE OF SUBMISSION	TYPE OF ACTION
<input checked="" type="checkbox"/> Notice of Intent	<input type="checkbox"/> Acidize
<input type="checkbox"/> Subsequent Report	<input type="checkbox"/> Deepen
<input type="checkbox"/> Final Abandonment Notice	<input type="checkbox"/> Alter Casing
	<input type="checkbox"/> Fracture Treat
	<input type="checkbox"/> Casing Repair
	<input type="checkbox"/> New Construction
	<input type="checkbox"/> Change Plans
	<input type="checkbox"/> Plug and Abandon
	<input type="checkbox"/> Convert to Injection
	<input type="checkbox"/> Plug Back
	<input type="checkbox"/> Production (Start/Resume)
	<input type="checkbox"/> Reclamation
	<input type="checkbox"/> Recomplete
	<input type="checkbox"/> Temporarily Abandon
	<input type="checkbox"/> Water Disposal
	<input type="checkbox"/> Water Shut-Off
	<input type="checkbox"/> Well Integrity
	<input checked="" type="checkbox"/> Other Change to Original APD

13. Describe Proposed or Completed Operation (clearly state all pertinent details, including estimated starting date of any proposed work and approximate duration thereof. If the proposal is to deepen directionally or recomplete horizontally, give subsurface locations and measured and true vertical depths of all pertinent markers and zones. Attach the Bond under which the work will be performed or provide the Bond No. on file with BLM/BIA. Required subsequent reports shall be filed within 30 days following completion of the involved operations. If the operation results in a multiple completion or recompletion in a new interval, a Form 3160-4 shall be filed once testing has been completed. Final Abandonment Notices shall be filed only after all requirements, including reclamation, have been completed, and the operator has determined that the site is ready for final inspection.)

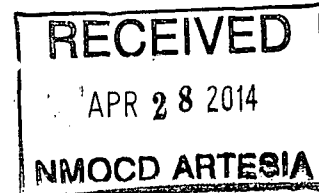
Devon Energy Production Company, L.P. respectfully requests to change the location of the approved access road for the Preacher 19 Federal 3H from:

1609 LF (SE corner)

TO

1616 LF (NE corner)

RD 4-29-14
accepted for record
NMOCD



Please see the following attachments:
C-102

Surface: Approved COAs applies for the construction of the roadway *Indm 4/21/14*

14. I hereby certify that the foregoing is true and correct. Electronic Submission #232124 verified by the BLM Well Information System For DEVON ENERGY PRODUCTION CO LP, sent to the Carlsbad Committed to AFMSS for processing by JENNIFER MASON on 02/04/2014 (14JAM0069SE)	
Name (Printed/Typed) TRINA C COUCH	Title REGULATORY ASSOCIATE
Signature (Electronic Submission)	Date 01/15/2014

THIS SPACE FOR FEDERAL OR STATE OFFICE USE

Approved By <i>Stephen J. Coffey</i>	For FIELD MANAGER	APR 21 2014	Date
Conditions of approval, if any, are attached. Approval of this notice does not warrant or certify that the applicant holds legal or equitable title to those rights in the subject lease which would entitle the applicant to conduct operations thereon.		Office CARLSBAD FIELD OFFICE	

Title 18 U.S.C. Section 1001 and Title 43 U.S.C. Section 1212, make it a crime for any person knowingly and willfully to make to any department or agency of the United States any false, fictitious or fraudulent statements or representations as to any matter within its jurisdiction.

Additional data for EC transaction #232124 that would not fit on the form

32. Additional remarks, continued

H2S Plan
Interim Reclamation Diagram

District I
1625 N. French Dr., Hobbs, NM 88240
Phone: (575) 393-6161 Fax: (575) 393-0720
District II
311 S. First St., Artesia, NM 88210
Phone: (575) 748-1283 Fax: (575) 748-9720
District III
1000 Rio Brazos Road, Aztec, NM 87410
Phone: (505) 334-6178 Fax: (505) 334-6170
District IV
1220 S. St. Francis Dr., Santa Fe, NM 87505
Phone: (505) 476-3466 Fax: (505) 476-3462

State of New Mexico
Energy, Minerals & Natural Resources Department
OIL CONSERVATION DIVISION
1220 South St. Francis Dr.
Santa Fe, NM 87505

Form C-102
Revised August 1, 2011
Submit one copy to appropriate
District Office

☐ AMENDED REPORT

WELL LOCATION AND ACREAGE DEDICATION PLAT

¹ API Number 30-015-41887	² Pool Code 96415	³ Pool Name Willow Lake West; Bone Spring
⁴ Property Code 40292	⁵ Property Name PREACHER 19 FED	⁶ Well Number 3H
⁷ OGRID No. 6137	⁸ Operator Name DEVON ENERGY PRODUCTION COMPANY, L.P.	⁹ Elevation 3310.2

¹⁰ Surface Location

UL or lot no.	Section	Township	Range	Lot Idn	Feet from the	North/South line	Feet from the	East/West line	County
O	19	24 S	27 E		150	SOUTH	1980	EAST	EDDY

¹¹ Bottom Hole Location If Different From Surface

UL or lot no.	Section	Township	Range	Lot Idn	Feet from the	North/South line	Feet from the	East/West line	County
B	19	24 S	27 E		330	NORTH	1980	EAST	EDDY

¹² Dedicated Acres 160	¹³ Joint or Infill	¹⁴ Consolidation Code	¹⁵ Order No.
--------------------------------------	-------------------------------	----------------------------------	-------------------------

No allowable will be assigned to this completion until all interests have been consolidated or a non-standard unit has been approved by the division.

<p>N89°54'30"E 2583.71 FT</p> <p>NW CORNER SEC. 19 LAT. = 32.2099189°N LONG. = 104.2380001°W NMSP EAST (FT) N = 440115.66 E = 570822.16</p>		<p>N89°27'47"E 2639.67 FT</p> <p>N Q CORNER SEC. 19 LAT. = 32.2099237°N LONG. = 104.2296481°W NMSP EAST (FT) N = 440119.79 E = 573405.24</p>		<p>NE CORNER SEC. 19 LAT. = 32.2099844°N LONG. = 104.2211156°W NMSP EAST (FT) N = 440144.53 E = 576044.15</p>	
<p>2640.69 FT</p> <p>DNF LOT 2</p>		<p>1980'</p> <p>330'</p> <p>DNF</p>		<p>2631.02 FT</p>	
<p>DNF LOT 3</p>		<p>NOTE: LATITUDE AND LONGITUDE COORDINATES ARE SHOWN USING THE NORTH AMERICAN DATUM OF 1983 (NAD83). LISTED NEW MEXICO STATE PLANE EAST COORDINATES ARE GRID (NAD83). BASIS OF BEARING AND DISTANCES USED ARE NEW MEXICO STATE PLANE EAST COORDINATES MODIFIED TO THE SURFACE.</p>		<p>2631.02 FT</p>	
<p>2640.69 FT</p> <p>DNF LOT 4</p>		<p>PREACHER "19" FED #3H ELEV. = 3310.2' LAT. = 32.1959421°N (NAD83) LONG. = 104.2275831°W NMSP EAST (FT) N = 435034.21 E = 574048.90</p>		<p>SE CORNER SEC. 19 LAT. = 32.1955231°N LONG. = 104.2211856°W NMSP EAST (FT) N = 434883.79 E = 576027.99</p>	
<p>2640.69 FT</p> <p>SW CORNER SEC. 19 LAT. = 32.1954044°N LONG. = 104.2380332°W NMSP EAST (FT) N = 434835.57 E = 570816.59</p>		<p>S Q CORNER SEC. 19 LAT. = 32.1955321°N LONG. = 104.2297161°W NMSP EAST (FT) N = 434884.39 E = 573384.25</p>		<p>2631.02 FT</p>	
<p>2573.75 FT</p>		<p>1980'</p>		<p>2639.38 FT</p>	

¹⁷ OPERATOR CERTIFICATION

I hereby certify that the information contained herein is true and complete to the best of my knowledge and belief, and that this organization either owns a working interest or unleased mineral interest in the land including the proposed bottom hole location or has a right to drill this well at this location pursuant to a contract with an owner of such a mineral or working interest, or to a voluntary pooling agreement or a compulsory pooling order heretofore entered by the division.

Trina C. Couch 1/8/14
Signature Date
Trina C. Couch, Regulatory Associate
Printed Name
trina.couch@dmn.com
E-mail Address

¹⁸ SURVEYOR CERTIFICATION

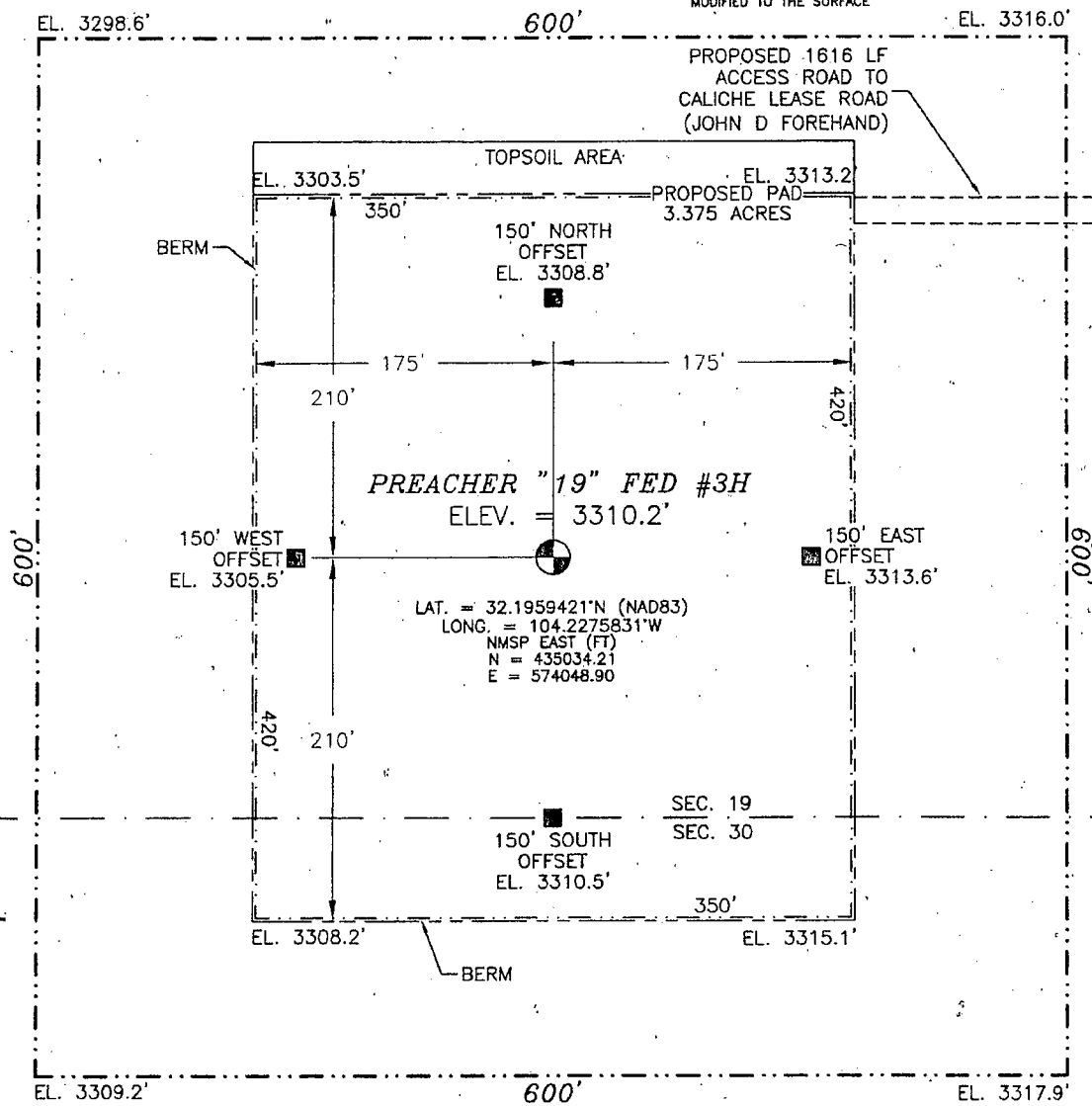
I hereby certify that the well location shown on this plat was plotted from field notes of actual surveys made by me or under my supervision, and that the same is true and correct to the best of my belief.

DECEMBER 30, 2013
Date of Survey
12797
Signature and Seal of Professional Surveyor
Certificate Number: FIDELM F. JARAMILLO, PLS 12797
SURVEY NO. 1847B

SECTION 19, TOWNSHIP 24 SOUTH, RANGE 27 EAST, N.M.P.M.
EDDY COUNTY, STATE OF NEW MEXICO

SITE MAP

NOTE: LATITUDE AND LONGITUDE COORDINATES ARE SHOWN USING THE NORTH AMERICAN DATUM OF 1983 (NAD83). LISTED NEW MEXICO STATE PLANE EAST COORDINATES ARE GRID (NAD83). BASIS OF BEARING AND DISTANCES USED ARE NEW MEXICO STATE PLANE EAST COORDINATES MODIFIED TO THE SURFACE



010 50 100 200

SCALE 1" = 100'

DIRECTIONS TO LOCATION

FROM PAVED CR 720 (BLACK RIVER VILLAGE ROAD) AND PAVED CR 748 (OLD CAVERN HIGHWAY) AND CALICHE LEASE ROAD (JOHN D FOREHAND) GO SOUTH ON CALICHE LEASE ROAD 2.5 MILES TO A PROPOSED ROAD SURVEY AND FOLLOW FLAGS WEST 1616 FT. TO THE NORTHEAST CORNER OF PROPOSED PAD FOR THIS LOCATION.

DEVON ENERGY PRODUCTION COMPANY, L.P.

PREACHER "19" FED #3H

LOCATED 150 FT. FROM THE SOUTH LINE
AND 1980 FT. FROM THE EAST LINE OF
SECTION 19, TOWNSHIP 24 SOUTH,
RANGE 27 EAST, N.M.P.M.

EDDY COUNTY, STATE OF NEW MEXICO

DECEMBER 30, 2013

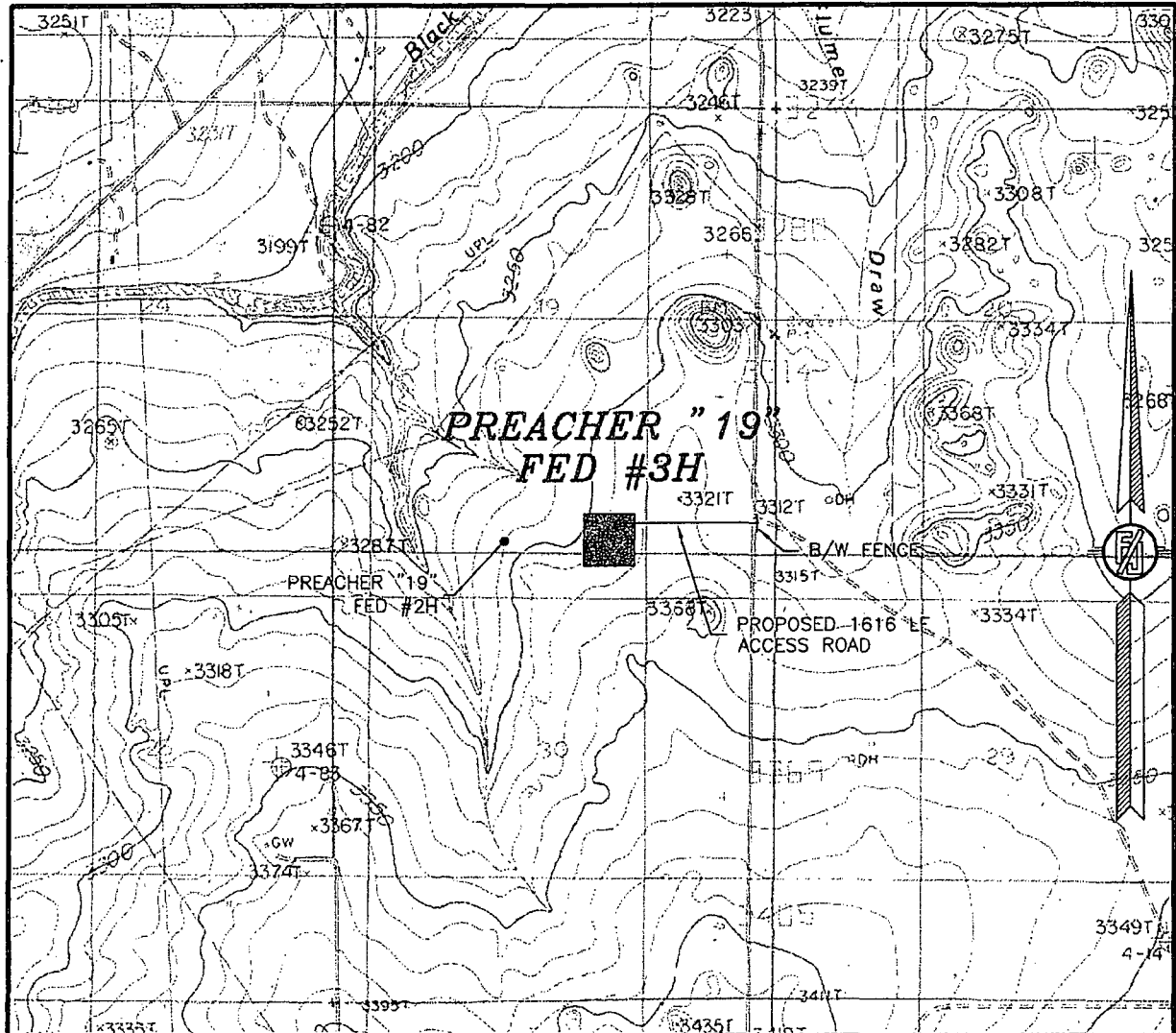
SURVEY NO. 1847B

MADRON SURVEYING, INC.

301 SOUTH CANAL
(575) 234-3341

CARLSBAD, NEW MEXICO

SECTION 19, TOWNSHIP 24 SOUTH, RANGE 27 EAST, N.M.P.M.
EDDY COUNTY, STATE OF NEW MEXICO
LOCATION VERIFICATION MAP



USGS QUAD MAP:
BOND DRAW

NOT TO SCALE

DEVON ENERGY PRODUCTION COMPANY, L.P.

PREACHER "19" FED #3H

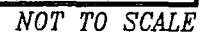
LOCATED 150 FT. FROM THE SOUTH LINE
AND 1980 FT. FROM THE EAST LINE OF
SECTION 19, TOWNSHIP 24 SOUTH,
RANGE 27 EAST, N.M.P.M.
EDDY COUNTY, STATE OF NEW MEXICO

DECEMBER 30, 2013

SURVEY NO. 1847B

MADRON SURVEYING, INC. 301 SOUTH CANAL (575) 234-3341 CARLSBAD, NEW MEXICO

VICINITY MAP



PREACHER "19" FED #3H

EDDY COUNTY, STATE OF NEW MEXICO

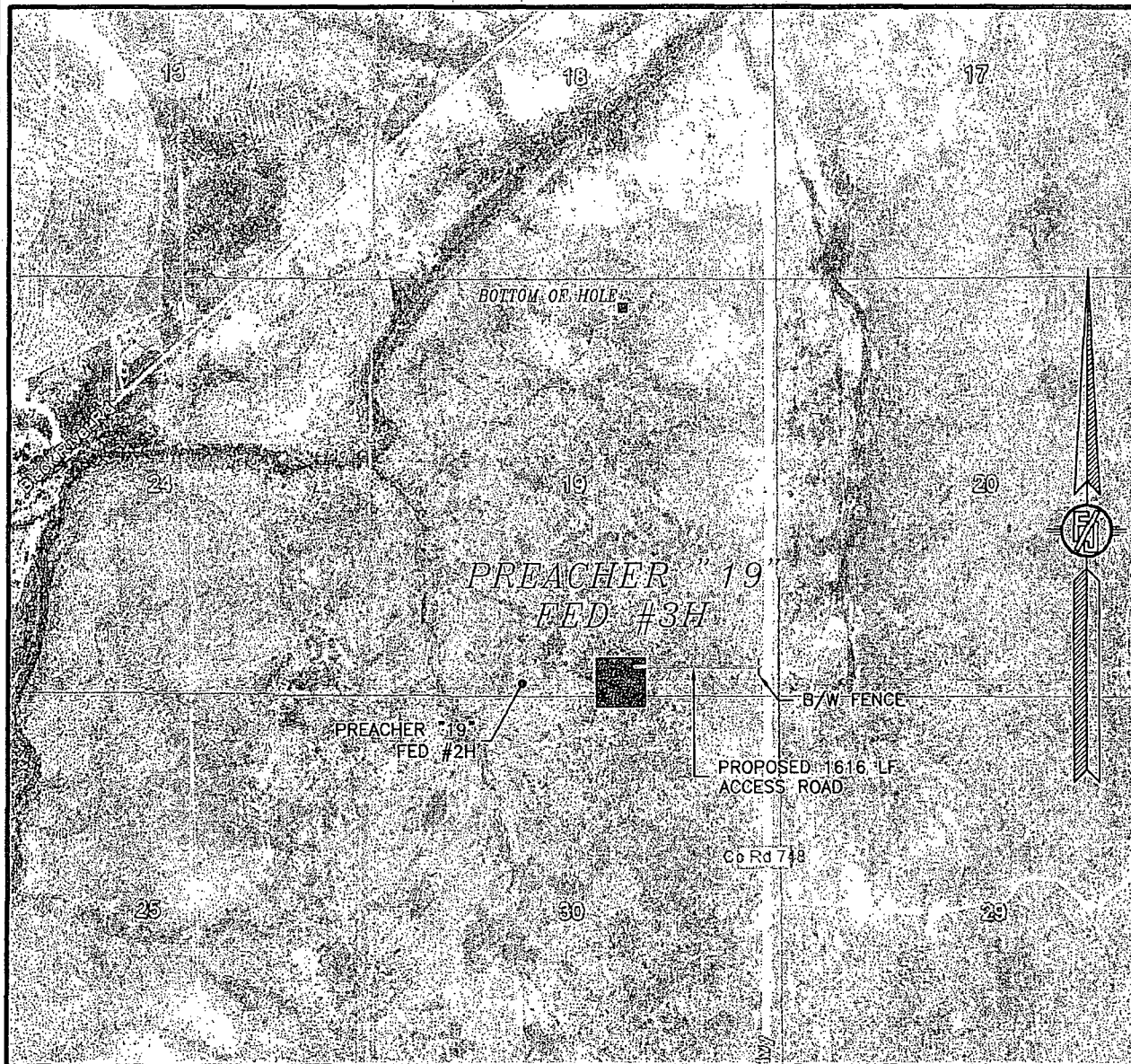
FROM PAVED CR 720 (BLACK RIVER VILLAGE ROAD) AND PAVED CR 748 (OLD CAVERN HIGHWAY) AND CALICHE LEASE ROAD (JOHN D FOREHAND) GO SOUTH ON CALICHE LEASE ROAD 2.5 MILES TO A PROPOSED ROAD SURVEY AND FOLLOW FLAGS WEST 1616 FT. TO THE NORTHEAST CORNER OF PROPOSED PAD FOR THIS LOCATION.

SURVEY NO. 1847B

CARLSBAD, NEW MEXICO

SECTION 19, TOWNSHIP 24 SOUTH, RANGE 27 EAST, N.M.P.M.
EDDY COUNTY, STATE OF NEW MEXICO

AERIAL PHOTO



NOT TO SCALE
AERIAL PHOTO:
GOOGLE EARTH
JUNE 2011

DEVON ENERGY PRODUCTION COMPANY, L.P.

PREACHER "19" FED #3H

LOCATED 150 FT. FROM THE SOUTH LINE
AND 1980 FT. FROM THE EAST LINE OF
SECTION 19, TOWNSHIP 24 SOUTH,
RANGE 27 EAST, N.M.P.M.
EDDY COUNTY, STATE OF NEW MEXICO

DECEMBER 30, 2013

SURVEY NO. 1847B

MADRON SURVEYING, INC. 301 SOUTH CANAL CARLSBAD, NEW MEXICO
(575) 234-3341



**Devon Energy Center
333 West Sheridan Avenue
Oklahoma City, Oklahoma 73102-5015**

Hydrogen Sulfide (H₂S) Contingency Plan

For

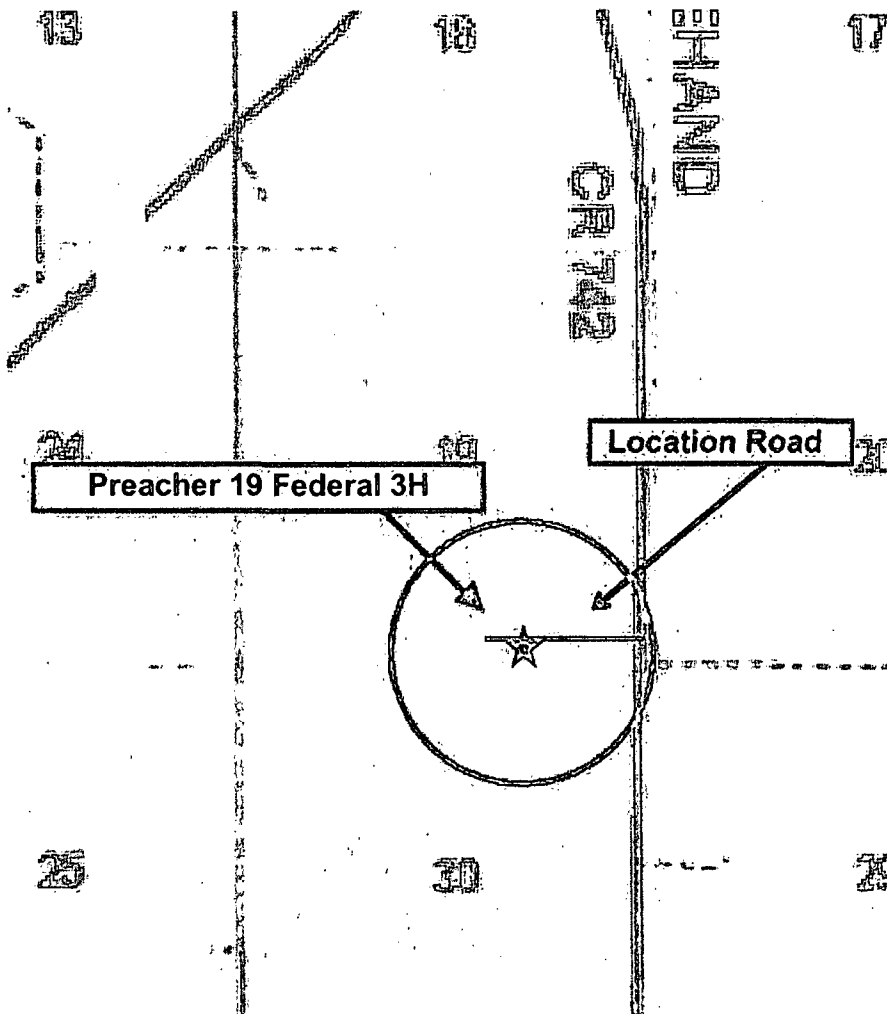
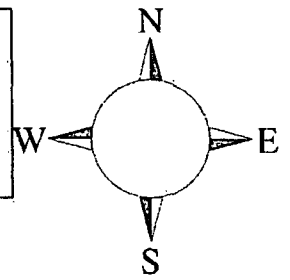
Preacher 19 Federal 3H

**Sec-19, T-24S R-27E
150' FSL & 1980' FEL,
LAT. = 32.1959421'N (NAD83)
LONG = 104.2275831'W**

Eddy County NM

Preacher 19 Federal 3H

This is an open drilling site. H₂S monitoring equipment and emergency response equipment will be used within 500' of zones known to contain H₂S, including warning signs, wind indicators and H₂S monitor.



Assumed 100 ppm H₂S (3000' (1000' x 3))
100 ppm H₂S concentration shall trigger activation of this plan.

Escape

Crews shall escape upwind of escaping gas in the event of an emergency release of gas. Escape can be facilitated from the location entrance road, West then Northwest on lease road. Crews should then block entrance to the location from the lease road so as not to allow anyone traversing into a hazardous area. The blockade should be at a safe distance outside of the ROE. There are no homes or buildings in or near the ROE.

Assumed 100 ppm ROE = 3000'

100 ppm H₂S concentration shall trigger activation of this plan.

Emergency Procedures

In the event of a release of gas containing H₂S, the first responder(s) must

- **Isolate the area and prevent entry by other persons into the 100 ppm ROE.**
- **Evacuate any public places encompassed by the 100 ppm ROE.**
- **Be equipped with H₂S monitors and air packs in order to control the release.**
- **Use the "buddy system" to ensure no injuries occur during the response**
- **Take precautions to avoid personal injury during this operation.**
- **Contact operator and/or local officials to aid in operation. See list of phone numbers attached.**
- **Have received training in the**
 - **Detection of H₂S, and**
 - **Measures for protection against the gas,**
 - **Equipment used for protection and emergency response.**

Ignition of Gas Source

Should control of the well be considered lost and ignition considered, take care to protect against exposure to Sulfur Dioxide (SO₂). Intentional ignition must be coordinated with the NMOCD and local officials. Additionally the NM State Police may become involved. NM State Police shall be the Incident Command on scene of any major release. Take care to protect downwind whenever there is an ignition of the gas

Characteristics of H₂S and SO₂

Common Name	Chemical Formula	Specific Gravity	Threshold Limit	Hazardous Limit	Lethal Concentration
Hydrogen Sulfide	H₂S	1.189 Air = 1	10 ppm	100 ppm/hr	600 ppm
Sulfur Dioxide	SO₂	2.21 Air = 1	2 ppm	N/A	1000 ppm

Contacting Authorities

Devon Energy Corp. personnel must liaison with local and state agencies to ensure a proper response to a major release. Additionally, the OCD must be notified of the release as soon as possible but no later than 4 hours. Agencies will ask for information such as type and volume of release, wind direction, location of release, etc. Be prepared with all information available. The following call list of essential and potential responders has been prepared for use during a release. Devon Energy Corp. Company response must be in coordination with the State of New Mexico's 'Hazardous Materials Emergency Response Plan' (HMER)

Hydrogen Sulfide Drilling Operation Plan

I. HYDROGEN SULFIDE (H₂S) TRAINING

All personnel, whether regularly assigned, contracted, or employed on an unscheduled basis, will receive training from a qualified instructor in the following areas prior to commencing drilling operations on this well:

1. The hazards and characteristics of hydrogen sulfide (H₂S)
2. The proper use and maintenance of personal protective equipment and life support systems.
3. The proper use of H₂S detectors, alarms, warning systems, briefing areas, evacuation procedures, and prevailing winds.
4. The proper techniques for first aid and rescue procedures.

In addition, supervisory personnel will be trained in the following areas:

1. The effects of H₂S metal components. If high tensile tubular are to be used, personnel will be trained in their special maintenance requirements.
2. Corrective action and shut-in procedures when drilling or reworking a well and blowout prevention and well control procedures.
3. The contents and requirements of the H₂S Drilling Operations Plan and Public Protection Plan.

There will be an initial training session just prior to encountering a known or probable H₂S zone (within 3 days or 500 feet) and weekly H₂S and well control drills for all personnel in each crew. The initial training session shall include a review of the site specific H₂S Drilling Operations Plan and the Public Protection Plan.

II. HYDROGEN SULFIDE TRAINING

Note: All H₂S safety equipment and systems will be installed, tested, and operational when drilling reaches a depth of 500 feet above, or three days prior to penetrating the first zone containing or reasonable expected to contain H₂S.

1. Well Control Equipment

- A. Flare line
- B. Choke manifold – Remotely operated
- C. Blind rams and pipe rams to accommodate all pipe sizes with properly sized closing unit
- D. Auxiliary equipment may include if applicable: annular preventer and rotating head.
- E. Mud/Gas Separator

2. Protective equipment for essential personnel:

- A. 30-minute SCBA units located in the doghouse and at briefing areas, as indicated on well site diagram. As it may be difficult to communicate audibly while wearing these units, hand signals shall be utilized.

3. H₂S detection and monitoring equipment:

- A. Portable H₂S monitors positioned on location for best coverage and response. These units have warning lights and audible sirens when H₂S levels of 20 PPM are reached. These units are usually capable of detecting SO₂, which is a byproduct of burning H₂S.

4. Visual warning systems:

- A. Wind direction indicators as shown on well site diagram
- B. Caution/ Danger signs shall be posted on roads providing direct access to locations. Signs will be painted a high visibility yellow with black lettering of sufficient size to be reasonable distance from the immediate location. Bilingual signs will be used when appropriate.

5. Mud program:

- A. The mud program has been designed to minimize the volume of H₂S circulated to surface. Proper mud weight, safe drilling practices and the use of H₂S scavengers will minimize hazards when penetrating H₂S bearing zones.

6. Metallurgy:

- A. All drill strings, casings, tubing, wellhead, blowout preventer, drilling spool, kill lines, choke manifold lines, and valves shall be H₂S trim.
- B. All elastomers used for packing and seals shall be H₂S trim.

7. Communication:

- A. Radio communications in company vehicles including cellular telephones and 2-way radio
- B. Land line (telephone) communications at Office

8. Well testing:

- A. Drill stem testing will be performed with a minimum number of personnel in the immediate vicinity, which are necessary to safety and adequately conduct the test. The drill stem testing will be conducted during daylight hours and formation fluids will not be flowed to the surface. All drill-stem-testing operations conducted in an H₂S environment will use the closed chamber method of testing.
- B. There will be no drill stem testing.

Devon Energy Corp. Company Call List

<u>Artesia (575)</u>	<u>Cellular</u>	<u>Office</u>	<u>Home</u>
Foreman – Robert Bell.....	748-7448.....	748-0178.....	746-2991
Asst. Foreman –Tommy Polly.....	748-5290.....	748-0165.....	748-2846
Don Mayberry.....	748-5235.....	748-0164.....	746-4945
Montral Walker.....	390-5182.....	748-0193.....	(936) 414-6246
Engineer – Marcos Ortiz.....	(405) 317-0666.....	(405) 552-8152.....	(405) 381-4350

Agency Call List

<u>Lea County (575)</u>	<u>Hobbs</u>
	Lea County Communication Authority.....
	State Police.....
	City Police.....
	Sheriff's Office.....
	Ambulance.....
	Fire Department.....
	LEPC (Local Emergency Planning Committee).....
	NMOCD.....
	US Bureau of Land Management.....

<u>Eddy County (575)</u>	<u>Carlsbad</u>
	State Police.....
	City Police.....
	Sheriff's Office.....
	Ambulance.....
	Fire Department.....
	LEPC (Local Emergency Planning Committee).....
	US Bureau of Land Management.....
	NM Emergency Response Commission (Santa Fe).....
	24 HR.....
	National Emergency Response Center (Washington, DC).....

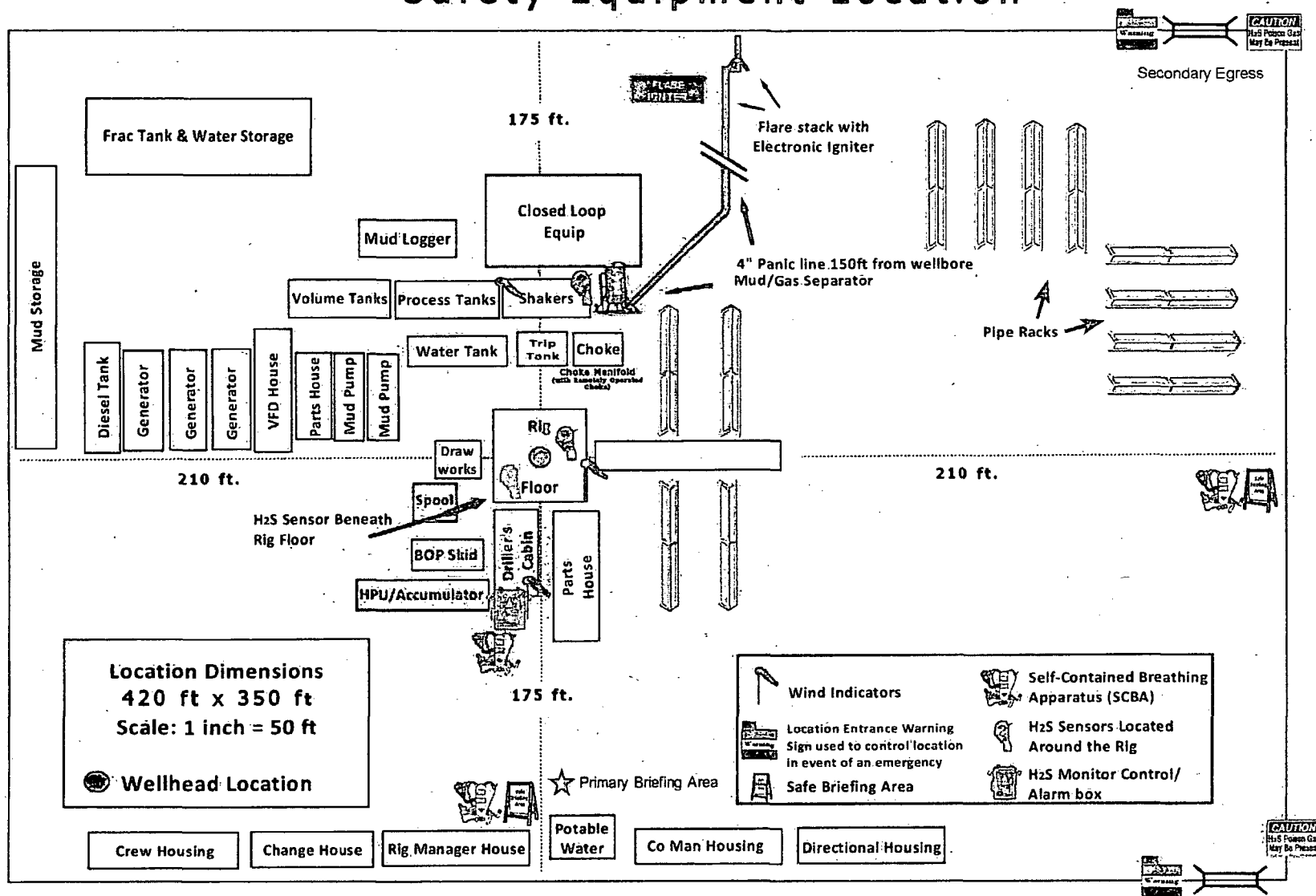
Emergency Services

	Boots & Coots IWC.....	(800)-256-9688 or (281) 931-8884
	Cudd Pressure Control.....	(915) 699-0139 or (915) 563-3356
	Halliburton.....	(575) 746-2757
	B. J. Services.....	(575) 746-3569
<i>Give</i>	Native Air – Emergency Helicopter – Hobbs.....	(575) 392-6429
<i>GPS</i>	Flight For Life - Lubbock, TX.....	(806) 743-9911
<i>position:</i>	Aerocare - Lubbock, TX.....	(806) 747-8923
	Med Flight Air Amb - Albuquerque, NM.....	(575) 842-4433
	Lifeguard Air Med Svc. Albuquerque, NM.....	(575) 272-3115

Prepared in conjunction with
Dave Small



Devon Petroleum - Well Pad Rig Location Layout Safety Equipment Location




devon

Proposed Interim Site Reclamation

Devon Energy Production Co.
Preacher 19 Fed 3H
150' FSL & 1980' FEL
Sec. 19-T24S-R27E
Eddy County, NM



Proposed
Reclamation
Area



Scale: 1in = 60ft.

