

UNORTHODOX LOCATION

UNITED STATES DEPARTMENT OF THE INTERIOR BUREAU OF LAND MANAGEMENT

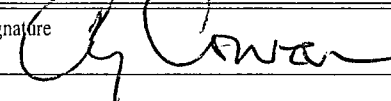
APPLICATION FOR PERMIT TO DRILL OR REENTER

1a. Type of work: <input checked="" type="checkbox"/> DRILL <input type="checkbox"/> REENTER		5. Lease Serial No. NM- 1372
1b. Type of Well: <input checked="" type="checkbox"/> Oil Well <input type="checkbox"/> Gas Well <input type="checkbox"/> Other <input checked="" type="checkbox"/> Single Zone <input type="checkbox"/> Multiple Zone		6. If Indian, Allottee or Tribe Name N/A
2. Name of Operator YATES PETROLEUM CORPORATION		7. If Unit or CA Agreement, Name and No. N/A
3a. Address 105 South Fourth Street Artesia, New Mexico 88210	3b. Phone No. (include area code) 575-748-4372	8. Lease Name and Well No. Warren "ANW" Federal #5H <13108>
4. Location of Well (Report location clearly and in accordance with any State requirements.)* At surface 1500' FSL & 150' FWL, Unit Ltr L, Sec. 9-T19S-R25E, SHL At proposed prod. zone 1700 FSL & 330' FEL, Unit Ltr I, Sec.9-T19S-R25E, BHL		9. API Well No. 30-015-42369
14. Distance in miles and direction from nearest town or post office* Approximately 14 miles south of Artesia, NM.		10. Field and Pool, or Exploratory Undesignated Yeso - Penasco Draw, SA-V850 <50270>
15. Distance from proposed* location to nearest property or lease line, ft. (Also to nearest drig. unit line, if any) Approx. 150'	16. No. of acres in lease NM-1372, 682.69 acres	11. Sec., T. R. M. or Blk. and Survey or Area Section 9-T19S-R25E
18. Distance from proposed location* to nearest well, drilling, completed, applied for, on this lease, ft. Approx. 1000'	19. Proposed Depth TVD-2525' MD-6465'	12. County or Parish Eddy County
21. Elevations (Show whether DF, KDB, RT, GL, etc.) 3453' GL	22. Approximate date work will start* 03/28/2014	13. State NM
23. Estimated duration 60 days		

24. Attachments

The following, completed in accordance with the requirements of Onshore Oil and Gas Order No. 1, must be attached to this form:

- | | |
|--|---|
| 1. Well plat certified by a registered surveyor. | 4. Bond to cover the operations unless covered by an existing bond on file (see Item 20 above). |
| 2. A Drilling Plan. | 5. Operator certification |
| 3. A Surface Use Plan (if the location is on National Forest System Lands, the SUPO must be filed with the appropriate Forest Service Office). | 6. Such other site specific information and/or plans as may be required by the BLM. |

25. Signature 	Name (Printed/Typed) Cy Cowan	Date 1/9/14
Title Land Regulatory Agent		
Approved by (Signature) Steve Caffey	Name (Printed/Typed)	Date APR 28 2014
Title FIELD MANAGER	Office CARLSBAD FIELD OFFICE	

Application approval does not warrant or certify that the applicant holds legal or equitable title to those rights in the subject lease which would entitle the applicant to conduct operations thereon.
Conditions of approval, if any, are attached.

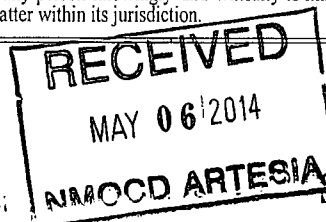
APPROVAL FOR TWO YEARS

Title 18 U.S.C. Section 1001 and Title 43 U.S.C. Section 1212, make it a crime for any person knowingly and willfully to make to any department or agency of the United States any false, fictitious or fraudulent statements or representations as to any matter within its jurisdiction.

(Continued on page 2)

*(Instructions on page 2)

Roswell Controlled Water Basin



SEE ATTACHED FOR
CONDITIONS OF APPROVAL

Approval Subject to General Requirements
& Special Stipulations Attached

CERTIFICATION
YATES PETROLEUM CORPORATION
Warren ANW Federal #5H

I hereby certify that I, or someone under my direct supervision, have inspected the drill site and access route proposed herein; that I am familiar with the conditions which currently exist; and an someone under employment of Yates Petroleum Corporation has full knowledge of state and federal laws applicable to this operation; that the statements made in this APD package are, to the best of my knowledge, true and correct; and that the work associated with the operations proposed herein will be performed in conformity with this APD package and the terms and conditions under which it is approved. I also certify that I, or the company I represent, am responsible for the operations conducted under this application. These statements are subject to the provisions of 18 U.S.C. 1001 for the filing of false statements.

Executed this 9th day of January 2014

Signature Cy Cowan

Name Cy Cowan

Position Title Land Regulatory Agent

Address 105 South Fourth Street, Artesia, New Mexico 88210

Telephone (575) 748-4372

Field Representative (if not above signatory) Tim Bussell, Drilling Supervisor

Address (if different from above) Same as above.

Telephone (if different from above) (575) 748-4221

E-mail (optional) cy@yatespetroleum.com

DISTRICT I
1625 N. French Dr., Hobbs, NM 88240
Phone (505) 393-8161 Fax: (505) 393-0720

DISTRICT II
811 S. First St., Artesia, NM 88210
Phone (505) 748-1283 Fax: (505) 748-9720

DISTRICT III
1000 Rio Brazos Rd., Aztec, NM 87410
Phone (505) 334-6178 Fax: (505) 334-6170

DISTRICT IV
1220 S. St. Francis Dr., Santa Fe, NM 87505
Phone (505) 478-3460 Fax: (505) 478-3462

State of New Mexico
Energy, Minerals and Natural Resources Department

Form C-102
Revised August 1, 2011

Submit one copy to appropriate
District Office

OIL CONSERVATION DIVISION
1220 South St. Francis Dr.
Santa Fe, New Mexico 87505

WELL LOCATION AND ACREAGE DEDICATION PLAT

☐ AMENDED REPORT

API Number 30-015-42369	Pool Code 50270	Pool Name Penasco Draw Undesignated: Yeso
Property Code 13108	Property Name WARREN ANW FEDERAL	Well Number 5H
OGRID No. 025575	Operator Name YATES PETROLEUM CORPORATION	Elevation 3453

Surface Location

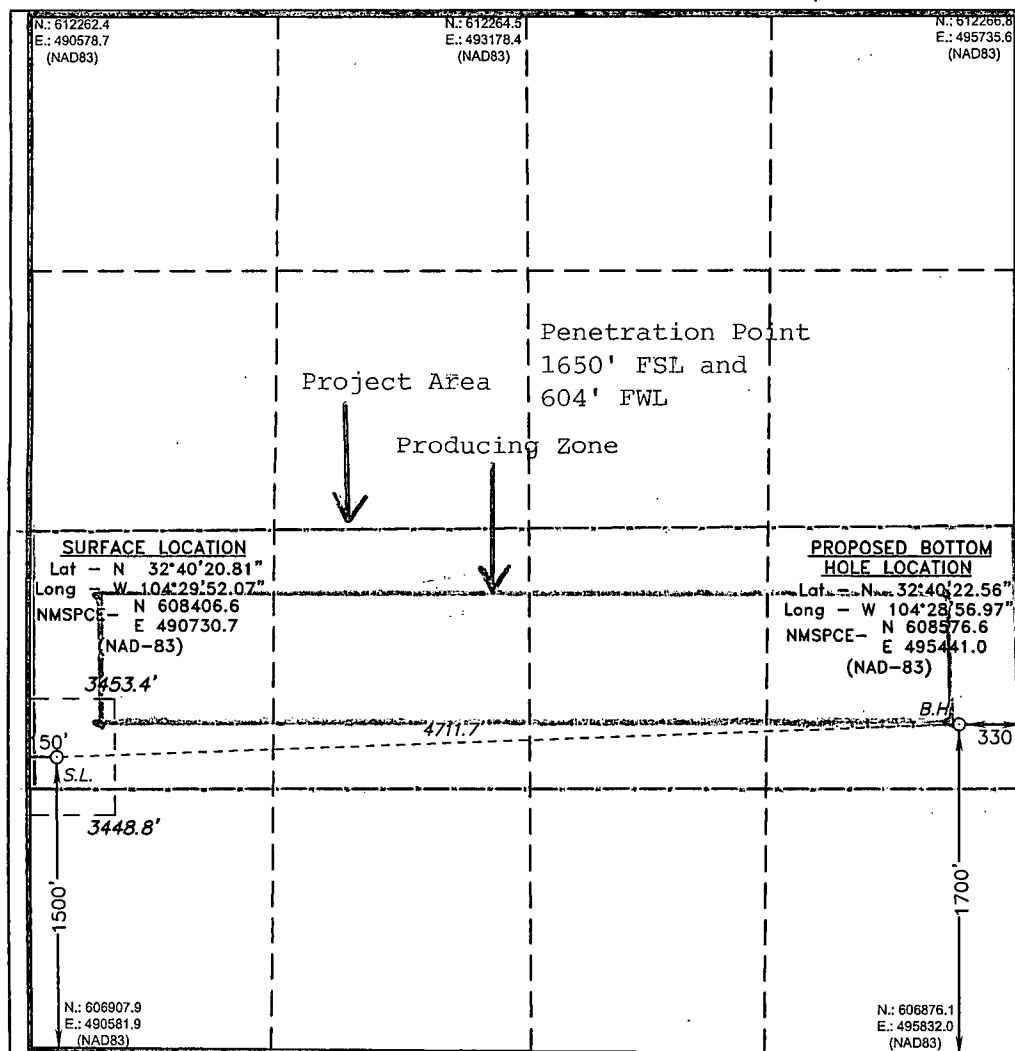
UL or lot No.	Section	Township	Range	Lot Idn	Feet from the	SOUTH/South line	Feet from the	East/EAST line	County
L	9	19 S	25 E		1500	SOUTH	150	WEST	EDDY

Bottom Hole Location If Different From Surface

UL or lot No.	Section	Township	Range	Lot Idn	Feet from the	SOUTH/South line	Feet from the	East/EAST line	County
I	9	19 S	25 E		1700	SOUTH	330	EAST	EDDY

Dedicated Acres	Joint or Infill	Consolidation Code	Order No.
160			4-28 6465

NO ALLOWABLE WILL BE ASSIGNED TO THIS COMPLETION UNTIL ALL INTERESTS HAVE BEEN CONSOLIDATED
OR A NON-STANDARD UNIT HAS BEEN APPROVED BY THE DIVISION



OPERATOR CERTIFICATION

I hereby certify that the information contained herein is true and complete to the best of my knowledge and belief, and that this organization either owns a working interest or unleased mineral interest in the land including the proposed bottom hole location or has a right to drill this well at this location pursuant to a contract with an owner of such a mineral or working interest, or to a voluntary pooling agreement or a compulsory pooling order heretofore entered by the division.

Cy Cowan 11/10/14
Signature Date

Cy Cowan
Printed Name

Email Address

SURVEYOR CERTIFICATION

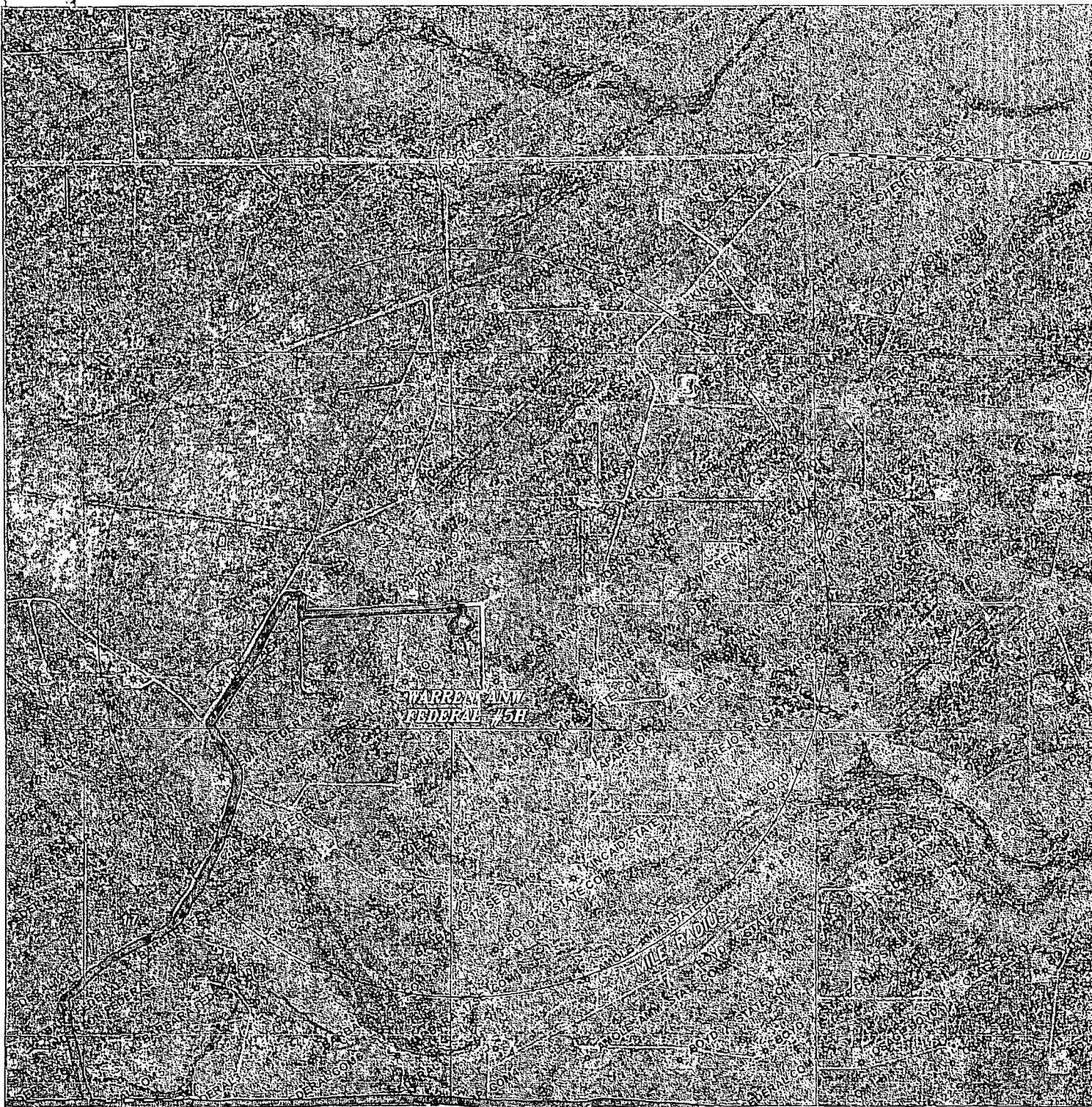
I hereby certify that the well location shown on this plat was plotted from field notes of actual surveys made by me or under my supervision, and that the same is true and correct to the best of my belief.

NOVEMBER 08 2013

Date Surveyed
Signature & Seal of
Professional Surveyor

Certificate No. 7977
BASIN SERVICES

0' 500' 1000' 109000' 2000'
SCALE: 1" = 1000'
WO Num.: 29682



WARREN ANW FEDERAL #5H
 Located 1500' FSL and 150' FWL
 Section 9, Township 19 South, Range 25 East,
 N.M.P.M., Eddy County, New Mexico.



focused on excellence
in the oilfield

P.O. Box 1786
 1120 N. West County Rd.
 Hobbs, New Mexico 88241
 (575) 393-7316 - Office
 (575) 392-2206 - Fax
basinsurveys.com

0' 1000' 2000' 3000' 4000'

SCALE: 1" = 2000'

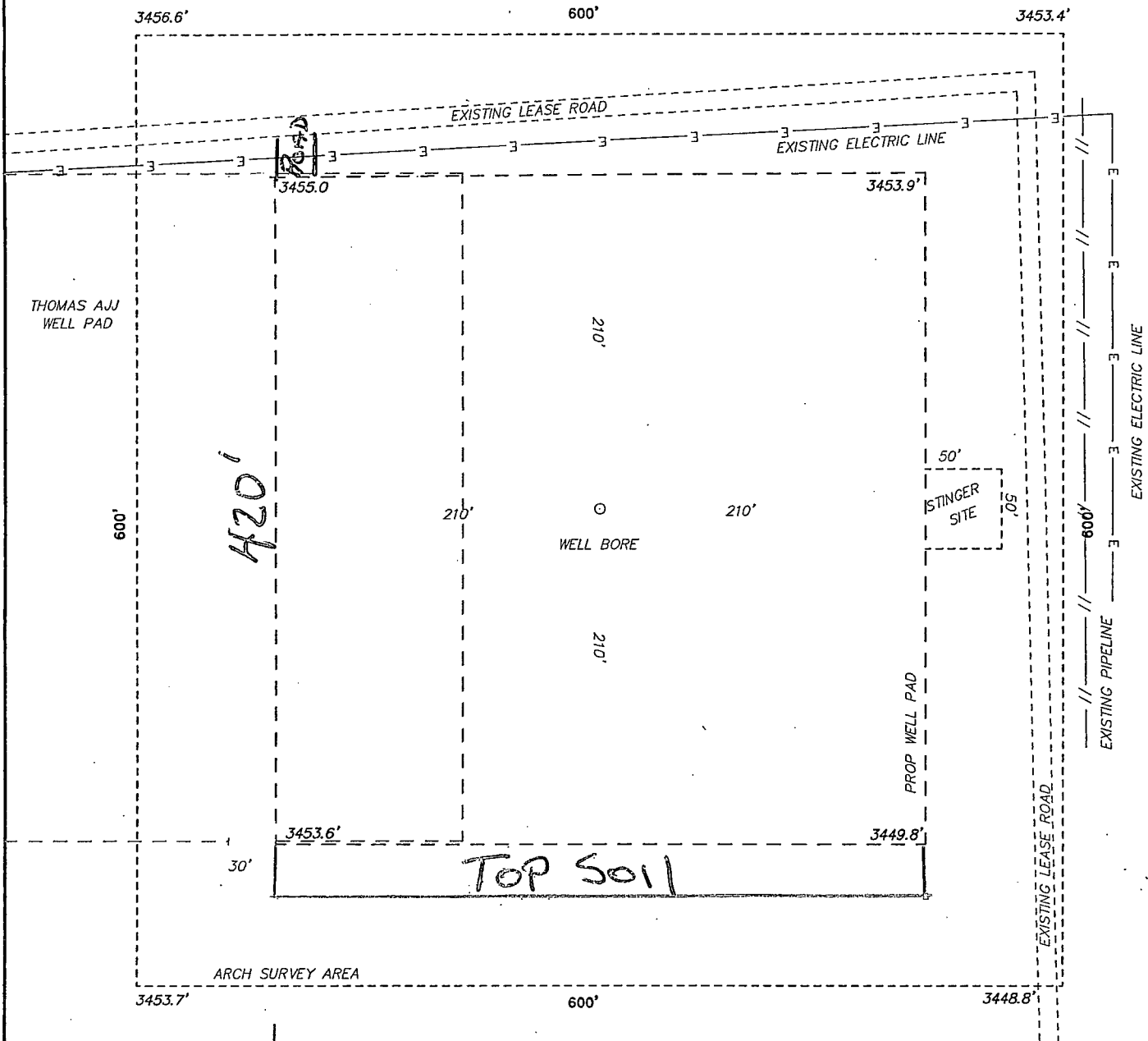
W.O. Number: KAN 29682

Survey Date: 11-08-2013

YELLOW TINT - USA LAND
 BLUE TINT - STATE LAND
 NATURAL COLOR - FEE LAND



SECTION 9, TOWNSHIP 19 SOUTH, RANGE 25 EAST. N.M.P.M.,
EDDY COUNTY, NEW MEXICO.



100 0 100 200 FEET

SCALE: 1" = 100'



BATES PETROLEUM CORPORATION

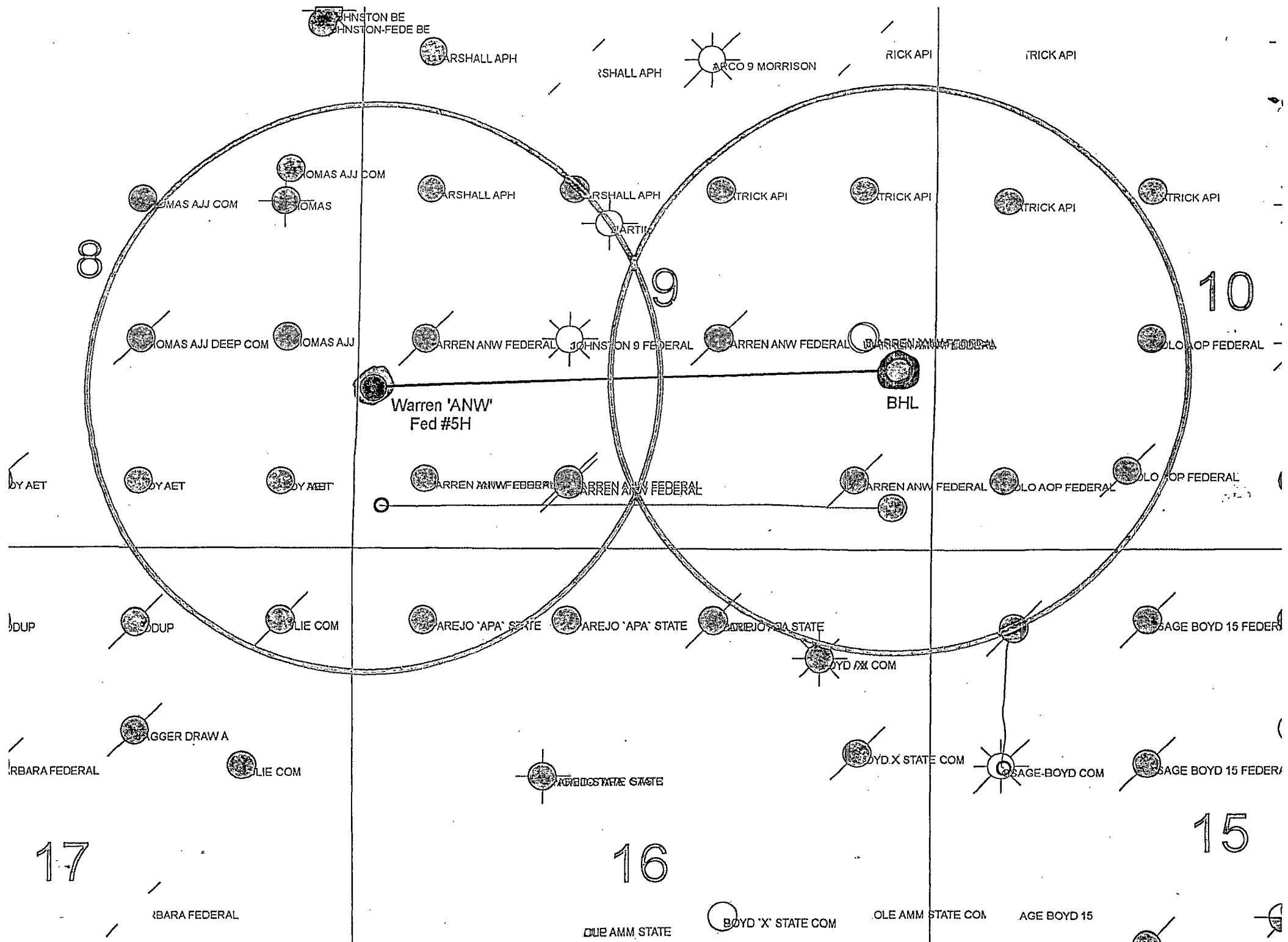
REF: WARREN ANW FEDERAL #5H / WELL PAD TOPO

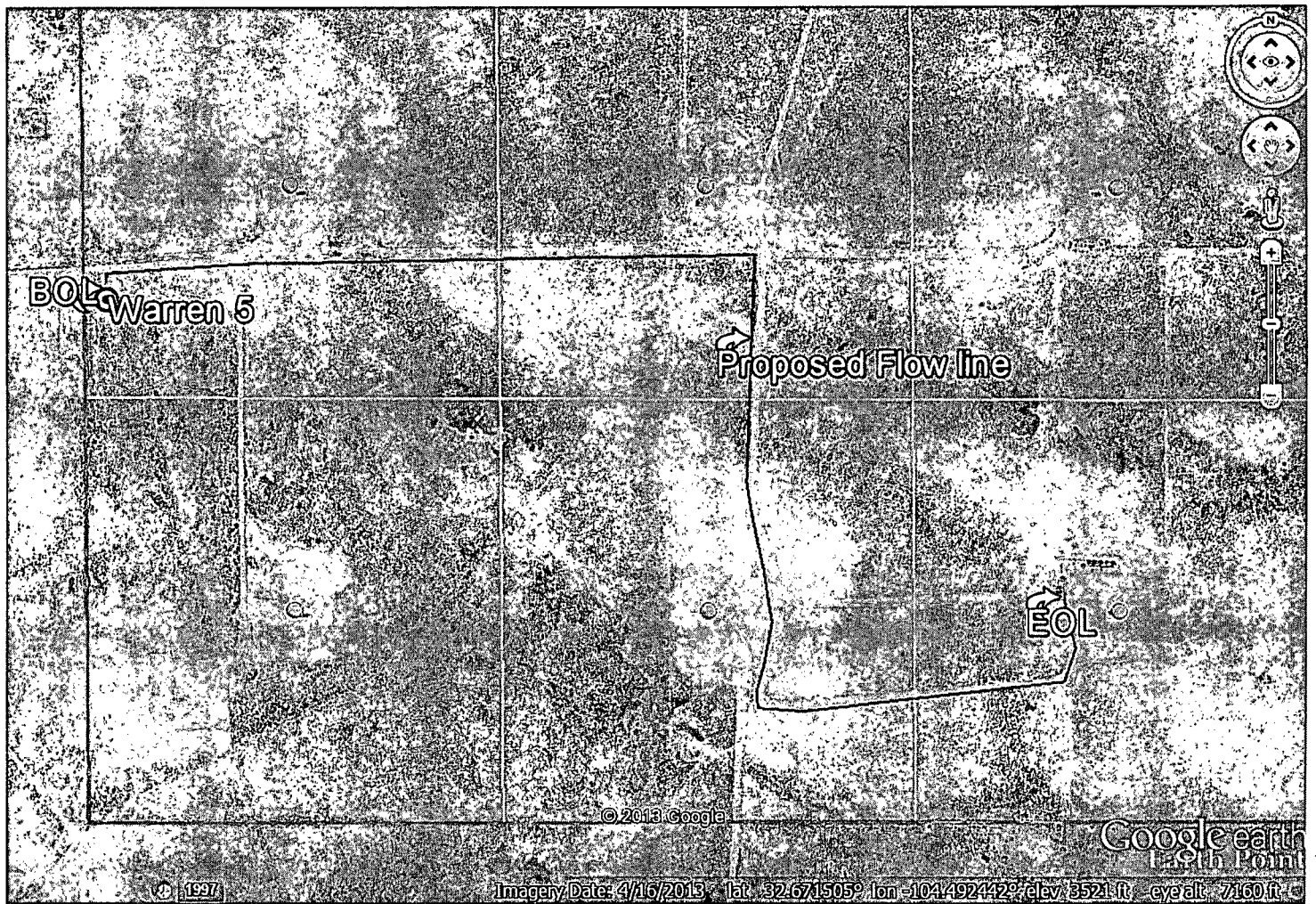
THE WARREN ANW FEDERAL #5H LOCATED 1500' FROM
THE SOUTH LINE AND 150' FROM THE WEST LINE OF
SECTION 9, TOWNSHIP 19 SOUTH, RANGE 25 EAST.

N.M.P.M., EDDY COUNTY, NEW MEXICO.



focused on excellence in the oilfield
P.O. Box 1786
1120 N. West County Rd.
Hobbs, New Mexico 88241
(575) 393-7316 - Office
(575) 392-2206 - Fax
basinsurvey.com





YATES PETROLEUM CORPORATION

Warren "ANW" Federal #5-H
1500' FSL & 150' FWL, Surface Hole
1700' FSL & 330' FEL, Bottom Hole
Section 9 - T19S-R25-E
Eddy County, New Mexico

1. The estimated tops of geologic markers are as follows:

Alluvial Deposits	0		Yeso	2187' MD-Oil	2175' TVD
San Andres	670'		Target Yeso	2685' MD-Oil	2412' TVD
KOP	1935'		Lateral TD	6465' MD	2525' TVD
Glorieta	2093'--Oil	2090' TVD			

2. The estimated depths at which anticipated water, oil or gas formations are expected to be encountered:

Water: Approximately 400.

Oil or Gas: See above--All Potential Zones

3. Pressure Control Equipment: 3000 PSI BOPE with a 13.625" opening will be installed on the 9 5/8. Test will be conducted by an independent tester, utilizing a test plug in the well head. BOP/BOPE test shall include a low pressure test from 250 to 300 psi. The test will be held for a minimum of 10 minutes on each segment of the system tested if test is done with a test plug and 30 minutes without a test plug. Blind rams and pipe rams will be tested to the rated pressure of the BOP. Any leaks will be repaired at the time of the test. Annular preventers will be tested to 50% of rated pressure. Accumulator system will be inspected for correct pre charge pressures, and proper functionality, prior to connection to the BOP system. Tests will be conducted before drilling out from under all casing strings, which are set and cemented in place. Blowout Preventer controls will be installed prior to drilling the surface plug and will remain in use until the well is completed or abandoned. Preventers will be inspected and operated at least daily to ensure good mechanical working order, and this inspection recorded on the daily drilling report. See Exhibit B.

Accumulator system will be inspected for correct pre charge pressures, and proper functionality. Prior to connection to the BOP system.

Auxiliary Equipment:

4. Auxiliary Equipment: Kelly cock, pit level indicators, flow sensor equipment and a sub with full opening valve to fit the drill pipe and collars will be available on the rig floor in the open position at all times for use when kelly is not in use.

THE PROPOSED CASING AND CEMENTING PROGRAM:

- A. Casing Program: (Casing All New)

HOLE SIZE	CASING SIZE	WT/FT	GRADE	COUPLING	INTERVAL	LENGTH
14 3/4"	9 5/8"	36#	J-55	LT&C	0-800'	800'
8 3/4"	5 1/2"	17#	L-80	Buttress	0-6465'	6465'

Minimum Casing Design Factors: Burst 1.0, Tensile 1.8, Collapse 1.125

- B. CEMENTING PROGRAM:

Surface casing will be cemented from 800' to surface with 410 sacks of 35:65:6PzC (Wt. 12.50 Yld. 2.00 Wtr 11 gal/sack). Tail in with 205 sacks Class C with CaCl₂ (Wt. 14.80 Yld. 1.34 Wtr 6.20 gal/sack). Cement designed with 100% excess. TOC is to surface.

Production Casing will be cemented from 6465' to surface with 325 sacks of 35:65:6PzC (Wt. 12.50 Yld. 2.00 Wtr 11 gal/sack). Tail in 790 sacks of PecosVILt with D112, Fluid Loss 0.4%; D151, Calcium Carbonate, 22.5 lb/sack; D-174, Extender 1.5 lb/sack; D-177, Retarder 0.01 lb/sack; D-800, Retarder 0.5 lb/sack and D46, Antifoam Agent, 0.15 lb/sack (Wt. 13.00 Yld. 1.82 Wtr 9.30 gal/sack). Cement designed with 35% excess. TOC is to surface.

The well will be drilled vertically to 1935'. Well will then be kick off at approximately 1935' and directionally drilled at 12 degrees per 100' with an 8 3/4" hole to 2685' MD (2412' TVD). The hole size will be reduced to 8 1/2" and drilled to 6465' MD (2525' TVD) where 5 1/2" casing will be set and cemented. Production string will be cemented to surface. Penetration point of the producing zone will be encountered at 1650' FSL & 604' FWL, 9-19S-25E. Deepest TVD in the well is 2525' in the lateral.

5. Mud Program and Auxiliary Equipment:

INTERVAL	TYPE	WEIGHT	VISCOSITY	FLUID LOSS
0-800'	Fresh Water	8.60-8.70	32-34	N/C
800'-6465'	Fresh Water	8.5 0-8.70	28-32	N/C

Casing Design Factors: Burst 1.0 Tensile 1.8 Collapse 1.125

Sufficient mud material(s) to maintain mud properties, control lost circulation and contain a blow out will be available at the well site during drilling operations. The slow pump speed will be recorded on the daily drilling report after mudding up. A mud test will be performed every 24 hours after mudding up to determine, as applicable, viscosity, gel strength, filtration and pH. After surface casing is set an electronic PVT system will be installed as our primary mud level monitoring system. A secondary system will also be implemented as to insure the PVT system is functioning properly. The secondary system will be comprised of the derrick hand visually checking the fluid level in the pits periodically using a nut on the end of a rope hanging just above the fluid level in the pit.

6. EVALUATION PROGRAM: *See COA*

Samples: 10' samples 0' to 6918' (MTD).

Logging: No logs to be ran. MWD-GR will be turned on 500' before KOP to TD..

Coring: None

DST's: None

Mudlogging: Yes. Surface to TD.

7. Abnormal Conditions, Bottom hole pressure and potential hazards:

Anticipated BHP: Depths are TVD.

0' to 800'	383 PSI
800' to 2525'	1142 PSI

No abnormal pressures or temperatures are anticipated.

See COA Lost Circulation Zones Anticipated: None.

H2S Zones Anticipated: H2S is anticipated.

Maximum Bottom Hole Temperature 100 F

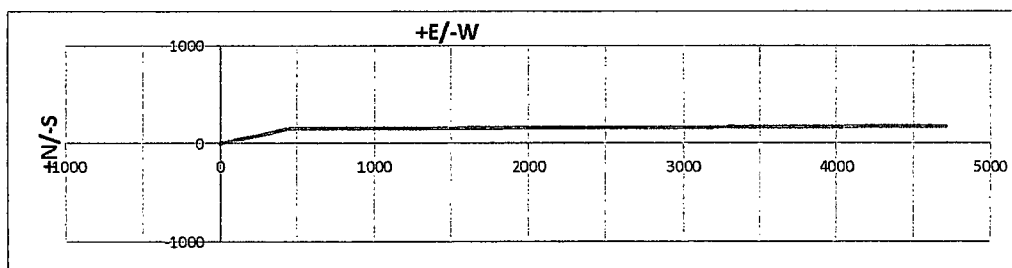
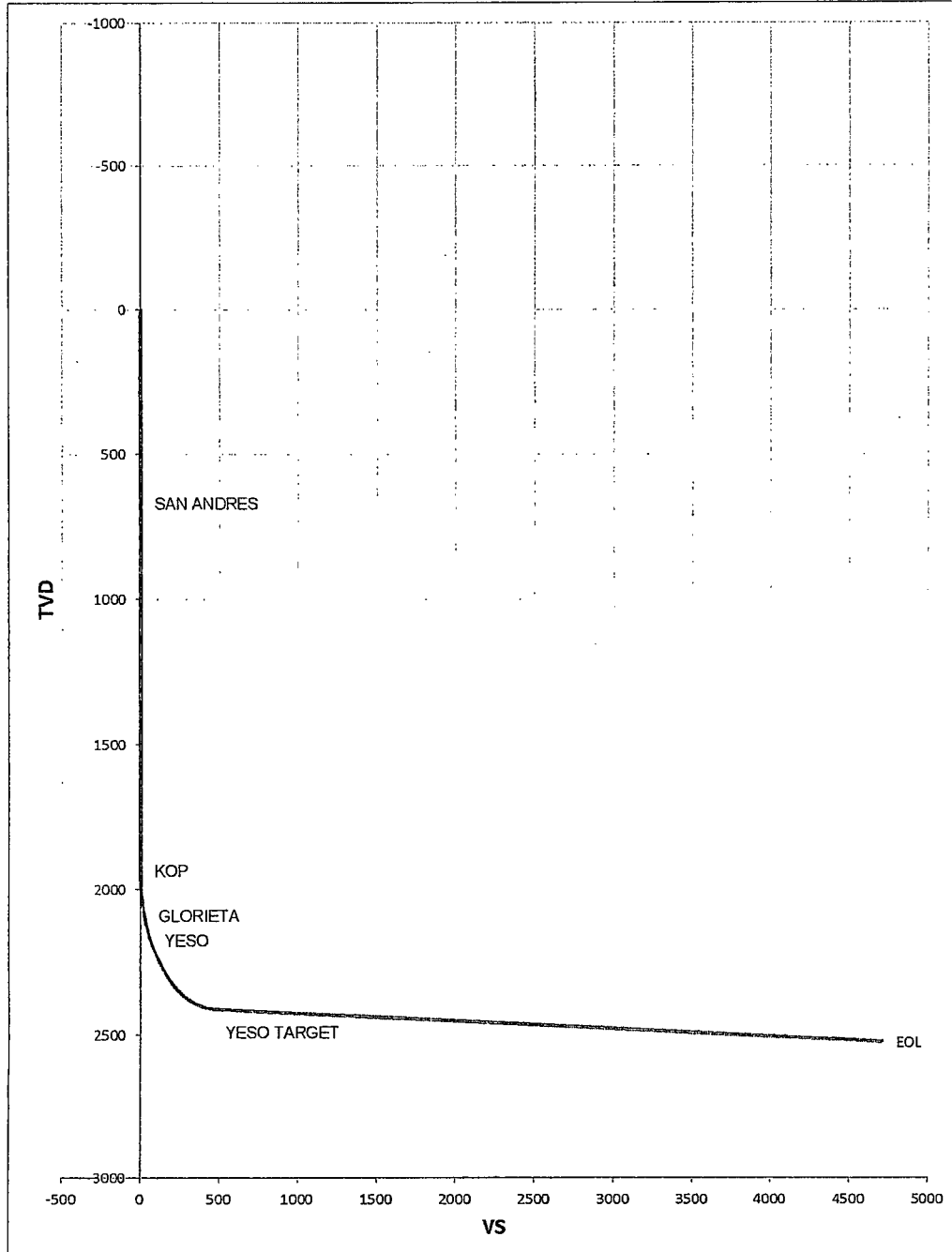
8. ANTICIPATED STARTING DATE:

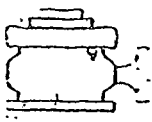
Plans are to drill this well as soon as receiving approval. It should take approximately 60 days to drill the well with completion taking another 30 days.

Well Name:	Warren ANW Federal #5H	Tgt N-S:	150.00	
		Tgt E-W:	454.00	EOC TVD/MD: 2412.00 / 2672.38
Surface Location:	Section 9 , Township 19S Range 25E	VS:	478.14	
Bottom Hole Location:	Section 9 , Township 19S Range 25E	VS Az:	71.72	EOL TVD/MD: 2412.33 / 2685.36

MD	Inc	AZI	TVD	N/S	E/W	VS	DLS	Comments
0	0	0	0	0	0	0	0	
670.00	0.00	0.00	670.00	0.00	0.00	0.00	0.00	SAN ANDRES
1934.69	0.00	0.00	1934.69	0.00	0.00	0.00	0.00	KOP
1950.00	1.84	71.72	1950.00	0.08	0.23	0.25	12.00	
1975.00	4.84	71.72	1974.95	0.53	1.61	1.70	12.00	
2000.00	7.84	71.72	1999.80	1.40	4.23	4.46	12.00	
2025.00	10.84	71.72	2024.46	2.67	8.09	8.52	12.00	
2050.00	13.84	71.72	2048.88	4.35	13.16	13.86	12.00	
2075.00	16.84	71.72	2072.99	6.42	19.44	20.47	12.00	
2092.88	18.98	71.72	2090.00	8.15	24.65	25.96	12.00	GLORIETA
2100.00	19.84	71.72	2096.72	8.89	26.90	28.33	12.00	
2125.00	22.84	71.72	2120.00	11.74	35.54	37.43	12.00	
2150.00	25.84	71.72	2142.78	14.97	45.32	47.73	12.00	
2175.00	28.84	71.72	2164.98	18.57	56.22	59.21	12.00	
2186.51	30.22	71.72	2175.00	20.35	61.60	64.88	12.00	YESO
2200.00	31.84	71.72	2186.56	22.54	68.21	71.83	12.00	
2225.00	34.84	71.72	2207.44	26.85	81.25	85.57	12.00	
2250.00	37.84	71.72	2227.58	31.49	95.32	100.38	12.00	
2275.00	40.84	71.72	2246.91	36.46	110.36	116.23	12.00	
2300.00	43.84	71.72	2265.39	41.74	126.35	133.06	12.00	
2325.00	46.84	71.72	2282.96	47.32	143.23	150.84	12.00	
2350.00	49.84	71.72	2299.58	53.18	160.96	169.52	12.00	
2375.00	52.84	71.72	2315.19	59.30	179.49	189.04	12.00	
2400.00	55.84	71.72	2329.77	65.68	198.78	209.35	12.00	
2425.00	58.84	71.72	2343.26	72.28	218.76	230.39	12.00	
2450.00	61.84	71.72	2355.63	79.09	239.38	252.11	12.00	
2475.00	64.84	71.72	2366.84	86.10	260.60	274.45	12.00	
2500.00	67.84	71.72	2376.88	93.28	282.34	297.35	12.00	
2525.00	70.84	71.72	2385.70	100.62	304.54	320.74	12.00	
2550.00	73.84	71.72	2393.28	108.09	327.16	344.55	12.00	
2575.00	76.84	71.72	2399.61	115.68	350.12	368.74	12.00	
2600.00	79.84	71.72	2404.66	123.36	373.37	393.22	12.00	
2625.00	82.84	71.72	2408.43	131.11	396.83	417.93	12.00	
2650.00	85.84	71.72	2410.89	138.92	420.45	442.81	12.00	
2672.38	88.52	71.72	2412.00	145.93	441.67	465.16	12.00	YESO TARGET
2685.36	88.52	71.72	2412.33	150.00	454.00	478.14	0.00	
6465.23	88.52	89.73	2525.00	170.00	4713.00	4713.1	0	EOL

Warren ANW Federal #5H

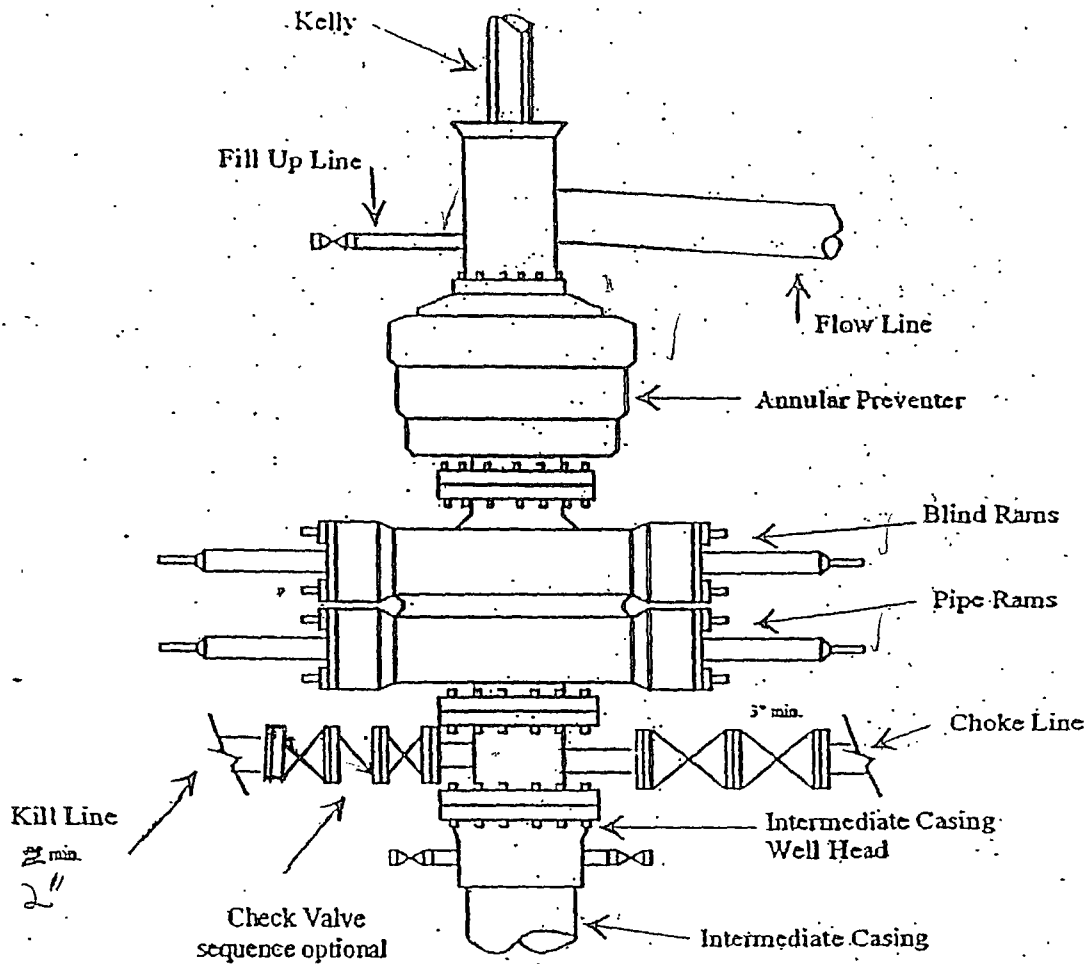




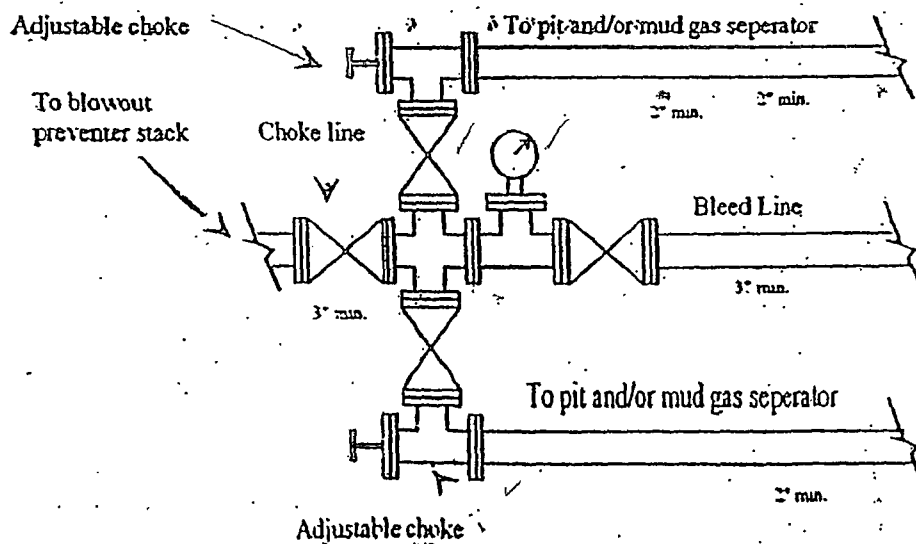
Yates Petroleum Corporation
 Typical 3,000 psi Pressure System
 Schematic
 Annular with Double Ram Preventer Stack

BOP-3

Exhibit

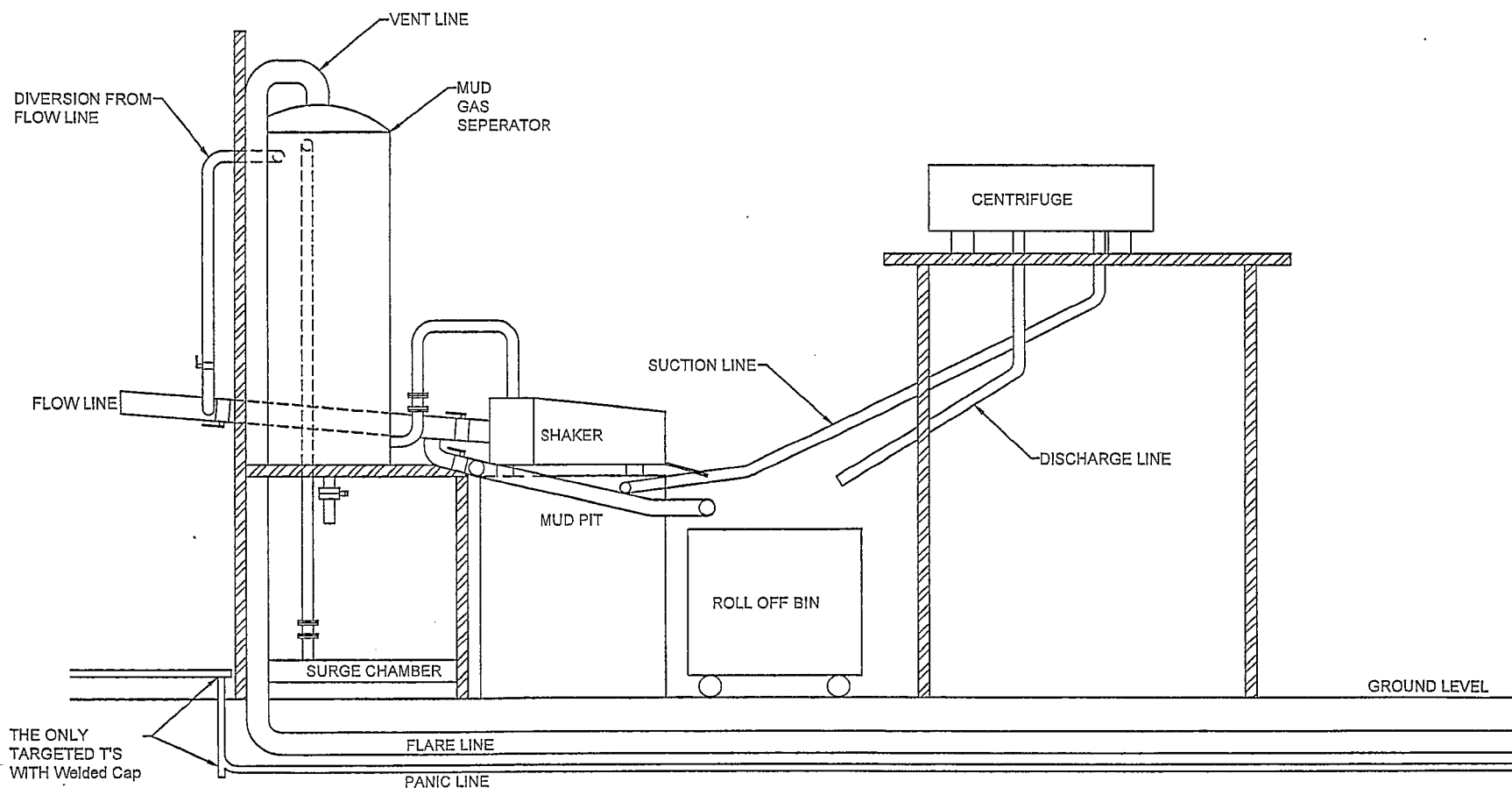


Typical 3,000 psi choke manifold assembly with at least these minimum features



YATES PETROLEUM CORPORATION

Piping from Choke Manifold to the Closed Loop Drilling Mud System



Yates Petroleum Corporation Closed Loop System

Equipment Design Plan

Closed Loop System will consist of:

1 – double panel shale shaker

1 – (minimum) Centrifuge, certain wells and flow rates may require 2 centrifuges

On certain wells, the Centrifuge will be replaced by a Clackco Settling Tank System

1 – minimum centrifugal pump to transfer fluids

2- 500 bbl. FW Tanks

1 – 500 bbl. BW Tank

1 – half round frac tank – 250 bbl. capacity as necessary to catch cement / excess mud returns generated during a cement job.

1 Set of rail cars / catch bins

Certain wells will use an ASC Auger Tank

Operation Plan

All equipment will be inspected at least hourly by rig personnel and daily by contractors' personnel.

Any spills / leaks will be reported to YPC, NMOCD, and cleaned up without delay.

Closure Plan

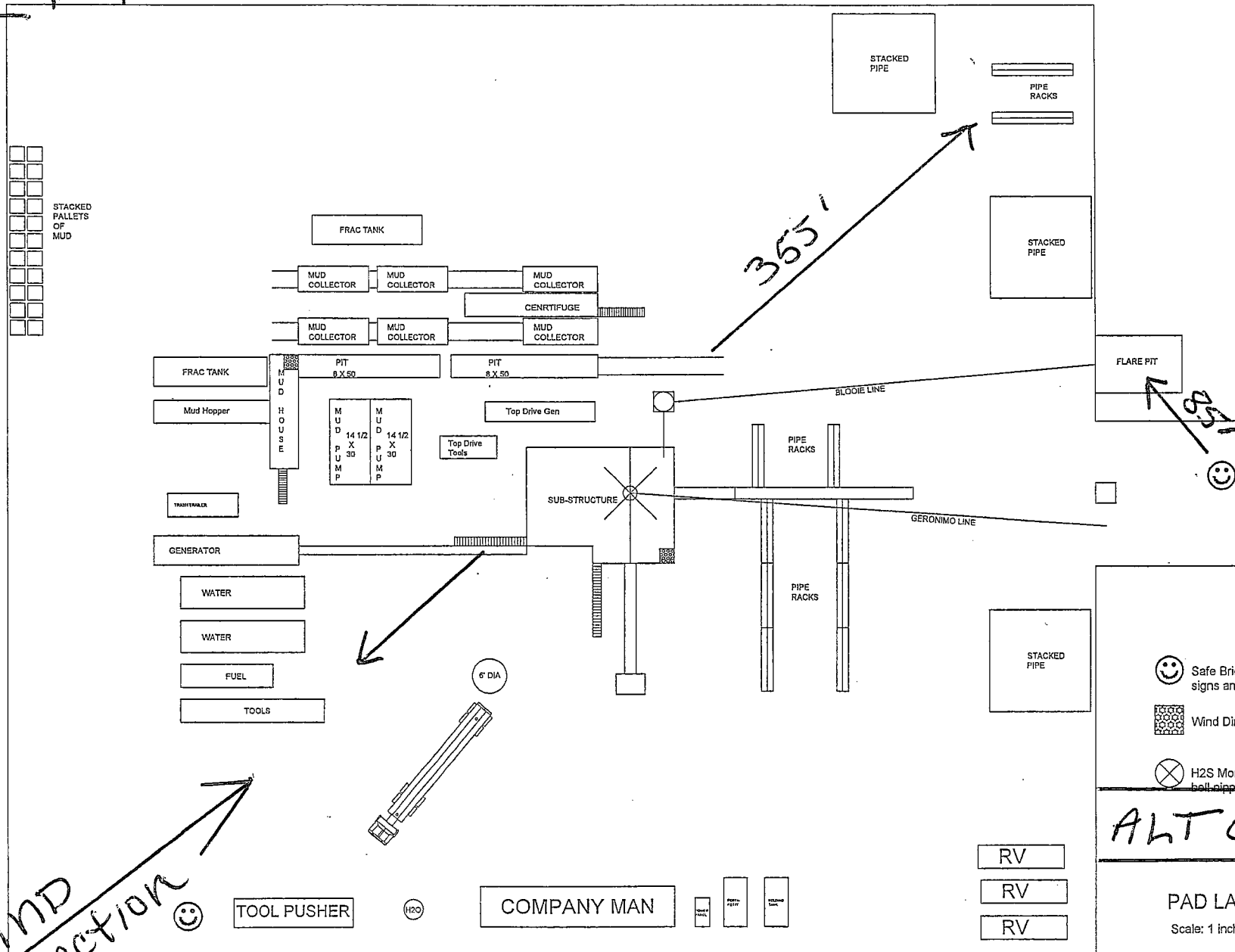
Drilling with Closed Loop System, haul off bins will be taken to Gandy Marley, Lea Land Farm, CRI or Sundance Services Inc.

WARREN ANW
7ED #5H

YATES PETROLEUM CORPORATION

Sign

ROAD



- ☺ Safe Briefing Area with caution signs and breathing equipment
- ☒ Wind Direction Indicators
- ⊗ H2S Monitor with alarm at the well-couple

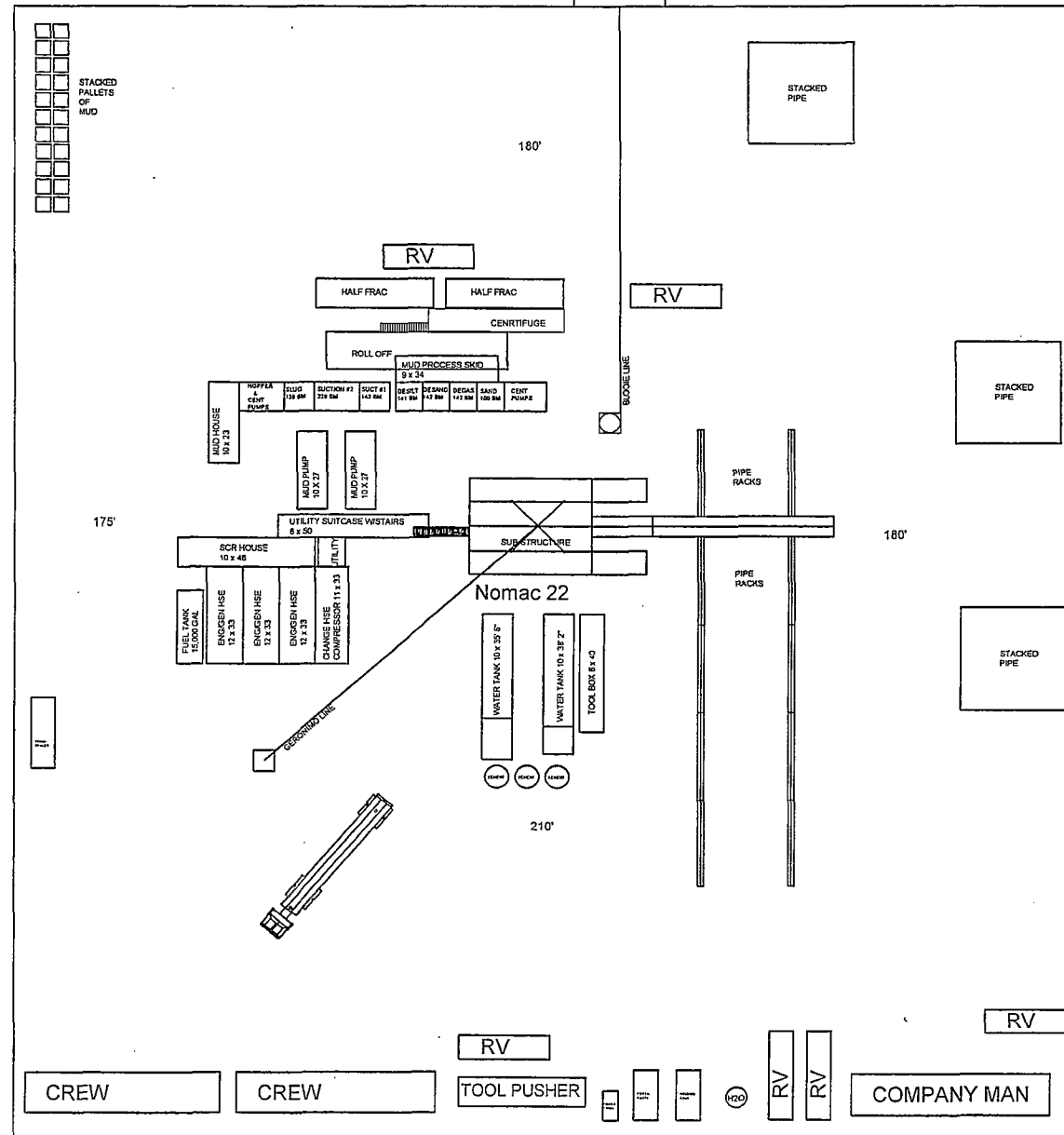
ALT EXIT

PAD LAYOUT
Scale: 1 inch = 50 feet

KigLayout #2

06-24-13

390.00



Scale: 1 inch = 60 feet

355.00

COMPANY MAN

Yates Petroleum Corporation

105 S. Fourth Street
Artesia, NM 88210

Hydrogen Sulfide (H₂S) Contingency Plan

For

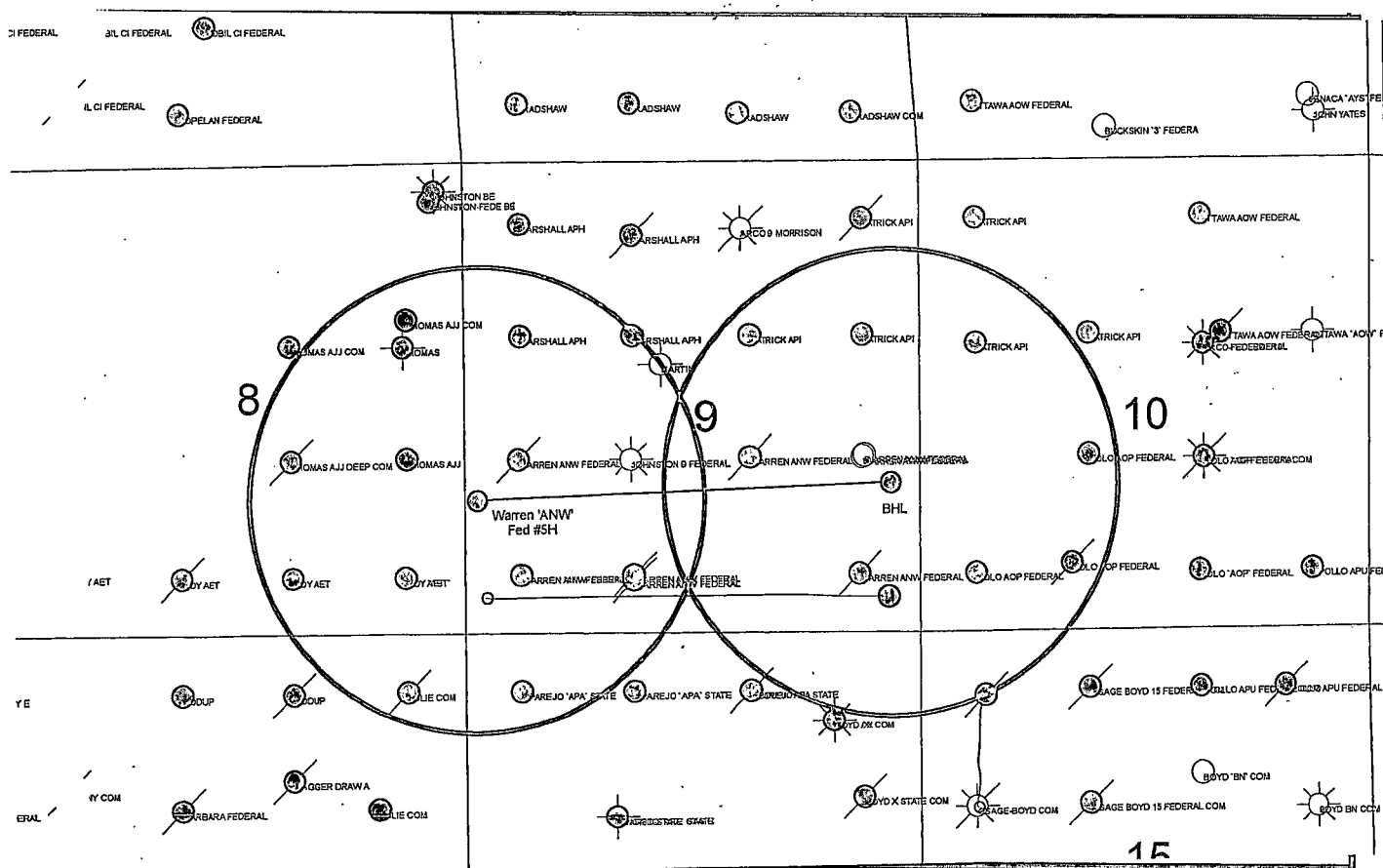
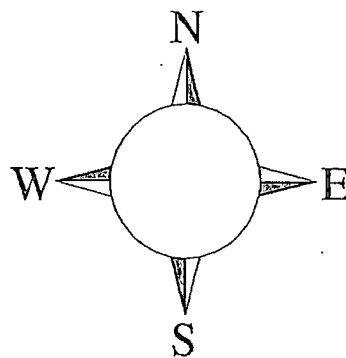
Warren ANW Federal #5H

1500' FSL and 150' FWL

Section 9, T-19-S, R-25-E

Eddy County, NM

This is an open drilling site. H₂S monitoring equipment and emergency response equipment will be used within 500' of zones known to contain H₂S, including warning signs, wind indicators and H₂S monitor.



Assumed 100 ppm ROE = 3000'

100 ppm H₂S concentration shall trigger activation of this plan.

Emergency Procedures

In the case of a release of gas containing H₂S, the first responder(s) must isolate the area and prevent entry by other persons into the 100 ppm ROE. Additionally the first responder(s) must evacuate any public places encompassed by the 100 ppm ROE. First responder(s) must take care not to injure themselves during this operation. Company and/or local officials must be contacted to aid in this operation. Evacuation of the public should be beyond the 100 ppm ROE.

All responders must have training in the detection of H₂S, measures for protection against the gas, equipment used for protection and emergency response. Additionally, responders must be equipped with H₂S monitors and air packs in order to control the release. Use the "buddy system" to ensure no injuries during the response.

Ignition of Gas Source

Should control of the well be considered lost and ignition considered, take care to protect against exposure to Sulfur Dioxide (SO₂). Intentional ignition must be coordinated with the NMOCD and local officials. Additionally the NM State Police may become involved. NM State Police shall be the Incident Command on scene of any major release. Take care to protect downwind whenever there is an ignition of the gas

Characteristics of H₂S and SO₂

Common Name	Chemical Formula	Specific Gravity	Threshold Limit	Hazardous Limit	Lethal Concentration
Hydrogen Sulfide	H ₂ S	1.189 Air = 1	10 ppm	100 ppm/hr	600 ppm
Sulfur Dioxide	SO ₂	2.21 Air = 1	2 ppm	N/A	1000 ppm

Contacting Authorities

YPC personnel must liaison with local and state agencies to ensure a proper response to a major release. Additionally, the OCD must be notified of the release as soon as possible but no later than 4 hours. Agencies will ask for information such as type and volume of release, wind direction, location of release, etc. Be prepared with all information available. The following call list of essential and potential responders has been prepared for use during a release. YPC Company response must be in coordination with the State of New Mexico's 'Hazardous Materials Emergency Response Plan' (HMER)

Yates Petroleum Corporation Phone Numbers

YPC Office	(575) 748-1471
Pinson McWhorter/Operations Manager	(575) 748-4189
LeeRoy Richards/Prod Superintendent	(575) 748-4228
Joe Chaves/Assistant Prod Superintendent	(575) 748-4212
Bruce Noles/Drilling	(575) 748-4224
Paul Hanes/Prod. Foreman/Roswell	(575) 624-2805
Tim Bussell/Drilling Superintendent	(575) 748-4221
Artesia Answering Service	(575) 748-4302
(During non-office hours)	

Agency Call List

Eddy County (575)

Artesia

State Police	746-2703
City Police.....	746-2703
Sheriff's Office	746-9888
Ambulance.....	911
Fire Department	746-2701
LEPC (Local Emergency Planning Committee)	746-2122
NMOCD.....	748-1283

Carlsbad

State Police	885-3137
City Police.....	885-2111
Sheriff's Office	887-7551
Ambulance.....	911
Fire Department	885-2111
LEPC (Local Emergency Planning Committee).....	887-3798
US Bureau of Land Management.....	887-6544
New Mexico Emergency Response Commission (Santa Fe)	(505) 476-9600
24 HR	(505) 827-9126
New Mexico State Emergency Operations Center.....	(505) 476-9635
National Emergency Response Center (Washington, DC)	...(800) 424-8802

Other

Boots & Coots IWC	1-800-256-9688 or (281) 931-8884
Cudd Pressure Control.....	(915) 699-0139 or (915) 563-3356
Halliburton	(575) 746-2757
B. J. Services.....	(575) 746-3569
Flight For Life -4000 24th St, Lubbock, TX	(806) 743-9911
Aerocare -Rr 3 Box 49f, Lubbock, TX	(806) 747-8923
Med Flight Air Amb 2301 Yale Blvd SE #D3, Albuq, NM	(505) 842-4433
S B Air Med Svc 2505 Clark Carr Loop SE, Albuq, NM	(505) 842-4949

Yates Petroleum Corporation

Hydrogen Sulfide Drilling Operation Plan

I. HYDROGEN SULFIDE TRAINING

All personnel, whether regularly assigned, contracted, or employed on an unscheduled basis, will receive training from a qualified instructor in the following areas prior to commencing drilling operations on this well:

1. The hazards and characteristics of hydrogen sulfide (H₂S).
2. The proper use and maintenance of personal protective equipment and life support systems.
3. The proper use of H₂S detectors, alarms, warning systems, briefing areas, evacuation procedures, and prevailing winds.
4. The proper techniques for first aid and rescue procedures.

In addition, supervisory personnel will be trained in the following areas:

1. The effects of H₂S on metal components. If high tensile tubular are to be used, personnel will be trained in their special maintenance requirements.
2. Corrective action and shut-in procedures when drilling or reworking a well and blowout prevention and well control procedures.
3. The contents and requirements of the H₂S Drilling Operations Plan and H₂S Contingency Plan.

There will be an initial training session just prior to encountering a known or probable H₂S zone (within 3 days or 500 feet) and weekly H₂S and well control drills for all personnel in each crew. The initial training session shall include a review of the site specific H₂S Drilling Operation Plan and the H₂S Contingency Plan. **The location of this well does not require a Public Protection Plan.**

II. H2S SAFETY EQUIPMENT AND SYSTEMS

NOTE: All H2S safety equipment and systems will be installed, tested, and operational when drilling reaches a depth of 500 feet above, or three days prior to penetrating the first zone containing or reasonably expected to contain H2S.

1. Well Control Equipment:

- A. Flare line
- B. Choke manifold will have a remotely operated adjustable choke system.
- C. Blind rams and pipe rams to accommodate all pipe sizes with properly sized closing unit
- D. Auxiliary equipment may include if applicable: annular preventer & rotating head.

2. Protective equipment for essential personnel:

- A. Mark II Survive Air (or equivalent) 30-minute units located in the doghouse and at briefing areas, as indicated on well site diagram.

3. H2S detection and monitoring equipment:

- A. 3 portable H2S monitors positioned at: Shale Shaker, Bell Nipple, and Rig Floor. These units have warning lights and audible sirens when H2S levels of 10 PPM are reached.

4. Visual warning systems:

- A. Wind direction indicators as shown on well site diagram (attached).
- B. Caution/Danger signs (attached) shall be posted on roads providing direct access to location. Signs will be painted with high visibility yellow with black lettering of a sufficient size to be readable at a reasonable distance from the immediate location. Bilingual signs will be used, when appropriate. See example attached.

5. Mud program:

- A. The mud program has been designed to minimize the volume of H2S circulated to the surface. Proper mud weight, safe drilling practices and the use of H2S scavengers will minimize hazards when penetrating H2S bearing zones.

6. Metallurgy:

- A. All drill strings, casings, tubing, wellhead, blowout preventer, drilling spool, kill lines, choke manifold and lines, and valves shall be suitable for H2S service.
- B. All elastomers used for packing and seals shall be H2S trim.

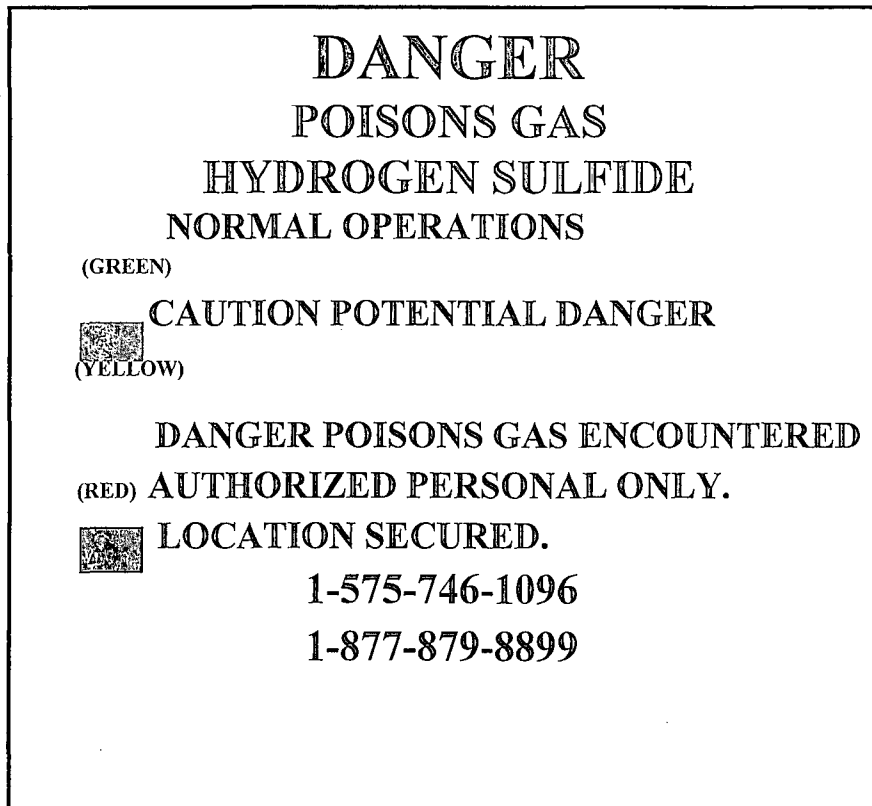
7. Communication:

- A. Cellular communications in company vehicles.
- B. Land line (telephone) communication at the Office.

8. Well testing:

- A. There will be no drill stem testing.

EXHIBIT



EDDY COUNTY EMERGENCY NUMBERS

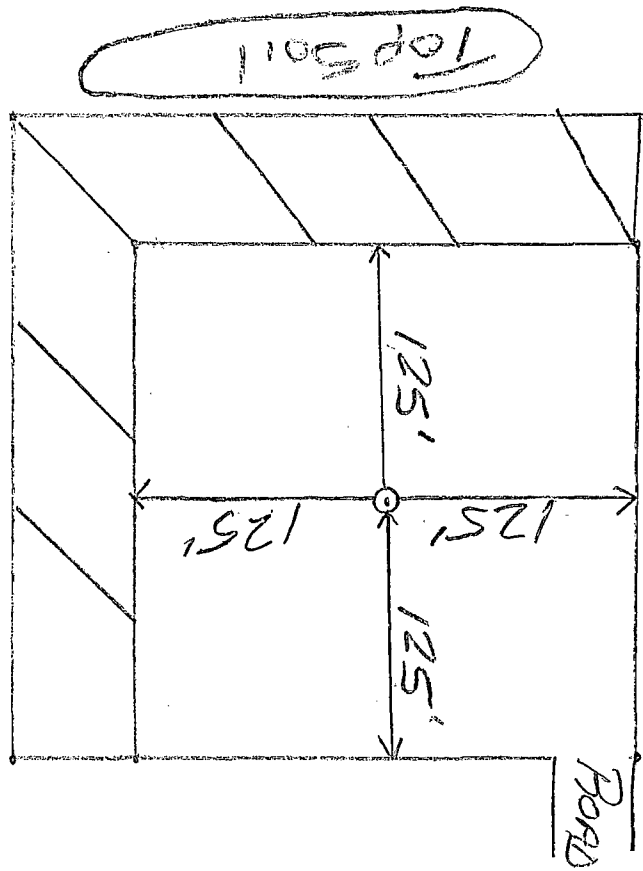
NUMBERS

ARTESIA FIRE DEPT. 575-746-5050
9308
ARTESIA POLICE DEPT. 575-746-5000
9285
EDDY CO. SHERIFF DEPT. 575-746-9888
396-1196

LEA COUNTY EMERGENCY

HOBBS FIRE DEPT. 575-397-
HOBBS POLICE DEPT. 575-397-
LEA CO. SHERIFF DEPT. 575-

WARREN RIVER
RECLAMATION
PLAT
FEDERAL #5H



POINT SURFACE USE AND OPERATIONS PLAN

Yates Petroleum Corporation

Warren ANW Federal #5H

1500' FSL & 150' FWL Surface Hole Location

1700' FSL and 330' FEL Bottom Hole Location

Section 9, T19S-R25E

Eddy County, New Mexico

This plan is submitted with Form 3160-3, Application for Permit to Drill, covering the above described well. The purpose of this plan is to describe the location of the proposed well, the proposed construction activities and operations plan, the magnitude of the surface disturbance involved and the procedures to be followed in rehabilitating the surface after completion of the operations, so that a complete appraisal can be made of the environmental effect associated with the operations.

1. EXISTING ROADS:

Exhibit A is a portion of the BLM map showing the well and roads in the vicinity of the proposed location. The proposed wellsite is located approximately 13 miles southwest of Artesia, New Mexico and the access route to the location is indicated in red and green on Exhibit A.

DIRECTIONS:

Go south of Artesia on Highway 285 for approximately 14 miles to Rockin R Red Road. Turn right on Rock R Red Road and go approximately 6.7 miles to a cattleguard with a swinging gate that is set back off of the pavement on the right side of the road. Go through the gate and go north on existing lease road for approximately 1.1 miles. Turn right here and go approximately .4 of a mile. Turn right and then left going a total of approximately .1 of a mile. At this point the lease road will go east. Follow the lease road east for approximately .4 of a mile. The new access road will start here going south for 75' to the northwest corner of the Warren ANW Federal #5H well location.

2. PLANNED ACCESS ROAD.

- A. The proposed new access will go south for approximately 75 feet to the northwest corner of the well location. The road will lie in a southerly direction. Please note survey plat showing the entire road route.
- B. The new road will be 14 feet in width (driving surface) and will be adequately drained to control runoff and soil erosion.
- C. The new road will be bladed with drainage on one side. The road will be crowned and ditched to a 2% slope from the tip of the crown to the edge of the driving surface. Ditches will be 3' wide with a 3:1 slopes New traffic turnouts will not be necessary for this portion of access road.
- D. The route of the road is visible.
- E. Existing roads will be maintained in the same or better condition.
- F. An application for an off lease road right of way will be submitted for this access road.

3. LOCATION OF EXISTING WELL

- A. There is drilling activity within a one-mile radius of the wellsite.
- B. An exhibit shows existing wells within a one-mile radius of the proposed wellsite.

4. LOCATION OF EXISTING AND/OR PROPOSED FACILITIES

- A. There are production facilities on this lease at the present time.
- B. There will not be a tank battery located on this well pad. In the event that the well is productive, production from the well will be sent via flowline to the Warren ANW Federal #3 Tank Battery located in the SW/SE/4 of Section 9. If the well is productive oil, a gas or diesel self-contained unit will be used to provide the necessary power. No power will be required if the well is productive of gas.

5. LOCATION AND TYPE OF WATER SUPPLY:

- A. It is planned to drill the proposed well with a fresh water system. The water will be obtained from the surface owner and will either be hauled to the location by truck over the existing and proposed roads or will be pumped via flowline to the well location from the frack pond. Exhibit A.

6. SOURCE OF CONSTRUCTION MATERIALS:

Dirt contractor will locate closest pit and obtain any permits and materials needed for construction of the well location.

7. METHODS OF HANDLING WASTE DISPOSAL:

- A. This well will be drilled with a closed loop system
- B. The closed loop system will be constructed, maintained, and closed in compliance with the State of New Mexico, Energy and Natural Resources Department, Oil Conservation Division – the “Pit Rule” 19.15.17 NMAC.
- C. Drilling fluids will be removed after drilling and completions are completed.
- D. Water produced during operations will be collected in tanks until hauled to an approved disposal system, or separate disposal application will be submitted.
- E. Oil produced during operations will be stored in tanks until sold.
- F. Current laws and regulations pertaining to the disposal of human waste will be complied with.
- G. All trash, junk, and other waste materials will be contained in trash cages or bins to prevent scattering and will be removed and deposited in an approved sanitary landfill. Burial on site is not approved.

8. ANCILLARY FACILITIES: None

9. WELLSITE LAYOUT:

- A. Exhibit C shows the relative location and dimensions of the well pad, location of the drilling equipment, pulling unit orientation and access road approach. The closed loop system will be constructed, maintained, and closed in compliance with the State of New Mexico, Energy and Natural Resources Department, Oil Conservation Division – the “Pit Rule” 19.15.17 NMAC. Yates has staked a 420' x 420' “Pad Clearance Area.” This area can contain the regularly used rigs Yates utilizes in Southeastern New Mexico. The actual pad size to be constructed would be smaller than the “Pad Clearance Area.” This area was staked at this size with aid from the BLM, since the actual pad size/drilling rig is unknown at this time. Yates will submit a Sundry Notice with a rig layout depicting the actual size of the pad to be constructed with the dimensions from the well bore to all four sides of the pad with

the same orientation as the "Pad Clearance Area." Yates will not construct the well pad until the rig layout is approved through the Sundry Notice.

- B. Please note exhibits Rig Size #1 and Rig Size #2 show the relative location and dimensions of the well pad, location of the drilling equipment, pulling unit orientation and access road approach. The closed loop system will be constructed, maintained, and closed in compliance with the State of New Mexico, Energy and Natural Resources Department, Oil Conservation Division – the "Pit Rule" 19.15.17 NMAC.
- C. A 600' x 600' area has been staked and flagged.

10. PLANS FOR RESTORATION

- A. After finishing drilling and/or completion operations, all equipment and other material not needed for further operations will be removed. The location will be cleaned of all trash and junk to leave the well site in as aesthetically pleasing a condition as possible. The location will be reduced to a 250' x 250' after completion operations have been conducted. At this point the surfacing material will be removed, topsoil will be redistributed and the area will be reseeded. Please note attached Reclamation Plat.
- B. If the proposed well is plugged and abandoned, all equipment and other material will be removed. The location will be cleaned of all trash and junk to leave the well site in as aesthetically pleasing a condition as possible. At this point the surfacing material will be removed, topsoil will be redistributed and the area will be reseeded. These actions will be completed and accomplished as expeditiously as possible.

11. SURFACE OWNERSHIP:

Surface Estate: James H. and Betty R. Howell Revocable Trust
Attention: Cheryl Griffith
P.O. Box 75
Lakewood, NM 88254
(575) 703-6159

Mineral Estate: Bureau of Land Management
620 East Greene Street
Carlsbad, NM 88220

A surface use agreement has been reached with the James H. Howell and Betty R. Howell Revocable Trust. Please feel free to contact Ms. Cheryl Griffith, Designated Representative for the trust at the above address and cell phone number for more details.

12. OTHER INFORMATION:

- A. Topography: Refer to the existing archaeological report for a description of the topography, flora, fauna, soil characteristics, dwellings, historical and cultural sites.
- B. The primary surface use is for grazing.

PECOS DISTRICT CONDITIONS OF APPROVAL

OPERATOR'S NAME:	Yates Petroleum Corporation
LEASE NO.:	NMNM-1372
WELL NAME & NO.:	Warren ANW Federal 5H
SURFACE HOLE FOOTAGE:	1500' FSL & 0150' FWL
BOTTOM HOLE FOOTAGE:	1700' FSL & 0330' FEL
LOCATION:	Section 09, T. 19 S., R 25 E., NMPM
COUNTY:	Eddy County, New Mexico

TABLE OF CONTENTS

Standard Conditions of Approval (COA) apply to this APD. If any deviations to these standards exist or special COAs are required, the section with the deviation or requirement will be checked below.

- ☐ **General Provisions**
- ☐ **Permit Expiration**
- ☐ **Archaeology, Paleontology, and Historical Sites**
- ☐ **Noxious Weeds**
- ☐ **Special Requirements**
- ☐ **Construction**
 - Notification
 - Topsoil
 - Closed Loop System
 - Federal Mineral Material Pits
 - Well Pads
 - Roads
- ☐ **Road Section Diagram**
- ☒ **Drilling**
 - H2S Requirements
 - Cement Requirements
 - Medium/Karst
 - Logging Requirements
 - Waste Material and Fluids
- ☐ **Production (Post Drilling)**
 - Well Structures & Facilities
 - Pipelines
- ☐ **Interim Reclamation**
- ☐ **Final Abandonment & Reclamation**

I. GENERAL PROVISIONS

The approval of the Application For Permit To Drill (APD) is in compliance with all applicable laws and regulations: 43 Code of Federal Regulations 3160, the lease terms, Onshore Oil and Gas Orders, Notices To Lessees, New Mexico Oil Conservation Division (NMOCD) Rules, National Historical Preservation Act As Amended, and instructions and orders of the Authorized Officer. Any request for a variance shall be submitted to the Authorized Officer on Form 3160-5, Sundry Notices and Report on Wells.

II. PERMIT EXPIRATION

If the permit terminates prior to drilling and drilling cannot be commenced within 60 days after expiration, an operator is required to submit Form 3160-5, Sundry Notices and Reports on Wells, requesting surface reclamation requirements for any surface disturbance. However, if the operator will be able to initiate drilling within 60 days after the expiration of the permit, the operator must have set the conductor pipe in order to allow for an extension of 60 days beyond the expiration date of the APD. (Filing of a Sundry Notice is required for this 60 day extension.)

III. ARCHAEOLOGICAL, PALEONTOLOGY & HISTORICAL SITES

Any cultural and/or paleontological resource discovered by the operator or by any person working on the operator's behalf shall immediately report such findings to the Authorized Officer. The operator is fully accountable for the actions of their contractors and subcontractors. The operator shall suspend all operations in the immediate area of such discovery until written authorization to proceed is issued by the Authorized Officer. An evaluation of the discovery shall be made by the Authorized Officer to determine the appropriate actions that shall be required to prevent the loss of significant cultural or scientific values of the discovery. The operator shall be held responsible for the cost of the proper mitigation measures that the Authorized Officer assesses after consultation with the operator on the evaluation and decisions of the discovery. Any unauthorized collection or disturbance of cultural or paleontological resources may result in a shutdown order by the Authorized Officer.

IV. NOXIOUS WEEDS

The operator shall be held responsible if noxious weeds become established within the areas of operations. Weed control shall be required on the disturbed land where noxious weeds exist, which includes the roads, pads, associated pipeline corridor, and adjacent land affected by the establishment of weeds due to this action. The operator shall consult with the Authorized Officer for acceptable weed control methods, which include following EPA and BLM requirements and policies.

V. SPECIAL REQUIREMENT(S)

VI. CONSTRUCTION

A. NOTIFICATION

The BLM shall administer compliance and monitor construction of the access road and well pad. Notify the Carlsbad Field Office at (575) 234-5909 at least 3 working days prior to commencing construction of the access road and/or well pad.

When construction operations are being conducted on this well, the operator shall have the approved APD and Conditions of Approval (COA) on the well site and they shall be made available upon request by the Authorized Officer.

B. TOPSOIL

The operator shall strip the top portion of the soil (root zone) from the entire well pad area and stockpile the topsoil along the edge of the well pad as depicted in the APD. The root zone is typically six (6) inches in depth. All the stockpiled topsoil will be redistributed over the interim reclamation areas. Topsoil shall not be used for berming the pad or facilities. For final reclamation, the topsoil shall be spread over the entire pad area for seeding preparation.

Other subsoil (below six inches) stockpiles must be completely segregated from the topsoil stockpile. Large rocks or subsoil clods (not evident in the surrounding terrain) must be buried within the approved area for interim and final reclamation.

C. CLOSED LOOP SYSTEM

Tanks are required for drilling operations: No Pits.

The operator shall properly dispose of drilling contents at an authorized disposal site.

D. FEDERAL MINERAL MATERIALS PIT

Payment shall be made to the BLM prior to removal of any federal mineral materials. Call the Carlsbad Field Office at (575) 234-5972.

E. WELL PAD SURFACING

Surfacing of the well pad is not required.

If the operator elects to surface the well pad, the surfacing material may be required to be removed at the time of reclamation. The well pad shall be constructed in a manner which creates the smallest possible surface disturbance, consistent with safety and operational needs.

F. EXCLOSURE FENCING (CELLARS & PITS)

Exclosure Fencing

The operator will install and maintain exclosure fencing for all open well cellars to prevent access to public, livestock, and large forms of wildlife before and after drilling operations until the pit is free of fluids and the operator initiates backfilling. (For examples of exclosure fencing design, refer to BLM's Oil and Gas Gold Book, Exclosure Fence Illustrations, Figure 1, Page 18.)

G. ON LEASE ACCESS ROADS

Road Width

The access road shall have a driving surface that creates the smallest possible surface disturbance and does not exceed fourteen (14) feet in width. The maximum width of surface disturbance, when constructing the access road, shall not exceed twenty-five (25) feet.

Surfacing

Surfacing material is not required on the new access road driving surface. If the operator elects to surface the new access road or pad, the surfacing material may be required to be removed at the time of reclamation.

Where possible, no improvements should be made on the unsurfaced access road other than to remove vegetation as necessary, road irregularities, safety issues, or to fill low areas that may sustain standing water.

The Authorized Officer reserves the right to require surfacing of any portion of the access road at any time deemed necessary. Surfacing may be required in the event the road deteriorates, erodes, road traffic increases, or it is determined to be beneficial for future field development. The surfacing depth and type of material will be determined at the time of notification.

Crowning

Crowning shall be done on the access road driving surface. The road crown shall have a grade of approximately 2% (i.e., a 1" crown on a 14' wide road). The road shall conform to Figure 1; cross section and plans for typical road construction.

Ditching

Ditching shall be required on both sides of the road.

Turnouts

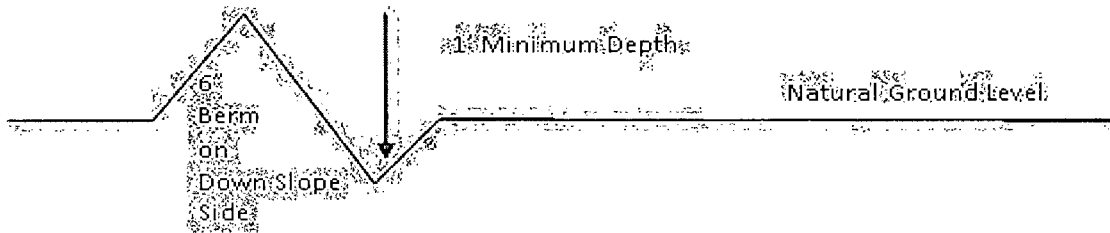
Vehicle turnouts shall be constructed on the road. Turnouts shall be intervisible with interval spacing distance less than 1000 feet. Turnouts shall conform to Figure 1; cross section and plans for typical road construction.

Drainage

Drainage control systems shall be constructed on the entire length of road (e.g. ditches, sidehill outslowing and insloping, lead-off ditches, culvert installation, and low water crossings).

A typical lead-off ditch has a minimum depth of 1 foot below and a berm of 6 inches above natural ground level. The berm shall be on the down-slope side of the lead-off ditch.

Cross Section of a Typical Lead-off Ditch



All lead-off ditches shall be graded to drain water with a 1 percent minimum to 3 percent maximum ditch slope. The spacing interval are variable for lead-off ditches and shall be determined according to the formula for spacing intervals of lead-off ditches, but may be amended depending upon existing soil types and centerline road slope (in %);

Formula for Spacing Interval of Lead-off Ditches

Example - On a 4% road slope that is 400 feet long, the water flow shall drain water into a lead-off ditch. Spacing interval shall be determined by the following formula:

$$400 \text{ foot road with } 4\% \text{ road slope: } \frac{400'}{4\%} + 100' = 200' \text{ lead-off ditch interval}$$

Cattleguards

An appropriately sized cattleguard sufficient to carry out the project shall be installed and maintained at fence/road crossings. Any existing cattleguards on the access road route shall be repaired or replaced if they are damaged or have deteriorated beyond practical use. The operator shall be responsible for the condition of the existing cattleguards that are in place and are utilized during lease operations.

Fence Requirement

Where entry is granted across a fence line, the fence shall be braced and tied off on both sides of the passageway prior to cutting. The operator shall notify the private surface landowner or the grazing allotment holder prior to crossing any fences.

Public Access

Public access on this road shall not be restricted by the operator without specific written approval granted by the Authorized Officer.

Construction Steps

1. Salvage topsoil
2. Construct road

3. Redistribute topsoil
4. Revegetate slopes

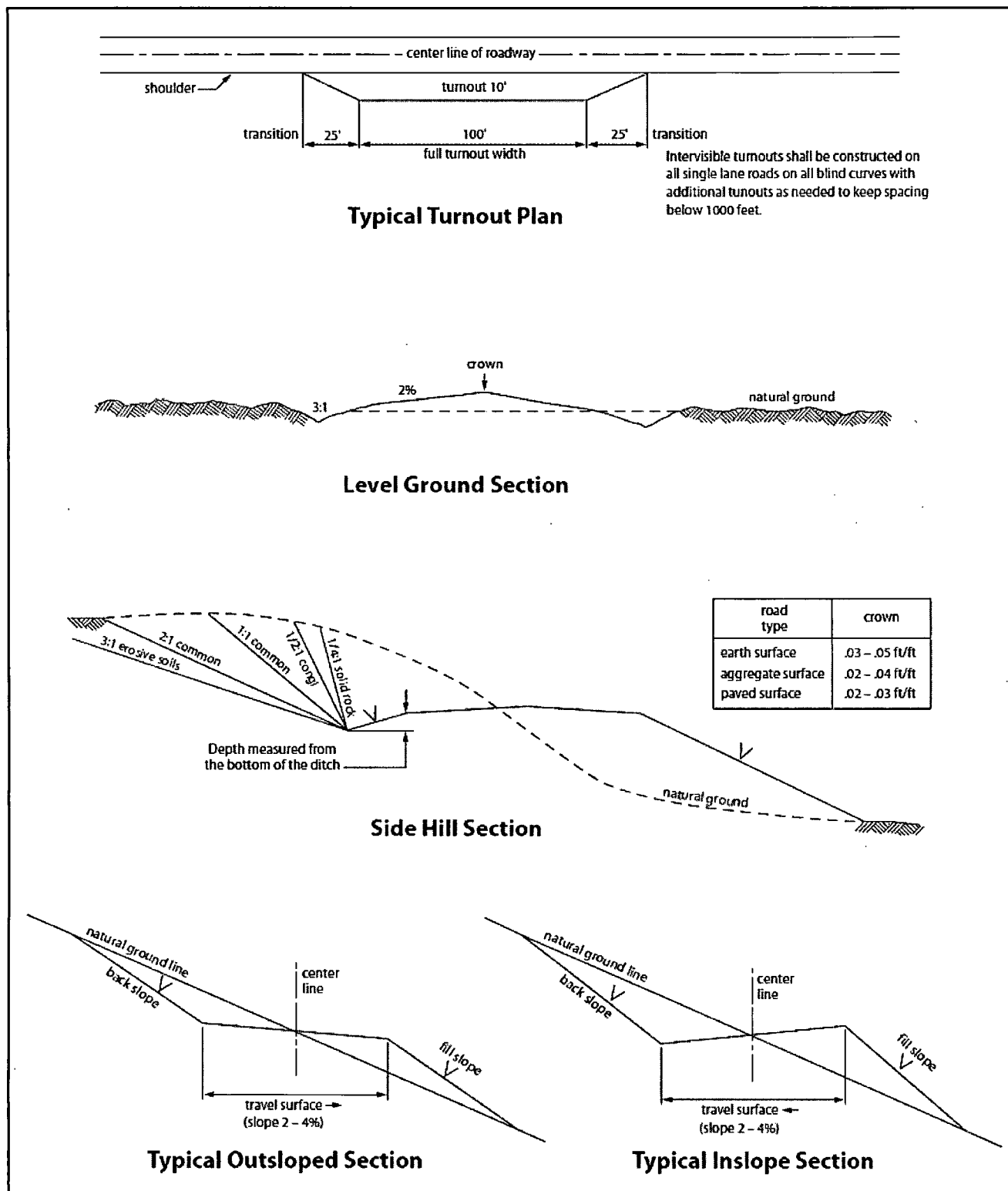


Figure 1. Cross-sections and plans for typical road sections representative of BLM resource or FS local and higher-class roads.

VII. DRILLING

A. DRILLING OPERATIONS REQUIREMENTS

The BLM is to be notified in advance for a representative to witness:

- a. Spudding well (minimum of 24 hours)
- b. Setting and/or Cementing of all casing strings (minimum of 4 hours)
- c. BOPE tests (minimum of 4 hours)

☒ **Eddy County**

Call the Carlsbad Field Office, 620 East Greene St., Carlsbad, NM 88220,
(575) 361-2822

1. **Hydrogen Sulfide has been reported as a hazard in formations deeper than the proposed depth. Operator has stated that they will have monitoring equipment in place prior to drilling out of the surface shoe. If Hydrogen Sulfide is encountered, report measurements and formations to the BLM.**
2. Unless the production casing has been run and cemented or the well has been properly plugged, the drilling rig shall not be removed from over the hole without prior approval. **If the drilling rig is removed without approval – an Incident of Non-Compliance will be written and will be a “Major” violation.**
3. Floor controls are required for 3M or Greater systems. These controls will be on the rig floor, unobstructed, readily accessible to the driller and will be operational at all times during drilling and/or completion activities. Rig floor is defined as the area immediately around the rotary table; the area immediately above the substructure on which the draw works is located, this does not include the dog house or stairway area.
4. **The record of the drilling rate along with the GR/N well log run from TD to surface (horizontal well – vertical portion of hole) shall be submitted to the BLM office as well as all other logs run on the borehole 30 days from completion. If available, a digital copy of the logs is to be submitted in addition to the paper copies.**

B. CASING

Changes to the approved APD casing program need prior approval if the items substituted are of lesser grade or different casing size. The Operator can exchange the components of the proposal with that of superior strength (i.e. changing from J-55 to N-80, or from 36# to 40#). Changes to the approved cement program need prior approval if the altered cement plan has less volume or strength or if the changes are substantial (i.e. Multistage tool, ECP, etc.).

Centralizers required on surface casing per Onshore Order 2.III.B.1.f.

Wait on cement (WOC) time prior to drilling out for a primary cement job will be a minimum 18 hours for a water basin, 24 hours in the potash area, or 500 pounds compressive strength, whichever is greater for all casing strings. DURING THIS WOC TIME, NO DRILL PIPE, ETC. SHALL BE RUN IN THE HOLE. Provide compressive strengths including hours to reach required 500 pounds compressive strength prior to cementing each casing string. IF OPERATOR DOES NOT HAVE THE WELL SPECIFIC CEMENT DETAILS ONSITE PRIOR TO PUMPING THE CEMENT FOR EACH CASING STRING, THE WOC WILL BE 30 HOURS. See individual casing strings for details regarding lead cement slurry requirements.

No pea gravel permitted for remedial or fall back remedial without prior authorization from the BLM engineer.

Medium Cave/Karst

Possibility of water flows in the San Andres.

Possibility of lost circulation in the San Andres and Grayburg.

1. The 9-5/8 inch surface casing shall be set at approximately 800 feet and cemented to the surface.
 - a. If cement does not circulate to the surface, the appropriate BLM office shall be notified and a temperature survey utilizing an electronic type temperature survey with surface log readout will be used or a cement bond log shall be run to verify the top of the cement. Temperature survey will be run a minimum of six hours after pumping cement and ideally between 8-10 hours after completing the cement job.
 - b. **Wait on cement (WOC) time for a primary cement job is to include the lead cement slurry.**
 - c. Wait on cement (WOC) time for a remedial job will be a minimum of 4 hours after bringing cement to surface or 500 pounds compressive strength, whichever is greater.
 - d. If cement falls back, remedial cementing will be done prior to drilling out that string.

Centralizers required on horizontal leg, must be type for horizontal service and a minimum of one every other joint.

2. The minimum required fill of cement behind the 5-1/2 inch production casing is:

- ☒ Cement to surface. If cement does not circulate, contact the appropriate BLM office.

3. If hardband drill pipe is rotated inside casing, returns will be monitored for metal. If metal is found in samples, drill pipe will be pulled and rubber protectors which have a larger diameter than the tool joints of the drill pipe will be installed prior to continuing drilling operations.

C. PRESSURE CONTROL

1. All blowout preventer (BOP) and related equipment (BOPE) shall comply with well control requirements as described in Onshore Oil and Gas Order No. 2 and API RP 53 Sec. 17.
2. Minimum working pressure of the blowout preventer (BOP) and related equipment (BOPE) required for drilling below the surface casing shoe shall be **3000 (3M)** psi.
3. The appropriate BLM office shall be notified a minimum of 4 hours in advance for a representative to witness the tests.
 - a. In a water basin, for all casing strings utilizing slips, these are to be set as soon as the crew and rig are ready and any fallback cement remediation has been done. The casing cut-off and BOP installation can be initiated four hours after installing the slips, which will be approximately six hours after bumping the plug. For those casing strings not using slips, the minimum wait time before cut-off is eight hours after bumping the plug. BOP/BOPE testing can begin after cut-off or once cement reaches 500 psi compressive strength (including lead when specified), whichever is greater. However, if the float does not hold, cut-off cannot be initiated until cement reaches 500 psi compressive strength (including lead when specified).
 - b. The tests shall be done by an independent service company utilizing a test plug **not a cup or J-packer**.
 - c. The test shall be run on a 5000 psi chart for a 2-3M BOP/BOP, on a 10000 psi chart for a 5M BOP/BOPE and on a 15000 psi chart for a 10M BOP/BOPE. If a linear chart is used, it shall be a one hour chart. A circular chart shall have a maximum 2 hour clock. If a twelve hour or twenty-four hour chart is used, tester shall make a notation that it is run with a two hour clock.
 - d. The results of the test shall be reported to the appropriate BLM office.
 - e. All tests are required to be recorded on a calibrated test chart. **A copy of the BOP/BOPE test chart and a copy of independent service company test will be submitted to the appropriate BLM office.**

- f. The BOP/BOPE test shall include a low pressure test from 250 to 300 psi. The test will be held for a minimum of 10 minutes if test is done with a test plug and 30 minutes without a test plug. This test shall be performed prior to the test at full stack pressure.

D. DRILL STEM TEST

If drill stem tests are performed, Onshore Order 2.III.D shall be followed.

E. WASTE MATERIAL AND FLUIDS

All waste (i.e. drilling fluids, trash, salts, chemicals, sewage, gray water, etc.) created as a result of drilling operations and completion operations shall be safely contained and disposed of properly at a waste disposal facility. No waste material or fluid shall be disposed of on the well location or surrounding area.

Porto-johns and trash containers will be on-location during fracturing operations or any other crew-intensive operations.

JAM 042314

VIII. PRODUCTION (POST DRILLING)

A. WELL STRUCTURES & FACILITIES

Placement of Production Facilities

Production facilities should be placed on the well pad to allow for maximum interim recontouring and revegetation of the well location.

Exclosure Netting (Open-top Tanks)

Immediately following active drilling or completion operations, the operator will take actions necessary to prevent wildlife and livestock access, including avian wildlife, to all open-topped tanks that contain or have the potential to contain salinity sufficient to cause harm to wildlife or livestock, hydrocarbons, or Resource Conservation and Recovery Act of 1976-exempt hazardous substances. At a minimum, the operator will net, screen, or cover open-topped tanks to exclude wildlife and livestock and prevent mortality. If the operator uses netting, the operator will cover and secure the open portion of the tank to prevent wildlife entry. The operator will net, screen, or cover the tanks until the operator removes the tanks from the location or the tanks no longer contain substances that could be harmful to wildlife or livestock. Use a maximum netting mesh size of 1 ½ inches. The netting must not be in contact with fluids and must not have holes or gaps.

Chemical and Fuel Secondary Containment and Exclosure Screening

The operator will prevent all hazardous, poisonous, flammable, and toxic substances from coming into contact with soil and water. At a minimum, the operator will install and maintain an impervious secondary containment system for any tank or barrel containing hazardous, poisonous, flammable, or toxic substances sufficient to contain the contents of the tank or barrel and any drips, leaks, and anticipated precipitation. The operator will dispose of fluids within the containment system that do not meet applicable state or U. S. Environmental Protection Agency livestock water standards in accordance with state law; the operator must not drain the fluids to the soil or ground. The operator will design, construct, and maintain all secondary containment systems to prevent wildlife and livestock exposure to harmful substances. At a minimum, the operator will install effective wildlife and livestock exclosure systems such as fencing, netting, expanded metal mesh, lids, and grate covers. Use a maximum netting mesh size of 1 ½ inches.

Open-Vent Exhaust Stack Exclosures

The operator will construct, modify, equip, and maintain all open-vent exhaust stacks on production equipment to prevent birds and bats from entering, and to discourage perching, roosting, and nesting. (*Recommended exclosure structures on open-vent exhaust stacks are in the shape of a cone.*) Production equipment includes, but may not be limited to, tanks, heater-treaters, separators, dehydrators, flare stacks, in-line units, and compressor mufflers.

Containment Structures

Proposed production facilities such as storage tanks and other vessels will have a secondary containment structure that is constructed to hold the capacity of 1.5 times the

largest tank, plus freeboard to account for precipitation, unless more stringent protective requirements are deemed necessary.

Painting Requirement

All above-ground structures including meter housing that are not subject to safety requirements shall be painted a flat non-reflective paint color, **Shale Green** from the BLM Standard Environmental Color Chart (CC-001: June 2008).

B. PIPELINES

STANDARD STIPULATIONS FOR SURFACE INSTALLED PIPELINES

A copy of the application (Grant, Sundry Notice, APD) and attachments, including stipulations, survey plat and/or map, will be on location during construction. BLM personnel may request to you a copy of your permit during construction to ensure compliance with all stipulations.

Holder agrees to comply with the following stipulations to the satisfaction of the Authorized Officer:

1. The holder shall indemnify the United States against any liability for damage to life or property arising from the occupancy or use of public lands under this grant.
2. The holder shall comply with all applicable Federal laws and regulations existing or hereafter enacted or promulgated. In any event, the holder shall comply with the Toxic Substances Control Act of 1976 as amended, 15 USC 2601 et seq. (1982) with regards to any toxic substances that are used, generated by or stored on the right-of-way or on facilities authorized under this right-of-way grant. (See 40 CFR, Part 702-799 and especially, provisions on polychlorinated biphenyls, 40 CFR 761.1-761.193.) Additionally, any release of toxic substances (leaks, spills, etc.) in excess of the reportable quantity established by 40 CFR, Part 117 shall be reported as required by the Comprehensive Environmental Response, Compensation, and Liability Act, section 102b. A copy of any report required or requested by any Federal agency or State government as a result of a reportable release or spill of any toxic substances shall be furnished to the authorized officer concurrent with the filing of the reports to the involved Federal agency or State government.
3. The holder agrees to indemnify the United States against any liability arising from the release of any hazardous substance or hazardous waste (as these terms are defined in the Comprehensive Environmental Response, Compensation and Liability Act of 1980, 42 U.S.C. 9601, et seq. or the Resource Conservation and Recovery Act, 42 U.S.C. 6901, et seq.) on the Right-of-Way (unless the release or threatened release is wholly unrelated to activity of the Right-of-Way holder's activity on the Right-of-Way), or resulting from the activity of the Right-of-Way holder on the Right-of-Way. This agreement applies without regard to whether a release is caused by the holder, its agent, or unrelated third parties.
4. The holder shall be liable for damage or injury to the United States to the extent

provided by 43 CFR Sec. 2883.1-4. The holder shall be held to a standard of strict liability for damage or injury to the United States resulting from pipe rupture, fire, or spills caused or substantially aggravated by any of the following within the right-of-way or permit area:

- a. Activities of the holder including, but not limited to construction, operation, maintenance, and termination of the facility.
- b. Activities of other parties including, but not limited to:
 - (1) Land clearing.
 - (2) Earth-disturbing and earth-moving work.
 - (3) Blasting.
 - (4) Vandalism and sabotage.
- c. Acts of God.

The maximum limitation for such strict liability damages shall not exceed one million dollars (\$1,000,000) for any one event, and any liability in excess of such amount shall be determined by the ordinary rules of negligence of the jurisdiction in which the damage or injury occurred.

This section shall not impose strict liability for damage or injury resulting primarily from an act of war or from the negligent acts or omissions of the United States.

5. If, during any phase of the construction, operation, maintenance, or termination of the pipeline, any oil, salt water, or other pollutant should be discharged from the pipeline system, impacting Federal lands, the control and total removal, disposal, and cleaning up of such oil, salt water, or other pollutant, wherever found, shall be the responsibility of the holder, regardless of fault. Upon failure of the holder to control, dispose of, or clean up such discharge on or affecting Federal lands, or to repair all damages resulting therefrom, on the Federal lands, the Authorized Officer may take such measures as he deems necessary to control and clean up the discharge and restore the area, including, where appropriate, the aquatic environment and fish and wildlife habitats, at the full expense of the holder. Such action by the Authorized Officer shall not relieve the holder of any responsibility as provided herein.

6. All construction and maintenance activity will be confined to the authorized right-of-way width of 20 feet. If the pipeline route follows an existing road or buried pipeline right-of-way, the surface pipeline must be installed no farther than 10 feet from the edge of the road or buried pipeline right-of-way. If existing surface pipelines prevent this distance, the proposed surface pipeline must be installed immediately adjacent to the outer surface pipeline. All construction and maintenance activity will be confined to existing roads or right-of-ways.

7. No blading or clearing of any vegetation will be allowed unless approved in writing by the Authorized Officer.

8. The holder shall install the pipeline on the surface in such a manner that will minimize

suspension of the pipeline across low areas in the terrain. In hummocky or dune areas, the pipeline will be "snaked" around hummocks and dunes rather than suspended across these features.

9. The pipeline shall be buried with a minimum of 24 inches under all roads, "two-tracks," and trails. Burial of the pipe will continue for 20 feet on each side of each crossing. The condition of the road, upon completion of construction, shall be returned to at least its former state with no bumps or dips remaining in the road surface.

10. The holder shall minimize disturbance to existing fences and other improvements on public lands. The holder is required to promptly repair improvements to at least their former state. Functional use of these improvements will be maintained at all times. The holder will contact the owner of any improvements prior to disturbing them. When necessary to pass through a fence line, the fence shall be braced on both sides of the passageway prior to cutting of the fence. No permanent gates will be allowed unless approved by the Authorized Officer.

11. In those areas where erosion control structures are required to stabilize soil conditions, the holder will install such structures as are suitable for the specific soil conditions being encountered and which are in accordance with sound resource management practices.

12. Excluding the pipe, all above-ground structures not subject to safety requirement shall be painted by the holder to blend with the natural color of the landscape. The paint used shall be a color which simulates "Standard Environmental Colors" – **Shale Green**, Munsell Soil Color No. 5Y 4/2; designated by the Rocky Mountain Five State Interagency Committee.

13. The pipeline will be identified by signs at the point of origin and completion of the right-of-way and at all road crossings. At a minimum, signs will state the holder's name, BLM serial number, and the product being transported. Signs will be maintained in a legible condition for the life of the pipeline.

14. The holder shall not use the pipeline route as a road for purposes other than routine maintenance as determined necessary by the Authorized Officer in consultation with the holder. The holder will take whatever steps are necessary to ensure that the pipeline route is not used as a roadway.

15. Any cultural and/or paleontological resource (historic or prehistoric site or object) discovered by the holder, or any person working on his behalf, on public or Federal land shall be immediately reported to the authorized officer. Holder shall suspend all operations in the immediate area of such discovery until written authorization to proceed is issued by the authorized officer. An evaluation of the discovery will be made by the authorized officer to determine appropriate cultural or scientific values. The holder will be responsible for the cost of evaluation and any decision as to proper mitigation measures will be made by the authorized officer after consulting with the holder.

16. The operator shall be held responsible if noxious weeds become established within the areas of operations. Weed control shall be required on the disturbed land where noxious weeds exist, which includes the roads, powerline corridor, and adjacent land affected by the establishment of weeds due to this action. The operator shall consult with the Authorized Officer for acceptable weed control methods, which include following EPA and BLM requirements and policies.

17. Surface pipelines must be less than or equal to 4 inches and a working pressure below 125 psi.

C. ELECTRIC LINES (Not applied for in APD)

IX. INTERIM RECLAMATION

During the life of the development, all disturbed areas not needed for active support of production operations should undergo interim reclamation in order to minimize the environmental impacts of development on other resources and uses.

Within six (6) months of well completion, operators should work with BLM surface management specialists (Jim Amos: 575-234-5909) to devise the best strategies to reduce the size of the location. Interim reclamation should allow for remedial well operations, as well as safe and efficient removal of oil and gas.

During reclamation, the removal of caliche is important to increasing the success of revegetating the site. Removed caliche that is free of contaminants may be used for road repairs, fire walls or for building other roads and locations. In order to operate the well or complete workover operations, it may be necessary to drive, park and operate on restored interim vegetation within the previously disturbed area. Disturbing revegetated areas for production or workover operations will be allowed. If there is significant disturbance and loss of vegetation, the area will need to be revegetated. Communicate with the appropriate BLM office for any exceptions/exemptions if needed.

All disturbed areas after they have been satisfactorily prepared need to be reseeded with the seed mixture provided below.

Upon completion of interim reclamation, the operator shall submit a Sundry Notices and Reports on Wells, Subsequent Report of Reclamation (Form 3160-5).

X. FINAL ABANDONMENT & RECLAMATION

At final abandonment, well locations, production facilities, and access roads must undergo "final" reclamation so that the character and productivity of the land are restored.

Earthwork for final reclamation must be completed within six (6) months of well plugging. All pads, pits, facility locations and roads must be reclaimed to a satisfactory revegetated, safe, and stable condition, unless an agreement is made with the landowner or BLM to keep the road and/or pad intact.

After all disturbed areas have been satisfactorily prepared, these areas need to be revegetated with the seed mixture provided below. Seeding should be accomplished by drilling on the contour whenever practical or by other approved methods. Seeding may need to be repeated until revegetation is successful, as determined by the BLM.

Operators shall contact a BLM surface protection specialist prior to surface abandonment operations for site specific objectives (Jim Amos: 575-234-5909).

Seed Mixture 1, for Loamy Sites

The holder shall seed all disturbed areas with the seed mixture listed below. The seed mixture shall be planted in the amounts specified in pounds of pure live seed (PLS)* per acre. There shall be no primary or secondary noxious weeds in the seed mixture. Seed will be tested and the viability testing of seed will be done in accordance with State law(s) and within nine (9) months prior to purchase. Commercial seed will be either certified or registered seed. The seed container will be tagged in accordance with State law(s) and available for inspection by the authorized officer.

Seed will be planted using a drill equipped with a depth regulator to ensure proper depth regulator to ensure proper depth of planting where drilling is possible. The seed mixture will be evenly and uniformly planted over the disturbed area (small/heavier seeds have a tendency to drop the bottom of the drill and are planted first). The holder shall take appropriate measures to ensure this does not occur. Where drilling is not possible, seed will be broadcast and the area shall be raked or chained to cover the seed. When broadcasting the seed, the pounds per acre are to be doubled. The seeding will be repeated until a satisfactory stand is established as determined by the authorized officer. Evaluation of growth will not be made before completion of at least one full growing season after seeding.

Species to be planted in pounds of pure live seed* per acre:

<u>Species</u>	<u>lb/acre</u>
Plains lovegrass (<i>Eragrostis intermedia</i>)	0.5
Sand dropseed (<i>Sporobolus cryptandrus</i>)	1.0
Sideoats grama (<i>Bouteloua curtipendula</i>)	5.0
Plains bristlegrass (<i>Setaria macrostachya</i>)	2.0

*Pounds of pure live seed:

Pounds of seed x percent purity x percent germination = pounds pure live seed