

UNITED STATES
DEPARTMENT OF THE INTERIOR
BUREAU OF LAND MANAGEMENT

OCD Artesia

FORM APPROVED
OMB NO. 1004-0135
Expires: July 31, 2010**SUNDRY NOTICES AND REPORTS ON WELLS**
Do not use this form for proposals to drill or to re-enter an abandoned well. Use form 3160-3 (APD) for such proposals.5. Lease Serial No.
NMNM0499988

6. If Indian, Allottee or Tribe Name

SUBMIT IN TRIPLICATE - Other instructions on reverse side.7. If Unit or CA/Agreement, Name and/or No.
891014168X

1. Type of Well

☒ Oil Well ☐ Gas Well ☐ Other8. Well Name and No.
NASH UNIT 43H

2. Name of Operator

XTO ENERGY INCORPORATED

Contact: STEPHANIE RABADUE

E-Mail: stephanie_rabadue@xtoenergy.com

9. API Well No.

30-015-42206-00-X1

3a. Address

200 LORAIN SUITE 800
MIDLAND, TX 79701

3b. Phone No. (include area code)

Ph: 432-620-6714

10. Field and Pool, or Exploratory
NASH DRAW

4. Location of Well (Footage, Sec., T., R., M., or Survey Description)

Sec 12 T23S R29E NWSE 2280FSL 1890FEL
32.190709 N Lat, 103.560881 W Lon

11. County or Parish, and State

EDDY COUNTY, NM

12. CHECK APPROPRIATE BOX(ES) TO INDICATE NATURE OF NOTICE, REPORT, OR OTHER DATA

TYPE OF SUBMISSION

TYPE OF ACTION

☒ Notice of Intent☐ Subsequent Report☐ Final Abandonment Notice☐ Acidize☐ Alter Casing☐ Casing Repair☐ Change Plans☐ Convert to Injection☐ Deepen☐ Fracture Treat☐ New Construction☐ Plug and Abandon☐ Plug Back☐ Production (Start/Resume)☐ Reclamation☐ Recomplete☐ Temporarily Abandon☐ Water Disposal☐ Water Shut-Off☐ Well Integrity☒ Other
Change to Original A
PD

13. Describe Proposed or Completed Operation (clearly state all pertinent details, including estimated starting date of any proposed work and approximate duration thereof. If the proposal is to deepen directionally or recompleat horizontally, give subsurface locations and measured and true vertical depths of all pertinent markers and zones. Attach the Bond under which the work will be performed or provide the Bond No. on file with BLM/BIA. Required subsequent reports shall be filed within 30 days following completion of the involved operations. If the operation results in a multiple completion or recompleat in a new interval, a Form 3160-4 shall be filed once testing has been completed. Final Abandonment Notices shall be filed only after all requirements, including reclamation, have been completed, and the operator has determined that the site is ready for final inspection.)

XTO Energy requests a variance from the requirement to use straight hard line as the choke line and instead use a flex hose. Pioneer 33 is outfitted with a Gates E&S flex hose rated to 5,000 psi working pressure (serial # D-060814-1). See attached for test certificate and copy of the pressure test chart.

XTO Energy requests a change to the planned BOP equipment used on this well. The original drilling plan submitted with the APD specified a 5,000 psi working pressure BOP system. We request to change this to a planned 3,000 psi BOP system. Maximum anticipated surface pressure is less than 1,950 psi and none of the offset wells drilled by XTO showed signs of higher pressures at similar depths.

Accepted for record

NMOC

10/6/14

SEE ATTACHED FOR
CONDITIONS OF APPROVALNM OIL CONSERVATION
ARTESIA DISTRICT

JUN 16 2014

RECEIVED

14. I hereby certify that the foregoing is true and correct.

Electronic Submission #248918 verified by the BLM Well Information System

For XTO ENERGY INCORPORATED, sent to the Carlsbad

Committed to AFMSS for processing by CHRISTOPHER WALLS on 06/09/2014 (14CRW0292SE)

Name (Printed/Typed)

STEPHANIE RABADUE

Title

REGULATORY ANALYST

Signature

(Electronic Submission)

Date

06/09/2014

THIS SPACE FOR FEDERAL OR STATE OFFICE USE

Approved By

Chris Walls

Title

Eng

Date

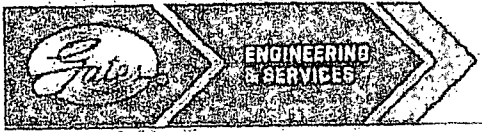
6/16/14

Conditions of approval, if any, are attached. Approval of this notice does not warrant or certify that the applicant holds legal or equitable title to those rights in the subject lease which would entitle the applicant to conduct operations thereon.

Office

CFO

Title 18 U.S.C. Section 1001 and Title 43 U.S.C. Section 1212, make it a crime for any person knowingly and willfully to make to any department or agency of the United States any false, fictitious or fraudulent statements or representations as to any matter within its jurisdiction.



GATES E & S NORTH AMERICA, INC
DU-TEX
134 44TH STREET
CORPUS CHRISTI, TEXAS 78405

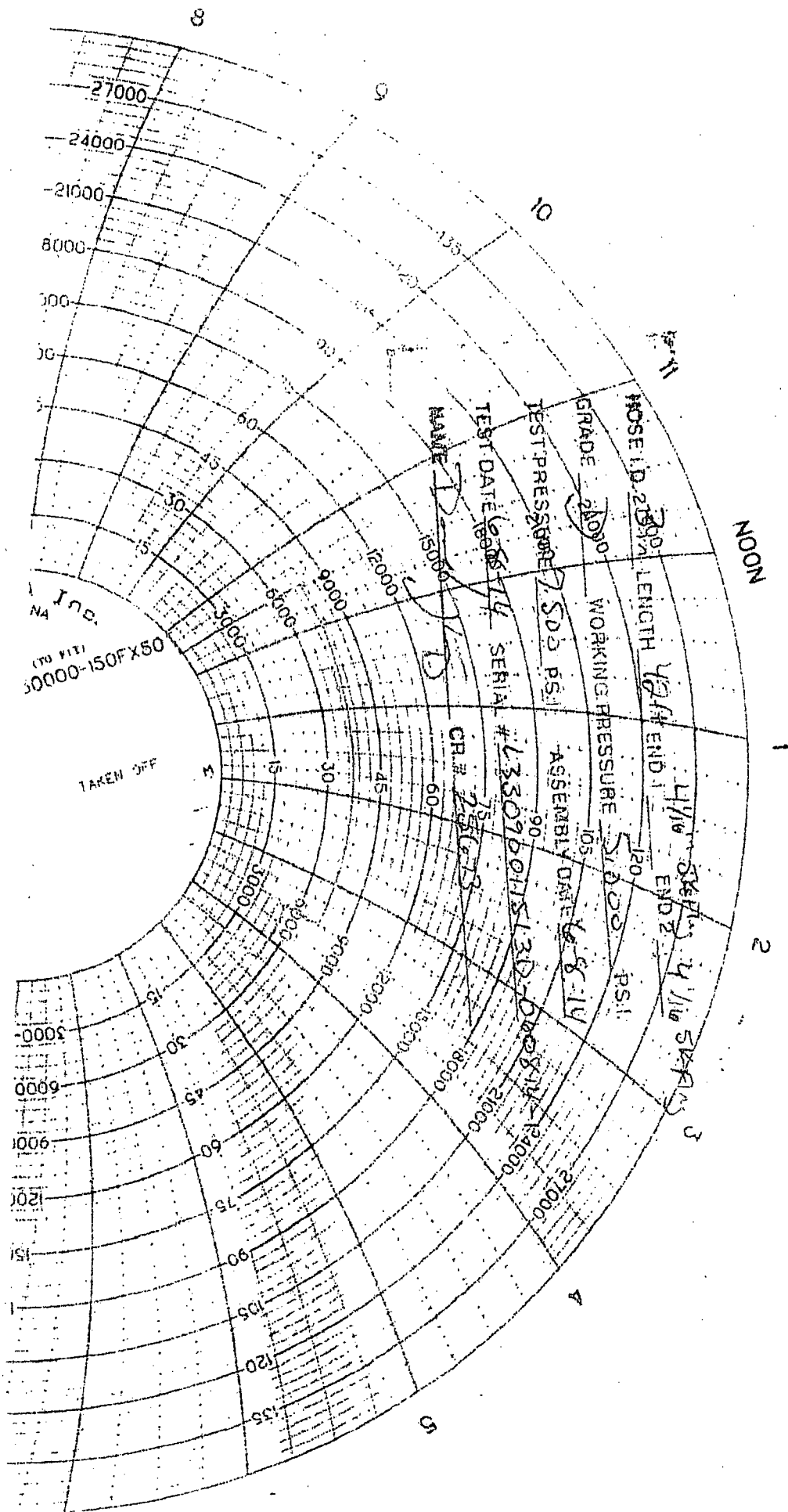
PHONE: 361-887-9807
FAX: 361-887-0812
EMAIL: crpe&s@gates.com
WEB: www.gates.com

GRADE D PRESSURE TEST CERTIFICATE

Customer :	AUSTIN DISTRIBUTING	Test Date:	6/8/2014
Customer Ref. :	PENDING	Hose Serial No.:	D-060814-1
Invoice No. :	201709	Created By:	NORMA
Product Description:	FD3.042.0R41/16.5KFLGE/E LE		
End Fitting 1 :	4 1/16 in.5K FLG	End Fitting 2 :	4 1/16 in.5K FLG
Gates Part No. :	4774-6003	Assembly Code :	L33090011513D-060814-1
Working Pressure :	5,000 PSI	Test Pressure :	7,500 PSI

Gates E & S North America, Inc. certifies that the following hose assembly has been tested to the Gates Oilfield Roughneck Agreement/Specification requirements and passed the 15 minute hydrostatic test per API Spec 7K/Q1, Fifth Edition, June 2010, Test pressure 9.6.7 and per Table 9 to 7,500 psi in accordance with this product number. Hose burst pressure 9.6.7.2 exceeds the minimum of 2.5 times the working pressure per Table 9.

Quality:	QUALITY	Technical Supervisor :	PRODUCTION
Date :	6/8/2014	Date :	6/8/2014
Signature :		Signature :	



NOON

1

2

HOSE ID. 2 1/2" LENGTH 12' END 1 4 1/8" SKIN 3
END 2 4 1/8" SKIN 3

GRADE 2100 WORKING PRESSURE 1200 PSI

TEST PRESSURE 2500 PSI ASSEMBLY DATE 6-8-14

TEST DATE 6-8-14 SERIAL # 1330760115 130-0000 14-14000

NAME D CR # 25613

Inc.
NA
(70 PSI)
50000-150FX50

TAKEN OFF

CONDITIONS OF APPROVAL

OPERATOR'S NAME:	XTO Energy, Inc.
LEASE NO.:	NMNM-0499988
WELL NAME & NO.:	Nash Unit 43H
SURFACE HOLE FOOTAGE:	2280' FSL & 1890' FEL
BOTTOM HOLE FOOTAGE	0330' FNL & 1310' FEL Sec. 01, T. 23 S., R 29 E.
LOCATION:	Section 12, T. 23 S., R 29 E., NMPM
COUNTY:	Eddy County, New Mexico

A. PRESSURE CONTROL

1. All blowout preventer (BOP) and related equipment (BOPE) shall comply with well control requirements as described in Onshore Oil and Gas Order No. 2 and API RP 53 Sec. 17.
2. Variance approved to use flex line from BOP to choke manifold. Check condition of flexible line from BOP to choke manifold, replace if exterior is damaged or if line fails test. Line to be as straight as possible with no hard bends and is to be anchored according to Manufacturer's requirements. The flexible hose can be exchanged with a hose of equal size and equal or greater pressure rating. **Anchor requirements, specification sheet and hydrostatic pressure test certification matching the hose in service, to be onsite for review. These documents shall be posted in the company man's trailer and on the rig floor.** If the BLM inspector questions the straightness of the hose, a BLM engineer will be contacted and will review in the field or via picture supplied by inspector to determine if changes are required (operator shall expect delays if this occurs).
3. Minimum working pressure of the blowout preventer (BOP) and related equipment (BOPE) required for drilling below the surface casing shoe shall be **3000 (3M)** psi.
4. The appropriate BLM office shall be notified a minimum of 4 hours in advance for a representative to witness the tests.
 - a. In potash areas, for all casing strings utilizing slips, these are to be set as soon as the crew and rig are ready and any fallback cement remediation has been done. For all casing strings, casing cut-off and BOP installation can be initiated at twelve hours after bumping the plug. However, **no tests** shall commence until the cement has had a minimum of 24 hours setup time.
 - b. The tests shall be done by an independent service company utilizing a test plug **not a cup or J-packer**. The operator also has the option of utilizing an independent tester to test without a plug (i.e. against the casing) pursuant to Onshore Order 2 with the pressure not to exceed 70% of the burst rating for the casing. Any test against the casing must meet the WOC time for water

basin (18 hours) or potash (24 hours) or 500 pounds compressive strength, whichever is greater, prior to initiating the test (see casing segment as lead cement may be critical item).

- c. The test shall be run on a 5000 psi chart for a 2-3M BOP/BOP, on a 10000 psi chart for a 5M BOP/BOPE and on a 15000 psi chart for a 10M BOP/BOPE. If a linear chart is used, it shall be a one hour chart. A circular chart shall have a maximum 2 hour clock. If a twelve hour or twenty-four hour chart is used, tester shall make a notation that it is run with a two hour clock.
- d. The results of the test shall be reported to the appropriate BLM office.
- e. All tests are required to be recorded on a calibrated test chart. **A copy of the BOP/BOPE test chart and a copy of independent service company test will be submitted to the appropriate BLM office.**
- f. The BOP/BOPE test shall include a low pressure test from 250 to 300 psi. The test will be held for a minimum of 10 minutes if test is done with a test plug and 30 minutes without a test plug. This test shall be performed prior to the test at full stack pressure.

B. DRILL STEM TEST

If drill stem tests are performed, Onshore Order 2.III.D shall be followed.

C. WASTE MATERIAL AND FLUIDS

All waste (i.e. drilling fluids, trash, salts, chemicals, sewage, gray water, etc.) created as a result of drilling operations and completion operations shall be safely contained and disposed of properly at a waste disposal facility. No waste material or fluid shall be disposed of on the well location or surrounding area.

Porto-johns and trash containers will be on-location during fracturing operations or any other crew-intensive operations.

CRW 061014