

UNITED STATES  
DEPARTMENT OF THE INTERIOR  
BUREAU OF LAND MANAGEMENTFORM APPROVED  
OMB NO. 1004-0135  
Expires: July 31, 2010**SUNDRY NOTICES AND REPORTS ON WELLS**  
*Do not use this form for proposals to drill or to re-enter an abandoned well. Use form 3160-3 (APD) for such proposals.*5. Lease Serial No.  
NMLC029389A

6. If Indian, Allottee or Tribe Name

7. If Unit or CA/Agreement, Name and/or No.

**SUBMIT IN TRIPLICATE - Other instructions on reverse side.**

1. Type of Well

☒ Oil Well ☐ Gas Well ☐ Other8. Well Name and No.  
BAISH FEDERAL 122. Name of Operator  
CHEVRON U.S.A. INC.Contact: DENISE PINKERTON  
E-Mail: leakejd@chevron.com9. API Well No.  
30-015-313763a. Address  
15 SMITH ROAD  
MIDLAND, TX 797053b. Phone No. (include area code)  
Ph: 432-687-737510. Field and Pool, or Exploratory  
SHUGART, N

4. Location of Well (Footage, Sec., T., R., M., or Survey Description)

Sec 9 T18S R31E Mer NMP 990FNL 1650FWL

11. County or Parish, and State

EDDY COUNTY, NM

**12. CHECK APPROPRIATE BOX(ES) TO INDICATE NATURE OF NOTICE, REPORT, OR OTHER DATA**

| TYPE OF SUBMISSION                                    | TYPE OF ACTION                                |   |   |   |
|---|---|---|---|---|
| <input type="checkbox"/> Notice of Intent             | <input type="checkbox"/> Acidize              | <input type="checkbox"/> Deepen           | <input type="checkbox"/> Production (Start/Resume)      | <input type="checkbox"/> Water Shut-Off |
| <input checked="" type="checkbox"/> Subsequent Report | <input type="checkbox"/> Alter Casing         | <input type="checkbox"/> Fracture Treat   | <input type="checkbox"/> Reclamation                    | <input type="checkbox"/> Well Integrity |
| <input type="checkbox"/> Final Abandonment Notice     | <input type="checkbox"/> Casing Repair        | <input type="checkbox"/> New Construction | <input type="checkbox"/> Recomplete                     | <input type="checkbox"/> Other          |
|   | <input type="checkbox"/> Change Plans         | <input type="checkbox"/> Plug and Abandon | <input checked="" type="checkbox"/> Temporarily Abandon |   |
|   | <input type="checkbox"/> Convert to Injection | <input type="checkbox"/> Plug Back        | <input type="checkbox"/> Water Disposal                 |   |

13. Describe Proposed or Completed Operation (clearly state all pertinent details, including estimated starting date of any proposed work and approximate duration thereof. If the proposal is to deepen directionally or recompleat horizontally, give subsurface locations and measured and true vertical depths of all pertinent markers and zones. Attach the Bond under which the work will be performed or provide the Bond No. on file with BLM/BIA. Required subsequent reports shall be filed within 30 days following completion of the involved operations. If the operation results in a multiple completion or recompleat in a new interval, a Form 3160-4 shall be filed once testing has been completed. Final Abandonment Notices shall be filed only after all requirements, including reclamation, have been completed, and the operator has determined that the site is ready for final inspection.)

PLEASE FIND ATTACHED, REPORTS FOR WORK DONE FROM 10/07/2013 THROUGH 05/06/2014.

THE INTENT WAS TO WORKOVER THE WELL, BUT PROBLEMS WERE ENCOUNTERED AND VERBAL APPROVAL WAS OBTAINED TO SET A CIBP & CMT. THE INITIAL PRESSURE TEST CHART WAS NEVER SUBMITTED BACK IN 2013, SO CHEVRON RE-TESTED WITH CHART ON 05/06/2014.

THIS REPORT IS TO RESUBMIT THE PRESSURE TEST CHART. JUSTIN HOBBS, CHEVRON EMPLOYEE, SPOKE WITH MR. JIM HUGHES, BLM, ON MAY 15, 2014, EXPLAINED THE SITUATION, AND OBTAINED HIS RECOMMENDATION TO PROCEED WITH THIS LATEST TEST.

CHEVRON IS REQUESTING THE TA STATUS IN ORDER TO HAVE TIME TO EVALUATE THE UP-HOLE FORMATIONS FOR FUTURE WORKOVER OPERATIONS.

**SEE ATTACHED FOR  
CONDITIONS OF APPROVAL****NM OIL CONSERVATION**  
ARTESIA DISTRICT

14. I hereby certify that the foregoing is true and correct.

Electronic Submission #246136 verified by the BLM Well Information Artesia  
For CHEVRON U.S.A. INC., sent to the Carlsbad  
Committed to AFMSS for processing by CATHY QUEEN on 05/28/2014 ()

Accepted for record  
NMOCD  
8/12/14

AUG 11 2014

Name (Printed/Typed) DENISE PINKERTON

Title REGULATORY SPECIALIST

Signature

Date 05/19/2014

RECEIVED

**THIS SPACE FOR FEDERAL OR STATE OFFICE USE**

Approved By

Title

After 8/7/2015 the well must be online  
or plans to P & A must be submitted.

Conditions of approval, if any, are attached. Approval of this notice does not warrant or certify that the applicant holds lawful or equitable title to those rights in the subject lease which would entitle the applicant to conduct operations thereon.

Title 18 U.S.C. Section 1001 and Title 43 U.S.C. Section 1212, make it a crime for any person knowingly and willfully to make to any department or agency of the United States any false, fictitious or fraudulent statements or representations as to any matter within its jurisdiction.

**\*\* OPERATOR-SUBMITTED \*\* OPERATOR-SUBMITTED \*\* OPERATOR-SUBMITTED \*\***

**Additional data for EC transaction #246136 that would not fit on the form**

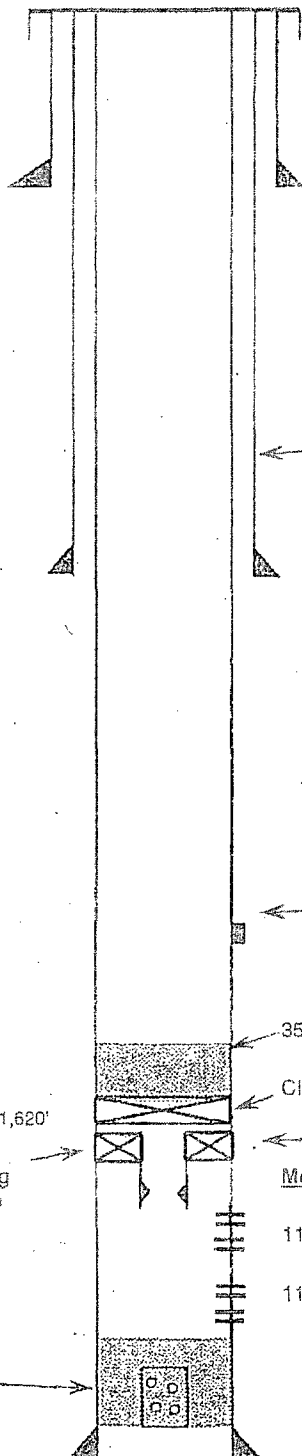
**32. Additional remarks, continued**

THE ORIGINAL CHART AND COPY OF CHART ARE ATTACHED, ALONG WITH THE CURRENT WELLBORE DIAGRAM.

Lease Name: Baish Federal  
 Well No. 12  
 Location: 990' FNL & 1650' FWL  
 Sec.: 9  
 Twn 18 S  
 Rnge 31 E  
 Cost Center

Field: Shugart North  
 Reservoir: Morrow  
 GL: 3,707'  
 KB: 3,725'  
 DF: 3,724'  
 Status: FL

API No.: 30-015-31376  
 REFNO:  
 Spud Date: 11/20/2000  
 Comp. Date: 1/6/2001  
 County: Eddy  
 State: New Mexico



Hole Size: 17.5"  
 Csg. Size: 13-3/8", 48# H-40  
 Set @: 731'  
 Sks. Cmt.:  
 TOC @: Surf  
 Circ: Y/N: Y

TOC @ 4,500'

Calc.  
 TOC @ 4,500'

Hole Size: 12-1/4"  
 Csg. Size: 9-5/8" 40#, N-80  
 Set @: 4,874'  
 Sks. Cmt.:  
 TOC @: Surface  
 Circ: Y/N: Yes

Diagram after plug setting

DV Tool @ 9,015'

35' of cement to 11,582'

CIBP @ 11,617'

Tagged Pkr @ 11,620'  
 10K packer  
 Mandrel looking  
 up - Est. EOTP  
 @ 11,631'

Morrow perms

11,706'-11,718'

11,736'-11,746'

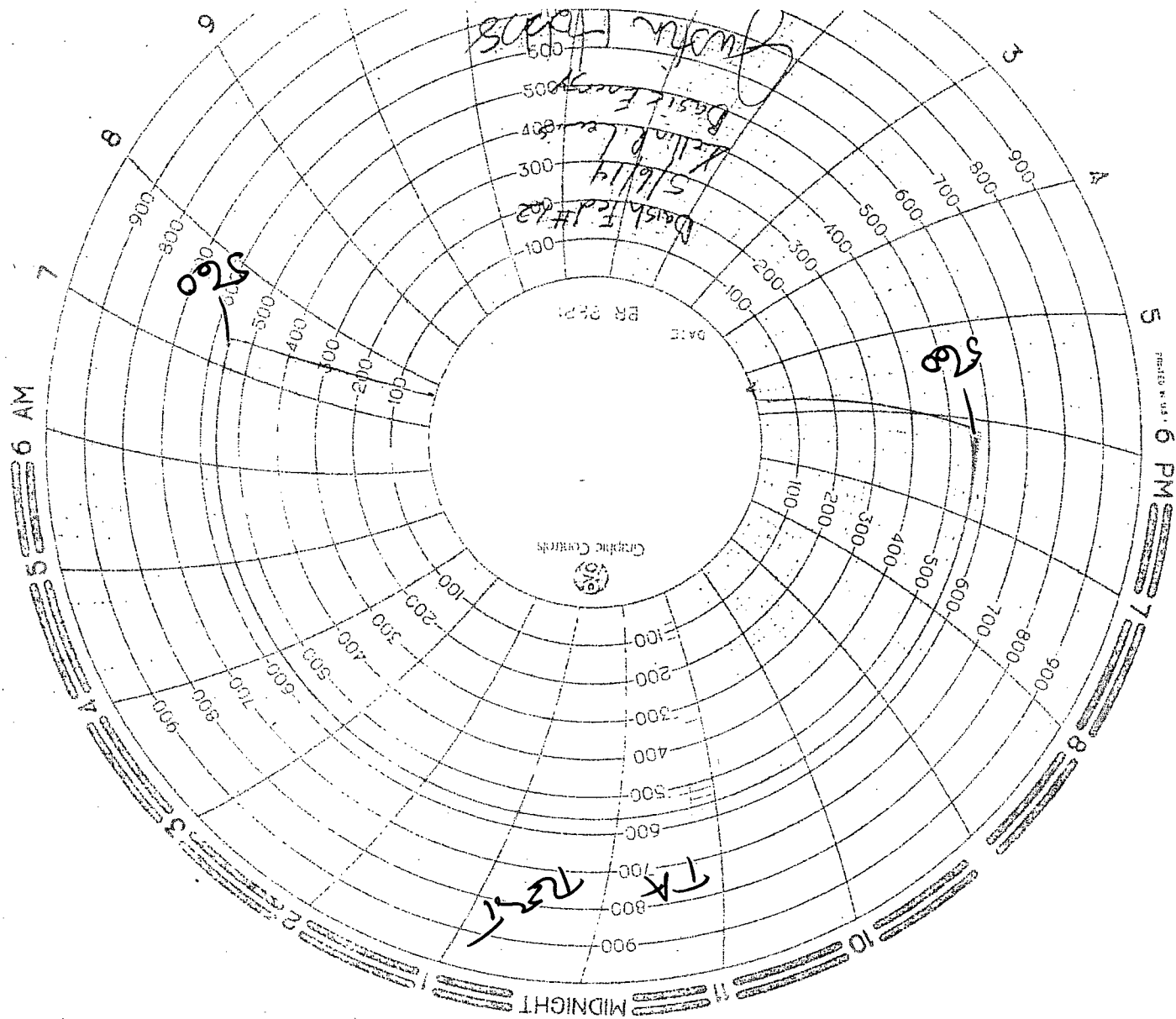
#### Bottom Packer Detail

10K packer w/ mandrel looking up - 1.95" ID  
 10' - 2 3/8" tubing sub  
 1.781" profile nipple  
 10' - 2 3/8" tubing sub  
 Mechanical gun release upper half

Hole Size: 7-7/8"  
 Csg. Size: 5-1/2" 17#, P-110, N-80, J-55  
 Set @: 12,000'  
 Sks. Cmt.: 1710 sx.  
 TOC @: 4500'  
 Circ: Y/N: Y to DV, N to surface

Updated: 7/10/2013

By: KMM



**BUREAU OF LAND MANAGEMENT**  
**Carlsbad Field Office**  
**620 East Greene Street**  
**Carlsbad, New Mexico 88220**  
**575-234-5972**

**Approved for a period of 12 months ending 8/7/2015 subject to conditions of approval. JDB**

**Temporary Abandonment of Wells on Federal Lands**  
**Conditions of Approval**

A temporarily abandoned well is defined as a completion that is not capable of production in paying quantities but which may have value as a service well. Pursuant to 43 CFR 3162.3-4 (c), no well may be temporarily abandoned for more than 30 days without the prior approval of the authorized officer.

Temporary Abandonment (TA) status approval requires a successful mechanical or casing integrity test as follows:

1. A Notice of Intent (NOI) Sundry Notice (Form 3160-5) requesting approval to run a mechanical integrity test (MIT) or casing integrity test (CIT).
2. A description of the temporary abandonment procedure.
  - a. A bridge plug or packer must be installed as close to 50 feet above any open perforations or open hole as possible. If a cement plug is used, the top of the cement must be verified by tagging. CIBP must be capped with minimum 25 sacks cement, placed with tubing, or 35 feet of cement if placed with bailer.
  - b. The wellbore must be filled with corrosion inhibited fluid and pressure tested to 500 psi. The casing shall be capable of holding this pressure for at least 30 minutes. Any leak-off will be evaluated.
  - c. All downhole production/injection equipment (tubing, rods, etc.) shall be removed from the casing if they are not isolated by a packer.
  - d. A bradenhead test must be conducted. If the test indicates a problem exists, a remedial plan and time frame for remediation shall be submitted within ninety (90) days of the test.
  - e. Contact the appropriate BLM office at least 24 hours prior to the scheduled Casing Integrity Test. For wells in Eddy County, 575-361-2822; Lea County 575-393-3612.
3. **Provides justification why the well should be temporarily abandoned rather than permanently plugged and abandoned and an estimated date that the well will be returned to beneficial use or plugged and abandoned. 43 CFR 3162.3-4 (a) The operator shall promptly plug and abandon...wells in which oil or gas is not encountered in paying quantities...**

Wells that successfully pass the casing integrity test **may** be approved for Temporary Abandonment (TA) status provided that the operator:

1. **Submits a subsequent Sundry Notice** (Form 3160-5) requesting TA approval **with well bore diagram** with all perforations and CIBP's and tops of cement on CIBP's.
2. Describes the temporary abandonment procedure.
3. Attaches a clear copy or the original of the pressure test chart.
4. Give justification to allow well to be place in TA status and plan for future use of well with time frame that well will be place back on line or plans to P&A well will be submitted.

If the well does not pass the casing integrity test, then the operator shall within 30 days submit to BLM for approval one of the following:

1. A procedure to repair the casing so that a TA approval can be granted.
2. A procedure to plug and abandon the well.

**Baish Federal #12**

1. Well is approved to be TA/SI for a period of 12 months or until 8/7/2015
2. This will be the last TA approval for this well.
3. Must submit NOI to recomple or NOI to P&A. Must be submitted by 8/7/2015
4. COA's met at this time.



# Summary Report

Major Rig Work Over (MRWO)

Clean-Out

Job Start Date: 10/7/2013

Job End Date: 10/30/2013

|                                     |                               |   |  |                             |  |                                |                  |
|-------------------------------------|-------------------------------|---|--|-----------------------------|--|--------------------------------|------------------|
| Well Name<br>*CHK*BAISH FEDERAL 012 |                               | Lease<br>BAISH FEDERAL                        |  | Field Name<br>SHUGART NORTH |  | Business Unit<br>Mid-Continent |                  |
| Ground Elevation (ft)<br>3,707.00   | Original RKB (ft)<br>3,725.00 | Current RKB Elevation<br>3,732.00, 11/20/2000 |  |                             |  | Mud Line Elevation (ft)        | Water Depth (ft) |

Report Start Date: 10/7/2013

Com

ROAD RIG AND EQUIPMENT

LUNCH BREAK

OFFLOAD TANKS AND EQUIPMENT SPOT PRIMARY UNIT

LEVEL GROUND SET BASE BACK UP RIG RU PRIMARY UNIT

SPOT LD MACHINE RU PIPE RACKS

SECURE WELL AND LOCATION

TRAVEL TO KEY YARD

Report Start Date: 10/8/2013

Com

TRAVEL TO LOCATION

SM JSA DISCUSS SET TANKS RU LINES ND FLOW LINE USE SPOTTER WHEN BACKING DO NOT STEP ON LINES CABLES HOSES OR UNEVEN GROUND SET UP STRIKE ZONE WHEN CONNECTING HARD LINE USE GOOD LIFTING TECHNIQUES STAY CLEAR OF PINCH POINTS BETWEEN TRUCKS AND EQUIPMENT RELEASE TRAPPED PRESSURE STANDING TO THE SIDE

INSPECT SCE CHECK FLUID LEVELS START RIG AND EQUIPMENT SET COFO LIMITS CHECK PRESSURES 50 PSIG SITP BLOW DOWN SEPERATOR AND LINE

SET PUMP AND PIT SPOT TANKS AND EQUIPMENT RU LINES NU FLOW LINE LOAD WATER

CHANGE OUT TOOLS INSTALL BAILS AND ELEVATORS

SM JSA DISCUSS RD FLOOR RU SL LUBRICATOR AND SHEAVES TIH WITH GR AND PLUG RD SL RD FLOOR STAY CLEAR OF PINCH POINTS ON FLOOR PIVOT POINTS STAY TIED OFF WHEN ON FLOOR INSPECT SRL PRIOR TO USE RELEASE TRAPPED PRESSURE STANDING TO THE SIDE USE TAG LINE ON LUBRICATOR KEEP HANDS AND FINGERS CLEAR OF CONNECTIONS USE THREE POINT CONTACT WHEN GOING UP AND DOWN STAIRS MAKE SURE ALL RAILS ARE UP AND PINNED

RU SL TRUCK AND LUBRICATOR RIG UP FLOOR TO SET PLUG TREE 6' OFF GROUND LEVEL

PU 1.81 10 K FSG PLUG AND THE FOLLOWING TOOL STRING: (1) 6" X 1-1/2" ROPE SOCKET WITH 1-3/8" FISH NECK (1) 36" X 1-1/2" STEM 1-3/8" FISH NECK (1) 60' X 1-1/2" STEM WITH 1-3/8" FISH NECK (1) 9" X 1-1/2" KNUCKLE JOINT WITH 1-3/8" FISH OD 42-1/2' X 1-1/2" JARS CLOSED 1-3/8" FISH OD 63" 1-1/2" JARS OPEN WITH 1-3/8" FISH OD AND 18" X 1.81 FSG PLUG WITH 1-3/8" FISH NECK OD

TIH WITH 1.84" GR TO 11,617 WLM TOH TIH WITH 1.81 FSG PLUG ATTEMPT TO SET IN PROFILE NIPPLE @ 11,617' PLUG FELL THROUGH TAGGED @ 11,646' PULL BACK THROUGH TO ABOVE 11,617 WITH SOME DRAG 2ND ATTEMPT TO SET IN PROFILE NIPPLE UNSUCCESSFUL TOH TO 2-3/8" X 2' SUB AT HANGER IN WELL HEAD UNABLE TO PASS CONTACT SUPERVISOR TIH 3RD ATTEMPT TO SET IN PROFILE @ 11,617 UNSUCCESSFUL TOH TO 2-3/8" X 2' SUB BELOW HANGER IN WELL HEAD SHEAR PIN IN PLUG DROP 1.81 X 18' WITH 1-3/8" FISH NECH FSG PLUG DOWN HOLE TIH WITH RETRIEVING TOOL TO 15' BELOW HANGER 2-3/8" X 2' SUB CLEAR RD LUBRICATOR TRUCK AND EQUIPMENT

LOAD AND TEST CASING AND HANGER 500 PSIG HELD OKAY

PUMP 85 BBLs DOWN TUBING TO ATTEMPT TO SEE IF PLUG STILL IN TUBING NO PRESSURE TUBING CLEAR

SECURE WELL AND LOCATION

TRAVEL TO KEY YARD

Report Start Date: 10/9/2013

Com

TRAVEL TO LOCATION

SM JSA DISCUSS RU WHC SET PRV IN HANGER ND TREE NU BOP TEST BOP USE THREE POINT CONTACT WHEN GOING UP AND DOWN STAIRS DO NOT STEP ON LINES CABLES HOSES OR UNEVEN GROUND USE TAG LINES ON LUBRICATOR WH AND BOP INSPECT LIFT EQUIPMENT PRIOR TO USE KNOW WEIGHTS OF LOADS AND LIFT EQUIPMENT RELEASE TRAPPED PRESSURE STANDING TO THE SIDE KEEP HANDS AND FINGERS CLEAR OF FLANGES WELL HEAD AND BOP WRENCHES AND NUTS WATCH TRIP HAZARDS AROUND WELL HEAD WHEN RD FLOOR KEEP HANDS AND FINGERS CLEAR OF PINS AND BRACKET OR HINGE POINTS

INSPECT SCE CHECK FLUID LEVELS START RIG AND EQUIPMENT SET COFO LIMITS BD WELL SITP 150 PSIG SICP 0 PSIG

RU WHC LUBRICATOR WITH BACK PRESSURE VALVE FOR PROFILE NIPPLE

INSTALL 2" BPV IN WELL HEAD PROFILE TESTED OKAY

RD WELL HEAD COMPANY AND RIG FLOOR

ND WELL HEAD STUDS AND NUTS SEVERLY RUSTED LOAD TREE SENT IN FOR REPAIR AND CHANGEOUT TO 2-7/8" CONFIGURATION

NU BOP

RU FLOOR

FUNCTION TEST ACCUMULATOR PRESSURE TEST BOP 250 LOW 500 PSIG HIGH HELD OKAY

WAIT ON EQUIPMENT SCHEDULED NEXT DAY

SECURE WELL AND LOCATION

TRAVEL TO KEY YARD

Report Start Date: 10/10/2013

Com

TRAVEL TO LOCATION



# Summary Report

Major Rig Work Over (MRWO)

Clean-Out

Job Start Date: 10/7/2013

Job End Date: 10/30/2013

|                                     |                               |   |                             |                                |                  |
|-------------------------------------|-------------------------------|---|-----------------------------|--------------------------------|------------------|
| Well Name<br>*CHK*BAISH FEDERAL 012 |                               | Lease<br>BAISH FEDERAL                        | Field Name<br>SHUGART NORTH | Business Unit<br>Mid-Continent |                  |
| Ground Elevation (ft)<br>3,707.00   | Original RKB (ft)<br>3,725.00 | Current RKB Elevation<br>3,732.00, 11/20/2000 |                             | Mud Line Elevation (ft)        | Water Depth (ft) |

Com  
SM JSA DISCUSS RU SL SET PLUG PERFORATE TUBING RU SWAB LUBRICATOR SWAB WELL USE SPOTTER WHEN BACKING UP TRUCKS TO WELL HEAD DO NOT STEP ON LINES CABLES HOSES OR UNEVEN GROUND USE THREE POINT CONTACT WHEN GOING UP AND DOWN STAIRS KEEP HAND RAILS PINNED IN PLACE USE TAG LINE ON LUBRICATOR STAY CLEAR OF SUSPENDED LOADS KEEP HANDS AND FINGERS CLEAR OF WIRE DRUM AND SET UP STRIKE ZONE BETWEEN WELL HEAD AND SL TRUCK USE GOOD COMMUNICATION WHEN OPEN VALVES BLEED TRAPPED PRESSURE STANDING TO THE SIDE

INSPECT SCE CHECK FLUID LEVELS START RIG AND EQUIPMENT SET COFO LIMITS CHECK WELL BORE PRESSURES 0 PSIG SICP 150 PSIG SITP LEAVE PRESSURE IN TUBING FOR SL PLUG

RU SL TRUCK AND EQUIPMENT ADJUST FLOOR AND LADDER POSITION TO RU SL OPERATION RU LUBRICATOR AND SL PULLEYS

TIH WITH THE FOLLOWING TOOL STRING (3) 1-1/4" X 5' SINKER BARS WITH 1-3/16" FISH NECK (1) 1-1/4" X 5' SPANG JARS WITH 1-3/16" FISH NECK ==RUN #1 TIH WITH TS AND 2.31" GR TO 11,612' TOH == RUN#2 TIH WITH (1) 2.50 X 8" COLLAR STOP PART # 3400-250-3 WITH 1-3/4" FISH NECK SET @ 11,582' SET AND (1) G-PACK OFF 2.50" X 24" SET @ 11,580' WITH INTERNAL 1.875" FISH NECK PART # 13B01427 ATTEMPT TO PRESSURE UP TUBING TO 700 TO RATCHET SLIPS IN PLACE PUMP 54 BBLs 4% KCL WOULD NOT PRESSURE UP ATTEMPT TO RE-SET G-PACK-OFF WITH WL FREE AND FELL THROUGH TO 11,612' WORKED TS AND PLUG BACK UP HOLE PULLED 12-14K ON WIRE TO RETRIEVE TOH== CS PLUG AND TOOL STRING INTACT EXCEPT FOR PACKING ON G-PACK-OFF

PRESSURE TEST ANNULUS 250 LOW 500 PSIG HIGH HELD OKAY

WAIT ON REPLACEMENT PACKING

RUN #3 TIH WITH TS 2-1/2" X 8" COLLAR STOP PART # 3400-250-03 WITH 1-3/4" FISH NECK AND 2-1/2" X 24" G PACK OFF PLUG WITH 1.875" INTERNAL FISH NECK SET CS @ 11,234' AND G-PACK-OFF 11,233' PRESSURE UP TUBING WITH 34 BBLs TO 900 PSIG WEIGHT ON PLUG ATTEMPT TO RATCHET IN PLACE PLUG AND COLLAR STOP FELL DOWN HOLE TOH DID NOT RETRIEVE PLUG TIH TO 11250' LATCH ON PLUG COULD NOT UNLATCH OR SHEAR OFF SHUT IN BOP ON LUBRICATOR

SECURE WELL AND LOCATION

TRAVEL TO KEY YARD

Report Start Date: 10/11/2013

Com  
SM JSA DISCUSS BD WELL TOH WITH PLUG RD SL UNIT AND EQUIPMENT USE THREE POINT CONTACT WHEN GOING UP AND DOWN STAIRS DO NOT STEP ON LINES CABLES HOSES OR UNEVEN GROUND STAY CLEAR OF SUSPENDED LOADS AND MOVING EQUIPMENT SUCH AS PULLEYS SHEAVES AND WIRE RELEASE TRAPPED PRESSURE STANDING TO THE SIDE

BLOW DOWN WELL SITP 90 PSIG RELEASE G-PACKOFF FROM 11,233' TOH LD TOOLSTRING G-PACKOFF AND COLLARS STOP

SM JSA DISCUSS RELEASE PACKER AND TOH STANDING BACK TUBING USE THREE POINT CONTACT WHEN GOING UP AND DOWN STAIRS INSPECT SCE AND ELEVATORS PRIOR TO USE KNOW WEIGHTS OF LOADS MAINTAIN GOOD HOUSE KEEPING AND MONITOR WEIGHT INDICATOR TO PREVENT OVERPULL

INSPECT SCE CHECK FLUID LEVELS START RIG AND EQUIPMENT REPOSITION STAIRS

RELEASE TUBING FROM ON/OFF TOOL EQUALIZE PRESSURE ACROSS PACKER

LATCH ON AND RELEASE PACKER FROM SET POSITION IN 5-1/2" CASING @ 11,589'

PUMP 30 BBLs 4% KCL DOWN TUBING

COMPLETE FIRE BOP AND SPILL DRILLS

TOH STANDING BACK AND TALLY TUBING

LUNCH BREAK

TOH STANDING BACK AND TALLY TUBING TOTAL DEPTH EOT 11,605' BOTTOM OF TUBING UNABLE TO USE FOR PRODUCTION CONNECTION EGG SHAPED

SM JSA DISCUSS PU FISHING BHA STAY CLEAR OF SUSPENDED LOADS KEEP HANDS AND FINGERS CLEAR OF DRILL COLLARS AND RACK OR LIFTING EQUIPMENT USE TAG LINES ON FISHING BHA USE CLAMP AND KEEP HANDS AND FINGERS CLEAR OF WRENCHES CLAMP AND BETWEEN RIG FLOOR AND CLAMP

PU FISHING BHA TO INCLUDE THE FOLLOWING: (1) 4-3/4" X 5.95' SHOE 4-3/4" OD X 3-3/4" ID SOD X MID SHOE (1) TOP BUSHING 3-3/8" OD X 1-1/2" ID X 1.60' IN LENGTH (1) SET OF JARS 3-3/4" OD X 12.96' IN LENGTH (6) DC1 DRILL COLLARS 3-3/8" OD X 1-1/2" ID TOTAL LENGTH 181.95' 26# PER FOOT (1) TOP SUB 3-1/2" OD X 1-1/2" ID X 1.53' (4) 2-7/8" EUE 8RD 6.5# L-80 TUBING 124' TUBING WAS STARTING TO EGG SHAPED

TIH WITH CO BHA DRILL COLLARS AND TUBING EOT 305'

SECURE WELL AND LOCATION

TRAVEL TO KEY YARD

Report Start Date: 10/14/2013

Com  
TRAVEL TO LOCATION

SM JSA DISCUSS EMERGRNCY EVACUATION PROCEDURE BD WELL TIH/TOH LD TUBING USE THREE POINT CONTACT WHEN GOING UP AND DOWN STAIRS DO NOT STEP ON LINES CABLES HOSES OR UNEVEN GROUND INSPECT SCE PRIOR TO USE STAY CLEAR OF SUSPENDED LOADS INSPECT LIFT EQUIPMENT AND SRL PRIOR TO USE STAY 100 % TIED OFF WHEN IN DERRICK KEEP HANDS AND FINGERS CLEAR OF MOVING EQUIPMENT SUCH AS SLIPS TONGS ELEVATORS AND PIPE AND RAILING

INSPECT SCE CHECK FLUID LEVELS START RIG AND EQUIPMENT SET COFO LIMITS CHECK WELL BORE PRESSURE SICP 200 PSIG SITP 200 PSIG

BLOW DOWN WELL KILL 40 BBLs 4% KCL

TOH WITH KILL STRING STAND BACK DRILL COLLARS LD JARS AND SHOE



# Summary Report

Major Rig Work Over (MRWO)

Clean-Out

Job Start Date: 10/7/2013

Job End Date: 10/30/2013

|                                     |                               |   |                             |                                |                  |
|-------------------------------------|-------------------------------|---|-----------------------------|--------------------------------|------------------|
| Well Name<br>*CHK*BAISH FEDERAL 012 |                               | Lease<br>BAISH FEDERAL                        | Field Name<br>SHUGART NORTH | Business Unit<br>Mid-Continent |                  |
| Ground Elevation (ft)<br>3,707.00   | Original RKB (ft)<br>3,725.00 | Current RKB Elevation<br>3,732.00, 11/20/2000 |                             | Mud Line Elevation (ft)        | Water Depth (ft) |

Com

TIH TO 4000'

LD BAD PRODUCTION TUBING

PU FISH AND MILLING BHA TO INCLUDE: (1) 4-3/4' SOD X MID SHOE 4-1/2" OD X 3-3/4" ID X 5.95' LENGTH (1) TOP BUSHING 3-3/8" OD X 1-1/2" ID X 1.60' LENGTH (1) SET OF JARS 3-3/4" OD 1-1/2" ID X 12.96' IN LENGTH (1) DC1 3-3/8" OD X 1-1/2" ID X 30.65' (1) DC2 3-3/16" OD X 1-2/2" ID X 30.02' (1) DC3 3-1/2" OD X 1-1/2" ID X 30.70' (1) DC4 3-3/8" OD X 1-1/2" ID X 29.81' (1) DC5 3-3/8" OD X 1-1/2" ID X 30.59' (1) DC6 3-1/2" OD X 1-1/2" ID X 30.18' (1) TOP SUB 3-1/2" OD X 1-1/2" ID X 1.53'

TIH TO 6800'

MOVE BAD PRODUCTION FROM RACK REPLACE WITH L-80 WS TALLY WS

SECURE WELL AND LOCATION

TRAVEL TO KEY YARD

Report Start Date: 10/15/2013

Com

TRAVEL TO LOCATION

SM JSA DISCUSS INSPECT SCE CHECK PRESSURES BD WELL INSTALL STRIPPING HEAD RU AIRFOAM UNIT CIRCULATE WELL TIH USE THREE POINT CONTACT WHEN GOING UP AND DOWN STAIRS DO NOT STEP ON LINES CABLES HOSES OR UNEVEN GROUND INSPECT SCE PRV AND SRL PRIOR TO USE SET UP STRIKE ZONES FOR PRESSURIZED LINES USE ONE PERSON ON MANIFOLD MONITOR PRESSURES USE GOOD COMMUNICATION ON CONNECTIONS WEAR HEARING PROTECTION NEAR AIR UNIT KEEP HANDS AND FINGERS CLEAR OF MOVING EQUIPMENT SUCH AS SLIPS TONGS ELEVATORS AND PIPE AND RAILING REVIEW EVACUATION PROCEDURE

INSPECT SCE CHECK FLUID LEVELS START RIG AND EQUIPMENT SET COFO LIMITS CHECK WELL HEAD PRESSURES 200 SICP BD WELL

INSTALL STRIPPING HEAD TALLY WS TUBING

RU AIR FOAM UNIT ESTABLISH CIRCULATION 900 SCFM 40 BPH WATER 2 GALLON PER 20 BLS FOAMER AND INHIBITOR OPERATING PRESSURE 500 PSIG TUBING 60 PSIG CASING

TIH TO 9000'

UNLOAD WELL CIRCULATING PRESSURE 650 PSIG 40 BHP WATER 2 GPH FOAMER 900 SCFM NO SIGN OF FLUID LEVEL UNABLE TO LOAD UNIT

PU REMAINDER OF L-80 WS TO TAG FISH TOP @ 11,647'

SECURE WELL AND LOCATION

TRAVEL TO KEY YARD

Report Start Date: 10/16/2013

Com

TRAVEL TO LOCATION

SM JSA DISCUSS EMERGENCY EVACUATION PROCEDURE RU PS CIRCULATE TIH MILL SLIPS USE THREE POINT CONTACT WHEN GOING UP AND DOWN STAIRS DO NOT TSEP ON LINES CABLES HOSES OR UNEVEN GROUND USE TAG LINE ON POWER SWIVAL KEEP HANDS AND FINGERS CLEAR OF CLAMPS AND CABLES STAY OFF RIG FLOOR WHILE PS IS ROTATING NO LOOSE CLOTHES USE GOOD COMMUNICATION ON MANIFOLD MONITOR PRESSURE GUAGES RELEASE TRAPPED PRESSURE STANDING TO THE SIDE INSPECT SCE PRV AND LIFT EQUIPMENT PRIOR TO USE

INSPECT SCE CHECK FLUID LEVELS ENGUAGE RIG SET COFO LIMITS CHECK WELL BORE PRESSURES SICP 200 PSIG SITP 0 PSIG

RU POWER SWIVEL

RU AIR UNIT PUMP 5 GALLONS FOAMER AND WATER DOWN TUBING ENGUAGE AIR UNIT INITIAL CIRCULATING PRESSURES 700 PSIG TUBING 300 PSIG CASING WITH 17 GPM WATER AND 5 GPM FOAMER VOLUMES TIH WITH TUBING SET ON THE TOP OF THE FISH WITH NO INCREASE IN CIRCULATING PRESSURE UNABLE TO ESTABLISH CIRCULATION CONTACT ENGINEER ADDITIONAL AIR FOAM UNIT NEEDED

LOAD WATER

RD POWER SWIVAL

TRAVEL TO KEY YARD

Report Start Date: 10/17/2013

Com

TRAVEL TO LOCATION

SM JSA DISCUSS: RU PS AND AIR UNITS/ CIRCULATE/ MILL FISH/ USE THREE POINT CONTACT WHEN GOING UP AND DOWN STAIRS DO NOT STEP ON LINES CABLES HOSES OR UNEVEN GROUND INSPECT SCE PRIOR TO USE STAY CLEAR OF SUSPENDED LOADS SET UP STRIKE ZONE FOR PRESSURIZED LINES USE GOOD COMMUNICATION ON MANIFOLD STAY OF RIG FLOOR WHEN PS IS TURNING NO LOOSE CLOTHING AROUND ROTATING EQUIPMENT

INSPECT SCE CHECK FLUID LEVELS START RIG AND EQUIPMENT SET COFO LIMITS CHECK WELL BORE PRESSURES 200 PSIG SICP 0 PSIG SITP BD WELL

RU 2ND 900 SCFM AIR UNIT

ESTABLISH A CIRCULATION RATE OF 40 GPM WATER 5 GPM FOAMER 1800 SCFM AIR @ 1500 PSIG TUBING PRESSURE 200 PSIG CASING PRESSURE FROM 11,630'

TIH TAG FISH TOP @ 11,647' MILL TO 11,648.5' CIRCULATE WELL CLEAN TOTAL BBLS PUMPED 240 FLOWED BACK 170 BBLS

PUMP DOWN TUBING 35 BBLS 750 PSIG

TOH TO 6030' KILL WELL 40 BBLS DOWN CASING RIG ENGINE SPUTTERING UNDER LOAD

SECURE WELL AND LOCATION





# Summary Report

Major Rig Work Over (MRWO)

Clean-Out

Job Start Date: 10/7/2013

Job End Date: 10/30/2013

|                                     |                               |   |                             |                                |                  |
|-------------------------------------|-------------------------------|---|-----------------------------|--------------------------------|------------------|
| Well Name<br>*CHK*BAISH FEDERAL 012 |                               | Lease<br>BAISH FEDERAL                        | Field Name<br>SHUGART NORTH | Business Unit<br>Mid-Continent |                  |
| Ground Elevation (ft)<br>3,707.00   | Original RKB (ft)<br>3,725.00 | Current RKB Elevation<br>3,732.00, 11/20/2000 |                             | Mud Line Elevation (ft)        | Water Depth (ft) |

Com

TRAVEL TO KEY YARD

Report Start Date: 10/18/2013

Com

RIG REPAIR / RIG ENGINE SPUTTERING

Report Start Date: 10/19/2013

Com

TRAVEL TO LOCATION

SM JSA DISCUSS REPAIR RIG ENGINE BD WELL TOH/LD BHATIH WITH KILL STRING WATCH FOR PINCH POINTS BETWEEN BOLTS AND WRENCH'S USE SECONDARY CONTAINMENT FOR ENGINE FLUIDS USE THREE POINT CONTACT WHEN GOING UP AND DOWN STAIRS DO NOT STEP ON LINES CABLES HOSES OR UNEVEN GROUND KEEP HANDS AND FINGERS CLEAR OF MOVING EQUIPMENT SUCH AS TONGS ELEVATORS SLIPS PIPE AND RAILING WHEN LD CO BHA USE TAG LINE AND CLAMPS KEEP HANDS AND FINGERS CLEAR OF CLAMP AND SLIPS OR WRENCHS AND CLAMP BOLTS STAY CLEAR OF SUSPENDED LOADS INSPECT LIFT EQUIPMENT AND SRL PRIOR TO USE STAY 100% TIED OFF WHEN IN DERRICK

INSPECT SCE CHECK WELL BORE PRESSURES BD WELL SPOT RIG ENGINE MECHANIC TRUCK

REPAIR INJECTOR #5 ON ENGINE

TOH FROM 5070' WITH 2-7/8" EUE 8RD 6.5# L-80 TUBING DRILL COLLARS JARS AND BHA

LD BHA CUTRITE ON 4-3/4" SHOE EXPIRED NO INDICATION OF INTERNAL WEAR OR SCRAP MARKS FROM SS CAPILLARY TUBE

TIH WITH 2-7/8" EUE 8RD 6.5# L-80 KILL STRING TO 1280'

SECURE WELL AND LOCATION

TRAVEL TO KEY YARD

Report Start Date: 10/21/2013

Com

TRAVEL TO LOCATION

SM JSA DISCUSS INSPECT SCE CHECK PRESSURES TOH/TH UNLOAD WELL RU PS USE THREE POINT CONTACT WHEN GOING UP AND DOWN SATIRS DO NOT STEP ON LINES CABLES HOSE OR UNEVEN GROUND KEEP HANDS AND FINGERS CLEAR OF MOVING EQUIPMENT SUCH AS POWER SWIVEL TONGS ELEVATORS SLIPS PIPE AND RAILING INSPECT SCE PRIOR TO USE USE TAG LINE ON JARS AND CO BHA USE SAFETY CLAMP ON DRILL COLLARS INSPECT SRL PRIOR TO GETTING IN DERRICK AND STAY 100% TIED OFF INSPECT PRV AND SET PRESSURE PRIOR TO USING AIR UNIT MONITOR CASING AND TUBING PRESSURES STAY UP WIND WHEN UNLOADING THE WELL INSTALL STRIPPING RUBBER

INSPECT SCE DRILL LINE AND CHECK FLUID LEVELS ENGAUGE RIG SET COFO LIMITS CHECK WELL BORE PRESSURES 0 PSIG SITP AND 0 PSIG SICP REMOVE SITE SECURITY OPEN PIPE RAMS

TOH FROM 1280'

PU BHA TO INCLUDE THE FOLLOWING: (1) 4-3/4" SHOE WITH CARBIDE CUTRITE DIAMOND TAB INSERT 1' AND 2' WITH WIRE BETWEEN TABS INSERTS 4-1/2" OD X 5-95" IN LENGTH (1) TOP BUSHING 3-3/8" OD X 1-1/2" ID X 1.60' LONG (1) SET JARS 3/3/4" OD X 12.96' LONG (1) DC1 3-3/8" OD X 1-1/2" ID X 30.65' (1) DC2 3-3/16" OD X 1-1/2" ID X 31.02' LONG (1) DC3 3-1/2" OD X 1-1/2" ID X 30.70' LONG (1) DC4 3-3/8" OD X 1-1/2" ID X 29.81' LONG (1) DC5 3-3/8" OD X 1-1/2" ID X 30.50' LONG (1) DC6 3-1/2" OD X 1-1/2" ID X 30.18 LONG (1) TOP SUB 3-1/2" PD X 1-1/2" ID X 1.53' LONG

TIH TO 6000'

INSTALL STRIPPING HEAD WITH 2-7/8" RUBBER

UNLOAD WELL WITH AIR FOAM UNITS AT THE FOLLOWING RATE: 1800 SCFM 40 GPM 5GPM FOAMER WATER 1000 PSIG TUBING PRESSURE 200 PSIG CASING PRESSURE

TIH TO 6600' STRIPPING RUBBER LEAKING WELL UNLOADING CLOSE PIPE RAMS

KILL WELL PUMP 150 BBLs DOWN TUBING SHUT IN CASING LET BUILD UP TO 185 PSIG EOT 6600' ABOVE FLUID LEVEL GET OVERBALANCE BLOW DOWN WELL SLOWLY

TIH 11,617

CHANGEOUT 2-7/8" STRIPPING RUBBER

SECURE WELL AND LOCATION

TRAVEL TO KEY YARD

Report Start Date: 10/22/2013

Com

TRAVEL TO LOCATION

SM JSA DISCUSS RU PS UNLOAD WELL MILL SLIPS AND CO TIH USE THREE POINT CONTACT WHEN GOING UP AND DOWN STAIRS DO NOT STEP ON LINES CABLES HOSES OR UNEVEN GROIND USE TAG LINE ON RS STAY CLEAR OF PINCH POINT BETWEEN PS AND RIG FLOOR KNOW WEIGHTS OF LOADS INSPECT LIFT EQUIPMENT PRIOR TO USE SET UP STRIKE ZONE FOR AIR FOAM DISCHARGE LINE AND WEAR HEARING PROTECTION WHEN UNITS ARE IN OPERATION USE GOOD COMMUNICATION ON MANIFOLD DO NOT BREAK CONNECTIONS UNTILL PRESSURE IS BLOWN DOWN

INSPECT SCE CHECK FLUID LEVELS ENGAUGE RIG SET COFO LIMITS INSPECT DRILL LINE CHECK WELL BORE PRESSURES 100 PSIG SICP 0 PSIG SITP REMOVE NIGHT SECURITY

RU-POWER SWIVAL



# Summary Report

Major Rig Work Over (MRWO)

Clean-Out

Job Start Date: 10/7/2013

Job End Date: 10/30/2013

|                                     |                               |   |  |                             |  |                                |                  |
|-------------------------------------|-------------------------------|---|--|-----------------------------|--|--------------------------------|------------------|
| Well Name<br>*CHK*BAISH FEDERAL 012 |                               | Lease<br>BAISH FEDERAL                        |  | Field Name<br>SHUGART NORTH |  | Business Unit<br>Mid-Continent |                  |
| Ground Elevation (ft)<br>3,707.00   | Original RKB (ft)<br>3,725.00 | Current RKB Elevation<br>3,732.00, 11/20/2000 |  |                             |  | Mud Line Elevation (ft)        | Water Depth (ft) |

|   |  |
|---|--|
| Com   |  |
| UNLOAD WELL INITIAL UNLOAD VOLUME AND PRESSURE 1800 SCFM 40 GPM WATER 5 GPM FOAMER 1800 PSI TUBING PRESSURE CASING UNLOADED THROUGH SINGLE OPEN 3/4" CHOKE ON MANOFILED @ 800 PSIG PIPE RAMS WERE CLOSED BELOW STRIPPING RUBBER FINAL OPERATING VOLUMES AND PRESSURES FOR MILLING OPERATIONS 900 SCFM 42 BPM WATER 5 GPM FOAMER 750 PSIG TUBING PRESSURE 250 PSIG CASING PRESSURE 5 BBLs SWEEP 900 PSIG TUBING PRESSURE 320 PSIG CASING PRESSURE  |  |
| MILL WITH 4-3/4" SHOE TO 11,650' WITH 1500 PSIG HYDRAULIC PRESSURE ON POWER SWIVEL 7 POINTS ON MILL   |  |
| CIRCULATE WELL CLEAN KILL TUBING PUMP 40 BBLs @ 750 PSIG TUBING PRESSURE  |  |
| RD POWER SWIVEL BD WELL 100 PSIG FLOWBACK PRESSURE FULLY OPEN MANIFOLD  |  |
| TOH TO 10,200' STRIPPING RUBBER LEAKING SI PIPE RAMS  |  |
| 180 BBLs 4% KCL DOWN TUBING 4 BPM RATE 700 PSIG TUBING PRESSURE 500 PSIG FLOW BACK MANIFOLD PRESSURE UNLOAD WATER INTO FRAC TANK  |  |
| SECURE WELL AND LOCATION  |  |
| TRAVEL TO KEY YARD  |  |
| Report Start Date: 10/23/2013   |  |
| Com   |  |
| TRAVEL TO LOCATION  |  |
| SM JSA DISCUSS TOH LD CO AND FISHING BHA PU TOOLS TIH USE THREE POINT CONTACT WHEN GOING UP AND DOWN STAIRS DO NOT STEP ON LINES CABLES HOSES OR UNEVEN GROUND KEEP HANDS AND FINGERS CLEAR OF MOVING EQUIPMENT SUCH AS TONGS ELEVATORS SLIPS AND PIPE AND RAILING INSPECT SRL AND SCE PRIOR TO USE STAY 100% TIED OFF WHEN IN DERRICK STAY CLEAR OF SUSPENDED LOADS USE TAG LINE ON FISHING TOOLS BLEED OFF TRAPPED PRESSURE STANDING TO THE SIDE USE GOOD HOUSE KEEPING AND MONITOR WIND DIRECTION WHEN BLOWING DOWN WELL   |  |
| INSPECT SCE AND TUBING LINE CHECK FLUID LEVELS ENGAGE RIG SET COFO LIMITS CHECK WELL BORE PRESSURES 0 SICP AND 0 SITP REMOVE STRIPPING HEAD CHANGE OUT VALVE ON FLOWBACK MANIFOLD   |  |
| TOH FROM 10,200'  |  |
| LD FISHING BHA WITH 4-3/4" WASH OVER SHOE MILL HAD NO INTERNAL SCARING CUTRITE WAS WORN .125 FROM OUTSIDE 4.625" FISH TOP NO TRASH IN WIRE OR INTERNAL DIAMOND INSERTS  |  |
| PU NEW SPEAR BHA TO INCLUDE: (1) SPEAR 3-1/8" OD X 4.70' LONG (1) 3-1/2" OD X 1-1/2" ID X 1.13' DRAIN SUB WITH TWO 3/8" PORTS (1) 3-3/4" OD X 1-1/2" ID CROSSOVER SUB 2-3/8" EUE 8RD REG X 2-7/8" EUE 8RD REG X 1.26' IN LENGTH (1) CROSSOVER SUB 3-3/4" OD X 1-1/2" ID X .71' LONG 2-7/8" REG X 2-7/8" IF (1) BUMBER SUB 3-3/4" OD X 1-1/2" ID X 12.96' (1) SET OF JARS 3-3/4" OD X 1-1/2" ID X 30.65' LONG (1) DC1 3-3/8" OD X 1-1/2" ID X 30.65' (1) DC2 3-3/16" OD X 1-1/2" ID X 30.02' LONG (1) DC3 3-3/8" OD X 1-1/2" ID X 29.81' (1) DC4 3-3/8" X 1-1/2" X 29.81' LONG (1) DC5 3-1/2" OD X 1-1/2" ID X 30.59' LONG (1) DC6 3-1/2" OD X 1-1/2" ID X 31.18 LONG (1) TOP SUB 3-1/2" OD X 1-1/2" ID X 1.53' LONG (1) ACCELERATOR 3-3/4" OD X 1-1/2" ID X 11.96' LONG TOTAL BHA LENGTH 220.83 |  |
| TIH TO 11,649' ENGAGE FISH TOP  |  |
| LATCH ON FISH PULL 20 K OVER PULL OFF MAKE SEVERAL ATTEMPTS ALSO DROPPING INTO FISH IN 2' JARRING INTERVALS WITH SAME RESULT SLIPPING OFF PROGRESSIVLY LOOSER FIT   |  |
| LD (1) JOINT SECURE WELL AND LOCATION   |  |
| TRAVEL TO KEY YARD  |  |
| Report Start Date: 10/24/2013   |  |
| Com   |  |
| TRAVEL TO LOCATION  |  |
| SM JSA DISCUSS KILL WELL TOH LD FISHING BHA USE THREE POINT CONTACT WHEN GOING UP AND DOWN STAIRS DO NOT STEP ON LINES CABLES HOSES OR UNEVEN GROUND INSPECT SCE PRIOR TO USE KEEP HANDS AND FINGERS CLEAR OF MOVING EQUIPMENT SUCH AS TONGS ELEVATORS OR PIPE AND RAILING STAY CLEAR OF SUSPENDED LOADS USE CLAMP ON DRILL COLLARS AND TIGHTEN LIFT SUBS PRIOR TO STANDING IN DERRICK USE TAG LINE ON BHA  |  |
| INSPECT SCE CHECK FLUID LEVELS ENGAGE RIG SET COFO LIMITS BD WELL SICP 0 PSIG SITP 0 PSIG REMOVE NIGHT SECURITY OPEN BOP  |  |
| TOH 2 STANDS SHUT IN WELL   |  |
| OPERATIONS TEMPORARILY SUSPENDED DUE TO SSE EMPLOYEE PLACED IN DERRICK WITH NO TRAINING BY OPERATOR NOT APPROVED BY TOOLPUSHER OR WSM   |  |
| TO FROM 11,617'   |  |
| LD BHA SPEAR DAMAGED BENT BUT OVERSHOT IN TACT  |  |
| TIH WITH KILL STRING TO 1280'   |  |
| SECURE WELL AND LOCATION  |  |
| TRAVEL TO KEY YARD  |  |
| Report Start Date: 10/25/2013   |  |
| Com   |  |
| TRAVEL TO LOCATION  |  |
| SM JSA DISCUSS CHECK SCE BD WELL TOH WITH KILL STRING PU IMP BLOCK TIH USE THREE POINT CONTACT WHEN GOING UP AND DOWN STAIRS DO NOT STEP ON LINES CABLES HOSES OR UNEVEN GROUND STAY CLEAR OF SUSPENDED LOADS INSPECT SCE AND SRL PRIOR TO USE STAY 100% TIED OFF WHEN IN DERRICK KEEP HANDS AND FINGERS CLEAR OF MOVING EQUIPMENT SUCH TONGS ELEVATORS SLIPS AND PIPE AND RAILING RELEASE TRAPPED PRESSURE STANDING TO THE SIDE USE TAG LINE WHEN PU TOOLS   |  |



# Summary Report

Major Rig Work Over (MRWO)

Clean-Out

Job Start Date: 10/7/2013

Job End Date: 10/30/2013

|                                     |                               |   |                             |                                |                  |
|-------------------------------------|-------------------------------|---|-----------------------------|--------------------------------|------------------|
| Well Name<br>*CHK*BAISH FEDERAL 012 |                               | Lease<br>BAISH FEDERAL                        | Field Name<br>SHUGART NORTH | Business Unit<br>Mid-Continent |                  |
| Ground Elevation (ft)<br>3,707.00   | Original RKB (ft)<br>3,725.00 | Current RKB Elevation<br>3,732.00, 11/20/2000 |                             | Mud Line Elevation (ft)        | Water Depth (ft) |

Com

INSPECT SCE CHECK FLUID LEVELS ENGAGE RIG SET COFO LIMITS CHECK WELL BORE PRESSURE 100 PSIG SICP 100 PSIG SITP BD WELL REMOVE NIGHT SECURITY

PICK UP 5-1/2" PEAK HD TENTION PACKER SET AT 30' PRESSURE TEST BOP 250 PSIG LOW 500 PSIG HIGH HELD OKAY 21 DAY INTERVAL

TOH WITH KILL STRING FROM 1280'

PU 4-1/2" X 1.5' IMPRESSION BLOCK WITH 3/4" ORFICE IN CENTER ON STAND OF 2-7/8" EUE 8RD 6.5# L-80 TUBING

NU STRIPPING HEAD FOR WELL CONTROL DIFFICULTY WITH COLLARS GETTING STUCK IN STRIPPING RUBBER ND STRIPPING HEAD

TIH TO 11,642'

PUMP 10 BBLS CLEAN 4% KCL TO CLEAN OFF FISH FOR IMPRESSION BLOCK WELL BEGAN TO UNLOAD UP CASING SI PIPE RAMS

PUMP 150 BBLS DOWN TUBING TUBING PRESSURE 700-900 PSIG AT RATE OF 1.6 BPM CASING PRESSURE HELD BACK TO 700 PSIG SHUT-IN WELL WITH 200 PSIG CASING PRESSURE WELL NOT COMPLETELY DEAD

LOAD 230 BBLS PRODUCED WATER FROM FLOW BACK TANK HAUL TO DISPOSAL SECURE WELL AND LOCATION

TRAVEL TO KEY YARD

Report Start Date: 10/28/2013

Com

TRAVEL TO LOCATION

SM JSA DISCUSS INSPECT SCE TOH LD WS TIH WITH KILL STRING DO NOT STEP ON LINES CABLES HOSES OR UNEVEN GROUND USE THREE POINT CONTACT WHEN GOING UP AND DOWN STAIRS KEEP HANDS AND FINGERS CLEAR OF MOVING EQUIPMENT SUCH AS TONGS ELEVATORS SLIPS PIPE AND RAILING KEEP CLEAR OF SUSPENDED LOADS USE CLAMPS AND TAG LINES WHEN LD DRILL COLLARS AND FISHING BHA STAY 100% TIED OFF WHEN IN DERRICK INSPECT SRL PRIOR TO USE

INSPECT SCE CHECK FLUID LEVELS ENGAGE RIG SET COFO LIMITS CHECK WELL BORES PRESSURES SICP 280 PSIG BD WELL REMOVE NIGHT SECURITY OPEN PIPE RAMS

TOH LD WS 4000'

PUMP 50 BBLS DOWN TUBING REPLACE TUBING DISPLACEMENT WELL WAS FLOWING BACK

LUNCH BREAK

TOH STAND BACK PRODUCTION FROM 7600'

LD FISHING BHA AND IMPRESSION BLOCK

LD DRILL COLLARS AND CROSSOVERS

TIH WITH KILL STRING TO 1920'

MOVE TUBING CLEAR PIPE RACKS

SECURE WELL AND LOCATION

TRAVEL TO KEY YARD

Report Start Date: 10/29/2013

Com

Travel Time for Rig Crew

JSA Safety Meeting, discussed job procedure & hazards.

Open well w/ 0 psi this morning. ND TIW Valve & open Pipe Rams. Caliper Elevators & Tubing

TOH laying Down Pd Tubing.

JSA Safety Meeting discussed job procedure & hazards

JSA & MIRU Gray Wireline & RU Lubricator equipment

TIH w/ Junk Basket & Gage Ring & tag Fish @ 11,620 Ft, had slight drag going in hole w/ 4.60" gage ring. TOH w/ Junk Basket.

TIH w/ 5 1/2" CIBP & tag up @ 11,620 ft & PU to 11,617 ft & set CIBP. TOH w/ Setting Tool

TIH w/ Dump Bailer & dump 35 ft of cement slurry on top of CIBP to 11,582 ft Top of Cement

TIH w/ 2 7/8" Tubing w/ 4000 ft

TOH laying down 2 7/8" Production Tubing to 1200 ft EOT.

Debrief Meeting discussed the days job events

Travel time for rig crew

Report Start Date: 10/30/2013

Com

Travel Time for Rig Crew

JSA Safety Meeting discussed the days job procedure & hazards

TOH laying down 2 7/8" Tubing

TIH w/ 2 7/8" Tubing from derrick

TOH laying down 2 7/8" Tubing. Pulled 242 Jts 2 7/8" L-80 6.5# Tubing & returned to 1788 for Inspection. NO TUBING LEFT IN WELL

RD Pro testing Flowback equipment

ND BOP Stack

NU D&L meters B-1 Adapter w/ Ball Valve, Bull Plug w/ Needle Valve outlet. Filled wellbore w/ Fresh Water to Surface.



# Summary Report

Major Rig Work Over (MRWO)

Clean-Out

Job Start Date: 10/7/2013

Job End Date: 10/30/2013

|                                     |                               |   |                             |                                |                  |
|-------------------------------------|-------------------------------|---|-----------------------------|--------------------------------|------------------|
| Well Name<br>*CHK*BAISH FEDERAL 012 |                               | Lease<br>BAISH FEDERAL                        | Field Name<br>SHUGART NORTH | Business Unit<br>Mid-Continent |                  |
| Ground Elevation (ft)<br>3,707.00   | Original RKB (ft)<br>3,725.00 | Current RKB Elevation<br>3,732.00, 11/20/2000 |                             | Mud Line Elevation (ft)        | Water Depth (ft) |

Com

RD Pulling Unit & Reverse Unit Equipment.

WELL WORK COMPLETED - TA WELL W/ CIBP @ 11617 FT & CEMENT @ 11,582 FT.

Debrief Meeting discussed the days job events & rig move for the next day.

Travel Time for Rig Crew