

District I - (575) 393-6161
1625 N. French Dr., Santa Fe, NM 87505
District II - (575) 748-1281
811 S. First St., Artesia, NM 88240
District III - (505) 334-6178
1000 Rio Brazos Rd., Aztec, NM 87410
District IV - (505) 476-3460
1220 S. St. Francis Dr., Santa Fe, NM 87505

NM OIL CONSERVATION DISTRICT
ARTESIA DISTRICT
AUG 25 2014
RECEIVED

OIL CONSERVATION DIVISION
1220 South St. Francis Dr.
Santa Fe, NM 87505

WELL API NO. 30-015-30860
5. Indicate Type of Lease STATE <input checked="" type="checkbox"/> FEE
6. State Oil & Gas Lease No. B-1266
7. Lease Name or Unit Agreement Name RINCON STATE
8. Well Number 002
9. OGRID Number 229137
10. Pool name or Wildcat EAST EMPIRE; YESO

SUNDRY NOTICES AND REPORTS ON WELLS
(DO NOT USE THIS FORM FOR PROPOSALS TO DRILL OR TO DEEPEN OR PLUG BACK TO A DIFFERENT RESERVOIR. USE "APPLICATION FOR PERMIT" (FORM C-101) FOR SUCH PROPOSALS.)

1. Type of Well: Oil Well ☒ Gas Well ☐ Other ☐

2. Name of Operator
COG OPERATING LLC

3. Address of Operator
600 W. ILLINOIS AVE., MIDLAND, TEXAS 79701

4. Well Location
Unit Letter; P ; 990 feet from the SOUTH line and 990 feet from the EAST line
Section 20 Township 17S Range 29E NMPM EDDY County

11. Elevation (Show whether DR, RKB, RT, GR, etc.)
3,611' - KB

12. Check Appropriate Box to Indicate Nature of Notice, Report or Other Data

NOTICE OF INTENTION TO:

PERFORM REMEDIAL WORK ☐ PLUG AND ABANDON ☒
TEMPORARILY ABANDON ☐ CHANGE PLANS ☐
PULL OR ALTER CASING ☐ MULTIPLE COMPL ☐
DOWNHOLE COMMINGLE ☐

SUBSEQUENT REPORT OF:

REMEDIAL WORK ☐ ALTERING CASING ☐
COMMENCE DRILLING OPNS. ☐ P AND A
CASING/CEMENT JOB ☐

OTHER: ☐

OTHER: ☐

13. Describe proposed or completed operations. (Clearly state all pertinent details, and give pertinent dates, including estimated date of starting any proposed work). SEE RULE 19.15.7.14 NMAC. For Multiple Completions: Attach wellbore diagram of proposed completion or recompletion.

- 1) SET 5-1/2" CIBP @ 3,900'; PUMP 40 SXS. CMT. @ 3,900'-3,622' (T/GLOR., DV TOOL); CIRC. WELL W/ PXA FLUID.
- 2) PUMP 25 SXS. CMT. @ 2,413'-2,293' (T/ S.A.).
- 3) PUM 25 SXS. CMT. @ 920'-750' (8-5/8" CSG.SHOE, T/YATES); WOC X TAG CMT. PLUG.
- 4) MIX X CIRC. TO SURF. 65 SXS.CMT. @ 417'-3' (13-3/8" CSG.SHOE).
- 5) DIG OUT X CUT OFF WELLHEAD 3' B.G.L.; WELD ON STEEL PLATE TO CSGS. X INSTALL DRY HOLE MARKER.

DURING THIS PROCEDURE WE PLAN TO USE THE CLOSED-LOOP SYSTEM W/ A STEEL TANK AND HAUL CONTENTS TO THE REQUIRED DISPOSAL, PER OCD RULE 19.15.17.

CONDITIONS OF APPROVAL ATTACHED

Approval Granted providing work is Completed by 9-2-2015

Rig Release Date:

Approved for plugging of well bore only.
Liability under bond is retained pending receipt of C-103 (Subsequent Report of Well Plugging) which may be found at OCD Web Page under Forms, www.cmnrd.state.nm.us/oed.

true and complete to the best of my knowledge and belief.

SIGNATURE David A. Eyler TITLE: AGENT

DATE: 08/15/14

Type or print name: DAVID A. EYLER

E-mail address: DEYLER@MILAGRO-RES.COM

PHONE: 432.687.3033

For State Use Only

APPROVED BY: David A. Eyler TITLE: Dist. H. Supervisor DATE: 9-2-14

Conditions of Approval (if any):

* See Attached COA's

COG Operating LLC

Lease & Well #

Rincon State #2

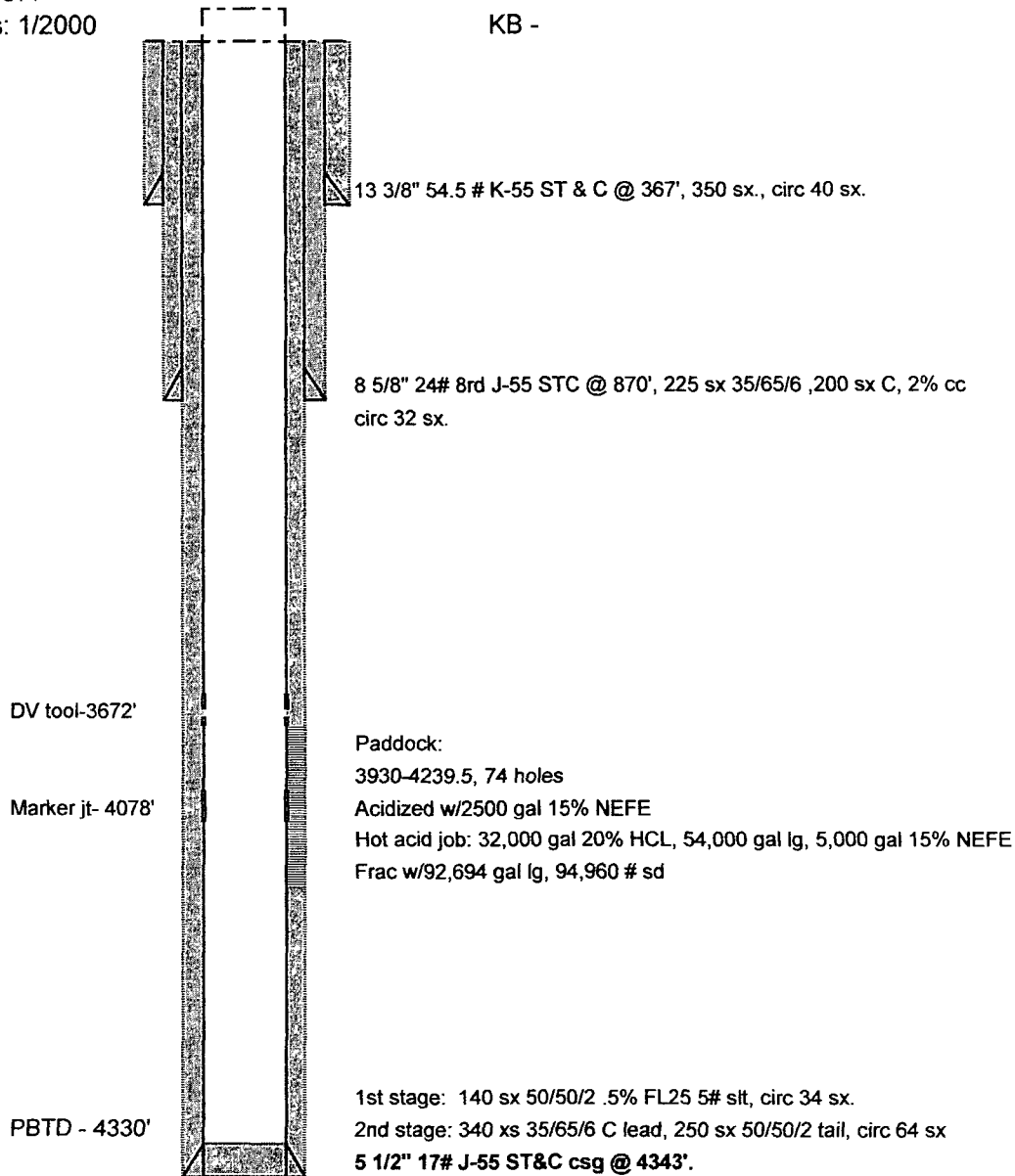
Spud: 1999

API#: 30-015-30860

Elevation - 3677

Completions: 1/2000

KB -



Rods

16' PR

48 X 7/8" rods

120 X 3/4" rods

2' x 3/4' pony

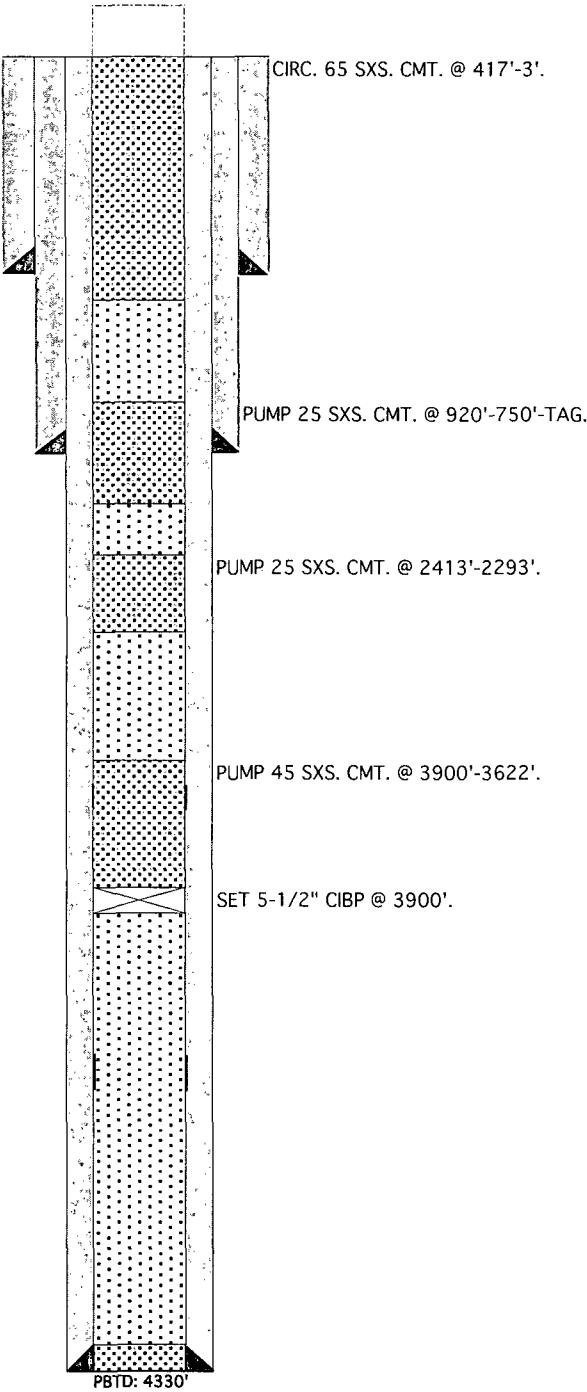
2.5" x 2" x 16' trash

TBG

139 X 2-7/8" TBG

1 x SN, TAC, Marker Joint

COG Operating LLC
Rincon State #2
API # 20-015-308860
Elevation-3677



NEW MEXICO OIL CONSERVATION DIVISION
DISTRICT 2 OFFICE
811 S. FIRST STREET
ARTESIA, NM 88210
(575)748-1283

CONDITIONS OF APPROVAL FOR PLUGGING & ABANDONMENT

Operator: LOG op

Well Name & Number: Rincon State #2

API #: 30-015-30860

1. Produced water will not be used during any part of the plugging & abandonment operation.
2. Notify NMOCD Dist. 2 office at least 24 hrs before beginning work.
3. Closed Loop System is to be used for entire plugging operation. Upon completion, contents of steel pit are to be hauled to a permitted disposal location.
4. Trucking companies being used to haul oilfield waste fluids to a disposal – commercial or private – shall have an approved NMOCD C-133 permit. A copy of this permit shall be available in each truck used to haul waste products. It is the responsibility of the operator, as well as the contractor, to verify that this permit is place prior to performing work. Drivers shall produce a copy upon request of NMOCD Field Inspectors.
5. A subsequent C-103 will serve as notification that the well bore has been plugged ONLY. A C-103 FINAL shall be filed before any bonding can be released on the well. Upon receipt of the Final, an inspection will be performed to verify that the location has been satisfactorily cleaned to NMOCD standards.
6. If work has not begun within 1 year of the approval of this procedure, an extension request must be filed, stating reason that well has not been plugged.
7. Every attempt must be made to clean the well bore out to below the perms, before any plugs can be set, by whatever means possible.
8. Cement Retainers may not be used.

9. Squeeze pressures are not to exceed 500 PSI, unless approval is given by NMOCD.
10. Plugs may be combined after consulting with and getting approval from NMOCD.
11. Minimum WOC time for tag plugs will be 4 Hrs.

DATE: 9-2-14

APPROVED BY: LRD

GUIDELINES FOR PLUGGING AND ABANDONMENT

DISTRICT II / ARTESIA

- All cement plugs will be a minimum of 100' in length or a minimum of 25 sacks of cement, whichever is greater.
- Mud laden fluids must be placed between all cement plugs.
- Mud laden fluids must be mixed at 25 sacks of gel per 100 bbls of water.
- A cement plug is required to be set 50' below and 50' above all casing shoes and casing stub plugs. These plugs must be tagged.
- A CIBP with 35' of cement on top may be set in lieu of 100' cement plug.
- A plug as indicated above must be placed within 100' of top perforation. This plug must be tagged.
- Plugs set below and above salt zones must be tagged.
- No more than 2000' is to be allowed between cement plugs in open hole and no more than 3000' in cased hole.
- DV tools are required to have a 100' cement plug set 50' above and below the tool and must be tagged.
- Formations to be isolated with plugs placed at the top of each formation are:
 - Fusselman
 - Devonian
 - Morrow
 - Wolfcamp
 - Bone Spring
 - Delaware
 - Any Salt Section (Plug at top and bottom)
 - Abo
 - Glorieta
 - Yates (this plug is usually at base of salt section)
- If cement does not exist behind casing strings at recommended formation depths, the casing must be cut and pulled with plugs set at these depths or casing must be perforated and cement squeezed behind casing at the formation depths.
- In the R-111-P area (Potash Mine area) a solid cement plug must be set across the salt section. Fluid used to mix the cement shall be saturated with the salts common to the section penetrated and in suitable proportions, but not more than a 3% calcium chloride by weight of cement will be considered the desired mixture whenever possible (50' below and 50' above).