

DISTRICT I
2125 N. French Dr., Hobbs, NM 88240
Phone (505) 393-8211 Fax: (505) 393-0720

DISTRICT II
811 S. First St., Artesia, NM 88210
Phone (505) 748-1283 Fax: (505) 748-9720

DISTRICT III
1000 Rio Brazos Rd., Aztec, NM 87410
Phone (505) 334-6178 Fax: (505) 334-6170

DISTRICT IV
1210 S. St. Francis Dr., Santa Fe, NM 87505
Phone (505) 476-3460 Fax: (505) 476-3462

NM OIL CONSERVATION Form C-102
State of New Mexico
Energy, Minerals and Natural Resources Department
ARTESIA DISTRICT Revised August 1, 2011

OIL CONSERVATION DIVISION
1210 South St. Francis Dr.
Santa Fe, New Mexico 87505

SEP 26 2014
Submit one copy to appropriate District Office

RECEIVED

WELL LOCATION AND ACREAGE DEDICATION PLAT

☐ AMENDED REPORT

API Number 30-015-42025	Pool Code 96836	Pool Name Bed Lake; Elaneta-Yeso Northeast
Property Code 308703	Property Name AAO FEDERAL	Well Number 15
OGRID No. 873	Operator Name APACHE CORPORATION	Elevation 3627

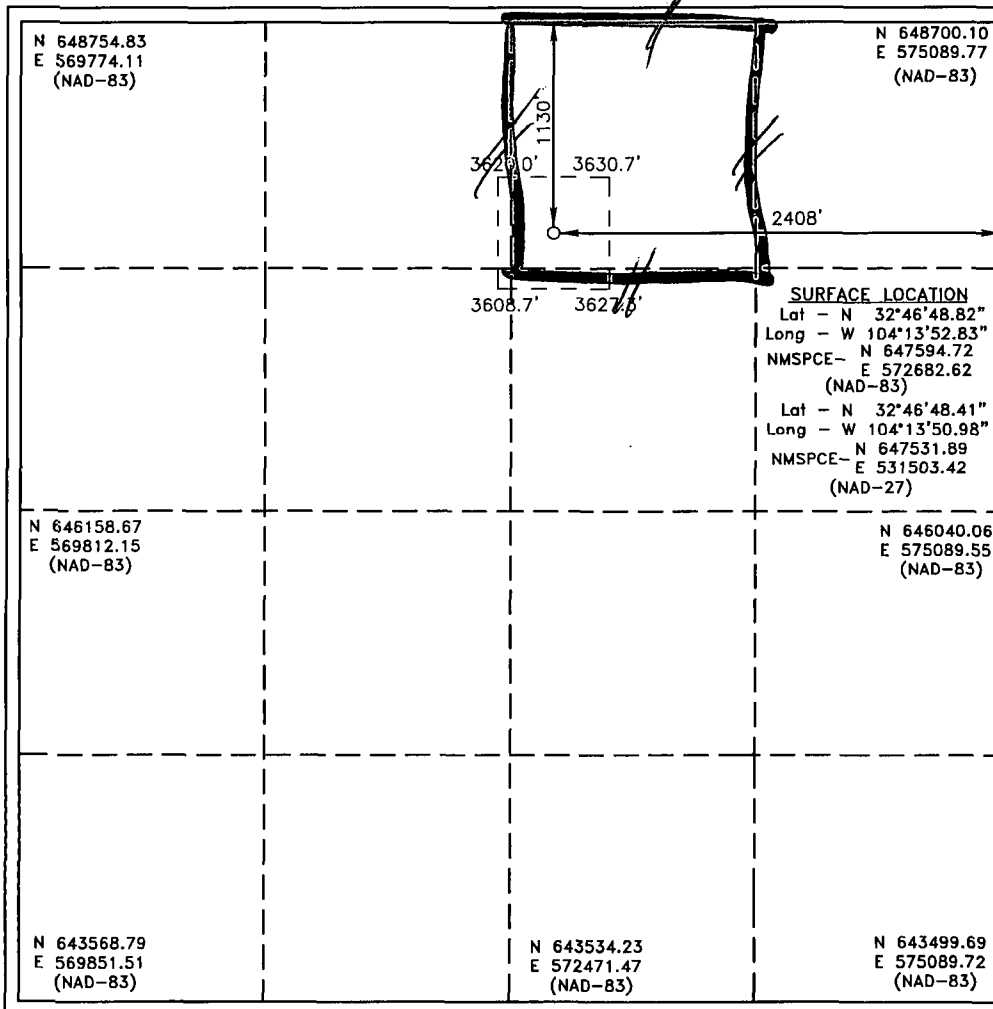
Surface Location

UL or lot No.	Section	Township	Range	Lot Idn	Feet from the	North/South line	Feet from the	East/West line	County
B	1	18 S	27 E		1130	NORTH	2408	EAST	EDDY

Bottom Hole Location If Different From Surface

UL or lot No.	Section	Township	Range	Lot Idn	Feet from the	North/South line	Feet from the	East/West line	County
Dedicated Acres 40.09	Joint or Infill	Consolidation Code	Order No.						

NO ALLOWABLE WILL BE ASSIGNED TO THIS COMPLETION UNTIL ALL INTERESTS HAVE BEEN CONSOLIDATED
OR A NON-STANDARD UNIT HAS BEEN APPROVED BY THE DIVISION



OPERATOR CERTIFICATION	
I hereby certify that the information contained herein is true and complete to the best of my knowledge and belief, and that this organization either owns a working interest or unleased mineral interest in the land including the proposed bottom hole location or has a right to drill this well at this location pursuant to a contract with an owner of such a mineral or working interest, or to a voluntary pooling agreement or a compulsory pooling order heretofore entered by the division.	
Signature <i>Paige Furrell</i>	Date 7/31/14
Printed Name Paige Furrell	
Email Address Paige.Furrell@Apache.com	
SURVEYOR CERTIFICATION	
I hereby certify that the well location shown on this plat was plotted from field notes of actual surveys made by me or under my supervision and that the same is true and correct to the best of my belief.	
Date Surveyed 7/31/14	Signature & Seal of Professional Surveyor
Certificate No. Gary L. Jones 7977	
Basin Surveys 28371	