

DISTRICT I
1625 N. French Dr., Hobbs, NM 88240
Phone: (575) 393-6161 Fax: (575) 393-0720

DISTRICT II
811 S. First St., Artesia, NM 88210
Phone: (575) 748-1283 Fax: (575) 748-9720

DISTRICT III
1000 Rio Brazos Road, Aztec, NM 87410
Phone: (505) 334-6178 Fax: (505) 334-6170

DISTRICT IV
1220 S. St. Francis Dr., Santa Fe, NM 87505
Phone: (505) 476-3460 Fax: (505) 476-3462

State of New Mexico **NM OIL CONSERVATION**
Energy, Minerals & Natural Resources Department
OIL CONSERVATION DIVISION
1220 South St. Francis Dr.
Santa Fe, New Mexico 87505

ARTESIA DISTRICT

Form C-102
Revised August 1, 2011
Submit one copy to appropriate
District Office

RECEIVED

AMENDED REPORT
As Detailed

WELL LOCATION AND ACREAGE DEDICATION PLAT

API Number 30-015-41595	Pool Code 96473	Pool Name Pierce Crossing Bone Spring, East
Property Code 39668	Property Name CEDAR CANYON 16 STATE	Well Number 6H
OGRID No. 16694	Operator Name OXY U.S.A. INC.	Elevation 2927'

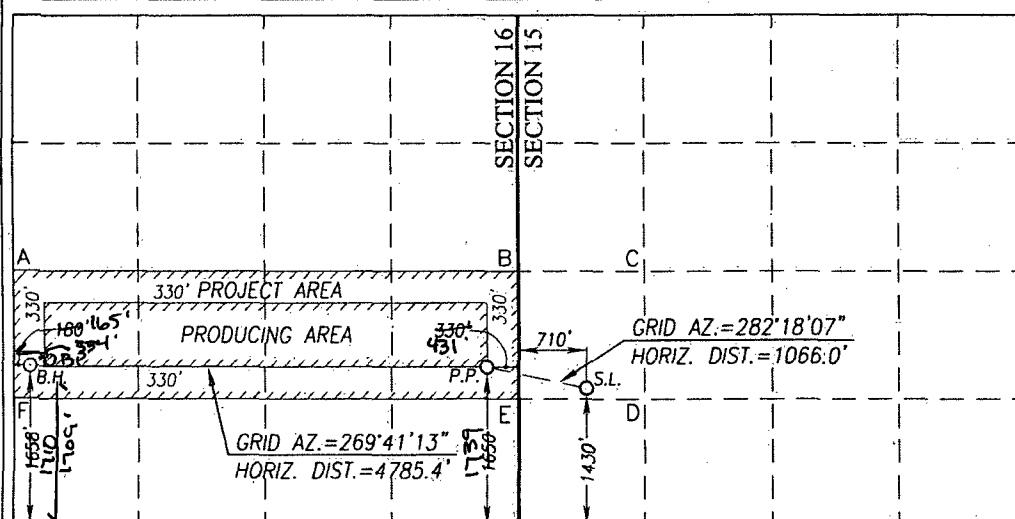
UL or lot No.	Section	Township	Range	Lot Idn	Feet from the	North/South line	Feet from the	East/West line	County
L	15	24-S	29-E		1430	SOUTH	710	WEST	EDDY

Bottom Hole Location If Different From Surface									
UL or lot No.	Section	Township	Range	Lot Idn	Feet from the	North/South line	Feet from the	East/West line	County
L	16	24-S	29-E		1658 1710	SOUTH	180 165	WEST	EDDY

(Top Pen) Penetration Point Location (Bottom Pen) - 1709 FSL 334 FWL (L)									
UL or lot No.	Section	Township	Range	Lot Idn	Feet from the	North/South line	Feet from the	East/West line	County
I	16	24-S	29-E		1650 1739	SOUTH	330 431	EAST	EDDY

Dedicated Acres 160	Joint or Infill N	Consolidation Code	Order No.
-------------------------------	-----------------------------	--------------------	-----------

NO ALLOWABLE WILL BE ASSIGNED TO THIS COMPLETION UNTIL ALL INTERESTS HAVE BEEN CONSOLIDATED OR A NON-STANDARD UNIT HAS BEEN APPROVED BY THE DIVISION



OPERATOR CERTIFICATION

I hereby certify that the information herein is true and complete to the best of my knowledge and belief, and that this organization either owns a working interest or unleased mineral interest in the land including the proposed bottom hole location or has a right to drill this well at this location pursuant to a contract with an owner of such mineral or working interest, or to a voluntary pooling agreement or a compulsory pooling order heretofore entered by the division.

[Signature] 9/23/14
Signature Date
David Stewart Sr. Reg. Adv.
Printed Name
david_stewart@oxy.com
E-mail Address

SURVEYOR CERTIFICATION

I hereby certify that the well location shown on this plat was plotted from field notes of actual surveys made by me or under my supervision, and that the same is true and correct to the best of my belief.

MARCH 28, 2013

Date of Survey
Signature & Seal of Professional Surveyor:

[Signature] 9/23/14
GARY G. EIDSON
NEW MEXICO
12641
PROFESSIONAL SURVEYOR
REG. NO. 12641
Certificate Number... Gary G. Eidson 12641
JWSC W.O.: 14.13.0208

GEODETIC COORDINATES
NAD 27 NME
SURFACE LOCATION
Y=441785.8 N
X=609864.2 E
LAT.=32.214087° N
LONG.=103.978100° W

PENETRATION POINT
Y=442012.8 N
X=608822.9 E
LAT.=32.214721° N
LONG.=103.981464° W

BOTTOM HOLE LOCATION
Y=441986.6 N
X=604038.6 E
LAT.=32.214691° N
LONG.=103.996934° W

CORNER COORDINATES TABLE

A - Y=442982.3 N, X=603852.8 E
B - Y=443013.2 N, X=609146.1 E
C - Y=443011.8 N, X=610470.3 E
D - Y=441683.8 N, X=610477.5 E
E - Y=441684.7 N, X=609155.0 E
F - Y=441655.2 N, X=603860.6 E