

DISTRICT I
1626 N. French Dr., Hobbs, NM 88240
Phone (505) 393-8161 Fax: (505) 393-0720

DISTRICT II
811 S. First St., Artesia, NM 88210
Phone (505) 748-1283 Fax: (505) 748-0720

DISTRICT III
1000 Rio Brazos Rd., Aztec, NM 87410
Phone (505) 334-6178 Fax: (505) 334-6170

DISTRICT IV
1220 S. St. Francis Dr., Santa Fe, NM 87506
Phone (505) 478-3480 Fax: (505) 478-3482

NM OIL CONSERVATION Form C-102
State of New Mexico
Energy, Minerals and Natural Resources Department
ARTESIA DISTRICT Revised August 1, 2011
Submit one copy to appropriate District Office

OIL CONSERVATION DIVISION
1220 South St. Francis Dr.
Santa Fe, New Mexico 87505

OCT 10 2014

RECEIVED

WELL LOCATION AND ACREAGE DEDICATION PLAT

AMENDED REPORT
"As drilled" + Pool Correction

API Number 30-015-42374	Pool Code 47545	Nash Draw; Delaware/Bone Spring (Avalon Sand)
Property Code 306402	Property Name POKER LAKE UNIT	Well Number 430H
GRID No. 260737	Operator Name BOPCO, L.P.	Elevation 3432'

Surface Location

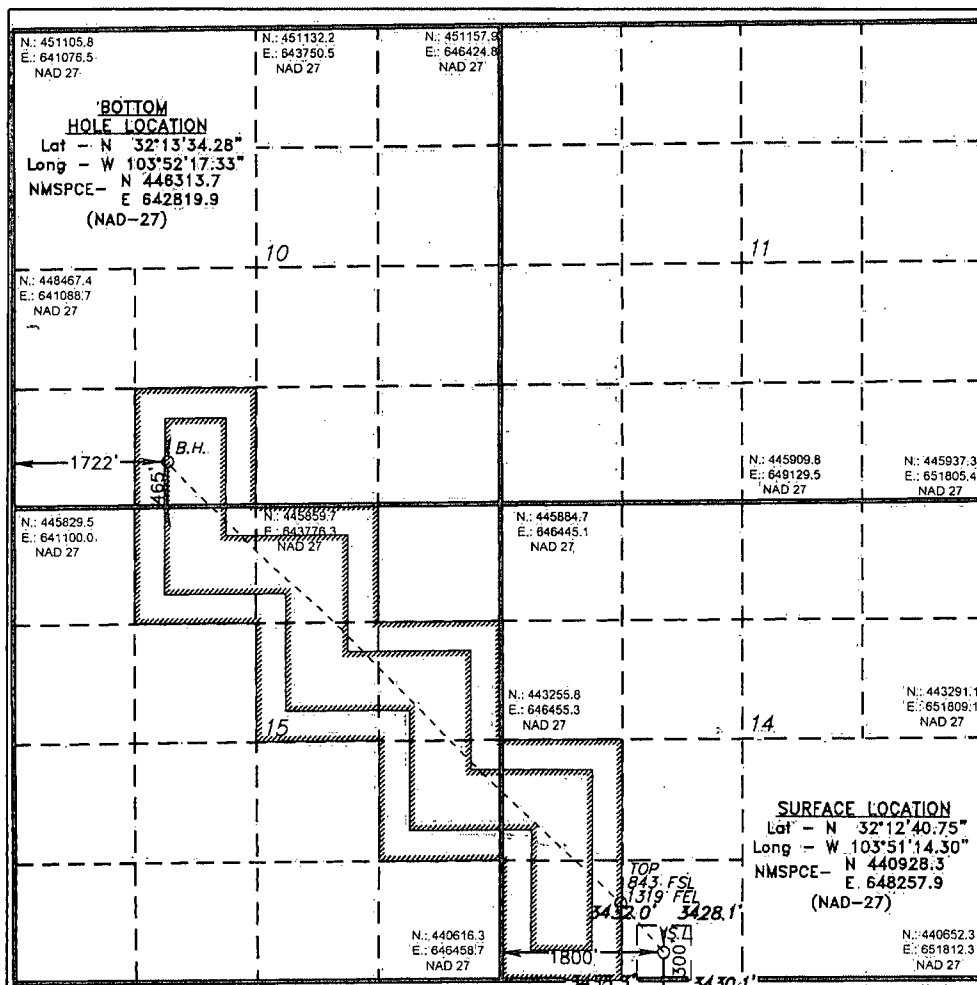
UL or lot No.	Section	Township	Range	Lot Idn	Feet from the	North/South line	Feet from the	East/West line	County
N	14	24 S	30 E		300	SOUTH	1800	WEST	EDDY

Bottom Hole Location If Different From Surface

UL or lot No.	Section	Township	Range	Lot Idn	Feet from the	North/South line	Feet from the	East/West line	County
N	10	24 S	30 E		465	SOUTH	1722	WEST	EDDY

Dedicated Acres 320	Joint or Infill	Consolidation Code	Order No.
------------------------	-----------------	--------------------	-----------

NO ALLOWABLE WILL BE ASSIGNED TO THIS COMPLETION UNTIL ALL INTERESTS HAVE BEEN CONSOLIDATED
OR A NON-STANDARD UNIT HAS BEEN APPROVED BY THE DIVISION



OPERATOR CERTIFICATION

I hereby certify that the information contained herein is true and complete to the best of my knowledge and belief, and that this organization either owns a working interest or unleased mineral interest in the land including the proposed bottom hole location or has a right to drill this well at this location pursuant to a contract with an owner of such a mineral or working interest, or to a voluntary pooling agreement or a compulsory pooling order heretofore entered by the division.

Tracie J Cherry 10/27/14
Signature Date

Tracie J Cherry
Printed Name
tjcherry@basspet.com
Email Address

SURVEYOR CERTIFICATION

I hereby certify that the well location shown on this plat was plotted from field notes of actual surveys made by me or under my supervision and that the same is true and correct to the best of my belief.

OCTOBER 25, 2013

Date Surveyed
Signature & Seal of
Professional Surveyor

Certificate No. Gary L. Jones 7977
BASIN SURVEYS

0' 500' 1000' 1500' 2000'
SCALE: 1" = 1000'
WO Num.: 29641