

NM OIL CONSERVATION

DISTRICT I
1825 N. French Dr., Hobbs, NM 88240
Phone (505) 393-8181 Fax: (505) 393-0720

DISTRICT II
811 S. First St., Artesia, NM 88210
Phone (505) 748-1283 Fax: (505) 748-0720

ARTESIA DISTRICT

NOV 24 2014

State of New Mexico
Energy, Minerals and Natural Resources Department

Form C-102
Revised August 1, 2011.

Submit one copy to appropriate
District Office

OIL CONSERVATION DIVISION

1220 South St. Francis Dr.
Santa Fe, New Mexico 87505

DISTRICT III
1000 Rio Brazos Rd., Aztec, NM 87410
Phone (505) 334-6178 Fax: (505) 334-8170

DISTRICT IV
1820 S. St. Francis Dr., Santa Fe, NM 87505
Phone (505) 476-3460 Fax: (505) 476-3462

RECEIVED

WELL LOCATION AND ACREAGE DEDICATION PLAT

AMENDED REPORT

"As Drilled"

API Number 30-015-42008	Pool Code 98053	Pool Name WC-015 G-08 S212915D; Bone Spring
Property Code 40361	Property Name BIG EDDY UNIT D19	Well Number 34H
OGRID No. 260737	Operator Name BOPCO, L.P.	Elevation 3148'

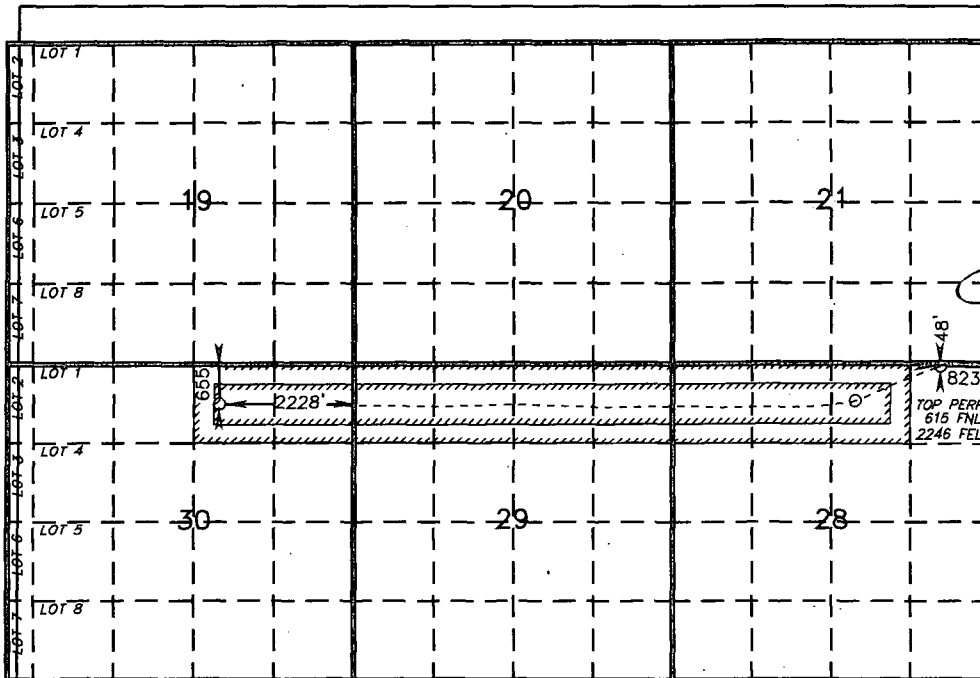
Surface Location

UL or lot No.	Section	Township	Range	Lot Idn	Feet from the	North/South line	Feet from the	East/West line	County
A	28	21 S	30 E		48	NORTH	823	EAST	EDDY

Bottom Hole Location If Different From Surface

UL or lot No.	Section	Township	Range	Lot Idn	Feet from the	North/South line	Feet from the	East/West line	County
B	30	21 S	30 E		655	NORTH	2228	EAST	EDDY
Dedicated Acres 360	Joint or Infill	Consolidation Code	Order No.						

NO ALLOWABLE WILL BE ASSIGNED TO THIS COMPLETION UNTIL ALL INTERESTS HAVE BEEN CONSOLIDATED
OR A NON-STANDARD UNIT HAS BEEN APPROVED BY THE DIVISION



OPERATOR CERTIFICATION

I hereby certify that the information contained herein is true and complete to the best of my knowledge and belief, and that this organization either owns a working interest or unleased mineral interest in the land including the proposed bottom hole location or has a right to drill this well at this location pursuant to a contract with an owner of such a mineral or working interest, or to a voluntary pooling agreement or a compulsory pooling order heretofore entered by the division.

Signature: *Tracie J Cherry* Date: 11/21/14

Printed Name: Tracie J Cherry

Email Address: tjcherry@basspet.com

SURVEYOR CERTIFICATION

I hereby certify that the well location shown on this plat was plotted from field notes of actual surveys made by me or under my supervision, and that the same is true and correct to the best of my belief.

Date Surveyed: 11/24/2014
Signature: *[Signature]* of Professional Surveyor 7977

Certificate No. 7977
Basin: 30-015-42008

0' 1500' 3000' 4500' 6000'
SCALE: 1" = 3000'
WO Num.: 30614

BOTTOM HOLE LOCATION
Lat - N 32°27'20.38"
Long - W 103°55'04.34"
NMSPC- N 529732.1
E 628150.0
(NAD-27)

SURFACE LOCATION
Lat - N 32°27'26.16"
Long - W 103°52'44.71"
NMSPC- N 530364.8
E 640111.6
(NAD-27)