

DISTRICT I
1625 N. French Dr., Hobbs, NM 88240
Phone (505) 393-6181 Fax: (505) 393-0720

DISTRICT II
611 S. First St., Artesia, NM 88210
Phone (505) 746-1223 Fax: (505) 746-9720

DISTRICT III
1000 Rio Brazos Rd., Aztec, NM 87410
Phone (505) 334-6176 Fax: (505) 334-6170

DISTRICT IV
1220 S. St. Francis Dr., Santa Fe, NM 87505
Phone (505) 478-3480 Fax: (505) 478-3482

State of New Mexico **NM OIL CONSERVATION**
Energy, Minerals and Natural Resources Department
OIL CONSERVATION DIVISION
1220 South St. Francis Dr.
Santa Fe, New Mexico 87505

Form C-102
Revised August 1, 2011
Submit one copy to appropriate
District Office

RECEIVED

☒ AMENDED REPORT

WELL LOCATION AND ACREAGE DEDICATION PLAT

API Number 30-015-42007	Pool Code 78053	Pool Name WC-015 G-08 S212915D; BS
Property Code 40361	Property Name BIG EDDY UNIT D19	Well Number 35H
ODRID No. 260737	Operator Name BOPCO, L.P.	Elevation 3148'

Surface Location

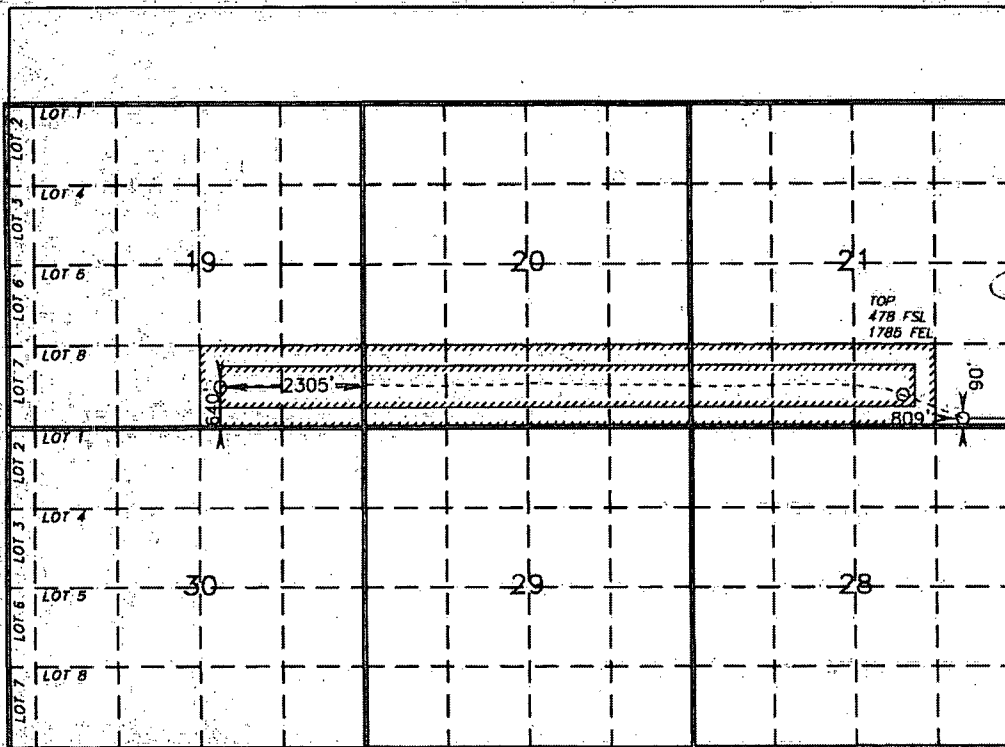
UL or lot No.	Section	Township	Range	Lot Idn	Feet from the	North/South line	Feet from the	East/West line	County
P	21	21 S	30 E		90	SOUTH	809	EAST	EDDY

Bottom Hole Location if Different From Surface

UL or lot No.	Section	Township	Range	Lot Idn	Feet from the	North/South line	Feet from the	East/West line	County
O	19	21 S	30 E		640	SOUTH	2305	EAST	EDDY

Dedicated Acres	Joint or Infill	Consolidation Code	Order No.
360			

NO ALLOWABLE WILL BE ASSIGNED TO THIS COMPLETION UNTIL ALL INTERESTS HAVE BEEN CONSOLIDATED OR A NON-STANDARD UNIT HAS BEEN APPROVED BY THE DIVISION



OPERATOR CERTIFICATION

I hereby certify that the information contained herein is true and complete to the best of my knowledge and belief, and that this organization either owns a working interest or unleased mineral interest in the land including the proposed bottom hole location or has a right to drill this well at this location pursuant to a contract with an owner of such a mineral or working interest, or to a voluntary pooling agreement or a compulsory pooling order heretofore entered by the division.

Signature *Tracie J Cherry* Date *08/11/14*
Printed Name **Tracie J Cherry**
Email Address **tjcherry@basspet.com**

SURVEYOR CERTIFICATION

I hereby certify that the well location shown on this plat was plotted from field notes of actual surveys made by me or under my supervision, and that the same is true and correct to the best of my belief.

FEBRUARY 25 2014

Date Surveyed
Signature & Seal of Professional Surveyor
Certificate No. **7977**
GARY L. MOSES
DRAFT SURVEYOR

0' 1500' 3000' 4500' 6000'
SCALE: 1" = 3000'
WO Num.: 30126

PROPOSED BOTTOM HOLE LOCATION

Lot - N 32°27'33.19"
Long - W 103°55'05.23"
NMSPC - N 531027.0
E 628068.9
(NAD-27)

SURFACE LOCATION

Lot - N 32°27'27.52"
Long - W 103°52'44.54"
NMSPC - N 530502.8
E 640125.2
(NAD-27)