

NM OIL CONSERVATION

ARTESIA DISTRICT

FEB 17 2015

Form C-102

Revised August 1, 2011

DISTRICT I

1625 N. French Dr., Hobbs, NM 88240
Phone (575) 393-6161 Fax: (575) 393-0720

DISTRICT II

811 S. First St., Artesia, NM 88210
Phone (575) 748-1283 Fax: (575) 748-9720

DISTRICT III

1000 Rio Brazos Rd., Aztec, NM 87410
Phone (505) 334-6178 Fax: (505) 334-6170

DISTRICT IV

1220 S. St. Francis Dr., Santa Fe, NM 87505
Phone (505) 476-3460 Fax: (505) 476-3462

State of New Mexico
Energy, Minerals and Natural Resources Department

OIL CONSERVATION DIVISION

1220 South St. Francis Dr.
Santa Fe, New Mexico 87505

RECEIVED

Submit one copy to appropriate
District Office

WELL LOCATION AND ACREAGE DEDICATION PLAT

AMENDED REPORT
As Drilled

| | | |
|----------------------------|----------------------------------|--------------------------------------|
| API Number 30-015-38669 | Pool Code 96209 | Pool Name Corral Canyon; Wolfcamp |
| Property Code 306402 | Property Name POKER LAKE UNIT | Well Number 348H |
| OGRID No. 260737 | Operator Name BOPCO, L.P. | Elevation 3321' |

Surface Location

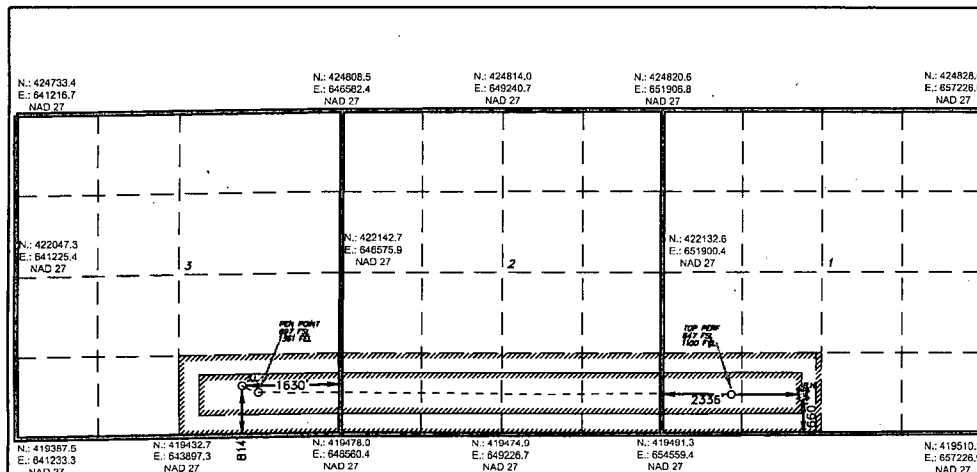
| UL or lot No. | Section | Township | Range | Lot Idn | Feet from the | North/South line | Feet from the | East/West line | County |
|---------------|---------|----------|-------|---------|---------------|------------------|---------------|----------------|--------|
| 0 | 3 | 25 S | 30 E | | 814 | SOUTH | 1630 | EAST | EDDY |

Bottom Hole Location If Different From Surface

| UL or lot No. | Section | Township | Range | Lot Idn | Feet from the | North/South line | Feet from the | East/West line | County |
|---------------|---------|----------|-------|---------|---------------|------------------|---------------|----------------|--------|
| N | 1 | 25 S | 30 E | | 660 | SOUTH | 2336 | WEST | EDDY |

| | | | |
|------------------------|-----------------|--------------------|-----------|
| Dedicated Acres 320 | Joint or Infill | Consolidation Code | Order No. |
|------------------------|-----------------|--------------------|-----------|

NO ALLOWABLE WILL BE ASSIGNED TO THIS COMPLETION UNTIL ALL INTERESTS HAVE BEEN CONSOLIDATED
OR A NON-STANDARD UNIT HAS BEEN APPROVED BY THE DIVISION



SURFACE LOCATION
Lat - N 32°09'16.40"
Long - W 103°51'54.03"
NMSPCE - N 420264.309
E 644935.227
(NAD-27)

BOTTOM HOLE LOCATION
Lat - N 32°09'14.69"
Long - W 103°50'05.65"
NMSPCE - N 420133.2
E 654253.0
(NAD-27)

OPERATOR CERTIFICATION

I hereby certify that the information contained herein is true and complete to the best of my knowledge and belief, and that this organization either owns a working interest or unleased mineral interest in the land including the proposed bottom hole location or has a right to drill this well at this location pursuant to a contract with an owner of such a mineral or working interest, or to a voluntary pooling agreement or a compulsory pooling order heretofore entered by the division.

Signature: *Tracie J Cherry* Date: 02/13/15

Tracie J Cherry

Printed Name

tjcherry@basspet.com

Email Address

SURVEYOR CERTIFICATION

I hereby certify that the well location shown on this plat was plotted from field notes of actual surveys made by me or under my supervision, and that the same is true and correct to the best of my belief.

Signature: *[Signature]*
Date Surveyed: *02/13/15*
Professional Surveyor

Certificate No. 7977
BASIN SURVEYS

0' 1500' 3000' 4500' 6000'
SCALE: 1" = 3000'
WO Num.: 25011