

Submit 1 Copy To Appropriate District  
Office  
District I - (575) 393-6161  
1625 N. French Dr., Hobbs, NM 88240  
District II - (575) 748-1283  
811 S. First St., Artesia, NM 88210  
District III - (505) 334-6178  
1000 Rio Brazos Rd., Aztec, NM 87410  
District IV - (505) 476-3460  
1220 S. St. Francis Dr., Santa Fe, NM  
87505

State of New Mexico  
Energy, Minerals and Natural Resources

Form C-103  
Revised July 18, 2013

OIL CONSERVATION DIVISION  
1220 South St. Francis Dr.  
Santa Fe, NM 87505

WELL API NO.  
30-015-42895

5. Indicate Type of Lease

STATE ☒ FEE ☐

6. State Oil & Gas Lease No.

7. Lease Name or Unit Agreement Name  
Belloq 2 State

8. Well Number  
2H

9. OGRID Number  
6137

10. Pool name or Wildcat  
WC-015 G-08 S233102C; Wolfcamp

SUNDRY NOTICES AND REPORTS ON WELLS  
(DO NOT USE THIS FORM FOR PROPOSALS TO DRILL OR TO DEEPEN OR PLUG BACK TO A  
DIFFERENT RESERVOIR. USE "APPLICATION FOR PERMIT" (FORM C-101) FOR SUCH  
PROPOSALS.)

1. Type of Well: Oil Well ☒ Gas Well ☐ Other ☐

2. Name of Operator  
Devon Energy Production Company, LP 405-228-7203

3. Address of Operator  
333 West. Sheridan Avenue  
Oklahoma City, OK 73102-5015 405-228-7203

4. Well Location

Lot Number C : 200 feet from the NORTH line and 1720 feet from the WEST line  
Section 2 Township 263S Range 31E NMPM Eddy County

11. Elevation (Show whether DR, RKB, RT, GR, etc.)  
3430' GL

12. Check Appropriate Box to Indicate Nature of Notice, Report or Other Data

NOTICE OF INTENTION TO:

PERFORM REMEDIAL WORK ☐ PLUG AND ABANDON ☐  
TEMPORARILY ABANDON ☐ CHANGE PLANS ☐  
PULL OR ALTER CASING ☐ MULTIPLE COMPL ☐  
DOWNHOLE COMMINGLE ☐  
CLOSED-LOOP SYSTEM ☐

OTHER: Formation Correction ☒

SUBSEQUENT REPORT OF:

REMEDIAL WORK ☐ ALTERING CASING ☐  
COMMENCE DRILLING OPNS. ☐ P AND A ☐  
CASING/CEMENT JOB ☐

OTHER: ☐

13. Describe proposed or completed operations. (Clearly state all pertinent details, and give pertinent dates, including estimated date of starting any proposed work). SEE RULE 19.15.7.14 NMAC. For Multiple Completions: Attach wellbore diagram of proposed completion or recompletion.

Devon Energy Production Company, L.P. respectfully requests to make a correction to the formation on the approved permit for the Belloq 2 State 2H. Attached is the correct C-102 reflecting our target formation to be the Wolfcamp. Thank you.

NM OIL CONSERVATION

ARTESIA DISTRICT

FEB 27 2015

I hereby certify that the information above is true and complete to the best of my knowledge and belief.

RECEIVED

SIGNATURE

*Trina C. Couch*

TITLE: Regulatory Analyst

DATE 2/26/2015

Type or print name: Trina C. Couch

E-mail address: trina.couch@dmn.com

PHONE: 405-228-7203

For State Use Only

APPROVED BY:

*Dr. Dade*

TITLE

*Dr. J. P. Supervisor*

DATE

2/27/2015

Conditions of Approval (if any):

District I  
1625 N. French Dr., Hobbs, NM 88240  
Phone: (505) 393-6161 Fax: (505) 393-0720  
District II  
811 S. First St., Artesia, NM 88210  
Phone: (505) 748-1283 Fax: (505) 748-9720  
District III  
1000 Rio Bruzoz Road, Aztec, NM 87410  
Phone: (505) 334-6178 Fax: (505) 334-6170  
District IV  
1220 S. St. Francis Dr., Santa Fe, NM 87505  
Phone: (505) 476-3460 Fax: (505) 476-3462

State of New Mexico  
Energy, Minerals & Natural Resources Department  
OIL CONSERVATION DIVISION  
1220 South St. Francis Dr.  
Santa Fe, NM 87505

Form C-102  
Revised August 1, 2011  
Submit one copy to appropriate  
District Office

☐ AMENDED REPORT

WELL LOCATION AND ACREAGE DEDICATION PLAT

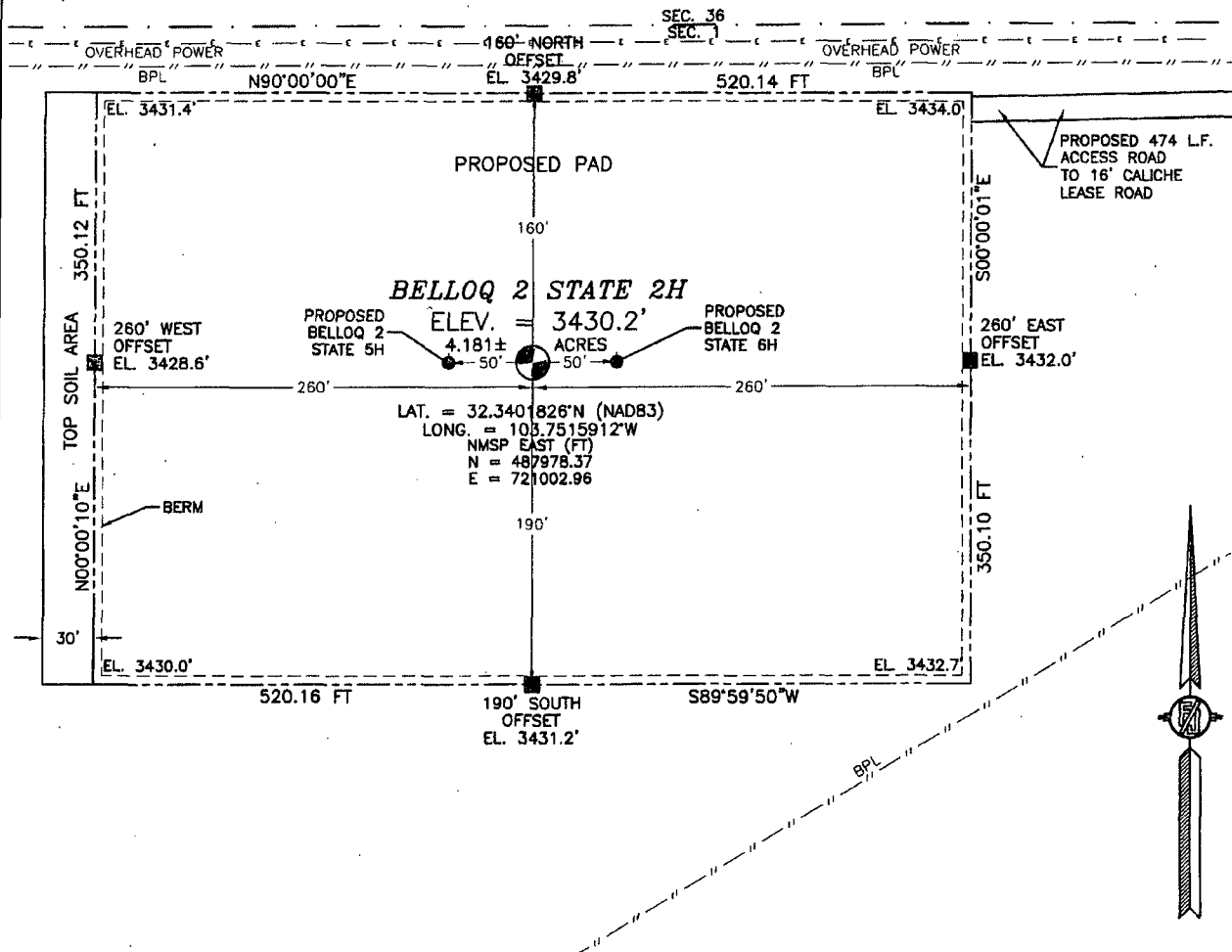
<sup>1</sup> API Number 30-015-42895		<sup>2</sup> Pool Code 98123		<sup>3</sup> Pool Name WC-015 G-08 S233102C; Wolfcamp	
<sup>4</sup> Property Code 98123		<sup>5</sup> Property Name BELLOQ 2 STATE			<sup>6</sup> Well Number 2H
<sup>7</sup> OGRID No. 6137		<sup>8</sup> Operator Name DEVON ENERGY PRODUCTION COMPANY, L.P.			<sup>9</sup> Elevation 3430.2
<sup>10</sup> Surface Location					
UL or lot no. 3	Section 2	Township 23 S	Range 31 E	Lot Idn 200	North/South line NORTH
Feet from the 1720		East/West line WEST		County EDDY	
<sup>11</sup> Bottom Hole Location If Different From Surface					
UL or lot no. N	Section 2	Township 23 S	Range 31 E	Lot Idn 330	North/South line SOUTH
Feet from the 1980		East/West line WEST		County EDDY	
<sup>12</sup> Dedicated Acres 159.64 ac		<sup>13</sup> Joint or Infill	<sup>14</sup> Consolidation Code	<sup>15</sup> Order No.	

No allowable will be assigned to this completion until all interests have been consolidated or a non-standard unit has been approved by the division.

<p>N89°43'50"E 2641.93' FT</p> <p>1720'</p> <p>NW CORNER SEC. 2 LAT. = 32.3407356°N LONG. = 103.7571603°W NMSP EAST (FT) N = 488170.26 E = 719281.88</p> <p>L3 39.64 AC (BLM)</p> <p>L4</p> <p>W/4 CORNER SEC. 2 LAT. = 32.3335234°N LONG. = 103.7571441°W NMSP EAST (FT) N = 485546.51 E = 719301.00</p> <p>NOTE: LATITUDE AND LONGITUDE COORDINATES ARE SHOWN USING THE NORTH AMERICAN DATUM OF 1983 (NAD83). LISTED NEW MEXICO STATE PLANE EAST COORDINATES ARE GRID (NAD83). BASIS OF BEARING AND DISTANCES USED ARE NEW MEXICO STATE PLANE EAST COORDINATES MODIFIED TO THE SURFACE.</p> <p>SW CORNER SEC. 2 LAT. = 32.3262648°N LONG. = 103.7571273°W NMSP EAST (FT) N = 482905.89 E = 719320.39</p> <p>1980'</p> <p>S89°55'21"W 2645.27' FT</p>		<p>N89°43'50"E 2641.93' FT</p> <p>N/4 CORNER SEC. 2 SCALED</p> <p>NE CORNER SEC. 2 LAT. = 32.3407247°N LONG. = 103.7400558°W NMSP EAST (FT) N = 488195.11 E = 724564.52</p> <p>L2</p> <p>Project Area</p> <p>Producing Area</p> <p>E/4 CORNER SEC. 2 LAT. = 32.3334654°N LONG. = 103.7400347°W NMSP EAST (FT) N = 485554.27 E = 724585.66</p> <p>S/4 CORNER SEC. 2 LAT. = 32.3262353°N LONG. = 103.7485656°W NMSP EAST (FT) N = 482909.48 E = 721965.08</p> <p>SE CORNER SEC. 2 LAT. = 32.3262061°N LONG. = 103.7400123°W NMSP EAST (FT) N = 482913.39 E = 724607.21</p> <p>S00°27'31"E 2641.50' FT</p> <p>S00°28'02"E 2641.53' FT</p>	
<p><sup>17</sup> OPERATOR CERTIFICATION</p> <p>I hereby certify that the information contained herein is true and complete to the best of my knowledge and belief, and that this organization either owns a working interest or undivided mineral interest in the land including the proposed bottom hole location or has a right to drill this well at this location pursuant to a contract with an owner of such a mineral or working interest, or to a voluntary pooling agreement or a compulsory pooling order heretofore entered by the division.</p> <p><i>Trina C. Couch</i> 2/6/15 Signature Date</p> <p>Trina C. Couch, Regulatory Analyst Printed Name</p> <p>trina.couch@dmv.com E-mail Address</p>		<p><sup>18</sup> SURVEYOR CERTIFICATION</p> <p>I hereby certify that the well location shown on this plat was plotted from flight notes of actual surveys made by me or under my supervision and that the same is true and correct to the best of my belief.</p> <p>DECEMBER 12, 2014 Date of Survey</p> <p><i>[Signature]</i> Signature and Seal of Registered Surveyor</p> <p>Certificate Number F11107N E. J. RAMILLO, PLS 12797 SURVEY NO. 3430</p>	

**SECTION 2, TOWNSHIP 23 SOUTH, RANGE 31 EAST, N.M.P.M.  
EDDY COUNTY, STATE OF NEW MEXICO  
SITE MAP**

NOTE: LATITUDE AND LONGITUDE COORDINATES ARE SHOWN USING THE NORTH AMERICAN DATUM OF 1983 (NAD83). LISTED NEW MEXICO STATE PLANE EAST COORDINATES ARE GRID (NAD83). BASIS OF BEARING AND DISTANCES USED ARE NEW MEXICO STATE PLANE EAST COORDINATES MODIFIED TO THE SURFACE.



010 50 100 200

SCALE 1" = 100'

**DIRECTIONS TO LOCATION**

FROM THE INTERSECTION OF SR. 128 (JAL HWY) AND CR. 798 (RED ROAD) GO NORTH ON RED ROAD 6.15 MILES TO CALICHE LEASE ROAD ON LEFT BETWEEN POWER POLES GO WEST ON CALICHE LEASE ROAD 0.5 MILES TO END OF CALICHE LEASE ROAD FOLLOW FLAGS WEST 474 L.F. TO NORTHEAST CORNER OF PROPOSED PAD

**DEVON ENERGY PRODUCTION COMPANY, L.P.  
BELLOQ 2 STATE 2H**

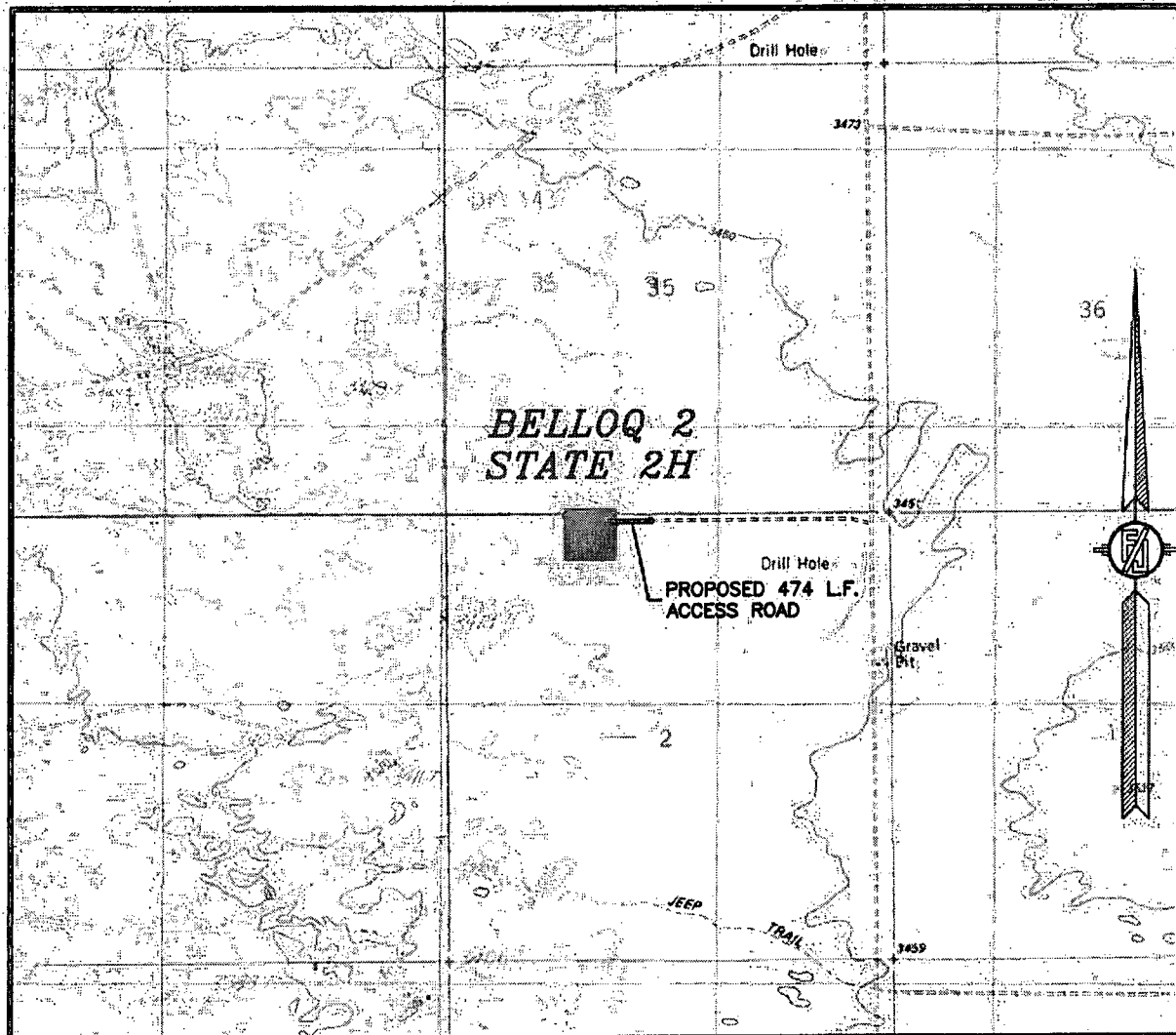
**LOCATED 200 FT. FROM THE NORTH LINE  
AND 1720 FT. FROM THE WEST LINE OF  
SECTION 2, TOWNSHIP 23 SOUTH,  
RANGE 31 EAST, N.M.P.M.  
EDDY COUNTY, STATE OF NEW MEXICO**

DECEMBER 12, 2014

SURVEY NO. 3420

**MADRON SURVEYING, INC.** 301 SOUTH CANAL (575) 234-3341 **CARLSBAD, NEW MEXICO**

SECTION 2, TOWNSHIP 23 SOUTH, RANGE 31 EAST, N.M.P.M.  
 EDDY COUNTY, STATE OF NEW MEXICO  
 LOCATION VERIFICATION MAP



USGS QUAD MAP:  
 LOS MEDANOS  
 BOOTLEG RIDGE

NOT TO SCALE

DEVON ENERGY PRODUCTION COMPANY, L.P.  
 BELLOQ 2 STATE 2H

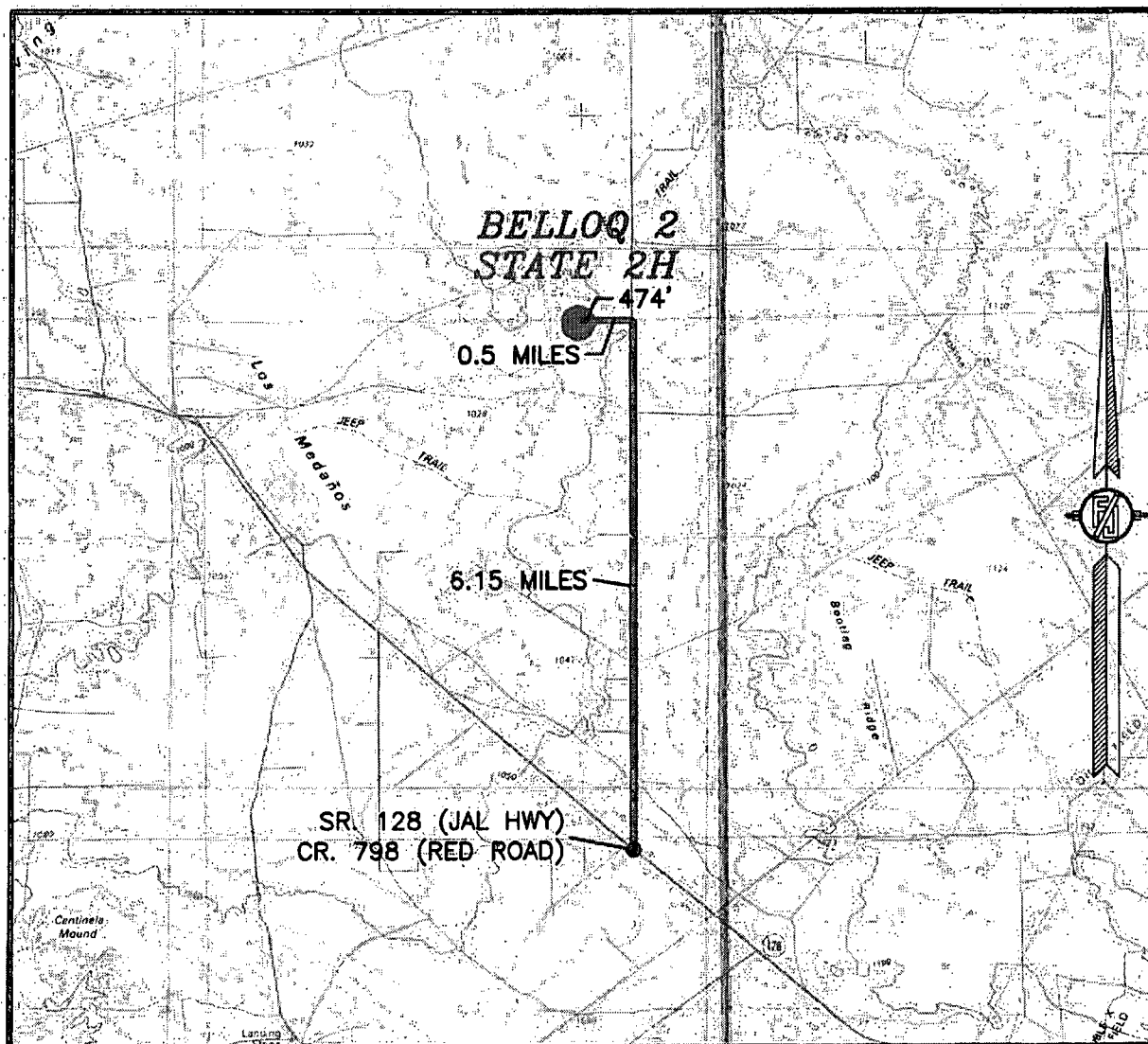
LOCATED 200 FT. FROM THE NORTH LINE  
 AND 1720 FT. FROM THE WEST LINE OF  
 SECTION 2, TOWNSHIP 23 SOUTH,  
 RANGE 31 EAST, N.M.P.M.  
 EDDY COUNTY, STATE OF NEW MEXICO

DECEMBER 12, 2014

MADRON SURVEYING, INC. 301 SOUTH CANAL (575) 234-3341 CARLSBAD, NEW MEXICO

SURVEY NO. 3420

SECTION 2, TOWNSHIP 23 SOUTH, RANGE 31 EAST, N.M.P.M.  
EDDY COUNTY, STATE OF NEW MEXICO  
VICINITY MAP



DISTANCES IN MILES

NOT TO SCALE

**DIRECTIONS TO LOCATION**

FROM THE INTERSECTION OF SR 128 (JAL HWY) AND CR 798 (RED ROAD) GO NORTH ON RED ROAD 6.15 MILES TO CALICHE LEASE ROAD ON LEFT BETWEEN POWER POLES GO WEST ON CALICHE LEASE ROAD 0.5 MILES TO END OF CALICHE LEASE ROAD FOLLOW FLAGS WEST 474 L.F. TO NORTHEAST CORNER OF PROPOSED PAD.

**DEVON ENERGY PRODUCTION COMPANY, L.P.**  
**BELLOQ 2 STATE 2H**

LOCATED 200 FT. FROM THE NORTH LINE  
AND 1720 FT. FROM THE WEST LINE OF  
SECTION 2, TOWNSHIP 23 SOUTH,  
RANGE 31 EAST, N.M.P.M.  
EDDY COUNTY, STATE OF NEW MEXICO

DECEMBER 12, 2014

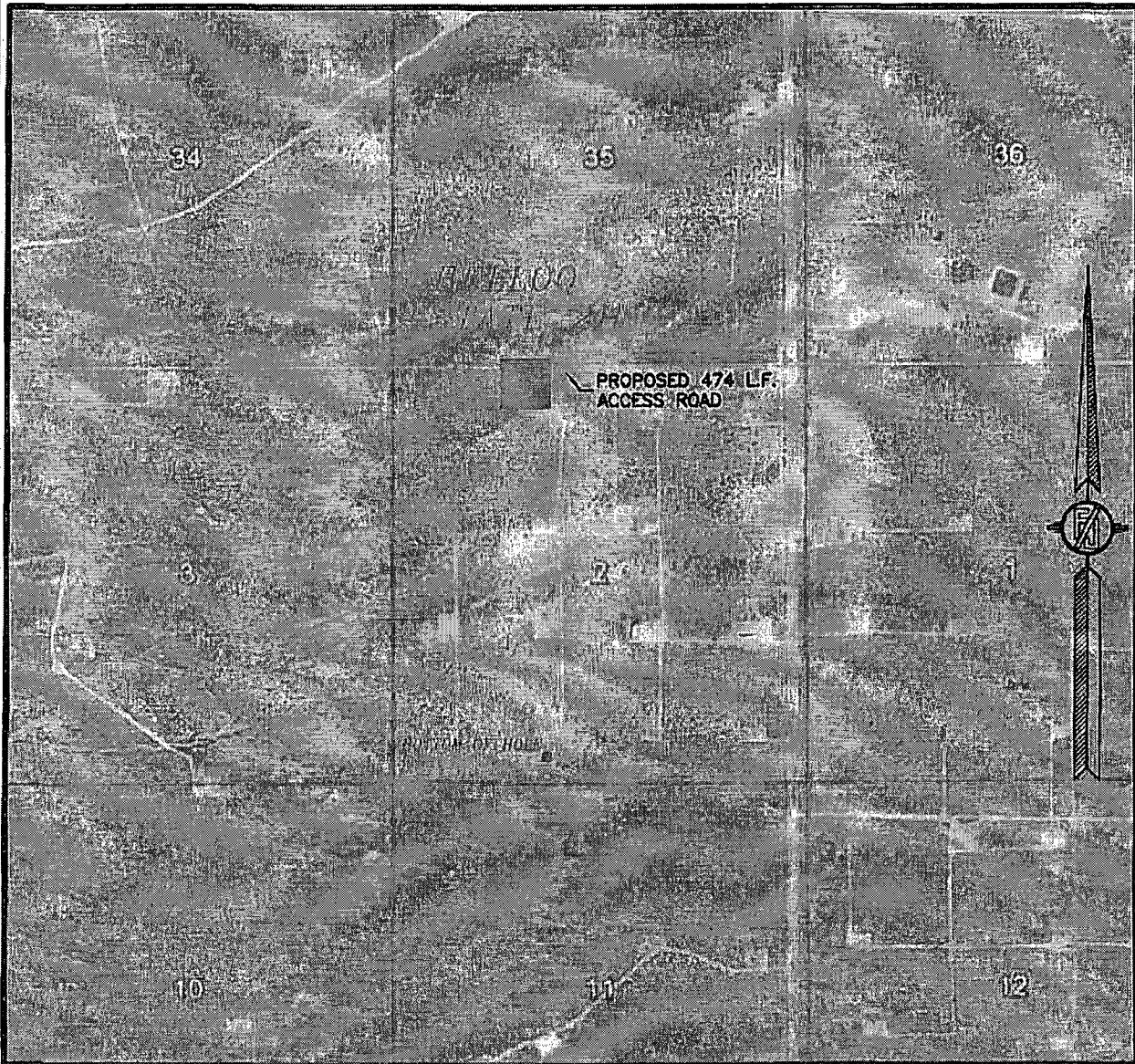
SURVEY NO. 3420

MADRON SURVEYING, INC. 301 SOUTH CANAL  
(575) 234-3341

CARLSBAD, NEW MEXICO

SECTION 2, TOWNSHIP 23 SOUTH, RANGE 31 EAST, N.M.P.M.  
EDDY COUNTY, STATE OF NEW MEXICO

**AERIAL PHOTO**



NOT TO SCALE  
AERIAL PHOTO:  
GOOGLE EARTH  
FEB. 2014

**DEVON ENERGY PRODUCTION COMPANY, L.P.**

**BELLOQ 2 STATE 2H**

LOCATED 200 FT. FROM THE NORTH LINE  
AND 1720 FT. FROM THE WEST LINE OF  
SECTION 2, TOWNSHIP 23 SOUTH,  
RANGE 31 EAST, N.M.P.M.  
EDDY COUNTY, STATE OF NEW MEXICO

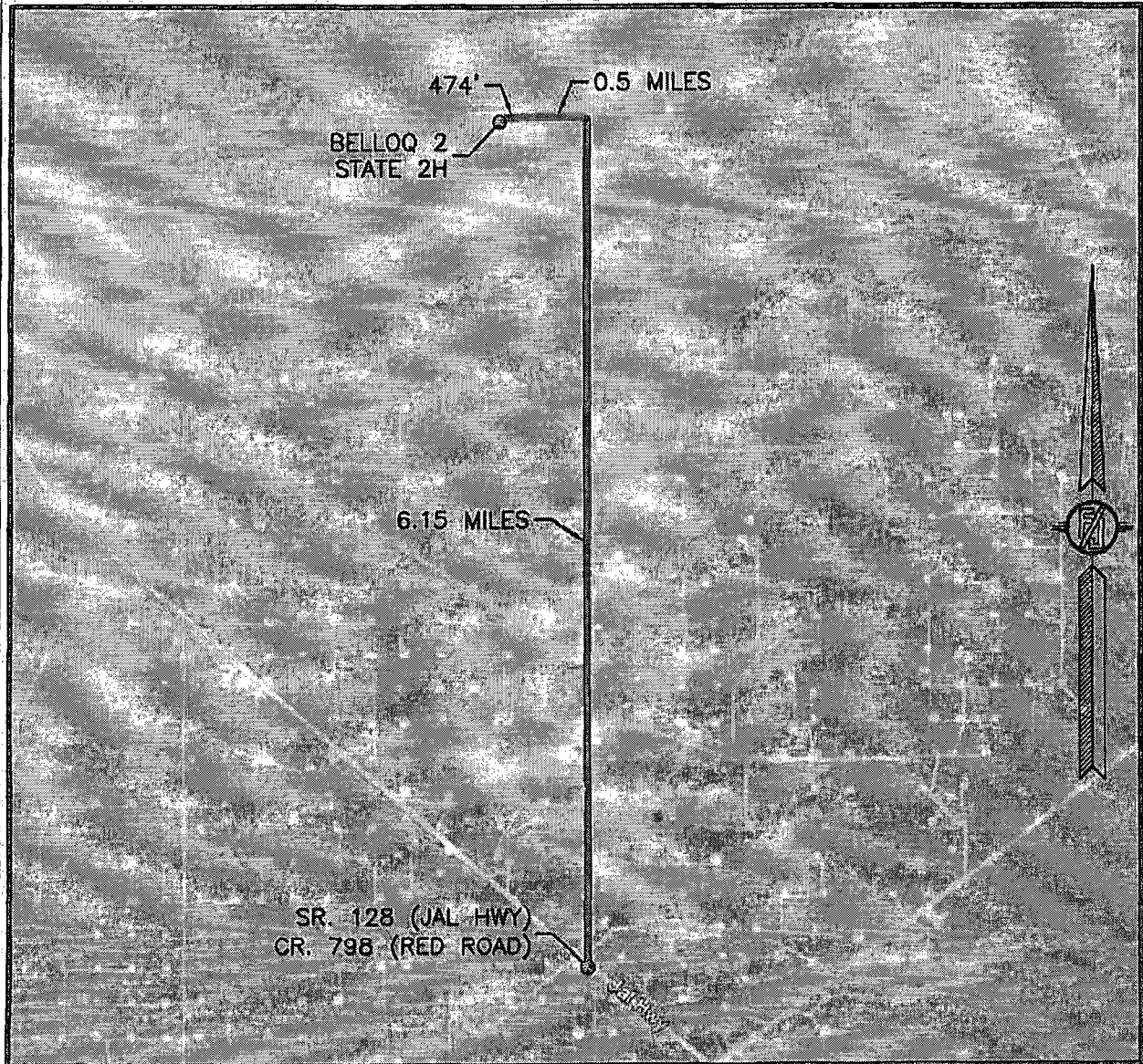
DECEMBER 12, 2014

SURVEY NO. 3420

MADRON SURVEYING, INC. 301 SOUTH CANAL (575) 234-3341 CARLSBAD, NEW MEXICO



SECTION 2, TOWNSHIP 23 SOUTH, RANGE 31 EAST, N.M.P.M.  
EDDY COUNTY, STATE OF NEW MEXICO  
AERIAL ACCESS ROUTE MAP



NOT TO SCALE  
AERIAL PHOTO:  
GOOGLE EARTH  
FEB. 2014

DEVON ENERGY PRODUCTION COMPANY, L.P.  
BELLOQ 2 STATE 2H

LOCATED 200 FT. FROM THE NORTH LINE  
AND 1720 FT. FROM THE WEST LINE OF  
SECTION 2, TOWNSHIP 23 SOUTH,  
RANGE 31 EAST, N.M.P.M.  
EDDY COUNTY, STATE OF NEW MEXICO

DECEMBER 12, 2014

SURVEY NO. 3420

MADRON SURVEYING, INC. 301 SOUTH CANAL (575) 234-3341 CARLSBAD, NEW MEXICO