

15-4194

NM OIL CONSERVATION  
ARTESIA DISTRICT

MAR 02 2015

RECEIVED

# OCCIDENTAL PERMIAN LTD.

Pierce Crossing Bone Spring, East  
Eddy County, NM  
Cedar Canyon 23 #2H  
DH - Job #320814-MPH-1024

Survey: MWD

## SDI Survey Report

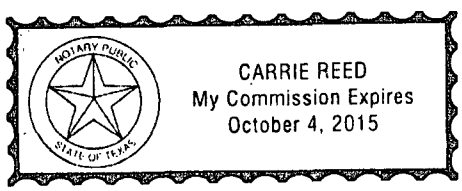
This survey is correct to the best of my knowledge and is supported by actual field data.

*[Signature]*

Notarized this date 27th of October, 2014.

*Carrie Reed*

Notary Signature  
County of Midland  
State of Texas



**SDI**  
SDI Survey Report

<b>Company:</b>	OCCIDENTAL PERMIAN LTD.	<b>Local Co-ordinate Reference:</b>	Well Cedar Canyon 23 #2H
<b>Project:</b>	Pierce Crossing Bone Spring, East	<b>TVD Reference:</b>	Mean Sea Level (System)
<b>Site:</b>	Eddy County, NM	<b>MD Reference:</b>	Mean Sea Level (System)
<b>Well:</b>	Cedar Canyon 23 #2H	<b>North Reference:</b>	Grid
<b>Wellbore:</b>	DH - Job #320814-MPH-1024	<b>Survey Calculation Method:</b>	Minimum Curvature
<b>Design:</b>	DH - Job #320814-MPH-1024	<b>Database:</b>	EDM-Regulatory

<b>Project</b>	Pierce Crossing Bone Spring, East		
<b>Map System:</b>	US State Plane 1927 (Exact solution)	<b>System Datum:</b>	Mean Sea Level
<b>Geo Datum:</b>	NAD 1927 (NADCON CONUS)		
<b>Map Zone:</b>	New Mexico East 3001		

<b>Site</b>	Eddy County, NM				
<b>Site Position:</b>	<b>Northing:</b>	445,863.68 usft	<b>Latitude:</b>	32° 13' 31.114 N	
<b>From:</b>	Lat/Long	<b>Easting:</b>	608,483.24 usft	<b>Longitude:</b>	103° 58' 57.079 W
<b>Position Uncertainty:</b>	0.0 usft	<b>Slot Radius:</b>	13-3/16"	<b>Grid Convergence:</b>	0.19 °

<b>Well</b>	Cedar Canyon 23 #2H, Horizontal					
<b>Well Position</b>	<b>+N-S</b>	0.0 usft	<b>Northing:</b>	435,728.87 usft	<b>Latitude:</b>	32° 11' 50.597 N
	<b>+E-W</b>	0.0 usft	<b>Easting:</b>	615,130.46 usft	<b>Longitude:</b>	103° 57' 40.104 W
<b>Position Uncertainty</b>		0.0 usft	<b>Wellhead Elevation:</b>	0.0 usft	<b>Ground Level:</b>	0.0 usft

<b>Wellbore</b>	DH - Job #320814-MPH-1024				
<b>Magnetics</b>	<b>Model Name</b>	<b>Sample Date</b>	<b>Declination (°)</b>	<b>Dip Angle (°)</b>	<b>Field Strength (nT)</b>
	IGRF2010	8/18/2014	7.38	60.02	48,266

<b>Design</b>	DH - Job #320814-MPH-1024				
<b>Audit Notes:</b>					
<b>Version:</b>	1.0	<b>Phase:</b>	ACTUAL	<b>Tie On Depth:</b>	0.0
<b>Vertical Section:</b>	<b>Depth From (TVD) (usft)</b>	<b>+N-S (usft)</b>	<b>+E-W (usft)</b>	<b>Direction (°)</b>	
	0.0	0.0	0.0	89.43	

<b>Survey Program</b>	Date 10/21/2014				
<b>From (usft)</b>	<b>To (usft)</b>	<b>Survey (Wellbore)</b>	<b>Tool Name</b>	<b>Description</b>	
499.0	13,430.0	MWD (DH - Job #320814-MPH-1024)	MWD	MWD	

<b>Survey</b>									
<b>MD (usft)</b>	<b>Inc (°)</b>	<b>Azi (azimuth) (°)</b>	<b>TVD (usft)</b>	<b>N/S (usft)</b>	<b>E/W (usft)</b>	<b>Closure Azimuth (°)</b>	<b>Closure Distance (usft)</b>		
0.0	0.00	0.00	0.0	0.0	0.0	0.00	0.0		
499.0	0.44	89.09	499.0	0.0	1.9	89.09	1.9		
603.0	0.35	91.02	603.0	0.0	2.6	89.32	2.6		
696.0	0.44	129.34	696.0	-0.2	3.2	93.59	3.2		
789.0	0.35	96.03	789.0	-0.5	3.8	96.94	3.8		
882.0	0.62	139.89	882.0	-0.9	4.4	101.30	4.4		
974.0	0.53	121.87	974.0	-1.5	5.0	106.33	5.3		
1,069.0	0.44	146.74	1,069.0	-2.0	5.6	109.73	6.0		
1,163.0	0.62	173.99	1,163.0	-2.8	5.9	115.69	6.5		
1,258.0	0.79	199.48	1,258.0	-3.9	5.7	124.72	6.9		
1,352.0	0.79	215.12	1,352.0	-5.1	5.1	134.89	7.2		
1,447.0	1.14	194.64	1,446.9	-6.5	4.5	145.50	7.9		

**SDI**  
SDI Survey Report

<b>Company:</b>	OCCIDENTAL PERMIAN LTD.	<b>Local Co-ordinate Reference:</b>	Well Cedar Canyon 23 #2H
<b>Project:</b>	Pierce Crossing Bone Spring, East	<b>TVD Reference:</b>	Mean Sea Level (System)
<b>Site:</b>	Eddy County, NM	<b>MD Reference:</b>	Mean Sea Level (System)
<b>Well:</b>	Cedar Canyon 23 #2H	<b>North Reference:</b>	Grid
<b>Wellbore:</b>	DH - Job #320814-MPH-1024	<b>Survey Calculation Method:</b>	Minimum Curvature
<b>Design:</b>	DH - Job #320814-MPH-1024	<b>Database:</b>	EDM-Regulatory

Survey								
MD (usft)	Inc (°)	Azi (azimuth) (°)	TVD (usft)	N/S (usft)	E/W (usft)	Closure Azimuth (°)	Closure Distance (usft)	
1,541.0	0.79	188.23	1,540.9	-8.1	4.2	152.74	9.1	
1,635.0	0.79	211.78	1,634.9	-9.3	3.7	158.09	10.0	
1,730.0	1.06	207.30	1,729.9	-10.6	3.0	164.30	11.0	
1,824.0	1.06	202.55	1,823.9	-12.2	2.3	169.53	12.4	
1,919.0	0.97	193.50	1,918.9	-13.8	1.7	172.86	13.9	
2,013.0	0.88	187.00	2,012.9	-15.3	1.5	174.56	15.3	
2,108.0	0.53	182.51	2,107.9	-16.4	1.3	175.32	16.5	
2,202.0	0.88	199.13	2,201.9	-17.6	1.1	176.45	17.6	
2,297.0	0.70	156.67	2,296.8	-18.8	1.1	176.71	18.8	
2,391.0	1.23	136.46	2,390.8	-20.0	2.0	174.29	20.1	
2,486.0	1.41	137.78	2,485.8	-21.6	3.5	170.84	21.9	
2,580.0	1.41	128.11	2,579.8	-23.2	5.2	167.42	23.8	
2,675.0	1.93	124.16	2,674.7	-24.8	7.4	163.36	25.9	
2,769.0	1.67	139.71	2,768.7	-26.8	9.6	160.24	28.4	
2,864.0	1.41	133.30	2,863.7	-28.6	11.4	158.35	30.8	
2,958.0	1.49	121.61	2,957.6	-30.1	13.2	156.22	32.8	
3,049.0	1.23	144.28	3,048.6	-31.5	14.8	154.78	34.8	
3,144.0	1.14	131.01	3,143.6	-32.9	16.1	153.89	36.7	
3,238.0	1.23	138.22	3,237.6	-34.3	17.5	152.94	38.5	
3,333.0	1.32	285.17	3,332.6	-34.8	17.1	153.76	38.7	
3,427.0	3.25	287.63	3,426.5	-33.7	13.5	158.08	36.3	
3,522.0	5.36	284.03	3,521.2	-31.8	6.7	168.13	32.5	
3,616.0	6.60	286.14	3,614.7	-29.2	-2.8	185.42	29.3	
3,711.0	6.24	285.79	3,709.1	-26.3	-13.0	206.29	29.3	
3,805.0	6.16	285.61	3,802.5	-23.5	-22.8	224.04	32.7	
3,899.0	5.89	284.56	3,896.0	-21.0	-32.3	237.00	38.5	
3,994.0	5.63	284.73	3,990.5	-18.6	-41.5	245.91	45.5	
4,088.0	6.42	283.94	4,084.0	-16.1	-51.1	252.48	53.6	
4,183.0	6.42	283.59	4,178.4	-13.6	-61.4	257.51	62.9	
4,277.0	6.51	284.12	4,271.8	-11.1	-71.7	261.23	72.5	
4,372.0	6.24	283.68	4,366.2	-8.5	-81.9	264.06	82.3	
4,466.0	6.33	281.74	4,459.7	-6.3	-91.9	266.10	92.2	
4,561.0	6.42	281.39	4,554.1	-4.1	-102.3	267.68	102.4	
4,655.0	6.24	281.66	4,647.5	-2.1	-112.4	268.94	112.4	
4,749.0	6.33	280.69	4,740.9	-0.1	-122.5	269.96	122.5	
4,844.0	6.33	281.48	4,835.4	1.9	-132.8	270.83	132.8	
4,938.0	6.33	280.51	4,928.8	3.9	-143.0	271.57	143.0	
5,033.0	6.16	281.74	5,023.2	5.9	-153.1	272.21	153.2	
5,127.0	6.07	283.15	5,116.7	8.1	-162.9	272.83	163.1	
5,222.0	5.72	280.95	5,211.2	10.1	-172.4	273.35	172.7	
5,316.0	5.36	282.27	5,304.8	11.9	-181.3	273.76	181.7	
5,411.0	6.24	278.14	5,399.3	13.6	-190.8	274.08	191.3	
5,505.0	6.07	278.67	5,492.7	15.1	-200.7	274.29	201.3	
5,600.0	5.63	274.98	5,587.2	16.2	-210.3	274.41	211.0	

**SDI**  
SDI Survey Report

<b>Company:</b>	OCCIDENTAL PERMIAN LTD.	<b>Local Co-ordinate Reference:</b>	Well Cedar Canyon 23 #2H
<b>Project:</b>	Pierce Crossing Bone Spring, East	<b>TVD Reference:</b>	Mean Sea Level (System)
<b>Site:</b>	Eddy County, NM	<b>MD Reference:</b>	Mean Sea Level (System)
<b>Well:</b>	Cedar Canyon 23 #2H	<b>North Reference:</b>	Grid
<b>Wellbore:</b>	DH - Job #320814-MPH-1024	<b>Survey Calculation Method:</b>	Minimum Curvature
<b>Design:</b>	DH - Job #320814-MPH-1024	<b>Database:</b>	EDM-Regulatory

Survey								
MD (usft)	Inc (°)	Azi (azimuth) (°)	TVD (usft)	N/S (usft)	E/W (usft)	Closure Azimuth (°)	Closure Distance (usft)	
5,694.0	6.51	271.64	5,680.7	16.8	-220.3	274.36	220.9	
5,788.0	6.16	271.28	5,774.1	17.0	-230.6	274.23	231.3	
5,883.0	5.72	270.58	5,868.6	17.2	-240.5	274.09	241.1	
5,977.0	5.36	269.88	5,962.2	17.2	-249.5	273.95	250.1	
6,072.0	5.80	273.57	6,056.7	17.5	-258.8	273.88	259.4	
6,166.0	6.60	272.51	6,150.2	18.1	-268.9	273.84	269.5	
6,261.0	6.33	272.51	6,244.6	18.5	-279.6	273.79	280.2	
6,355.0	5.89	270.41	6,338.0	18.8	-289.6	273.71	290.2	
6,450.0	6.16	270.76	6,432.5	18.9	-299.6	273.61	300.2	
6,544.0	6.24	270.41	6,526.0	19.0	-309.7	273.51	310.3	
6,638.0	5.72	268.91	6,619.5	19.0	-319.5	273.39	320.1	
6,733.0	5.28	267.51	6,714.0	18.7	-328.6	273.25	329.1	
6,827.0	4.66	267.33	6,807.7	18.3	-336.7	273.11	337.2	
6,922.0	4.66	264.96	6,902.4	17.8	-344.4	272.96	344.9	
7,016.0	3.25	268.74	6,996.1	17.4	-350.9	272.84	351.3	
7,111.0	2.11	257.75	7,091.0	17.0	-355.3	272.73	355.7	
7,205.0	0.44	275.33	7,185.0	16.6	-357.4	272.66	357.7	
7,300.0	0.53	249.31	7,280.0	16.5	-358.1	272.64	358.5	
7,394.0	1.32	207.65	7,374.0	15.4	-359.0	272.46	359.4	
7,489.0	2.11	176.78	7,468.9	12.7	-359.5	272.02	359.7	
7,583.0	0.44	216.70	7,562.9	10.7	-359.6	271.70	359.7	
7,678.0	0.62	265.57	7,657.9	10.3	-360.3	271.64	360.4	
7,773.0	0.35	250.98	7,752.9	10.2	-361.1	271.62	361.2	
7,867.0	0.53	262.06	7,846.9	10.0	-361.8	271.59	361.9	
7,962.0	0.70	256.34	7,941.9	9.8	-362.8	271.55	362.9	
7,991.0	0.70	271.72	7,970.9	9.8	-363.1	271.55	363.3	
8,086.0	1.41	271.72	8,065.9	9.9	-364.9	271.55	365.0	
8,181.0	1.93	274.01	8,160.8	10.0	-367.7	271.56	367.8	
8,275.0	1.14	107.02	8,254.8	9.8	-368.3	271.53	368.5	
8,370.0	9.23	93.83	8,349.4	9.1	-359.8	271.44	359.9	
8,464.0	17.67	83.37	8,440.7	10.2	-338.1	271.73	338.2	
8,559.0	28.23	83.11	8,528.1	14.6	-301.4	272.77	301.7	
8,654.0	40.36	85.40	8,606.4	19.8	-248.2	274.55	249.0	
8,685.0	44.32	85.66	8,629.3	21.4	-227.4	275.37	228.4	
8,717.0	48.28	85.84	8,651.4	23.1	-204.3	276.45	205.6	
8,749.0	51.18	86.36	8,672.1	24.8	-179.9	277.83	181.6	
8,780.0	54.52	86.54	8,690.8	26.3	-155.3	279.61	157.5	
8,812.0	57.68	86.89	8,708.7	27.8	-128.8	282.18	131.7	
8,844.0	59.79	86.89	8,725.3	29.3	-101.5	286.10	105.6	
8,875.0	62.43	86.98	8,740.2	30.7	-74.4	292.46	80.5	
8,907.0	64.89	87.33	8,754.4	32.2	-45.7	305.12	55.9	
8,939.0	66.57	88.03	8,767.6	33.3	-16.6	333.57	37.2	
8,970.0	68.06	88.91	8,779.6	34.1	12.0	19.41	36.2	
9,002.0	70.00	89.35	8,791.0	34.6	41.9	50.48	54.3	

**SDI**  
SDI Survey Report

<b>Company:</b>	OCCIDENTAL PERMIAN LTD.	<b>Local Co-ordinate Reference:</b>	Well Cedar Canyon 23 #2H
<b>Project:</b>	Pierce Crossing Bone Spring, East	<b>TVD Reference:</b>	Mean Sea Level (System)
<b>Site:</b>	Eddy County, NM	<b>MD Reference:</b>	Mean Sea Level (System)
<b>Well:</b>	Cedar Canyon 23 #2H	<b>North Reference:</b>	Grid
<b>Wellbore:</b>	DH - Job #320814-MPH-1024	<b>Survey Calculation Method:</b>	Minimum Curvature
<b>Design:</b>	DH - Job #320814-MPH-1024	<b>Database:</b>	EDM-Regulatory

Survey								
MD (usft)	Inc (°)	Azi (azimuth) (°)	TVD (usft)	N/S (usft)	E/W (usft)	Closure Azimuth (°)	Closure Distance (usft)	
9,033.0	72.81	89.88	8,800.9	34.8	71.3	64.00	79.3	
9,065.0	74.66	90.14	8,809.9	34.7	102.0	71.19	107.7	
9,096.0	76.50	90.32	8,817.6	34.6	132.0	75.30	136.5	
9,127.0	78.26	90.93	8,824.3	34.3	162.3	78.06	165.8	
9,159.0	79.67	91.46	8,830.5	33.6	193.7	80.15	196.6	
9,191.0	81.34	91.64	8,835.7	32.8	225.2	81.72	227.6	
9,222.0	83.01	92.16	8,840.0	31.8	255.9	82.92	257.9	
9,254.0	85.21	92.69	8,843.3	30.4	287.7	83.96	289.3	
9,285.0	87.41	93.48	8,845.2	28.8	318.6	84.84	319.9	
9,317.0	88.72	94.01	8,846.3	26.7	350.5	85.65	351.5	
9,348.0	88.99	93.75	8,846.9	24.6	381.4	86.31	382.2	
9,380.0	88.99	93.75	8,847.5	22.5	413.3	86.89	414.0	
9,411.0	89.08	92.69	8,848.0	20.7	444.3	87.33	444.8	
9,505.0	90.04	91.37	8,848.8	17.4	538.2	88.15	538.5	
9,600.0	89.78	91.90	8,848.9	14.7	633.2	88.67	633.4	
9,695.0	89.16	92.08	8,849.8	11.4	728.1	89.10	728.2	
9,789.0	89.16	91.37	8,851.2	8.6	822.1	89.40	822.1	
9,884.0	88.37	91.55	8,853.2	6.1	917.0	89.62	917.0	
9,978.0	87.85	91.11	8,856.3	4.0	1,010.9	89.78	1,011.0	
10,073.0	90.31	88.38	8,857.8	4.4	1,105.9	89.77	1,105.9	
10,167.0	89.96	87.86	8,857.6	7.5	1,199.9	89.64	1,199.9	
10,262.0	89.87	87.94	8,857.8	11.0	1,294.8	89.52	1,294.8	
10,356.0	88.37	87.07	8,859.2	15.0	1,388.7	89.38	1,388.8	
10,451.0	88.29	86.54	8,862.0	20.3	1,483.5	89.21	1,483.6	
10,545.0	88.55	86.63	8,864.6	25.9	1,577.3	89.06	1,577.5	
10,640.0	88.64	87.94	8,866.9	30.4	1,672.2	88.96	1,672.4	
10,734.0	88.64	88.30	8,869.1	33.5	1,766.1	88.91	1,766.4	
10,829.0	88.99	90.84	8,871.1	34.2	1,861.1	88.95	1,861.4	
10,923.0	89.25	91.20	8,872.5	32.6	1,955.0	89.05	1,955.3	
11,018.0	89.25	91.37	8,873.8	30.4	2,050.0	89.15	2,050.2	
11,112.0	88.90	90.93	8,875.3	28.5	2,144.0	89.24	2,144.2	
11,207.0	88.72	90.23	8,877.3	27.6	2,238.9	89.29	2,239.1	
11,301.0	88.37	90.23	8,879.6	27.2	2,332.9	89.33	2,333.1	
11,396.0	88.90	91.90	8,881.9	25.4	2,427.9	89.40	2,428.0	
11,490.0	89.25	91.90	8,883.4	22.3	2,521.8	89.49	2,521.9	
11,585.0	89.34	90.93	8,884.6	20.0	2,616.8	89.56	2,616.8	
11,679.0	89.43	90.84	8,885.6	18.5	2,710.7	89.61	2,710.8	
11,774.0	89.25	89.79	8,886.7	18.0	2,805.7	89.63	2,805.8	
11,868.0	89.25	90.84	8,887.9	17.5	2,899.7	89.65	2,899.8	
11,963.0	89.16	91.64	8,889.3	15.4	2,994.7	89.70	2,994.7	
12,057.0	89.08	90.67	8,890.7	13.5	3,088.7	89.75	3,088.7	
12,152.0	88.81	85.75	8,892.4	16.5	3,183.6	89.70	3,183.6	
12,246.0	89.43	86.98	8,893.9	22.5	3,277.4	89.61	3,277.4	
12,341.0	89.69	88.30	8,894.6	26.4	3,372.3	89.55	3,372.4	
12,435.0	90.04	88.65	8,894.8	28.9	3,466.3	89.52	3,466.4	

**SDI**  
SDI Survey Report

<b>Company:</b>	OCCIDENTAL PERMIAN LTD.	<b>Local Co-ordinate Reference:</b>	Well Cedar Canyon 23 #2H
<b>Project:</b>	Pierce Crossing Bone Spring, East	<b>TVD Reference:</b>	Mean Sea Level (System)
<b>Site:</b>	Eddy County, NM	<b>MD Reference:</b>	Mean Sea Level (System)
<b>Well:</b>	Cedar Canyon 23 #2H	<b>North Reference:</b>	Grid
<b>Wellbore:</b>	DH - Job #320814-MPH-1024	<b>Survey Calculation Method:</b>	Minimum Curvature
<b>Design:</b>	DH - Job #320814-MPH-1024	<b>Database:</b>	EDM-Regulatory

Survey								
MD (usft)	Inc (°)	Azi (azimuth) (°)	TVD (usft)	N/S (usft)	E/W (usft)	Closure Azimuth (°)	Closure Distance (usft)	
12,530.0	89.60	87.59	8,895.1	32.0	3,561.2	89.49	3,561.3	
12,624.0	89.69	87.24	8,895.7	36.2	3,655.1	89.43	3,655.3	
12,719.0	89.69	87.68	8,896.2	40.4	3,750.0	89.38	3,750.2	
12,814.0	89.78	87.59	8,896.7	44.4	3,844.9	89.34	3,845.2	
12,908.0	89.25	87.07	8,897.5	48.7	3,938.8	89.29	3,939.1	
13,003.0	89.34	86.63	8,898.6	54.0	4,033.7	89.23	4,034.0	
13,097.0	89.69	88.12	8,899.4	58.3	4,127.6	89.19	4,128.0	
13,192.0	89.69	87.59	8,899.9	61.8	4,222.5	89.16	4,222.9	
13,286.0	89.34	87.15	8,900.7	66.1	4,316.4	89.12	4,316.9	
13,371.0	89.52	86.01	8,901.6	71.2	4,401.2	89.07	4,401.8	
<b>Last MWD Survey</b>								
13,430.0	89.52	86.01	8,902.1	75.3	4,460.1	89.03	4,460.7	
<b>Projection to Bit</b>								

Survey Annotations					
Measured Depth (usft)	Vertical Depth (usft)	Local Coordinates		Comment	
		+N-S (usft)	+E-W (usft)		
13,371.0	8,901.6	71.2	4,401.2	Last MWD Survey	
13,430.0	8,902.1	75.3	4,460.1	Projection to Bit	



KB @ 2951.0usft (H&P 474)  
Gr: 2927.0

**Cedar Canyon 23 2H**  
**Eddy County, NM (NAD 27 NME)**  
**Northing: 435701.40**  
**Easting: 615130.60**  
**Design #4**

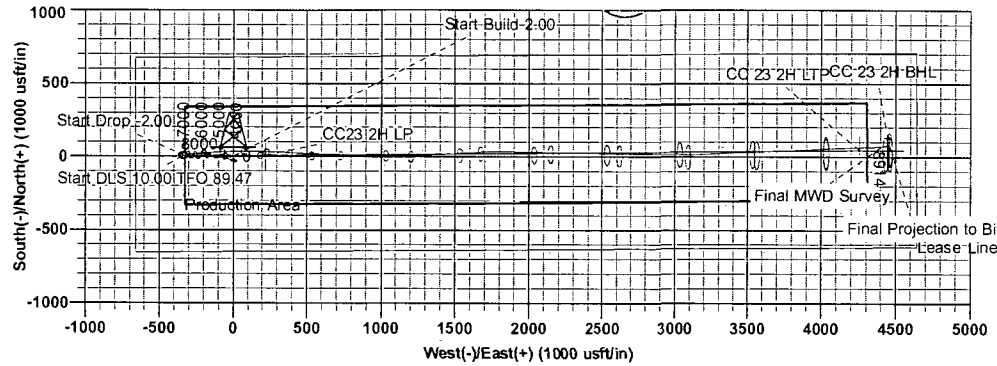
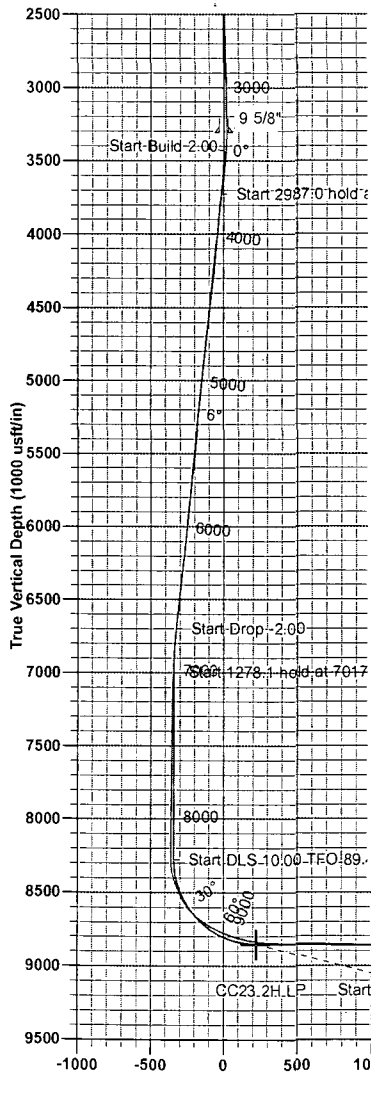


Start 5789.1 hold at 10732.7 MD



Azimuths to Grid North  
True North: -0.20°  
Magnetic North: 7.35°

TD at 16672.0d at 16521.9 MD Field  
Strength: 44386.5snT  
Dip Angle: 60.05°  
Date: 3/14/2013  
Model: IGRF2010



DESIGN TARGET DETAILS						
Name	TVD	+N/-S	+E/-W	Northing	Easting	Latitude Longitude
CC23 2H LP	8851.0	5.2	220.8	435706.60	615351.39	32° 11' 50.369 N 103° 57' 37.534 W
CC 23 2H LTP	8911.0	42.4	4260.3	435743.80	619390.90	32° 11' 50.596 N 103° 56' 50.521 W
CC 23 2H BHL	8914.0	44.2	4460.3	435745.64	619590.87	32° 11' 50.607 N 103° 56' 48.194 W

WELL DETAILS Cedar Canyon 23 2H					
		Ground Level: 2927.0			
+N/-S	+E/-W	Northing	Easting	Latitude	Longitude
0.0	0.0	435701.40	615130.60	32° 11' 50.325 N	103° 57' 40.103 W

SECTION DETAILS									
MD	Inc	Azi	TVD	+N/-S	+E/-W	Dleg	TFace	Vsect	Target
0.0	0.00	0.00	0.0	0.0	0.0	0.0	0.00	0.00	0.0
3430.0	0.00	0.00	3430.0	0.0	0.0	0.0	0.00	0.00	0.0
3730.0	6.00	270.00	3729.5	0.0	-15.7	2.00	270.00	-15.7	
6717.0	6.00	270.00	6700.1	0.0	-327.9	0.00	0.00	-327.9	
7017.5	0.00	0.00	7000.0	0.0	-343.6	2.00	180.00	-343.6	
8295.6	0.00	0.00	8278.1	0.0	-343.6	0.00	0.00	-343.6	
9187.1	89.15	89.47	8851.0	5.2	220.8	10.00	89.47	220.8	CC 23 2H LTP
13227.2	89.15	89.47	8911.0	42.4	4260.3	0.00	0.00	4260.5	CC 23 2H BHL
13427.2	89.15	89.47	8914.0	44.2	4460.3	0.00	0.00	4460.5	

SITE DETAILS:	
Cedar Canyon 23 2H	
Site Centre Northing:	435701.40
Easting:	615130.60
Positional Uncertainty:	0.0
Convergence:	0.20
Local North:	Grid

PROJECT DETAILS:	
Eddy County, NM (NAD 27 NME)	
Geodetic System: US State Plane 1927 (Exact solution)	
Datum: NAD 1927 (NADCON CONUS)	
Ellipsoid: Clarke 1866	
Zone: New Mexico East 3001	
System Datum: Mean Sea Level	

CASING DETAILS		
TVD	MD	Size
435.0	435.0	13-5/8
3310.0	310.0	9-5/8
8914.0	1327.2	5-1/2

Judge Fletcher  
14:51, September 02 2014

Scientific Drilling Int'l  
633 Rankin Cir  
Houston, Tx 77073

OXY USA INC.  
Cedar Canyon 23 Com. 2H  
API No. 30-015-41194

NM OIL CONSERVATION  
ARTESIA DISTRICT

MAR 02 2015

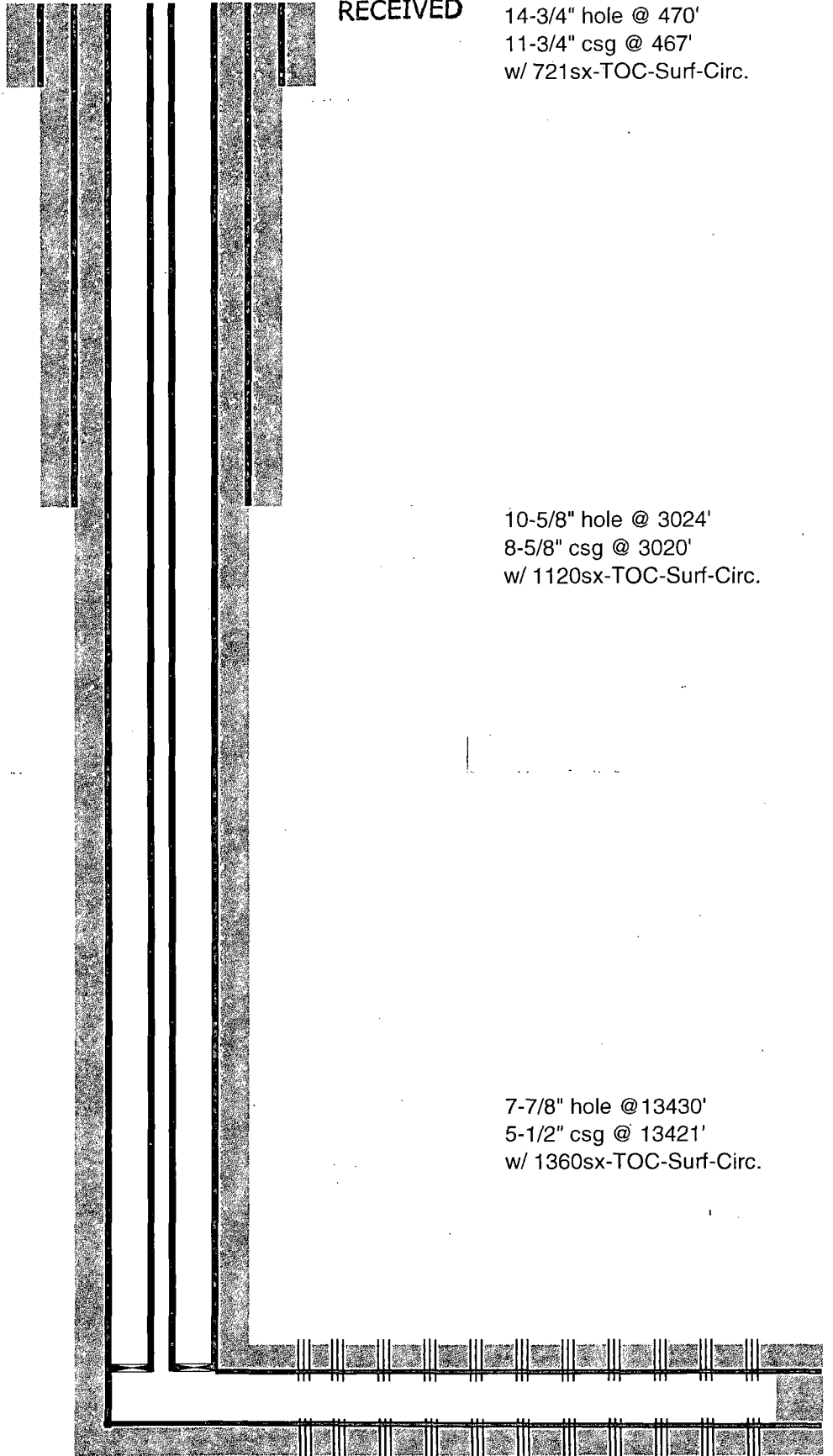
RECEIVED

14-3/4" hole @ 470'  
11-3/4" csg @ 467'  
w/ 721sx-TOC-Surf-Circ.

10-5/8" hole @ 3024'  
8-5/8" csg @ 3020'  
w/ 1120sx-TOC-Surf-Circ.

7-7/8" hole @ 13430'  
5-1/2" csg @ 13421'  
w/ 1360sx-TOC-Surf-Circ.

2-7/8" tbg & pkr @ 8300'



Perfs @ 9195-13220'

TD- 13430'M 8902'V