

Submit 3 Copies To Appropriate District Office
District I
1625 N. French Dr., Hobbs, NM 88240
District II
1301 W. Grand Ave., Artesia, NM 88210
District III
1000 Rio Brazos Rd., Aztec, NM 87410
District IV
1220 S. St. Francis Dr., Santa Fe, NM 87505

State of New Mexico

Energy, Minerals and Natural Resources

NM OIL CONSERVATION

ARTESIA DISTRICT

OIL CONSERVATION DIVISION

MAR 04 2015

1220 South St. Francis Dr.

Santa Fe, NM 87505

RECEIVED

Form C-103

May 27, 2004

WELL API NO.

30-015-10235

5. Indicate Type of Lease

STATE ☒ FEE ☐

6. State Oil & Gas Lease No.

7. Lease Name or Unit Agreement Name
EASTLAND QUEEN UNIT

8. Well Number 17

9. OGRID Number

1903

10. Pool name or Wildcat
TURKEY TRACK; 7RVRS-QU-GB-SA

SUNDRY NOTICES AND REPORTS ON WELLS

(DO NOT USE THIS FORM FOR PROPOSALS TO DRILL OR TO DEEPEN OR PLUG BACK TO A DIFFERENT RESERVOIR. USE "APPLICATION FOR PERMIT" (FORM C-101) FOR SUCH PROPOSALS.)

1. Type of Well: Oil Well ☐ Gas Well ☐ Other ☒ INJECTION

2. Name of Operator

BEACH EXPLORATION, INC.

3. Address of Operator

800 NORTH MARIENFELD, SUITE 200, MIDLAND, TX 79701

4. Well Location

Unit Letter K; 1,470 feet from the SOUTH line and 2,420 feet from the WEST line

Section 1 Township 19S Range 29E NMPM EDDY County

11. Elevation (Show whether DR, RKB, RT, GR, etc.)

RKB 3418

Pit or Below-grade Tank Application ☐ or Closure ☐

Pit type _____ Depth to Groundwater _____ Distance from nearest fresh water well _____ Distance from nearest surface water _____

Pit Liner Thickness: _____ mil Below-Grade Tank: Volume _____ bbls; Construction Material _____

12. Check Appropriate Box to Indicate Nature of Notice, Report or Other Data

NOTICE OF INTENTION TO:

PERFORM REMEDIAL WORK ☐ PLUG AND ABANDON ☐

TEMPORARILY ABANDON ☐ CHANGE PLANS ☐

PULL OR ALTER CASING ☐ MULTIPLE COMPLETIONS ☐

OTHER: ☐

SUBSEQUENT REPORT OF:

REMEDIAL WORK ☐ ALTERING CASING ☐

COMMENCE DRILLING OPS ☐ P AND A ☒

CASING/CEMENT JOB ☐

OTHER: ☐

13. Describe proposed or completed operations. (Clearly state all pertinent details, and give pertinent dates, including estimated date of starting any proposed work). SEE RULE 1103. For Multiple Completions: Attach wellbore diagram of proposed completion or recompletion.

Procedure:

1/15/15 - Maverick MI and RU. ND wellhead. NU BOP. Pulled and laid down 54 jts 2 3/8" fiberglass lined injection tubing.

1/16/15 - Finished laying down total of 73 jts FG lined tb. PU 2 3/8 Maverick tb. w/perf sub. Tagged PBTD at 2330'.

1/21/15 - Mixed and circulated well w/9.5 ppg salt get. POOH to 1546. Mixed and pumped 25sx Class C cmt plug. PUH.

1/23/15 - RIH and tagged cmt at 1062' (484' plug). ND BOP & Wellhead to get ready to cut 4 1/2" csg.

1/26/15 - RU WL. RIH and cut 4 1/2" csg at 415'. POOH w/WL. Pulled 9 jts and cutoff 4 1/2" csg. RIH w/2 3/8" tb. to 465'

Mixed and pumped 60 sx Class C cmt displ to 315'. POOH and SD for day.

1/27/15 - RIH Tagged cmt at 375'. Mixed and pumped 185 sx Class C cmt from 370'. POOH. WOC 4 hrs. RIH tagged at 365'.

1/28/15 - Mixed and pumped 190 sx Class C cmt from 365'. POOH. SD for day.

1/29/15 - RIH and tagged cmt at 191'. Mixed and pumped 90 sx Class C cmt from 191' and cmt circulated to surf. POOH.

RD. Cut off 8 5/8" csg 3' below ground and installed required 4" dry hole marker 4' above ground with required well and loc information stenciled on pipe.

I hereby certify that the information above is true and complete to the best of my knowledge and belief. I further certify that any pit or below-grade tank has been/will be constructed or closed according to NMOC guidelines ☐, a general permit ☐ or an (attached) alternative OCD-approved plan ☐.

SIGNATURE Jack M. Rose TITLE: Engineer DATE: February 9th, 2015

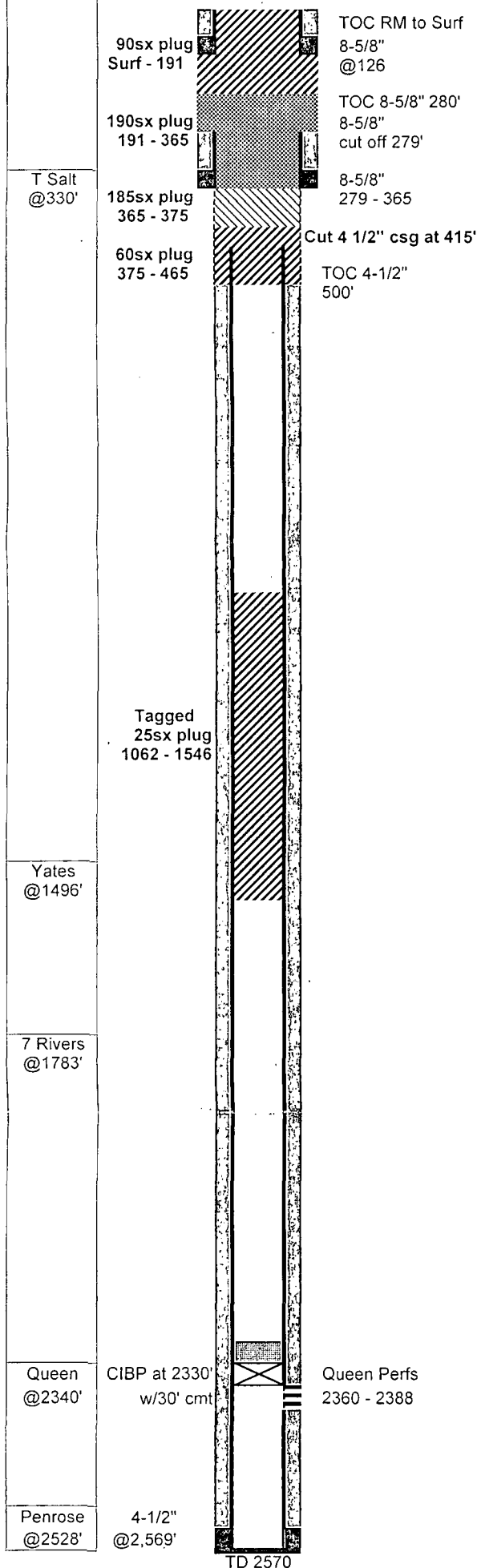
Type or print name: Jack M. Rose E-mail address: bmartin@beachexp.com Telephone No. (432) 683-6226

For State Use Only

APPROVED BY: [Signature] TITLE: Dist. Engineer DATE: 3/19/15

Conditions of Approval (if any):

Submit Subsequent C-103



EQU #17 (P.J. State A #9) P&A 1/29/15

GL: 3,412	Status: TA'd Injector
KB: 3,418	Perfs: Queen 2360 - 2388
TD: 2,570	
PBD: 2516, 2305	API: 30-015-10235-0001
Fr. Wtr: Legal: 1,470 from S	NM Lse: 036974
2,420 from W	Field: Turkey Track (Sr-Qn-Gb-Sa)
Section: 1-K	Logs: CNL, LDL, DLL
Township: 19S	Archeological:
Range: 29E	
County: Eddy	

Casing	Wt	Type	Set	Cmt	Hole	TOC	Method	S(ft ³)
8-5/8"	28.00	used	365	50	10"	280	279' csg pulled	
8-5/8"			126	RM10yd	9-7/8"	Surf	filled backside	
7"			350	0	7-7/8"	csg run - pulled after 4-1/2"		
4-1/2"	10.5		2,569	500	6-1/4"	500'	Temp Surv	

1-Nov-63	Spud well
	Kersey & Co. - Leonard #1
29-Dec-63	D&A to 2570 - set 8-5/8" csg at 365', dird to 2570' w/8-1/4" bit 25 sx plug at 2570', 20 sx plug at 1173' Base of salt, 20 sx plug at 365' csg shoe 20sx plug at 365' surf csg shoe plug, mud between plugs recovered 278.8' surf csg, mudded to surf and set 4" marker at surf Reenter P&A well to 2570
28-Jun-89	Fred Pool - P.J. State A #9 CO to 162' w/ 9-7/8" bit, ran 126' 8-5/8" csg cmted w/10yds of ready mix to surf CO to 350' w/7-7/8" bit and ran 350' 7" csg as a temporary conductor string Drilled w/ 6-1/4" bit plugs at 365', 1173' and went to 2570' CO to 2570' w/6-1/4" bit, ran 4-1/2" csg 2569', pulled 7" csg. cmt'd 4-1/2" csg
11-Jul-89	Queen Completion Perf 2360-2388 12 holes 0.38" acidized w/1500 gal 15% HCL frac w/28Mgal gel wtr, 21.6M# 20/40, 35.6M# 12/20
15-Jul-89	IP: Pumping 22 BO 42 BW 10 MCF 24 hrs 32 API 454 GOR Recondition to Queen flood producer
23-Sep-08	Pulled rods and pump and tbq
24-Sep-08	Ran bit & scraper to 2390'. Had to rotate thru Qn perfs 2380-2388 (bot 8' of 28' of perfs). Ran production tubing, rods and pump
2-Sep-09	Convert to Queen Injection Pulled rods, pump and tubing. Picked up 1 jt and tagged PBTD 2,390'. POOH and laid down 76 jts. Ran 4 1/2" PC AD-1 pkr, PC SN and 74 jts Glassbore tbq. Circ csg and tbq w/45 bbls pkr fluid, set pkr w/22 pts tension, loaded backside w/15 bbls pkr fluid and tested backside to 400 psi for 30 min. 10 psi drop. Ok
11-Sep-09	Conducted successful MIT test witnessed by OCD
21-Jul-10	1200si pumped 2 drums xylene, 2 drums CaSO4 conv (1/2 conc 2 drums wtr) SI.
23-Jul-10	Flowed back converter 20bbl. Acidized w/500 gal 15% NEFE w/3% Micellar solvent. Max 1050 psi - flowed back 25 bbl.
	CaSO4 Scale Treatment
21-Jul-10	1200psi Pumped 110gal xylene 8.5 BW flowback 2 BW pump 2 BW. Pumped 110gal CaSO4 conv (SC999) diluted w/110gal FW displ 7.5 BW SITP 1300 psi
23-Jul-10	SITP 375 psi flowed back 20 bbl out of 24 from converter job
26-Jul-10	160psi acidized w/500gal 15% w/2% micellar displ 8 BW Max 0.6 bpm 1050psi ISIP 970 5min 775 10min 662 after 1 hour flowed back 25 bbl SITP 0psi Acid job did not go over frac press - will acidize above frac press again
13-Sep-10	550 psi acidized w/500gal 15% w/2% micellar displ 12BW Max 2.7 bpm 2025psi ISIP 1600 5min 1267 10min 1110 after 1 hour flowback 30 bbl SITP 100 psi
29-Sep-10	Conducted Step-Rate test. Surf frac press 1350 psi (1.00 psi/ft)
	Workover
5-Jun-12	Pumped mixture 55 gal SC999 CaSO4 converter and 55 gal FW displ w/7 BFW SI 9 days. Flowed back 65 BW. Ran 3 7/8" bit & tagged at 2380. Rotated with tongs to 2384. Mostly iron sulfide. Acidized under a pkr w/1250 gal 15% NEFE. No press breaks 2bpm 2100psi, 3bpm 2400psi, 3.5bpm 2700psi, 4bpm 2950psi ISIP 1850 15min 1270. Flowed back 30 BW and cleaned up - put on injection (prob csg leak & prob up in 8 5/8" -backside would not hold - pkr is isolated)
19-Feb-14	Well failed MIT test by Richard Inge (OCD) probable csg leak
2-May-14	TA'd well - csg tst'd good below 195' -back off old csg at 294' -screwed in new 4 1/2" 11.6# J55 csg. Tst'd and old csg has new split 10' below collar at 294'. TA'd well w/CIBP at 2330' w/2sx cmt on top PBTD 2300'. Ran tbq back in hole. SI Csg Collars at 294, 251, 209, 163, 120, 78, 35
29-Jan-15	P&A'd. Tagged BPTD at 2330. Circ well w/9.5 ppg salt gel. Pumped 25sx plug 1546- tagged at 1062. Cut and pulled 4 1/2" csg at 415'. Pumped 60 sx plug at 465 tagged at 375'. Pumped 185sx plug at 375 tagged 365'. Pumped 190sx plug at 365 tagged at 191'. Pumped 90sx plug from 191' cmt circulated to surf. Cutoff 8 5/8" csg 3' below GL and installed required DH marker. 72 jts 2 3/8" J55 Glassbore tubing