

DISTRICT I  
1820 N. French Dr., Hobbs, NM 88240  
Phone (505) 393-6161 Fax (505) 393-0720

DISTRICT II  
811 S. First St., Artesia, NM 88210  
Phone (505) 748-1283 Fax (505) 748-0720

DISTRICT III  
1000 Rio Brazos Rd., Aztec, NM 87410  
Phone (505) 334-6176 Fax (505) 334-6170

DISTRICT IV  
1820 S. St. Francis Dr., Santa Fe, NM 87505  
Phone (505) 478-3480 Fax (505) 478-3482

State of New Mexico  
Energy, Minerals and Natural Resources Department

Form C-102  
Revised August 1, 2011

Submit one copy to appropriate  
District Office

OIL CONSERVATION DIVISION  
1220 South St. Francis Dr.  
Santa Fe, New Mexico 87505

WELL LOCATION AND ACREAGE DEDICATION PLAT

AMENDED REPORT

*As drilled + Pool Correction*

|                            |                                  |   |
|----------------------------|----------------------------------|---|
| API Number<br>30-015-42374 | Pool Code<br>47545               | Nash Draw; Delaware/Bone Spring (Avalon Sand) |
| Property Code<br>306402    | Property Name<br>POKER LAKE UNIT | Well Number<br>430H                           |
| ODRID No.<br>260737        | Operator Name<br>BOPCO, L.P.     | Elevation<br>3432'                            |

Surface Location

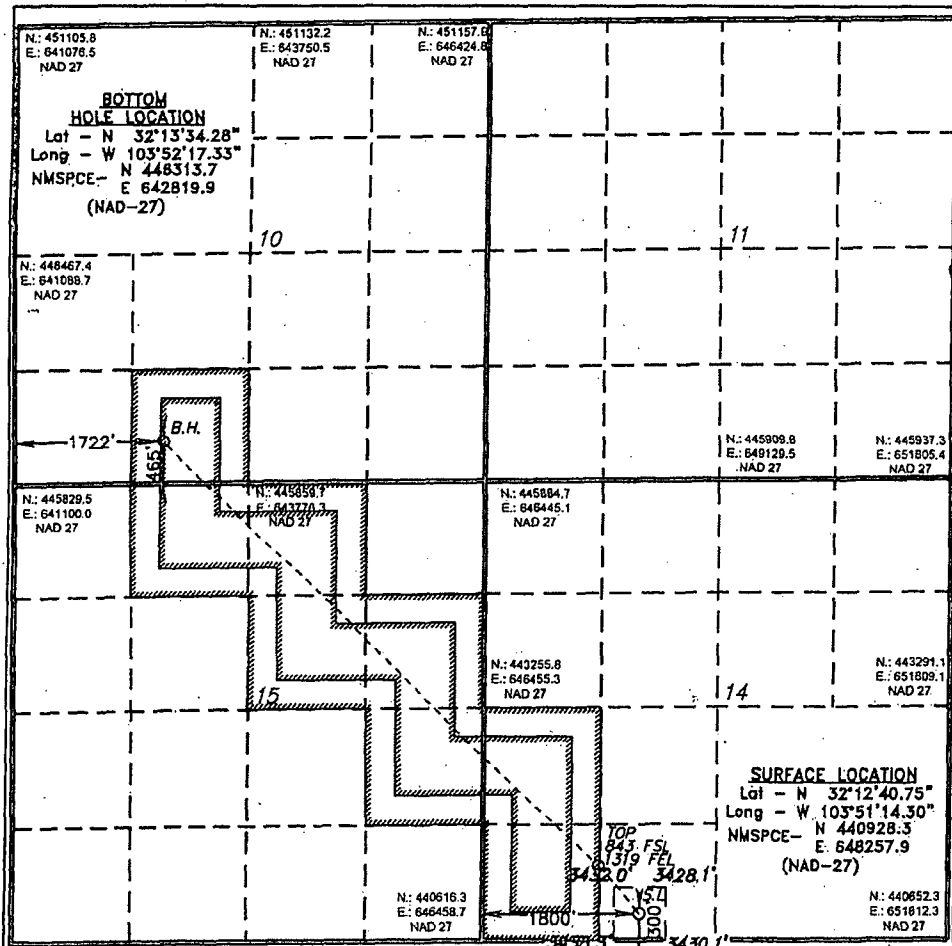
| UL or lot No. | Section | Township | Range | Lot Idn | Feet from the | North/South line | Feet from the | East/West line | County |
|---------------|---------|----------|-------|---------|---------------|------------------|---------------|----------------|--------|
| N             | 14      | 24 S     | 30 E  |         | 300           | SOUTH            | 1800          | WEST           | EDDY   |

Bottom Hole Location If Different From Surface

| UL or lot No. | Section | Township | Range | Lot Idn | Feet from the | North/South line | Feet from the | East/West line | County |
|---------------|---------|----------|-------|---------|---------------|------------------|---------------|----------------|--------|
| N             | 10      | 24 S     | 30 E  |         | 465           | SOUTH            | 1722          | WEST           | EDDY   |

|                        |                 |                    |           |
|------------------------|-----------------|--------------------|-----------|
| Dedicated Acres<br>320 | Joint or Infill | Consolidation Code | Order No. |
|------------------------|-----------------|--------------------|-----------|

NO ALLOWABLE WILL BE ASSIGNED TO THIS COMPLETION UNTIL ALL INTERESTS HAVE BEEN CONSOLIDATED  
OR A NON-STANDARD UNIT HAS BEEN APPROVED BY THE DIVISION



OPERATOR CERTIFICATION

I hereby certify that the information contained herein is true and complete to the best of my knowledge and belief, and that this organization either owns a working interest or undivided mineral interest in the land including the proposed bottom hole location or has a right to drill this well at this location pursuant to a contract with an owner of such a mineral or working interest, or to a voluntary pooling agreement or a compulsory pooling order heretofore entered by the division.

*Tracie J Cherry* 10/27/14  
Signature Date

Tracie J Cherry  
Printed Name  
tjcherry@basspet.com  
Email Address

SURVEYOR CERTIFICATION

I hereby certify that the well location shown on this plat was plotted from field notes of actual surveys made by me or under my supervision and that the same is true and correct to the best of my belief.

OCTOBER 25, 2013

Date Surveyed  
Signature & Seal of  
Professional Surveyor

Certificate No. Gary L. Jones 7977  
BASIN SURVEYS

0' 500' 1000' 1500' 2000'  
SCALE: 1" = 1000'  
WO Num.: 29641