

District I
1625 N. French Dr., Hobbs, NM 88240
Phone: (575) 393-6161 Fax: (575) 393-0720
District II
311 S. First St., Artesia, NM 88210
Phone: (575) 748-1283 Fax: (575) 748-9720
District III
1000 Rio Brazos Road, Aztec, NM 87410
Phone: (505) 334-6178 Fax: (505) 334-6170
District IV
1220 S. St. Francis Dr., Santa Fe, NM 87505
Phone: (505) 476-3460 Fax: (505) 476-3462

State of New Mexico
Energy, Minerals & Natural Resources Department
NM OIL CONSERVATION
ARTESIA DISTRICT
OIL CONSERVATION DIVISION
1220 South St. Francis Dr.
Santa Fe, NM 87505

Form C-102
Revised August 1, 2011
Submit one copy to appropriate
District Office

APR 17 2015

RECEIVED

☐ AMENDED REPORT

WELL LOCATION AND ACREAGE DEDICATION PLAT

¹ API Number 30-015-43049		² Pool Code 9670	³ Pool Name Calisbad; Bone Springs - South
⁴ Property Code 314774	⁵ Property Name SOLID STATE 30		⁶ Well Number 1
⁷ OGRID No. 6137	⁸ Operator Name DEVON ENERGY PRODUCTION COMPANY, L.P.		⁹ Elevation 3215.5

¹⁰ Surface Location

UL or lot no.	Section	Township	Range	Lot Idn	Feet from the	North/South line	Feet from the	East/West line	County
1	30	23 S	27 E		330	NORTH	330	WEST	EDDY

¹¹ Bottom Hole Location If Different From Surface

UL or lot no.	Section	Township	Range	Lot Idn	Feet from the	North/South line	Feet from the	East/West line	County

¹² Dedicated Acres	¹³ Joint or Infill	¹⁴ Consolidation Code	¹⁵ Order No.

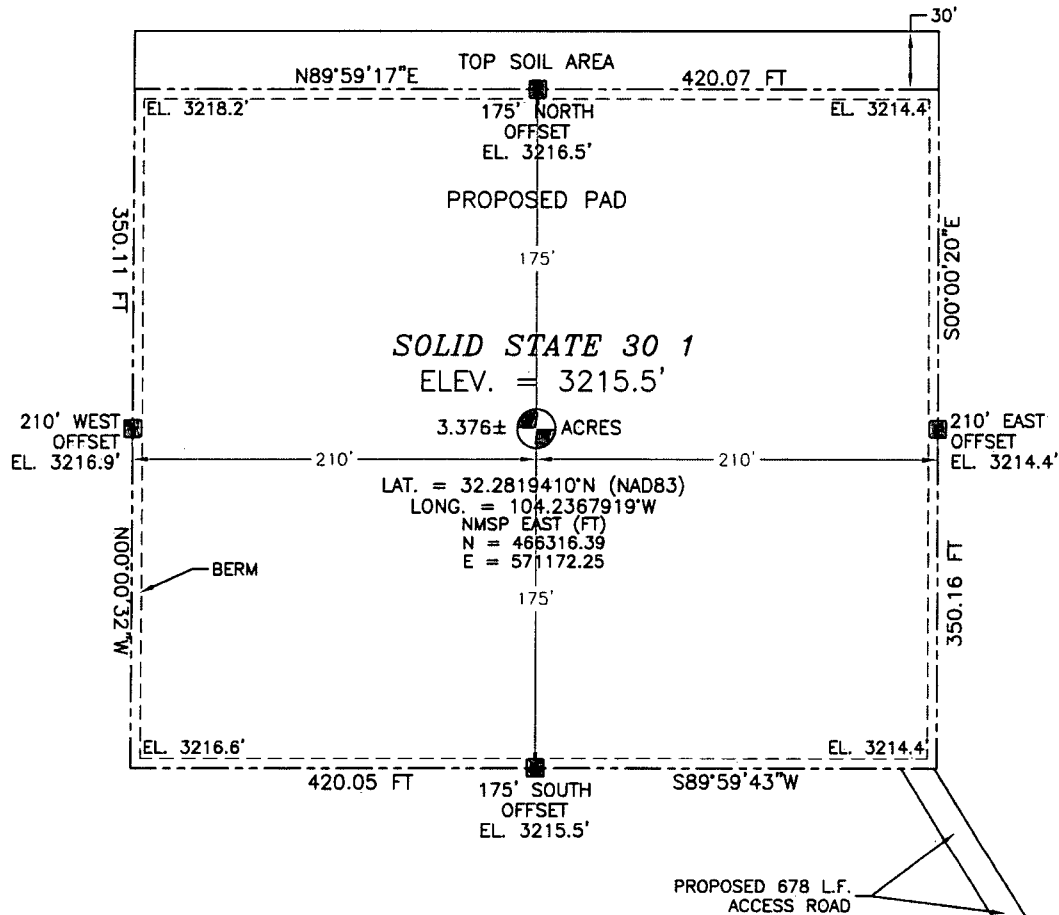
No allowable will be assigned to this completion until all interests have been consolidated or a non-standard unit has been approved by the division.

<p>N89°02'40"E 2686.00 FT</p> <p>330'</p> <p>SURFACE LOCATION</p> <p>LOT 1 38.55 AC. - BLM</p> <p>NW CORNER SEC. 30 LAT. = 32.2828337°N LONG. = 104.2378579°W</p> <p>NMSP EAST (FT) N = 466640.84 E = 570842.53</p> <p>LOT 2</p> <p>W/4 CORNER SEC. 30 LAT. = 32.2755495°N LONG. = 104.2378733°W</p> <p>NMSP EAST (FT) N = 463990.95 E = 570840.13</p> <p>LOT 3</p> <p>LOT 4</p> <p>SW CORNER SEC. 30 LAT. = 32.2682635°N LONG. = 104.2378870°W</p> <p>NMSP EAST (FT) N = 461340.41 E = 570838.26</p> <p>S89°44'27"W 2642.02 FT</p>		<p>N88°53'32"E 2652.55 FT</p> <p>N/4 CORNER SEC. 30 LAT. = 32.2829500°N LONG. = 104.2291694°W</p> <p>NMSP EAST (FT) N = 466685.62 E = 573527.52</p> <p>SOLID STATE 30 1</p> <p>ELEV. = 3215.5'</p> <p>LAT. = 32.2819410°N (NAD83) LONG. = 104.2367919°W</p> <p>NMSP EAST (FT) N = 466316.39 E = 571172.25</p> <p>NOTE: LATITUDE AND LONGITUDE COORDINATES ARE SHOWN USING THE NORTH AMERICAN DATUM OF 1983 (NAD83). LISTED NEW MEXICO STATE PLANE EAST COORDINATES ARE GRID (NAD83). BASIS OF BEARING AND DISTANCES USED ARE NEW MEXICO STATE PLANE EAST COORDINATES MODIFIED TO THE SURFACE.</p> <p>SE CORNER SEC. 30 LAT. = 32.2683151°N LONG. = 104.2207953°W</p> <p>NMSP EAST (FT) N = 461364.30 E = 576120.99</p> <p>S89°44'27"W 2642.02 FT</p>	<p>¹⁷ OPERATOR CERTIFICATION</p> <p>I hereby certify that the information contained herein is true and complete to the best of my knowledge and belief, and that this organization either owns a working interest or undivided mineral interest in the land including the proposed bottom hole location or has a right to drill this well at this location pursuant to a contract with an owner of such a mineral or working interest, or to a voluntary pooling agreement or a compulsory pooling order heretofore entered by the division.</p> <p><i>Tami Laird</i> April 16, 2015 Signature Date</p> <p>Tami Laird; Regulatory Compliance Analyst Printed Name</p> <p>tami.laird@dv.com E-mail Address</p> <p>¹⁸ SURVEYOR CERTIFICATION</p> <p>I hereby certify that the well location shown on this plat was plotted from field notes of actual surveys made by me or under my supervision, and that the same is true and correct to the best of my belief.</p> <p>FEBRUARY 27, 2015 Date of Survey</p> <p><i>[Signature]</i> Signature and Seal of Professional Surveyor</p> <p>Certificate Number: FULMON F. JARAMILLO, PLS 12797 SURVEY NO. 3753</p>
---	--	--	---

SECTION 30, TOWNSHIP 23 SOUTH, RANGE 27 EAST, N.M.P.M.
EDDY COUNTY, STATE OF NEW MEXICO
SITE MAP

24 19
25 30 BC 1943

NOTE: LATITUDE AND LONGITUDE COORDINATES ARE SHOWN USING THE NORTH AMERICAN DATUM OF 1983 (NAD83). LISTED NEW MEXICO STATE PLANE EAST COORDINATES ARE GRID (NAD83). BASIS OF BEARING AND DISTANCES USED ARE NEW MEXICO STATE PLANE EAST COORDINATES MODIFIED TO THE SURFACE.



010 50 100 200

SCALE 1" = 100'

DIRECTIONS TO LOCATION

FROM THE INTERSECTION OF CO. RD. 748 (OLD CAVERN HWY) AND CO. RD. 758 (MISTY LANE) GO SOUTHWEST ON MISTY LANE FOR APPROX. 1 MILE TO BEGIN PROPOSED ROAD SURVEY. FOLLOW ROAD SURVEY NORTHWEST APPROX. 678' TO SOUTHEAST CORNER LOCATION.

DEVON ENERGY PRODUCTION COMPANY, L.P.

SOLID STATE 30 1

LOCATED 330 FT. FROM THE NORTH LINE
AND 330 FT. FROM THE WEST LINE OF
SECTION 30, TOWNSHIP 23 SOUTH,
RANGE 27 EAST, N.M.P.M.
EDDY COUNTY, STATE OF NEW MEXICO

FEBRUARY 27, 2015

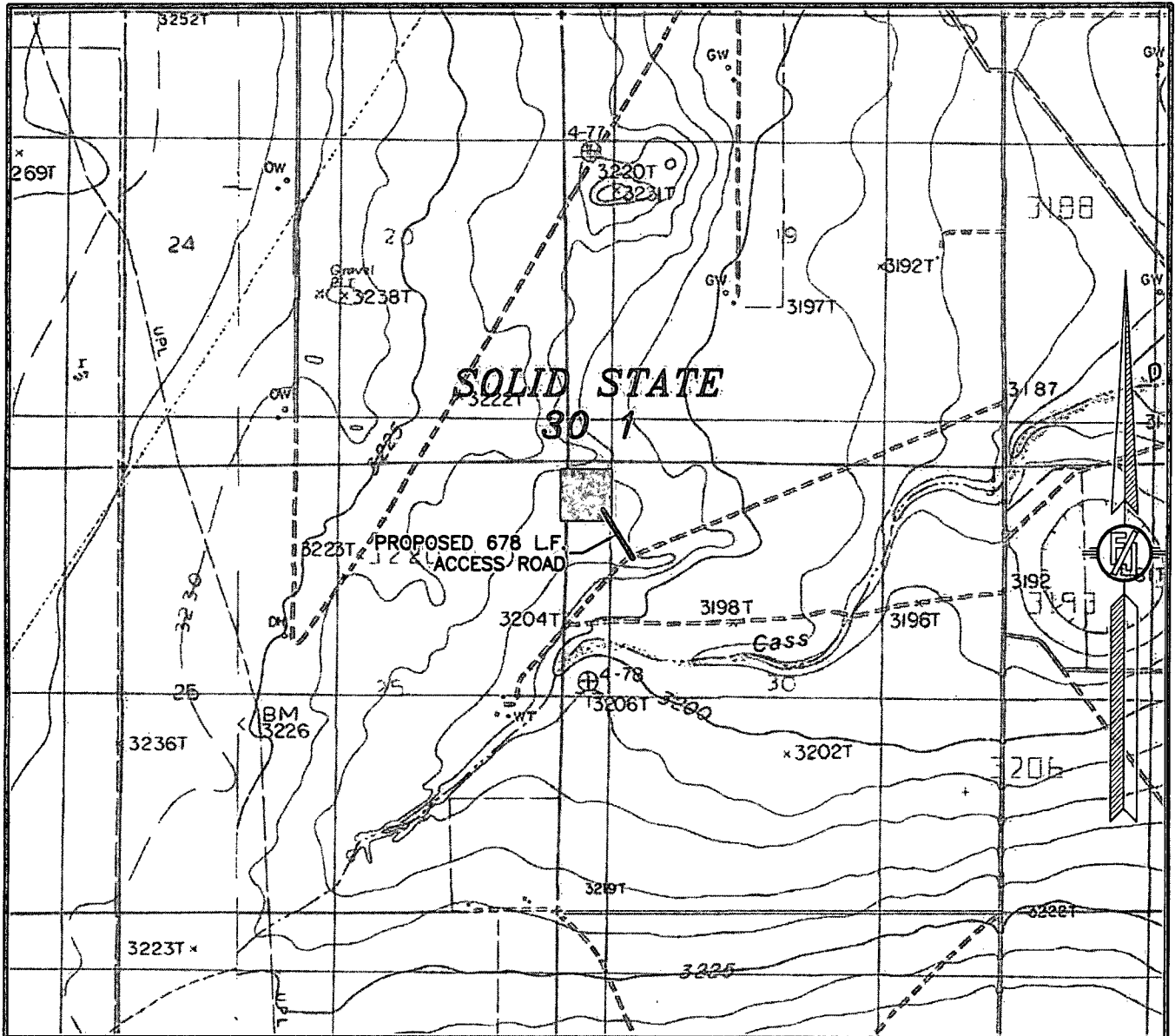
SURVEY NO. 3753

MADRON SURVEYING, INC.

301 SOUTH CANAL
(575) 234-3341

CARLSBAD, NEW MEXICO

SECTION 30, TOWNSHIP 23 SOUTH, RANGE 27 EAST, N.M.P.M.
EDDY COUNTY, STATE OF NEW MEXICO
LOCATION VERIFICATION MAP



USGS QUAD MAP:
OTIS

NOT TO SCALE

DEVON ENERGY PRODUCTION COMPANY, L.P.
SOLID STATE 30 1

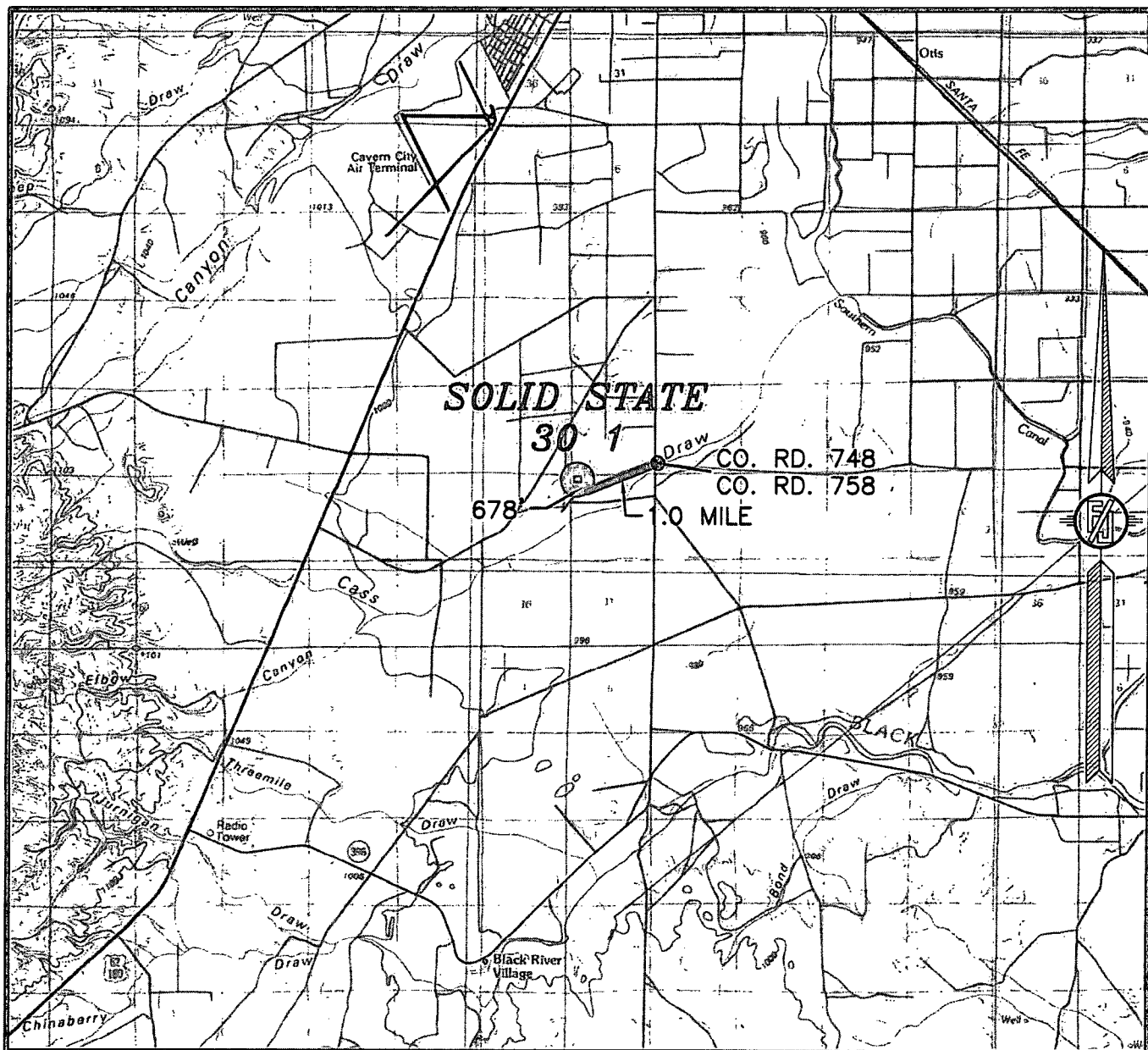
LOCATED 330 FT. FROM THE NORTH LINE
AND 330 FT. FROM THE WEST LINE OF
SECTION 30, TOWNSHIP 23 SOUTH,
RANGE 27 EAST, N.M.P.M.
EDDY COUNTY, STATE OF NEW MEXICO

FEBRUARY 27, 2015

SURVEY NO. 3753

MADRON SURVEYING, INC. 301 SOUTH CANAL (575) 234-3341 CARLSBAD, NEW MEXICO

SECTION 30, TOWNSHIP 23 SOUTH, RANGE 27 EAST, N.M.P.M.
EDDY COUNTY, STATE OF NEW MEXICO
VICINITY MAP



DISTANCES IN MILES

NOT TO SCALE

DIRECTIONS TO LOCATION

FROM THE INTERSECTION OF CO. RD. 748 (OLD CAVERN HWY) AND CO. RD. 758 (MISTY LANE) GO SOUTHWEST ON MISTY LANE FOR APPROX. 1 MILE TO BEGIN PROPOSED ROAD SURVEY. FOLLOW ROAD SURVEY NORTHWEST APPROX. 678' TO SOUTHEAST CORNER LOCATION.

**DEVON ENERGY PRODUCTION COMPANY, L.P.
SOLID STATE 30 1**

LOCATED 330 FT. FROM THE NORTH LINE
AND 330 FT. FROM THE WEST LINE OF
SECTION 30, TOWNSHIP 23 SOUTH,
RANGE 27 EAST, N.M.P.M.
EDDY COUNTY, STATE OF NEW MEXICO

FEBRUARY 27, 2015

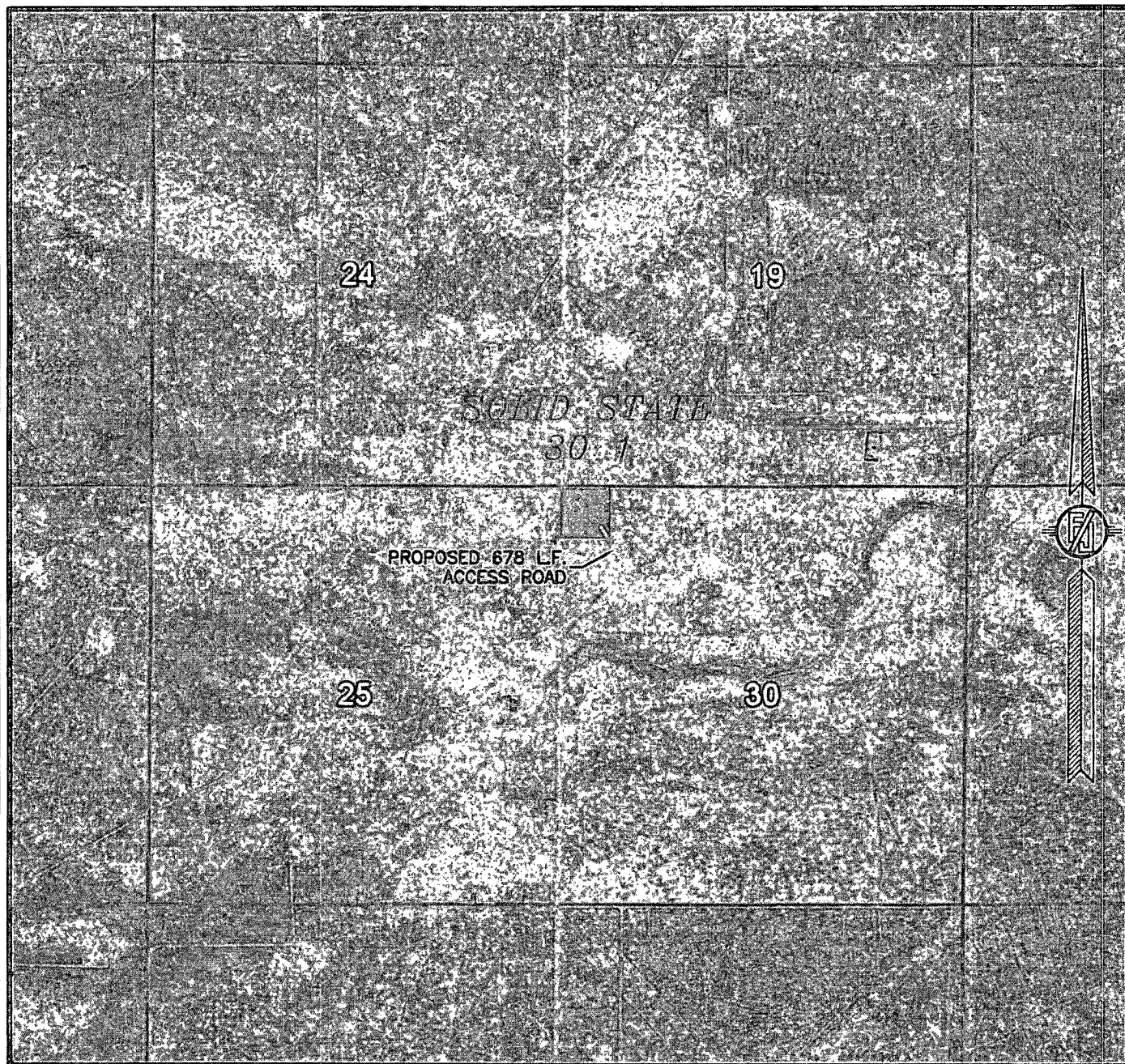
MADRON SURVEYING, INC.

301 SOUTH CANAL
(575) 234-3341

CARLSBAD, NEW MEXICO

SURVEY NO. 3753

SECTION 30, TOWNSHIP 23 SOUTH, RANGE 27 EAST, N.M.P.M.
EDDY COUNTY, STATE OF NEW MEXICO
AERIAL PHOTO



NOT TO SCALE
AERIAL PHOTO:
GOOGLE EARTH
APR. 2013

DEVON ENERGY PRODUCTION COMPANY, L.P.
SOLID STATE 30 1

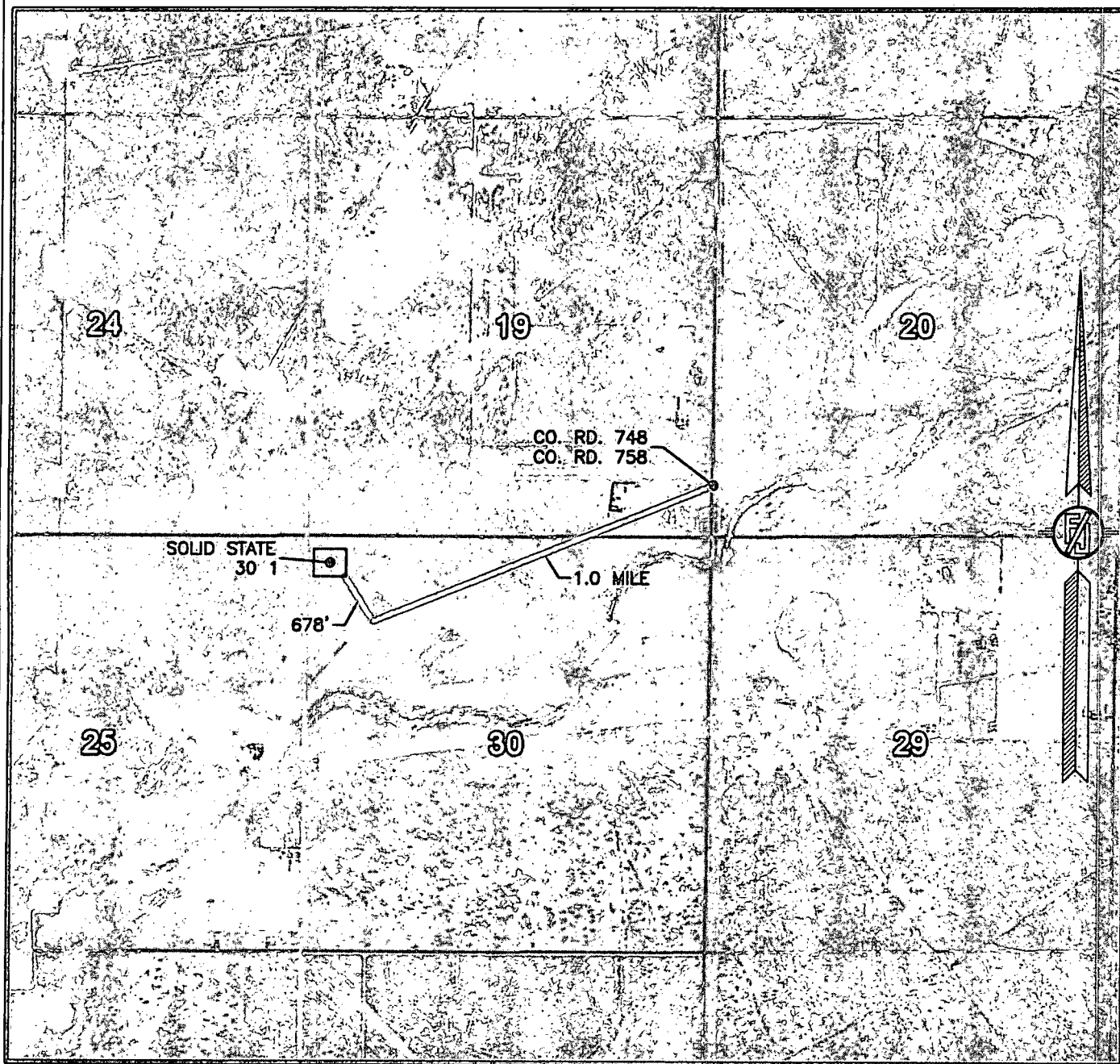
LOCATED 330 FT. FROM THE NORTH LINE
AND 330 FT. FROM THE WEST LINE OF
SECTION 30, TOWNSHIP 23 SOUTH,
RANGE 27 EAST, N.M.P.M.
EDDY COUNTY, STATE OF NEW MEXICO

FEBRUARY 27, 2015

SURVEY NO. 3753

MADRON SURVEYING, INC. 301 SOUTH CANAL CARLSBAD, NEW MEXICO
(575) 234-3341

SECTION 30, TOWNSHIP 23 SOUTH, RANGE 27 EAST, N.M.P.M.
EDDY COUNTY, STATE OF NEW MEXICO
AERIAL ACCESS ROUTE MAP



NOT TO SCALE
AERIAL PHOTO:
GOOGLE EARTH
APR. 2013

DEVON ENERGY PRODUCTION COMPANY, L.P.
SOLID STATE 30 1

LOCATED 330 FT. FROM THE NORTH LINE
AND 330 FT. FROM THE WEST LINE OF
SECTION 30, TOWNSHIP 23 SOUTH,
RANGE 27 EAST, N.M.P.M.
EDDY COUNTY, STATE OF NEW MEXICO

FEBRUARY 27, 2015

SURVEY NO. 3753

MADRON SURVEYING, INC. 301 SOUTH CANAL (575) 234-3341 CARLSBAD, NEW MEXICO