

District I
1625 N. French Dr., Hobbs, NM 88240
Phone: (575) 393-6161 Fax: (575) 393-0720
District II
811 S. First St., Artesia, NM 88210
Phone: (575) 748-1283 Fax: (575) 748-9720
District III
1000 Rio Brazos Road, Aztec, NM 87410
Phone: (505) 334-6178 Fax: (505) 334-6170
District IV
1220 S. St. Francis Dr., Santa Fe, NM 87505
Phone: (505) 476-3460 Fax: (505) 476-3462

State of New Mexico
Energy, Minerals & Natural Resources
Department
OIL CONSERVATION DIVISION
1220 South St. Francis Dr.
Santa Fe, NM 87505

FORM C-102

Revised August 1, 2011

Submit one copy to appropriate

District Office

☐ AMENDED REPORT

WELL LOCATION AND ACREAGE DEDICATION PLAT

¹ API Number 30-015-43087	² Pool Code 75750	³ Pool Name Culebra Bluff; WC; South (Gas)
⁴ Property Code 313993	⁵ Property Name TIGER 14-24S-28E RB	⁶ Well Number #204H
⁷ OCRID No 228937	⁸ Operator Name MATADOR PRODUCTION COMPANY	⁹ Elevation 2978'

¹⁰Surface Location

UL or lot no.	Section	Township	Range	Lot Idn	Feet from the	North/South line	Feet from the	East/West line	County
P	14	24-S	28-E	-	475'	SOUTH	229'	EAST	EDDY

UL or lot no.	Section	Township	Range	Lot Idn	Feet from the	North/South line	Feet from the	East/West line	County
M	14	24-S	28-E	-	660'	SOUTH	240'	WEST	EDDY

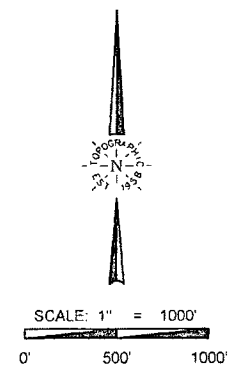
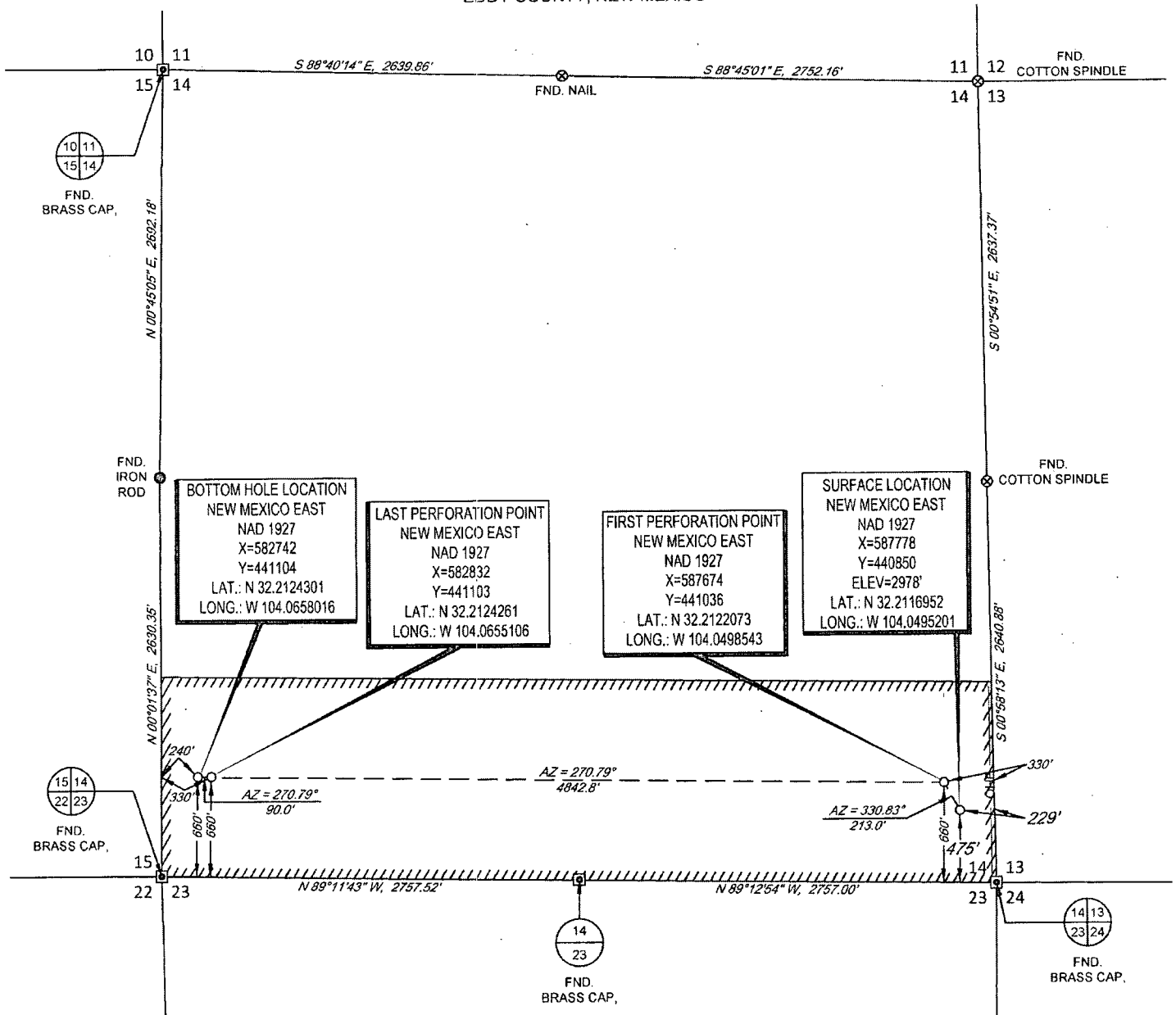
¹² Dedicated Acres	¹³ Joint or Infill	¹⁴ Consolidation Code	¹⁵ Order No.

No allowable will be assigned to this completion until all interests have been consolidated or a non-standard unit has been approved by the division.

<p>¹⁶</p>				<p>¹⁷OPERATOR CERTIFICATION</p> <p>I hereby certify that the information contained herein is true and complete to the best of my knowledge and belief, and that this organization either owns a working interest or unleased mineral interest in the land including the proposed bottom hole location or has a right to drill this well at this location pursuant to a contract with an owner of such a mineral or working interest, or to a voluntary pooling agreement or a compulsory pooling order heretofore entered by the division.</p> <p><i>Chris Carleton</i> 5/4/15 Signature Date</p> <p>Chris Carleton Printed Name</p> <p>ccarleton@matadorresources.com E-mail Address</p>
<p>BOTTOM HOLE LOCATION NEW MEXICO EAST NAD 1927 X=582742 Y=441104 LAT.: N 32.2124301 LONG.: W 104.0658016</p>	<p>LAST PERFORATION POINT NEW MEXICO EAST NAD 1927 X=582832 Y=441103 LAT.: N 32.2124261 LONG.: W 104.0655106</p>	<p>FIRST PERFORATION POINT NEW MEXICO EAST NAD 1927 X=587674 Y=441036 LAT.: N 32.2122073 LONG.: W 104.0498543</p>	<p>SURFACE LOCATION NEW MEXICO EAST NAD 1927 X=587778 Y=440850 LAT.: N 32.2116952 LONG.: W 104.0495201</p>	
<p>¹⁸SURVEYOR CERTIFICATION</p> <p>I hereby certify that the well location shown on this plat was plotted from field notes of actual surveys made by me or under my supervision, and that the same is true to the best of my belief.</p> <p>04/28/2015 Date of Survey</p> <p><i>Michael B. Brown</i> Signature and Seal of Professional Surveyor</p> <p>18329 Certificate Number</p>				

5/5/15 ASD

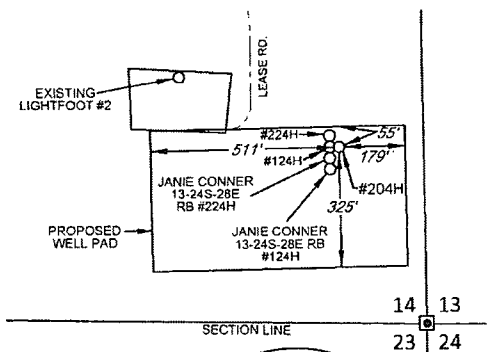
EDDY COUNTY, NEW MEXICO



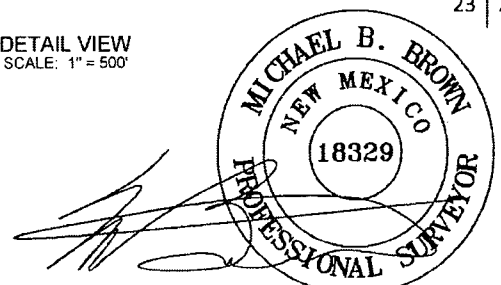
LEASE NAME & WELL NO.: TIGER 14-24S-28E RB #204H

SECTION 14 TWP 24-S RGE 28-E SURVEY N.M.P.M.
 COUNTY EDDY STATE NM
 DESCRIPTION 475' FSL & 229' FEL

DISTANCE & DIRECTION
 FROM INT. OF US-285 & DUARTE RD.. GO EAST ON DUARTE RD.
 ±1.3 MILES, THENCE SOUTH (RIGHT) ON McDONALD RD. ±0.8
 MILES, THENCE SOUTH (RIGHT) ON LEASE RD. ±0.1 MILES TO A
 POINT ±450 FEET EAST OF THE LOCATION.



DETAIL VIEW
 SCALE: 1" = 500'



Michael Blake Brown, P.S. No. 18329
 APRIL 27, 2015

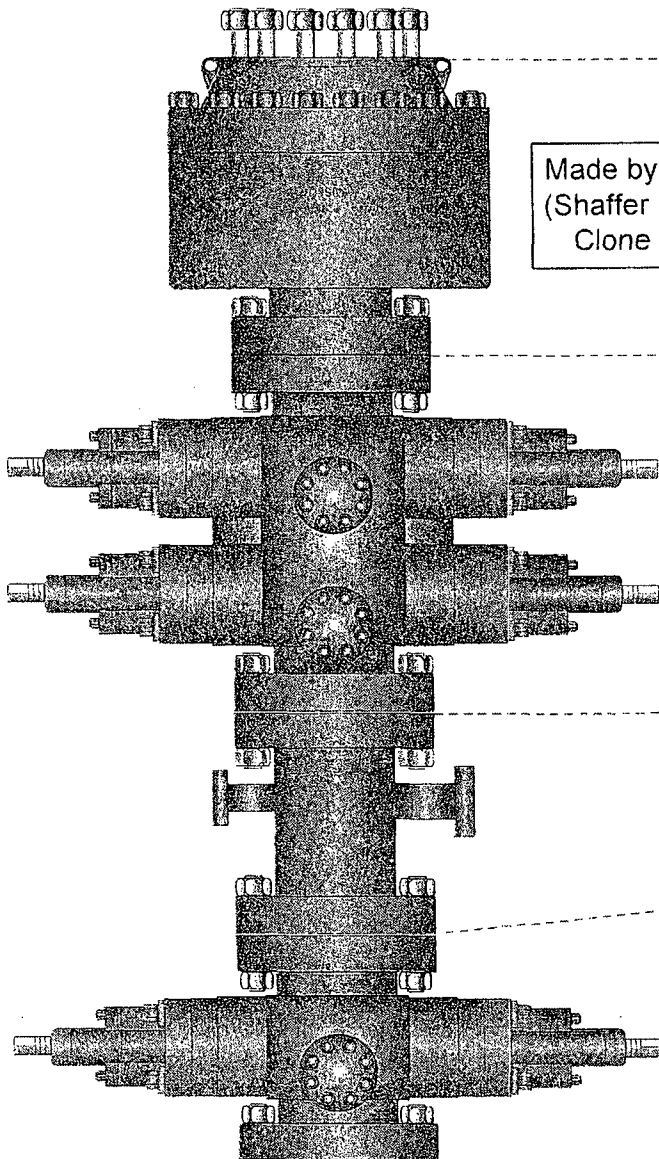


PATTERSON-UTI

Well Control

RIG:

203



Made by Cameron
(Shaffer Spherical)
Clone Annular

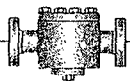
PATTERSON-UTI # PS2-628
STYLE: New Shaffer Spherical
BORE 13 5/8" PRESSURE 5,000
HEIGHT: 48 1/2" WEIGHT: 13,800 lbs

PATTERSON-UTI # PC2-128
STYLE: New Cameron Type U
BORE 13 5/8" PRESSURE 10,000
RAMS: TOP 5" Pipe BTM Blinds
HEIGHT: 66 5/8" WEIGHT: 24,000 lbs

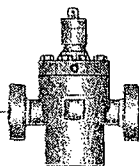
Length 40" Outlets 4" 10M
DSA 4" 10M x 2" 10M

PATTERSON-UTI # PC2-228
STYLE: New Cameron Type U
BORE 13 5/8" PRESSURE 10,000
RAMS: 5" Pipe
HEIGHT: 41 5/8" WEIGHT: 13,000 lbs

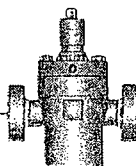
WING VALVES



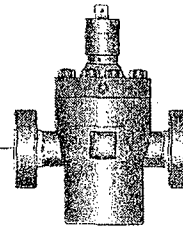
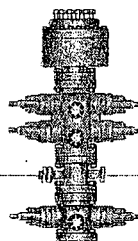
2" Check Valve



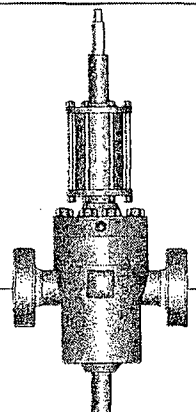
2" Manual Valve



2" Manual Valve



4" Manual Valve



4" Hydraulic Valve