

## OIL CONSERVATION DIVISION

1220 South St. Francis Dr.

Santa Fe, NM 87505

RECEIVED

WELL API NO.

30-015-26671

5. Indicate Type of Lease

STATE ☒ FEE ☐

6. State Oil &amp; Gas Lease No.

K-6385

7. Lease Name or Unit Agreement Name

Dee 36 SE State

8. Well Number

5

9. OGRID Number

025575

10. Pool name or Wildcat

Canyon; Wolfcamp

## SUNDRY NOTICES AND REPORTS ON WELLS

(DO NOT USE THIS FORM FOR PROPOSALS TO DRILL OR TO DEEPEN OR PLUG BACK TO A DIFFERENT RESERVOIR. USE "APPLICATION FOR PERMIT" (FORM C-101) FOR SUCH PROPOSALS.)

1. Type of Well: Oil Well ☐ Gas Well ☒ Other

2. Name of Operator

Yates Petroleum Corporation

3. Address of Operator

105 South Fourth Street, Artesia, NM 88210

4. Well Location

Unit Letter P : 990 feet from the South line and 990 feet from the East line

Section

36

Township

19S

Range

24E

NMPM

Eddy

County

11. Elevation (Show whether DR, RKB, RT, GR, etc.)

3592'GR

## 12. Check Appropriate Box to Indicate Nature of Notice, Report or Other Data

## NOTICE OF INTENTION TO:

PERFORM REMEDIAL WORK ☐ PLUG AND ABANDON ☒TEMPORARILY ABANDON ☐ CHANGE PLANS ☐PULL OR ALTER CASING ☐ MULTIPLE COMPL ☐DOWNHOLE COMMINGLE ☐CLOSED-LOOP SYSTEM ☐OTHER: ☐

## SUBSEQUENT REPORT OF:

REMEDIAL WORK ☐ ALTERING CASING ☐COMMENCE DRILLING OPNS. ☐ P AND A ☐CASING/CEMENT JOB ☐OTHER: ☐

13. Describe proposed or completed operations. (Clearly state all pertinent details, and give pertinent dates, including estimated date of starting any proposed work). SEE RULE 19.15.7.14 NMAC. For Multiple Completions: Attach wellbore diagram of proposed completion or recompletion.

Yates Petroleum Corporation plans to plug and abandon this well as follows:

1. MIRU all safety equipment as needed. NU BOP. RIH with GR/JB to 7040'. Set a 7" CIBP at 7030' then dump 35' Class "H" cement on top.
2. Spot a 45 sx Class "C" cement plug from 5320'-5170'. This will cover top of Wolfcamp.
3. Spot a 40 sx Class "C" cement plug from 4161'-4021'. This will cover DV tool.
4. Spot a 35 sx Class "C" cement plug from 2170'-2050'. This will cover top of Glorieta.
5. Spot a 30 sx Class "C" cement plug from 1255'-1145'. This will cover 9-5/8" casing shoe. WOC and tag.
6. Spot a 45 sx Class "C" cement plug from 150' up to surface.
7. Cut off wellhead, install dry hole marker and clean location.

Wellbore schematics attached

Spud Date:

Rig Release Date:

Approved for plugging of well bore only.  
 Liability under bond is retained pending receipt  
 of C-103 (Subsequent Report of Well-Plugging)  
 which may be found on OCD Web Page under  
 Forms, www.cmnrd.state.nm.us/oed.

well must be plugged by 5/8/2016

I hereby certify that the information above is true and complete to the best of my knowledge and belief.

SIGNATURE

TITLE

Regulatory Reporting Supervisor

DATE

April 29, 2015

Type or print name

Tina Huerta

E-mail address:

tinah@yatespetroleum.com

PHONE:

575-748-4168

For State Use Only

APPROVED BY:

TITLE

Dist II Supervisor

DATE

5/7/15

Conditions of Approval (if any):

★ See Attached COA's

WELL NAME: Dee 36SE State #5 FIELD: N. Dagger Draw U. Penn  
 LOCATION: 990' FSL & 990' FEL of Section 36-19S-24E Eddy, NM  
 GL: 3,592' ZERO:  KB: 3,610'  
 SPUD DATE: 6/8/81 COMPLETION DATE: 7/13/91  
 COMMENTS: API No.: 30-015-26671

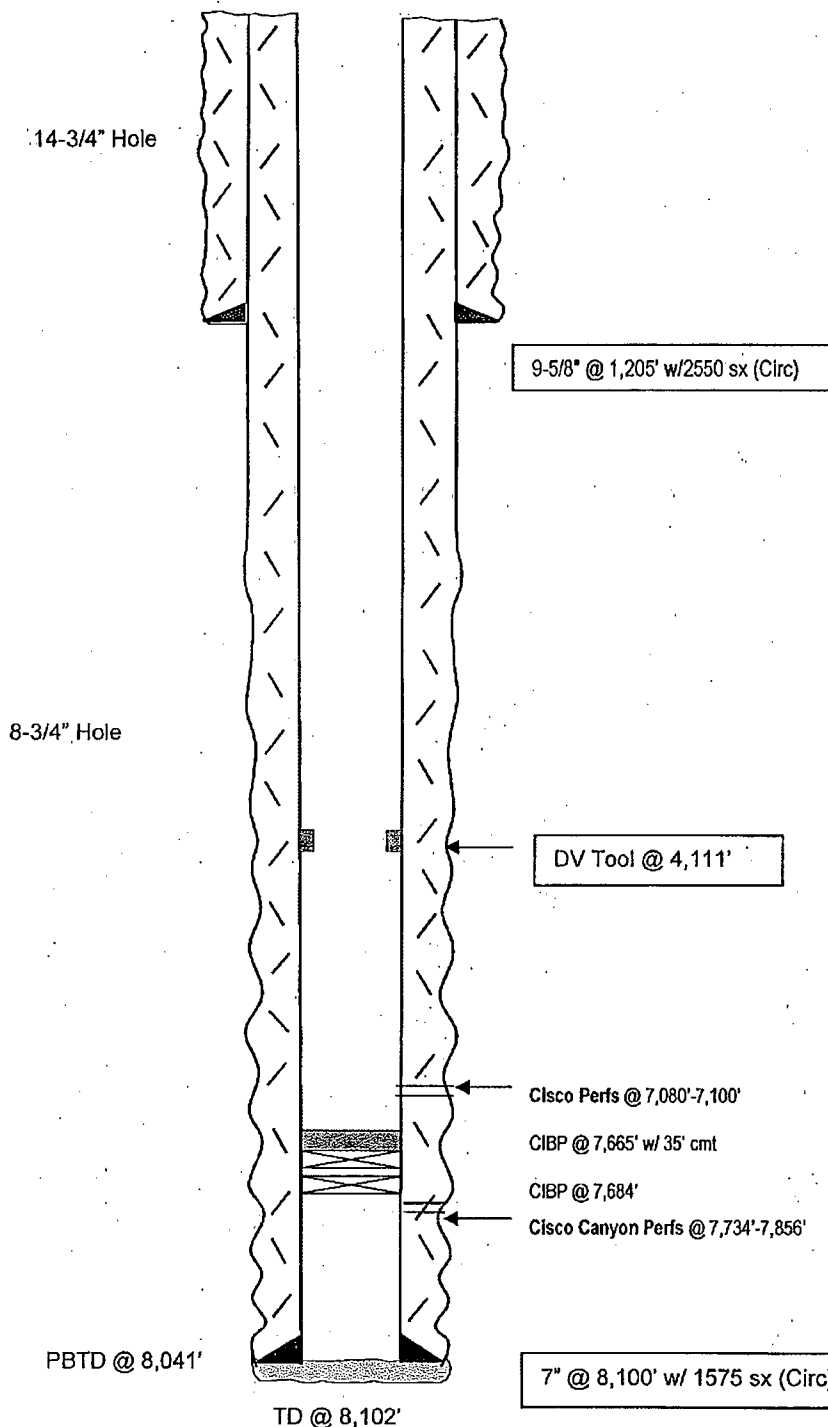
# CASING PROGRAM

|                      |               |
|----------------------|---------------|
| 9-5/8" 36# K-55 LT&C | <b>1,205'</b> |
| 7" 26# K-55 LT&C     | <b>8,102'</b> |
|                      |               |
|                      |               |
|                      |               |
|                      |               |
|                      |               |

**Before**

## TOPS

|          |        |
|----------|--------|
| Glorieta | 2,170' |
| Paddock  | 2,420' |
| WC       | 5,320' |
| Cisco    | 7,600' |



**Not to Scale**  
 3/16/15  
 BAL

WELL NAME: Dee 36SE State #5 FIELD: N. Dagger Draw U. Penn  
 LOCATION: 990' FSL & 990' FEL of Section 36-19S-24E Eddy, NM  
 GL: 3,592' ZERO:  KB: 3,610'  
 SPUD DATE: 6/8/81 COMPLETION DATE: 7/13/91  
 COMMENTS: API No.: 30-015-26671

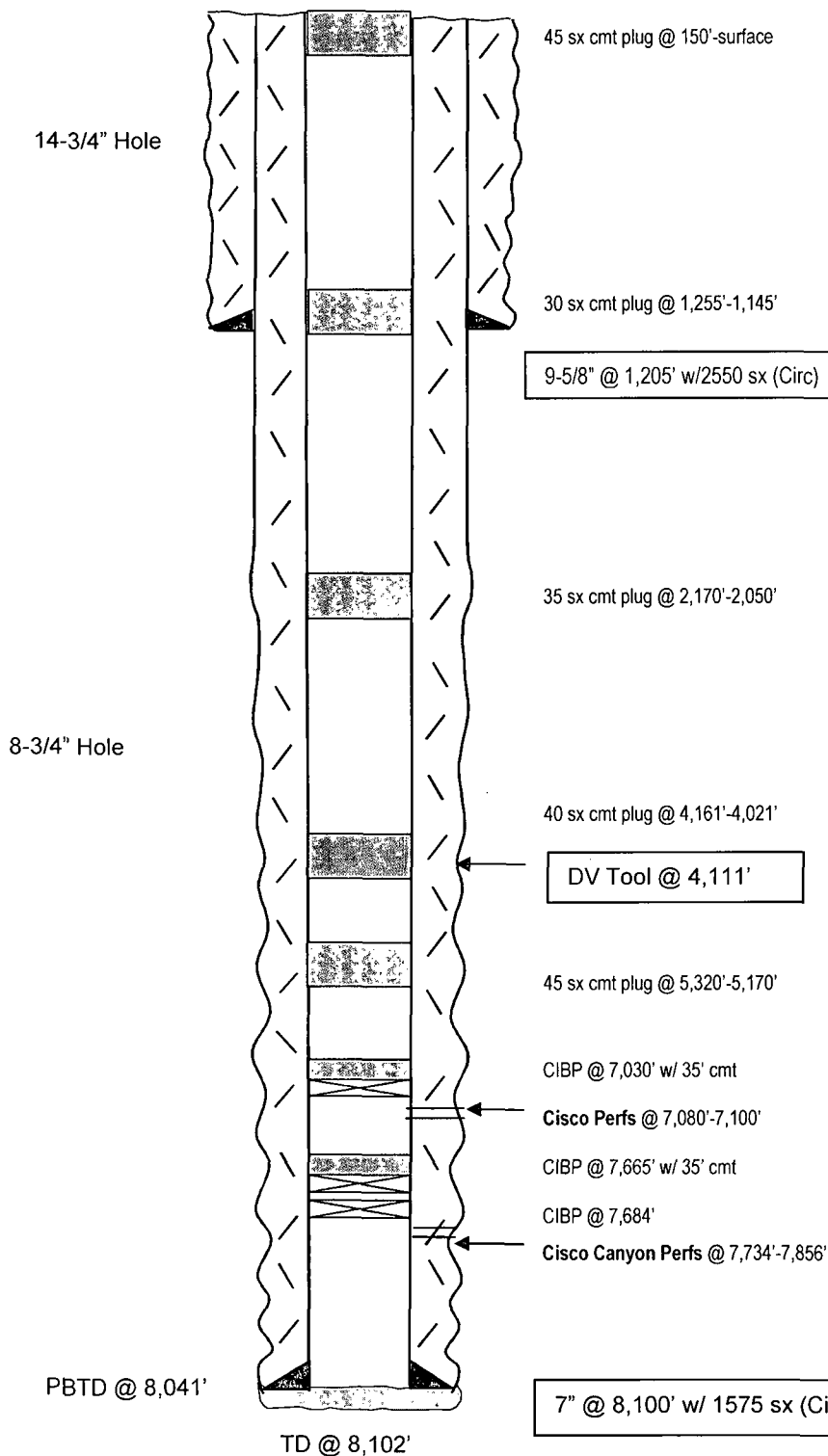
# CASING PROGRAM

|                      |               |
|----------------------|---------------|
| 9-5/8" 36# K-55 LT&C | <b>1,205'</b> |
| 7" 26# K-55 LT&C     | <b>8,102'</b> |
|                      |               |
|                      |               |
|                      |               |
|                      |               |
|                      |               |

**After**

## TOPS

|          |        |
|----------|--------|
| Glorieta | 2,170' |
| Paddock  | 2,420' |
| WC       | 5,320' |
| Cisco    | 7,600' |



**Not to Scale**  
 3/16/15  
 BAL

NEW MEXICO OIL CONSERVATION DIVISION  
DISTRICT 2 OFFICE  
811 S. FIRST STREET  
ARTESIA, NM 88210  
(575)748-1283

**CONDITIONS OF APPROVAL FOR PLUGGING & ABANDONMENT**

Operator: Yates Petroleum

Well Name & Number: Dee 36 SE State #5-

API #: 30-015 - 26671

1. Produced water **will not** be used during any part of the plugging & abandonment operation.
2. Notify NMOCD Dist. 2 office at least 24 hrs before beginning work.
3. Closed Loop System is to be used for entire plugging operation. Upon completion, contents of steel pit are to be hauled to a permitted disposal location.
4. Trucking companies being used to haul oilfield waste fluids to a disposal – commercial or private – shall have an approved NMOCD C-133 permit. A copy of this permit shall be available in each truck used to haul waste products. It is the responsibility of the operator, as well as the contractor, to verify that this permit is place prior to performing work. Drivers shall produce a copy upon request of NMOCD Field Inspectors.
5. A subsequent C-103 will serve as notification that the well bore has been plugged ONLY. A C-103 FINAL shall be filed before any bonding can be released on the well. Upon receipt of the Final, an inspection will be performed to verify that the location has been satisfactorily cleaned to NMOCD standards.
6. If work has not begun within 90 days of the approval of this procedure, an extension request must be filed, stating reason that well has not been plugged.
7. Every attempt must be made to clean the well bore out to below the perms, before any plugs can be set, by whatever means possible.
8. **Cement Retainers may not be used.**
9. Squeeze pressures are not to exceed 500 PSI, unless approval is given by NMOCD.
10. Plugs may be combined after consulting with and getting approval from NMOCD.
11. Minimum WOC time for tag plugs will be 4 Hrs.

DATE: 5/2/15

APPROVED BY: AW

## GUIDELINES FOR PLUGGING AND ABANDONMENT

### DISTRICT II / ARTESIA

- All cement plugs will be a minimum of 100' in length or a minimum of 25 sacks of cement, whichever is greater.
- Mud laden fluids must be placed between all cement plugs.
- Mud laden fluids must be mixed at 25 sacks of gel per 100 bbls of water.
- A cement plug is required to be set 50' below and 50' above all casing shoes and casing stub plugs. These plugs must be tagged.
- A CIBP with 35' of cement on top may be set in lieu of 100' cement plug.
- A plug as indicated above must be placed within 100' of top perforation. This plug must be tagged.
- Plugs set below and above salt zones must be tagged.
- No more than 2000' is to be allowed between cement plugs in open hole and no more than 3000' in cased hole.
- DV tools are required to have a 100' cement plug set 50' above and below the tool and must be tagged.
- Formations to be isolated with plugs placed at the top of each formation are:
  - Fusselman
  - Devonian
  - Morrow
  - Wolfcamp
  - Bone Spring
  - Delaware
  - Any Salt Section (Plug at top and bottom)
  - Abo
  - Glorieta
  - Yates (this plus is usually at base of salt section)
- If cement does not exist behind casing strings at recommended formation depths, the casing must be cut and pulled with plugs set at these depths or casing must be perforated and cement squeezed behind casing at the formation depths.
- In the R-111-P area (Potash Mine area) a solid cement plug must be set across the salt section. Fluid used to mix the cement shall be saturated with the salts common to the section penetrated and in suitable proportions, but not more than a 3% calcium chloride by weight of cement will be considered the desired mixture whenever possible (50' below and 50' above).