

UNITED STATES  
DEPARTMENT OF THE INTERIOR  
BUREAU OF LAND MANAGEMENT

NE OIL GENE SUBMIT ON  
Duplicate  
DD (Other instructions on reverse side)  
Artesia NM 88210

30-015-25416  
Form approved.  
Budget Bureau No. 1004-0136  
Expires August 31, 1985

APPLICATION FOR PERMIT TO DRILL, DEEPEN, OR PLUG BACK

1a. TYPE OF WORK

DRILL ☒

DEEPEN ☐

PLUG BACK ☐

b. TYPE OF WELL

OIL  
WELL ☒

GAS  
WELL ☐

OTHER ☐

2. NAME OF OPERATOR

The Petroleum Corporation of Delaware

3. ADDRESS OF OPERATOR

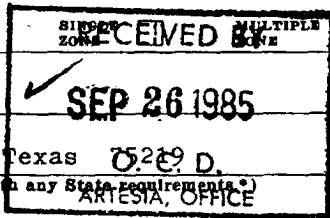
3811 Turtle Creek Suite 350 Dallas, Texas 75219 D.

4. LOCATION OF WELL (Report location clearly and in accordance with any State requirements.)

At surface

660' FSL & 1980' FWL

At proposed prod. zone



Unit letter

N SE 1/4 SW 1/4

14. DISTANCE IN MILES AND DIRECTION FROM NEAREST TOWN OR POST OFFICE\*

30 air miles So-So East of Carlsbad, N.M.

15. DISTANCE FROM PROPOSED\*

LOCATION TO NEAREST  
PROPERTY OR LEASE LINE, FT.  
(Also to nearest drlg. unit line, if any)

660

18. DISTANCE FROM PROPOSED LOCATION\*  
TO NEAREST WELL, DRILLING, COMPLETED,  
OR APPLIED FOR, ON THIS LEASE, FT.

1250'

16. NO. OF ACRES IN LEASE

160

19. PROPOSED DEPTH

5600

17. NO. OF ACRES ASSIGNED  
TO THIS WELL

40

20. ROTARY OR CABLE TOOLS

Rotary

21. ELEVATIONS (Show whether DF, RT, GR, etc.)

3019.4 GR

22. APPROX. DATE WORK WILL START\*

as soon as rig is available

23.

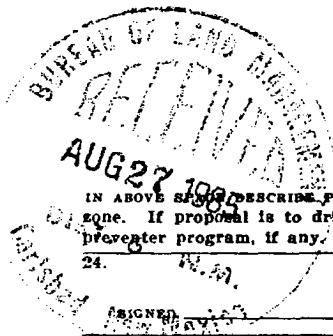
PROPOSED CASING AND CEMENTING PROGRAM

SIZE OF HOLE	SIZE OF CASING	WEIGHT PER FOOT	SETTING DEPTH	QUANTITY OF CEMENT
17 1/2"	13 3/8	48#	400'	sufficient to circulate to surf.
11"	* 8 5/8	24 & 32#	3150'	circ. back into salt section
7 7/8"	4 1/2	10.5#	5600'	Circ. Back into 8 5/8 csg.

\*Alternate- set DV Tool @ 3150 & cement back across salt section

Pay zone will be selectively perforated & stimulated as needed for optimum production.

- attached are:
1. Well location & acreage dedication plat.
  2. Supplemental Drilling Plan
  3. Surface Use Plan



IN ABOVE SPACE DESCRIBE PROPOSED PROGRAM: If proposal is to deepen or plug back, give data on present productive zone and proposed new productive zone. If proposal is to drill or deepen directionally, give pertinent data on subsurface locations and measured and true vertical depths. Give blowout preventer program, if any.

SIGNED Le Thomas TITLE Manager of Operations DATE August 16, 1985

(This space for Federal or State office use)

PERMIT NO.

APPROVAL DATE

APPROVED BY

TITLE

DATE

CONDITIONS OF APPROVAL, IF ANY:

\*See Instructions On Reverse Side

APPROVAL SUBJECT TO  
GENERAL REQUIREMENTS AND  
SPECIAL STIPULATIONS

Title 18 U.S.C. Section 1001, makes it a crime for any person knowingly and willfully to make to any department or agency of the United States any false, fictitious or fraudulent statements or representations as to any matter within its jurisdiction.

**NEW MEXICO OIL CONSERVATION COMMISSION**  
**WE. LOCATION AND ACREAGE DEDICATION PLAT**

Form C-102  
 Supersedes C-128  
 Effective 1-1-65

*All distances must be from the outer boundaries of the Section.*

Operator <b>THE PETROLEUM CORP. OF DELAWARE</b>			Lease <b>BRUSH FED. 12</b>			Well No. <b>1</b>		
Unit Letter <b>N</b>	Section <b>12</b>	Township <b>26S</b>	Range <b>29E</b>	County <b>EDDY</b>				
Actual Footage Location of Well: <b>560</b> feet from the <b>SOUTH</b> line and <b>1980</b> feet from the <b>WEST</b> line								
Ground Level Elev. <b>3019.4</b>	Producing Formation <b>SA</b>		Pool <i>Brushy Lower Delaware</i>			Dedicated Acreage: <b>4.3</b> Acres		

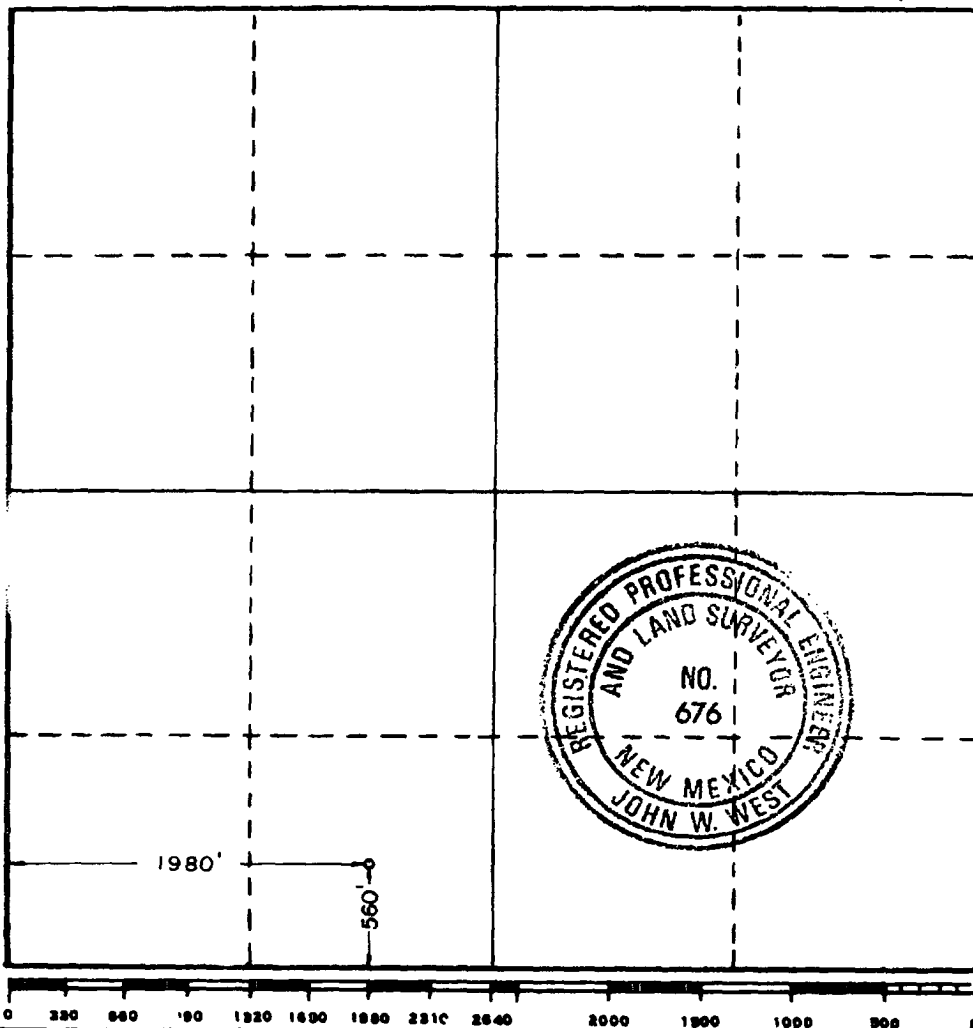
1. Outline the acreage dedicated to the subject well by colored pencil or hachure marks on the plat below.
2. If more than one lease is dedicated to the well, outline each and identify the ownership thereof (both as to working interest and royalty).
3. If more than one lease of different ownership is dedicated to the well, have the interests of all owners been consolidated by communitization, unitization, force-pooling, etc?

☐ Yes    ☐ No    If answer is "yes," type of consolidation \_\_\_\_\_

If answer is "no," list the owners and tract descriptions which have actually been consolidated. (Use reverse side of this form if necessary.) \_\_\_\_\_

No allowable will be assigned to the well until all interests have been consolidated (by communitization, unitization, forced-pooling, or otherwise) or until a non-standard unit, eliminating such interests, has been approved by the Commission.

<b>CERTIFICATION</b>	
I hereby certify that the information contained herein is true and complete to the best of my knowledge and belief.	
Name _____	
Position _____	
Company _____	
Date _____	
I hereby certify that the well location shown on this plat was plotted from field notes of actual surveys made by me or under my supervision, and that the same is true and correct to the best of my knowledge and belief.	
Date Surveyed <b>SEPT. 4, 1985</b>	
Registered Professional Engineer and/or Land Surveyor <i>John W. West</i>	
Certificate No. <b>JOHN W. WEST, 676</b>	<b>RONALD J. EIDSON, 3239</b>



**W MEXICO OIL CONSERVATION COMMISSION  
WELL LOCATION AND ACREAGE DEDICATION PLAT**

Form C-102  
Supersedes C-128  
Effective 1-1-65

All distances must be from the outer boundaries of the Section

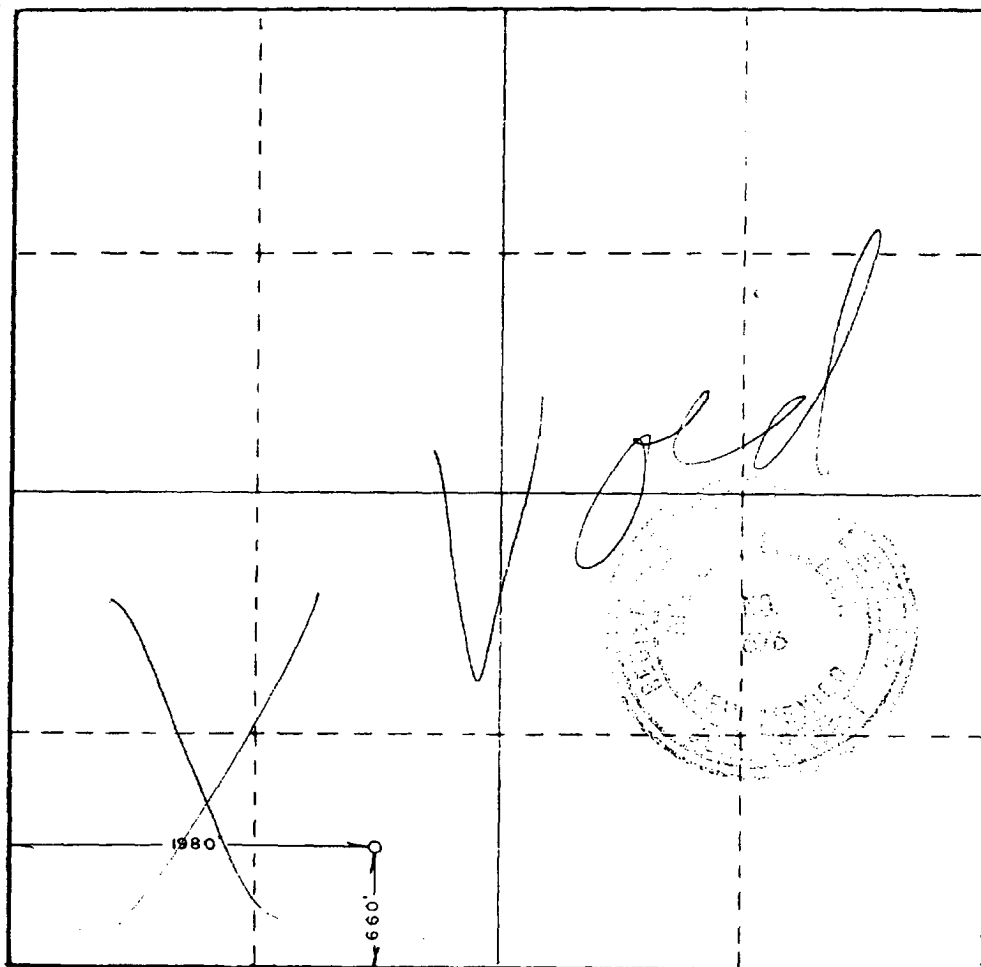
Operator <b>THE PETROLEUM CORP. OF DELAWARE</b>		Lease <b>BRUSH FED. 12</b>		Well No. <b>1</b>
Unit Letter <b>N</b>	Section <b>12</b>	Township <b>26 SOUTH</b>	Range <b>29 EAST</b>	County <b>EDDY</b>
Actual Footage Location of Well: <div style="display: flex; justify-content: space-between;"> <span>660 feet from the SOUTH line and</span> <span>1980 feet from the WEST line</span> </div>				
Ground Level Elev. <b>3019.4'</b>	Producing Formation <b>Delaware</b>	Pool <b>Brushy Draw Delaware</b>	Dedicated Acreage: <b>40</b> Acres	

1. Outline the acreage dedicated to the subject well by colored pencil or hachure marks on the plat below.
2. If more than one lease is dedicated to the well, outline each and identify the ownership thereof (both as to working interest and royalty).
3. If more than one lease of different ownership is dedicated to the well, have the interests of all owners been consolidated by communitization, unitization, force-pooling, etc?

☐ Yes    ☐ No    If answer is "yes," type of consolidation \_\_\_\_\_

If answer is "no," list the owners and tract descriptions which have actually been consolidated. (Use reverse side of this form if necessary.) \_\_\_\_\_

No allowable will be assigned to the well until all interests have been consolidated (by communitization, unitization, forced-pooling, or otherwise) or until a non-standard unit, eliminating such interests, has been approved by the Commission.



**CERTIFICATION**

I hereby certify that the information contained herein is true and complete to the best of my knowledge and belief.

**L.E. Thomas** *LE Thomas*  
Name

**L.E. Thomas**  
Position

**Engineer**

**The Petroleum Corporation of Delaware**  
Company

**8-26-85**  
Date

I hereby certify that the well location shown on this plat was plotted from field notes of actual surveys made by me or under my supervision, and that the same is true and correct to the best of my knowledge and belief.

**AUGUST 8, 1985**  
Date Surveyed

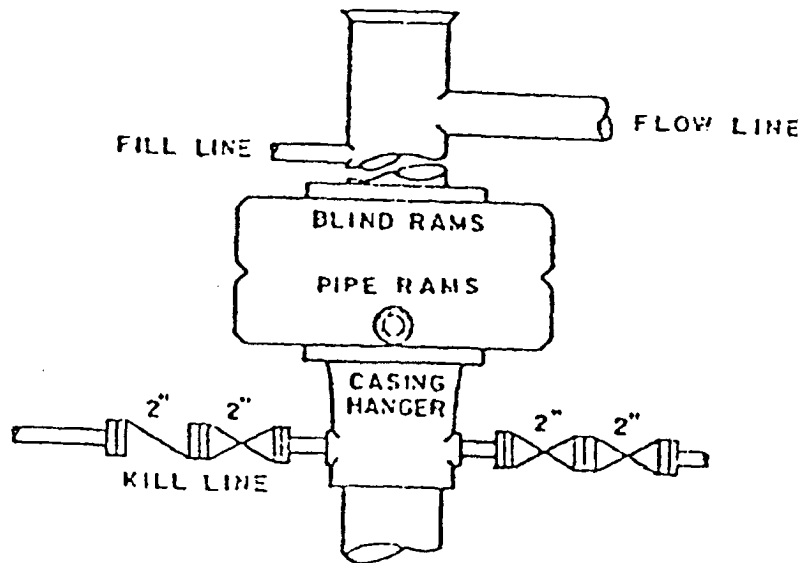
**Registered Professional Engineer and/or Land Surveyor**

*John W. West*  
Certificate No. **JOHN W. WEST, 676**  
**RONALD J. EIDSON, 3239**

BLOWOUT PREVENTER ARRANGEMENT

THE PETROLEUM CORPORATION  
OF DELAWARE

BRUSHY FEDERAL 12-1  
SE SW 13 26S 29E



900 Series

SUPPLEMENTAL DRILLING DATA

THE PETROLEUM CORPORATION  
OF DELAWARE  
WELL # 1 BRUSHY FEDERAL 12  
SE 1/4, SW 1/4, SEC. 12, 26S, 29E  
EDDY COUNTY, NEW MEXICO

1. SURFACE FORMATION: Unconsolidated Sands of Quaternary Age.

2. ESTIMATED TOPS OF GEOLOGIC MARKERS (G.L. Elevation 3019'):

Anhydrite	350'	Delaware Sand	3185'
Salado	470'	Cherry Canyon	4100'
Base Lower Salt	2950'	Brushy Canyon	5250'
Delaware Lime	3150'	Bone Springs	7000'

3. POSSIBLE HYDROCARBON BEARING ZONES:

Bell Canyon: Oil & Gas  
Cherry Canyon: Oil  
Brushy Canyon: Oil

4. CASING DESIGN

<u>Size</u>	<u>Interval</u>	<u>Weight</u>	<u>Grade</u>	<u>Joint</u>
13 3/8"	0 - 400'	48.0#	J-55	STC
* 8 5/8"	0 - 2400'	24.0#	J-55	STC
	2400 - 3150'	32.0#	J-55	STC
4 1/2"	0 - 5600'	10.5#	J-55	STC

\* Alternative: set DV Tool at 3150' & bring cement across salt section

5. PRESSURED CONTROL EQUIPMENT: Two Ram-Type Preventors. A sketch of BOP stack is attached.

6. CIRCULATING MEDIUM:

0 - 400' Fresh water with gel or lime as needed for viscosity.  
400 - 3150' Brine  
3150 - 6000' Cut brine conditioned as necessary for control of viscosity and water loss.

7. AUXILIARY EQUIPMENT: Drill string safety valve.

8. TESTING, LOGGING AND CORING PROGRAMS: No coring or DST's are planned. Electric logs will include a Compensated Neutron Log with Gamma Ray.

9. ABNORMAL PRESSURES, TEMPERATURES OR GAS: None anticipated.

10. ANTICIPATED STARTING DATE: It is planned that operations will commence as soon as possible. Duration of drilling, completion and testing operations should be two to six weeks.

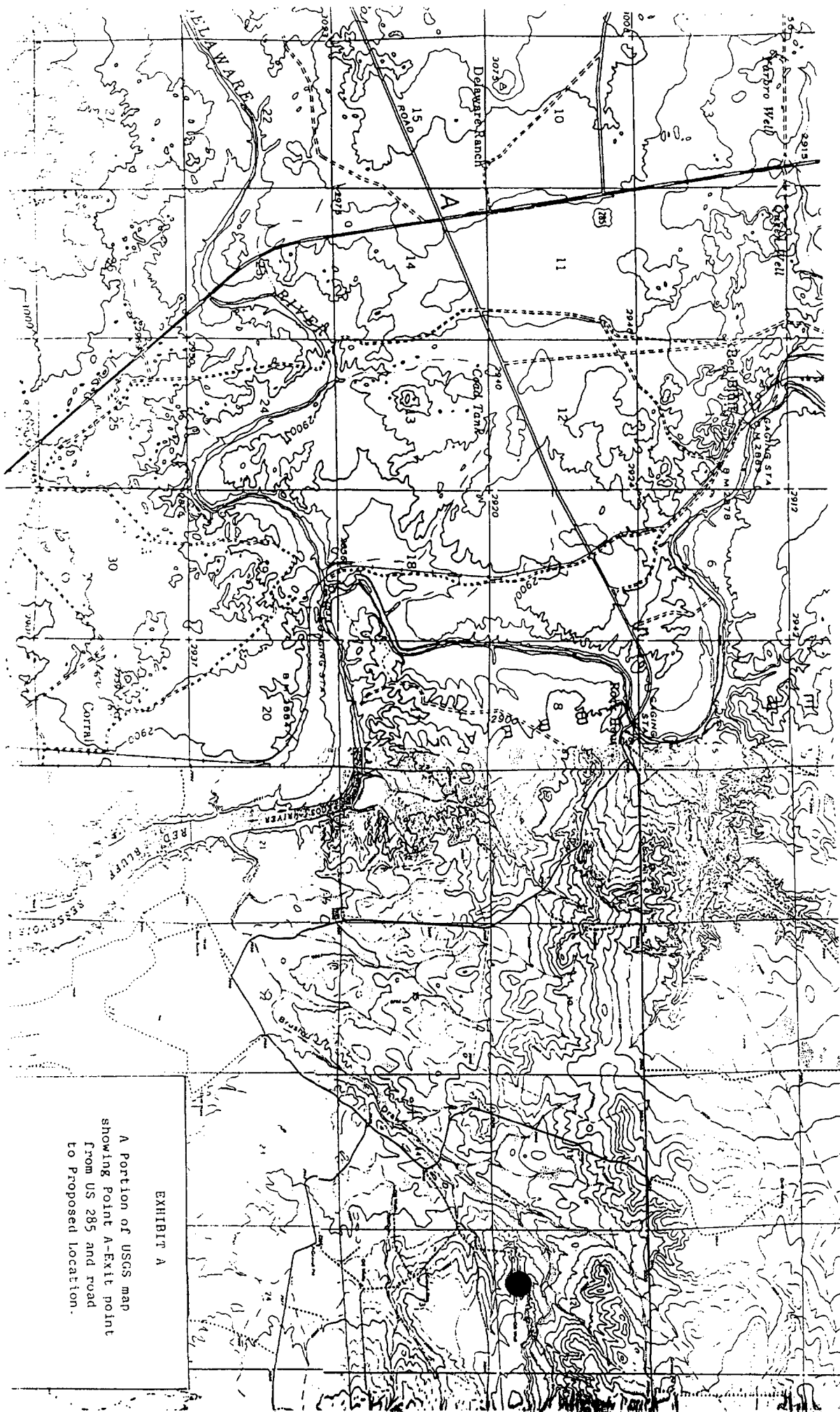


EXHIBIT A  
A Portion of USGS map  
showing Point A-Exit point  
from US 285 and road  
to Proposed location.

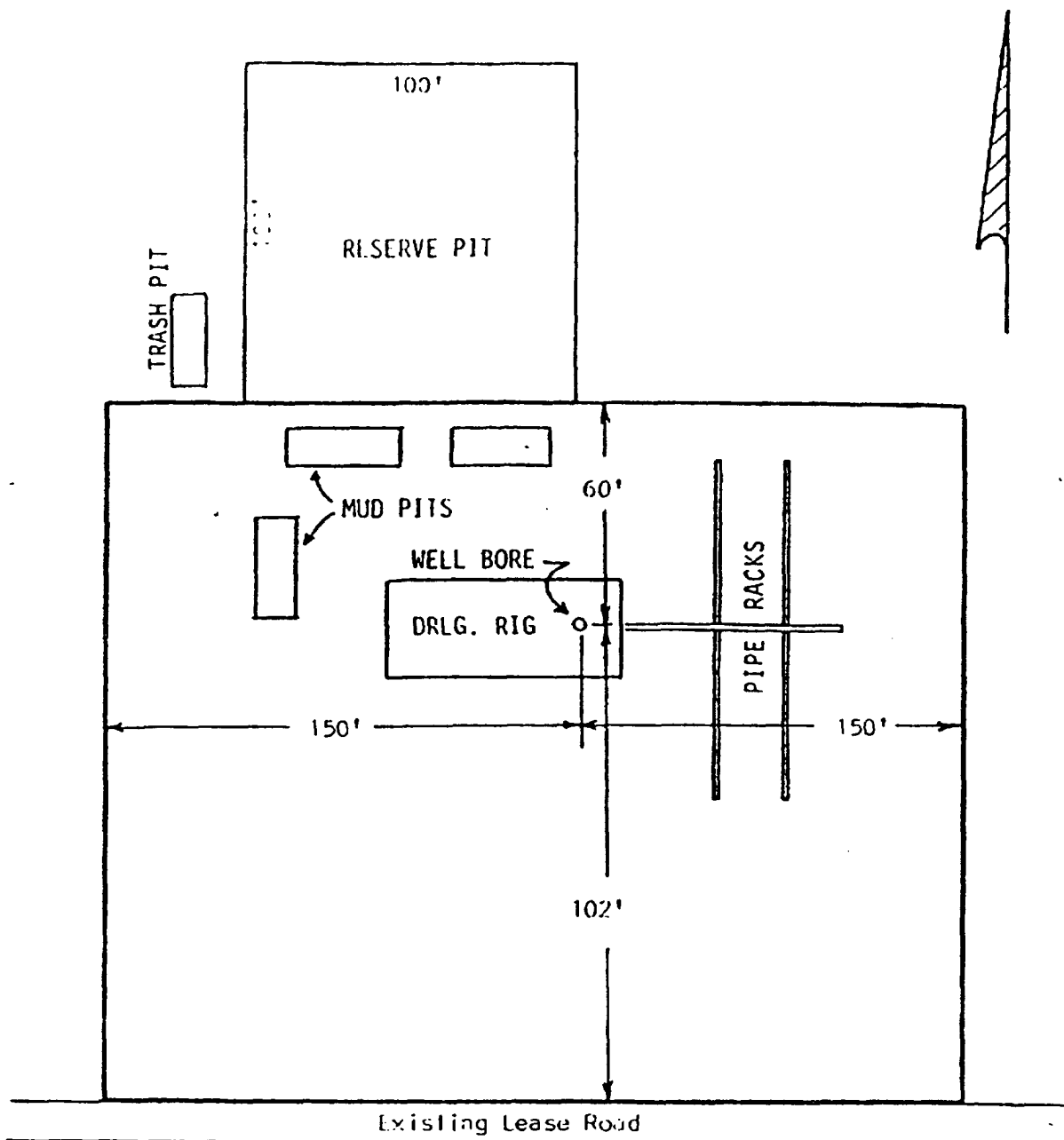


Exhibit " D"  
 SKETCH OF WELL PAD  
 The Petroleum Corporation  
 of Delaware  
 Well #1 Brushy Federal 12  
 SE SW 12-26S-29E