

Submit 1 Copy To Appropriate District
Office
District I - (575) 393-6161
1625 N. French Dr., Hobbs, NM 88240
District II - (575) 748-1283
811 S. First St., Artesia, NM 88210
District III - (505) 334-6178
1000 Rio Brazos Rd., Aztec, NM 87410
District IV - (505) 476-3460
1220 S. St. Francis Dr., Santa Fe, NM
87505

State of New Mexico
Energy, Minerals and Natural Resources

Form C-103
Revised July 18, 2013

OIL CONSERVATION DIVISION
1220 South St. Francis Dr.
Santa Fe, NM 87505

SUNDRY NOTICES AND REPORTS ON WELLS (DO NOT USE THIS FORM FOR PROPOSALS TO DRILL OR TO DEEPEN OR PLUG BACK TO A DIFFERENT RESERVOIR. USE "APPLICATION FOR PERMIT" (FORM C-101) FOR SUCH PROPOSALS.)		WELL API NO. 30-015-29590
1. Type of Well: Oil Well <input checked="" type="checkbox"/> Gas Well <input type="checkbox"/> Other INJECTION		5. Indicate Type of Lease STATE <input checked="" type="checkbox"/> FEE <input type="checkbox"/>
2. Name of Operator LINN OPERATING, INC.		6. State Oil & Gas Lease No.
3. Address of Operator 600 TRAVIS, SUITE 5100, HOUSTON, TEXAS 77002		7. Lease Name or Unit Agreement Name BARCLAY STATE
4. Well Location Unit Letter <u>J</u> :1980 feet from the <u>S</u> line and 1980 feet from the <u>E</u> line Section <u>02</u> Township <u>23S</u> Range <u>31E</u> NMPM <u>EDDY</u> County		8. Well Number 002
11. Elevation (Show whether DR, RKB, RT, GR, etc.) 3436' GL		9. OGRID Number 269324
		10. Pool name or Wildcat LIVINGSTON RIDGE;DELAWARE, SOUTH

12. Check Appropriate Box to Indicate Nature of Notice, Report or Other Data

NOTICE OF INTENTION TO:
PERFORM REMEDIAL WORK ☐ PLUG AND ABANDON ☒
TEMPORARILY ABANDON ☐ CHANGE PLANS ☐
PULL OR ALTER CASING ☐ MULTIPLE COMPL ☐
DOWNHOLE COMMINGLE ☐
CLOSED-LOOP SYSTEM ☐
OTHER: ☐

SUBSEQUENT REPORT OF:
REMEDIAL WORK ☐ ALTERING CASING ☐
COMMENCE DRILLING OPNS. ☐ P AND A ☐
CASING/CEMENT JOB ☐
OTHER: ☐

13. Describe proposed or completed operations. (Clearly state all pertinent details, and give pertinent dates, including estimated date of starting any proposed work). SEE RULE 19.15.7.14 NMAC. For Multiple Completions: Attach wellbore diagram of proposed completion or recompletion.

LINN PROPOSES TO PLUG THIS WELL. PLEASE SEE ATTACHED PROPOSED PLUGGING PROCEDURE ALONG WITH THE CURRENT AND PROPOSED WELL BORE DIAGRAMS.

Spud Date:

Rig Release Date:

well bore must be plugged by 7-8-2016

I hereby certify that the information above is true and complete to the best of my knowledge and belief.

SIGNATURE Laura A. Moreno TITLE REG COMPLIANCE ADVISOR DATE 7-07-2015

Type or print name LAURA A. MORENO E-mail address: lmoreno@linnenergy.com PHONE: 713-904-6657

For State Use Only

APPROVED BY: JD Wade TITLE Dist. Supervisor DATE July 8-2015

Conditions of Approval (if any):

see Attached COA's

Approved for plugging of well bore only.
Liability under bond is retained pending receipt
of C-103 (Subsequent Report of Well Plugging)
which may be found at OCD Web Page under
Forms, www.emnrd.state.nm.us/oed.

NM OIL CONSERVATION
ARTESIA DISTRICT

JUL 07 2015

RECEIVED

BARCLAY STATE #002
(API 30-015-29590)
PROPOSED PA PROCEDURE

- 1) Set packer @5400'. Pressure test casing. Establish injection rate.
- 2) Pump 250 sx cement. WOC. Check for injection rate. If no rate, release packer and tag cement. If injection rate established, pump 100n sx cement, WOC and repeat.
- 3) Circulate hole w/mud laden fluid.
- 4) Perf & Sqz 45 sx cement @ 4575'. WOC & Tag above 4500'.
- 5) Perf & Sqz 30 sx cement @ 2750'. WOC & Tag.
- 6) Perf & Sqz 100 sx cement and circulate to surface.
- 7) Cut off wellhead and weld on dry hole maker.



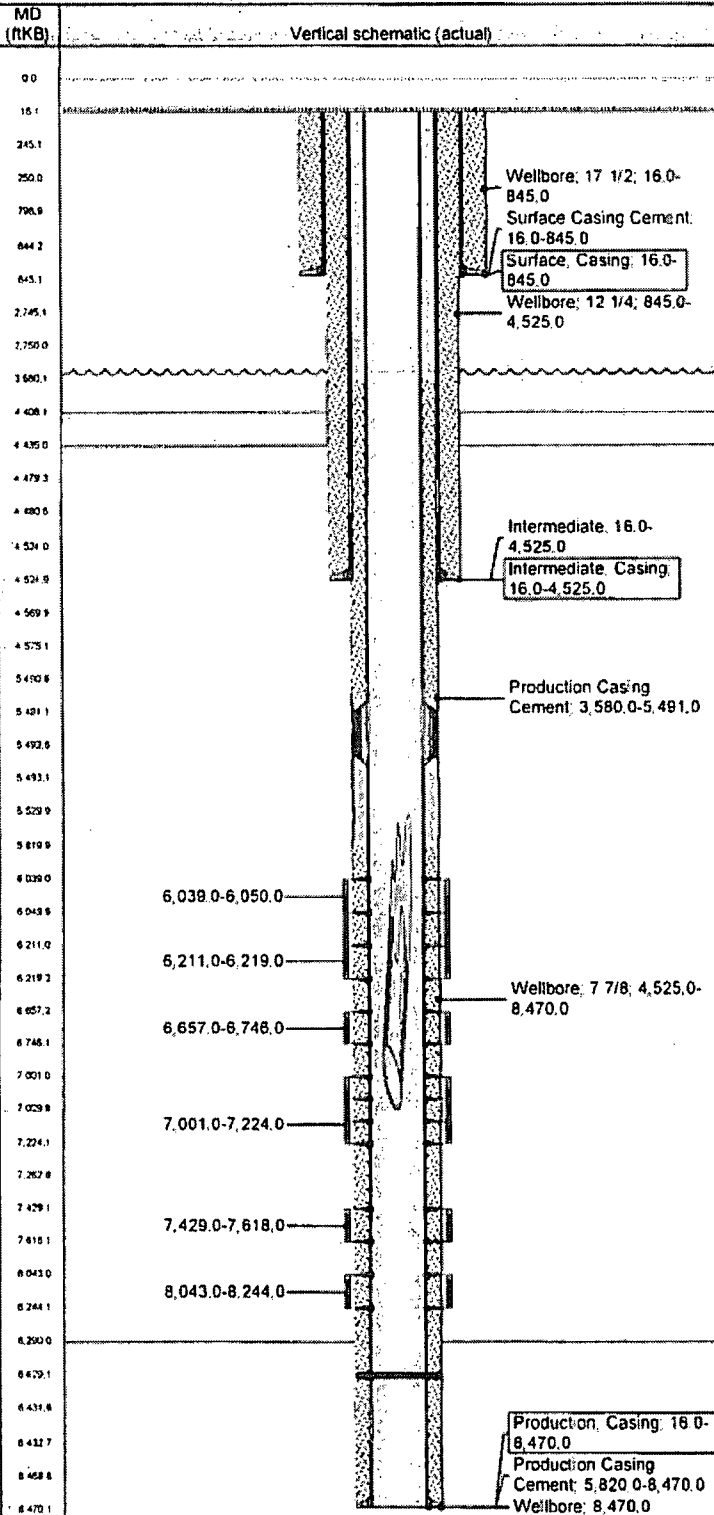
NM Sundry Schematic

Well Name: BARCLAY STATE 02

APDUWI 3001529590	Field Name PBNM - PB-BARCLAY	County Eddy	State/Prov NM	Section 2	Township 023-S	Range 031-E	Survey	Block
Ground Elevation (ft) 3,436.00	Orig KB Elev. (ft) 3,452.00	KB-Grid (ft) 16.00	Initial Spud Date 8/5/1997	R/g Release Date	TD Date 8/18/1997	Latitude (°) 32° 19' 53.986" N	Longitude (°) 103° 44' 47.03" W	Operated? Yes

Original Hole, 7/7/2015 3:09:27 PM

Original Hole Data



Depth (ftB)		Annotation			
Casing Strings					
Run Date	Casing Description	Set Depth (ftB)			
8/6/1997	Surface	845.0			
Run Date	Casing Description	Set Depth (ftB)			
8/11/1997	Intermediate	4,525.0			
Run Date	Casing Description	Set Depth (ftB)			
8/20/1997	Production	8,470.0			
Cement Stages					
Des	Top (ftB)	Bot (ftB)	Com		
Surface Casing Cement	16.0	845.0	CEMENT W/ 775 SXS CLASS 'C' TO SURFACE		
Intermediate	16.0	4,525.0	CEMENT W/ 1300 SXS CLASS 'C' TO SURFACE		
Production Casing Cement	5,820.0	8,470.0	TOC 3580' RAN BY TEMP SURVEY ON 8/20/1997. CEMENT W/ 875 SXS 'C' CMT. DV TOOL AT 5491'		
Production Casing Cement	3,580.0	5,491.0	TOC 3580' RAN BY TEMP SURVEY ON 8/20/1997. CEMENT W/ 875 SXS 'C' CMT. DV TOOL AT 5491'		
Tubing Strings					
Tubing Description	Run Date	Set Depth (ftB)			
Tubing - Production	8/7/2008	8,221.0			
Other In Hole					
Description	Top (ftB)	Bot (ftB)	OD (in)	Run Date	Comment
DV Tool	5,491.0	5,493.0	5 1/2	8/20/1997	
Description	Top (ftB)	Bot (ftB)	OD (in)	Run Date	Comment
Bridge Plug - Temporary	7,850.0	7,853.0	4.8	10/30/1997	
Description	Top (ftB)	Bot (ftB)	OD (in)	Run Date	Comment
Bridge Plug - Temporary	7,350.0	7,353.0	4.8	11/1/1997	
Description	Top (ftB)	Bot (ftB)	OD (in)	Run Date	Comment
Bridge Plug - Permanent	6,960.0	6,963.0	4.8	6/21/1998	
Description	Top (ftB)	Bot (ftB)	OD (in)	Run Date	Comment
Bridge Plug - Temporary	6,270.0	6,273.0	4.8	6/23/1998	
Description	Top (ftB)	Bot (ftB)	OD (in)	Run Date	Comment
Tubing Fish	5,530.0	7,030.0	2 7/8	9/2/2014	
Formations					
Formation	Drill Top MD (ftB)		Drill Bot MD (ftB)		
BOTTOM SALT					
Formation	Drill Top MD (ftB)		Drill Bot MD (ftB)		
DELAWARE SAND					
Formation	Drill Top MD (ftB)		Drill Bot MD (ftB)		
BONE SPRINGS					



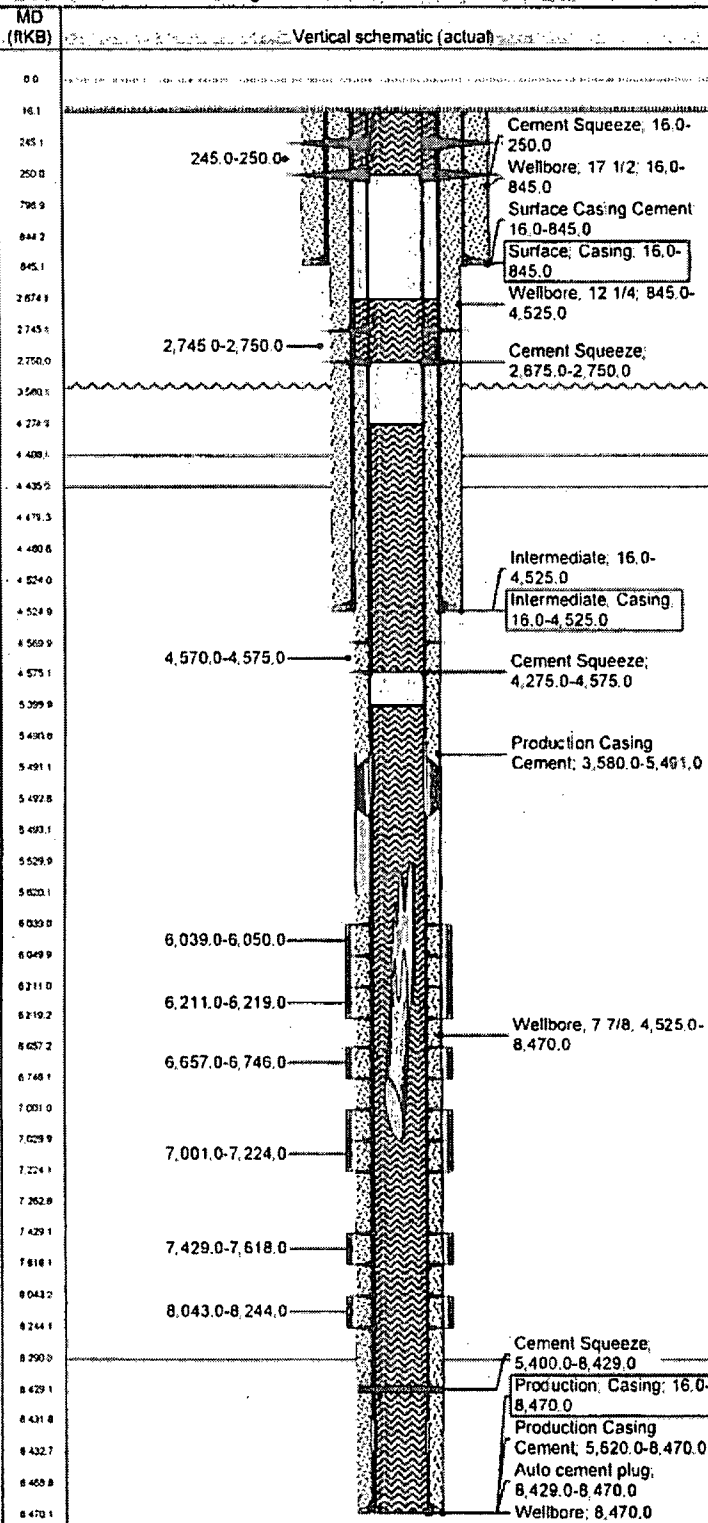
NM Sundry Schematic

Well Name: BARCLAY STATE 02

API/Well	Field Name	County	State/Prov	Section	Township	Range	Survey	Block
3001529590	PBNM - PB-BARCLAY	Eddy	NM	2	023-S	031-E		
Ground Elevation (ft)	Orig KB Elev (ft)	KB-Grid (ft)	Initial Spud Date	Rq Release Date	TD Date	Latitude (°)	Longitude (°)	Operated?
3,436.00	3,452.00	16.00	8/5/1997		8/18/1997	32° 19' 53.986" N	103° 44' 47.03" W	Yes

Original Hole, 7/7/2015 3:04:29 PM

Original Hole Data



Depth (ftKB)	Annotation

Casing Strings		
Run Date	Casing Description	Set Depth (ftKB)
8/6/1997	Surface	845.0
8/11/1997	Intermediate	4,525.0
8/20/1997	Production	8,470.0

Des	Top (ftKB)	Btm (ftKB)	Com
Surface Casing Cement	16.0	845.0	CEMENT W/ 775 SXS CLASS 'C' TO SURFACE
Intermediate	16.0	4,525.0	CEMENT W/ 1300 SXS CLASS 'C' TO SURFACE
Production Casing Cement	5,620.0	8,470.0	TOC 3580' RAN BY TEMP SURVEY ON 8/20/1997. CEMENT W/ 875 SXS 'C' CMT. DV TOOL AT 5491'. STAGE 1 TOC PREVIOUSLY ENTERED.
Production Casing Cement	3,580.0	5,491.0	TOC 3580' RAN BY TEMP SURVEY ON 8/20/1997. CEMENT W/ 875 SXS 'C' CMT. DV TOOL AT 5491'
Cement Squeeze	5,400.0	8,429.0	PROPOSED - Pump 250 sks cmt. Add 100 sks until cannot establish injection rate.
Cement Squeeze	4,275.0	4,575.0	PROPOSED - Perf & sqz 45 sks cmt. Tag above 4500'.
Cement Squeeze	2,675.0	2,750.0	PROPOSED - Perf & sqz 30 sks cmt.
Cement Squeeze	16.0	250.0	PROPOSED - Perf & sqz 100 sks cmt. Circ to surface.

Tubing Strings		
Tubing Description	Run Date	Set Depth (ftKB)
Tubing - Production	8/7/2008	8,221.0

Other In Hole					
Description	Top (ftKB)	Btm (ftKB)	OD (in)	Run Date	Comment
DV Tool	5,491.0	5,493.0	5 1/2	8/20/1997	
Bridge Plug - Temporary	7,850.0	7,853.0	4.8	10/30/1997	
Bridge Plug - Temporary	7,350.0	7,353.0	4.8	11/1/1997	
Bridge Plug - Permanent	6,960.0	6,963.0	4.8	6/21/1998	
Bridge Plug - Temporary	6,270.0	6,273.0	4.8	6/23/1998	
Tubing Fish	5,530.0	7,030.0	2 7/8	9/2/2014	

NEW MEXICO OIL CONSERVATION DIVISION
DISTRICT 2 OFFICE
811 S. FIRST STREET
ARTESIA, NM 88210
(575)748-1283

CONDITIONS OF APPROVAL FOR PLUGGING & ABANDONMENT

Operator: Linn Op.

Well Name & Number: Bayley State #2

API #: 30-05-29590

1. Produced water **will not** be used during any part of the plugging & abandonment operation.
2. Notify NMOCD Dist. 2 office at least 24 hrs before beginning work.
3. Closed Loop System is to be used for entire plugging operation. Upon completion, contents of steel pit are to be hauled to a permitted disposal location.
4. Trucking companies being used to haul oilfield waste fluids to a disposal – commercial or private – shall have an approved NMOCD C-133 permit. A copy of this permit shall be available in each truck used to haul waste products. It is the responsibility of the operator, as well as the contractor, to verify that this permit is place prior to performing work. Drivers shall produce a copy upon request of NMOCD Field Inspectors.
5. A subsequent C-103 will serve as notification that the well bore has been plugged ONLY. A C-103 FINAL shall be filed before any bonding can be released on the well. Upon receipt of the Final, an inspection will be performed to verify that the location has been satisfactorily cleaned to NMOCD standards.
6. If work has not begun within 90 days of the approval of this procedure, an extension request must be filed, stating reason that well has not been plugged.
7. Every attempt must be made to clean the well bore out to below the perfs, before any plugs can be set, by whatever means possible.
8. Cement Retainers may not be used.
9. Squeeze pressures are not to exceed 500 PSI, unless approval is given by NMOCD.
10. Plugs may be combined after consulting with and getting approval from NMOCD.
11. Minimum WOC time for tag plugs will be 4 Hrs.

AD

7-8-2015

GUIDELINES FOR PLUGGING AND ABANDONMENT

DISTRICT II / ARTESIA

- All cement plugs will be a minimum of 100' in length or a minimum of 25 sacks of cement, whichever is greater.
- Mud laden fluids must be placed between all cement plugs.
- Mud laden fluids must be mixed at 25 sacks of gel per 100 bbls of water.
- A cement plug is required to be set 50' below and 50' above all casing shoes and casing stub plugs. These plugs must be tagged.
- A CIBP with 35' of cement on top may be set in lieu of 100' cement plug.
- A plug as indicated above must be placed within 100' of top perforation. This plug must be tagged.
- Plugs set below and above salt zones must be tagged.
- No more than 2000' is to be allowed between cement plugs in open hole and no more than 3000' in cased hole.
- DV tools are required to have a 100' cement plug set 50' above and below the tool and must be tagged.
- Formations to be isolated with plugs placed at the top of each formation are:
 - Fusselman
 - Devonian
 - Morrow
 - Wolfcamp
 - Bone Spring
 - Delaware
 - Any Salt Section (Plug at top and bottom)
 - Abo
 - Glorieta
 - Yates (this plus is usually at base of salt section)
- If cement does not exist behind casing strings at recommended formation depths, the casing must be cut and pulled with plugs set at these depths or casing must be perforated and cement squeezed behind casing at the formation depths.
- In the R-111-P area (Potash Mine area) a solid cement plug must be set across the salt section. Fluid used to mix the cement shall be saturated with the salts common to the section penetrated and in suitable proportions, but not more than a 3% calcium chloride by weight of cement will be considered the desired mixture whenever possible (50' below and 50' above).