

Submit 1 Copy To Appropriate District  
Office  
District I - (575) 393-6161  
1625 N. French Dr., Hobbs, NM 88240  
District II - (575) 748-1283  
811 S. First St., Artesia, NM 88210  
District III - (505) 334-6178  
1000 Rio Brazos Rd., Aztec, NM 87410  
District IV - (505) 476-3460  
1220 S. St. Francis Dr., Santa Fe, NM  
87505

State of New Mexico  
Energy, Minerals and Natural Resources

Form C-103  
Revised July 18, 2013

OIL CONSERVATION DIVISION  
1220 South St. Francis Dr.  
Santa Fe, NM 87505

WELL API NO. 30-015-42321
5. Indicate Type of Lease STATE <input checked="" type="checkbox"/> FEE <input type="checkbox"/>
6. State Oil & Gas Lease No.
7. Lease Name or Unit Agreement Name Cottontail 16 State Com
8. Well Number 1H
9. OGRID Number 6137
10. Pool name or Wildcat Willowlake; Bone Spring, SE
11. Elevation (Show whether DR, RKB, RT, GR, etc.) 2968.6' GL

SUNDRY NOTICES AND REPORTS ON WELLS  
(DO NOT USE THIS FORM FOR PROPOSALS TO DRILL OR TO DEEPEN OR PLUG BACK TO A  
DIFFERENT RESERVOIR. USE "APPLICATION FOR PERMIT" (FORM C-101) FOR SUCH  
PROPOSALS.)

1. Type of Well: Oil Well ☒ Gas Well ☐ Other

2. Name of Operator  
Devon Energy Production Company, LP 405-228-7203

3. Address of Operator  
333 West. Sheridan Avenue  
Oklahoma City, OK 73102-5015 405-228-7203

4. Well Location  
Unit Letter O : 150 feet from the SOUTH line and 1950 feet from the EAST line  
Section 16 Township 25S Range 29E NMPM Eddy County

12. Check Appropriate Box to Indicate Nature of Notice, Report or Other Data

NOTICE OF INTENTION TO:

PERFORM REMEDIAL WORK ☐ PLUG AND ABANDON ☐  
TEMPORARILY ABANDON ☐ CHANGE PLANS ☐  
PULL OR ALTER CASING ☐ MULTIPLE COMPL ☐  
DOWNHOLE COMMINGLE ☐  
CLOSED-LOOP SYSTEM ☐

OTHER: Property Code Change ☒

SUBSEQUENT REPORT OF:

REMEDIAL WORK ☐ ALTERING CASING ☐  
COMMENCE DRILLING OPNS. ☐ P AND A ☐  
CASING/CEMENT JOB ☐

OTHER: ☐

13. Describe proposed or completed operations. (Clearly state all pertinent details, and give pertinent dates, including estimated date of starting any proposed work). SEE RULE 19.15.7.14 NMAC. For Multiple Completions: Attach wellbore diagram of proposed completion or recompletion.

In order to drill for this well to be subject to the previously approved communitization agreement for the Cooter 16 State 5H, Devon Energy Production Co. L.P. respectfully requests to change the property code from 40505 to 314233.

Attached is a revised C-102

eff 4-2-15

I hereby certify that the information above is true and complete to the best of my knowledge and belief.

SIGNATURE Trina C. Couch TITLE: Regulatory Analyst DATE 7/15/2015

Type or print name: Trina C. Couch E-mail address: trina.couch@dyn.com PHONE: 405-228-7203

For State Use Only

APPROVED BY: [Signature] TITLE Dist. Reg. Supervisor DATE 7/15/2015

Conditions of Approval (if any):

District I  
1625 N. French Dr., Hobbs, NM 88240  
Phone: (575) 393-6161 Fax: (575) 393-0720  
District II  
811 S. First St., Artesia, NM 88210  
Phone: (575) 748-1283 Fax: (575) 748-9720  
District III  
1000 Rio Brazos Road, Aztec, NM 87410  
Phone: (505) 334-6176 Fax: (505) 334-6170  
District IV  
1220 S. St. Francis Dr., Santa Fe, NM 87505  
Phone: (505) 476-3460 Fax: (505) 476-3462

State of New Mexico  
Energy, Minerals & Natural Resources Department  
OIL CONSERVATION DIVISION  
1220 South St. Francis Dr.  
Santa Fe, NM 87505

Form C-102  
Revised August 1, 2011  
Submit one copy to appropriate  
District Office

☐ AMENDED REPORT

WELL LOCATION AND ACREAGE DEDICATION PLAT

<sup>1</sup> API Number 30-015-42321		<sup>2</sup> Pool Code 96217		<sup>3</sup> Pool Name Willowlake; Bone Spring SE	
<sup>4</sup> Property Code 314233		<sup>5</sup> Property Name COTTONTAIL 16 STATE COM			<sup>6</sup> Well Number 1H
<sup>7</sup> OGRID No. 6137		<sup>8</sup> Operator Name DEVON ENERGY PRODUCTION COMPANY, L.P.			<sup>9</sup> Elevation 2968.6

<sup>10</sup> Surface Location

UL or lot no.	Section	Township	Range	Lot Idn	Feet from the	North/South line	Feet from the	East/West line	County
O	16	25 S	29 E		150	SOUTH	1950	EAST	EDDY

<sup>11</sup> Bottom Hole Location If Different From Surface

UL or lot no.	Section	Township	Range	Lot Idn	Feet from the	North/South line	Feet from the	East/West line	County
B	16	25 S	29 E		330	NORTH	1980	EAST	EDDY

<sup>12</sup> Dedicated Acres 160	<sup>13</sup> Joint or Infill	<sup>14</sup> Consolidation Code	<sup>15</sup> Order No.
--------------------------------------	-------------------------------	----------------------------------	-------------------------

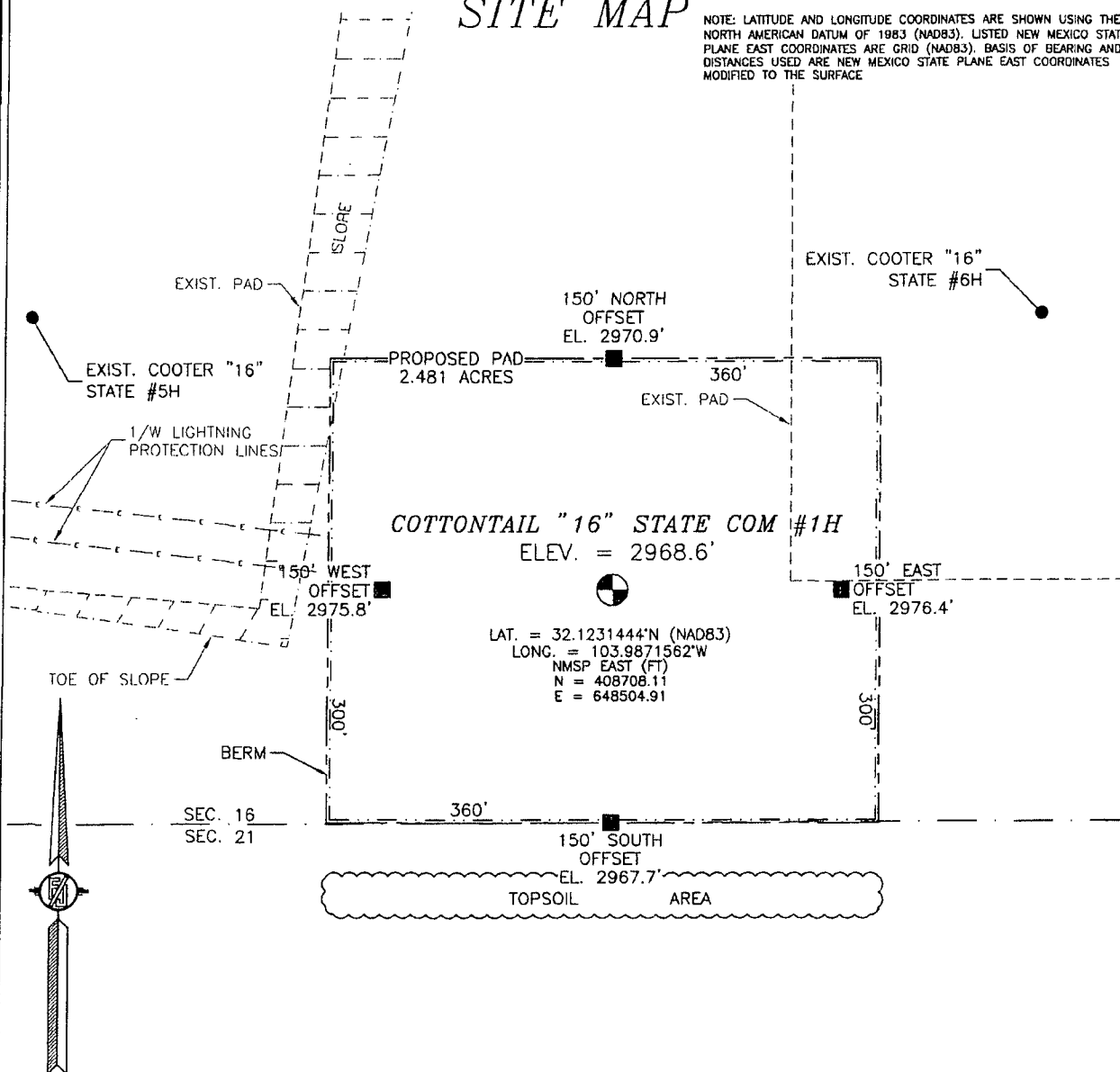
No allowable will be assigned to this completion until all interests have been consolidated or a non-standard unit has been approved by the division.

<p>N89°45'43"E 2656.80 FT</p> <p>NW CORNER SEC. 16 LAT. = 32.1373193°N LONG. = 103.9980876°W</p> <p>NMSP EAST (FT) N = 413853.94 E = 645110.93</p> <p>NOTE: LATITUDE AND LONGITUDE COORDINATES ARE SHOWN USING THE NORTH AMERICAN DATUM OF 1983 (NAD83). LISTED NEW MEXICO STATE PLANE EAST COORDINATES ARE GRID (NAD83). BASIS OF BEARING AND DISTANCES USED ARE NEW MEXICO STATE PLANE EAST COORDINATES MODIFIED TO THE SURFACE.</p> <p>W Q CORNER SEC. 16 LAT. = 32.1300242°N LONG. = 103.9980455°W</p> <p>NMSP EAST (FT) N = 411200.17 E = 645126.04</p> <p>SW CORNER SEC. 16 LAT. = 32.1227221°N LONG. = 103.9980217°W</p> <p>NMSP EAST (FT) N = 408543.86 E = 645141.67</p> <p>S89°45'51"W 2657.61 FT</p>		<p>N89°45'32"E 2654.59 FT</p> <p>N Q CORNER SEC. 16 LAT. = 32.1373268°N LONG. = 103.9891862°W</p> <p>NMSP EAST (FT) N = 413864.98 E = 644767.19</p> <p>NE CORNER SEC. 16 LAT. = 32.1373337°N LONG. = 103.9809121°W</p> <p>NMSP EAST (FT) N = 413876.15 E = 650421.04</p> <p>E Q CORNER SEC. 16 LAT. = 32.1300386°N LONG. = 103.9808854°W</p> <p>NMSP EAST (FT) N = 411222.36 E = 650437.97</p> <p>SE CORNER SEC. 16 LAT. = 32.1227403°N LONG. = 103.9808569°W</p> <p>NMSP EAST (FT) N = 408567.46 E = 650455.48</p> <p>S89°43'37"W 2657.50 FT</p>		<p><sup>17</sup> OPERATOR CERTIFICATION</p> <p>I hereby certify that the information contained herein is true and complete to the best of my knowledge and belief, and that this organization either owns a working interest or unleased mineral interest in the land including the proposed bottom hole location or has a right to drill this well at this location pursuant to a contract with an owner of such a mineral or working interest, or to a voluntary pooling agreement or a compulsory pooling order heretofore entered by the division.</p> <p><i>Trina C. Couch</i> 7/15/15 Signature Date</p> <p>Trina C. Couch, Regulatory Analyst Printed Name</p> <p>trina.couch@dmv.com E-mail Address</p>
<p>PROJECT AREA</p> <p>PRODUCTION AREA</p> <p>COTTONTAIL "16" STATE COM #1H</p> <p>ELEV. = 2968.6'</p> <p>LAT. = 32.1230444°N (NAD83) LONG. = 103.9871562°W</p> <p>NMSP EAST (FT) N = 408708.11 E = 648504.9</p> <p>SURFACE LOCATION</p> <p>150'</p> <p>1950'</p>		<p><sup>18</sup> SURVEYOR CERTIFICATION</p> <p>I hereby certify that the well location shown on this plat was plotted from field notes of actual surveys made by me or under my supervision, and that the same is true and correct to the best of my belief.</p> <p>JUNE 1, 2013 Date of Survey</p> <p><i>James P. Jarmon</i> Signature and Seal of Professional Surveyor</p> <p>Certificate Number JAR-MEXICO PLS 12797 REGISTERED LAND SURVEYOR NO. 1862</p>		

SECTION 16, TOWNSHIP 25 SOUTH, RANGE 29 EAST, N.M.P.M.  
EDDY COUNTY, STATE OF NEW MEXICO

SITE MAP

NOTE: LATITUDE AND LONGITUDE COORDINATES ARE SHOWN USING THE NORTH AMERICAN DATUM OF 1983 (NAD83). LISTED NEW MEXICO STATE PLANE EAST COORDINATES ARE GRID (NAD83). BASIS OF BEARING AND DISTANCES USED ARE NEW MEXICO STATE PLANE EAST COORDINATES MODIFIED TO THE SURFACE



010 50 100 200

SCALE 1" = 100'

DIRECTIONS TO LOCATION

FROM US HIGHWAY 285 AND CALICHE CR 725 (LONGHORN) GO EAST ON CR 725 APPROX. 4.0 MILES, TURN LEFT ON CALICHE ROAD AND GO NORTHEAST 1.6 MILES, TURN LEFT AND GO NORTH 3.3 MILES, TURN LEFT AND GO NORTHWEST 0.3 MILES, BEND LEFT AND GO SOUTHWEST 350' TO PAD FOR COOTER "16" STATE #6H WELL AND FROM THIS WELL THE LOCATION IS 333' SOUTHWEST.

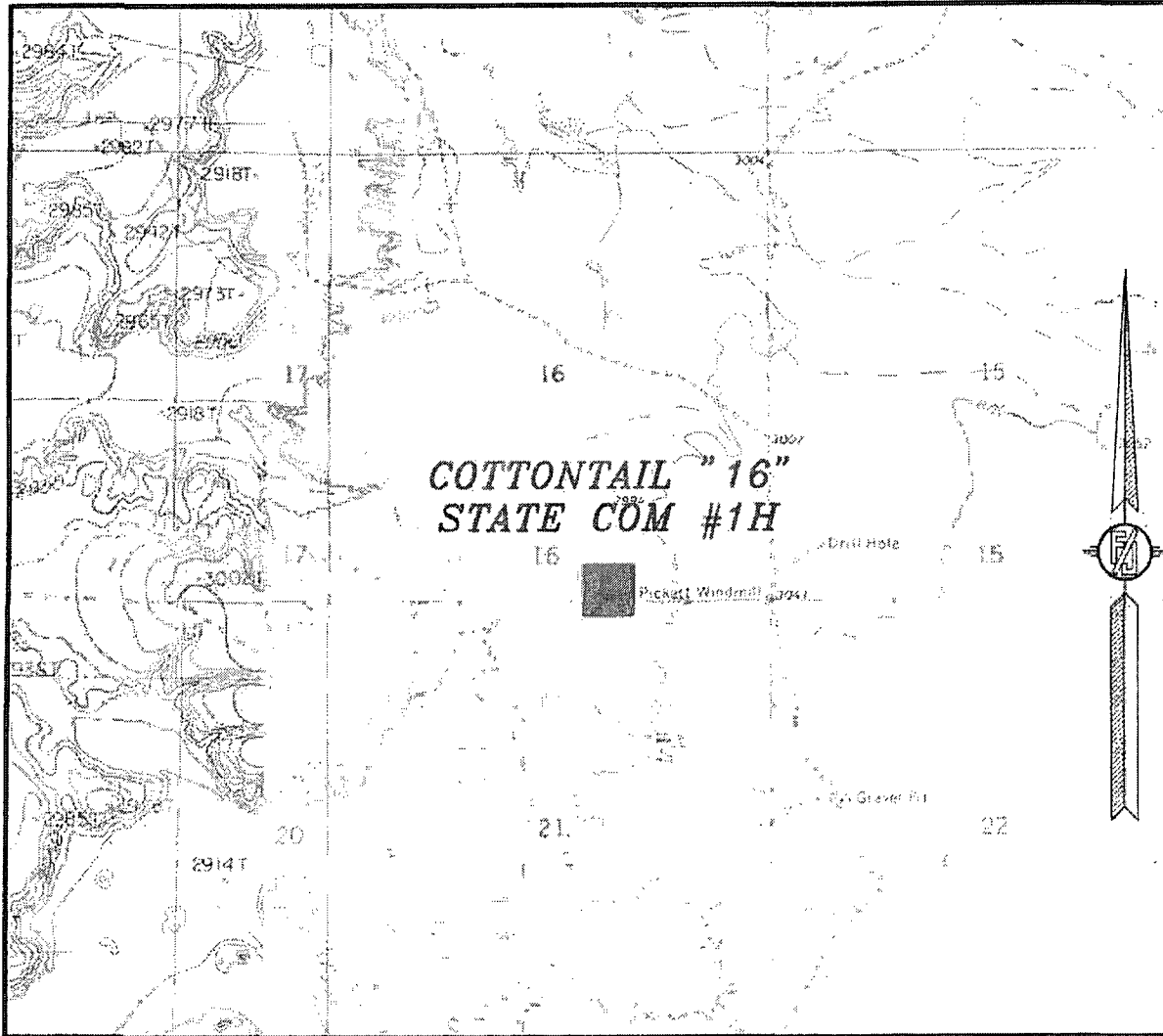
DEVON ENERGY PRODUCTION COMPANY, L.P.  
**COTTONTAIL "16" STATE COM #1H**  
LOCATED 150 FT. FROM THE SOUTH LINE  
AND 1950 FT. FROM THE EAST LINE OF  
SECTION 16, TOWNSHIP 25 SOUTH,  
RANGE 29 EAST, N.M.P.M.  
EDDY COUNTY, STATE OF NEW MEXICO

JUNE 1, 2013

SURVEY NO. 1862

MADRON SURVEYING, INC. 301 SOUTH CANAL CARLSBAD, NEW MEXICO  
(575) 234-3341

SECTION 16, TOWNSHIP 25 SOUTH, RANGE 29 EAST, N.M.P.M.  
EDDY COUNTY, STATE OF NEW MEXICO  
LOCATION VERIFICATION MAP



USGS QUAD MAP:  
PIERCE CANYON

NOT TO SCALE

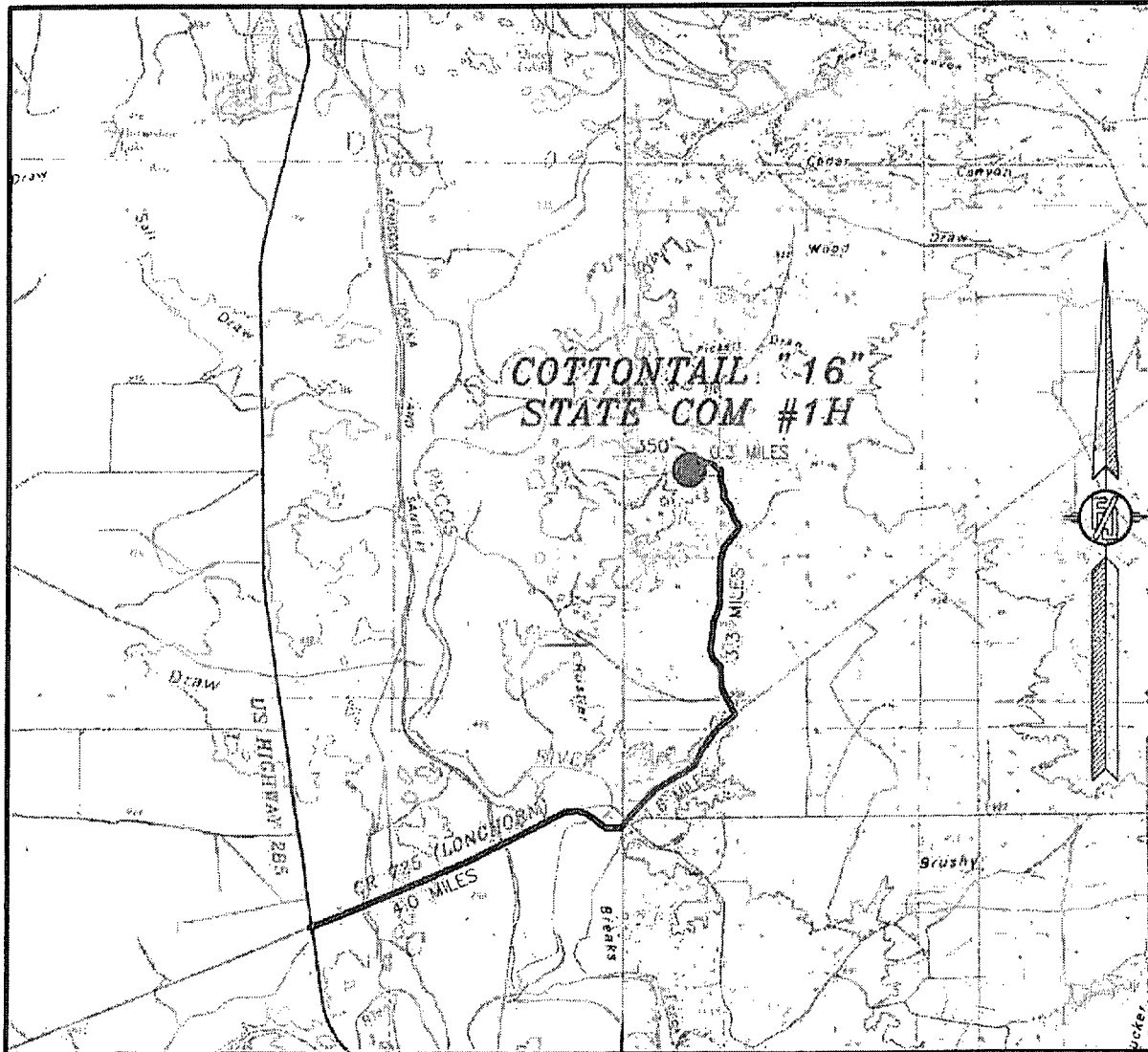
DEVON ENERGY PRODUCTION COMPANY, L.P.  
**COTTONTAIL "16" STATE COM #1H**  
LOCATED 150 FT. FROM THE SOUTH LINE  
AND 1950 FT. FROM THE EAST LINE OF  
SECTION 16, TOWNSHIP 25 SOUTH,  
RANGE 29 EAST, N.M.P.M.  
EDDY COUNTY, STATE OF NEW MEXICO

JUNE 1, 2013

SURVEY NO. 1862

MADRON SURVEYING, INC. 301 SOUTH CANAL CARLSBAD, NEW MEXICO  
(575) 234-3341

SECTION 16, TOWNSHIP 25 SOUTH, RANGE 29 EAST, N.M.P.M.  
EDDY COUNTY, STATE OF NEW MEXICO  
VICINITY MAP



NOT TO SCALE

DEVON ENERGY PRODUCTION COMPANY, L.P.

**COTTONTAIL "16" STATE COM #1H**

LOCATED 150 FT. FROM THE SOUTH LINE  
AND 1950 FT. FROM THE EAST LINE OF  
SECTION 16, TOWNSHIP 25 SOUTH,  
RANGE 29 EAST, N.M.P.M.  
EDDY COUNTY, STATE OF NEW MEXICO

**DIRECTIONS TO LOCATION**

FROM US HIGHWAY 285 AND CALICHE CR 725 (LONGHORN) GO EAST  
ON CR 725 APPROX. 4.0 MILES. TURN LEFT ON CALICHE ROAD AND  
GO NORTHEAST 1.8 MILES. TURN LEFT AND GO NORTH 3.3 MILES.  
TURN LEFT AND GO NORTHWEST 0.3 MILES. BEND LEFT AND GO  
SOUTHWEST 350' TO PAD FOR COTTER "16" STATE #6H WELL AND  
FROM THIS WELL THE LOCATION IS 333' SOUTHWEST.

JUNE 1, 2013

SURVEY NO. 1862

MADRON SURVEYING, INC. 301 SOUTH CANAL CARLSBAD, NEW MEXICO  
(575) 234-3341

SECTION 16, TOWNSHIP 25 SOUTH, RANGE 29 EAST, N.M.P.M.  
EDDY COUNTY, STATE OF NEW MEXICO  
AERIAL PHOTO



NOT TO SCALE  
AERIAL PHOTO:  
GOOGLE EARTH  
JANUARY 2013

DEVON ENERGY PRODUCTION COMPANY, L.P.  
**COTTONTAIL "16" STATE COM #1H**  
LOCATED 150 FT. FROM THE SOUTH LINE  
AND 1950 FT. FROM THE EAST LINE OF  
SECTION 16, TOWNSHIP 25 SOUTH,  
RANGE 29 EAST, N.M.P.M.  
EDDY COUNTY, STATE OF NEW MEXICO

JUNE 1, 2013

SURVEY NO. 1862

MADRON SURVEYING, INC. 301 SOUTH CANAL (575) 234-3341 CARLSBAD, NEW MEXICO