

# NM OIL CONSERVATION

ARTESIA DISTRICT

Form 3160-5  
(August 2007)

UNITED STATES  
DEPARTMENT OF THE INTERIOR  
BUREAU OF LAND MANAGEMENT

JUL 21 2015

FORM APPROVED  
OMB NO. 1004-0135  
Expires: July 31, 2010

**SUNDRY NOTICES AND REPORTS ON WELLS**  
*Do not use this form for proposals to drill or to re-enter an abandoned well. Use form 3160-3 (APD) for such proposals.*

RECEIVED

5. Lease Serial No.  
NMLC054280

6. If Indian, Allottee or Tribe Name

7. If Unit or CA/Agreement, Name and/or No.

8. Well Name and No.  
MCINTYRE A EAST 15

9. API Well No.  
30-015-31854-00-S1

10. Field and Pool, or Exploratory  
LOCO HILLS

11. County or Parish, and State  
EDDY COUNTY, NM

**SUBMIT IN TRIPLICATE - Other instructions on reverse side.**

1. Type of Well

☒ Oil Well ☐ Gas Well ☐ Other

2. Name of Operator  
COG OPERATING LLC

Contact: KANICIA CASTILLO  
E-Mail: kcastillo@concho.com

3a. Address  
ONE CONCHO CENTER 600 W ILLINOIS AVENUE  
MIDLAND, TX 79701

3b. Phone No. (include area code)  
Ph: 432-685-4332

4. Location of Well (Footage, Sec., T., R., M., or Survey Description)

Sec 20 T17S R30E SESE 330FSL 990FEL

**12. CHECK APPROPRIATE BOX(ES) TO INDICATE NATURE OF NOTICE, REPORT, OR OTHER DATA**

TYPE OF SUBMISSION	TYPE OF ACTION			
<input checked="" type="checkbox"/> Notice of Intent	<input type="checkbox"/> Acidize	<input type="checkbox"/> Deepen	<input type="checkbox"/> Production (Start/Resume)	<input type="checkbox"/> Water Shut-Off
<input type="checkbox"/> Subsequent Report	<input type="checkbox"/> Alter Casing	<input type="checkbox"/> Fracture Treat	<input type="checkbox"/> Reclamation	<input type="checkbox"/> Well Integrity
<input type="checkbox"/> Final Abandonment Notice	<input type="checkbox"/> Casing Repair	<input type="checkbox"/> New Construction	<input checked="" type="checkbox"/> Recomplete	<input type="checkbox"/> Other
	<input type="checkbox"/> Change Plans	<input type="checkbox"/> Plug and Abandon	<input type="checkbox"/> Temporarily Abandon	
	<input type="checkbox"/> Convert to Injection	<input type="checkbox"/> Plug Back	<input type="checkbox"/> Water Disposal	

13. Describe Proposed or Completed Operation (clearly state all pertinent details, including estimated starting date of any proposed work and approximate duration thereof. If the proposal is to deepen directionally or recompleate horizontally, give subsurface locations and measured and true vertical depths of all pertinent markers and zones. Attach the Bond under which the work will be performed or provide the Bond No. on file with BLM/BIA. Required subsequent reports shall be filed within 30 days following completion of the involved operations. If the operation results in a multiple completion or recompleation in a new interval, a Form 3160-4 shall be filed once testing has been completed. Final Abandonment Notices shall be filed only after all requirements, including reclamation, have been completed, and the operator has determined that the site is ready for final inspection.)

COG Operating respectfully requests to recompleate this well to the San Andres as follows.

McIntyre A East #15

We are going to set a CIBP at 4551? (50? above the YESO perfs) w/ 40? of CMT on top of the plug to have our PBTD @ 4511?. We plan to have our bottom perfs from 4023?-4202?. Ideally, we like to have 200?-300? of rathole below our bottom perfs to give our bottom hole assembly room and prevent tubing from getting stuck with sand. In addition to having desired rathole space, this gives COG the option to re-enter the Glorieta/Yeso formation at later time.

Equipment Pull Procedure  
? MIRU WSU, NU BOP

SEE ATTACHED FOR  
CONDITIONS OF APPROVAL

RWD 7/21/2015  
Approved for record  
151000

14. I hereby certify that the foregoing is true and correct.

Electronic Submission #289918 verified by the BLM Well Information System  
For COG OPERATING LLC, sent to the Carlsbad  
Committed to AFMSS for processing by JENNIFER MASON on 01/29/2015 (15JAM0204SE)

Name(Printed/Typed) KANICIA CASTILLO

Title PREPARER.

Signature (Electronic Submission)

Date 01/29/2015

THIS SPACE FOR FEDERAL OR STATE OFFICE USE

Approved By

Title

Conditions of approval, if any, are attached. Approval of this notice does not warrant or certify that the applicant holds legal or equitable title to those rights in the subject lease which would entitle the applicant to conduct operations thereon.

Office

BUREAU OF LAND MANAGEMENT  
CARLSBAD FIELD OFFICE

Title 18 U.S.C. Section 1001 and Title 43 U.S.C. Section 1212, make it a crime for any person knowingly and willfully to make to any department or agency of the United States any false, fictitious or fraudulent statements or representations as to any matter within its jurisdiction.

\*\* BLM REVISED \*\* BLM REVISED \*\* BLM REVISED \*\* BLM REVISED \*\* BLM REVISED \*\*

**Additional data for EC transaction #289918 that would not fit on the form**

**32. Additional remarks, continued**

- ? Unset pump and POOH with rod
- ? Tag for fill with tubing and POOH and bail if needed
- ? PU scraper and scrape down to 4600?
- ? POOH with tubing LD
- ? RU Wireline
- ? Set CIBP @ 4551?
- ? Wireline truck dump 40? Class C cement of top of CIBP
- ? Tag cement plug to verify depth of 4511?
- ? Pull up 4? to circulate hole clean with fresh water, and displace w/ 2% KCL and 1% packer corrosion inhibitor.
- ? Test Casing to 4,200 psi (max pressure for frac) and report back to engineering if the pressure holds.
- ? Secure wellbore
- ? RDMO WSU

**Tentative Recompletion Procedure**

- ? NU frac valve, and test casing to 4200 psi
- ? Rig up wireline.
- ? RIH w/ perforating guns and perforate San Andres Zone from 3366?-4202?, w/ 3 spf, 60? phasing, 54 holes.
- ? Acidize w/ 1500 gals of 15% HCl.
- ? Frac zone w/ 440,000 # of sand.
- ? Record ISIP and FG, Get 5, 10, 15 min SIP
- ? Rig up Wireline
- ? Clean out fill to new PBD @ 4511?
- ? RIH with production tubing and locate intake at 4250?.
- ? Set TAC @ 3300?
- ? RIH w/ rods and pump.
- ? RDMO rig.

### **McIntyre A East #15**

We are going to set a CIBP at 4551' (50' above the YESO perms) w/ 40' of CMT on top of the plug to have our PBTB @ 4511'. We plan to have our bottom perms from 4023'-4202'. Ideally, we like to have 200'-300' of rathole below our bottom perms to give our bottom hole assembly room and prevent tubing from getting stuck with sand. In addition to having desired rathole space, this gives COG the option to re-enter the Glorietta/Yeso formation at later time.

### **Equipment Pull Procedure**

- MIRU WSU, NU BOP
- Unset pump and POOH with rod
- Tag for fill with tubing and POOH and bail if needed
- PU scraper and scrape down to 4600'
- POOH with tubing LD
- RU Wireline
- Set CIBP @ 4551'
- Wireline truck dump 40' Class C cement of top of CIBP
- Tag cement plug to verify depth of 4511'
- Pull up 4' to circulate hole clean with fresh water, and displace w/ 2% KCL and 1% packer corrosion inhibitor.
- Test Casing to 4,200 psi (max pressure for frac) and report back to engineering if the pressure holds.
- Secure wellbore
- RDMO WSU

### **Tentative Recompletion Procedure**

- NU frac valve, and test casing to 4200 psi
- Rig up wireline.
- RIH w/ perforating guns and perforate San Andres Zone from 3366'-4202', w/ 3 spf, 60° phasing, 54 holes.
- Acidize w/ 1500 gals of 15% HCl.
- Frac zone w/ 440,000 # of sand.
- Record ISIP and FG, Get 5, 10, 15 min SIP
- Rig up Wireline
- Clean out fill to new PBTB @ 4511'
- RIH with production tubing and locate intake at 4250'
- Set TAC @ 3300'
- RIH w/ rods and pump.
- RDMO rig.

JUL 21 2015

RECEIVED

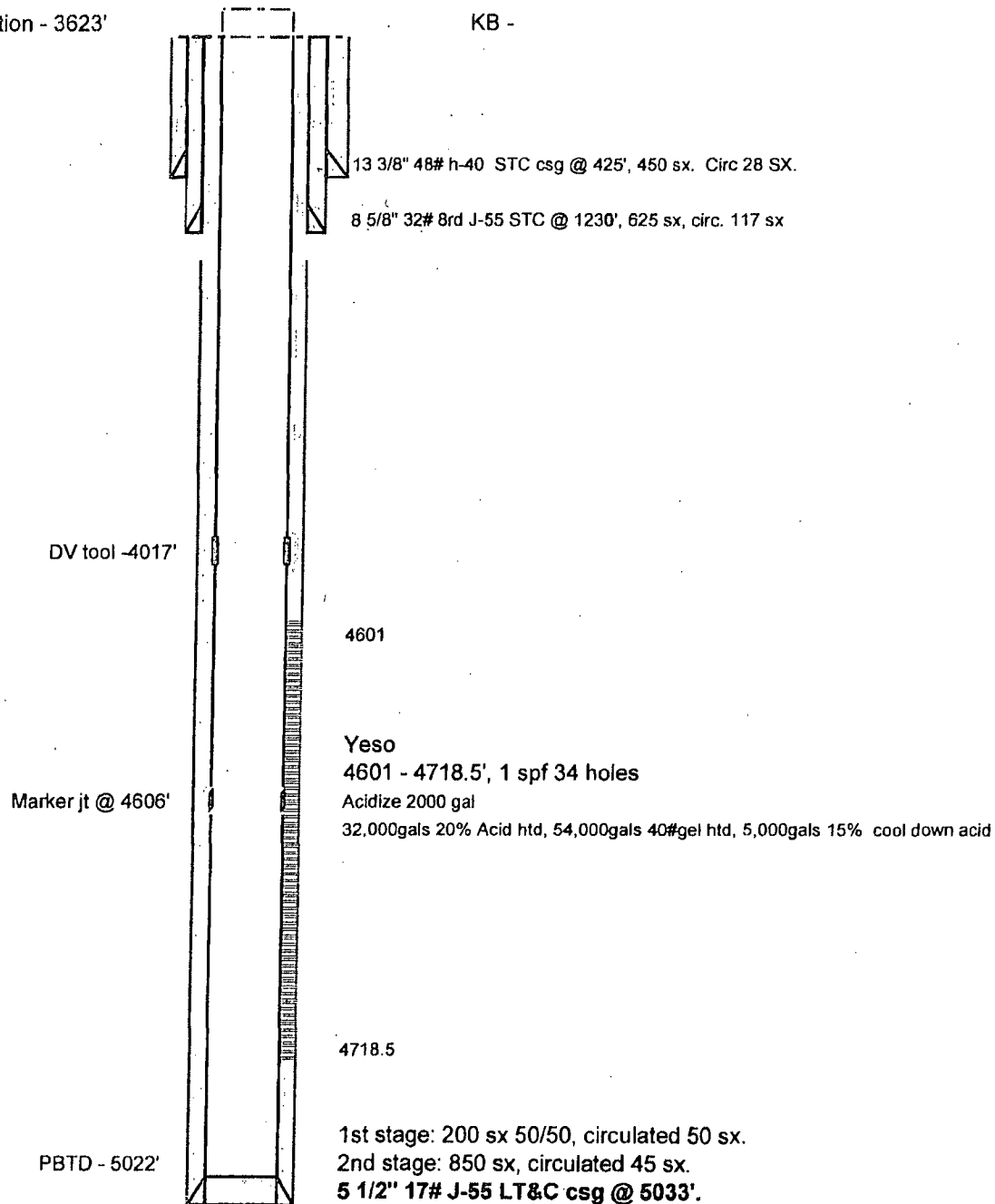
COG Operating LLC

Lease & Well # McIntyre A East #15

Spud: 8/1/01

Elevation - 3623'

KB -



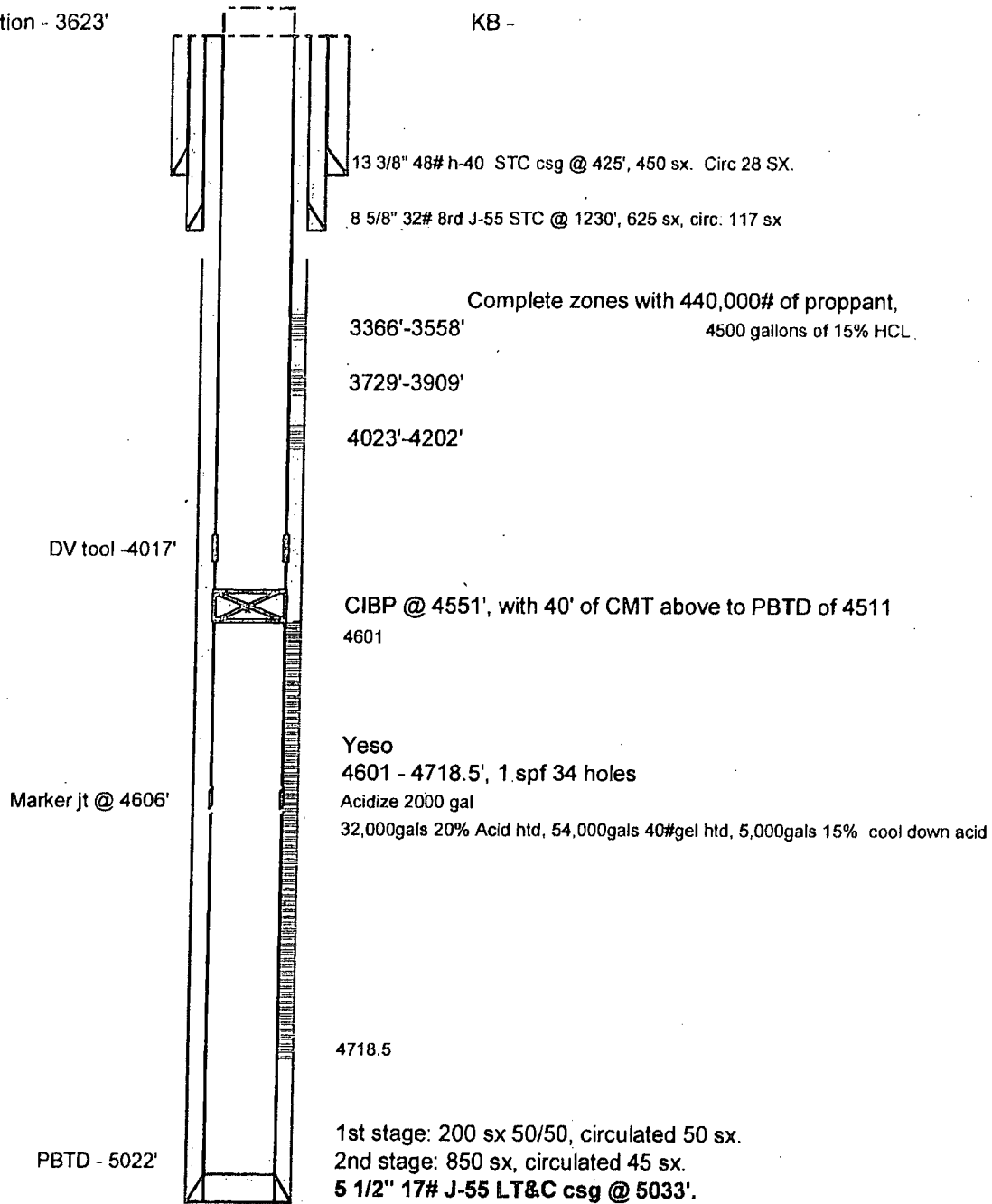
# COG Operating LLC

Lease & Well # McIntyre A East #15

Spud: 8/1/01

Elevation - 3623'

KB -



# NM OIL CONSERVATION

ARTESIA DISTRICT

JUL 21 2015

District I  
1625 N. French Dr., Hobbs, NM 88240  
Phone: (575) 393-6161 Fax: (575) 393-0720  
District II  
811 S. First St., Artesia, NM 88210  
Phone: (575) 748-1283 Fax: (575) 748-9720  
District III  
1000 Rio Brazos Road, Aztec, NM 87410  
Phone: (505) 334-6178 Fax: (505) 334-6170  
District IV  
1220 S. St. Francis Dr., Santa Fe, NM 87505  
Phone: (505) 476-3460 Fax: (505) 476-3462

State of New Mexico  
Energy, Minerals & Natural Resources Department  
OIL CONSERVATION DIVISION  
1220 South St. Francis Dr.  
Santa Fe, NM 87505

Form C-102  
Revised August 1, 2011  
Submit one copy to appropriate  
District Office

☐ AMENDED REPORT

## WELL LOCATION AND ACREAGE DEDICATION PLAT

<sup>1</sup> API Number 30-015-31854	<sup>2</sup> Pool Code 28509	<sup>3</sup> Pool Name Grayburg Jackson; SR-Q-G-SA
<sup>4</sup> Property Code 302521	<sup>5</sup> Property Name McIntyre A East	<sup>6</sup> Well Number 15
<sup>7</sup> OGRID No. 229137	<sup>8</sup> Operator Name COG Operating LLC	<sup>9</sup> Elevation 3623

### <sup>10</sup> Surface Location

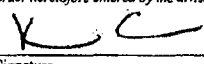
UL or lot no.	Section	Township	Range	Lot Idn	Feet from the	North/South line	Feet from the	East/West line	County
P	20	17S	30E		330	South	990	East	Eddy

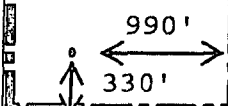
### <sup>11</sup> Bottom Hole Location If Different From Surface

UL or lot no.	Section	Township	Range	Lot Idn	Feet from the	North/South line	Feet from the	East/West line	County

<sup>12</sup> Dedicated Acres 40	<sup>13</sup> Joint or Infill	<sup>14</sup> Consolidation Code	<sup>15</sup> Order No.
-------------------------------------	-------------------------------	----------------------------------	-------------------------

No allowable will be assigned to this completion until all interests have been consolidated or a non-standard unit has been approved by the division.

<div style="border: 1px solid black; width: 100px; height: 100px; margin: 10px auto;"></div>				<b><sup>17</sup> OPERATOR CERTIFICATION</b> I hereby certify that the information contained herein is true and complete to the best of my knowledge and belief, and that this organization either owns a working interest or unleased mineral interest in the land including the proposed bottom hole location or has a right to drill this well at this location pursuant to a contract with an owner of such a mineral or working interest, or to a voluntary pooling agreement or a compulsory pooling order heretofore entered by the division.	
				 Signature	1/29/15 Date
				Kanicia Castillo Printed Name	
				kcstillo@concho.com E-mail Address	
<div style="border: 1px solid black; width: 100px; height: 100px; margin: 10px auto;"></div>				<b><sup>18</sup> SURVEYOR CERTIFICATION</b> I hereby certify that the well location shown on this plat was plotted from field notes of actual surveys made by me or under my supervision, and that the same is true and correct to the best of my belief.	
				Date of Survey	
				Signature and Seal of Professional Surveyor:	
				Certificate Number	



# NM OIL CONSERVATION

ARTESIA DISTRICT

JUL 21 2015

District I  
1625 N. French Dr., Hobbs, NM 88240  
Phone: (505) 393-6161 Fax: (505) 393-0720  
District II  
811 S. First St., Artesia, NM 88210  
Phone: (505) 748-1283 Fax: (505) 748-9720  
District III  
1000 Rio Brazos Road, Aztec, NM 87410  
Phone: (505) 334-6178 Fax: (505) 334-6170  
District IV  
1220 S. St. Francis Dr., Santa Fe, NM 87505  
Phone: (505) 476-3460 Fax: (505) 476-3462

State of New Mexico  
Energy, Minerals & Natural Resources Department  
OIL CONSERVATION DIVISION  
1220 South St. Francis Dr.  
Santa Fe, NM 87505

RECEIVED

Form C-102

Revised August 1, 2011

Submit one copy to appropriate

District Office

☐ AMENDED REPORT

## WELL LOCATION AND ACREAGE DEDICATION PLAT

<sup>1</sup> API Number 30-015-31854	<sup>2</sup> Pool Code 96718	<sup>3</sup> Pool Name Loco Hills;Glorieta-Yeso
<sup>4</sup> Property Code 302521	<sup>5</sup> Property Name McIntyre A East	<sup>6</sup> Well Number 15
<sup>7</sup> OGRID No. 229137	<sup>8</sup> Operator Name COG Operating LLC	<sup>9</sup> Elevation 3623

### <sup>10</sup> Surface Location

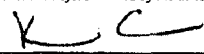
UL or lot no.	Section	Township	Range	Lot Idn	Feet from the	North/South line	Feet from the	East/West line	County
P	20	17S	30E		330	South	990	East	Eddy

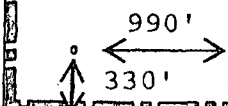
### <sup>11</sup> Bottom Hole Location If Different From Surface

UL or lot no.	Section	Township	Range	Lot Idn	Feet from the	North/South line	Feet from the	East/West line	County

<sup>12</sup> Dedicated Acres 40	<sup>13</sup> Joint or Infill	<sup>14</sup> Consolidation Code	<sup>15</sup> Order No.
-------------------------------------	-------------------------------	----------------------------------	-------------------------

No allowable will be assigned to this completion until all interests have been consolidated or a non-standard unit has been approved by the division.

<div style="border: 1px solid black; width: 100px; height: 100px; margin: 10px auto;"></div>				<b><sup>17</sup> OPERATOR CERTIFICATION</b> <i>I hereby certify that the information contained herein is true and complete to the best of my knowledge and belief, and that this organization either owns a working interest or unleased mineral interest in the land including the proposed bottom hole location or has a right to drill this well at this location pursuant to a contract with an owner of such a mineral or working interest, or to a voluntary pooling agreement or a compulsory pooling order heretofore entered by the division.</i>	
				 Signature	1/29/15 Date
				Kanicia Castillo Printed Name	
				kcastillo@concho.com E-mail Address	
<div style="border: 1px solid black; width: 100px; height: 100px; margin: 10px auto;"></div>				<b><sup>18</sup> SURVEYOR CERTIFICATION</b> <i>I hereby certify that the well location shown on this plat was plotted from field notes of actual surveys made by me or under my supervision, and that the same is true and correct to the best of my belief.</i>	
				Date of Survey	
				Signature and Seal of Professional Surveyor:	
				Certificate Number	



JUL 21 2015

RECEIVED

Mcintyre A East 15  
30-015-31854  
COG Operating, LLC.  
January 29, 2015  
Conditions of Approval

Notify BLM at 575-361-2822 a minimum of 24 hours prior to commencing work.

Work to be completed by April 29, 2015.

1. Operator shall set a CIBP at 4,551' and place 40' Class C cement on top. Tag required.

**Note:** At a later date, the Glorieta formation and the DV tool must be abandoned properly.

2. Must conduct a casing integrity test before perforating and fracturing. Submit results to BLM. The CIT is to be performed on the production casing to max treating pressure. Notify BLM if test fails.
3. Submit formation tops on a subsequent report as they are not in the file.
4. Before casing or a liner is added or replaced, prior BLM approval of the design is required. Use notice of intent Form 3160-5.
5. Surface disturbance beyond the originally approved pad must have prior approval.
6. Closed loop system required.
7. All waste (i.e. drilling fluids, trash, salts, chemicals, sewage, gray water, etc.) created as a result of work over operations shall be safely contained and disposed of properly at a waste disposal facility. No waste material or fluid shall be disposed of on the well location or surrounding area. Porto-johns and trash containers will be on-location during fracturing operations or any other crew-intensive operations.
8. Operator to have H2S monitoring equipment on location.
9. A minimum of a **2000 (2M)** BOP to be used. All blowout preventer (BOP) and related equipment (BOPE) shall comply with reasonable well control requirements. A two ram system with a blind ram and a pipe ram designed for the size of the work string shall be adequate. Tapered work strings will require an additional pipe ram. The manifold shall comply with Onshore Oil and Gas Order #2 Attachment I (2M Diagrams of Choke Manifold Equipment). The accumulator system shall have an immediately available power source to close the rams and retain 200 psi above pre-charge. The pre-charge test shall follow requirements in Onshore Order #2.



10. Subsequent sundry required detailing work done and completion report for the new formations. Operator to include well bore schematic of current well condition when work is complete.

11. See attached for general requirements.

JAM 012915

BUREAU OF LAND MANAGEMENT  
Carlsbad Field Office  
620 East Greene Street  
Carlsbad, New Mexico 88220  
575-234-5972

NM OIL CONSERVATION  
ARTESIA DISTRICT

JUL 21 2015

RECEIVED

**General Requirements for Plug Backs**

Failure to comply with the following Conditions of Approval may result in a Notice of Incidents of Noncompliance (INC) in accordance with 43 CFR 3163.1.

1. Plugging operations shall commence within ninety (90) days from this approval.

**If you are unable to plug back the well by the 90<sup>th</sup> day provide this office, prior to the 90<sup>th</sup> day, with the reason for not meeting the deadline and a date when we can expect the well to be plugged back. Failure to do so will result in enforcement action.**

2. **Notification:** Contact the appropriate BLM office at least 24 hours prior to the commencing of any plug back operations. For wells in Eddy County, call 575-361-2822.
3. **Blowout Preventers:** A blowout preventer (BOP), as appropriate, shall be installed before commencing any plugging operation. The BOP must be installed and maintained as per API and manufacturer recommendations. The minimum BOP requirement is a 2M system for a well not deeper than 9,090 feet; a 3M system for a well not deeper than 13,636 feet; and a 5M system for a well not deeper than 22,727 feet.
4. **Mud Requirement:** Mud shall be placed between all plugs. Minimum consistency of plugging mud shall be obtained by mixing at the rate of 25 sacks (50 pounds each) of gel per 100 barrels of brine water. Minimum nine (9) pounds per gallon.
5. **Cement Requirement:** Sufficient cement shall be used to bring any required plug to the specified depth and length. Any given cement volumes on the proposed plugging procedure are merely estimates and are not final. Unless specific approval is received, no plug except the surface plug shall be less than 25 sacks of cement. Any plug that requires a tag will have a minimum WOC time of 4 hours.  
  
In lieu of a cement plug across perforations in a cased hole (not for any other plugs), a bridge plug set within 50 feet to 100 feet above the perforations shall be capped with 25 sacks of cement. **Before pumping cement on top of CIBP, tag will be required to verify depth. Based on depth, a tag of the cement may be deemed necessary.**  
  
Unless otherwise specified in the approved procedure, the cement plug shall consist of either Neat Class "C", for up to 7,500 feet of depth or Neat Class "H", for deeper than 7,500 feet plugs.
6. **Subsequent Plug back Reporting:** Within 30 days after plug back work is completed, file one original and three copies of the Subsequent Report, Form 3160-5 to BLM. The report should give in detail the manner in which the plug back work was carried out, the extent (by depths) of cement plugs placed, and the size and location (by depths) of casing left in the well. **Show date work was completed.**
7. **Trash:** All trash, junk and other waste material shall be contained in trash cages or bins to prevent scattering and will be removed and deposited in an approved sanitary landfill. Burial on site is not permitted.