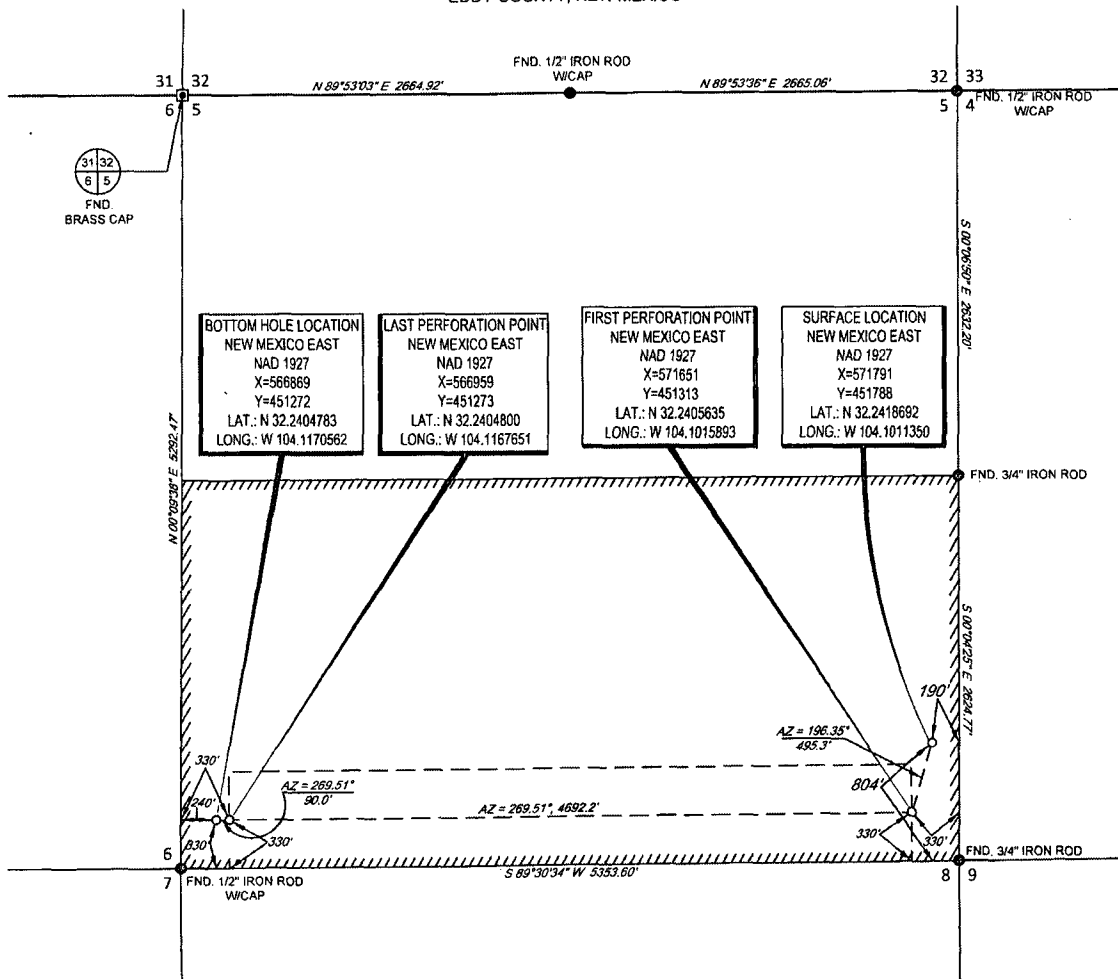


30-015-43389



SECTION 5, TOWNSHIP 24-S, RANGE 28-E, N.M.P.M.
EDDY COUNTY, NEW MEXICO



LEASE NAME & WELL NO.: EDDIE SCOTT 05-24S-28E RB #208H

SECTION 5 TWP 24-S RGE 28-E SURVEY N.M.P.M.
COUNTY EDDY STATE NM
DESCRIPTION 804' FSL & 190' FEL

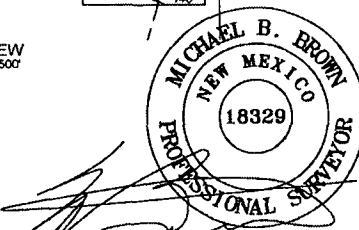
DISTANCE & DIRECTION

FROM INT. OF US-285 S. & NM-387. GO SOUTH ON US-285 S ±1.0
MILES. THENCE SOUTHWEST (RIGHT) ON HIGBY HOLE RD. ±2.1
MILES TO A POINT ±200 FEET EAST OF THE LOCATION.

ALL BEARINGS, DISTANCES, AND COORDINATE VALUES CONTAINED HEREON ARE GRID
BASED UPON THE NEW MEXICO STATE PLANE COORDINATE SYSTEM, EAST ZONE OF THE
NORTH AMERICAN DATUM 1927, U.S. SURVEY FEET

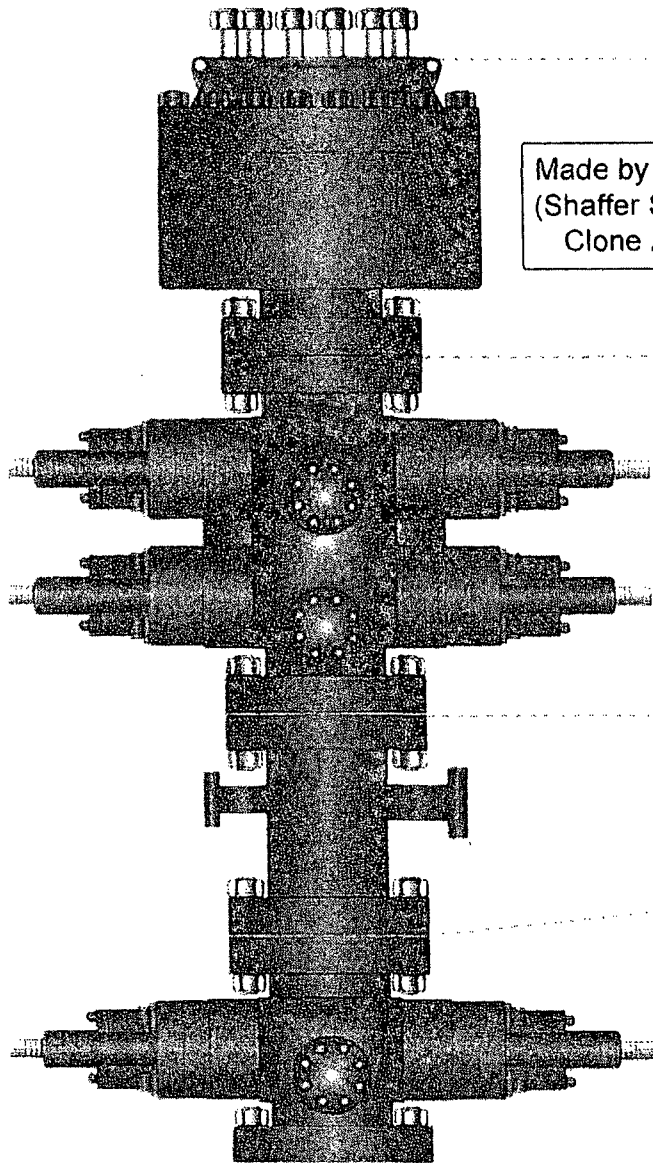
THIS EASEMENT/SERVITUDE LOCATION SHOWN HEREON HAS BEEN SURVEYED ON THE GROUND
UNDER MY SUPERVISION AND PREPARED ACCORDING TO THE EVIDENCE FOUND AT THE TIME OF
SURVEY, AND DATA PROVIDED BY MATADOR PRODUCTION COMPANY. THIS CERTIFICATION IS MADE
AND LIMITED TO THOSE PERSONS OR ENTITIES SHOWN ON THE FACE OF THIS PLAT AND IS
NON-TRANSFERABLE. THIS SURVEY IS CERTIFIED FOR THIS TRANSACTION ONLY.

DETAIL VIEW
SCALE: 1" = 500'



Michael Blake Brown, P.S. No. 18329
SEPTEMBER 23, 2015

TOPOGRAPHIC
LOYALTY INNOVATION LEGACY
1400 EVERMAN PARKWAY, Ste. 197 - FT. WORTH, TEXAS 76140
TELEPHONE: (817) 744-7512 - FAX (817) 744-7548
2803 NORTH BIG SPRING - MIDLAND, TEXAS 79705
TELEPHONE: (432) 682-1653 OR (800) 767-1653 - FAX (432) 682-1743
WWW.TOPOGRAPHIC.COM



Made by Cameron
(Shaffer Spherical)
Clone Annular

PATTERSON-UTI # PS2-628

STYLE: New Shaffer Spheric

BORE 13 5/8" PRESSURE 5,000

HEIGHT: 48 1/2" WEIGHT: 13,800

PATTERSON-UTI # PC2-128

STYLE: New Cameron Type

BORE 13 5/8" PRESSURE 10,000

RAMS: TOP 5" Pipe BTM Blind

HEIGHT: 66 5/8" WEIGHT: 24,000

Length 40" Outlets 4" 10M

DSA 4" 10M x 2" 10M

PATTERSON-UTI # PC2-228

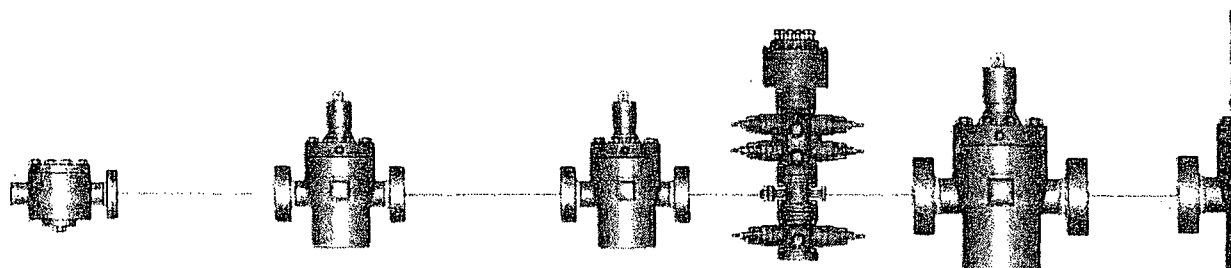
STYLE: New Cameron Type

BORE 13 5/8" PRESSURE 10,000

RAMS: 5" Pipe

HEIGHT: 41 5/8" WEIGHT: 13,000

WING VALVES



Check Valve

2" Manual Valve

2" Manual Valve

4" Manual Valve

4" Hy