

DISTRICT I
1625 N. French Dr., Hobbs, NM 88240
Phone: (575) 393-6161 Fax: (575) 393-0720

DISTRICT II
811 S. First St., Artesia, NM 88210
Phone: (575) 748-1283 Fax: (575) 748-9720

DISTRICT III
1000 Rio Brazos Rd., Aztec, NM 87410
Phone: (505) 334-6178 Fax: (505) 334-6170

DISTRICT IV
1220 S. St. Francis Dr., Santa Fe, NM 87505
Phone: (505) 476-3460 Fax: (505) 476-3462

State of New Mexico **SEP 21 2015**
Energy, Minerals & Natural Resources Department
OIL CONSERVATION DIVISION **RECEIVED**
1220 South St. Francis Dr.
Santa Fe, New Mexico 87505

Form C-102
Revised August 1, 2011
Submit one copy to appropriate District Office
☐ AMENDED REPORT

WELL LOCATION AND ACREAGE DEDICATION PLAT AS DRILLED PLAT

API Number 30-015-42270	Pool Code 13354	Pool Name UNDESIGNATED BONE SPRING
Property Code 40484	Property Name EAST PECOS FEDERAL 22	Well Number 5H
OGRID No. 246289	Operator Name RKI EXPLORATION & PRODUCTION	Elevation 2881'

Surface Location

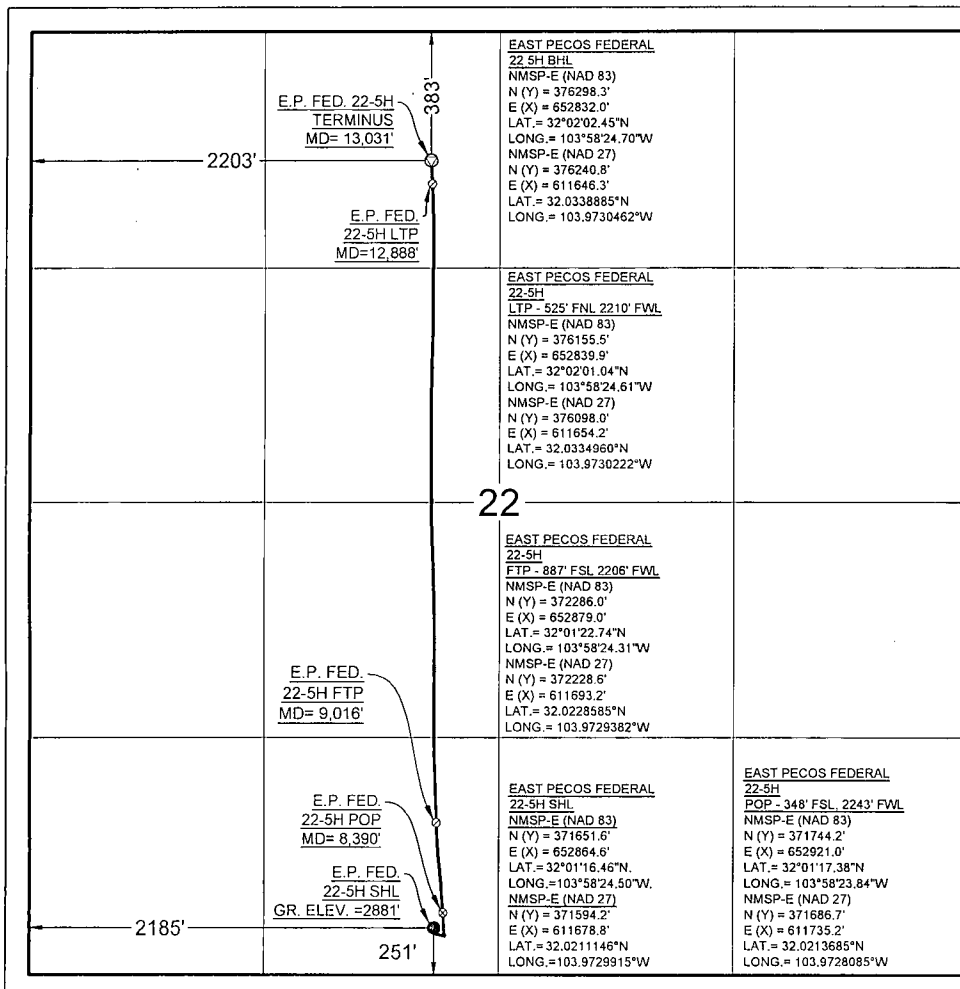
UL or lot no.	Section	Township	Range	Lot Idn	Feet from the	North/South line	Feet from the	East/West line	County
N	22	26S	29E		251	S	2185	W	EDDY

Bottom Hole Location If Different From Surface

UL or lot no.	Section	Township	Range	Lot Idn	Feet from the	North/South line	Feet from the	East/West line	County
C	22	26S	29E		383	N	2203	W	EDDY

Dedicated Acres	Joint or Infill	Consolidated Code	Order No.

No allowable will be assigned to this completion until all interests have been consolidated or a non-standard unit has been approved by the division.



OPERATOR CERTIFICATION

I hereby certify that the information contained herein is true and complete to the best of my knowledge and belief, and that this organization either owns a working interest or unleased mineral interest in the land including the proposed bottom hole location or has a right to drill this well at this location pursuant to a contract with an owner of such a mineral or working interest, or to voluntary pooling agreement or a compulsory pooling order heretofore entered by the division.

Heather Brehm 9/15/2015
Signature Date
Heather Brehm
Print Name
hbrehm@rkixp.com
E-mail Address

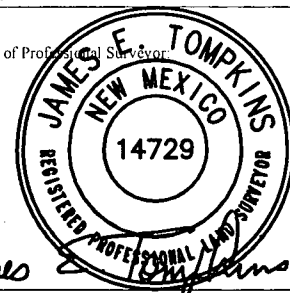
SURVEYORS CERTIFICATION

I hereby certify that the well location shown on this plat was plotted from field notes of actual surveys made by me or under my supervision, and that the same is true and correct to the best of my belief.

AUGUST 03, 2015

Date of Survey

Signature and Seal of Professional Surveyor



Job No.: WTC50811

JAMES E. TOMPKINS 14729

Certificate Number