

District I
1625 N. French Dr., Hobbs, NM 88240
District II
1301 W. Grand Avenue, Artesia, NM 88210
District III
1000 Rio Brazos Road, Aztec, NM 87410
District IV
1220 S. St. Francis Dr., Santa Fe, NM 87505

State of New Mexico
Energy Minerals and Natural Resources

Oil Conservation Division
1220 South St. Francis Dr.
Santa Fe, NM 87505

RECEIVED

NOV 10 2005

OCU-ARTESIA

Form C-101
Revised March 17, 1999

Submit to appropriate District Office
State Lease - 6 Copies
Fee Lease - 5 Copies

☐ AMENDED REPORT

APPLICATION FOR PERMIT TO DRILL, RE-ENTER, DEEPEN, PLUGBACK, OR ADD A ZONE

| | | |
|---|---|--|
| ¹ Operator Name and Address Mewbourne Oil Company PO Box 5270 Hobbs, NM 88240 | | ² OGRID 14744 ³ API Number 30 - 015-34185 |
| ³ Property Code 34918 | ⁵ Property Name Southwest Empire 8 St Com | ⁶ Well No. #1 |

| ⁷ Surface Location | | | | | | | | | |
|-------------------------------|---------|----------|-------|---------|---------------|------------------|---------------|----------------|--------|
| UL or lot no. | Section | Township | Range | Lot Idn | Feet from the | North/South line | Feet from the | East/West line | County |
| H | 8 | 18S | 28E | | 1650 | North | 810 | East | Eddy |

| ⁸ Proposed Bottom Hole Location If Different From Surface | | | | | | | | | |
|--|---------|----------|-------|---------|-------------------------------|------------------|---------------|----------------|--------|
| UL or lot no. | Section | Township | Range | Lot Idn | Feet from the | North/South line | Feet from the | East/West line | County |
| ⁹ Proposed Pool 1 Millman Undes Strawn | | | | | ¹⁰ Proposed Pool 2 | | | | |

| | | | | |
|---|---|-----------------------------------|------------------------------------|---|
| ¹¹ Work Type Code Different Reservoir | ¹² Well Type Code G | ¹³ Cable/Rotary | ¹⁴ Lease Type Code S | ¹⁵ Ground Level Elevation 3638' |
| ¹⁶ Multiple no | ¹⁷ Proposed Depth PBDT @ 10550' | ¹⁸ Formation Strawn | ¹⁹ Contractor | ²⁰ Spud Date N/A |

| ²¹ Proposed Casing and Cement Program | | | | | |
|--|-------------|--------------------|---------------|-----------------|---------------|
| Hole Size | Casing Size | Casing weight/foot | Setting Depth | Sacks of Cement | Estimated TOC |
| | | | | | |
| | | | | | |
| | | | | | |

Describe the proposed program. If this application is to DEEPEN or PLUG BACK, give the data on the present productive zone and proposed new productive zone. Describe the blowout prevention program, if any. Use additional sheets if necessary

Mewbourne Oil Company has completed the above captioned well in the Morrow @ 9986' - 10394'. MOC would like to temporarily isolate the Morrow, Perforate and test Strawn @ 9554' to 9562'. If production warrants, MOC will file for DHC.

A 7 1/16" - 3000 BOP will be installed on wellhead during all operations. MOC has researched the area for possible H2S problems. No problems were found.

| | | | |
|--|---------------------|---|------------------------------|
| ²³ I hereby certify that the information given above is true and complete to the best of my knowledge and belief. Signature: <i>Kristi Green</i> | | OIL CONSERVATION DIVISION Approved by: <i>Jim W. Green</i> Title: <i>District II Supervisor</i> | |
| Printed name: Kristi Green | | Approval Date: NOV 12 2005 | Expiration Date: NOV 12 2006 |
| Title: Hobbs Regulatory | | Conditions of Approval: | |
| Date: 11/08/05 | Phone: 505-393-5905 | Attached <input type="checkbox"/> | |

DISTRICT I
1625 N. French Dr., Hobbs, NM 88240

DISTRICT II
811 South First, Artesia, NM 88210

DISTRICT III
1000 Rio Brazos Rd., Aztec, NM 87410

DISTRICT IV
2040 South Pacheco, Santa Fe, NM 87505

State of New Mexico
Energy, Minerals and Natural Resources Department

Form C-102
Revised March 17, 1999

Submit to Appropriate District Office
State Lease - 4 Copies
Fee Lease - 3 Copies

OIL CONSERVATION DIVISION

2040 South Pacheco
Santa Fe, New Mexico 87504-2088

☐ AMENDED REPORT

WELL LOCATION AND ACREAGE DEDICATION PLAT

| | | |
|----------------------------|---|---------------------------|
| API Number 30-015-34185 | Pool Code 81380 | Pool Name Undes Strawn |
| Property Code 34918 | Property Name SOUTHWEST EMPIRE "8" STATE COM | Well Number 1 |
| OGRID No. 14744 | Operator Name MEWBOURNE OIL COMPANY | Elevation 3638' |

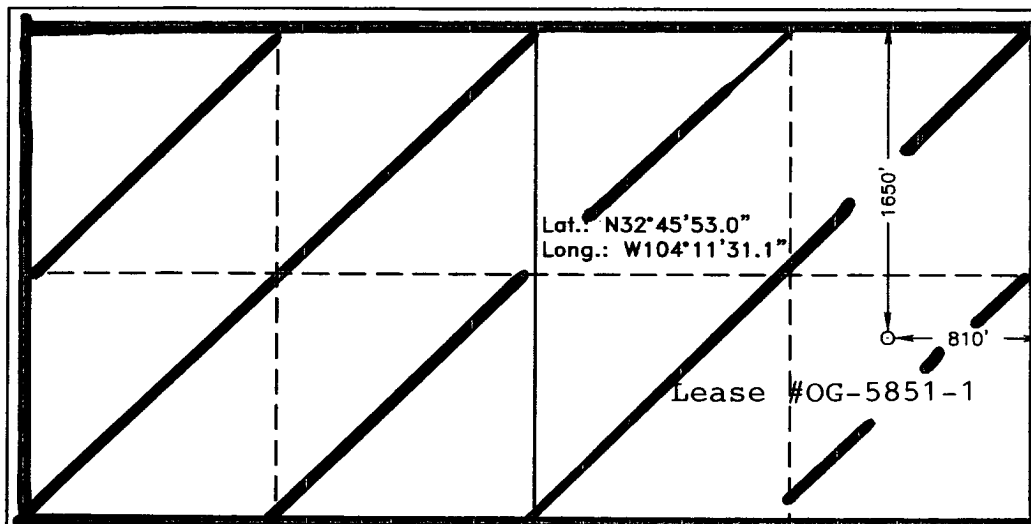
Surface Location

| | | | | | | | | | |
|--------------------|--------------|------------------|---------------|---------|-----------------------|---------------------------|----------------------|------------------------|----------------|
| UL or lot No. H | Section 8 | Township 18 S | Range 28 E | Lot Idn | Feet from the 1650 | North/South line NORTH | Feet from the 810 | East/West line EAST | County EDDY |
|--------------------|--------------|------------------|---------------|---------|-----------------------|---------------------------|----------------------|------------------------|----------------|

Bottom Hole Location If Different From Surface

| | | | | | | | | | |
|------------------------|-----------------|--------------------|-----------|---------|---------------|------------------|---------------|----------------|--------|
| UL or lot No. | Section | Township | Range | Lot Idn | Feet from the | North/South line | Feet from the | East/West line | County |
| | | | | | | | | | |
| Dedicated Acres 320 | Joint or Infill | Consolidation Code | Order No. | | | | | | |

NO ALLOWABLE WILL BE ASSIGNED TO THIS COMPLETION UNTIL ALL INTERESTS HAVE BEEN CONSOLIDATED
OR A NON-STANDARD UNIT HAS BEEN APPROVED BY THE DIVISION



OPERATOR CERTIFICATION

I hereby certify the the information
contained herein is true and complete to the
best of my knowledge and belief.

Kristi Green
Signature

Kristi Green

Printed Name

Hobbs Regulatory

Title
11/01/05

Date

SURVEYOR CERTIFICATION

I hereby certify that the well location shown
on this plat was plotted from field notes of
actual surveys made by me or under my
supervision, and that the same is true and
correct to the best of my belief.

MAY 5 2005

Date Surveyed
Signature & Seal of
Professional Surveyor

W.O. No. 5377
Certificate No. Gary L. Jones 7977
BASIN SURVEYS