

UNITED STATES
DEPARTMENT OF THE INTERIOR
BUREAU OF LAND MANAGEMENT

WELL COMPLETION OR RECOMPLETION REPORT AND LOG

FORM APPROVED
OMB NO. 1004-0137
Expires: November 30, 2000

1a. Type of Well ☒ Oil Well ☐ Gas Well ☐ Dry Other
b. Type of Completion ☒ New Well ☐ Work Over ☐ Deepen ☐ Plug Back ☐ Diff. Resvr.,
Other _____

2. Name of Operator
Bass Enterprises Production Co.

3. Address
P. O. Box 2760 Midland TX 79702

3.a Phone No. (Include area code)
(432)683-2277

4. Location of Well (Report location clearly and in accordance with Federal requirements)*

At Surface NWSE, 2130 FSL, 2180 FEL

At top prod. interval reported below SAME

At total depth SAME

RECEIVED

AUG 12 2005

OCD-WIT/ESIA

5. Lease Serial No.
NMNM02860

6. If Indian, Allottee or Tribe Name

7. Unit or CA Agreement Name and no.

NMNM71016

8. Lease Name and Well No.

POKER LAKE UNIT 218

9. API Well No.

30-015-33989

10. Field and Pool, or Exploratory

NASH DRAW - DELAWARE

11. Sec., T., R., M., on Block and

Survey or Area SEC 19, T24S, R30E

12. County or Parish

EDDY

13. State

NM

17. Elevations (DF, RKB, RT, GL)*

3171' GL

14. Date Spudded

06/05/2005

15. Date T.D. Reached

06/17/2005

16. Date Completed

☐ D & A ☒ Ready to Prod.
07/09/2005

18. Total Depth: MD 7530'
TVD

19. Plug Back T.D.: MD 7443'
TVD

20. Depth Bridge Plug Set: MD 7295'
TVD

21. Type of Electric & Other Mechanical Logs Run (Submit copy of each)
GR-CNL-LDT; GR-AIT

22. Was well cored? ☒ No ☐ Yes (Submit analysis)
Was DST run? ☒ No ☐ Yes (Submit analysis)
Directional Survey? ☐ No ☒ Yes (Submit copy)

23. Casing and Liner Record (Report all strings set in well)

Hole Size	Size/Grade	Wt. (#/ft.)	Top (MD)	Bottom (MD)	Stage Cementer Depth	No. of Sk. & Type of Cement	Slurry Vol. (BBL)	Cement Top*	Amount Pulled
14-3/4"	11-3/4"	H40/42#	0'	562'		475		0'	0
11"	5-1/2"	J55/15.5#	0'	6205'					0
7-7/8"	5-1/2"	J55/17#	6205'	7528'		620		4880"	

24. Tubing Record

Size	Depth Set (MD)	Packer Depth (MD)	Size	Depth Set (MD)	Packer Depth (MD)	Size	Depth Set (MD)	Packer Depth (MD)
2-7/8"	7250'							

25. Producing Intervals

Formation	Top	Bottom	Perforated Interval	Size	No. Holes	Perf. Status
A) DELAWARE	7206'	7374'	7206'-7218'	0.470	24	PRODUCING
B)			7362'-7374'	0.470	24	BELOW CBP
C)						
D)						

26. Perforation Record

27. Acid, Fracture, Treatment, Cement Squeeze, Etc.

Depth Interval	Amount and Type of Material
7206'-7218'	123,748 GALS PW +9,906# 14/30 LITE PROP
7362'-7374'	122,645 GALS PW +9,923# 14/30 LITE PROP

28. Production - Interval A

Date First Produced	Test Date	Hours Tested	Test Production	Oil BBL	Gas MCF	Water BBL	Oil Gravity Corr. API	Gas Gravity	Production Method
7/9/2005	7/28/05	24	→	37	42	189			PUMPING
Choke Size	Tbg. Press. Flwg. SI	Csg. Press. SI	24 Hr. Rate	Oil BBL	Gas MCF	Water BBL	Gas : Oil Ratio	Well Status	
18/64	280	180	→	37	42	189		POW	

Production - Interval B

Date First Produced	Test Date	Hours Tested	Test Production	Oil BBL	Gas MCF	Water BBL	Oil Gravity Corr. API	Gas Gravity	Production Method
			→						
Choke Size	Tbg. Press. Flwg. SI	Csg. Press. SI	24 Hr. Rate	Oil BBL	Gas MCF	Water BBL	Gas : Oil Ratio	Well Status	
			→						

(See Instructions and spaces for additional data on reverse side)

28b. Production - Interval C

Date First Produced	Test Date	Hours Tested	Test Production →	Oil BBL	Gas MCF	Water BBL	Oil Gravity Corr. API	Gas Gravity	Production Method
Choke Size	Tbg. Press. Flwg. SI	Csg. Press.	24 Hr. Rate →	Oil BBL	Gas MCF	Water BBL	Gas : Oil Ratio	Well Status	

28c. Production - Interval D

Date First Produced	Test Date	Hours Tested	Test Production →	Oil BBL	Gas MCF	Water BBL	Oil Gravity Corr. API	Gas Gravity	Production Method
Choke Size	Tbg. Press. Flwg. SI	Csg. Press.	24 Hr. Rate →	Oil BBL	Gas MCF	Water BBL	Gas : Oil Ratio	Well Status	

29. Disposition of Gas (*Sold, used for fuel, vented, etc.*)

SOLD

30. Summary of Porous Zones (Include Aquifers):

Show all important zones or porosity and contents thereof: Cored intervals and all drill-stem tests, including depth interval tested, cushion used, time tool open, flowing and shut-in pressures and recoveries.

31. Formation (Log) Markers

Formation	Top	Bottom	Descriptions, Contents, etc.	Name	Top
					Meas. Depth
				T/RUSTLER	100'
				T/SALT	600'
				B/SALT	3216'
				T/DELAWARE MTN GROUP	3428'

32. Additional remarks (include plugging procedure):

33. Circle enclosed attachments:

1. Electrical/Mechanical Logs (1 full set req'd.) 2. Geological Report 3. DST Report 4. Directional Survey
5. Sundry Notice for plugging and cement verification 6. Core Analysis 7. Other

34. I hereby certify that the foregoing and attached information is complete and correct as determined from all available records (see attached instructions)*

Name (please print) Cindi Goodman Title Production ClerkSignature  Date 08/03/2005

Title 18 U.S.C. Section 101 and Title 43 U.S.C. Section 1212, make it a crime for any person knowingly and willfully to make to any department or agency of the United States and false, fictitious or fraudulent statements or representations as to any matter within its jurisdiction.

DISTRICT I
1825 N. French Dr., Hobbs, NM 88240
DISTRICT II
811 South First, Artesia, NM 88210

DISTRICT III
1000 Rio Brazos Rd., Aztec, NM 87410

DISTRICT IV
2040 South Pacheco, Santa Fe, NM 87505

State of New Mexico
Energy, Minerals and Natural Resources Department

Form C-102
Revised March 17, 1999

Submit to Appropriate District Office
State Lease - 4 Copies
Fee Lease - 3 Copies

OIL CONSERVATION DIVISION

2040 South Pacheco
Santa Fe, New Mexico 87504-2088

☐ AMENDED REPORT

WELL LOCATION AND ACREAGE DEDICATION PLAT

API Number	Pool Code 47545	Pool Name NASH DRAW DELAWARE
Property Code 001796	Property Name POKER LAKE UNIT	Well Number 218
OGRID No. 001801	Operator Name BASS ENTERPRISES PRODUCTION COMPANY	Elevation 3172'

Surface Location

UL or lot No. J	Section 19	Township 24 S	Range 30 E	Lot Idn	Feet from the 2130	North/South line SOUTH	Feet from the 2180	East/West line EAST	County EDDY
--------------------	---------------	------------------	---------------	---------	-----------------------	---------------------------	-----------------------	------------------------	----------------

Bottom Hole Location If Different From Surface

UL or lot No.	Section	Township	Range	Lot Idn	Feet from the	North/South line	Feet from the	East/West line	County
Dedicated Acres 40	Joint or Infill I	Consolidation Code	Order No.						

NO ALLOWABLE WILL BE ASSIGNED TO THIS COMPLETION UNTIL ALL INTERESTS HAVE BEEN CONSOLIDATED
OR A NON-STANDARD UNIT HAS BEEN APPROVED BY THE DIVISION

RECEIVED AUG 12 2005 OCCUPANCY			
LOT 1 - 40.77 AC.	40.66 AC.	40.65 AC.	40.65 AC.
LOT 2 - 40.87 AC.	40.69 AC.	40.68 AC.	40.66 AC.
LOT 3 - 40.94 AC.	40.69 AC.	40.68 AC.	40.67 AC.
LOT 4 - 41.06 AC.	40.73 AC.	40.70 AC.	40.70 AC.

LAT - N32°12'05.8"
LONG - W103°55'06.9"

3158.5' 3166.3' 3173.0' 3188.7' 2180' 2130'

OPERATOR CERTIFICATION

I hereby certify the the information contained herein is true and complete to the best of my knowledge and belief.

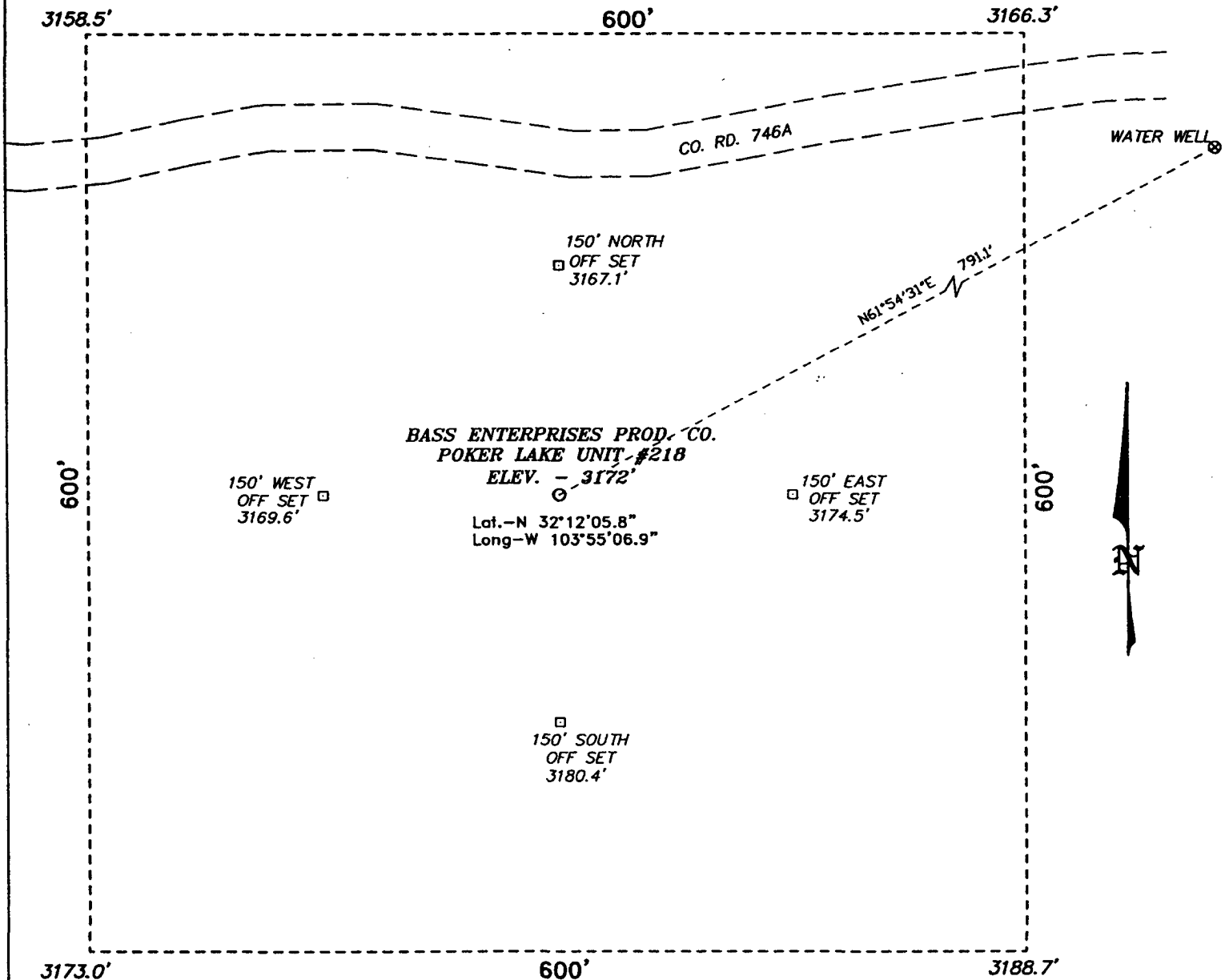
Signature
W.R. DANNELS
Printed Name
DIVISION DRILLING SUPT.
Title
Date 11/31/05

SURVEYOR CERTIFICATION

I hereby certify that the well location shown on this plat was plotted from field notes of actual surveys made by me or under my supervision and that the same is true and correct to the best of my belief.

APRIL 15 2004
Date Surveyed
Signature & Seal of Professional Surveyor
Certificate No. 7977
BASIN SURVEYS

SECTION 19, TOWNSHIP 24 SOUTH, RANGE 30 EAST, N.M.P.M.,
EDDY COUNTY, NEW MEXICO.



DIRECTIONS TO LOCATION:

FROM THE JUNCTION OF CO. RD. 746A AND CO. RD. 748, GO EASTERLY ON CO. RD. 746A FOR APPROX. 0.8 MILE TO A POINT ON THE PROPOSED WELL PAD.

BASIN SURVEYS P.O. BOX 1786 - HOBBS, NEW MEXICO

Drawn By: K. GOAD

Date: 04-23-2004 Disk: KJG CD#7 - 4145A.DWG

BASS ENTERPRISES PRODUCTION CO.

REF: POKER LAKE UNIT No. 218 / Well Pad Topo

THE POKER LAKE UNIT No. 218 LOCATED 2130' FROM
THE SOUTH LINE AND 2180' FROM THE EAST LINE OF
SECTION 19, TOWNSHIP 24 SOUTH, RANGE 30 EAST,
N.M.P.M., EDDY COUNTY, NEW MEXICO.

Survey Date: 04-15-2004	Sheet 1 of 1 Sheets
-------------------------	---------------------