

Submit 3 Copies To Appropriate District
Office
District I
1625 N. French Dr., Hobbs, NM 87240
District II
1301 W. Grand Ave., Artesia, NM 88210
District III
1000 Rio Brazos Rd., Aztec, NM 87410
District IV
1220 S. St. Francis Dr., Santa Fe, NM 87505

State of New Mexico
Energy, Minerals and Natural Resources

Form C-103
May 27, 2004

OIL CONSERVATION DIVISION
1220 South St. Francis Dr.
Santa Fe, NM 87505

WELL API NO. 30-015-30869
5. Indicate Type of Lease STATE <input type="checkbox"/> FEE <input type="checkbox"/>
6. State Oil & Gas Lease No.

SUNDRY NOTICES AND REPORTS ON WELLS
(DO NOT USE THIS FORM FOR PROPOSALS TO DRILL OR TO DEEPEN OR PLUG BACK TO A DIFFERENT RESERVOIR. USE "APPLICATION FOR PERMIT" (FORM C-101) FOR SUCH PROPOSALS.)

1. Type of Well:
Oil Well ☒ Gas Well ☐ Other ☐

2. Name of Operator
Nearburg Producing Company

3. Address of Operator
3300 N A St., Bldg 2, Ste 120, Midland, TX 79705

4. Well Location
Unit Letter A : 510 feet from the North line and 990 feet from the East line
Section 27 Township 19S Range 25E NMPM County Eddy

11. Elevation (Show whether DR, RKB, RT, GR, etc.)

Pit or Below-grade Tank Application ☐ or Closure ☐
Pit type _____ Depth to Groundwater _____ Distance from nearest fresh water well _____ Distance from nearest surface water _____
Pit Liner Thickness: _____ mil Below-Grade Tank: Volume _____ bbls; Construction Material _____

12. Check Appropriate Box to Indicate Nature of Notice, Report, or Other Data

NOTICE OF INTENTION TO:

PERFORM REMEDIAL WORK ☐ PLUG AND ABANDON ☐
TEMPORARILY ABANDON ☐ CHANGE PLANS ☐
PULL OR ALTER CASING ☐ MULTIPLE COMPLETION ☐

OTHER: ☐

SUBSEQUENT REPORT OF:

REMEDIAL WORK ☐ ALTERING CASING ☐
COMMENCE DRILLING OPNS. ☐ PLUG AND ABANDONMENT ☐
CASING TEST AND CEMENT JOB ☐

OTHER: Well TA'd ☒

13. Describe proposed or completed operations. (Clearly state all pertinent details, and give pertinent dates, including estimated date of starting any proposed work). SEE RULE 1103. For Multiple Completions: Attach wellbore diagram of proposed completion or recompletion.

NPC TA'd the subject well on 12/12/05 w/ Gerry Guye witnessing test. Please see attached breakdown of TA and chart is attached

Temporary Abandoned Status approved
until 12-12-07

I hereby certify that the information above is true and complete to the best of my knowledge and belief. I further certify that any pit or below-grade tank has been/will be constructed or closed according to NMOCD guidelines ☒ , a general permit ☐ or an (attached) alternative OCD-approved plan ☐

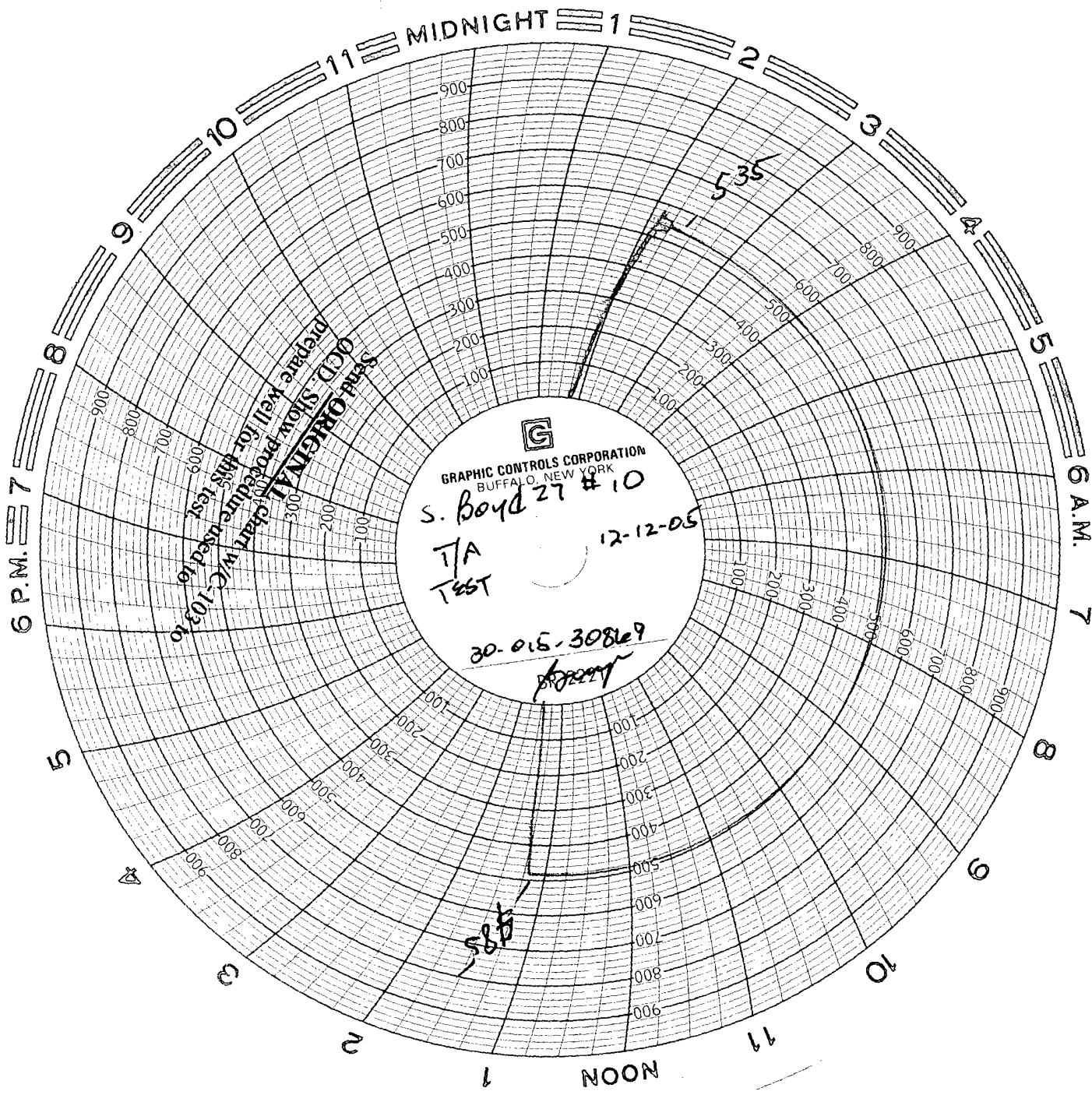
SIGNATURE Sarah Jordan TITLE Production Analyst DATE 1/4/06

Type or print name Sarah Jordan E-mail address: sjordan@nearburg.com
Telephone No. 432/686-8235

For State Use Only

APPROVED BY [Signature] TITLE _____ DATE 1-9-06

Conditions of Approval, if any:



GRAPHIC CONTROLS CORPORATION
BUFFALO, NEW YORK

S. Boyd 27 #10

T/A
TEST

12-12-05

30-015-30869

[Handwritten signature]

Send ORIGINAL chart w/c 103 to
OCD. Show procedure used to
prepare well for this test.

TIGHT HOLE-PLEASE DO NOT RELEASE ANY INFORMATION ON THIS WELL

South Boyd 27 #10

510' FNL and 990' FEL, Section 27, T19S, R25E

Cisco/Canyon

Eddy County, New Mexico

**** ALL COSTS ARE FIELD ESTIMATES ****

- 11/22/05 MIRU Mesa Well Service pulling unit. Had backhoe dig out cellar to expose 9 5/8" wellhead flange nuts. Also had backhoe back drag weeds on location. Blow dn csg pressure. ND WH & NU 10" BOP on 9 5/8" flange (G&L). Had Key fisherman on location w/ csg spear & 6.220" grapple to catch 7" 23# csg. RU Allen's csg tongs, slips & backups. RIH w/ spear & caught 7" csg @ surface. POOH w/ 1 jt- 7" N-80 23# BT&C csg. Found the 7" collar split vertically on one side w/ 3/8" gap in opening. LD jt & remove spear from jt. Wait for x-over sub for 2 3/8" tbg to RIH w/spear & fish 7" csg again. Catch fish & POOH w/ 4 jts- 7" N-80 23# csg. The fifth jts pin pulled out of collar with both sides of pin having a split in them. Could not break the jt between the 4th & fifth jt. Left hanging in derrick. Will break out & LD jts in the AM before RIH w/ new jts & trying to screw back into collar. Close BOP blinds. SDFN. Perfs @ 7748'- 7818'. PBTD @ 8090'.
Current Operation This AM: RIH w/ new csg.
- 11/23/05 Had welder cut 8' sections of the stand of 7" csg held in derrick & LD until we got to collar of next jt. LD that jt of 7" csg. Have a total of 5 jts- 7" N-80csg on ground. Had Double R deliver 5 jts- 7" N-80 23# LT&C 8rd csg to location (our pipe from their yard). Tallied the bad 4 jts- 7" csg that was POH. Had Double R haul those 4 jts- 7" N-80 23# BT&C (buttress thread) back to their yard for inspection. The other jt was left on location (cut into pieces). Decided not to RIH & try to screw into collar. Believe collar is in bad shape. Had Double R deliver 5 more jts- 7" N-80 23# LT&C 8rd csg to location & off load on pipe racks. Had csg crew standby until deciding what to do. Will RIH w/ spear & grapple under 3 1/2" drill pipe, free point, string shoot & back off 2 collars below top of fish. Then try to screw back into good collar w/ good pipe. Hook up csg to frac tank & let well vent through Thanksgiving holiday & weekend. Close BOP blinds. SDFW. Perfs @ 7748'- 7818'. PBTD @ 8090'.
Current Operation This AM: RIH w/ new csg.
- 11/28/05 MIRU Rotary Wireline to RIH w/ GR/JG/CCL to top of fish @ 190' +/- . Could not get into 7" 23# csg (top of fish) w/ gauge ring. POOH w/ GR/JB/CCL. RDMO Rotary WL truck. PU & RIH w/ 7.5" lead impression block, x-over sub, 2 jts- 2 3/8" L-80 tbg under sand line & tag top of fish to get an impression of top of fish. POOH w/ impression block. Didn't make real good impression on first attempt. Identified marks made. RIH again to make a better impression. Made a good impression the second time. Found the pin on next jt is split & curled inside itself. Decided to RIH w/ 6 1/8" btm hole long tapered mill to dress off inside wall of csg. Wait for pump, pit, swivel, drill collars, x-over subs & mill to get to location. Had Key pump truck haul 3 loads of fresh wtr/soap & put in frac tank. Had Two-State deliver another 500 Bbl frac tank & set. Two-State also delivered 238 jts- 2 3/8" L-80 4.7#EUE 8rd tbg & set on pipe racks. PU & RIH w/ 6 1/8" long tapered mill, x-over sub, (4) 4 3/4" drill collars, 3 jts- 2 3/8" L-80 4.7# EUE 8rd tbg. PU swivel on third jt of tbg. The tapered mill went into csg w/ no trouble. Pulled back up to top of fish & turned to make sure top of fish was clear. POOH w/ 1 jt- 2 3/8" L-80 4.7# EUE 8rd tbg. Tie tbg into frac tank and leave venting. SDFN. Will POOH w/ DC's in the AM before RIH w/ CIBP.
Current Operation This AM: RIH w/ CIBP.
- 11/29/05 POOH & LD 2 jts- 2 3/8" L-80 4.7# EUE 8rd tbg on pipe racks. Stand back (4) 4 3/4" drill collars, x-over sub, 6 1/8" long tapered mill. RU Rotary wireline electric line truck to RIH w/ GR/JB/CCL. Was able to get through top of fish w/ gauge ring. Went dn to 7720' w/ GR. FL approx 5000'. POOH w/ gauge ring. RIH w/ 5.61" CIBP to set in 7" csg. Went into top of fish O.K. Set CIBP @ 7690'. POOH & standby. RU Allen's csg crew. PU & RIH w/ 7" csg spear w/ grapple, x-over sub, 7 jts- 3 1/2" drill pipe (Weatherford rented). Speared 7" csg. PU & found csg parted again approx 1800'+ below (according to weight gained). POOH & LD 7 jts- 3 1/2" IF drill pipe, x-over sub, 7" csg spear & grapple w/ 1 jt- 7" 23# csg. Put 7" x 2" swedge

TIGHT HOLE-PLEASE DO NOT RELEASE ANY INFORMATION ON THIS WELL

South Boyd 27 #10

510' FNL and 990' FEL, Section 27, T19S, R25E

Cisco/Canyon

Eddy County, New Mexico

**** ALL COSTS ARE FIELD ESTIMATES ****

in top of 7" csg collar & close BOP rams. Left well venting to frac tank overnight. SDFN.
Current Operation This AM: POH and LD csg.

11/30/05 POOH & LD 38 jts- 7" 23# 8rd tbg on pipe racks. The last jt pulled out had a split collar on it. The threads were not hurt inside the collar. Decided to get more 7" csg & try to RIH w/ new collar & screw back into pin looking up at us. Had to cull 21 jts- 7" csg that had the threads galled either on pin or inside collar. Had 18 jts- 7" csg that we could RIH w/ new jts. Had Double R deliver 11 jts- 7" 23# N-80 csg to location. Had forklift move 2 3/8" tbg off racks in the morning so we could have room to LD 7" csg. Had another forklift out in the afternoon to cull through 7" csg, move, unload & rack new 7" csg. Have 18 jts- 7" 23# J-55 csg & 21 jts- 7" 23# N-80 csg on racks to RIH in the AM. Double R will bring 10 more jts 7" csg to location in the AM. Close BOP blinds. Left well open to frac tank to vent. SDFN. Will RIH w/ 7" csg in the AM.

Current Operation This AM: RIH w/ csg.

12/01/05 RU Allen's csg crew. Open BOP blinds. PU & RIH w/ 1 jt- 7" N-80 23# csg w/ 7" collar on btm, 18 jts- 7" J-55 23# csg (original tbg), 20 jts- 7" N-8023# csg (inventory). Tagged pin w/ collar. Slowly turned csg to the right & screwed collar onto pin to catch fish. Torqued up w/ csg crews tongs. Pulled to 85,000# & then back to neutral weight. Torqued w/ tongs & got all torque back. Pulled to 100,000# & then back to neutral weight. Torqued again & got all torque back. ND BOP. Pulled csg to 80,000# to set slips in 9 5/8" head. Had welder make cutoff. Set B-section on wellhead & flange up. RIH & LD(4) 4 3/4" drill collars & 6 1/8" long tapered mill. NU BOP on top of B-section. Close BOP blinds. Had forklift put 2 3/8" L-80 tbg back on pipe racks. Left well SI. SDFN. Will have JSI dump bail 35' cmt on CIBP in the AM before RIH w/ 2 3/8" tbg to circulate pkr fluid & POOH.

Current Operation This AM: Dump cmt on CIBP.

12/02/05 RU JSI electric line truck to dump bail 35' cmt on top of CIBP set @ 7690'. Open BOP blinds. Made 2 bailer runs to get 35' cmt dumped. RDMO JSI truck. Tallied 2 3/8" tbg on pipe racks. PU & RIH w/ 242 jts- 2 3/8" L-80 4.7# EUE 8rd tbg (open ended) off racks. EOT @ 7645'. RU Key reverse unit to pump 300 Bbls 2% KCL wtr w/ double inhibited pkr fluid dn csg & out tbg to circulate good fluid. Pumped 20 Bbls fluid before catching circulation. Tried to pressure up on csg completing circulation & found csg would not hold pressure. The 9 5/8" surface csg had pressure on it. Blew dark colored oil to frac tank for awhile then turned to pkr fluid. Decided the 7" csg must be parted deeper downhole. Left 9 5/8" open to frac tank over the weekend. Close BOP rams. Put TIW valve in tbg. SDFW. Will POOH w/ 2 3/8" tbg standing back Monday AM before starting to POOH w/ csg.

Current Operation This AM: POH w/ tbg.

12/05/05 Bled dn tbg pressure to frac tank. Open BOP rams. POOH standing back 242 jts- 2 3/8" L-80 4.7# EUE 8rd tbg. ND BOP & B-section wellhead. PU & RIH w/ 7" csg spear w/ 2 7/8" IF x 6' tbg sub to spear top jt of csg. Had pulling unit PU 184,000# to see if csg was parted again. Csg was not parted. Set slips back in 9 5/8" head w/ 80,000# total on slips. NU B-section. NU BOP. RIH w/ 27 jts- 2 3/8" L-80 4.7# EUE 8rd tbg. POOH & LD 27 jts- 2 3/8" L-80 EUE 8rd tbg on pipe racks. PU & RIH w/ 7" x 2 3/8" Model R 10k pkr, 214 jts- 2 3/8" L-80 4.7# EUE 8rd tbg. Set pkr @ 6809'in 20,000# compression. Tied tbg & csg into frac tank. Close BOP rams. SDFN. Will isolate csg leak w/ pkr in the AM.

Current Operation This AM: Load and test csg above pkr to find leak.

12/06/05 RU Key reverse pump to tbg & pump 2% KCL wtr to pressure csg below pkr set @ 6809'. Would not hold pressure beneath pkr. Loaded csg back side / 2% KCL wtr. The 7" csg

TIGHT HOLE-PLEASE DO NOT RELEASE ANY INFORMATION ON THIS WELL

South Boyd 27 #10

510' FNL and 990' FEL, Section 27, T19S, R25E

Cisco/Canyon

Eddy County, New Mexico

**** ALL COSTS ARE FIELD ESTIMATES ****

circulated up 9 5/8" to surface. Released pkr. POOH w/ 58 jts- 2 3/8" L-80 4.7# EUE 8rd tbg. Set pkr @ 4976'. RU Key reverse pump to tbg to pressure csg below pkr. Held 1000# for 5 minutes. Pumped on 7" csg & found it to circulate up 9 5/8". Released pkr. POOH w/46 jts- 2 3/8" L-80 4.7# EUE 8rd tbg. Set pkr @ 3513'. RU Key reverse pump to tbg to pressure csg below pkr. Held 1000# for 5 minutes. Pumped on 7" csg & found it to circulate up 9 5/8". Released pkr. POOH w/ 32 jts- 2 3/8" L-80 4.7# EUE 8rd tbg. Set pkr @ 2493'. RU Key reverse pump to tbg. Tbg circulated up 7" csg. Released pkr. POOH w/ 78 jts- 2 3/8" L-80 4.7# EUE 8rd tbg, 7" Model R 10k pkr. One packing element was gone from pkr. PU & RIH w/ 32A Tension 10K pkr, x-over, 2 3/8" SSN, 78 jts- 2 3/8" L-80 4.7# EUE 8rd tbg. Set pkr @ 2493'. Tbg circulated out 9 5/8" csg. The 7" csg tested to 1000#. Held good. Released pkr. RIH w/ 16 jts- 2 3/8" L-80 tbg. Set pkr @ 3002'. Tbg tested to 1000#. The 7" csg circulated out 9 5/8". Released pkr. POOH w/ 8 jts- 2 3/8" L-80 tbg. Set pkr @ 2745'. Tbg tested to 1000#. The 7" csg circulated out 9 5/8". Released pkr. POOH w/ 4 jts- 2 3/8" L-80 tbg. Set pkr @ 2618'. Tbg tested to 1000#. The 7" csg circulated out 9 5/8". Released pkr. POOH w/ 2 jts- 2 3/8" L-80 tbg. Set pkr @ 2556'. Tbg tested to 1000#. The 7" csg circulated out 9 5/8". Released pkr. POOH w/ 1 jt- 2 3/8" L-80 tbg. Set pkr @ 2525'. Would not test dn tbg or 7" csg. The packing elements were in the middle of the leak. Released pkr. RIH w/ 2 3/8" x 8' tbg sub. Set pkr @ 2533'. Tbg tested to 1000#. The 7" csg circulated out 9 5/8". The 7" csg leak is from 2493' - 2533'. Most likely right @ 2525'. Released pkr. POOH w/ 2 3/8" tbg (standing back). LD 32A tension pkr. Close BOP blinds. Hook up 7" & 9 5/8" csg to frac tank & left venting to it. SDFN. Will try to back off csg below leak in the AM.
Current Operation This AM: Back off csg under leak.

12/07/05 ND BOP. ND B-section. PU 7" csg spear w/ collar stop, x-over subs, 2 7/8" x 8' IF drill collar sub. Set grapple inside 7" csg & pull 100,000# to get slips out of wellhead. Let csg dn to 60,000#. RU Rotary WL to RIH w/ string shot below CCL. Find 7" csg collar @ 2616' to back off. Pulled 65,000# into csg. Had Allen's csg crew put 3600# left hand torque into 7" csg w/ tongs. Had Rotary WL shoot csg collar. Lost left hand torque immediately. Backed out on csg 20 rounds. Pulled up on csg & found not unscrewed yet. Backed out 10 more rounds. Pulled up on csg to find still not unscrewed. Had csg crew turn csg w/ tongs while POH w/ csg. Turned 3 rounds when csg came loose. RDMO Rotary WL truck. NU BOP. POOH & LD 64 jts- 7" 23# csg on pipe racks. Close BOP blinds. Tie 7" & 9 5/8" csg into frac tank. SDFN. There were several joints that had a lot of deep pits in the pipe. There were a lot of joints that the threads were galled when unscrewing them. Found 2 holes in the 60th jt out. Will sort out csg in the AM & RIH w/ good 7" csg to screw back into csg in open hole.
Current Operation This AM: Back off 7" csg under leak.

12/08/05 Had Two-State forklift on location to sort out bad & good csg off pipe racks. Had 31 jts- 7" 23# csg that either had galled threads, bad collars or pits in pipe. Put 33 jts- 7" 23# csg back on pipe racks to RIH. Had Double R bring 17 jts- 7" 23# N-80 csg & 5 jts- 7" 26# J-55 csg to location & put on racks. Still had 5 jts- 7" 23# N-80 on location from previous run in. Open BOP blinds. PU & RIH w/ 7" csg collar on btm to screw into pin looking up. RIH w/ 27 jts- 7" 23# J-55 csg to 1067.34' (btm of 9 5/8" csg). Could not get enough pipe on location until tomorrow to screw into csg where we backed off. Close BOP rams. SDFN. Will start RIH w/ csg again in the AM.
Current Operation This AM: RIH.

TIGHT HOLE-PLEASE DO NOT RELEASE ANY INFORMATION ON THIS WELL

South Boyd 27 #10

510' FNL and 990' FEL, Section 27, T19S, R25E

Cisco/Canyon

Eddy County, New Mexico

**** ALL COSTS ARE FIELD ESTIMATES ****

12/09/05 Had Double R bring 14 jts- 7" 23# N-80 csg to location. Had Two-State forklift unload & set csg on pipe racks. PU & RIH w/ 43 jts- 7" 23# csg. Tag pin of csg in open hole very lightly @ 2616'. Turned the csg w/ tongs slowly & screwed into pin w/ csg collar. Torqued up csg. Pulled 85,000# then went to neutral weight. Made mark on pipe to keep track of rounds turned to torque up. Did not get all the torque back. Pulled 100,000# then back to neutral. Torqued csg this way until we got all the torque back. RDMO Allen's csg crew. ND 10" BOP. Had welder cut off 7" csg to put B-section on wellhead. NU BOP. RIH w/ 212 jts- 2 3/8" L-80 4.7# EUE 8rd tbg (open ended). Close BOP rams. RU Key reverse pump to csg to reverse circulate up tbg w/ 2% KCL wtr to load & test csg. Pressure test csg w/ tbg shut to 1000#. Held O.K. Bled dn csg pressure. Tie tbg & csg into frac tank over the weekend. SDFW. Will finish RIH w/ 2 3/8" tbg to circulate pkr fluid on Monday AM then do MIT for the OCD.
Current Operation This AM: RIH w/ tbg.

12/12/05 Had Two-State forklift move catwalk & extra set of pipe racks to the edge of location. Put 2 3/8" L-80 tbg back on pipe racks from the edge of location. Open BOP rams. RIH w/ 30 jts- 2 3/8" L-80 4.7# EUE 8rd tbg. EOT @ 2645'. Hook up Key reverse pump to csg to reverse circulate 300 Bbls 2% KCL wtr w/ double inhibited pkr fluid out tbg to frac tank. RD Key reverse unit. ND BOP & NU B1 bonnet w/ 2" valve. Had Key pump truck hook up to csg to load csg w/ 15 Bbls 2% KCL wtr & pkr fluid. Put chart on recorder & pressure csg to 535#. OCD rep Gerry Guye on location to witness test. Tested for 30 minutes. Pressure dropped off to 485#. Chart was accepted by OCD rep. RDMO Key pump truck. RDMO Mesa Well Service pulling unit. Release all equipment. Well shut in w/ T.A. status. Sent chart into Midland.
FINAL REPORT.
Current Operation This AM: Well TA'd.