

District I
1625 N. French Dr., Hobbs, NM 88240
District II
1301 W. Grand Avenue, Artesia, NM 88210
District III
1000 Rio Brazos Road, Aztec, NM 87410
District IV
1220 S. St. Francis Dr., Santa Fe, NM 87505

State of New Mexico
Energy Minerals and Natural Resources

Form C-101
May 27, 2004

Oil Conservation Division
1220 South St. Francis Dr.
Santa Fe, NM 87505

Submit to appropriate District Office

RECEIVED

☐ AMENDED REPORT

JAN 06 2006

APPLICATION FOR PERMIT TO DRILL, RE-ENTER, DEEPEN, PLUGBACK, OR ADD A ZONE

Operator Name and Address EOG Resources, Inc.		GRID Number 7377
Property Code 35373		API Number 30 - 015-22933
Property Name Thigpen		Well No. 1-X
Proposed Pool Cottonwood Creek, WC, West (Gas) 75260		Proposed Pool 2

Surface Location

UL or lot no.	Section	Township	Range	Lot Idn	Feet from the	North/South line	Feet from the	East/West line	County
F	7	16S	25E		1836	North	1888	West	Eddy

Proposed Bottom Hole Location If Different From Surface

UL or lot no.	Section	Township	Range	Lot Idn	Feet from the	North/South line	Feet from the	East/West line	County

Additional Well Information

Work Type Code E	Well Type Code M	Cable/Rotary R	Lease Type Code P	Ground Level Elevation 3525'
Multiple N	Proposed Depth 5,500'	Formation Wolfcamp	Contractor	Spud Date 1/25/2006
Depth to Groundwater 100'		Distance from nearest fresh water well 400'		Distance from nearest surface water 250'
Pit: Liner: Synthetic <input type="checkbox"/> _____mils thick Clay <input type="checkbox"/> Pit Volume: _____bbls Drilling Method: _____				
Closed-Loop System X Fresh Water X Brine <input type="checkbox"/> Diesel/Oil-based <input type="checkbox"/> Gas/Air <input type="checkbox"/>				

Proposed Casing and Cement Program

Hole Size	Casing Size	Casing weight/foot	Setting Depth	Sacks of Cement	Estimated TOC
17.250	13.375	48#	325'	450	0
12.250	9.625	32#	1150'	1100	0
7.875	5.50	14#	7500'	800	3700

Describe the proposed program. If this application is to DEEPEN or PLUG BACK, give the data on the present productive zone and proposed new productive zone. Describe the blowout prevention program, if any. Use additional sheets if necessary.

It is proposed to reenter the abandoned well bore, drill-out the cement plugs to a depth of 5,500', run cased hole logs, and PXA.

Additionally, EOG proposes to use the well bore utilizing Tilt Fracture Mapping technology to induce tilt reflects to study the geometry and orientation of created hydraulic fractures.

I hereby certify that the information given above is true and complete to the best of my knowledge and belief. I further certify that the drilling pit will be constructed according to NMOCD guidelines X, a general permit ☐, or an (attached) alternative OCD-approved plan ☐.

Printed name: Donny G. Glanton

Title: ROW Agent

E-mail Address: donny_glanton@eogresources.com

Date: 1/4/2006

Phone: (432) 686-3642

OIL CONSERVATION DIVISION

Approved by:

Title:

Approval Date: JAN 12 2006

Expiration Date: JAN 12 2007

Conditions of Approval Attached ☐

District I
1625 N. French Dr., Hobbs, NM 88240
District II
1301 W. Grand Avenue, Artesia, NM 88210
District III
1000 Rio Brazos Rd., Aztec, NM 87410
District IV
1220 S. St. Francis Dr., Santa Fe, NM 87505

State of New Mexico
Energy, Minerals & Natural Resources Department
OIL CONSERVATION DIVISION
1220 South St. Francis Dr.
Santa Fe, NM 87505

Form C-102
Revised October 12, 2005
Submit to Appropriate District Office
State Lease- 4 Copies
Fee Lease- 3 Copies

☐ AMENDED REPORT

WELL LOCATION AND ACREAGE DEDICATION PLAT

API Number 30-01522933	Pool Code 75260	Pool Name COTTONWOOD CREEK, WC, WEST (GAS)
Property Code	Property Name THIGPEN	Well Number 1-R
OGRID No. 7377	Operator Name EOG RESOURCES, INC.	Elevation 3525'

Surface Location

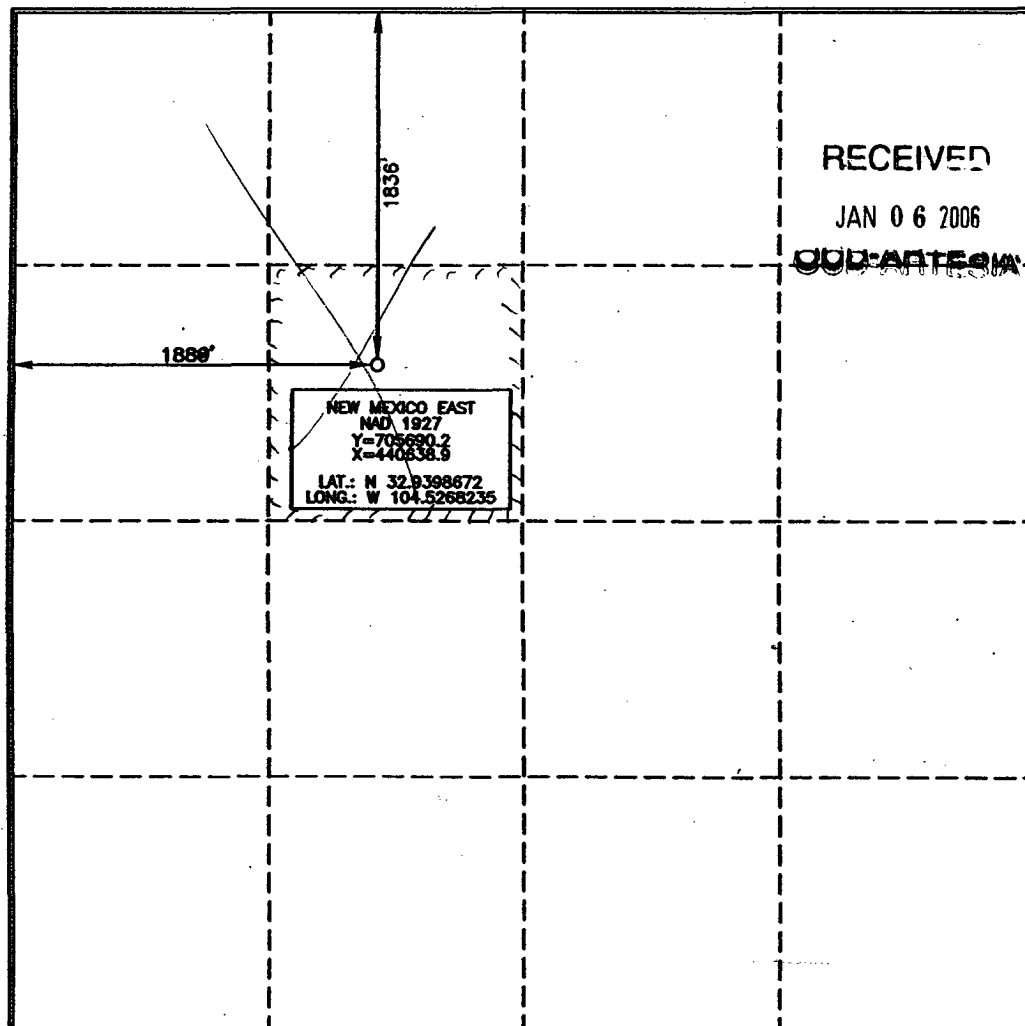
UL or lot no. F	Section 7	Township 16 SOUTH	Range 25 EAST, N.M.P.M.	Lot Idn	Feet from the 1836	North/South line NORTH	Feet from the 1888	East/West line WEST	County EDDY
---------------------------	---------------------	-----------------------------	-----------------------------------	---------	------------------------------	----------------------------------	------------------------------	-------------------------------	-----------------------

Bottom Hole Location If Different From Surface

UL or lot no.	Section	Township	Range	Lot Idn	Feet from the	North/South line	Feet from the	East/West line	County
---------------	---------	----------	-------	---------	---------------	------------------	---------------	----------------	--------

Dedicated Acres 40	Joint or Infill	Consolidation Code	Order No.
------------------------------	-----------------	--------------------	-----------

No allowable will be assigned to this completion until all interests have been consolidated or a non-standard unit has been approved by the division.



OPERATOR CERTIFICATION

I hereby certify that the information contained herein is true and complete to the best of my knowledge and belief, and that this organization either owns a working interest or unleased mineral interest in the land including the proposed bottom hole location or has a right to drill this well at this location pursuant to a contract with an owner of such a mineral or working interest, or to a voluntary pooling agreement or a compulsory pooling order heretofore entered by the division.

Donny G. Glanton 1-4-2006
Signature Date

Donny G Glanton
Printed Name

SURVEYOR CERTIFICATION

I hereby certify that the well location shown on this plat was plotted from field notes of actual surveys made by me or under my supervision, and that the same is true and correct to the best of my belief.

15079
DECEMBER 7, 2005
Date of Survey
Signature and Seal of Professional Surveyor

Terry J. Asch
Certificate Number 15079

WOF 051122WL-M (COC)